

T:\04\2017 5:00:30 PM C:\Data File\Revit 2016\1493101 Circle 75 IL R16-C_1tabler.rvt

| UNIT DATA | |
|--------------|-------|
| UNIT TYPE: | A2 |
| QUANTITY: | 3 |
| HEATED AREA: | 81 SF |
| GROSS AREA: | 93 SF |

UNIT SYMBOLS

| PLAN SYMBOL | ELEV. SYMBOL | DESCRIPTION | PLAN SYMBOL | ELEV. SYMBOL | DESCRIPTION |
|-------------|--------------|--|-------------|--------------|--|
| | | REFRIGERATOR | | | RANGE W/ MICROWAVE ABOVE AND VENTLESS HOOD |
| | | HVAC UNIT/ WATER HEATER, SEE MECHANICAL DWGS | | | RANGE HOOD W/ HC ACCESSIBLE SWITCH; PROVIDE COUNTERTOP MICROWAVE |
| | | DISHWASHER, BELOW COUNTERTOP | | | ALL-IN ONE COMBO @ H.C. |
| | | PANTRY | | | WASHER & DRYER SEPARATE |
| | | COUNTERTOP WITH SGL. INTEGRATED SINK | | | COUNTERTOP W/ STAINLESS STEEL UNDERMOUNT KIT, SINK W/ DISPOSAL |
| | | ELECTRICAL PANEL | | | ELONGATED TOILET |
| | | 36" GARDEN TUB | | | TILED TUB SURROUND |
| | | LIGHT FIXTURE- SEE SCHEDULE | | | 24" TOWEL BAR AT TUB SURROUND |
| | | TOILET PAPER HOLDER | | | SOAP DISH |
| | | TUB/SHOWER CONTROLS | | | SHOWER HEAD |
| | | SHOWER | | | |

UNIT KEYNOTES

- 1a HIGH WIRE SHELVING, REF TO B/ A3-00
- 1b 2 WIRE SHELVING, REF TO C/ A3-00
- 2 3 CM GRANITE COUNTERTOP W/TURNDOWN AND FULL TILE BACKSPLASH WITH 1" OVERHANG TYPICAL, OR 1/2" OVERHANG AT KITCHEN ISLANDS, TYPICAL U.N.O.
- 3 CURVED SHOWER CURTAIN ROD
- 4 MIRROR AS PER I.D. DWGS TO BE CTDR OVER COUNTERTOP WIDTH. BOTTOM OF REFLECTIVE SURFACE TO BE 40" A.F.F. MAX
- 5 34" HIGH COUNTER TOP SURFACE AREA; PROVIDE 30" WIDE REMOVABLE BASE CABINET BELOW SINK; EXTEND FLOOR FINISH UNDERNEATH.
- 6 REMOVABLE BASE CABINET BELOW
- 7 2CM GRANITE VANITY COUNTERTOP WITH INTEGRATED BOWL.

UNIT RCP LEGEND

| | |
|--|--|
| | CEILING FAN AND LIGHT COMBO UNIT |
| | SURFACE MOUNTED FIXTURE (FOYER, CLOSETS) |
| | PENDANT LIGHTING FIXTURE |
| | TRACK LIGHTING (KITCHEN) |
| | WALL MOUNTED VANITY LIGHT |
| | RECESSED LIGHTING FIXTURE |
| | WALL MOUNTED SCONCE FIXTURE (EXTERIOR) |
| | EXHAUST FAN |
| | DROPPED CEILING AREA (SEE PLAN FOR HEIGHT) |
| | FINISHED CEILING HEIGHT A.F.F. |

RCP GENERAL NOTES

1. COORDINATE FIXTURE METALS WITH ALL OTHER ARCHITECTURAL METALS, TYP.
2. ALL SOFFITS WITHIN A SINGLE ROOM ARE THE SAME HEIGHT, TYP., UNLESS NOTED OTHERWISE
3. REFER TO ELECTRICAL DWGS. FOR ADDITIONAL INFORMATION
4. ALL CEILING HEIGHTS TO BE 9'-0" - UNLESS OTHERWISE NOTED

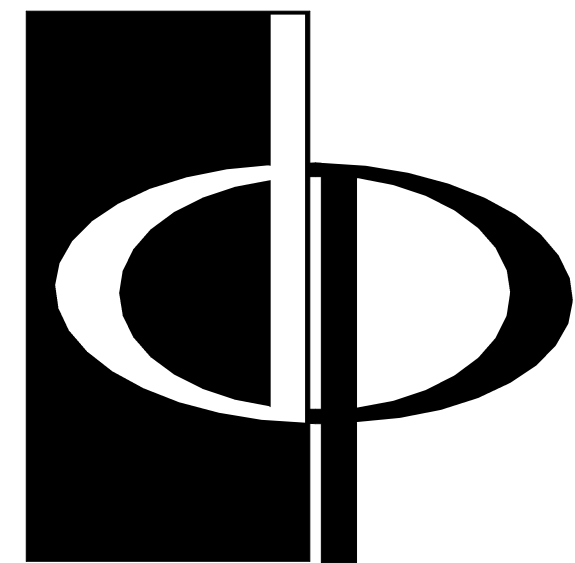
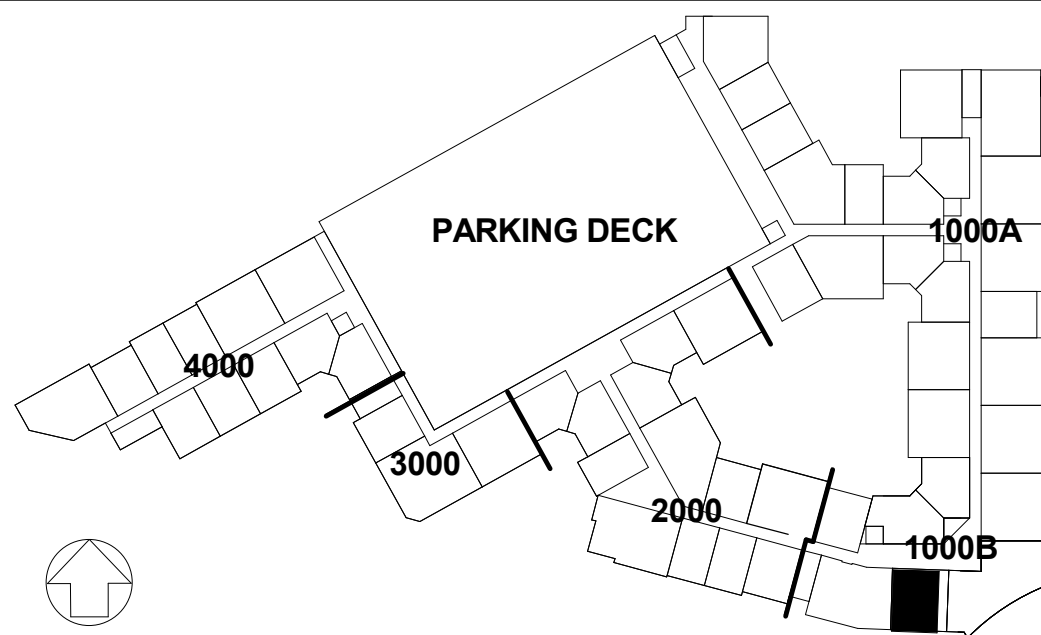
UNIT FLOORING LEGEND

| | |
|--|-------------------------------|
| | VINYL WOOD PLANK W/ SOUND MAT |
| | CARPET |
| | CERAMIC TILE W/ SOUND MAT |

GENERAL NOTES

1. REFER TO SHEET A3-00 FOR UNIT PLAN NOTES AND SHELVING AS INDICATED: (X)
2. ELECTRICAL OUTLETS SHALL NOT BE CUT INTO MIRROR
3. ALL UNIT INTERIOR PARTITIONS ARE 1 B4, U.N.O.
4. SEE REINFORCING BLOCKING INFORMATION ON SHEET CD-21
5. AT UNIT ELEVATIONS WHERE CASEWORK IS SHOWN, DIMENSIONS ARE FROM FINISH FACE OF WALL TO FACE OF CABINET
6. SEE SHEET A8-02 FOR ALL FLOOR FINISH TRANSITIONS
7. SEE BUILDING PLANS AND ELEVATIONS FOR ALL EXTERIOR FINISH/SKIN CONDITIONS

KEYPLAN



THE PRESTON PARTNERSHIP, LLC
A MULTI-DISCIPLINARY DESIGN FIRM

SOUTH TERRACES
115 PERIMETER CENTER PLACE, SUITE 950
ATLANTA, GEORGIA 30346
TELEPHONE: 770 396 7248
FAX: 770 396 2945

WWW.THEPRESTONPARTNERSHIP.COM
CONSULTANT

SEAL



PROJECT

RESERVE AT THE BALLPARK, PHASE II, AKA REVEL AT THE BALLPARK
2885 CRESCENT PKWY
SMYRNA, GA 30080

FOR



ATLANTIC REALTY PARTNERS

3438 PEACHTREE ROAD
SUITE 1425
ATLANTA, GA 30326

| ISSUES & REVISIONS | DATE |
|--------------------------------|------------|
| CONCEPTUAL DESIGN | 08/21/2015 |
| SCHEMATIC DESIGN | 09/28/2015 |
| CM/CD DESIGN DEVELOPMENT | 10/15/2015 |
| GMP | 04/03/2017 |
| PERMIT SET | 05/22/2017 |
| 2. ADA COMMENTS / COORDINATION | 07/25/2017 |
| 3. BUILDING PERMIT | 07/25/2017 |

DATE **05/22/2017**

JOB NUMBER **1493101**

DRAWN BY **EKS/NB**

CHECKED BY **CW**

SHEET TITLE **UNIT A2 PLANS AND ELEVATIONS**

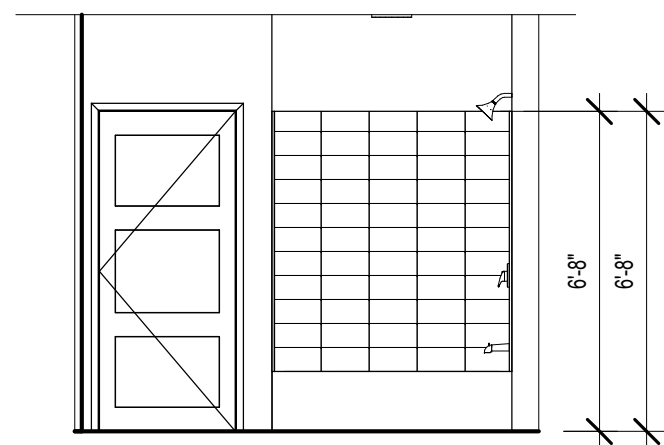
SHEET NUMBER

A3-03

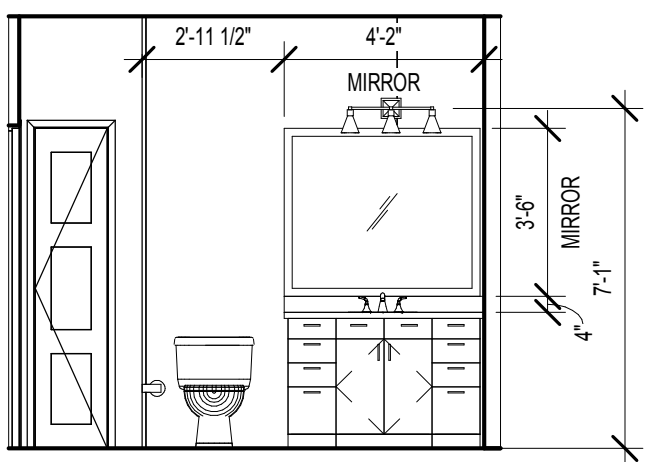
COMMENTS **BUILDING PERMIT RE-SUBMISSION**

30X42

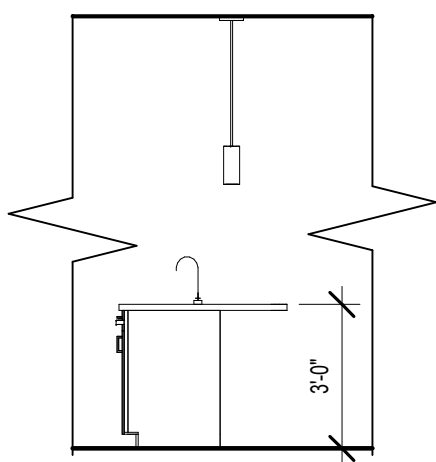
© 2017 The Preston Partnership, LLC



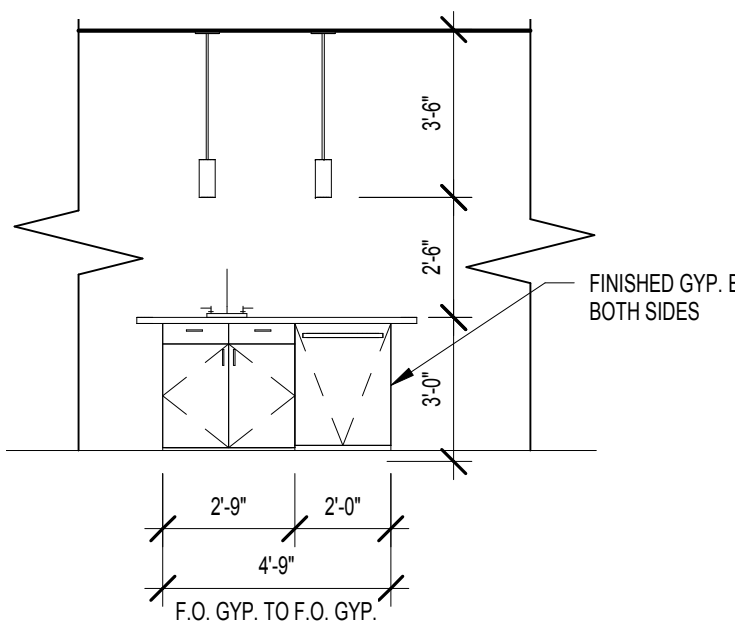
UNIT A2 - BATHROOM TUB ELEVATION
SCALE: 1/4" = 1'-0"



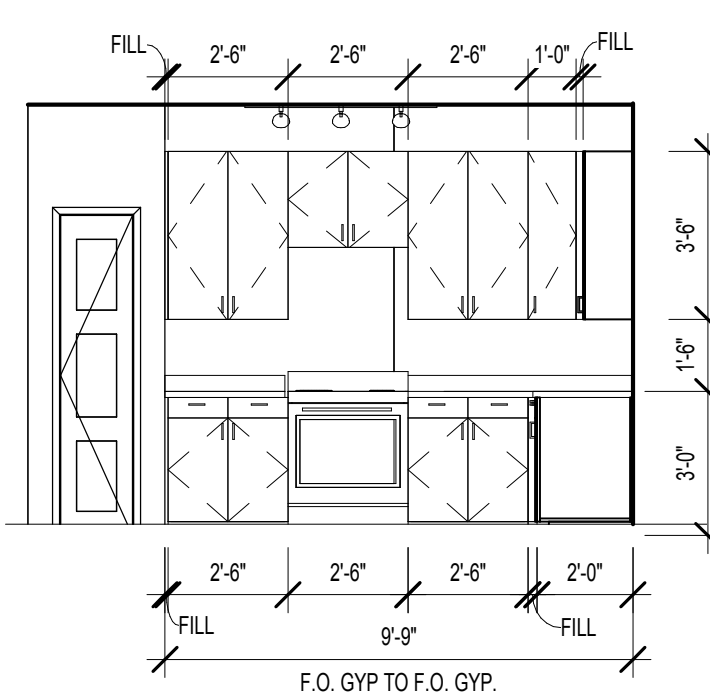
UNIT A2 - BATHROOM VANITY ELEVATION
SCALE: 1/4" = 1'-0"



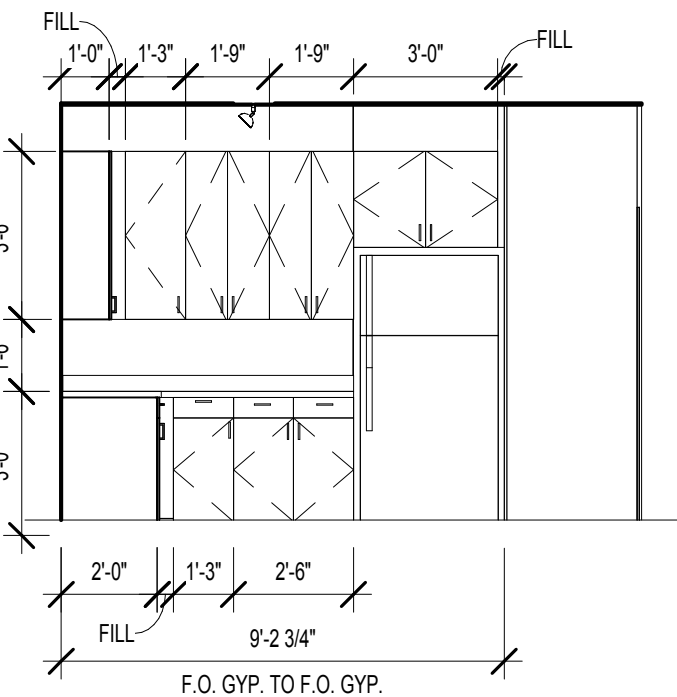
UNIT A2 - KITCHEN ISLAND ELEVATION
SCALE: 1/4" = 1'-0"



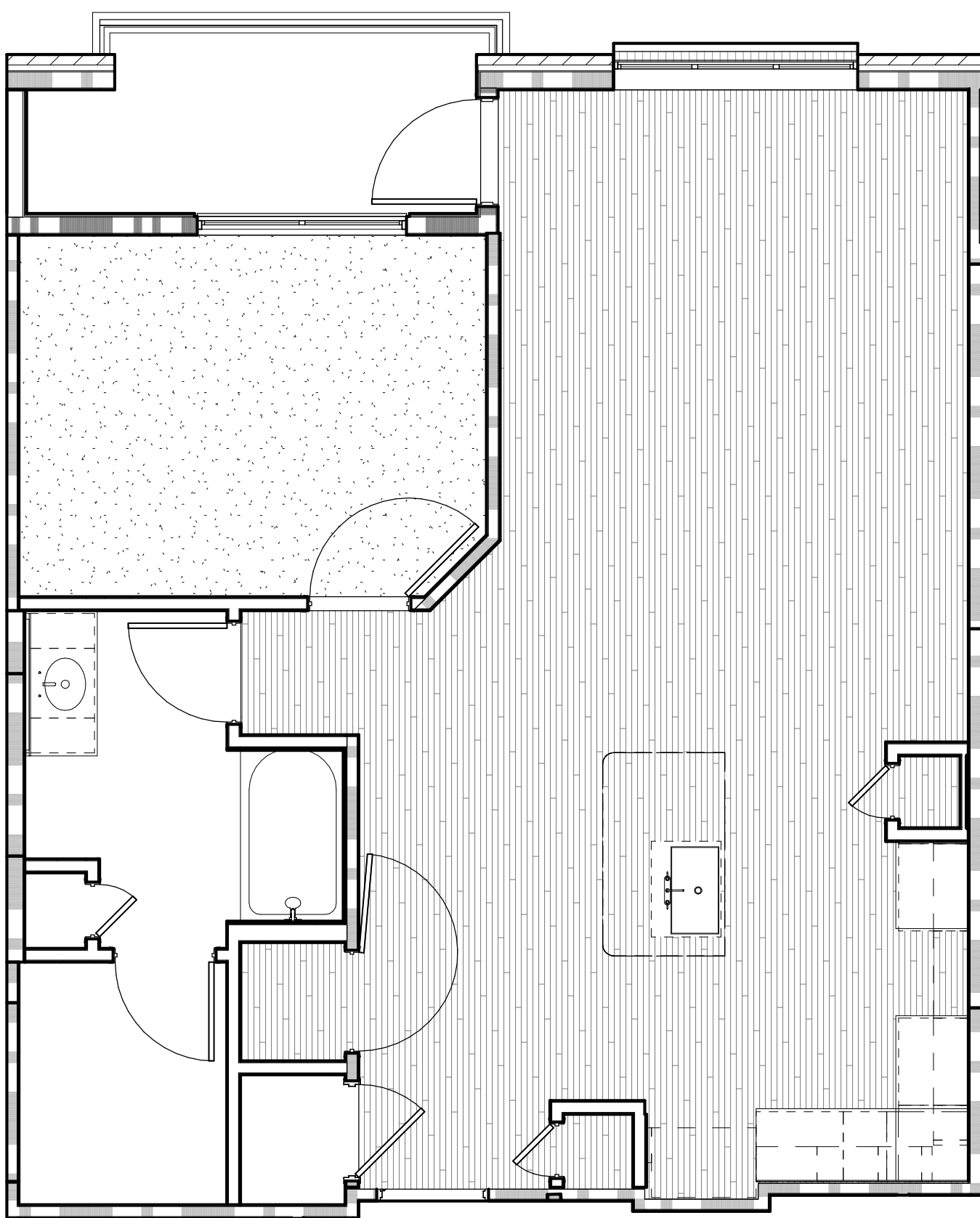
UNIT A2 - KITCHEN ISLAND SINK ELEVATION
SCALE: 1/4" = 1'-0"



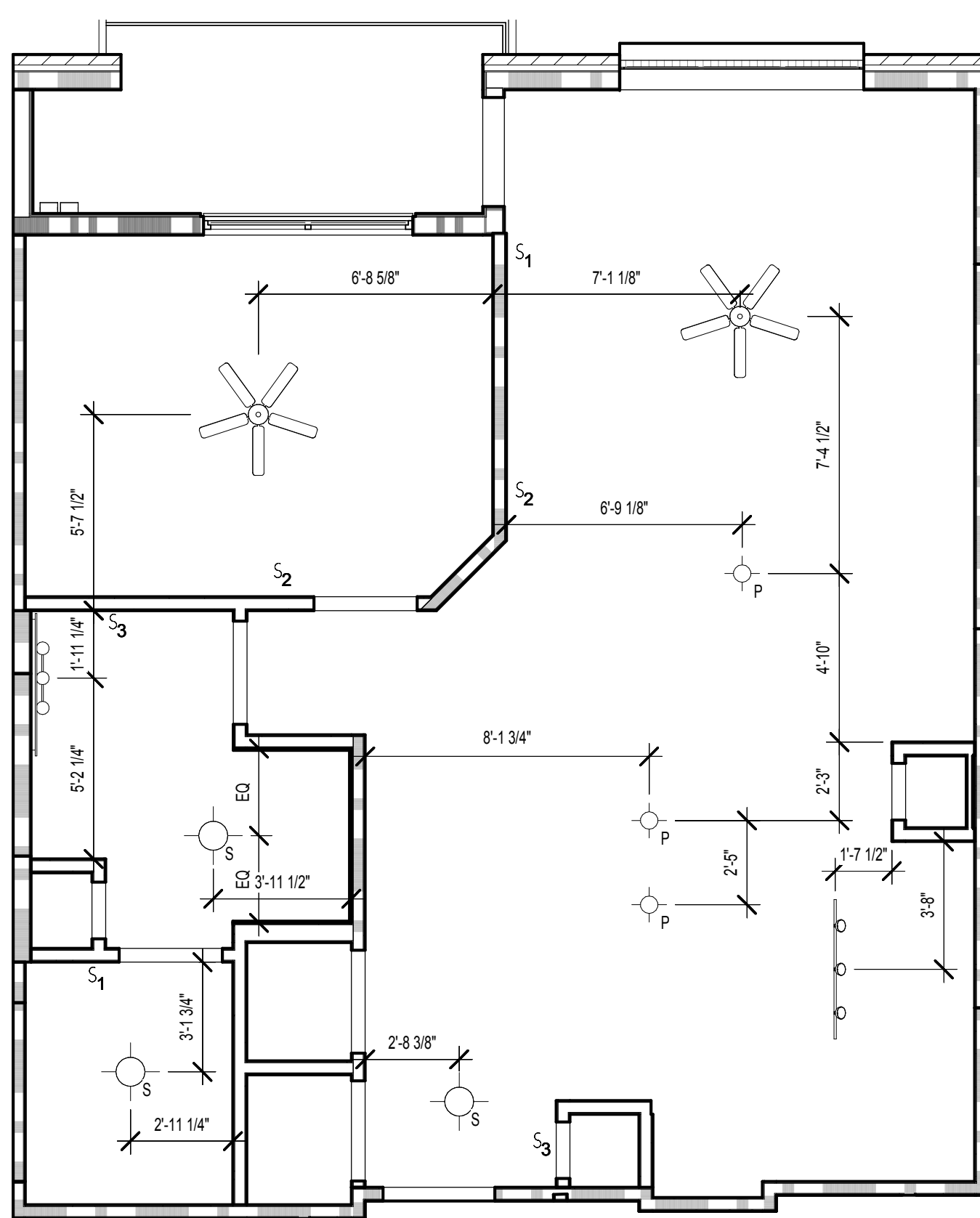
UNIT A2 - KITCHEN RANGE ELEVATION
SCALE: 1/4" = 1'-0"



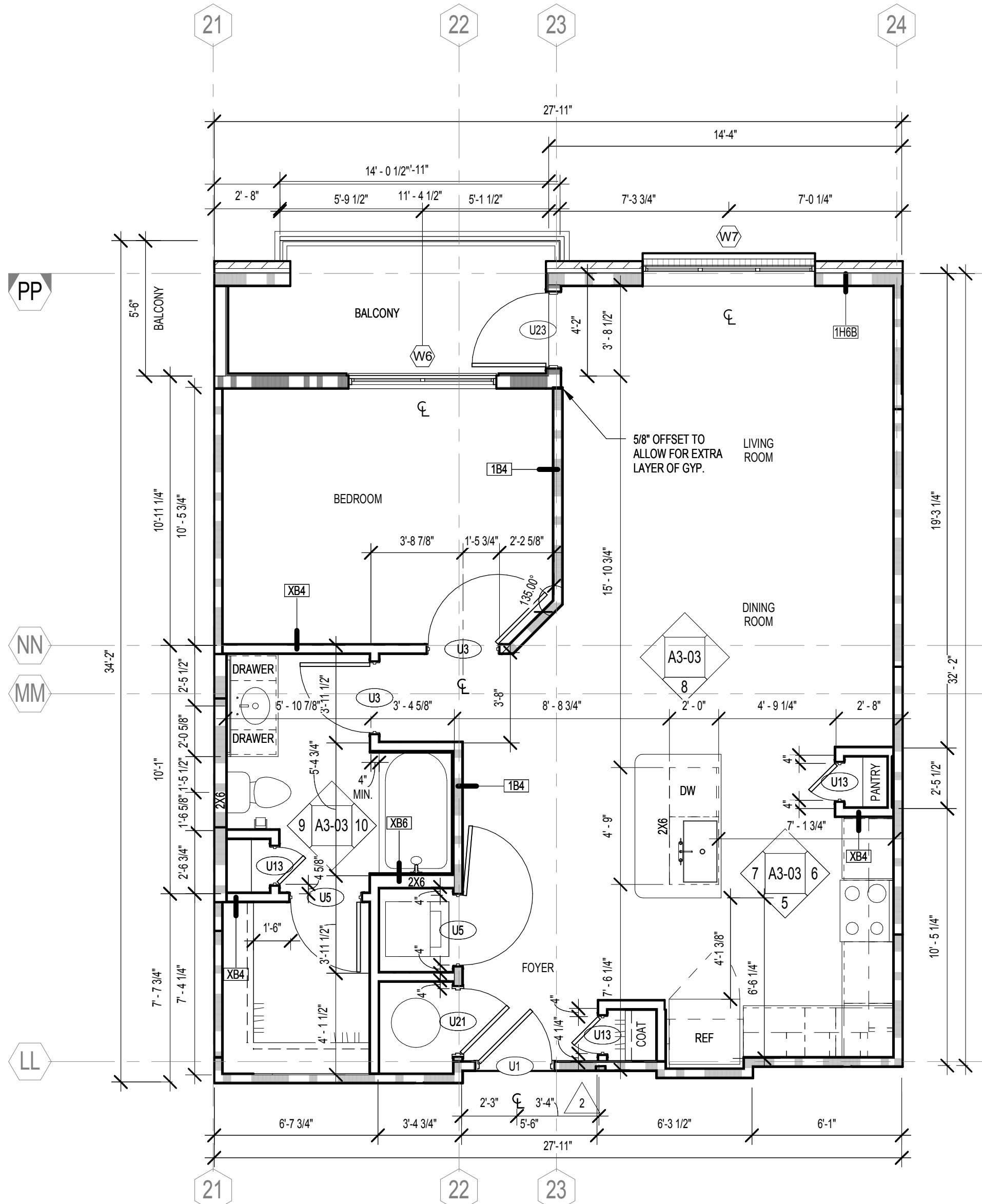
UNIT A2 - KITCHEN REF. ELEVATION
SCALE: 1/4" = 1'-0"



UNIT A2 FLOORING PLAN
SCALE: 1/4" = 1'-0"



UNIT A2 RCP
SCALE: 1/4" = 1'-0"



UNIT A2 FLOOR PLAN
SCALE: 1/4" = 1'-0"