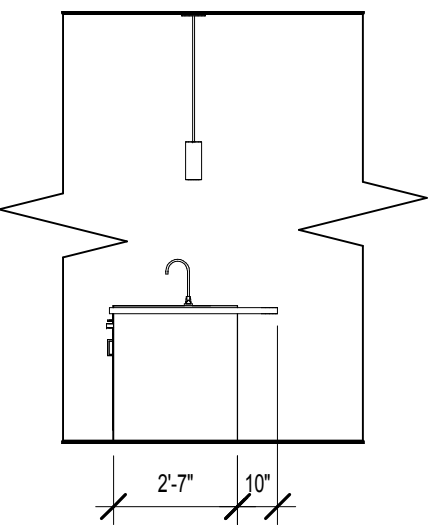
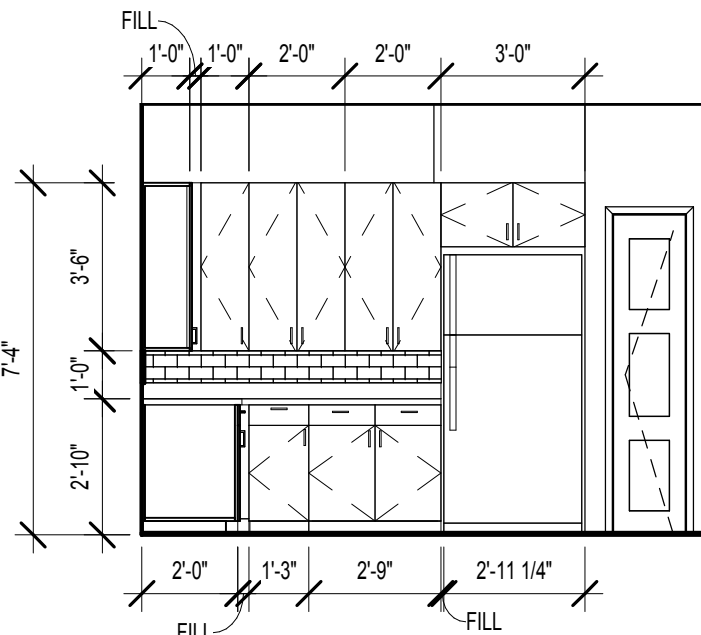


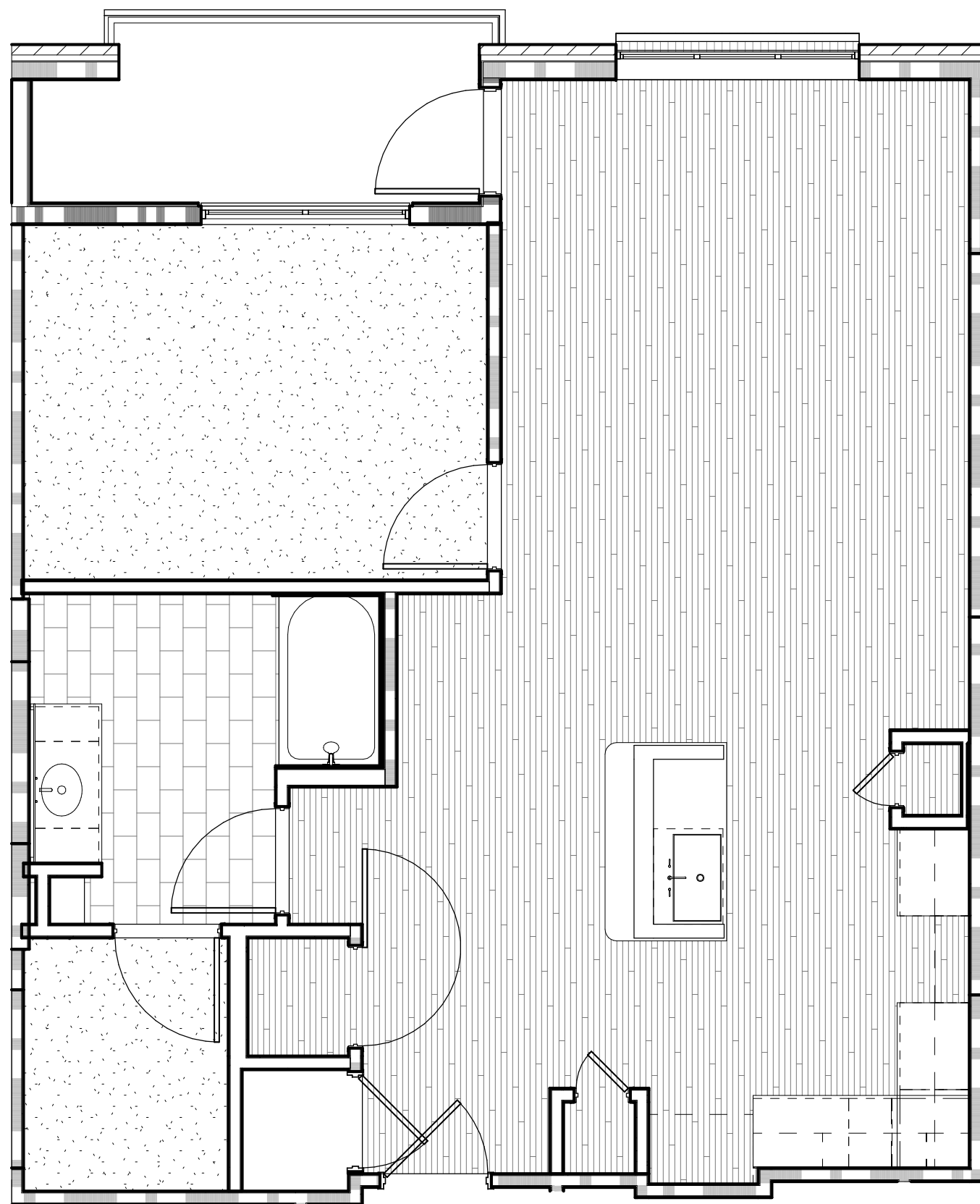
10 UNIT A2-HC - BATHROOM VANITY ELEVATION
SCALE: 1/4" = 1'-0"



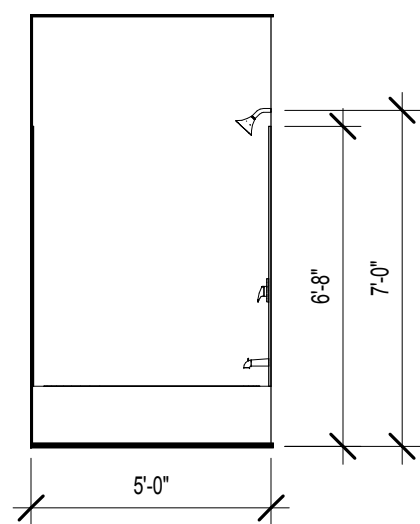
8 UNIT A2-HC - KITCHEN ISLAND SIDE ELEVATION
SCALE: 1/4" = 1'-0"



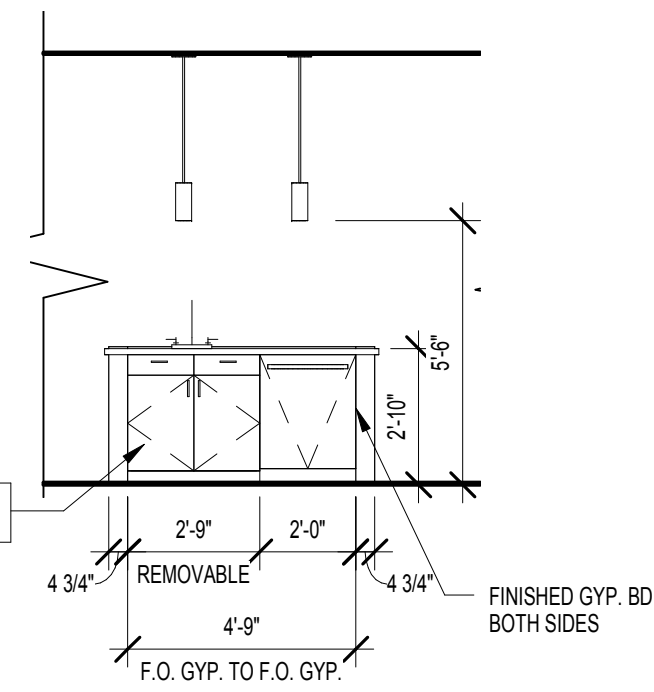
6 UNIT A2-HC - KITCHEN REFRIGERATOR ELEVATION
SCALE: 1/4" = 1'-0"



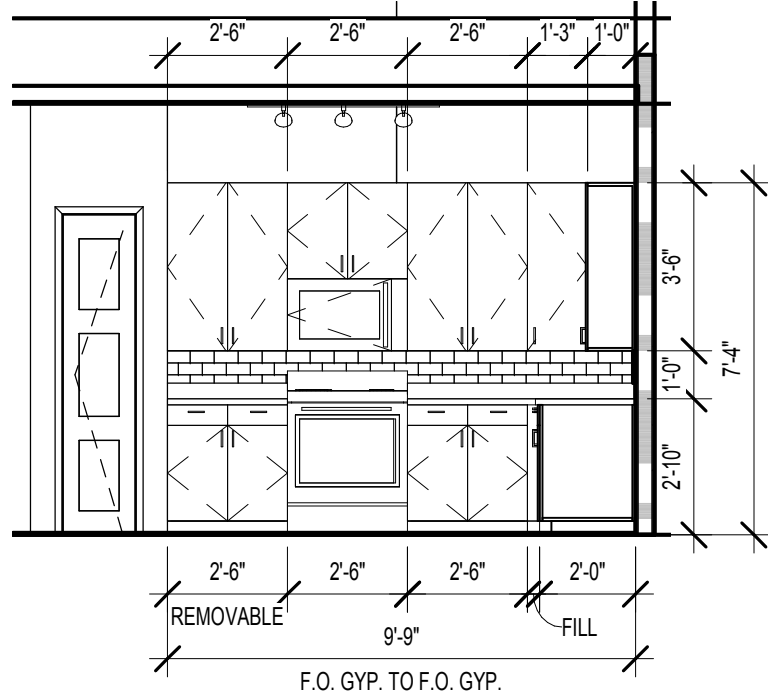
3 UNIT A2-HC FLOORING PLAN
SCALE: 1/4" = 1'-0"



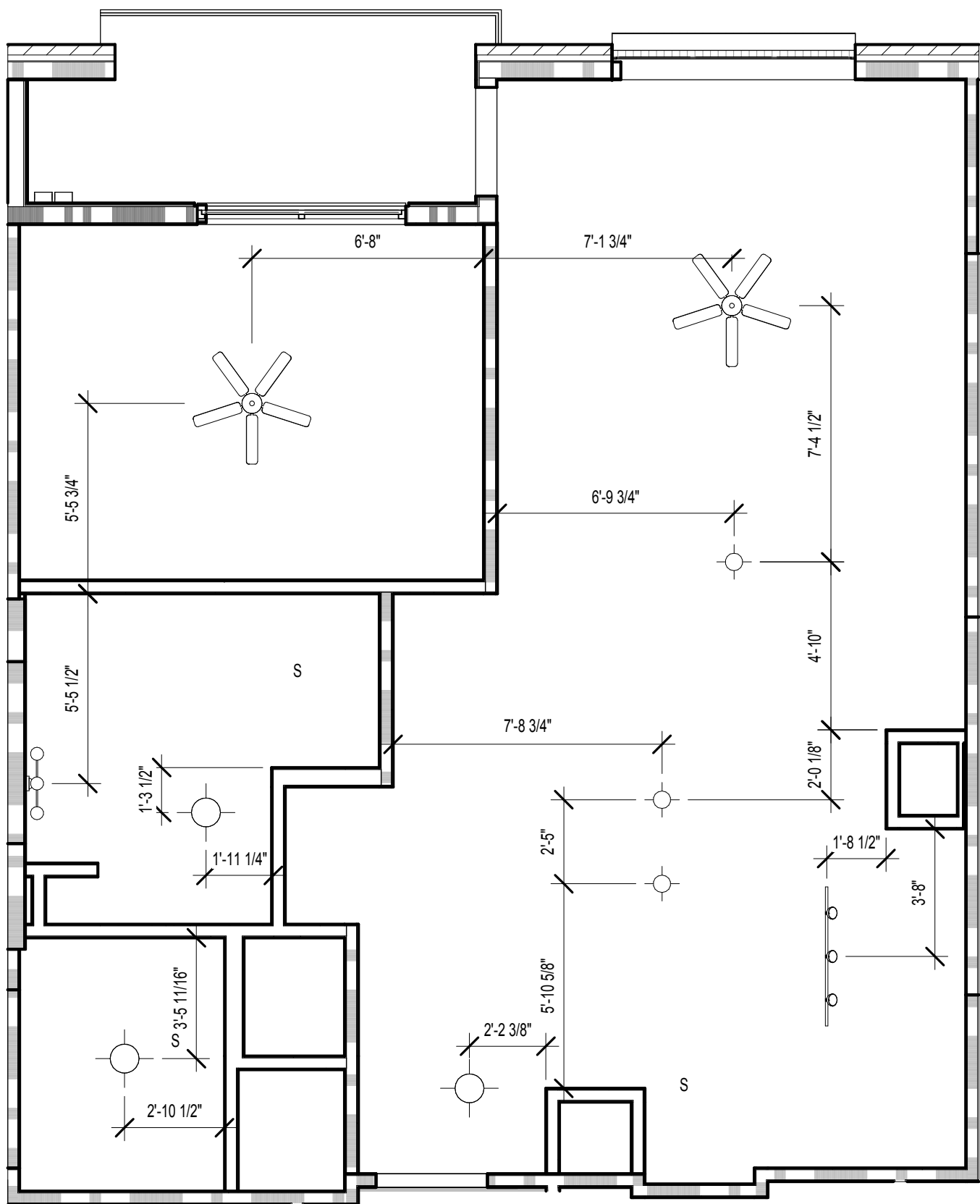
9 UNIT A2-HC - BATHROOM TUB ELEVATION
SCALE: 1/4" = 1'-0"



7 UNIT A2-HC - KITCHEN ISLAND ELEVATION
SCALE: 1/4" = 1'-0"



5 UNIT A2-HC - KITCHEN RANGE ELEVATION
SCALE: 1/4" = 1'-0"

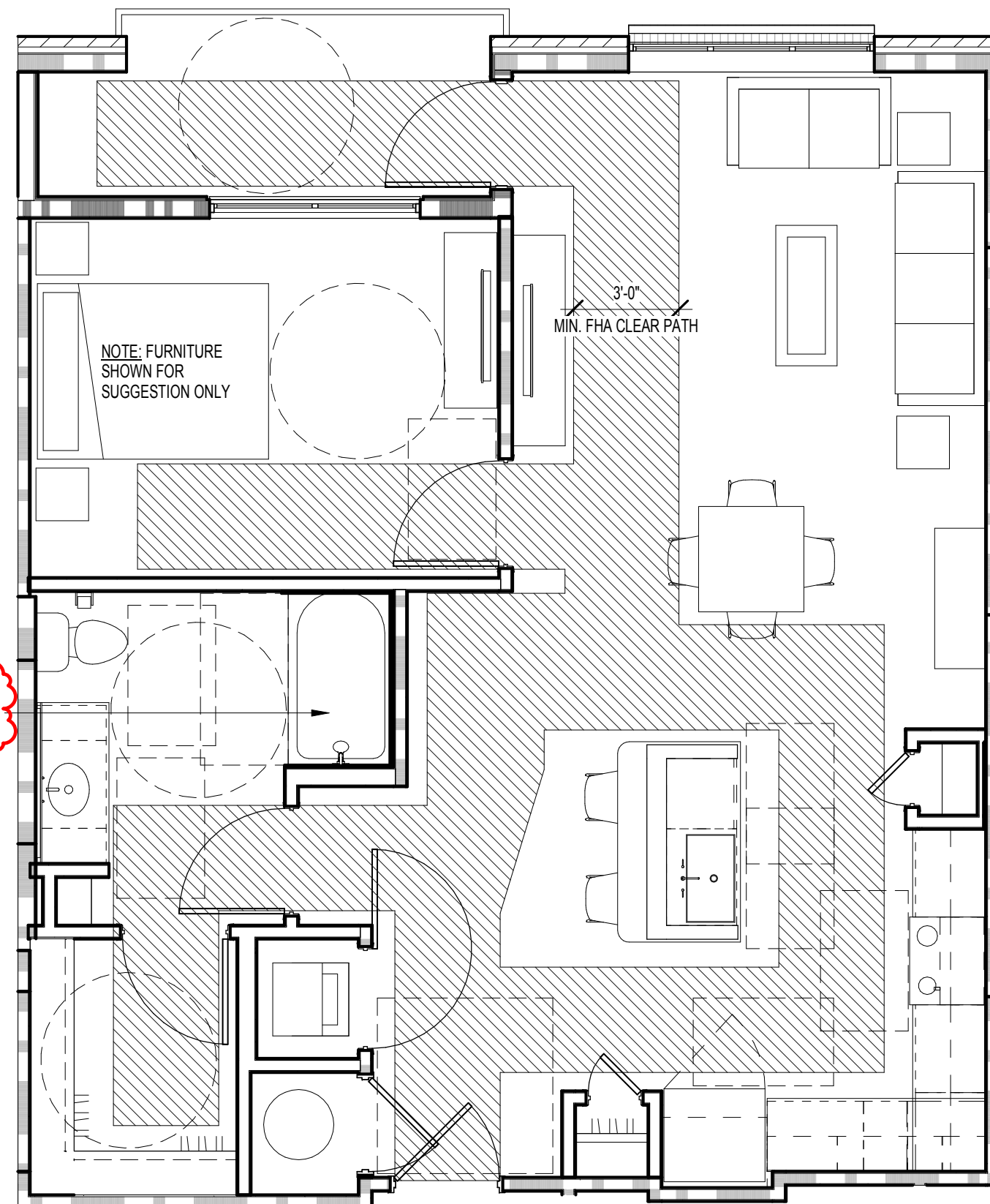


2 UNIT A2-HC RCP
SCALE: 1/4" = 1'-0"

REVISION SUMMARY #2
A. SHELF IN THE CLOSET EDITED TO PROVIDE C.F.S. AT DOOR
B. NOTE ADDED FOR DOOR CLEARANCE

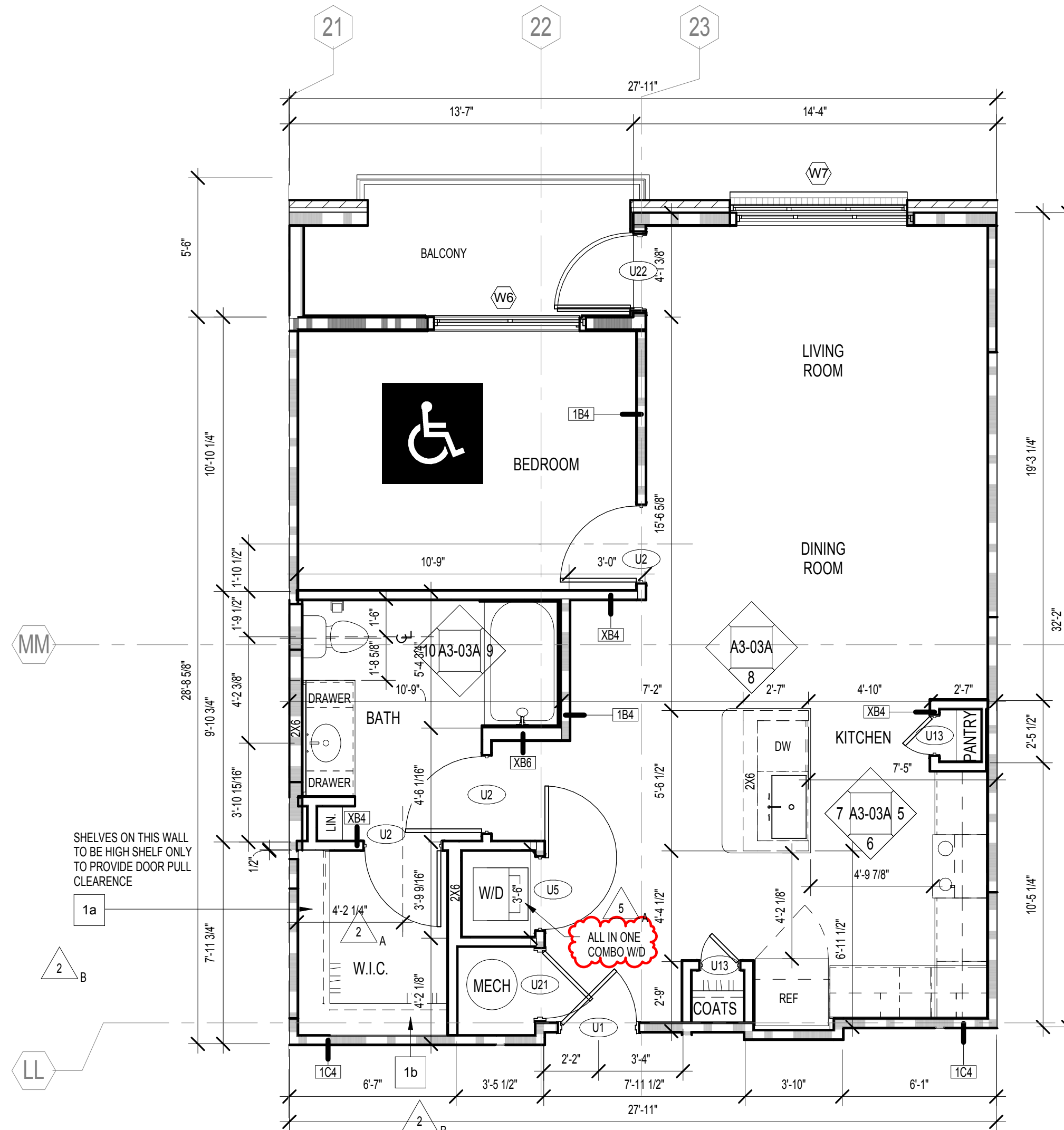
REVISION SUMMARY #5
A. ADDED NOTE

A2-HC = TYPE B UNIT



SEE CD-24A FOR TOILET & TUB BLOCKING

4 UNIT A2-HC FHA PLAN
SCALE: 1/4" = 1'-0"



1 UNIT A2-HC FLOOR PLAN
SCALE: 1/4" = 1'-0"

UNIT DATA	
UNIT TYPE:	A2-HC
QUANTITY:	1
HEATED AREA:	811 SF
GROSS AREA:	923 SF

UNIT SYMBOLS

PLAN SYMBOL	ELEV. SYMBOL	DESCRIPTION	PLAN SYMBOL	ELEV. SYMBOL	DESCRIPTION
		REFRIGERATOR			RANGE W/ MICROWAVE ABOVE AND VENTLESS HOOD
		HVAC UNIT WATER HEATER, SEE MECHANICAL DWGS			RANGE HOOD W/ HC ACCESSIBLE SWITCH; PROVIDE COUNTERTOP MICROWAVE
		DISHWASHER, BELOW COUNTERTOP			ALL IN ONE COMBO @ H.C.
		PANTRY			WASHER & DRYER SEPARATE
		COUNTERTOP WITH SINK, INTEGRATED SINK			COUNTERTOP W/ STAINLESS STEEL UNDERMOUNT KIT, SINK W/ DISPOSAL
		ELECTRICAL PANEL			ELONGATED TOILET
		36" GARDEN TUB			24" TOWEL BAR AT TUB SURROUND
		LIGHT FIXTURE, SEE SCHEDULE			SOAP DISH
		TOILET PAPER HOLDER			SHOWER HEAD
		TUB/SHOWER CONTROLS			
		SHOWER			

UNIT KEYNOTES

- 1a HIGH WIRE SHELVING, REF TO B/ A3-00
- 1b 2 WIRE SHELVING, REF TO C/ A3-00
- 2 3 CM GRANITE COUNTERTOP W/TURNDOWN AND FULL TILE BACKSPLASH WITH 1" OVERHANG TYPICAL, OR 1/2" OVERHANG AT KITCHEN ISLANDS, TYPICAL U.N.O.
- 3 CURVED SHOWER CURTAIN ROD
- 4 MIRROR AS PER I.D. DWGS TO BE CTDR OVER COUNTERTOP WIDTH. BOTTOM OF REFLECTIVE SURFACE TO BE 40" A.F.F. MAX
- 5 34" HIGH COUNTER TOP SURFACE AREA; PROVIDE 30" WIDE REMOVABLE BASE CABINET BELOW SINK; EXTEND FLOOR FINISH UNDERNEATH.
- 6 REMOVABLE BASE CABINET BELOW
- 7 2CM GRANITE VANITY COUNTERTOP WITH INTEGRATED BOWL.

UNIT RCP LEGEND

- CEILING FAN AND LIGHT COMBO UNIT
- SURFACE MOUNTED FIXTURE (FOYER, CLOSETS)
- PENDANT LIGHTING FIXTURE
- TRACK LIGHTING (KITCHEN)
- WALL MOUNTED VANITY LIGHT
- RECESSED LIGHTING FIXTURE
- WALL MOUNTED SCONCE FIXTURE (EXTERIOR)
- EXHAUST FAN
- DROPPED CEILING AREA (SEE PLAN FOR HEIGHT)
- FINISHED CEILING HEIGHT A.F.F.

RCP GENERAL NOTES

1. COORDINATE FIXTURE METALS WITH ALL OTHER ARCHITECTURAL METALS, TYP.
2. ALL SOFFITS WITHIN A SINGLE ROOM ARE THE SAME HEIGHT, TYP., UNLESS NOTED OTHERWISE
3. REFER TO ELECTRICAL DWGS. FOR ADDITIONAL INFORMATION
4. ALL CEILING HEIGHTS TO BE 9'-0" - UNLESS OTHERWISE NOTED

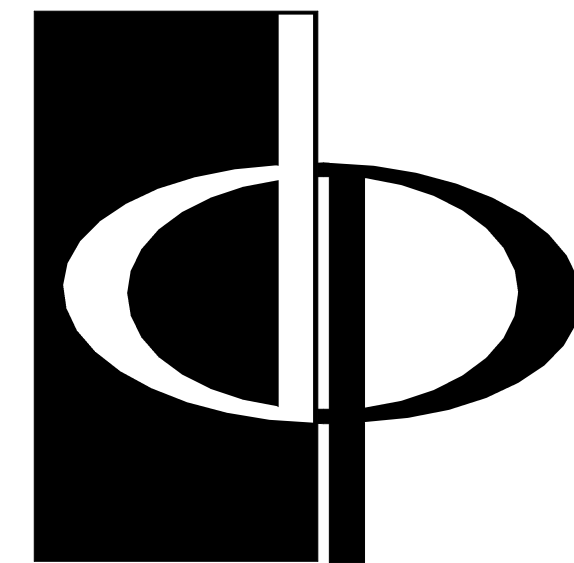
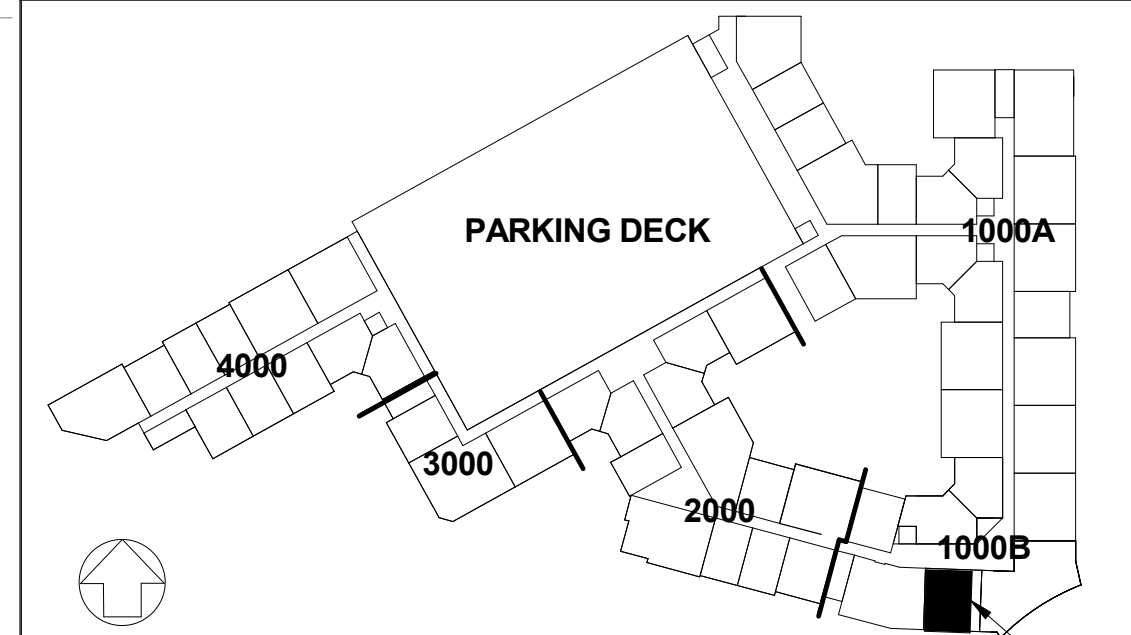
UNIT FLOORING LEGEND

- VINYL WOOD PLANK W/ SOUND MAT
- CARPET
- CERAMIC TILE W/ SOUND MAT

GENERAL NOTES

1. REFER TO SHEET A3-00 FOR UNIT PLAN NOTES AND SHELVING AS INDICATED: (X)
2. ELECTRICAL OUTLETS SHALL NOT BE CUT INTO MIRROR
3. ALL UNIT INTERIOR PARTITIONS ARE 1 B4, U.N.O.
4. SEE REINFORCING BLOCKING INFORMATION ON SHEET CD-21
5. AT UNIT ELEVATIONS WHERE CASEWORK IS SHOWN, DIMENSIONS ARE FROM FINISH FACE OF WALL TO FACE OF CABINET
6. SEE SHEET A8-02 FOR ALL FLOOR FINISH TRANSITIONS
7. SEE BUILDING PLANS AND ELEVATIONS FOR ALL EXTERIOR FINISH/SKIN CONDITIONS

KEYPLAN



THE PRESTON
PARTNERSHIP, LLC
A MULTI-DISCIPLINARY DESIGN FIRM

SOUTH TERRACES
115 PERIMETER CENTER PLACE, SUITE 950
ATLANTA, GEORGIA 30346
TELEPHONE: 770 396 7248
FAX: 770 396 2945

WWW.THEPRESTONPARTNERSHIP.COM

CONSULTANT

SEAL



PROJECT
**RESERVE AT THE
BALLPARK, PHASE II,
AKA REVEL AT THE
BALLPARK**
2885 CRESCENT PKWY
SMYRNA, GA 30080

FOR



ATLANTIC REALTY
PARTNERS

3438 PEACHTREE ROAD
SUITE 1425
ATLANTA, GA 30326

ISSUES & REVISIONS

NO.	DESCRIPTION	DATE
1	GMP	04/03/2017
2	PERMIT SET	05/22/2017
3	COORDINATION	07/25/2017
4	BUILDING PERMIT	07/25/2017
5	BUILDING PERMIT COMMENTS / COORDINATION	10/02/2017

DATE

JOB NUMBER

DRAWN BY

CHECKED BY

SHEET TITLE

SHEET NUMBER

COMMENTS

BUILDING PERMIT RE-SUBMISSION

30X42

© 2017 The Preston Partnership, LLC