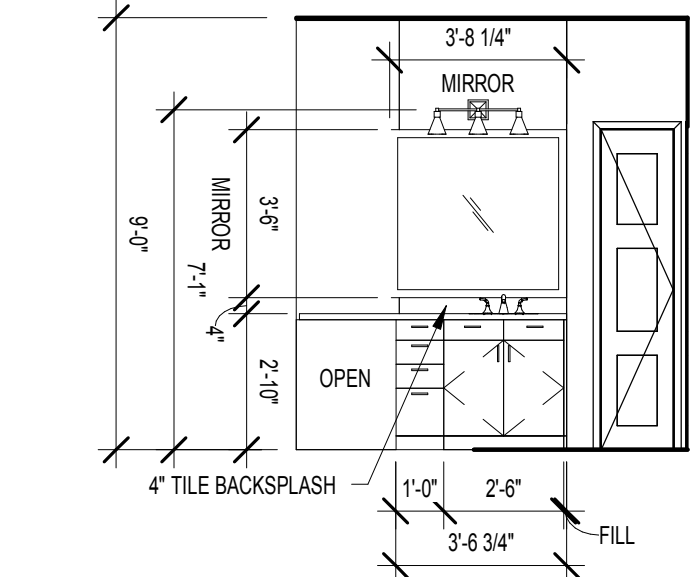
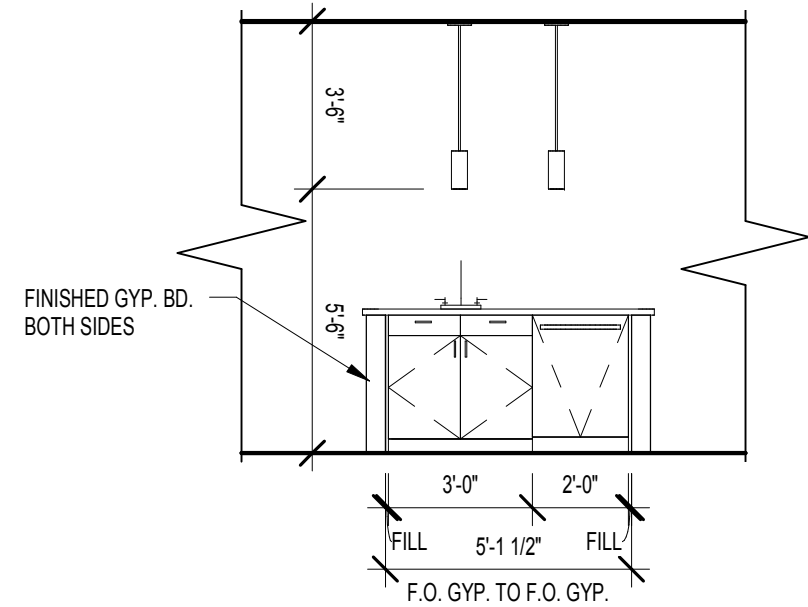


C:\Data File\Revit\2016\1493101 Circle 75 IL R16-C\_1tabler.rvt 10/4/2017 5:09:16 PM

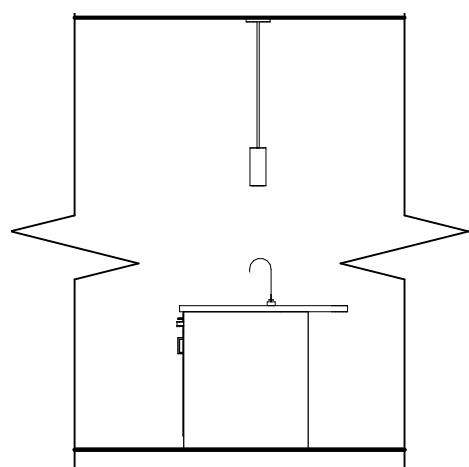
REVISION SUMMARY #2  
A. NOTES CORRECTED  
B. CHANGED DOOR TO U7



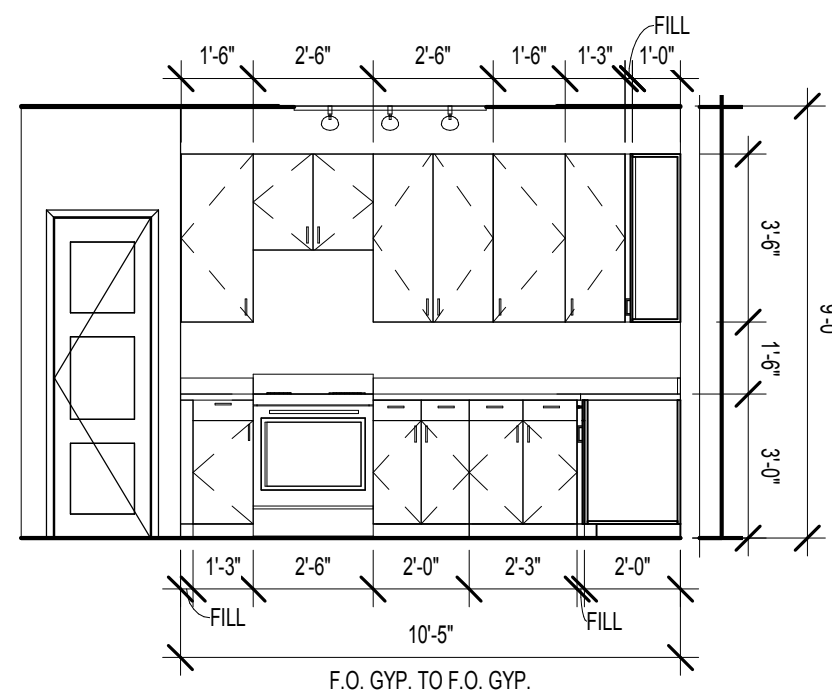
10 UNIT A3 - BATHROOM VANITY ELEVATION  
SCALE: 1/4" = 1'-0"



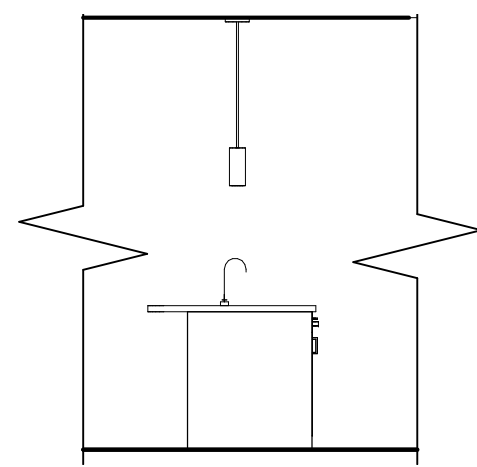
7 UNIT A3 - KITCHEN ISLAND SINK ELEVATION  
SCALE: 1/4" = 1'-0"



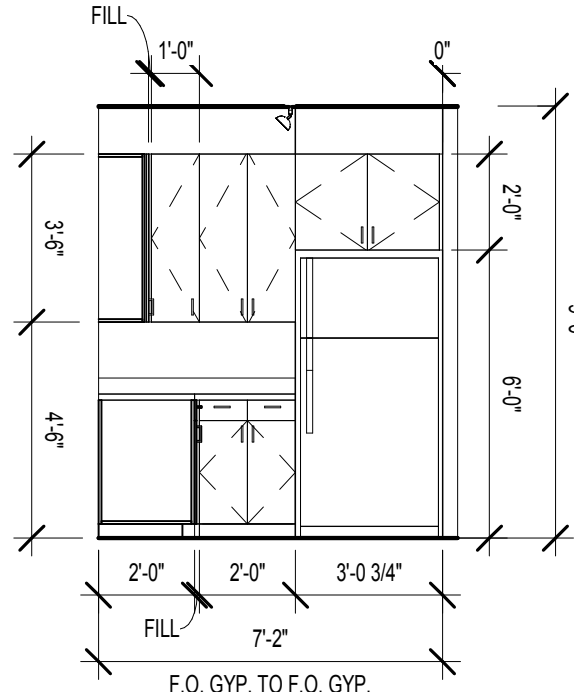
9 UNIT A3 - KITCHEN ISLAND SOUTH ELEVATION  
SCALE: 1/4" = 1'-0"



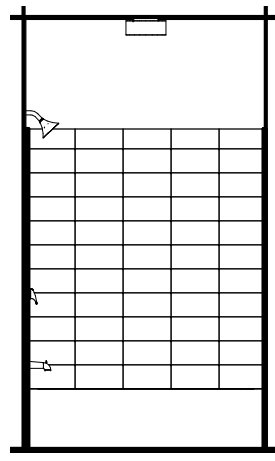
6 UNIT A3 - KITCHEN RANGE ELEVATION  
SCALE: 1/4" = 1'-0"



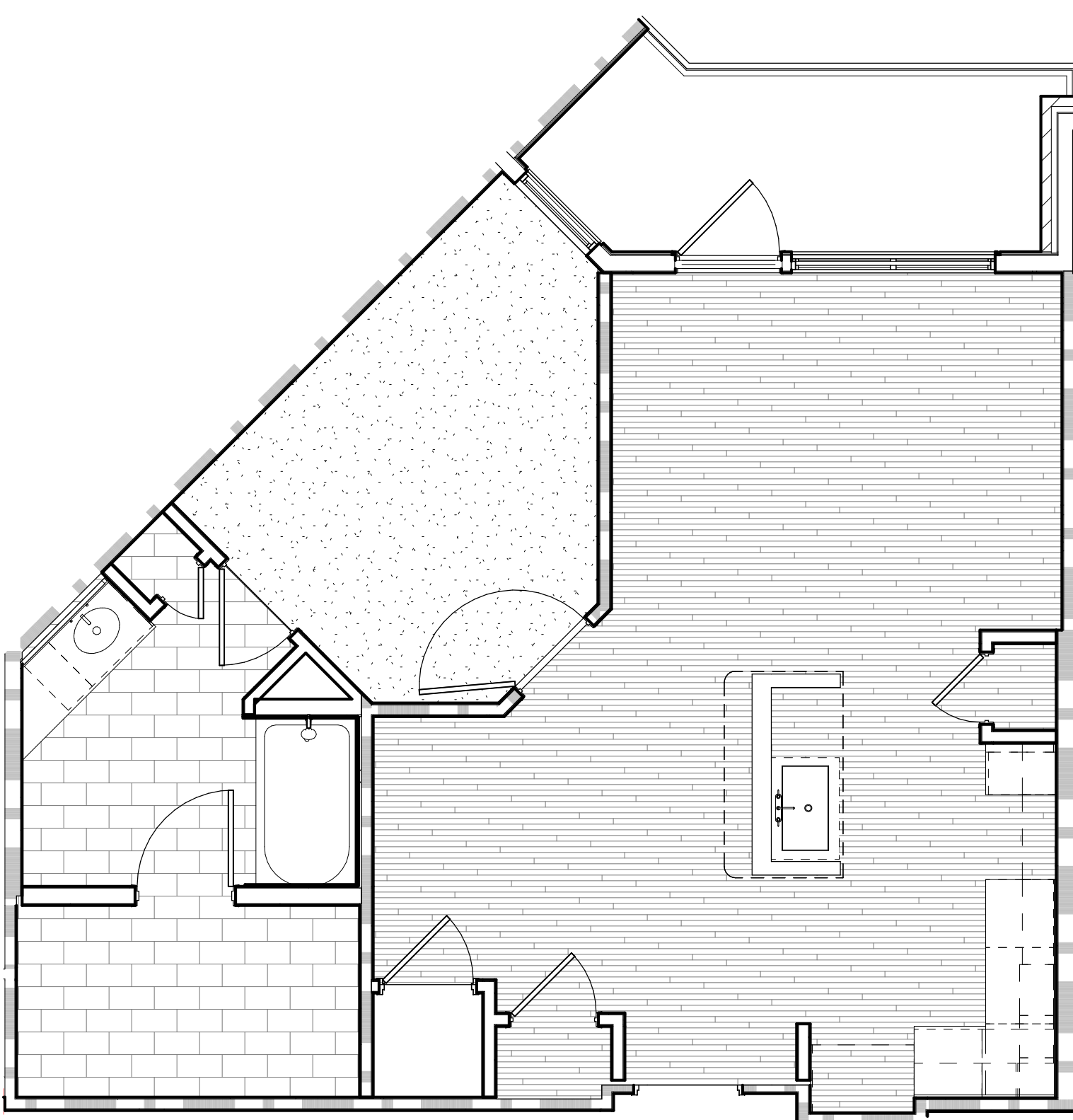
8 UNIT A3 - KITCHEN ISLAND NORTH ELEVATION  
SCALE: 1/4" = 1'-0"



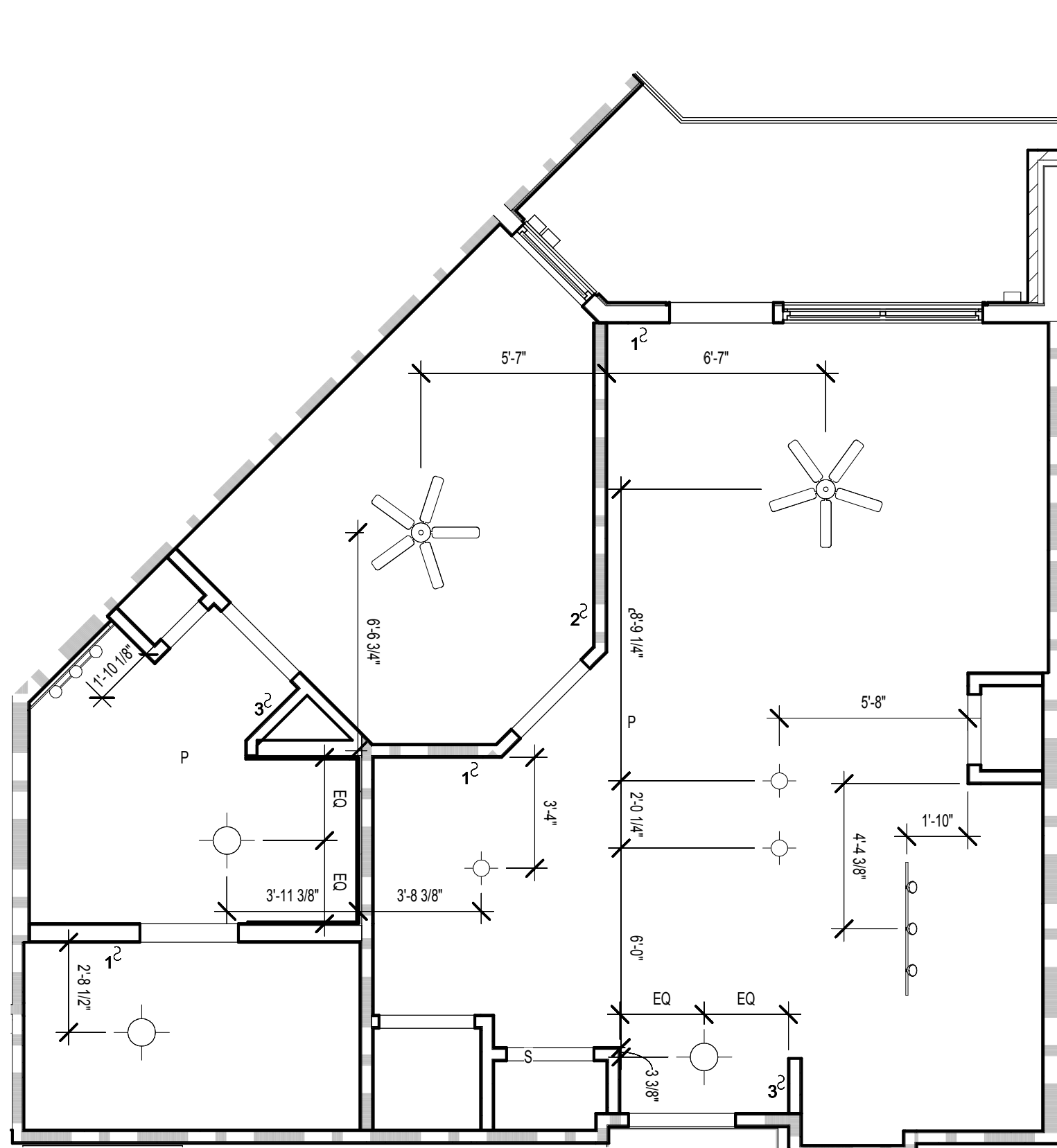
5 UNIT A3 - KITCHEN REF. ELEVATION  
SCALE: 1/4" = 1'-0"



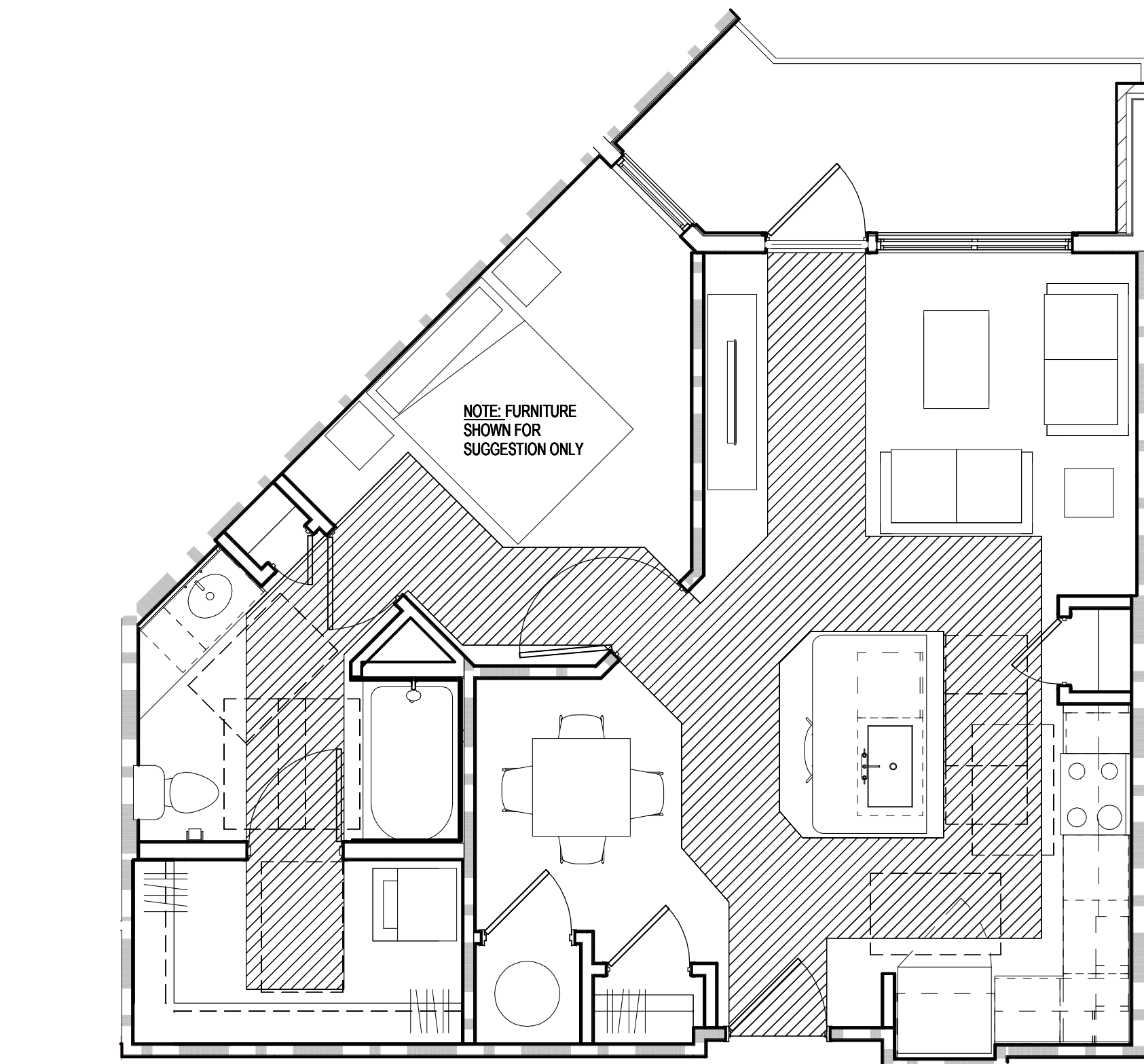
11 UNIT A3 - BATHROOM TUB ELEVATION  
SCALE: 1/4" = 1'-0"



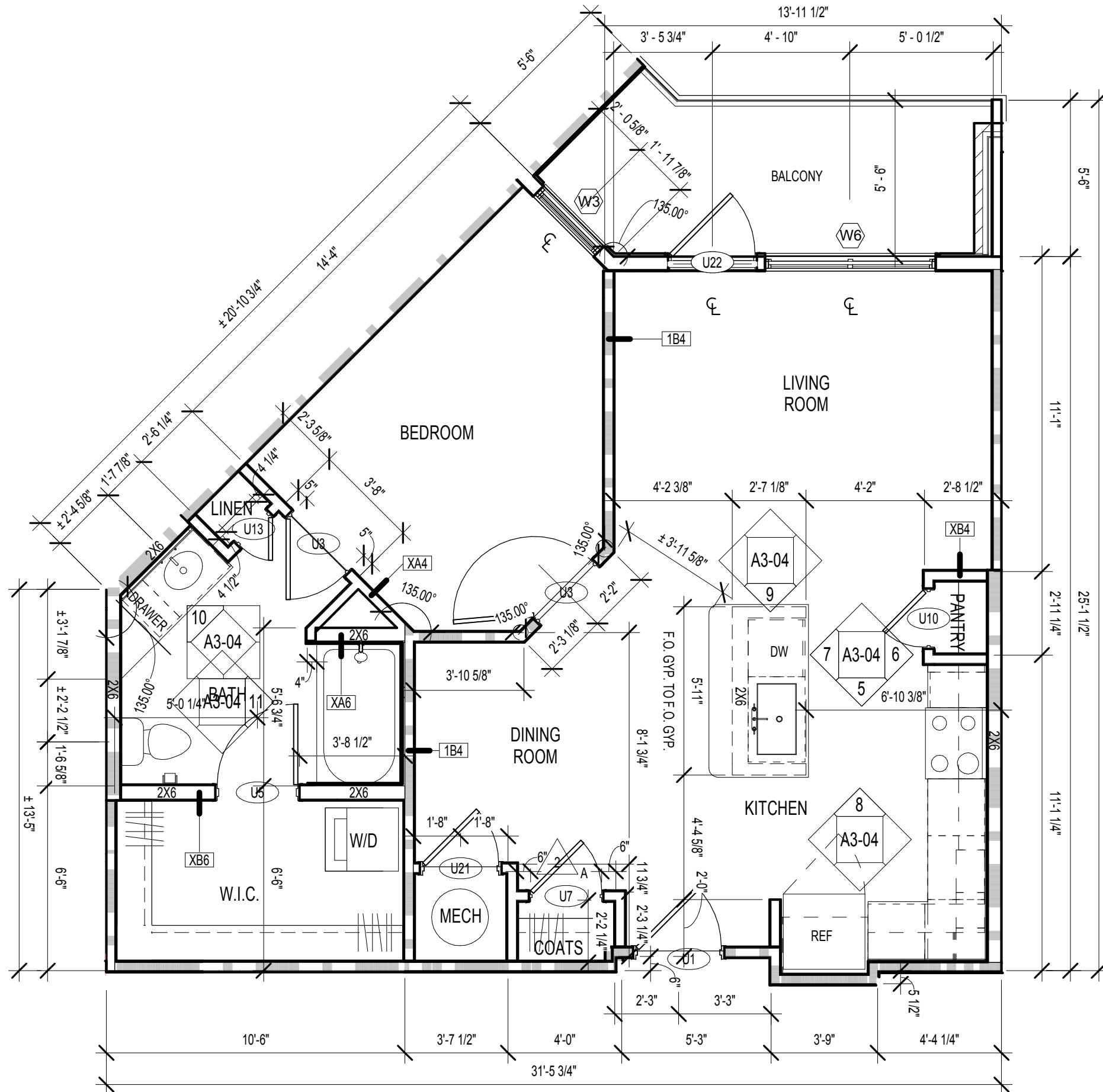
3 UNIT A3 FLOORING PLAN  
SCALE: 1/4" = 1'-0"



2 UNIT A3 RCP  
SCALE: 1/4" = 1'-0"



4 UNIT A3 FHA PLAN  
SCALE: 1/4" = 1'-0"



1 UNIT A3 FLOOR PLAN  
SCALE: 1/4" = 1'-0"

UNIT DATA	
UNIT TYPE:	A3
QUANTITY:	56
HEATED AREA:	731 SF
GROSS AREA:	816 SF

UNIT SYMBOLS					
PLAN SYMBOL	ELEV. SYMBOL	DESCRIPTION	PLAN SYMBOL	ELEV. SYMBOL	DESCRIPTION
		REFRIGERATOR			RANGE W/ MICROWAVE ABOVE AND VENTLESS HOOD
		HVAC UNIT WATER HEATER, SEE MECHANICAL DWGS			RANGE HOOD W/ HC ACCESSIBLE SWITCH; PROVIDE COUNTERTOP MICROWAVE
		DISHWASHER, BELOW COUNTERTOP			ALL-IN ONE COMBO @ H.C.
		PANTRY			WASHER & DRYER SEPARATE
		COUNTERTOP WITH SGL INTEGRATED SINK			COUNTERTOP W/ STAINLESS STEEL UNDERMOUNT KIT, SINK W/ DISPOSAL
		ELECTRICAL PANEL			ELONGATED TOILET
		36" GARDEN TUB			24" TOWEL BAR AT TUB SURROUND
		LIGHT FIXTURE-SEE SCHEDULE			SOAP DISH
		TOILET PAPER HOLDER			SHOWER HEAD
		TUB/SHOWER CONTROLS			
		SHOWER			

UNIT KEYNOTES	
1a	HIGH WIRE SHELVING, REF TO B/ A3-00
1b	2 WIRE SHELVING, REF TO C/ A3-00
2	3 CM GRANITE COUNTERTOP W/TURNDOWN AND FULL TILE BACKSPLASH WITH 1" OVERHANG TYPICAL, OR 1/2" OVERHANG AT KITCHEN ISLANDS, TYPICAL U.N.O.
3	CURVED SHOWER CURTAIN ROD
4	MIRROR AS PER I.D. DWGS TO BE CTDR OVER COUNTERTOP WIDTH. BOTTOM OF REFLECTIVE SURFACE TO BE 40" A.F.F. MAX
5	34" HIGH COUNTER TOP SURFACE AREA; PROVIDE 30" WIDE REMOVABLE BASE CABINET BELOW SINK; EXTEND FLOOR FINISH UNDERNEATH.
6	REMOVABLE BASE CABINET BELOW
7	2CM GRANITE VANITY COUNTERTOP WITH INTEGRATED BOWL.

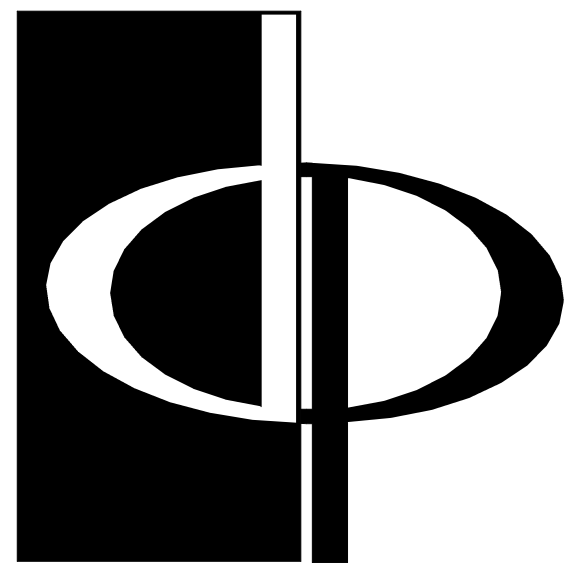
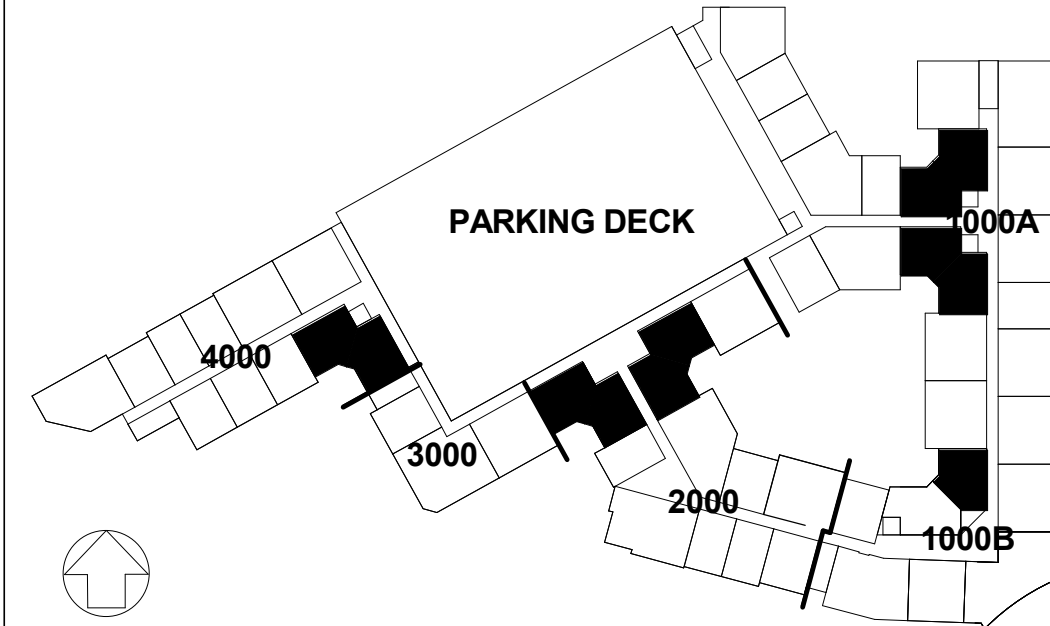
UNIT RCP LEGEND	
	CEILING FAN AND LIGHT COMBO UNIT
	SURFACE MOUNTED FIXTURE (FOYER, CLOSETS)
	PENDANT LIGHTING FIXTURE
	TRACK LIGHTING (KITCHEN)
	WALL MOUNTED VANITY LIGHT
	RECESSED LIGHTING FIXTURE
	WALL MOUNTED SCONCE FIXTURE (EXTERIOR)
	EXHAUST FAN
	DROPPED CEILING AREA (SEE PLAN FOR HEIGHT)
	FINISHED CEILING HEIGHT A.F.F.

RCP GENERAL NOTES	
1.	COORDINATE FIXTURE METALS WITH ALL OTHER ARCHITECTURAL METALS, TYP.
2.	ALL SOFFITS WITHIN A SINGLE ROOM ARE THE SAME HEIGHT, TYP., UNLESS NOTED OTHERWISE
3.	REFER TO ELECTRICAL DWGS. FOR ADDITIONAL INFORMATION
4.	ALL CEILING HEIGHTS TO BE 9'-0" - UNLESS OTHERWISE NOTED

UNIT FLOORING LEGEND	
	VINYL WOOD PLANK W/ SOUND MAT
	CARPET
	CERAMIC TILE W/ SOUND MAT

GENERAL NOTES	
1.	REFER TO SHEET A3-00 FOR UNIT PLAN NOTES AND SHELVING AS INDICATED: (X)
2.	ELECTRICAL OUTLETS SHALL NOT BE CUT INTO MIRROR
3.	ALL UNIT INTERIOR PARTITIONS ARE 1 B4, U.N.O.
4.	SEE REINFORCING BLOCKING INFORMATION ON SHEET CD-21
5.	AT UNIT ELEVATIONS WHERE CASEWORK IS SHOWN, DIMENSIONS ARE FROM FINISH FACE OF WALL TO FACE OF CABINET
6.	SEE SHEET A8-02 FOR ALL FLOOR FINISH TRANSITIONS
7.	SEE BUILDING PLANS AND ELEVATIONS FOR ALL EXTERIOR FINISH/SKIN CONDITIONS

KEYPLAN



THE PRESTON PARTNERSHIP, LLC  
A MULTI-DISCIPLINARY DESIGN FIRM  
SOUTH TERRACES  
115 PERIMETER CENTER PLACE, SUITE 950  
ATLANTA, GEORGIA 30346  
TELEPHONE: 770 396 7248  
FAX: 770 396 2945

WWW.THEPRESTONPARTNERSHIP.COM  
CONSULTANT

SEAL



PROJECT  
RESERVE AT THE BALLPARK, PHASE II,  
AKA REVEL AT THE BALLPARK  
2885 CRESCENT PKWY  
SMYRNA, GA 30080

FOR



ATLANTIC REALTY PARTNERS  
3438 PEACHTREE ROAD  
SUITE 1425  
ATLANTA, GA 30326

ISSUES & REVISIONS	DATE
CONCEPTUAL DESIGN	08/21/2015
SCHEMATIC DESIGN	09/28/2015
CM/CD DESIGN DEVELOPMENT	10/15/2015
GMP	04/03/2017
PERMIT SET	05/22/2017
2. ADA COMMENTS / COORDINATION	07/25/2017
3. BUILDING PERMIT	07/25/2017

DATE	05/22/2017
JOB NUMBER	1493101
DRAWN BY	EKS/NB
CHECKED BY	CW
SHEET TITLE	UNIT A3 PLANS AND ELEVATIONS
SHEET NUMBER	A3-04
COMMENTS	BUILDING PERMIT RE-SUBMISSION

30X42 © 2017 The Preston Partnership, LLC