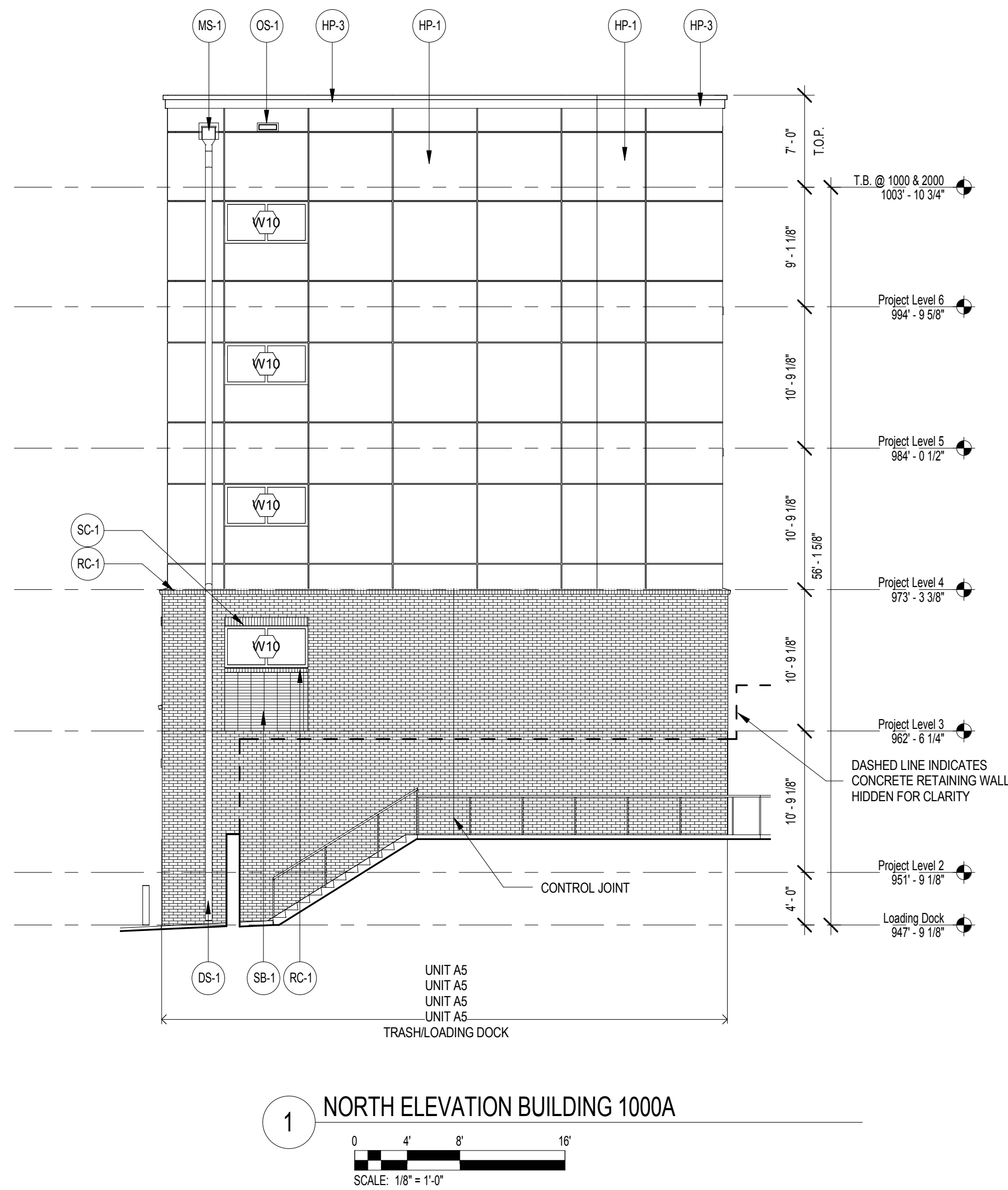
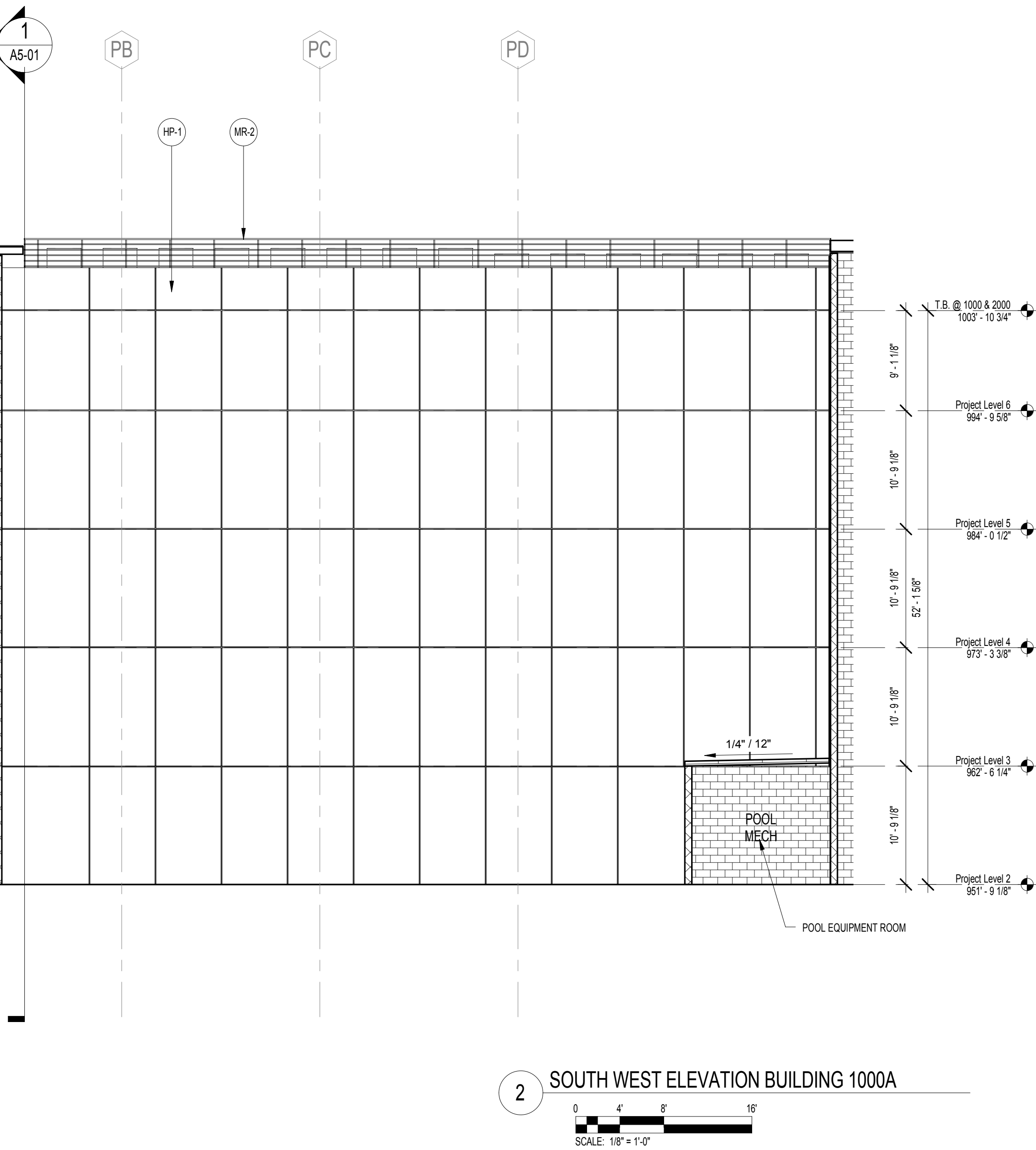
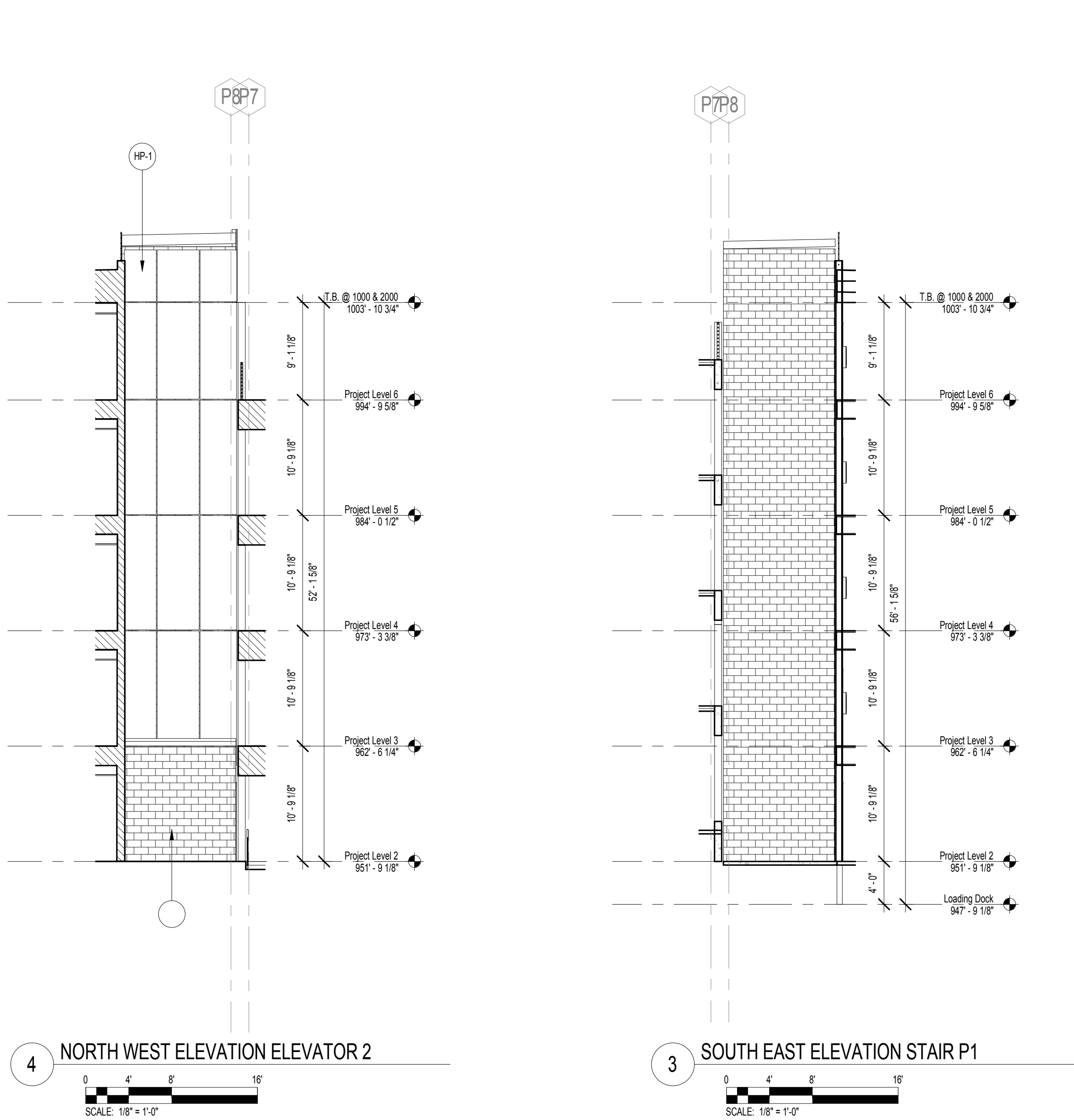


C:\Data File\Revit\2016\1483101 Circle 75 IL R16-C\_painMk.rvt 10/4/2017 8:03:22 PM



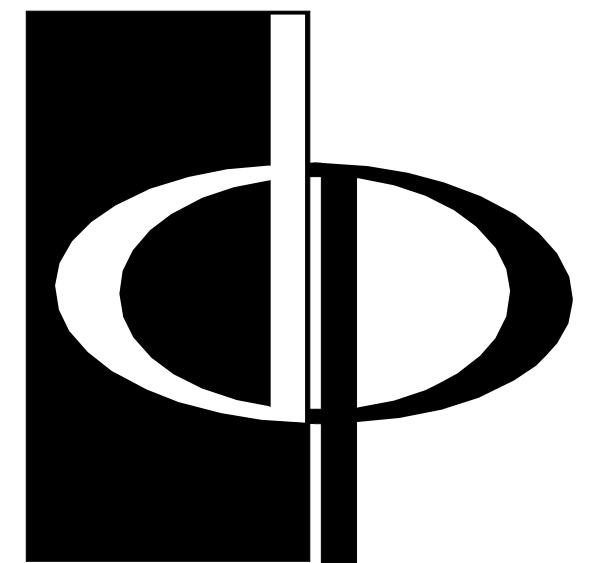
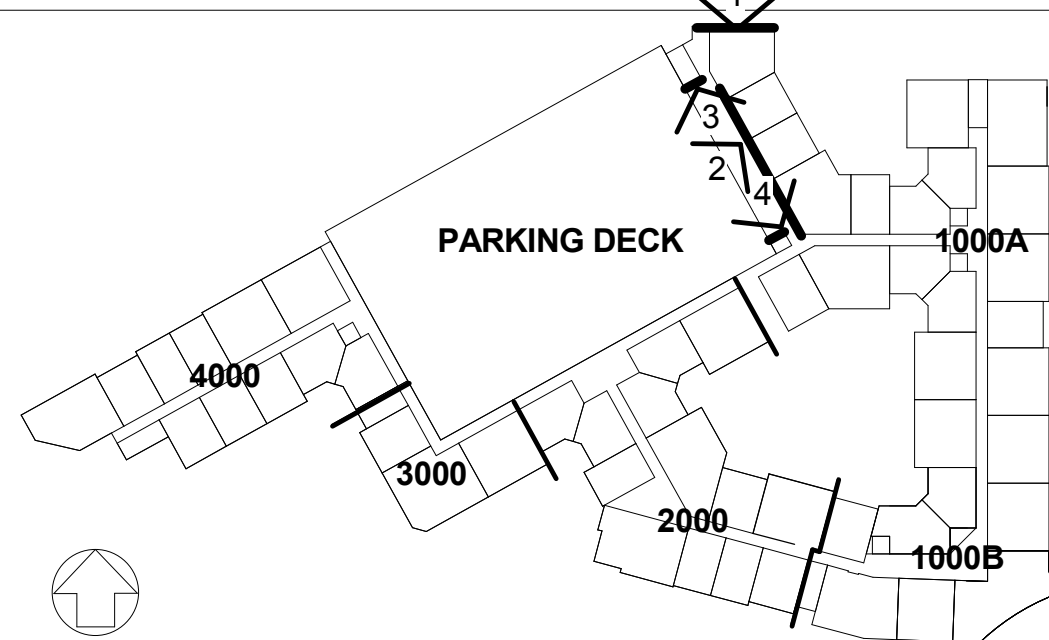
EXTERIOR FINISH KEY

WALL FINISHES			
TAG	MATERIAL DESCRIPTION	COLOR	MANUFACTURER
BM-1	BREAK METAL	TO MATCH STOREFRONT	YKK OR EQUAL
BR-1	BRICK VENEER	SMOOTH LIGHT GRAY	CHEROKEE
BR-2	BRICK MORTAR	TBD	
BR-2	BRICK VENEER	RED FLASHED SMOOTH	CAROLINA CERAMICS
C-1	METAL COPING	TBD	
C-1	METAL COPING	MATCH ADJACENT HARDIE	
CS-1	CAST STONE CAP	CHAMPAGNE	BORAL
DS-1	DOWN SPOUT	DARK BRONZE	TBD
HP-1	HARDIE PANEL W/ 1" REVEAL, PAINTED	SW 8249 STORM CLOUD	JAMES HARDIE
HP-2	HARDIE PANEL W/ 1" REVEAL, PAINTED	SW 7020 BLACK FOX	JAMES HARDIE
HP-3	HARDIE PANEL W/ 1" REVEAL, PAINTED	SW 7064 PASSIVE	JAMES HARDIE
HP-4	HARDIE PANEL W/ 1" REVEAL, PAINTED	SW 7528 WINDSOR GREIGE	JAMES HARDIE
HP-5	HARDIE PANEL W/ 1" REVEAL, PAINTED	SW 8817 SHELL WHITE	JAMES HARDIE
LT-1	LIGHT FIXTURE 1 -		
LT-2	LIGHT FIXTURE 2 -		
LT-3	LIGHT FIXTURE 3 -		
MB-1	MODULAR BLOCK WALL	MATCH BR-2 COLOR	REDI-ROCK
MC-1	METAL CANOPY	CLEAR ANODIZED	TBD
ML-1	METAL LOUVER		
MP-1	METAL PANEL	BONE WHITE	REYNOLDS
MR-1	METAL RAILING BALCONIES (M442)	CLEAR ANODIZED	BANKER WIRE
MR-2	METAL GUARDRAIL ROOF	TBD	
MS-1	METAL SCUPPER	TO MATCH ADJACENT SURFACE	
OS-1	OVERFLOW SCUPPER	TO MATCH ADJACENT SURFACE	TBD
PC-1	PRECAST CONCRETE PANEL	EXPOSED CONCRETE	BY PRECASTER
PR-1	PIPE RAILING		
RC-1	ROWLOCK COURSE	SMOOTH LIGHT GRAY	CHEROKEE
RC-2	ROWLOCK COURSE MORTAR	RED FLASHED SMOOTH	CAROLINA CERAMICS
RC-2	ROWLOCK COURSE MORTAR	WHITE	TBD
S-1	SIGNAGE 1-BLADE SIGN	SMOOTH LIGHT GRAY	CHEROKEE
SC-1	SOLDIER COURSE	TBD	
SC-2	SOLDIER COURSE MORTAR	RED FLASHED SMOOTH	CAROLINA CERAMICS
SC-2	SOLDIER COURSE MORTAR	WHITE	TBD
SB-1	STACKED BOND	SMOOTH LIGHT GRAY	CHEROKEE
SB-2	STACKED BOND MORTAR	TBD	
SB-2	STACKED BOND MORTAR	RED FLASHED SMOOTH	CAROLINA CERAMICS
SB-2	STACKED BOND MORTAR	WHITE	TBD
SF-1	STOREFRONT	CLEAR ANODIZED	TUBEUTE, YKK OR EQUAL
VT-1	4" TOILET DRYER EXHAUST VENT	MATCH ADJACENT MATERIAL	X VENT BOX
VT-2	6" FRESH AIR INTAKE (COURTYARD UNITS ONLY - CEILING MOUNTED)	MATCH ADJACENT MATERIAL	X VENT BOX
W-1	WINDOW, ALUM.	CLEAR ANODIZED	M.I. (NOTE 15)
W-2	WINDOW, ALUM.	DARK ANODIZED	M.I. (NOTE 16)

NOTES:

1. FINISH FLOOR ELEVATION AT BUILDING 1000 A/B = 941'0"
2. FINISH FLOOR ELEVATION AT BUILDING 2000 = 951'-9 1/8"
3. FINISH FLOOR ELEVATION AT BUILDING 3000 = 962'-6 1/4"
4. FINISH FLOOR ELEVATION AT BUILDING 4000 = 973'-3 3/8"
5. FINISH GRADE AT BUILDING ENTRANCES SHALL BE NO GREATER THAN 1/2" BELOW FINISH FLOOR.
6. PROVIDE MIN 1/2" E.J. BETWEEN THIN BRICK AND MODULAR BRICK
7. WHERE SLAB EDGE @ STOREFRONT IS EXPOSED, PROVIDE BREAK METAL TO MATCH
8. GC TO PAINT ALL SPRINKLER STANDPIPES IN STAIRS BLACK
9. GC TO PAINT ALL BOLLARDS IN PARKING/LOADING AREA. COLOR TBD
10. BRICK CONTROL JOINTS AS SHOWN. WHERE NOT SHOWN, C.J. SHALL NOT EXCEED 24" MAX.
11. NO VENTS WITHIN 4'-0" OF ALL BUILDING FIRE WALLS.
12. NO WINDOWS WITHIN 2'-0" (4'-0") OF ALL BUILDING FIRE WALLS. - SEE A5-06
13. SEE 5'-0" FOR WINDOW WIND LOADS
14. IN WHITE (OR LIGHT COLOR) HARDIE PANELS, WINDOWS TO BE DARK BRONZE
15. IN DARK COLORED HARDIE PANELS, WINDOWS TO BE CLEAR ANODIZED
16. PROVIDE METAL REVEAL AROUND WINDOWS - DO NOT INSTALL BRICK MOLD TRIM AROUND WINDOWS INSET IN HARDIE PANELS UNLESS APPROVED BY OWNER.
17. BRICK MOLD TRIM AT WINDOWS MAY BE ADDED TO #16 ABOVE, IF APPROVED BY OWNER.
18. PROVIDE 5-1/2" HARDIE TRIM BETWEEN ALL BALCONY BARS AND TRIPLE WINDOWS

KEYPLAN



THE PRESTON  
PARTNERSHIP, LLC  
A MULTI-DISCIPLINARY DESIGN FIRM

SOUTH TERRACES  
115 PERIMETER CENTER PLACE, SUITE 950  
ATLANTA, GEORGIA 30346  
TELEPHONE: 770 396 7248  
FAX: 770 396 2945

WWW.THEPRESTONPARTNERSHIP.COM

CONSULTANT

SEAL



PROJECT

RESERVE AT THE  
BALLPARK, PHASE II,  
AKA REVEL AT THE  
BALLPARK  
2885 CRESCENT PKWY  
SMYRNA, GA 30080

FOR



ATLANTIC REALTY  
PARTNERS

3438 PEACHTREE ROAD  
SUITE 1425  
ATLANTA, GA 30326

ISSUES & REVISIONS	DATE
CONCEPTUAL DESIGN	08/21/2015
PROGRESS SET	09/02/2015
SCHEMATIC DESIGN	09/28/2015
GMP/DESIGN DEVELOPMENT	10/15/2015
FOUNDATION PACKAGE	12/07/2015
GMP	04/03/2017
PERMIT SET	05/22/2017
3. BUILDING PERMIT	07/26/2017

DATE 05/22/2017

JOB NUMBER 1493101

DRAWN BY EKS

CHECKED BY CWB

SHEET TITLE BUILDING ELEVATIONS

SHEET NUMBER

A4-16

COMMENTS BUILDING PERMIT RE-SUBMISSION

30X42

© 2017 The Preston Partnership, LLC