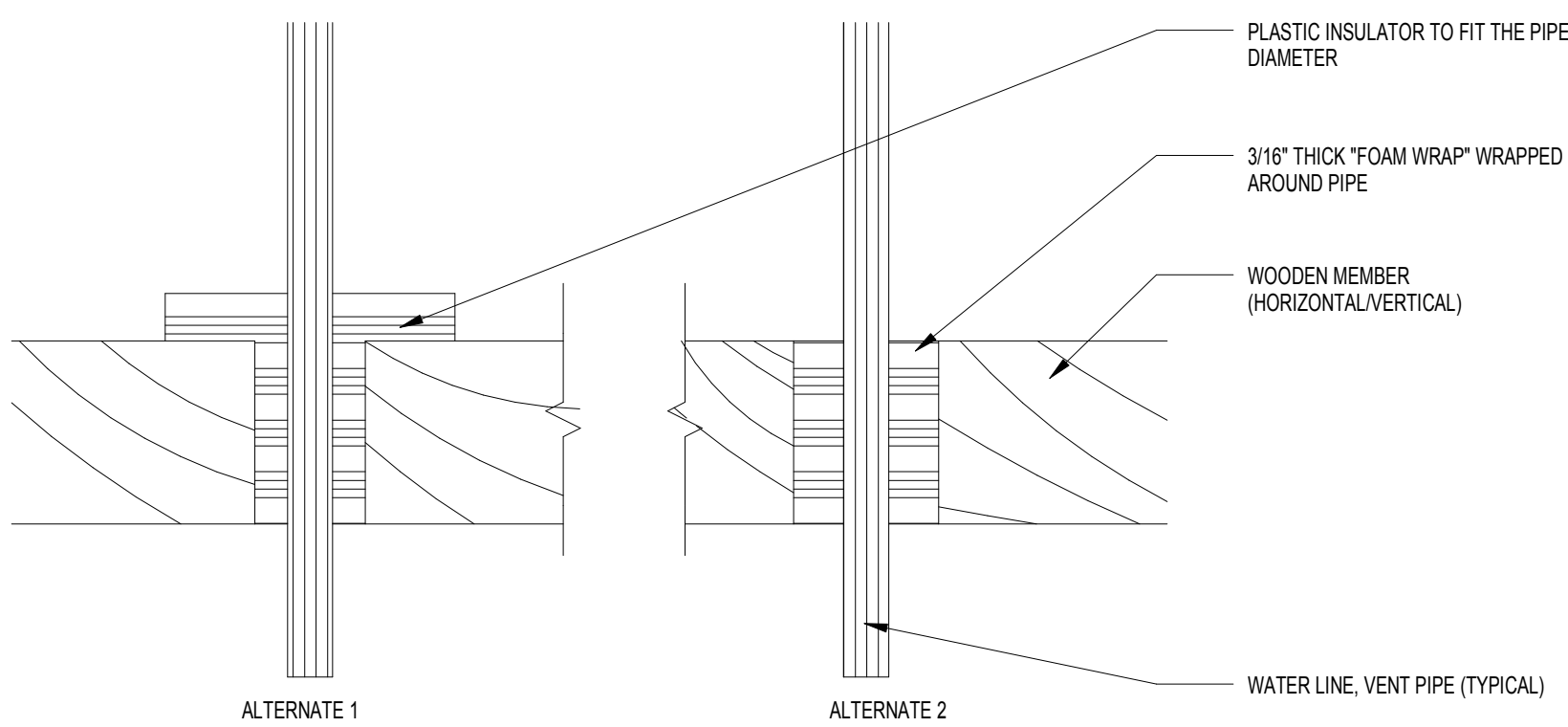
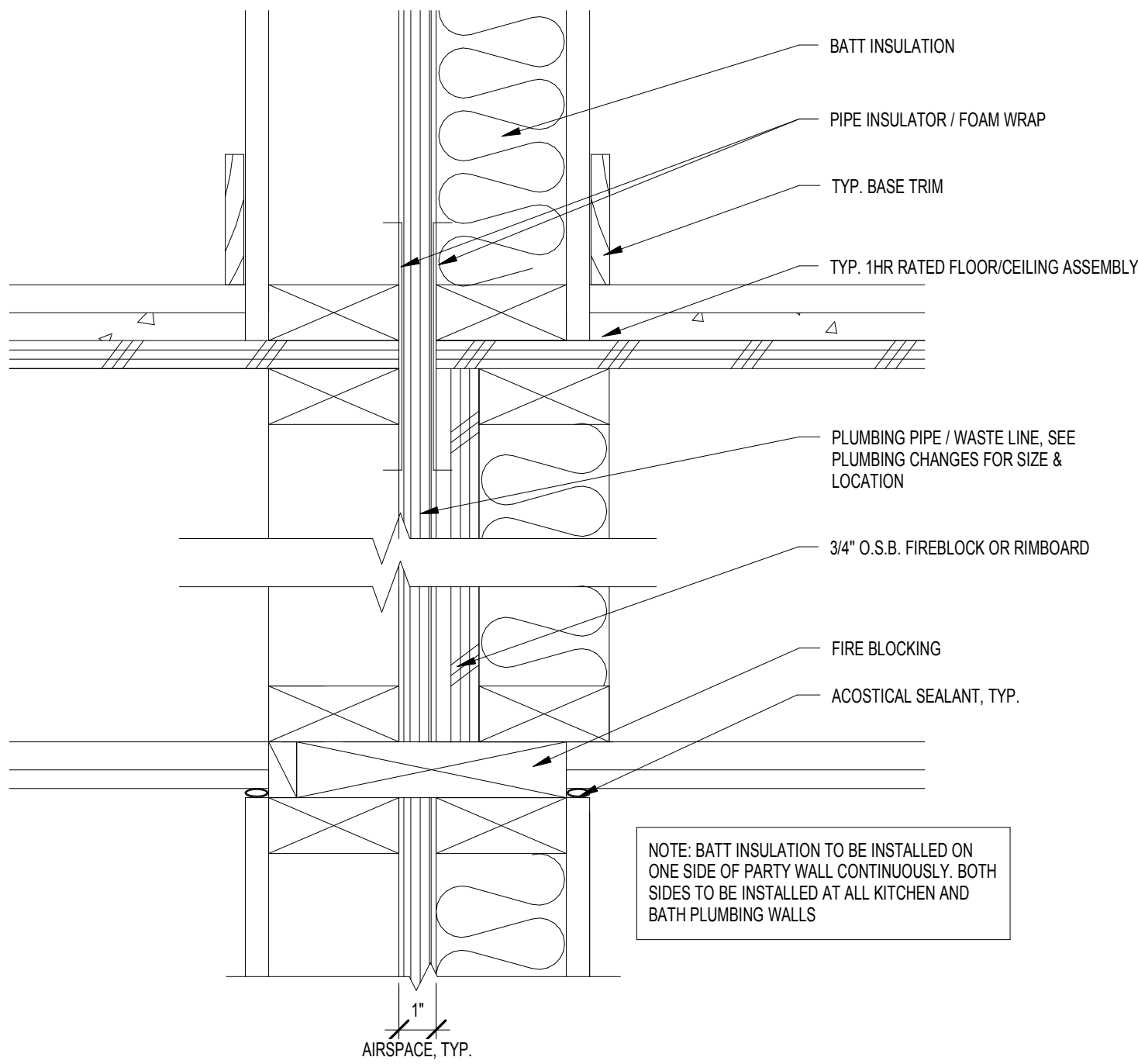


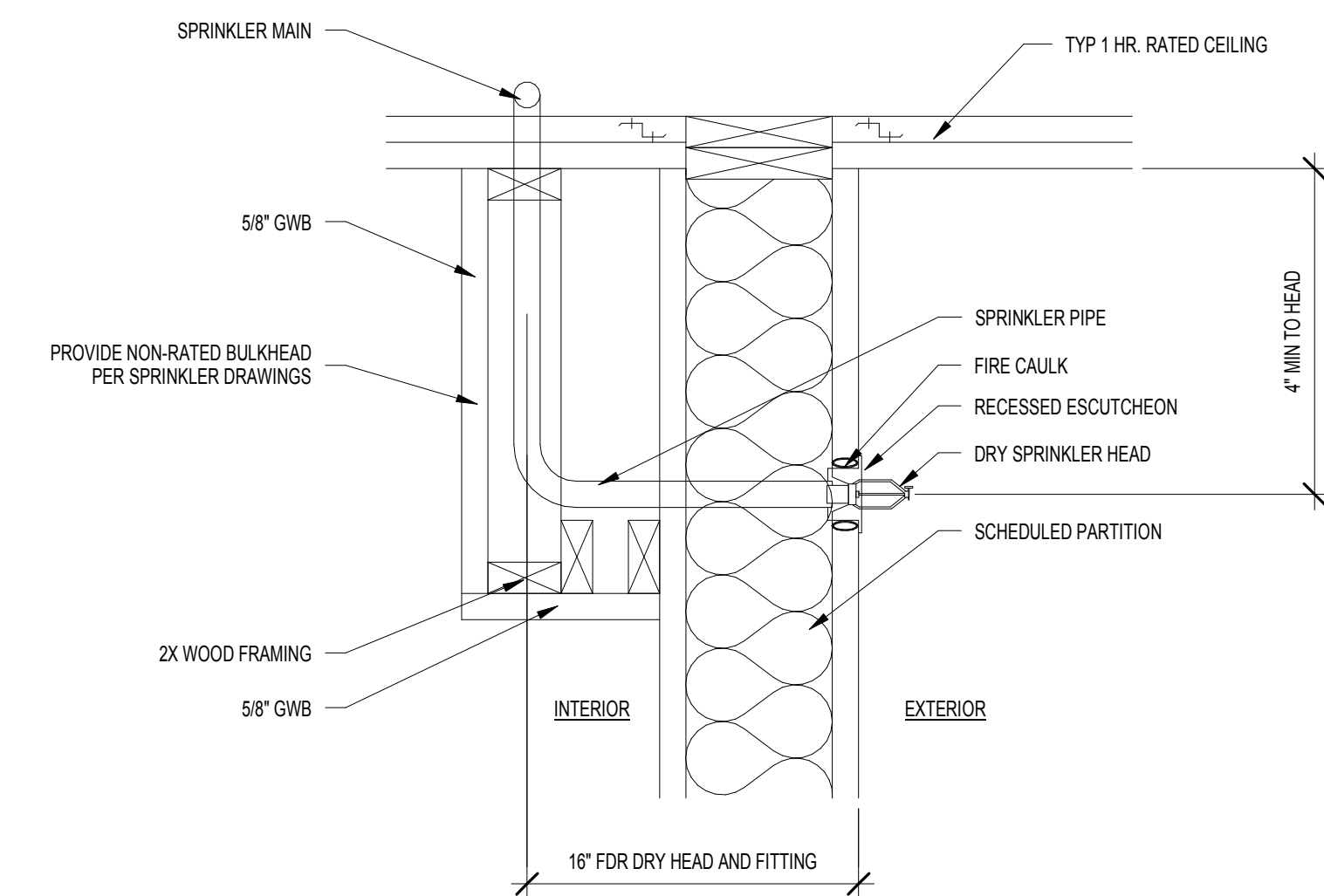
C:\Data File\Revit\2016\1493101 Circle 75 IL R16-C_drawing.rvt 10/4/2017 8:04:02 PM



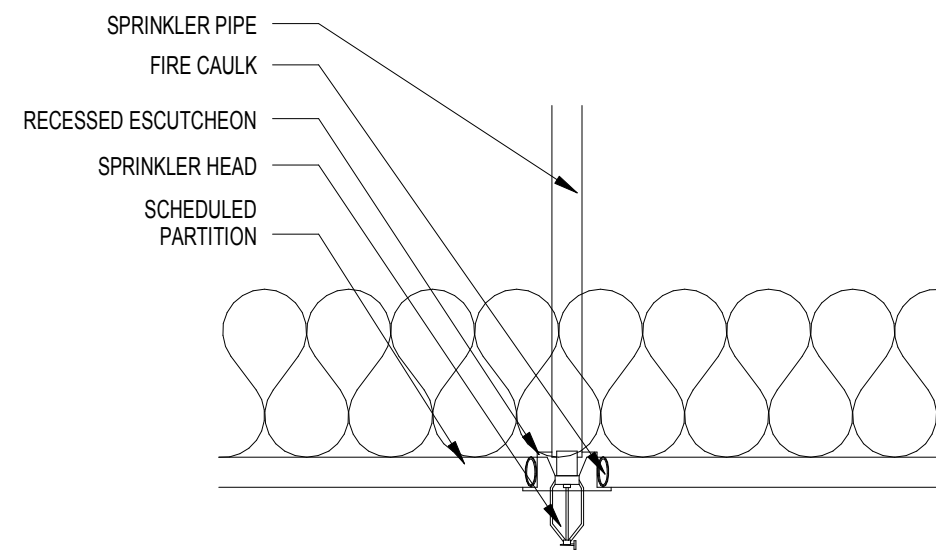
11 PLUMBING ISOLATION DETAIL
SCALE: 3" = 1'-0"



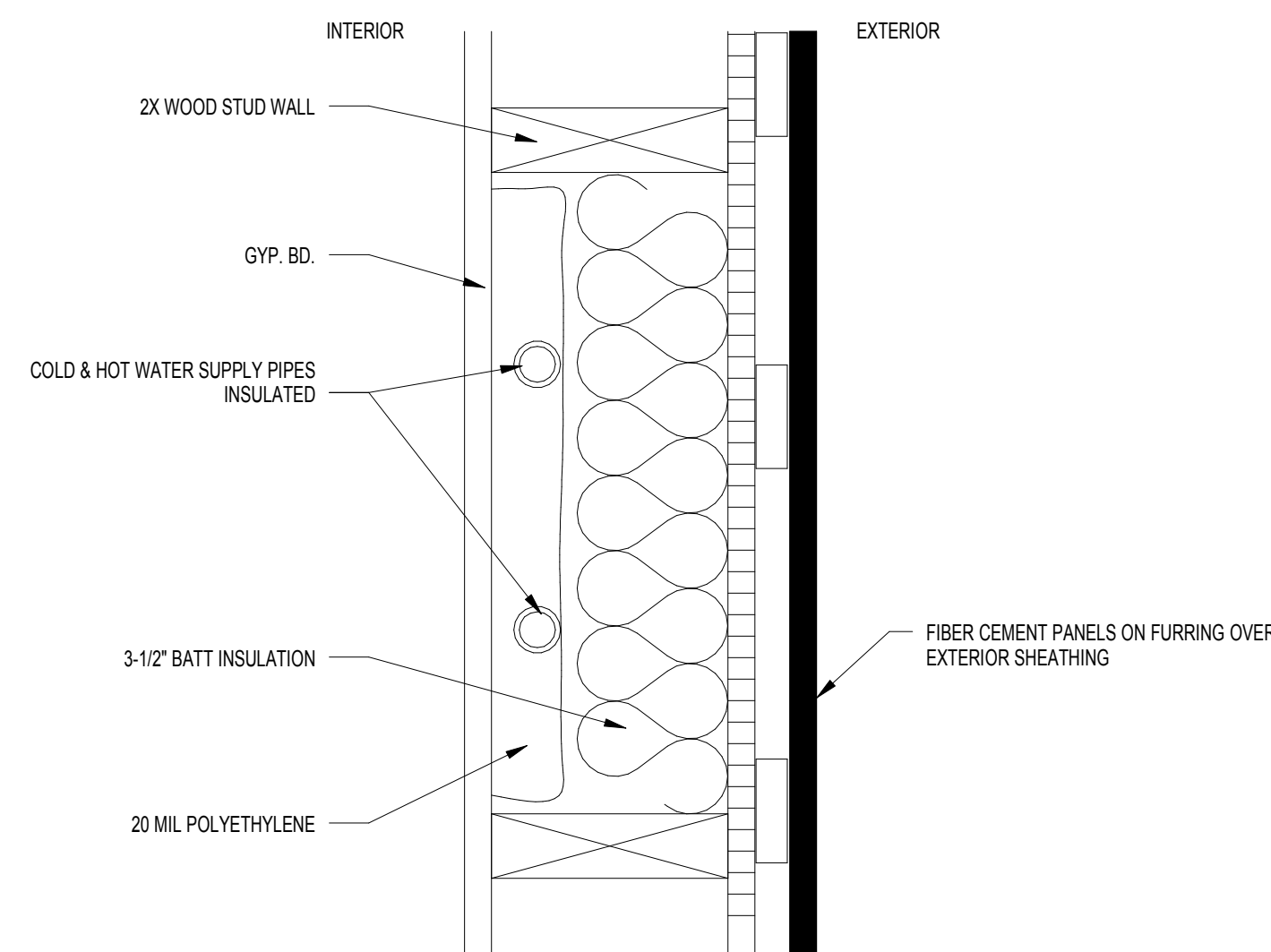
10 SECTION OF PLUMBING INSULATION AT TENANT SEPARATION WALL
SCALE: 3" = 1'-0"



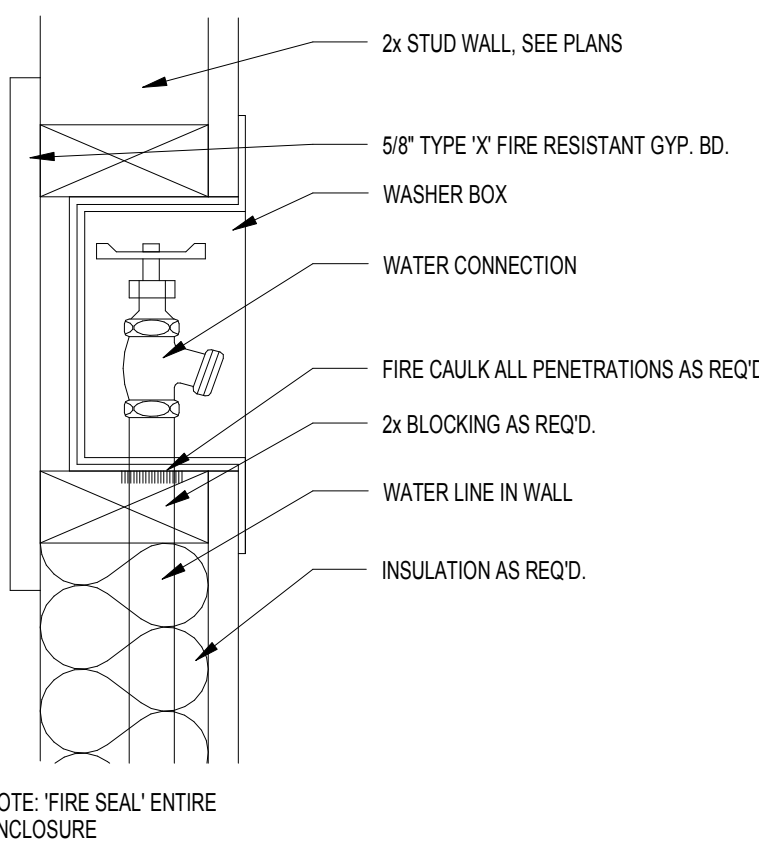
9 SECTION OF DRY SPRINKLER PIPE HEAD PENETRATION IN RATED WALL
SCALE: 3" = 1'-0"



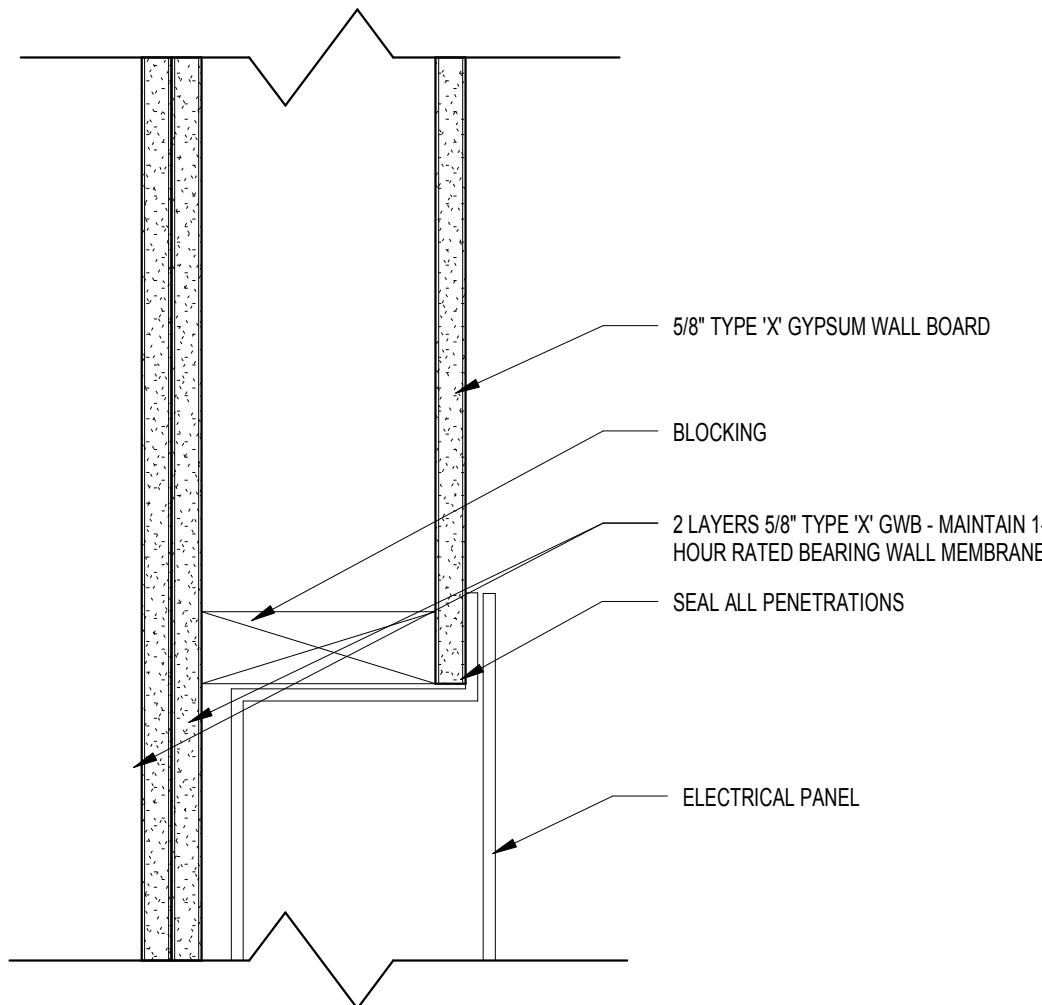
8 SPRINKLER PIPE PENETRATION DETAIL
SCALE: 3" = 1'-0"



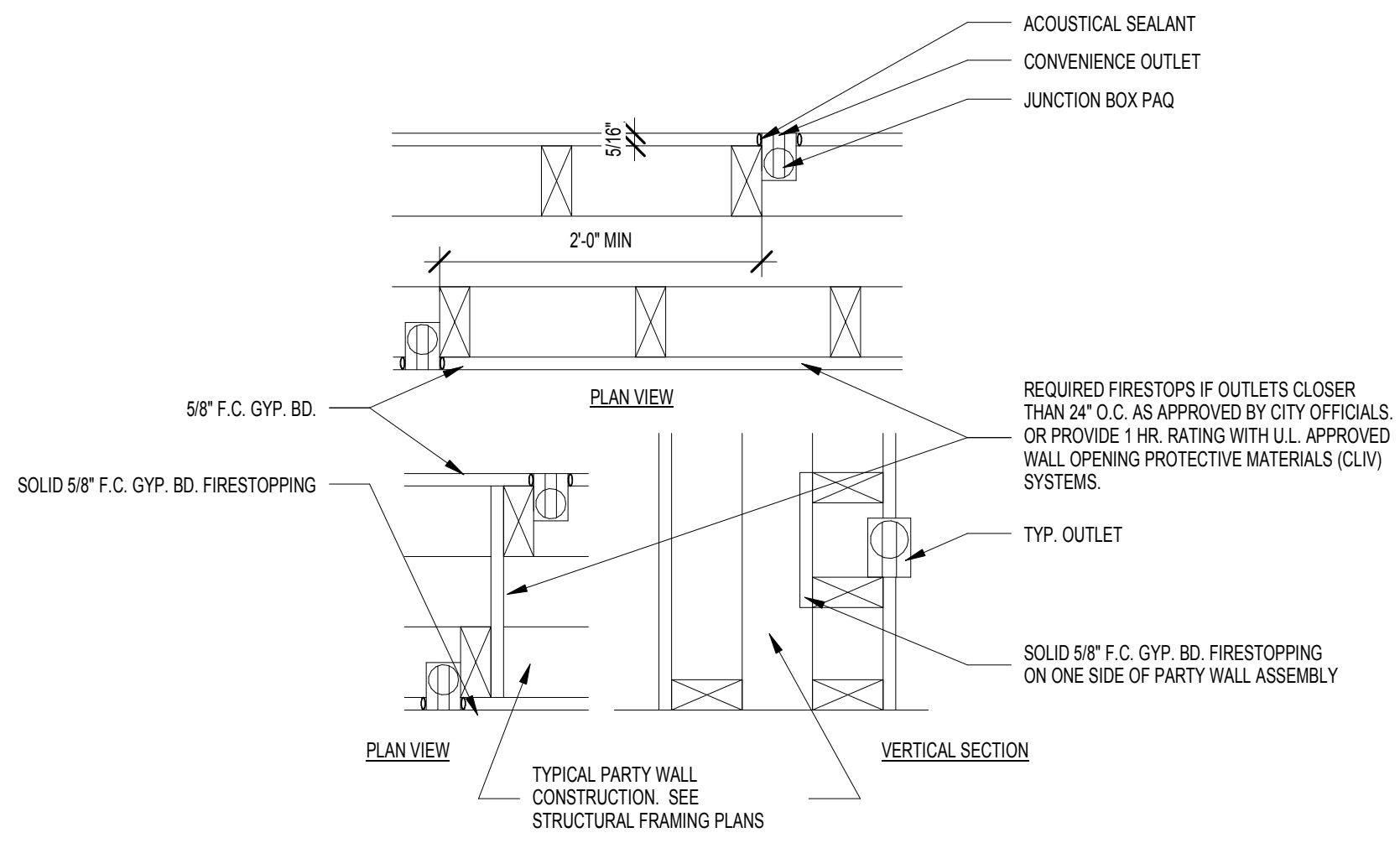
7 PLUMBING @ EXTERIOR WALL
SCALE: 3" = 1'-0"



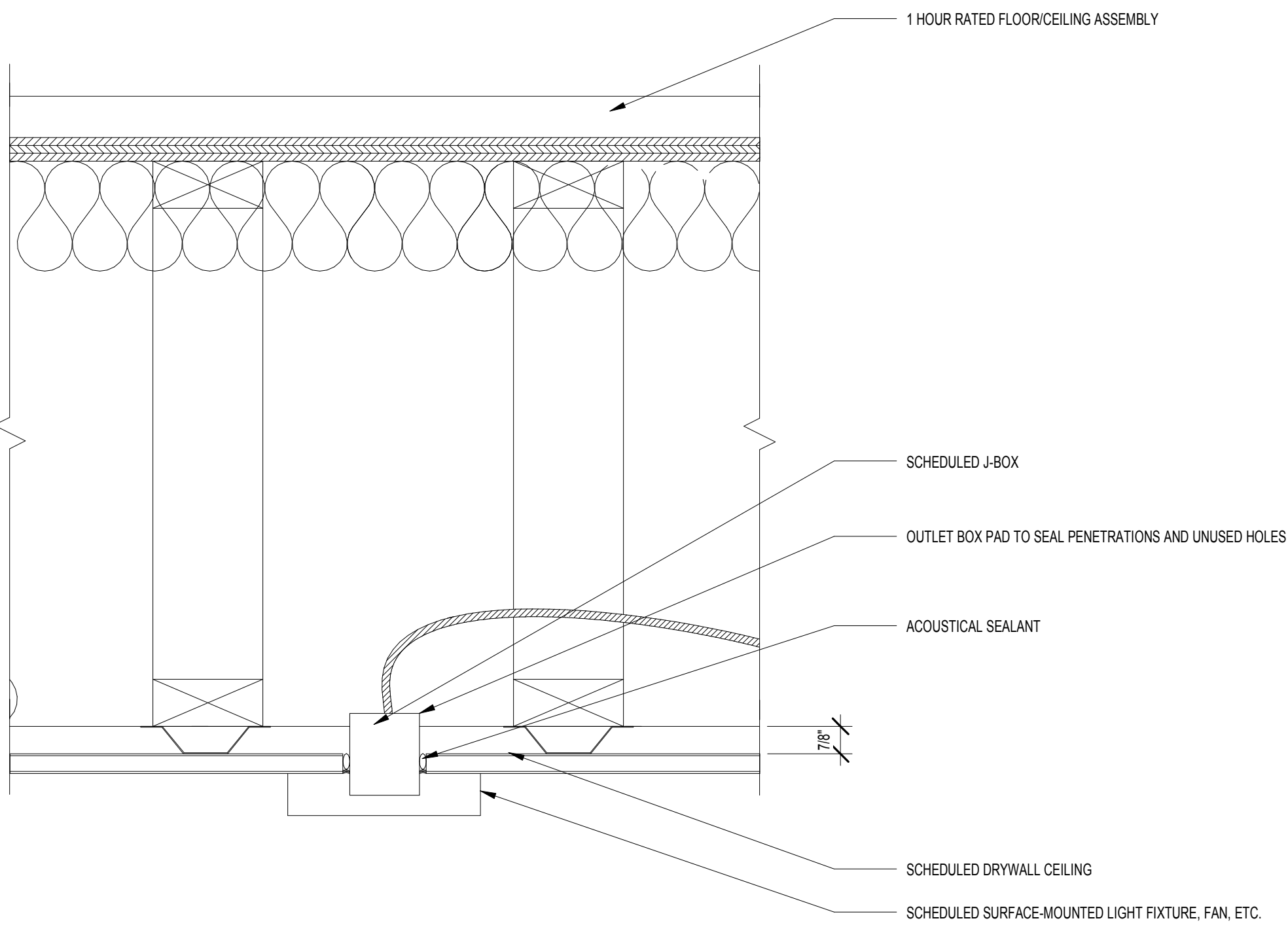
6 WASHER BOX ENCLOSURE DETAIL
SCALE: 3" = 1'-0"



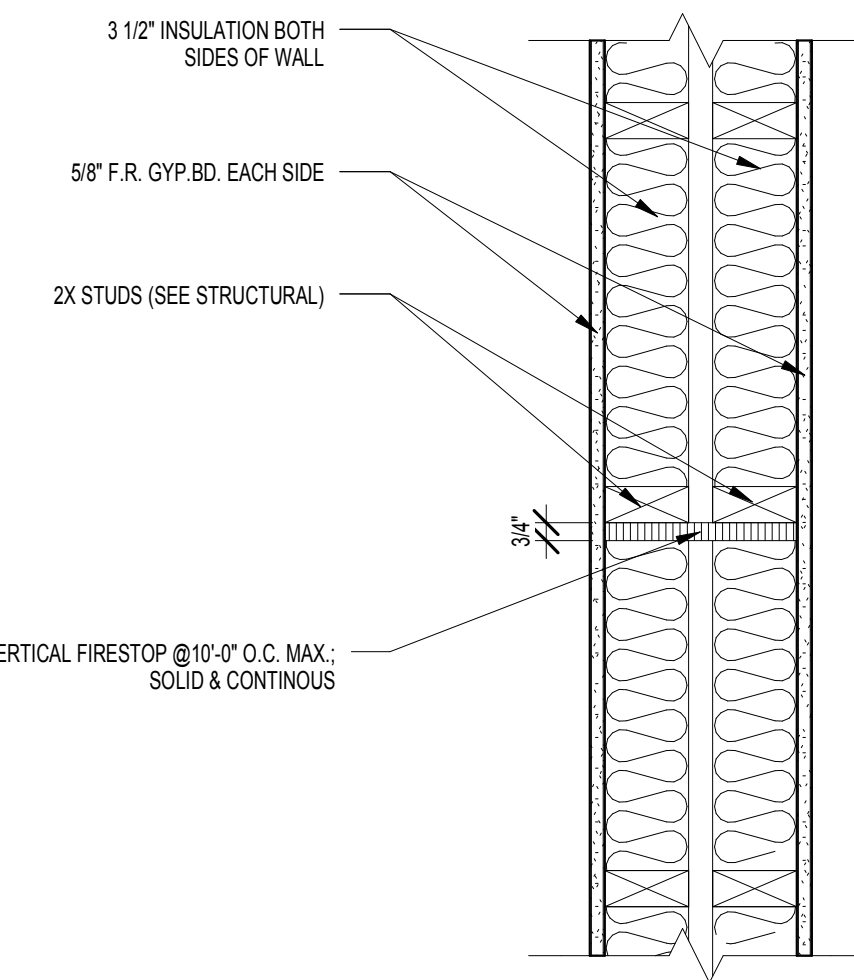
5 ELEC. PN. @ RATED PARTITION
SCALE: 3" = 1'-0"



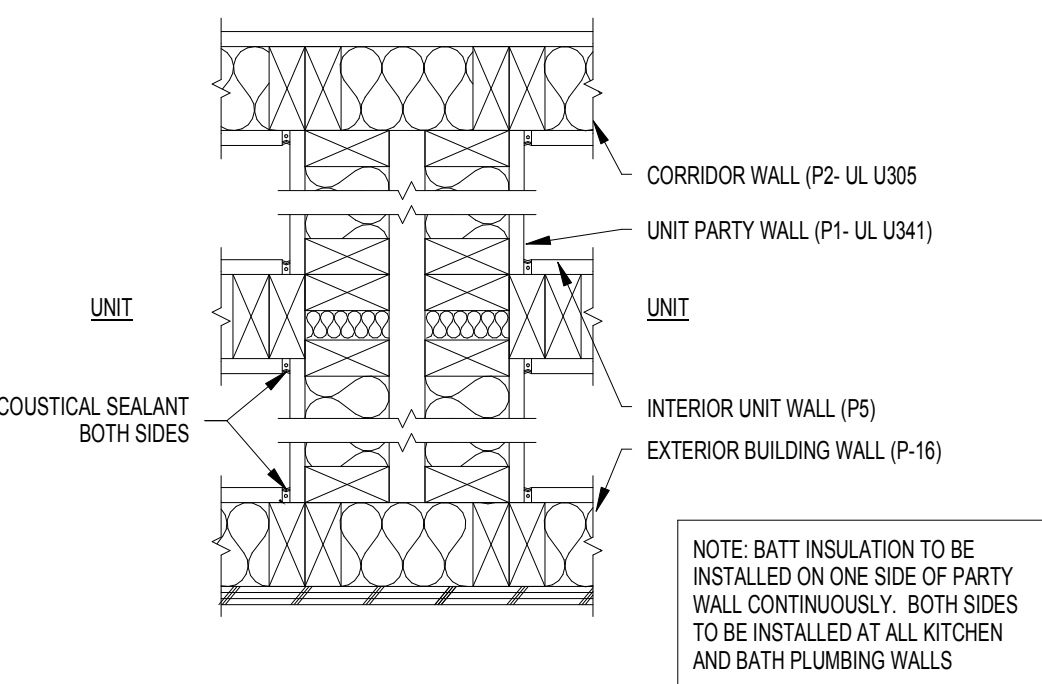
4 ELEC. OUTLET LOCATIONS @ RATED WALLS
SCALE: 3" = 1'-0"



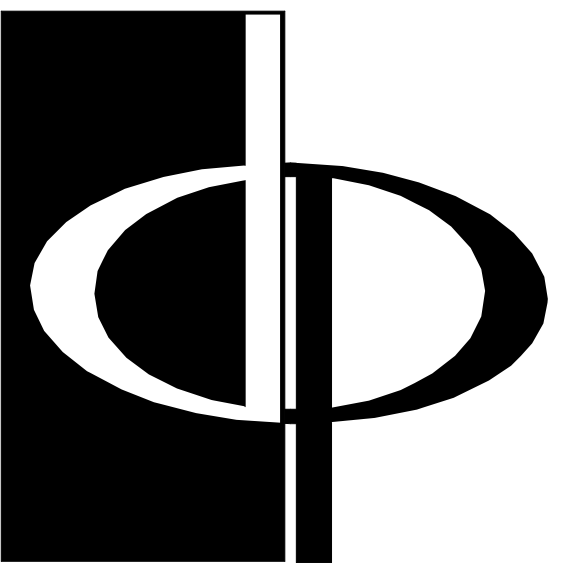
3 DETAIL AT RECESSED LIGHT FIXTURE
SCALE: 3" = 1'-0"



2 FRAMING PLAN VERTICAL FIRE STOP 1" TENANT SEPARATION
SCALE: 1 1/2" = 1'-0"



1 FRAMING PLAN AT TENANT SEPARATION WALL
SCALE: 1 1/2" = 1'-0"



THE PRESTON
PARTNERSHIP, LLC
A MULTI-DISCIPLINARY DESIGN FIRM

SOUTH TERRACES
115 PERIMETER CENTER PLACE, SUITE 950
ATLANTA, GEORGIA 30346
TELEPHONE: 770 396 7248
FAX: 770 396 2945

WWW.THEPRESTONPARTNERSHIP.COM
CONSULTANT

SEAL



PROJECT

RESERVE AT THE
BALLPARK, PHASE II,
AKA REVEL AT THE
BALLPARK
2885 CRESCENT PKWY
SMYRNA, GA 30080

FOR



ATLANTIC REALTY
PARTNERS

3438 PEACHTREE ROAD
SUITE 1425
ATLANTA, GA 30326

ISSUES & REVISIONS	DATE
CONCEPTUAL DESIGN	08/21/2015
SCHEMATIC DESIGN	09/28/2015
CM/CD DESIGN DEVELOPMENT	10/15/2015
GMP	04/03/2017
PERMIT SET	05/22/2017
3. BUILDING PERMIT	07/25/2017

DATE 05/22/2017

JOB NUMBER 1493101

DRAWN BY NP

CHECKED BY PA

SHEET TITLE FRAMING DETAILS

SHEET NUMBER

COMMENTS BUILDING PERMIT RE-SUBMISSION

30X42 © 2017 The Preston Partnership, LLC