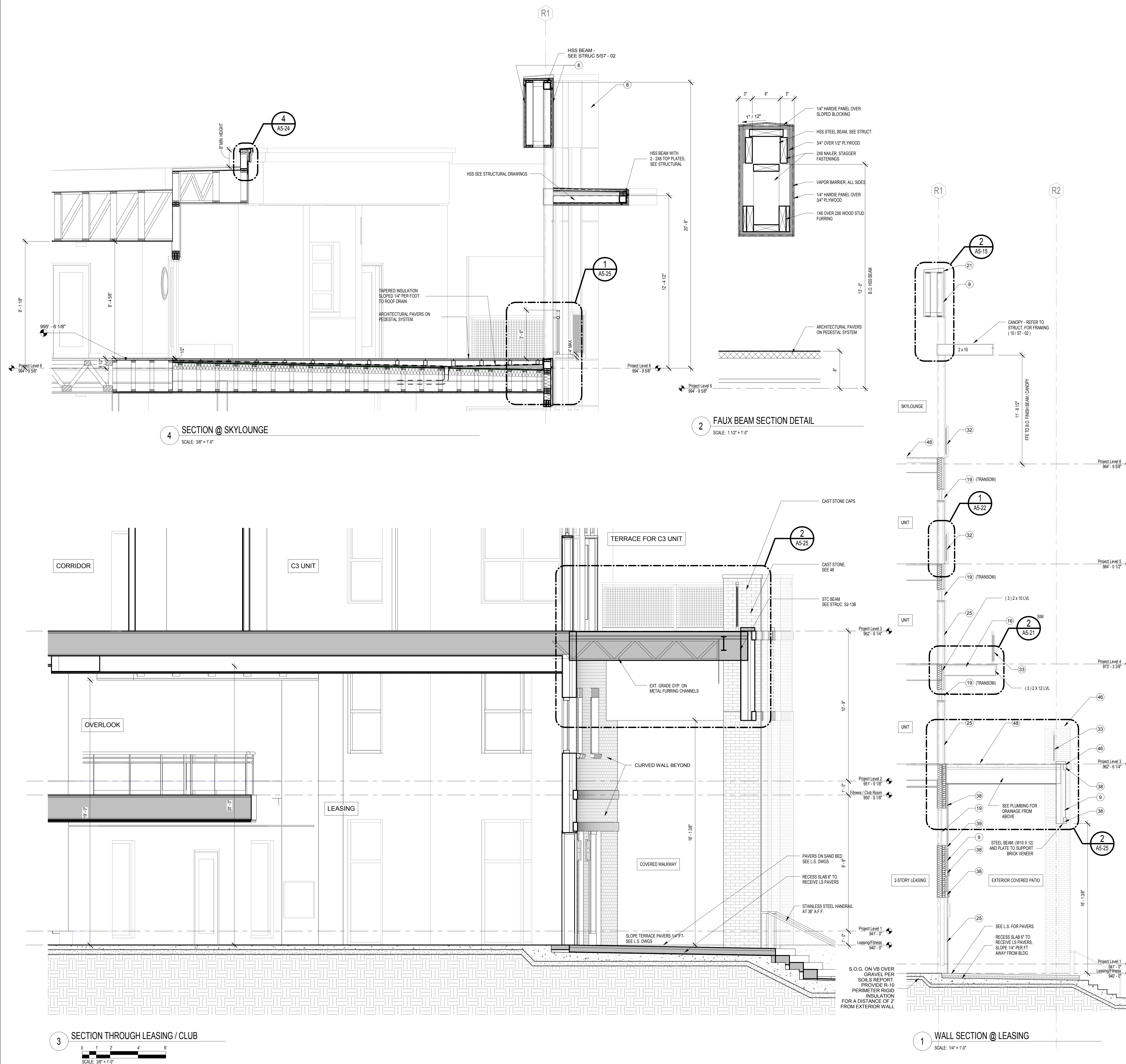


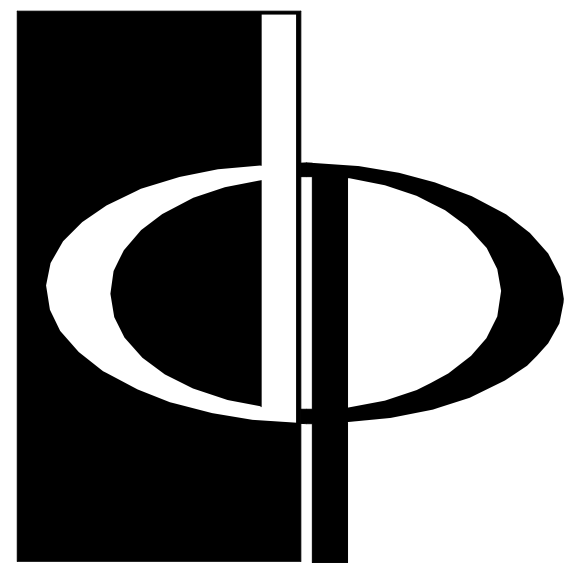
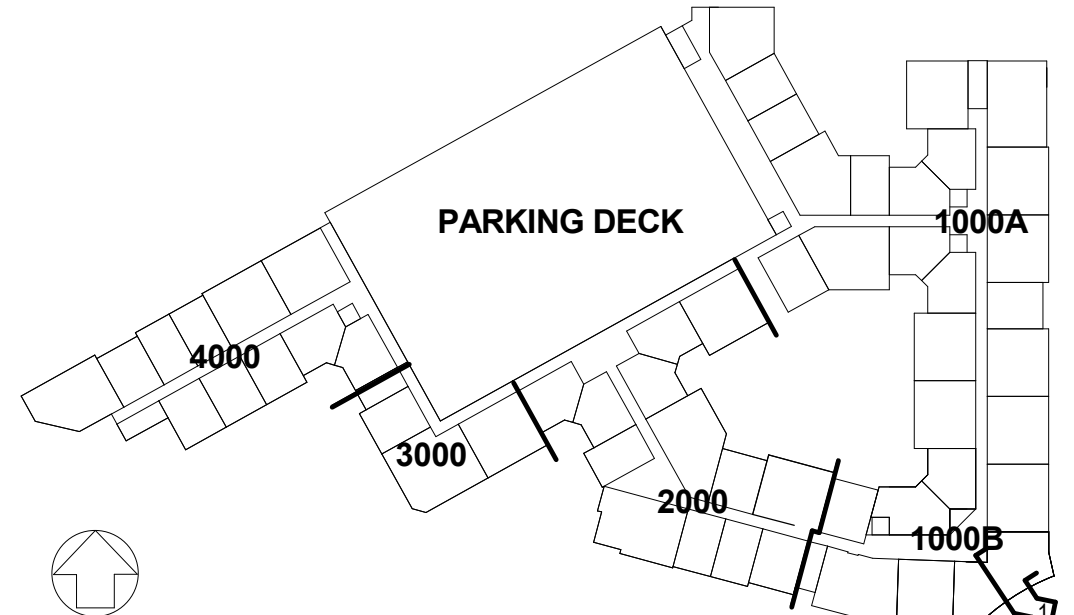
C:\Data File\Revit\2016\1483101 Circle 75 IL R16-C_painMk.rvt 10/4/2017 8:04:29 PM



WALL SECTION NOTES

1. FINISH GRADE, SLOPE AWAY FROM BLDG 1/8" PER FT FOR 4 FT. HORIZONTAL MIN. SEE CIVIL AND L.S. DWGS FOR MORE DETAIL. ALSO SEE CD-11 FOR AVG. GRADE PLANE.
2. EXPANSION JOINT BOND BREAKER, 1/2" TYPICAL, 1" AT SELECT LOCATIONS, 2" EMSEAL EXPANSION JOINT @ PARKING DECK.
3. TYPICAL CONC. S.O.G. - REINF. CONC. OVER CONT. VAPOR BARRIER (SEE STRUCTURAL FOR THICKNESS) ON 4" GRAVEL ON GRADE (COMPACTED AND TERMITE-TREATED) ON RIGID INSULATION @ PERIMETER OF BUILDING ENVELOPE.
4. CONCRETE VAPOR BARRIER - (2) LAYERS 6MIL POLY. MEMBRANE OVERLAP & TAPE JOINTS 12" MIN. SEAL VERTICAL PENETRATIONS PRIOR TO PLACEMENT OF CONCRETE.
5. TYPICAL WALL BASE PLATE ASSEMBLY (WHERE ATOP FOUNDATIONS): P.T. OR F.R.T. WOOD SILL PLATE (TYPE & SIZE PER STRUCTURAL) WITH CONT. SEAL, GASKET AND CONT. BEAD OF SEALANT, BOTTOM SIDE. ANCHOR PER STRUCTURAL SPECIFICATIONS FOR VARIOUS SHEAR WALL TYPES, TYP.
6. TYPICAL THRU-WALL FLASHING AT BASE OF MASONRY VENEER, WEEPS AT 24" O.C. HORIZ. OVER FLASHING. MORTAR NET CONTINUOUS OVER FLASHING. NO VYNER ANCHORS WITHIN 12" VERT. OF FLASHING. GROUT FILL SOLID CONTINUOUS BELOW FLASHING.
7. WOOD FRAMED EXTERIOR WALL ASSEMBLY PER LOCATION AS FOLLOWS:
A. CONSTRUCTION TYPE IIIA (BLDGS 1000, 2000, 3000 & 4000) LOAD BEARING CONDITIONS - 2 HOUR, UL1371 ASSEMBLY FIRE RETARDANT TREATED WOOD REQUIRED.
B. CONSTRUCTION TYPE IIIA (BLDGS 1000, 2000, 3000 & 4000) NON-LOAD BEARING CONDITIONS - NON-RATED ASSEMBLY (FIRE RETARDANT TREATED WOOD REQUIRED).
8. 4MM METAL PANELS IN METALLIC FINISH WITH REVEAL SYSTEM, COLOR TBD.
9. TYPICAL BRICK VENEER
MODULAR SIZE BRICK WITH GALVANIZED ADJUSTABLE MASONRY ANCHORS AT 16" O.C. VERTICAL AND HORIZONTAL, OVER AIR SPACE AND CONTINUOUS 60 MIL. FLEXIBLE MEMBRANE THROUGH WALL FLASHING AND CELL VENTS WITH PLASTIC WEEP TUBES @ 24" O.C. WITH ROPE WICKS. LAP AIR AND MOISTURE BARRIER OVER FLASHING & TAPE. GROUT FILL CAVITY BELOW LOWEST LEVEL OF FLASHING.
10. FIBER CEMENT PANEL WITH REVEAL SYSTEM OVER AIR/ MOISTURE BARRIER (EXTERIOR SIDE).
11. TYPICAL TENANT SEPARATION WALL ASSEMBLY (1-HOUR RATED, UL #U341, MIN. 50 S.T.C.)
(1) LAYER OF 5/8" TYPE "X" GYP. BOARD ON EACH SIDE OF DOUBLE-ROW 2X WOOD STUDS ON SEPARATE PLATES SET 1" APART. PROVIDE R-11 SOUND BATTS EACH SIDE. SEE STRUCTURAL FOR STUD SPACING.
12. TYPICAL STAIR SHAFT WALL ASSEMBLY (WOOD) (2-HOUR RATED) UL# U338, MIN. 50 S.T.C.
13. TYPICAL STAIR SHAFT WALL ASSEMBLY (CMU) (2-HOUR RATED)
14. TYPICAL UNIT FLOOR/CEILING ASSEMBLY (1-HOUR RATED, UL #521, SYSTEM #4, MIN. 50 S.T.C. & 100)
1" GYPCRETE ON ENKANSONIC SOUND CONTROL MAT, OVER FLOOR SHEATHING ON 16" PARALLEL CHORD TRUSS (SEE UNIT FRAMING PLAN). CEILING TO BE RESILIENT CHANNELS RUN PERPENDICULAR TO FLOOR TRUSS AND ONE (1) LAYER 5/8" TYPE "C" GYPSUM BOARD. PROVIDE R-11 SOUND BATT INSULATION AT CAVITY SPACE.
15. TYPICAL CORRIDOR FLOOR/CEILING ASSEMBLY (UL # L528, 1 HOUR)
1 1/2" LIGHTWEIGHT CONCRETE ON 158 FELT OVER 3/4" FLOOR SHEATHING (SEE FLOOR PLANS FOR CHANGE OF MATERIAL AT WEATHER EXPOSED CONDITIONS) ON PREMANUFACTURED WOOD TRUSSES (SEE STRUCTURAL DRAWINGS), OVER RESILIENT CHANNELS WITH 1 LAYER 5/8" FIRE-RATED, TYPE "C" WATER-RESISTANT EXTERIOR GYPSUM BOARD CEILING.
16. TYPICAL BALCONY FLOOR/CEILING ASSEMBLY (NON-RATED DUE TO SPRINKLER HEAD AT EACH BALCONY TYP.) MIN 1-1/2" LIGHTWEIGHT CONC. BROOM FINISH OVER 60 MIL. POLY. MBR. ON 3/4" PT & G PLYWOOD SUBFLOOR OVER PT WOOD FLOOR FRAMING (SEE STRUCTURAL UNIT FRAMING PLANS). CEILING TO BE PAINTED 5/8" TYPE "C" EXT. GYPSUM BOARD.
17. TYPICAL LOW-SLOPE ROOF/CEILING ASSEMBLY (UL# P522): THERMOPLASTIC POLYOLEFIN (T.P.O.) ROOFING SYSTEM OVER 3/4" T&G PLYWOOD ROOF DECK ON WOOD ROOF TRUSSES (TOP SIDE) (1 LAYER OF 5/8" TYPE "C" GYPSUM BOARD ON TRUSSES (BOTTOM SIDE). PROVIDE MIN. R-38 BATT INSULATION ABOVE / ON CEILING.
18. TYPICAL FIRE RESISTANT ROOF DECK ASSEMBLY: 5/8" TYPE "X" GYPSUM BOARD ON 2" X 2" LEDGERS MIN. 4'-0" HORIZONTAL FROM ADJACENT FIREWALL (EACH SIDE OF FIREWALL, WHERE APPLICABLE). OPENINGS IN THE ROOF SHALL NOT BE LOCATED WITHIN THIS FIRE RESISTANT ROOF DECK ASSEMBLY.
19. PREFINISHED SINGLE-HUNG (OR FIXED) ALUMINUM FRAME WINDOW ASSEMBLY W/INSULATED GLASS. REFER TO A4 SERIES ELEVATION DRAWINGS & A4 SERIES WINDOW SCHEDULE.
20. TYPICAL 42" HIGH METAL GUARDRAIL ASSEMBLY, PAINTED OR STAINLESS STEEL.
21. METAL COPING, PREFINISHED (PAINTED), OVER WATER AND ICE SHIELD ON WOOD NAILER. SECURE FRONT AND REAR CONT. WITH HOLD-DOWN CLIPS.
22. WEEP HOLES @ 24" O.C. OVER THRU-WALL FLASHING, ON STEEL LINTEL (@ WINDOWS AND DOORS ONLY). MORTAR NET CONTINUOUS OVER FLASHING.
23. FILTER FABRIC AROUND 18" X 18" GRAVEL SURROUNDING 6" DIAMETER PERFORATED PIPE.
24. FOUNDATION WATER PROOFING SYSTEM.
25. SCHEDULED DOOR (SEE FLOOR PLANS & DOOR SCHEDULES).
26. FIBER-CEMENT BOARD/ TRIM. SEE DETAILS.
27. STEEL BEAM, SEE STRUCTURAL.
28. STEEL LINTEL ANGLE (PAINTED IF EXPOSED).
29. THERMALLY-BROKEN METAL STOREFRONT ASSEMBLY, PREFINISHED (PAINTED).
29. PRE-FINISHED ALUMINUM LOUVER W/ METAL CLOSURE PANEL TO MATCH FINISH.
29. SIMILAR TYPICAL (NON-RATED) BALCONY FLOOR/CEILING ASSEMBLY.
30. CANTILEVER BEAM BEYOND (SHOWN HIDDEN). SEE STRUCTURAL.
31. BATT INSULATION (R-19)
32. 42" HIGH JULIET BALCONY RAIL SYSTEM.
33. SCUPPER WITH COLLECTION BOX AND ALUMINUM DOWNSPOUT.
35. WALL MOUNTED HANDRAIL.
36. PREFINISHED ALUMINUM DRIP EDGE FLASHING. COLOR TO MATCH FASCIA.
37. PREFINISHED ALUMINUM CAP FLASHING. COLOR TO MATCH ADJACENT WALL.
38. BRICK SOLDIER COURSE
39. BRICK ROWLOCK SILL, SLOPE TOP MIN 15% PER BRICK INDUSTRY STANDARDS, SOLID BRICK AT ENDS
40. 5/4 x 10 HARDIE TRIM FASCIA
41. 5/4 x 4 HARDIE TRIM FASCIA
42. PAINTED STEEL TIE ROD - SEE STRUCTURAL
43. PRECAST CONCRETE WALL OR SPANDREL PANEL.
44. MIN. 3" CONCRETE TOPPING ON PRECAST DOUBLE-TEES.
45. T.O.P. = TOP OF PARAPET
46. CAST STONE CAP
47. INSULATION BAFFLE WITH BLOCKING AS REQUIRED. MAINTAIN 2" MINIMUM CLEAR FOR ATTIC VENTILATION, IF REQUIRED.
48. PEDESTAL PAVER SYSTEM ON PROTECTION BOARD, WATERPROOF MEMBRANE & TAPERED INSULATION ON EXTERIOR GRADE PLYWOOD ON WOOD TRUSSES
49. FLASHING THROUGH THE WALL.

KEYPLAN



**THE PRESTON
PARTNERSHIP, LLC**
A MULTI-DISCIPLINARY DESIGN FIRM

SOUTH TERRACES
115 PERIMETER CENTER PLACE, SUITE 950
ATLANTA, GEORGIA 30346
TELEPHONE: 770 396 7248
FAX: 770 396 2945

WWW.THEPRESTONPARTNERSHIP.COM
CONSULTANT

SEAL



PROJECT

**RESERVE AT THE
BALLPARK, PHASE II,
AKA REVEL AT THE
BALLPARK**
2885 CRESCENT PKWY
SMYRNA, GA 30080

FOR



**ATLANTIC REALTY
PARTNERS**

3438 PEACHTREE ROAD
SUITE 1425
ATLANTA, GA 30326

ISSUES & REVISIONS
GMP 04/03/2017
PERMIT SET 05/22/2017
3. BUILDING PERMIT 07/25/2017

DATE 05/22/2017

JOB NUMBER 1493101

DRAWN BY NB

CHECKED BY CW

SHEET TITLE
EXTERIOR WALL SECTIONS

SHEET NUMBER

A5-15

COMMENTS
BUILDING PERMIT RE-SUBMISSION

30X42 © 2017 The Preston Partnership, LLC