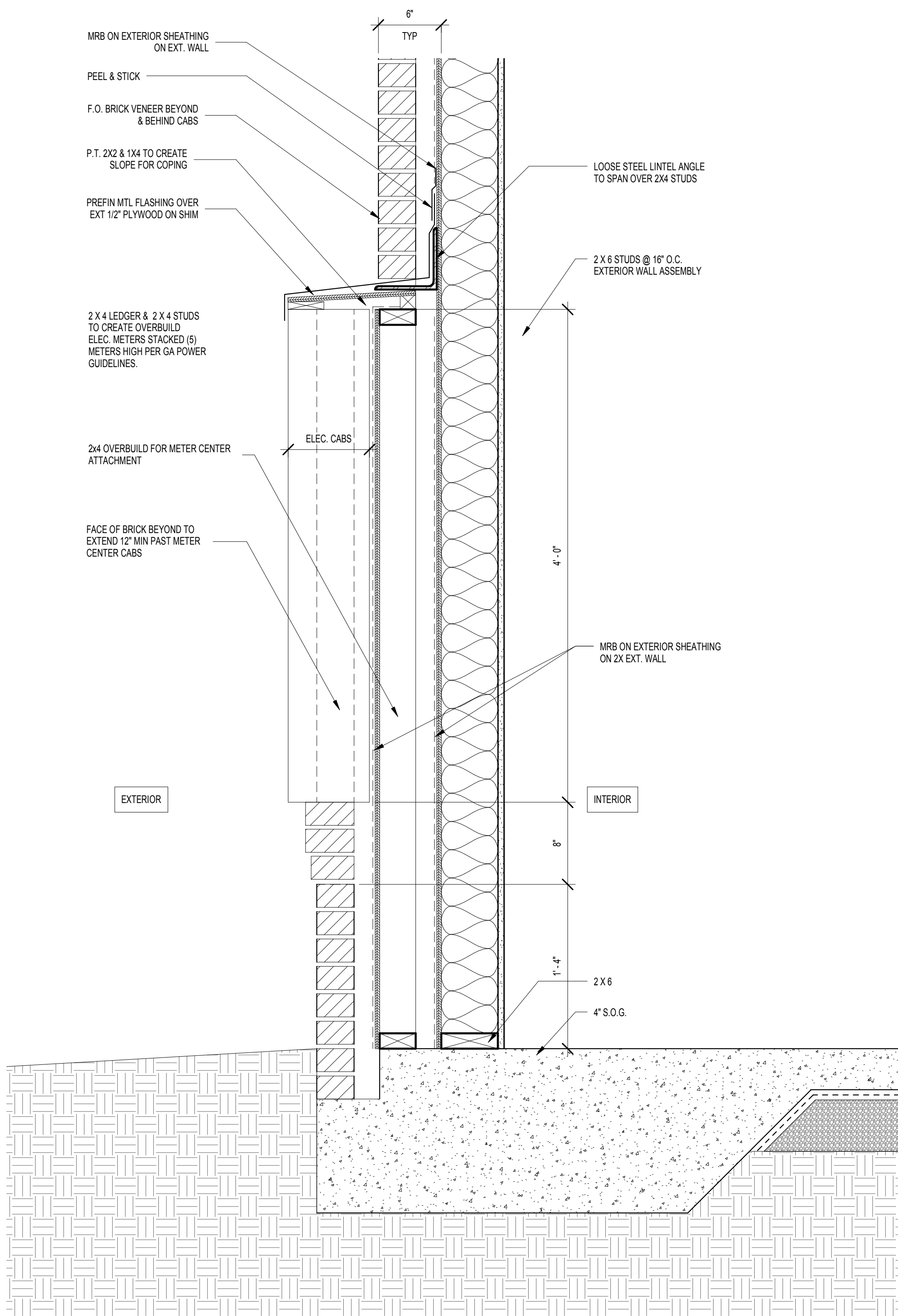
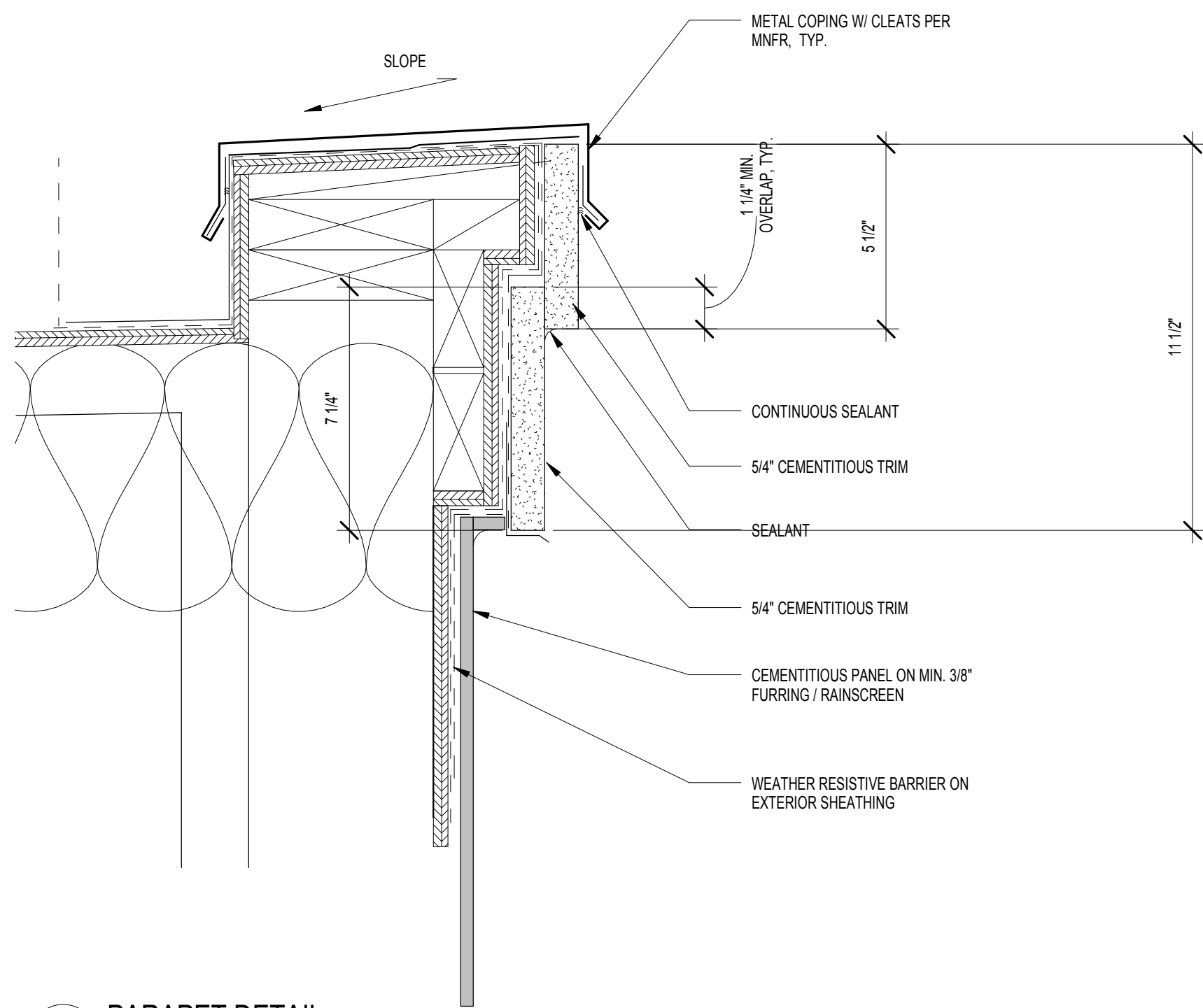


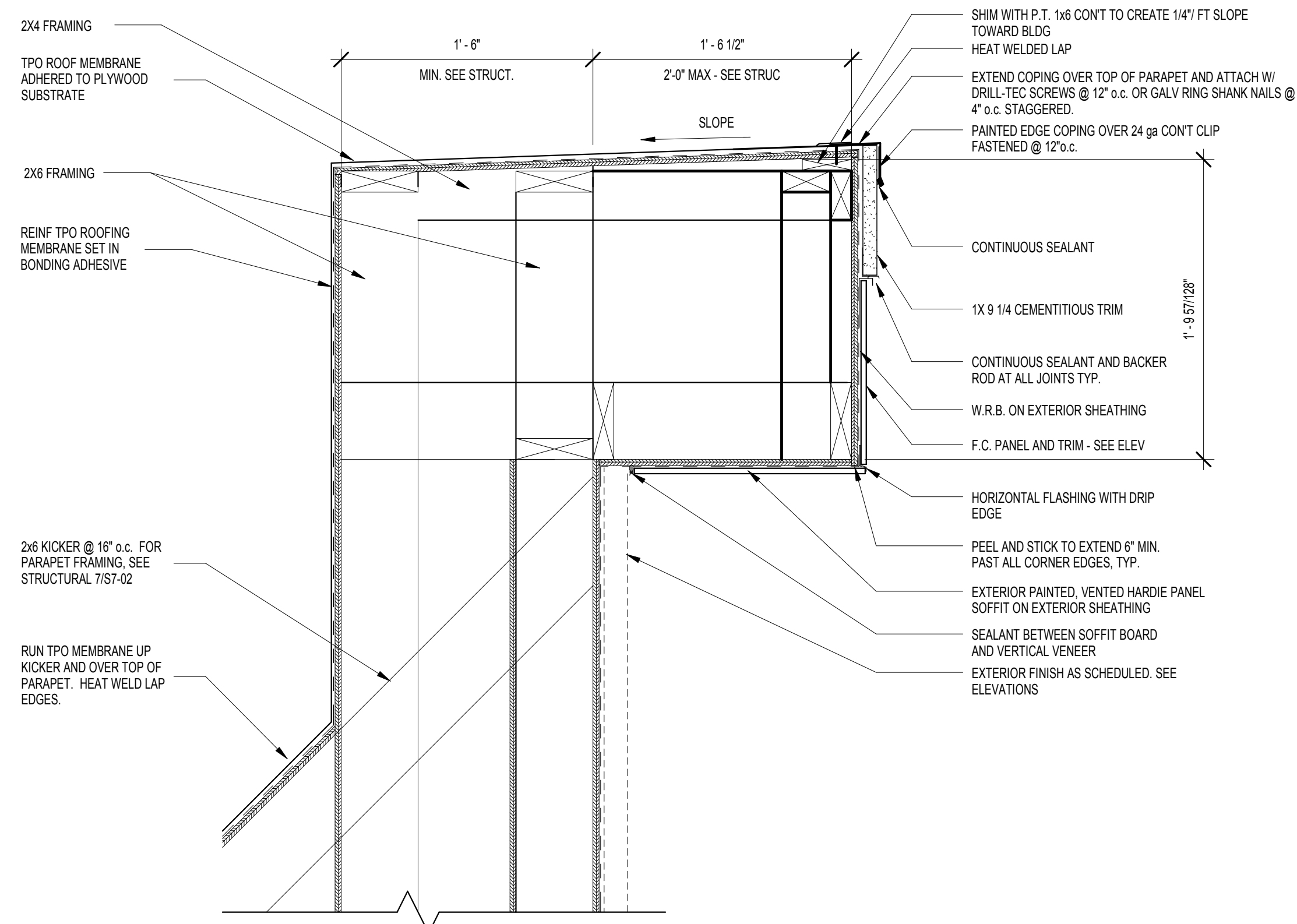
C:\Data File\Revit 2016\1493101 Circle 75 IL R16-C.dwg\mk1.txt 10/4/2017 8:04:46 PM



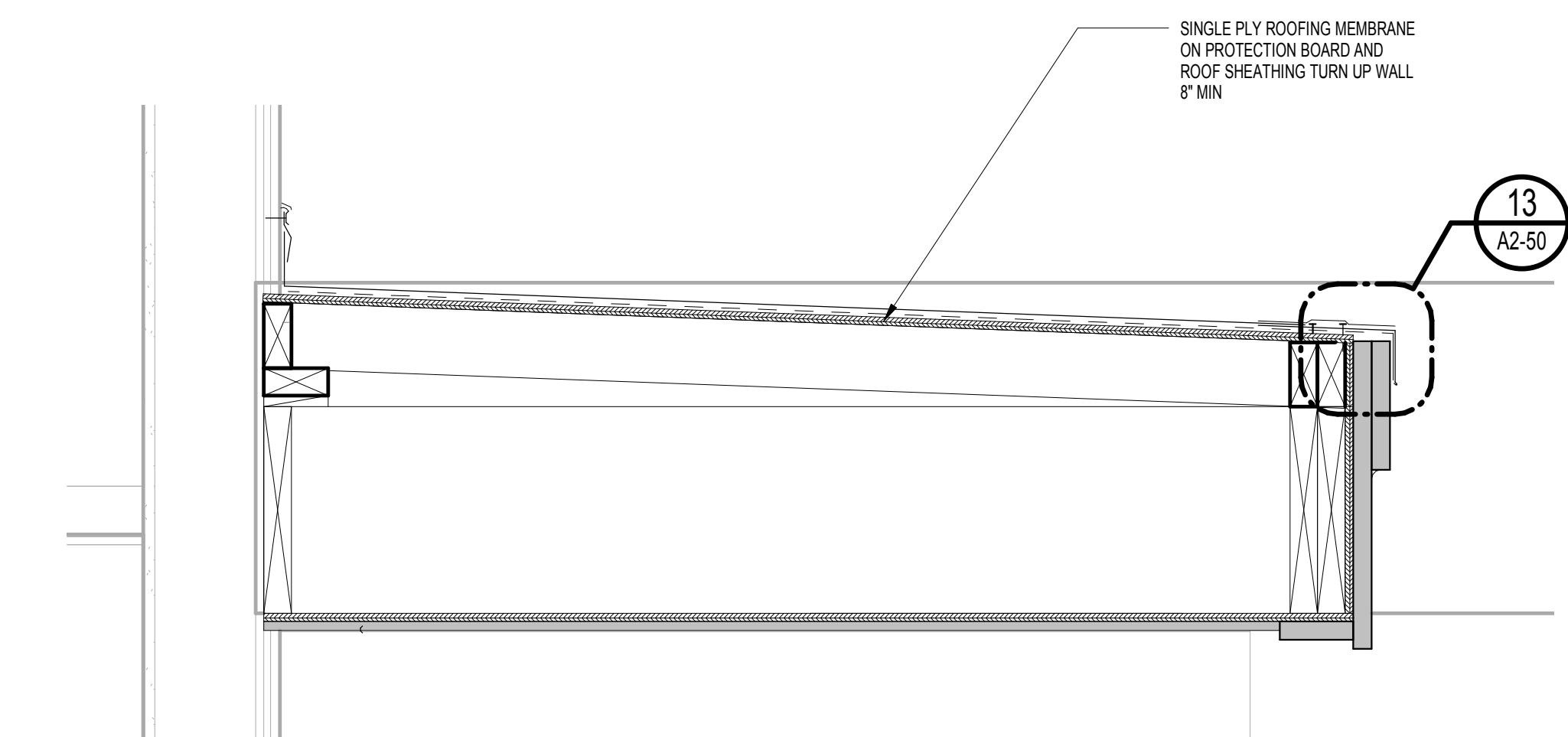
6 METER CENTER SECTION @ BRICK
SCALE: 1 1/2" = 1'-0"



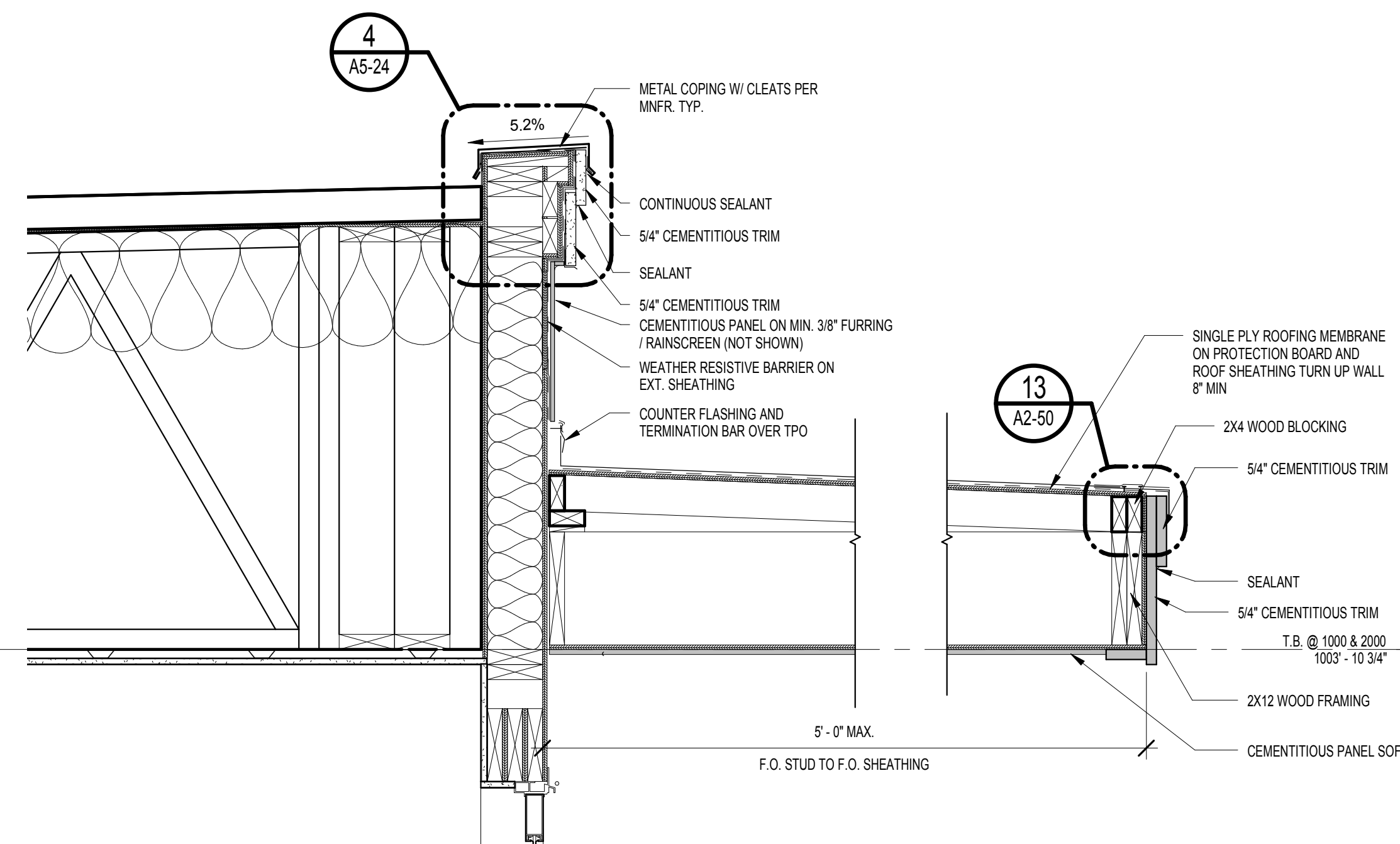
4 PARAPET DETAIL
SCALE: 3" = 1'-0"



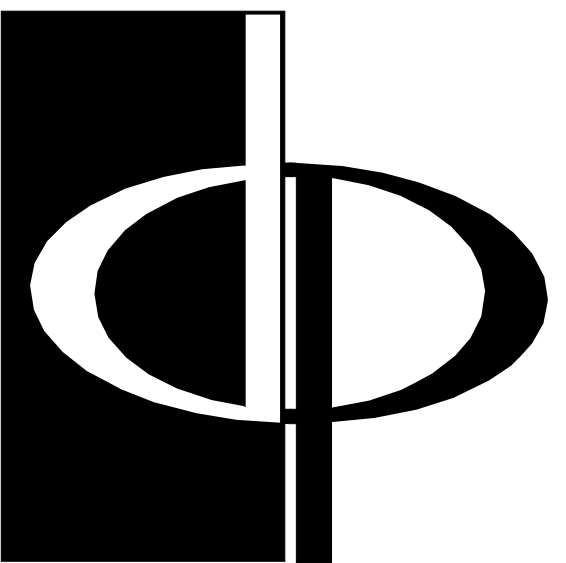
3 ENLARGED SECTION DETAIL @ BOX PARAPET
SCALE: 1 1/2" = 1'-0"



2 ENLARGED SECTION DETAIL @ BALCONY EYEBROW
SCALE: 1 1/2" = 1'-0"



1 ENLARGED SECTION @ BALCONY EYEBROW & PARAPET
SCALE: 1" = 1'-0"



**THE PRESTON
PARTNERSHIP, LLC**
A MULTI-DISCIPLINARY DESIGN FIRM

SOUTH TERRACES
115 PERIMETER CENTER PLACE, SUITE 950
ATLANTA, GEORGIA 30346
TELEPHONE: 770 396 7248
FAX: 770 396 2945

WWW.THEPRESTONPARTNERSHIP.COM
CONSULTANT

SEAL



PROJECT

**RESERVE AT THE
BALLPARK, PHASE II,
AKA REVEL AT THE
BALLPARK**
2885 CRESCENT PKWY
SMYRNA, GA 30080

FOR



**ATLANTIC REALTY
PARTNERS**

3438 PEACHTREE ROAD
SUITE 1425
ATLANTA, GA 30326

ISSUES & REVISIONS

ISSUES & REVISIONS	DATE
CONCEPTUAL DESIGN	08/21/2015
SCHEMATIC DESIGN	09/28/2015
CM/CD DESIGN DEVELOPMENT	10/15/2015
GMP	04/03/2017
PERMIT SET	05/22/2017
3. BUILDING PERMIT	07/25/2017

DATE

JOB NUMBER

DRAWN BY

CHECKED BY

SHEET TITLE

ENLARGED SECTION DETAILS

SHEET NUMBER

COMMENTS

BUILDING PERMIT RE-SUBMISSION

30X42

© 2017 The Preston Partnership, LLC

A5-24