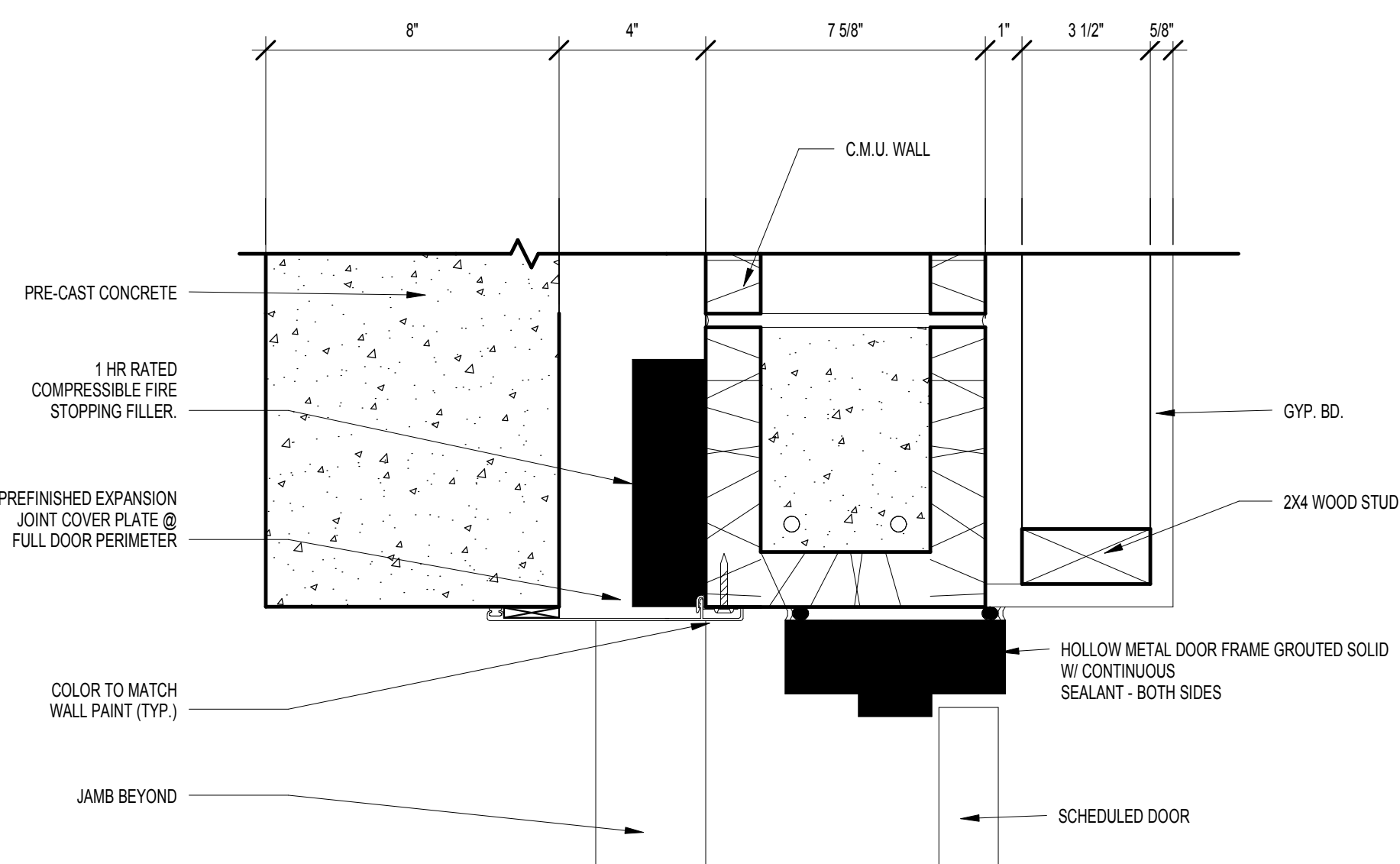
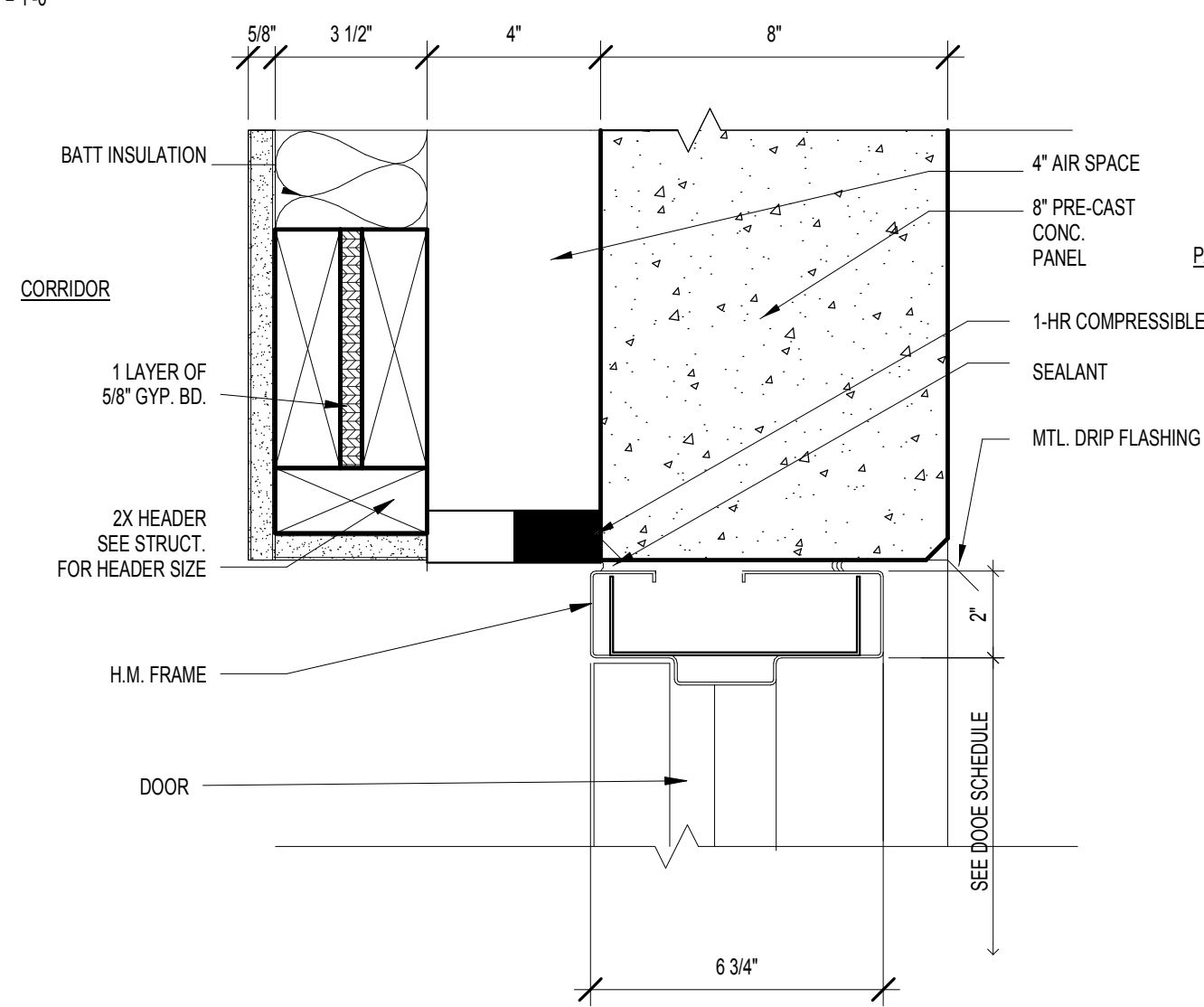


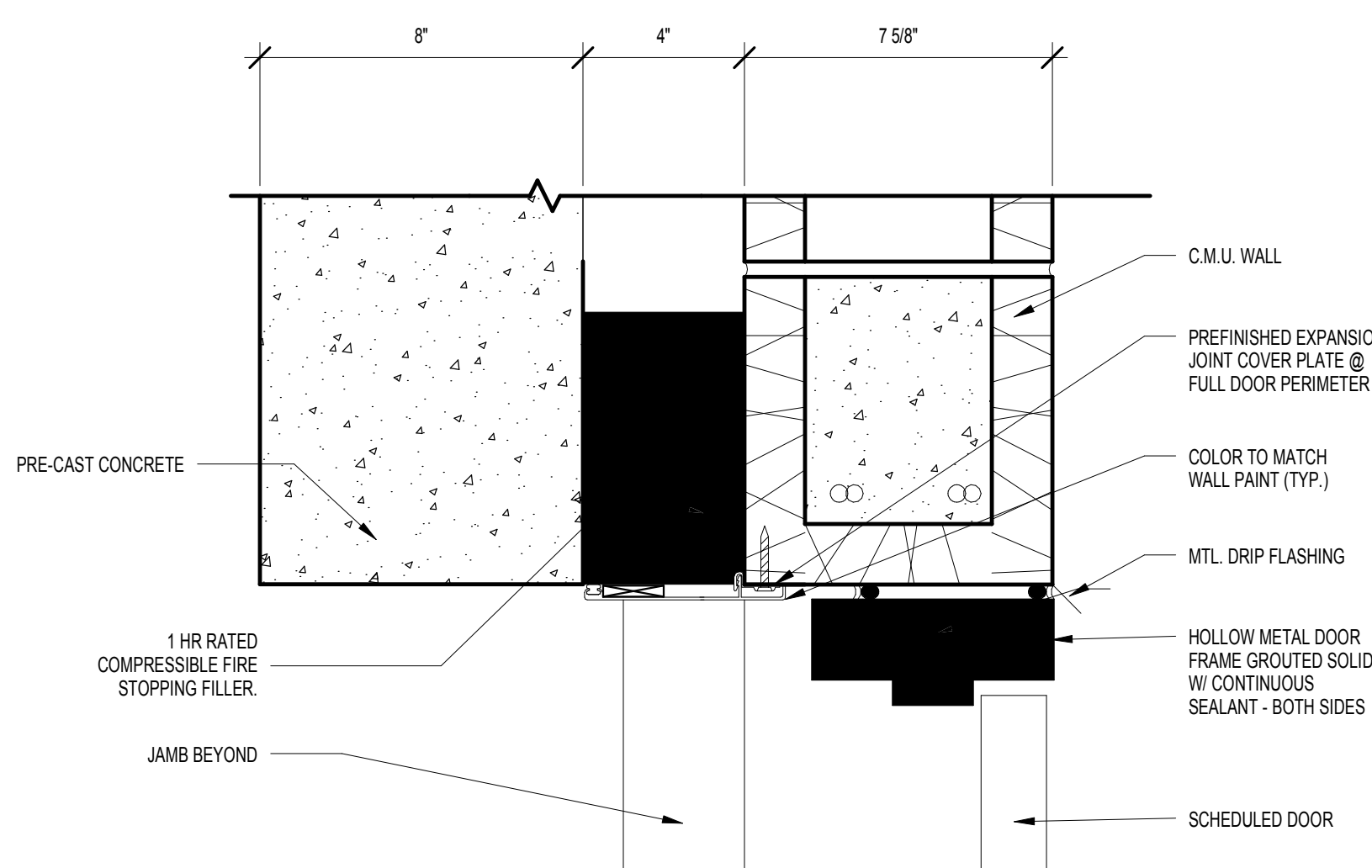
13 EXPANSION JOINT AXON  
SCALE: 3" = 1'-0"



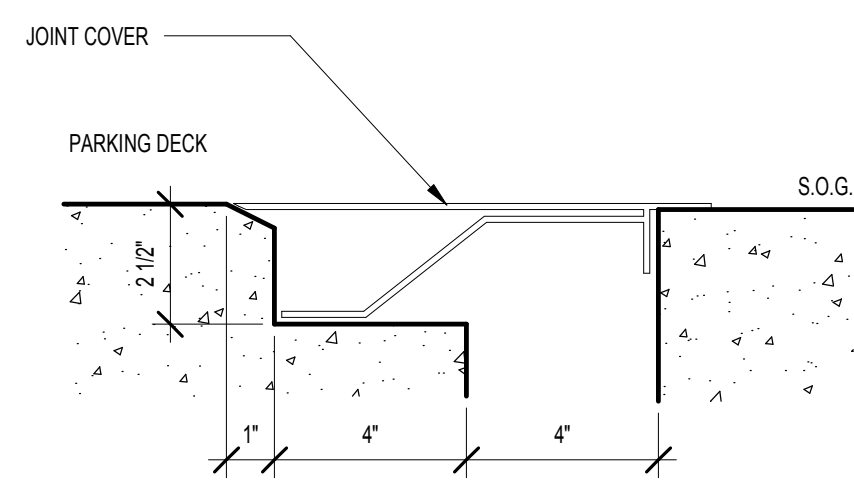
12 HEAD DETAIL (JAMB SIM.) 3  
SCALE: 3" = 1'-0"



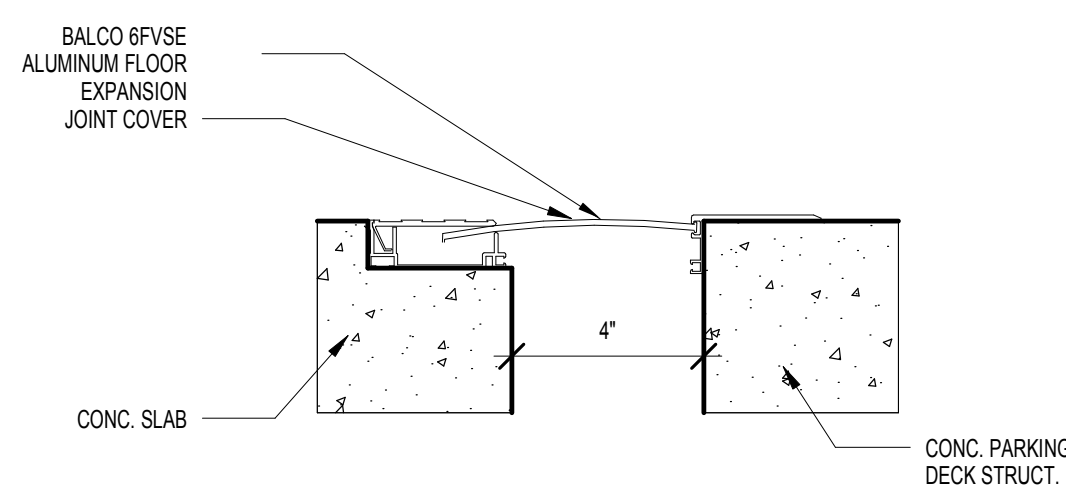
11 HEAD DETAIL (JAMB SIM.) 2  
SCALE: 3" = 1'-0"



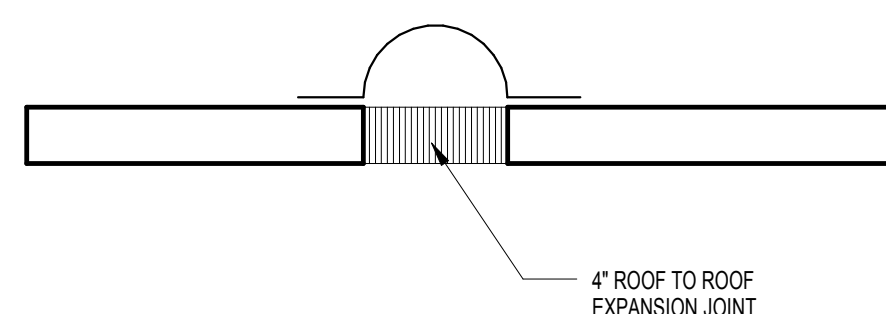
10 HEAD DETAIL (JAMB SIM.)  
SCALE: 3" = 1'-0"



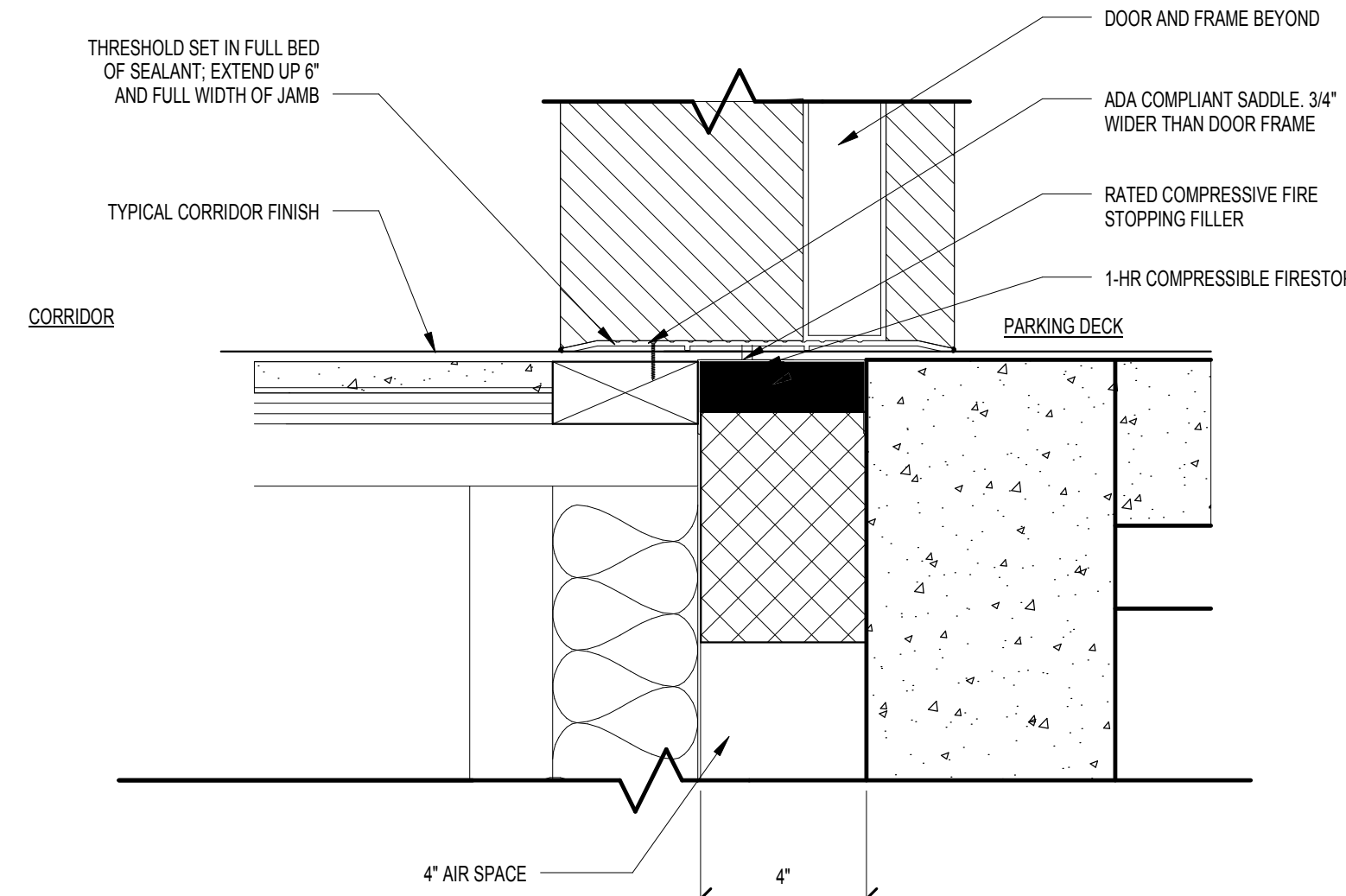
9 FLOOR EXPANSION JOINTS 2  
SCALE: 3" = 1'-0"



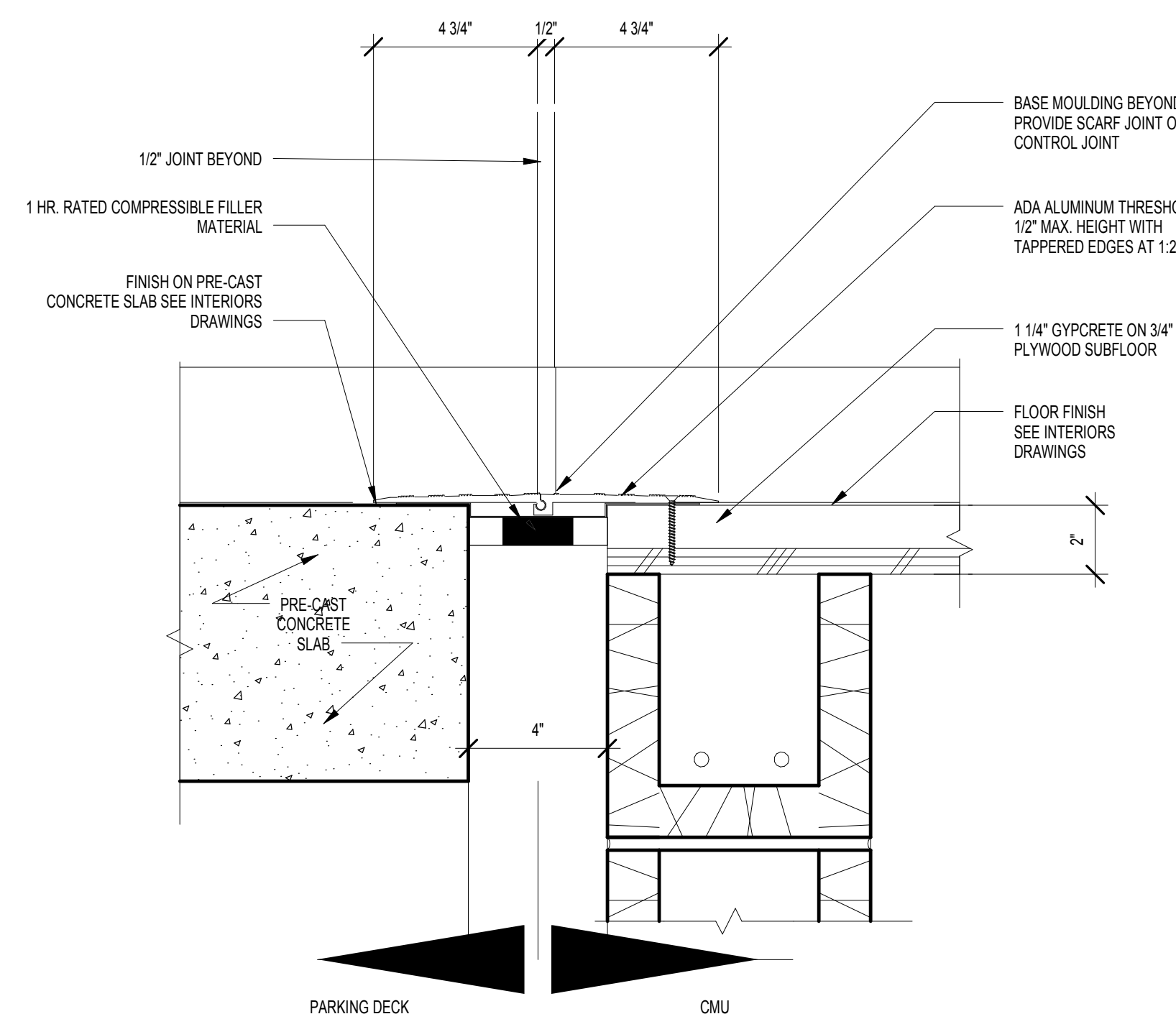
8 FLOOR EXPANSION JOINTS  
SCALE: 3" = 1'-0"



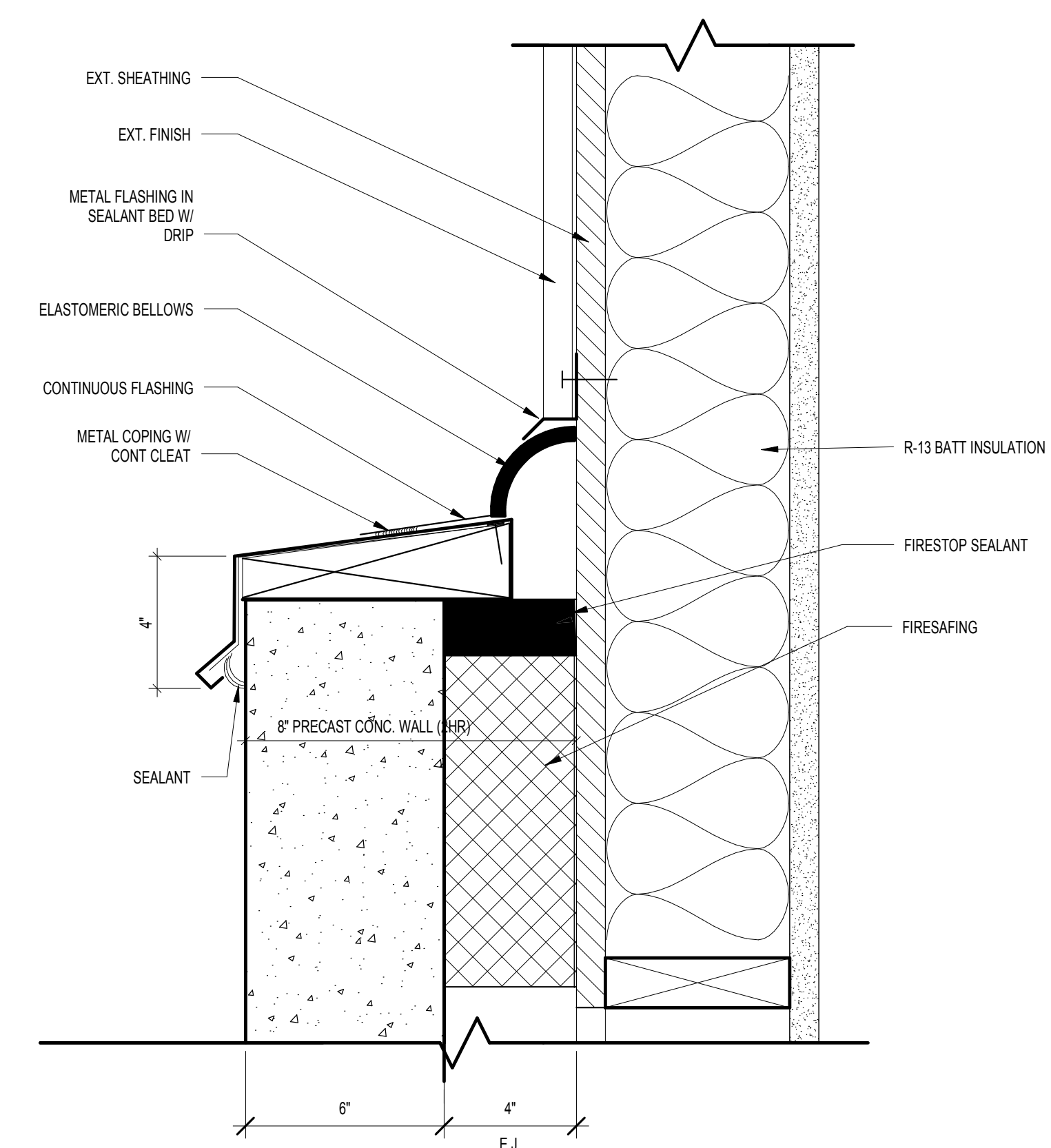
7 ROOF EXPANSION JOINT  
SCALE: 3" = 1'-0"



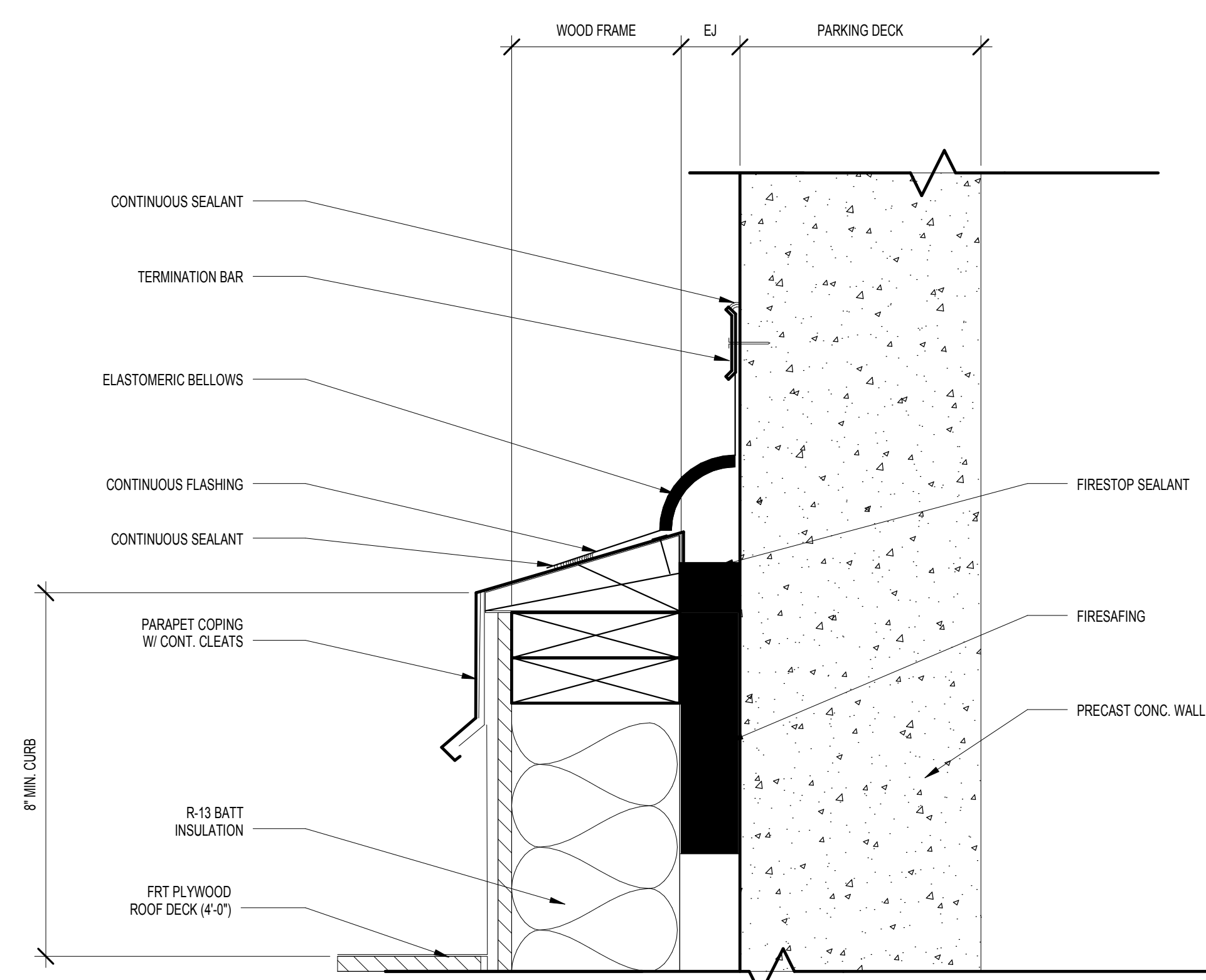
6 DOOR THRESHOLD - EXTERIOR DOOR  
SCALE: 3" = 1'-0"



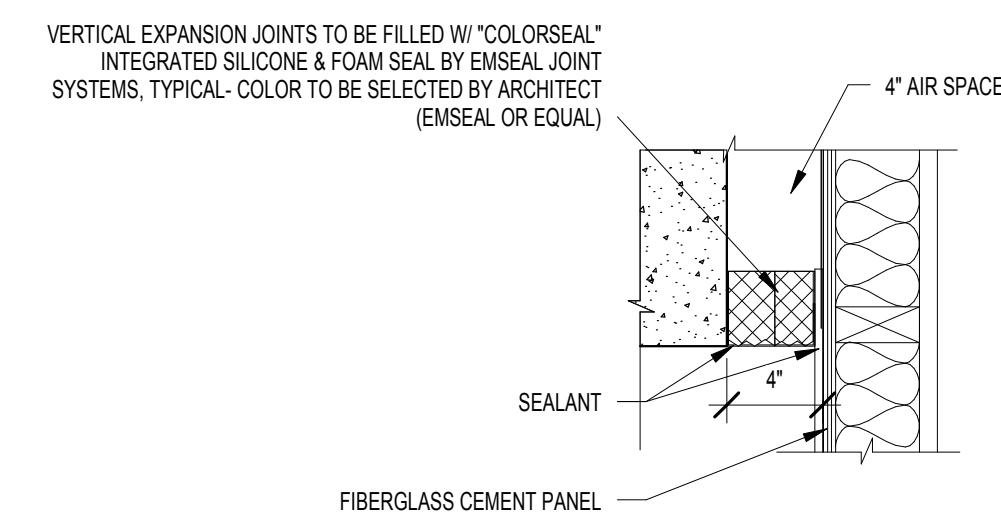
5 DOOR THRESHOLD @ PARKING DECK  
SCALE: 3" = 1'-0"



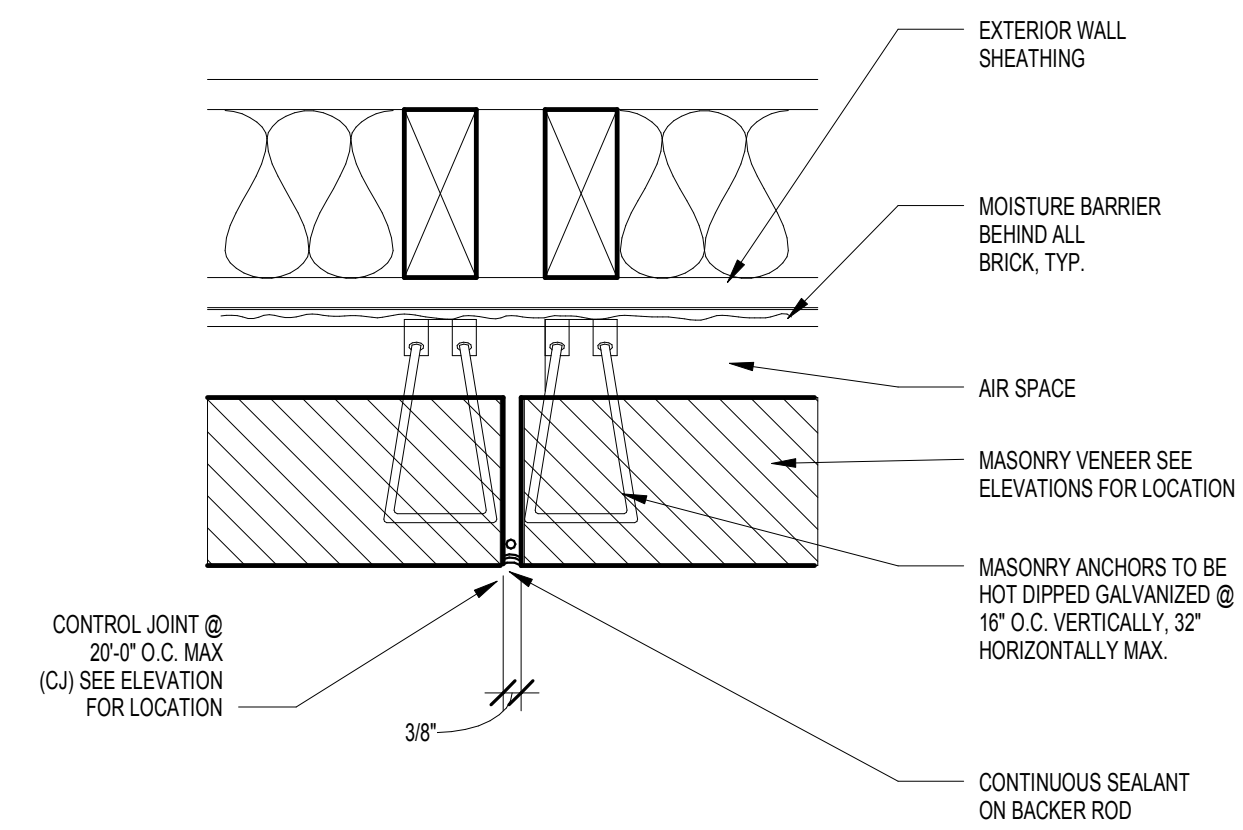
4 HORIZONTAL EXPANSION JOINT 2  
SCALE: 3" = 1'-0"



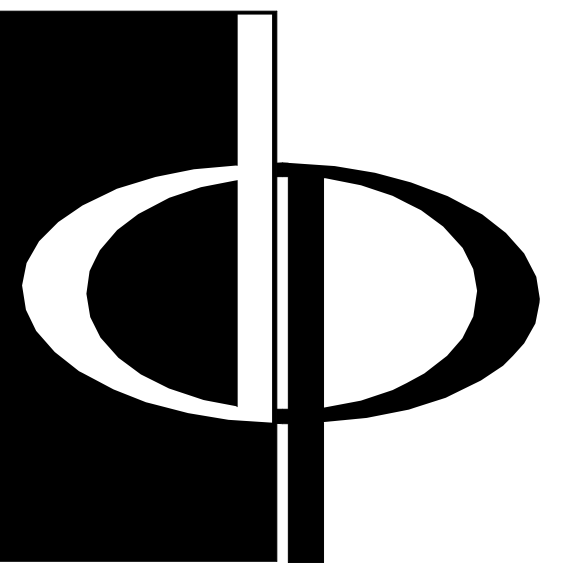
3 HORIZONTAL EXPANSION JOINT  
SCALE: 3" = 1'-0"



2 EXPANSION JOINT @ BLDG. EXTERIOR  
SCALE: 1 1/2" = 1'-0"



1 CONTROL JOINT @ BRICK  
SCALE: 3" = 1'-0"



**THE PRESTON PARTNERSHIP, LLC**  
A MULTI-DISCIPLINARY DESIGN FIRM

SOUTH TERRACES  
115 PERIMETER CENTER PLACE, SUITE 950  
ATLANTA, GEORGIA 30346  
TELEPHONE: 770 396 7248  
FAX: 770 396 2945

WWW.THEPRESTONPARTNERSHIP.COM  
CONSULTANT



PROJECT  
**RESERVE AT THE BALLPARK, PHASE II, AKA REVEL AT THE BALLPARK**  
2885 CRESCENT PKWY  
SMYRNA, GA 30080

FOR



**ATLANTIC REALTY PARTNERS**

3438 PEACHTREE ROAD  
SUITE 1425  
ATLANTA, GA 30326

ISSUES & REVISIONS	DATE
CONCEPTUAL DESIGN	08/21/2015
SCHEMATIC DESIGN	09/28/2015
CM/CD DESIGN DEVELOPMENT	10/15/2015
GMP	04/03/2017
PERMIT SET	05/22/2017
3. BUILDING PERMIT	07/25/2017

DATE **05/22/2017**

JOB NUMBER **1493101**

DRAWN BY **MDB**

CHECKED BY **CW**

SHEET TITLE  
**EXPANSION JOINT DETAILS**

SHEET NUMBER

**A5-30**

COMMENTS  
BUILDING PERMIT RE-SUBMISSION

30X42 © 2017 The Preston Partnership, LLC