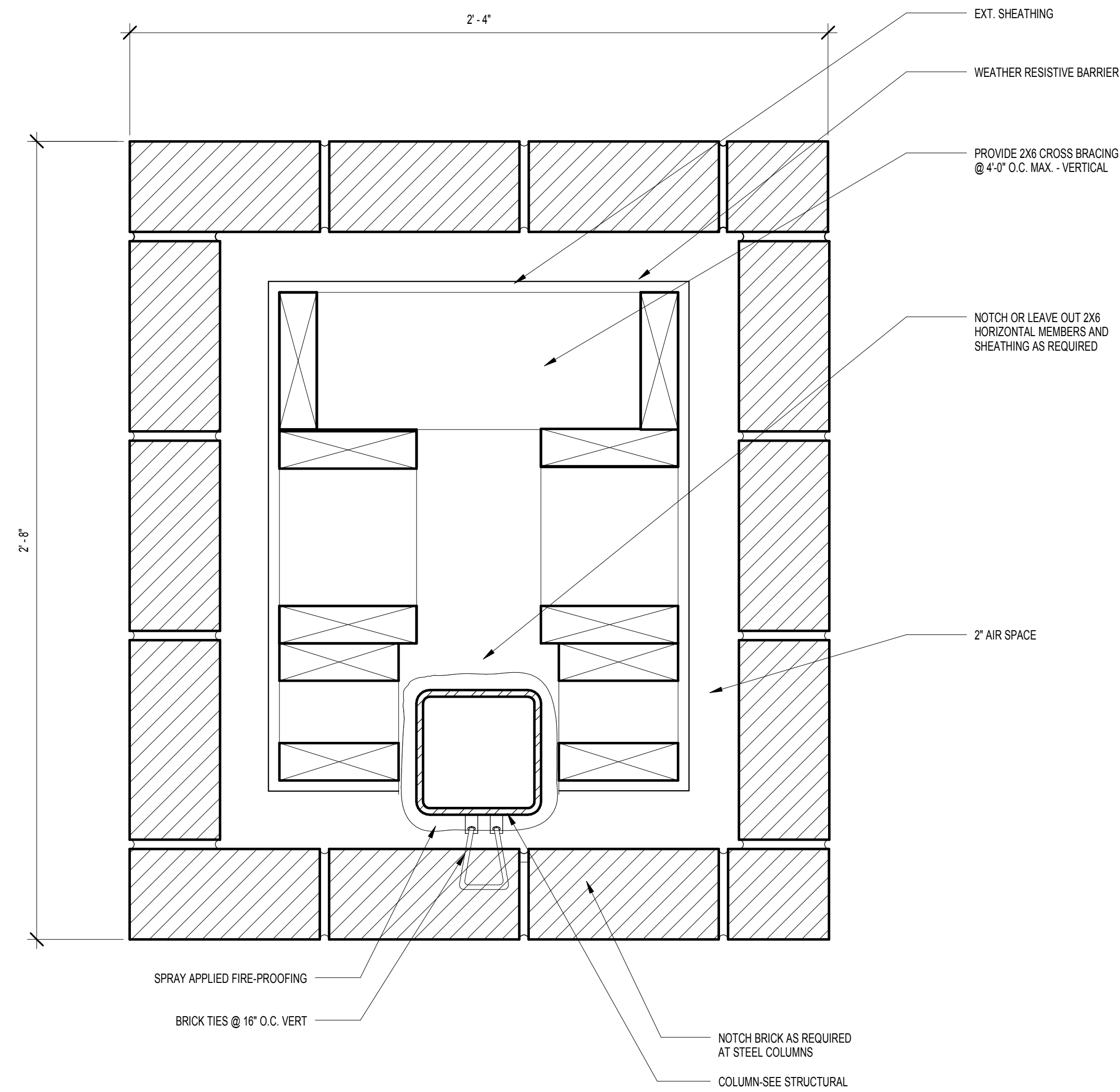
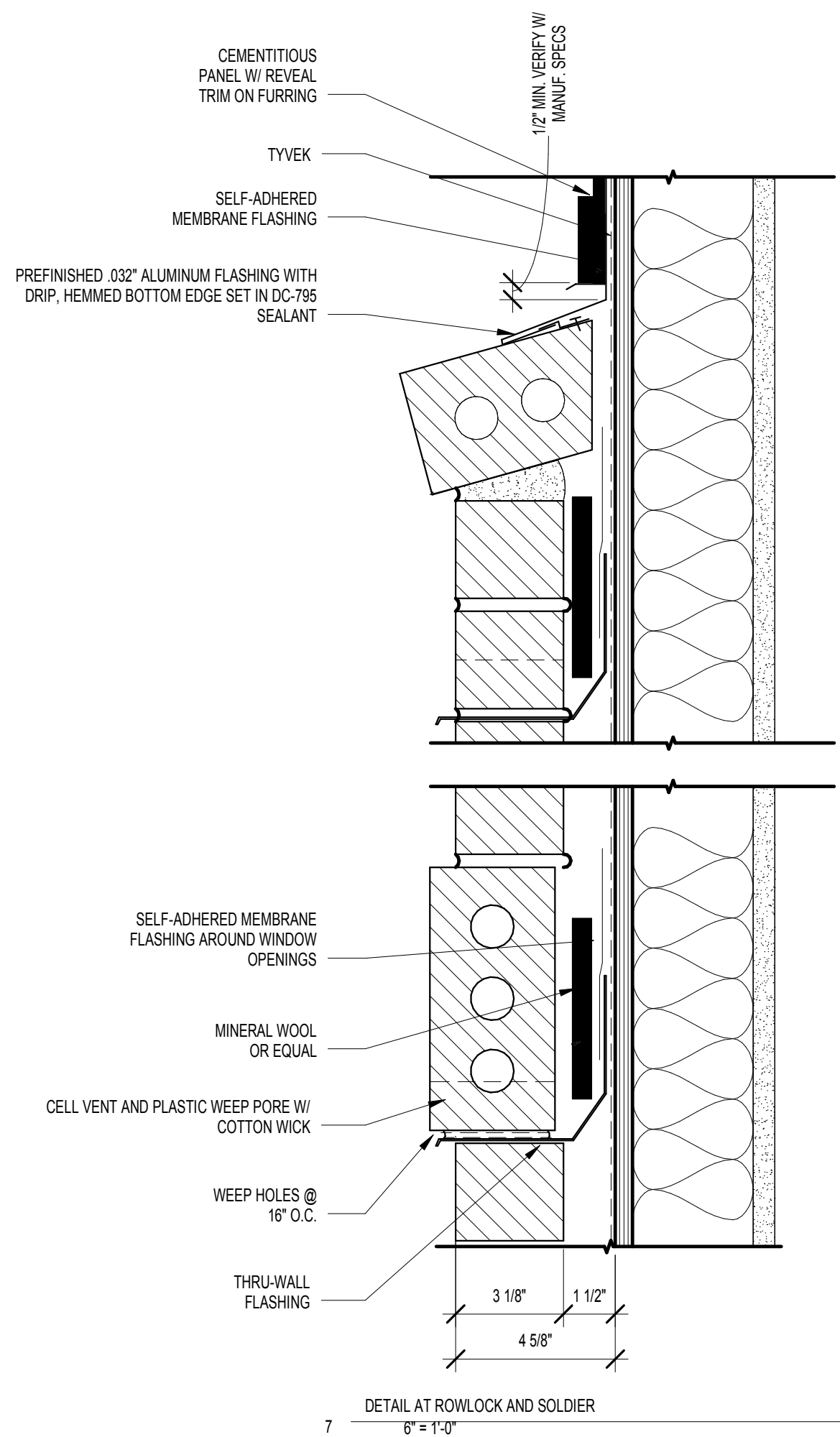


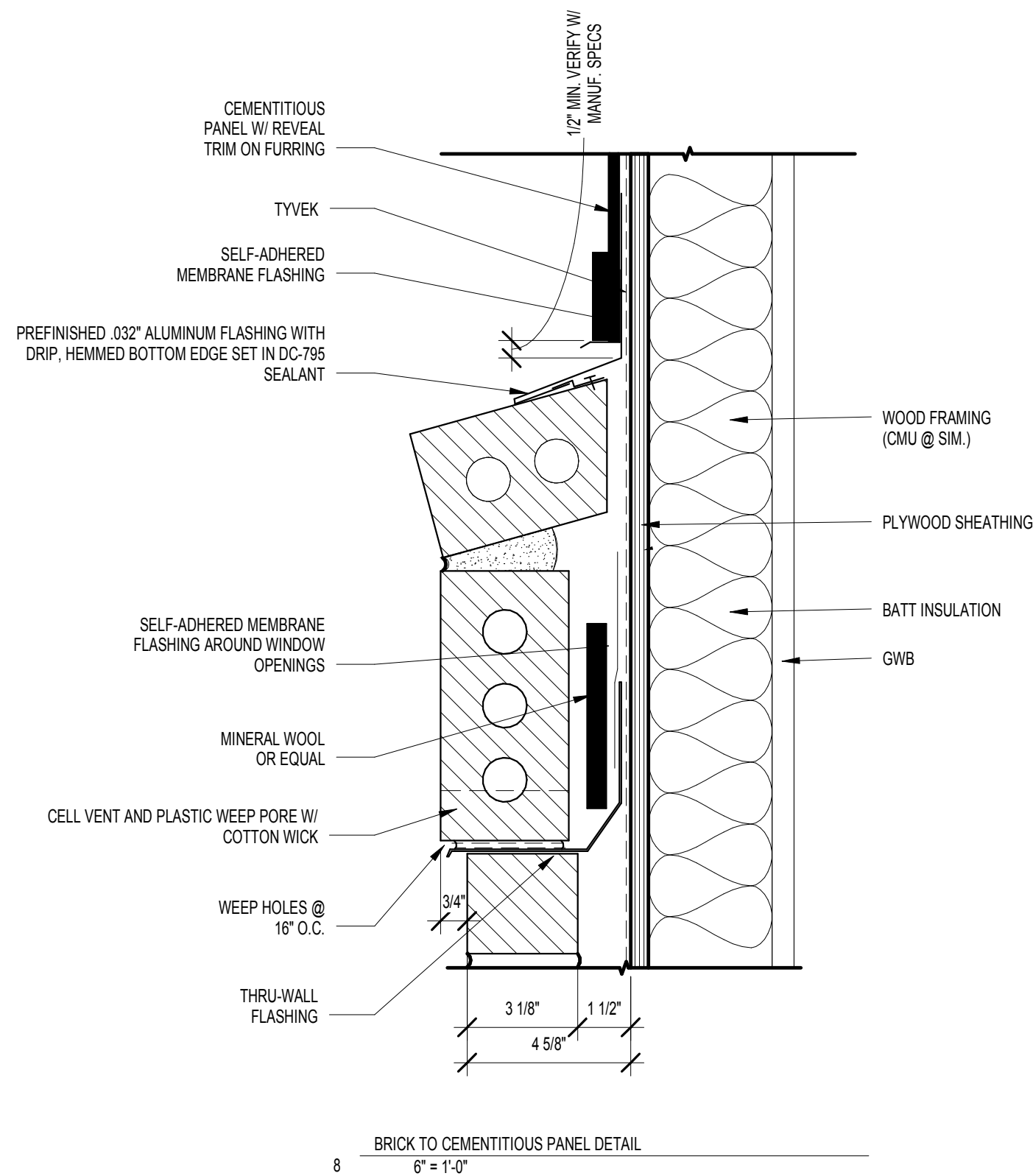
6 PLAN @ CURVED BRICK PILASTER
SCALE: 3" = 1'-0"



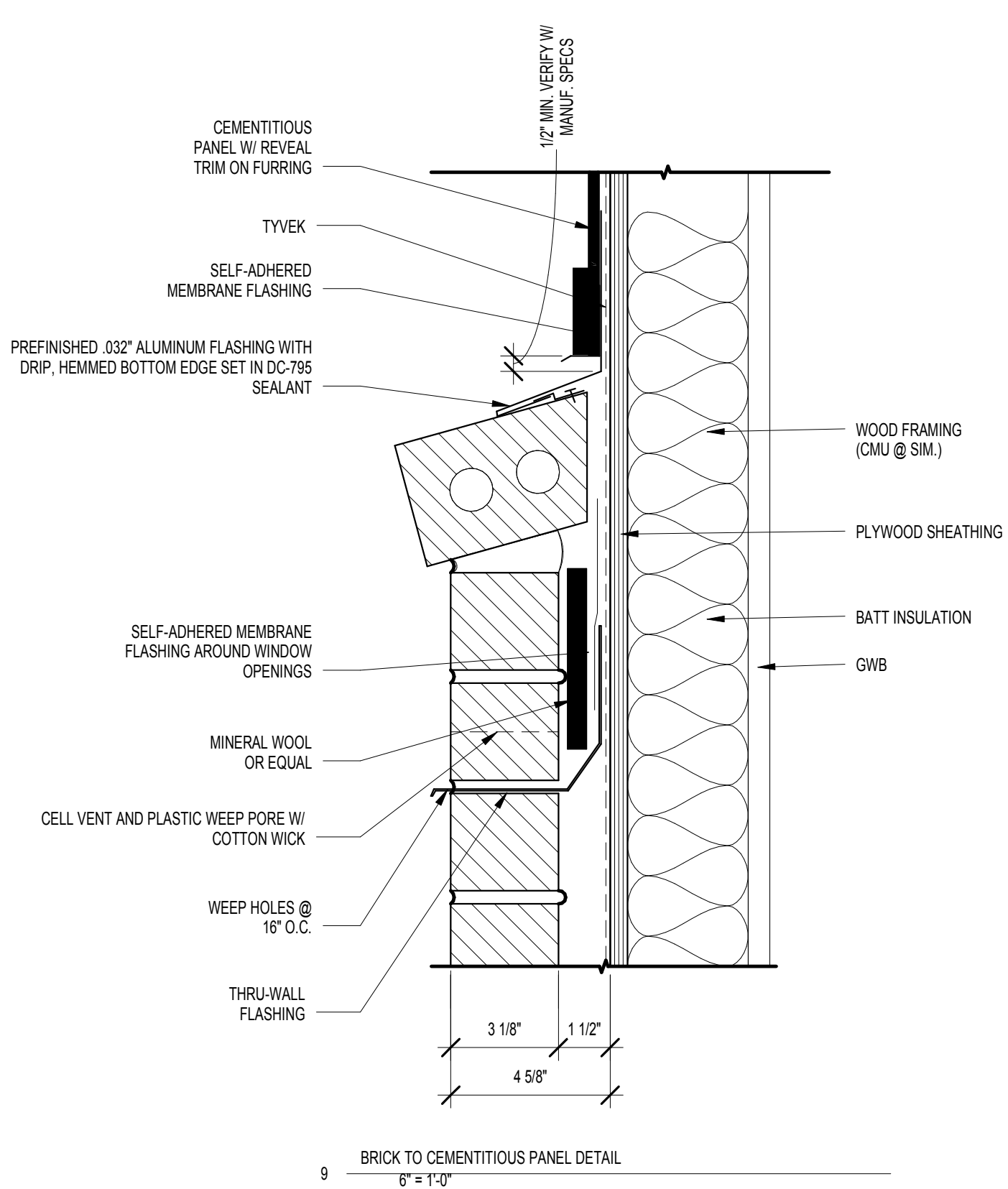
5 PLAN @ BRICK PILASTER
SCALE: 3" = 1'-0"



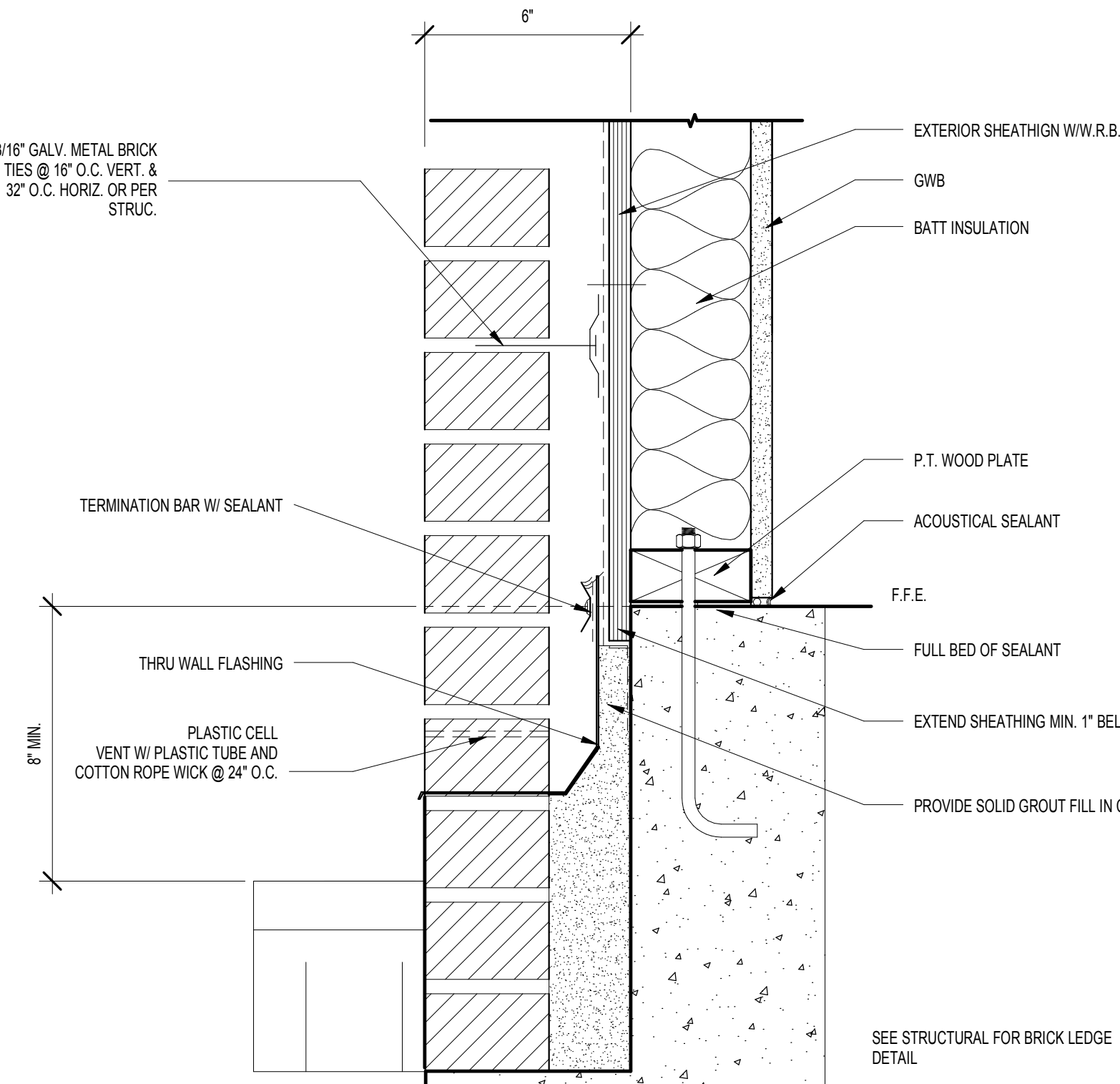
4 DETAIL AT ROWLOCK AND SOLDIER
SCALE: 3" = 1'-0"



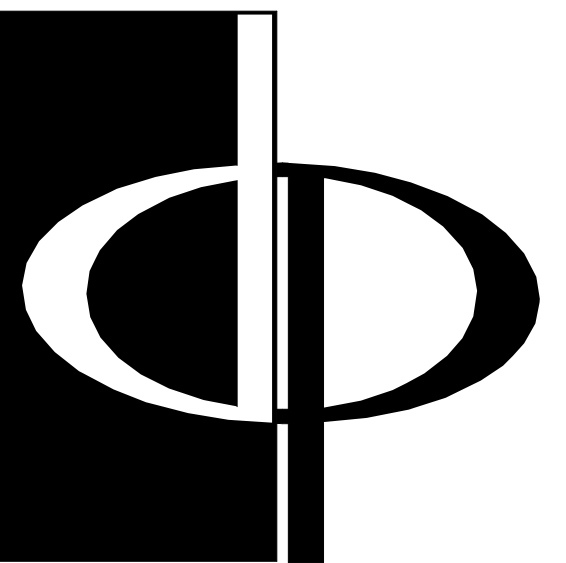
3 BRICK TO CEMENTITIOUS PANEL DETAIL A5-32
SCALE: 3" = 1'-0"



2 BRICK TO CEMENTITIOUS PANEL DETAIL
SCALE: 3" = 1'-0"



1 BRICK @ FOUNDATION
SCALE: 3" = 1'-0"



THE PRESTON PARTNERSHIP, LLC
A MULTI-DISCIPLINARY DESIGN FIRM

SOUTH TERRACES
115 PERIMETER CENTER PLACE, SUITE 950
ATLANTA, GEORGIA 30346
TELEPHONE: 770 396 7248
FAX: 770 396 2945

WWW.THEPRESTONPARTNERSHIP.COM
CONSULTANT

SEAL



PROJECT

RESERVE AT THE BALLPARK, PHASE II, AKA REVEL AT THE BALLPARK
2885 CRESCENT PKWY
SMYRNA, GA 30080

FOR



ATLANTIC REALTY PARTNERS

3438 PEACHTREE ROAD
SUITE 1425
ATLANTA, GA 30326

ISSUES & REVISIONS	DATE
CONCEPTUAL DESIGN	08/21/2015
SCHEMATIC DESIGN	09/28/2015
CMIP-DESIGN DEVELOPMENT	10/15/2015
GMP	04/03/2017
PERMIT SET	05/22/2017
3. BUILDING PERMIT	07/25/2017

DATE **05/22/2017**
JOB NUMBER **1493101**
DRAWN BY **Author**
CHECKED BY **Checker**
SHEET TITLE **BRICK DETAILS**

SHEET NUMBER

A5-32

COMMENTS
BUILDING PERMIT RE-SUBMISSION

30X42 © 2017 The Preston Partnership, LLC