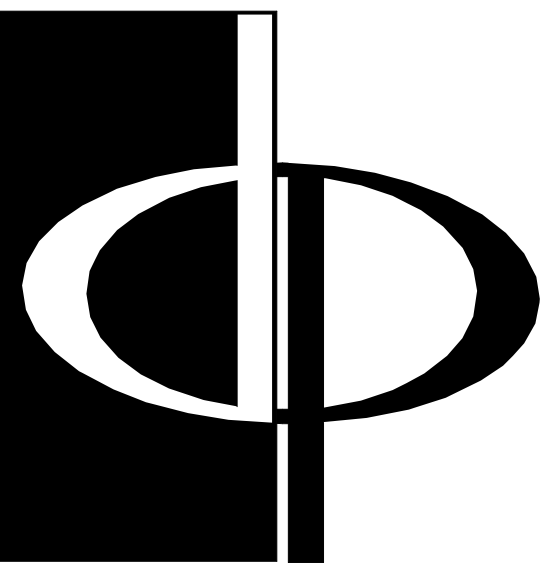
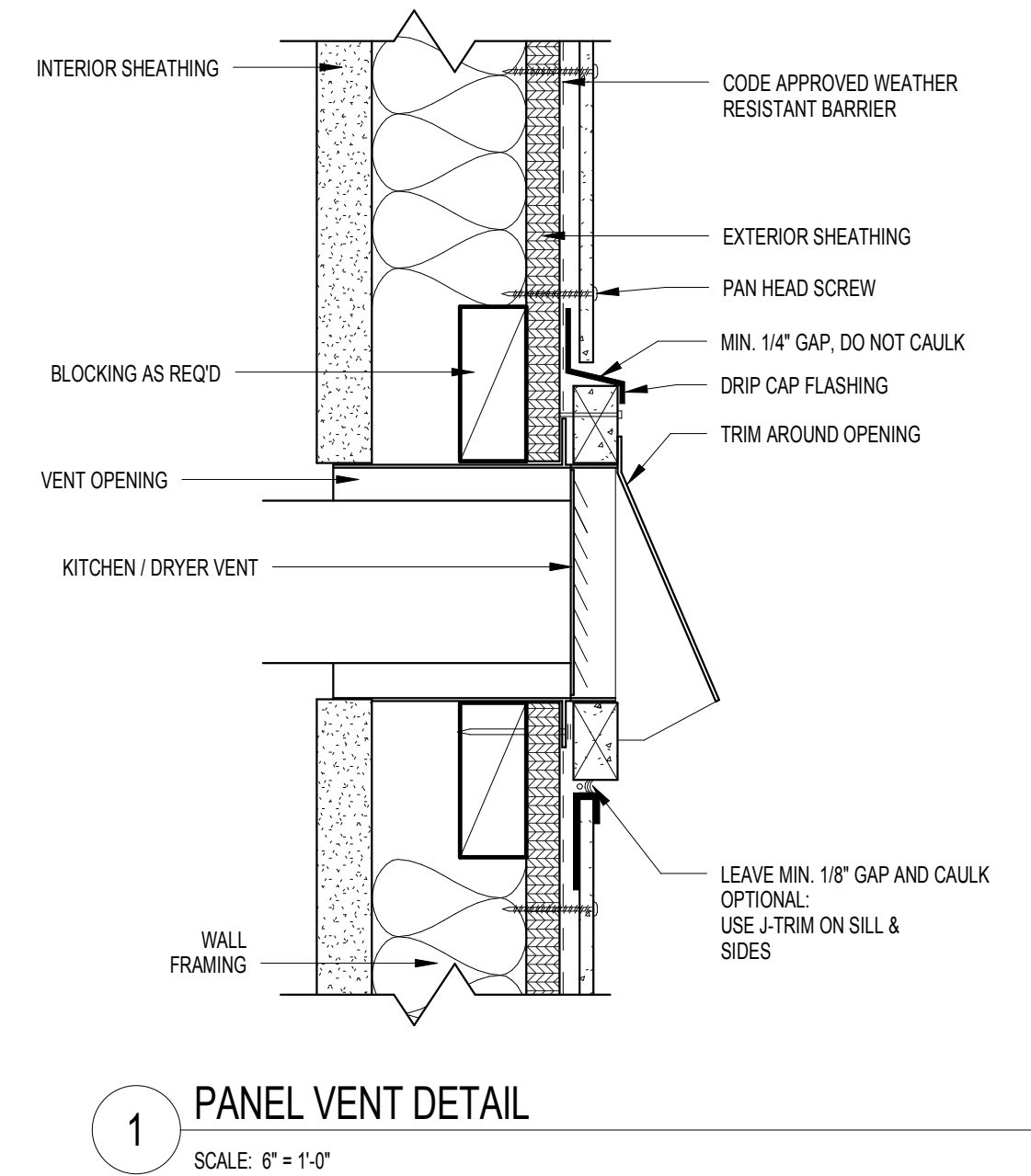
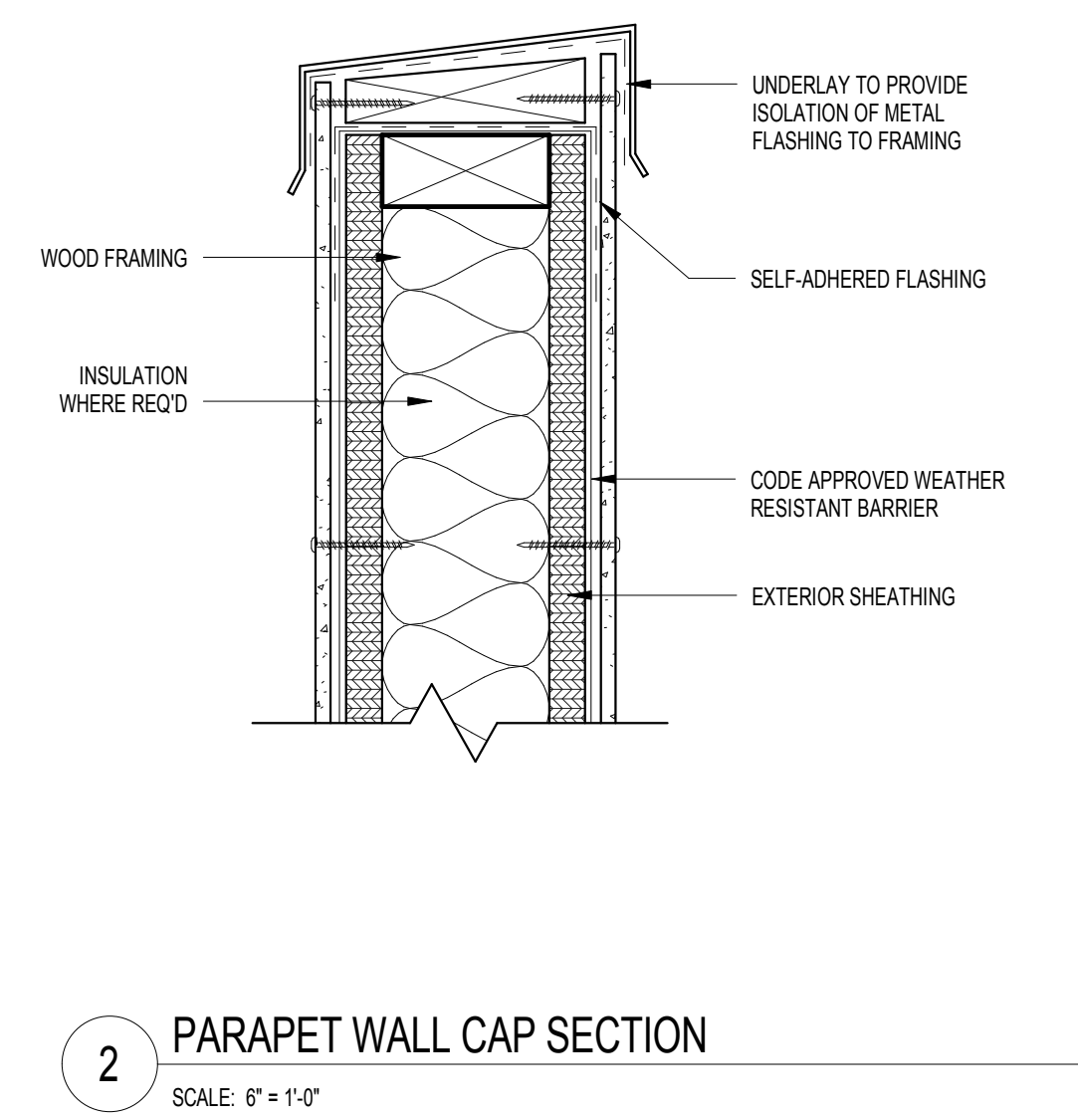
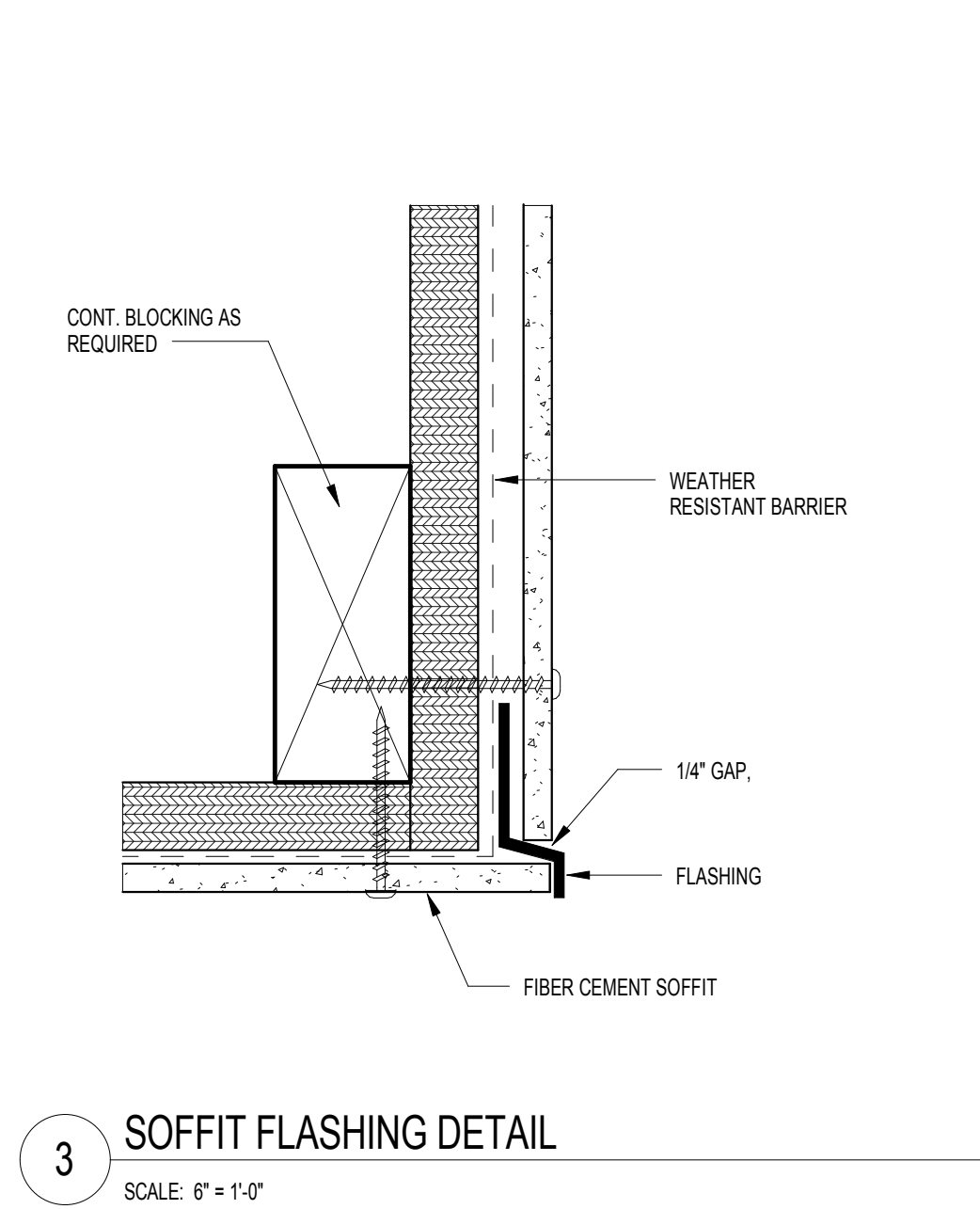
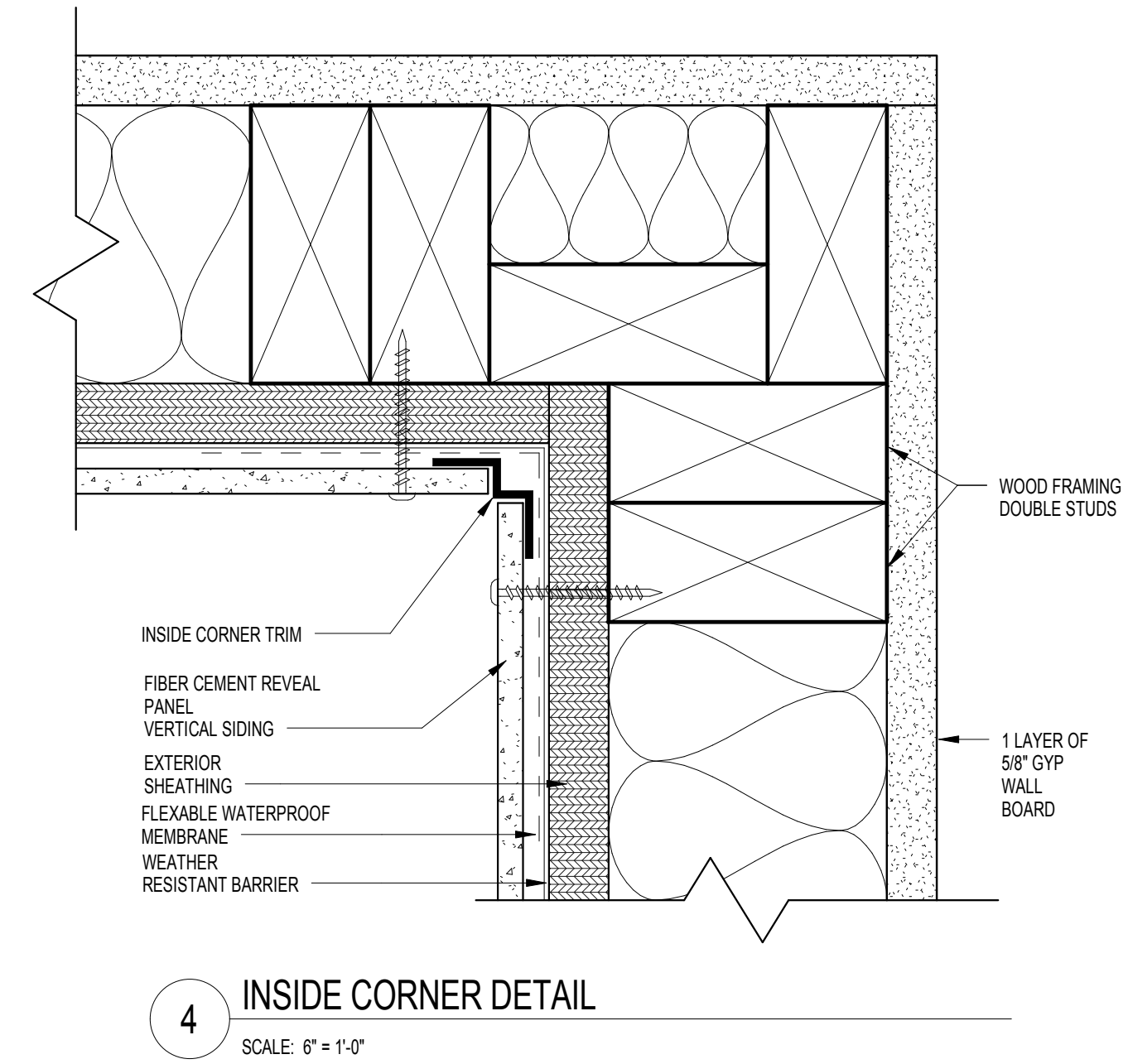
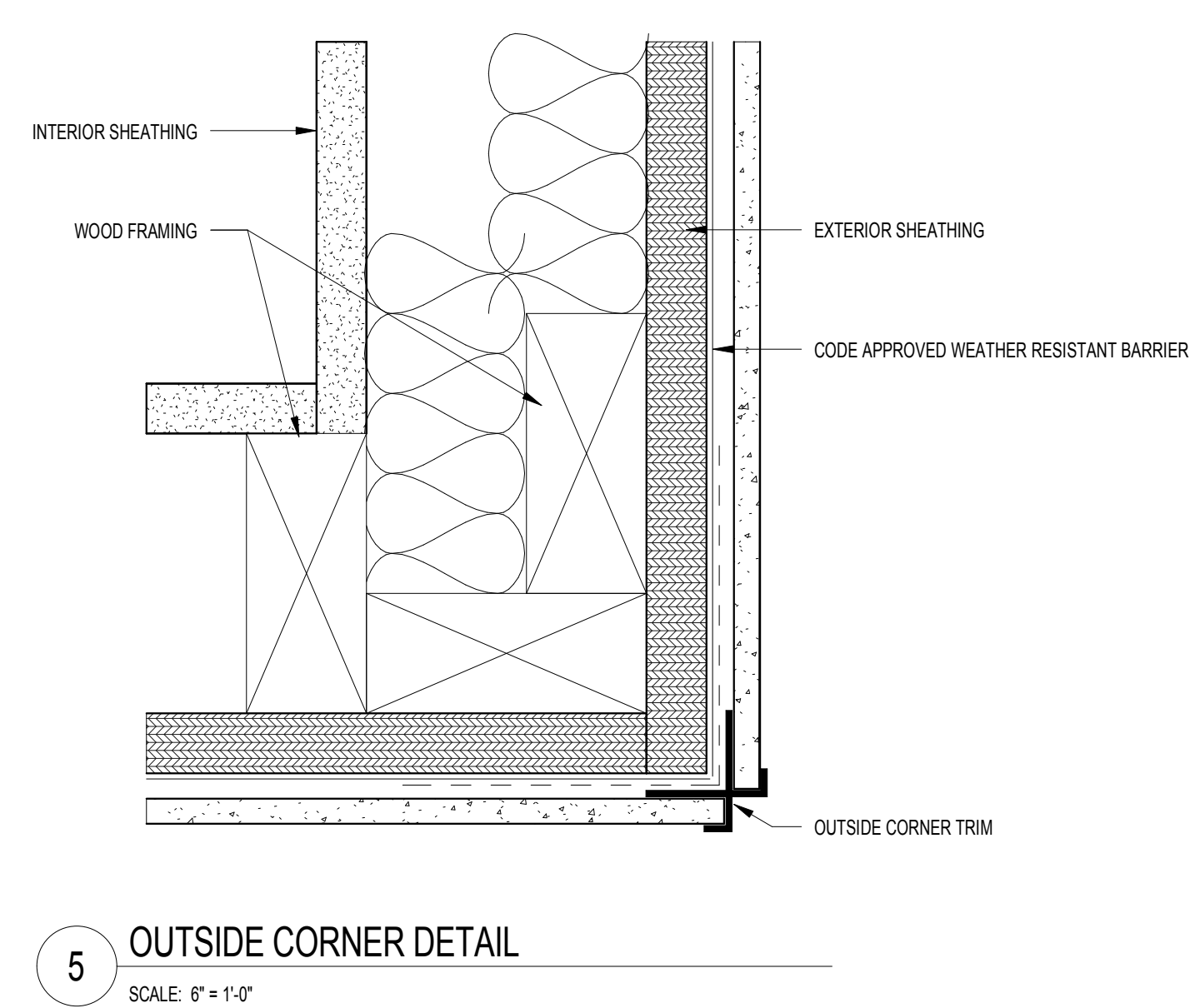
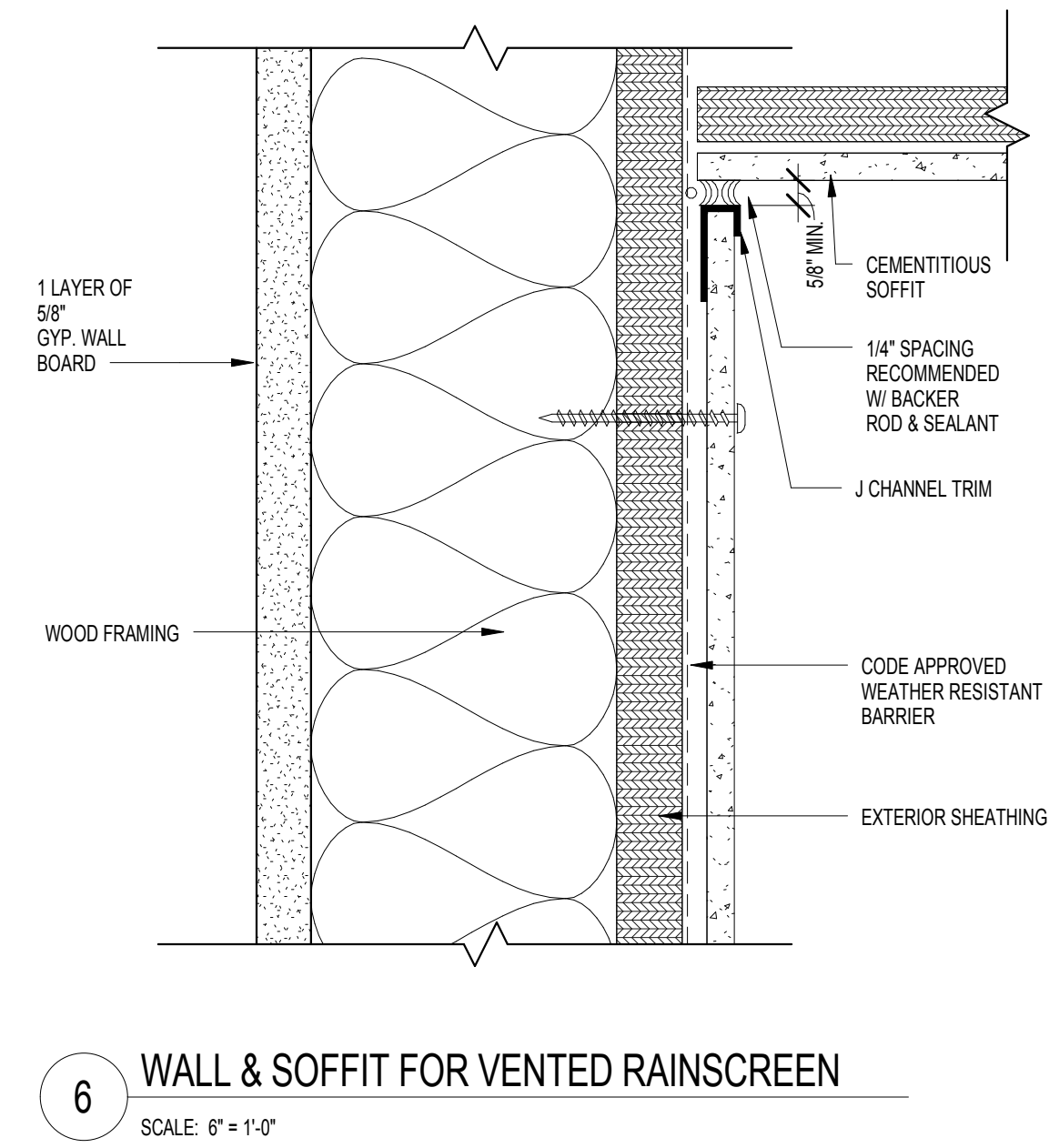
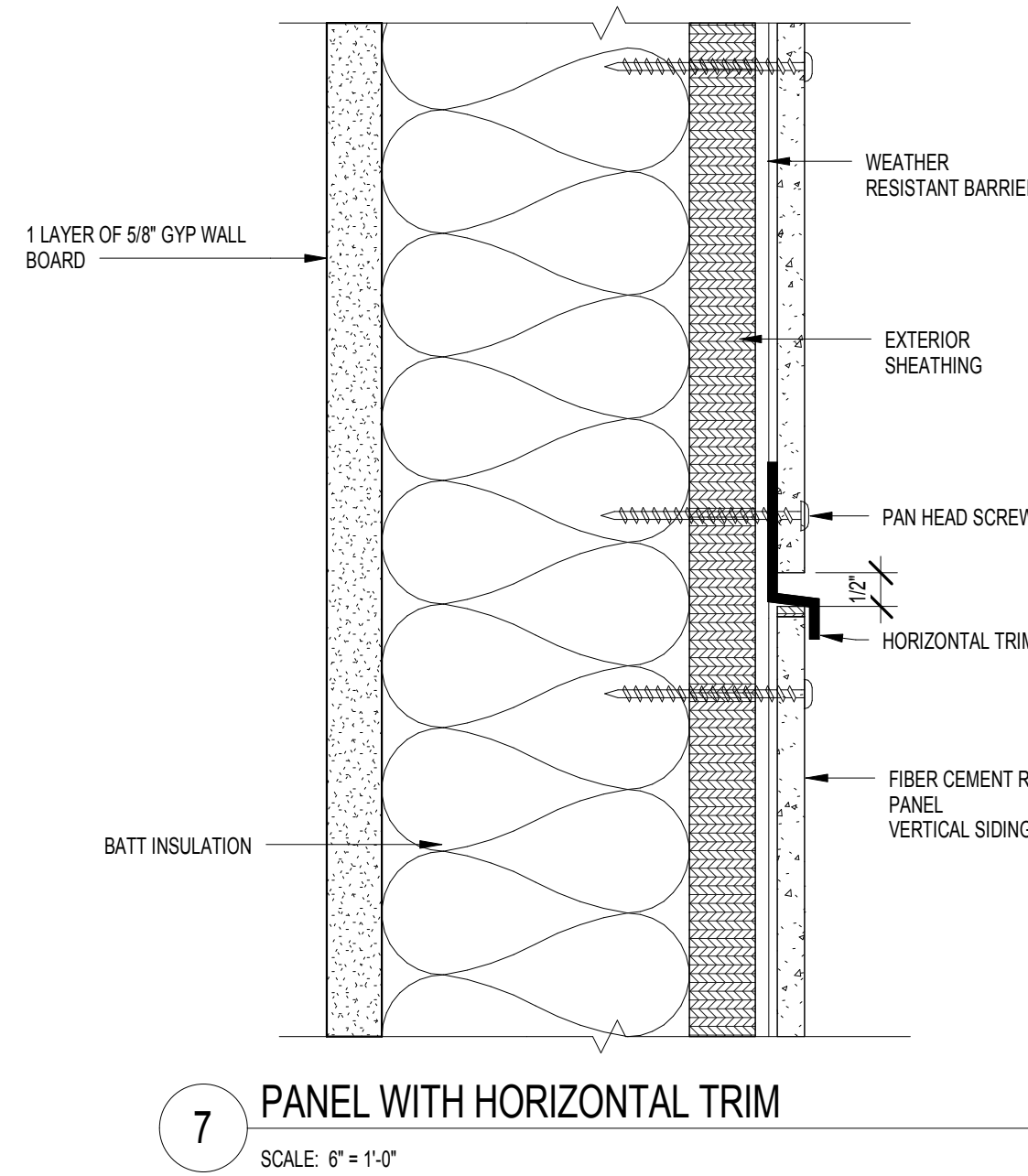
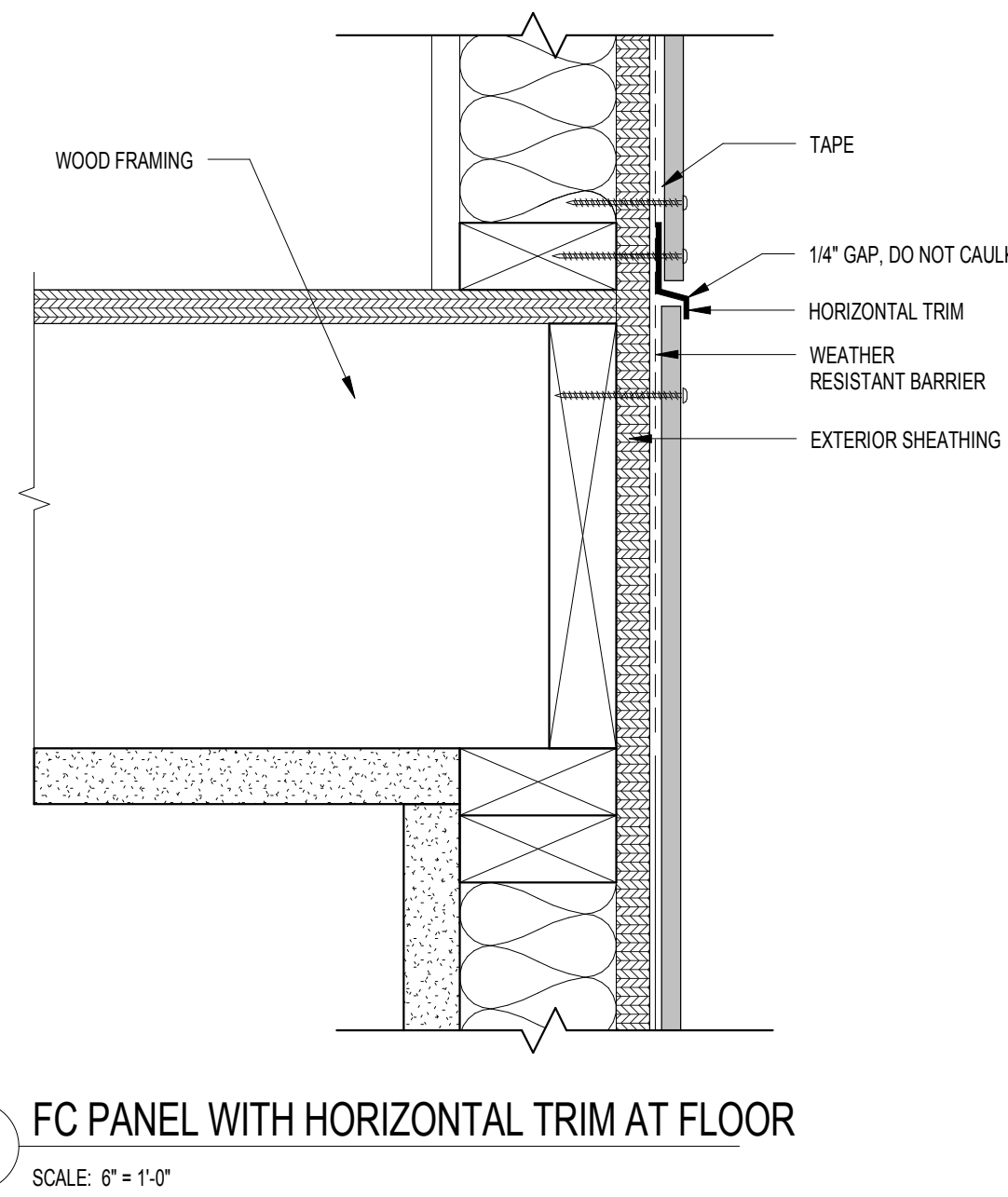
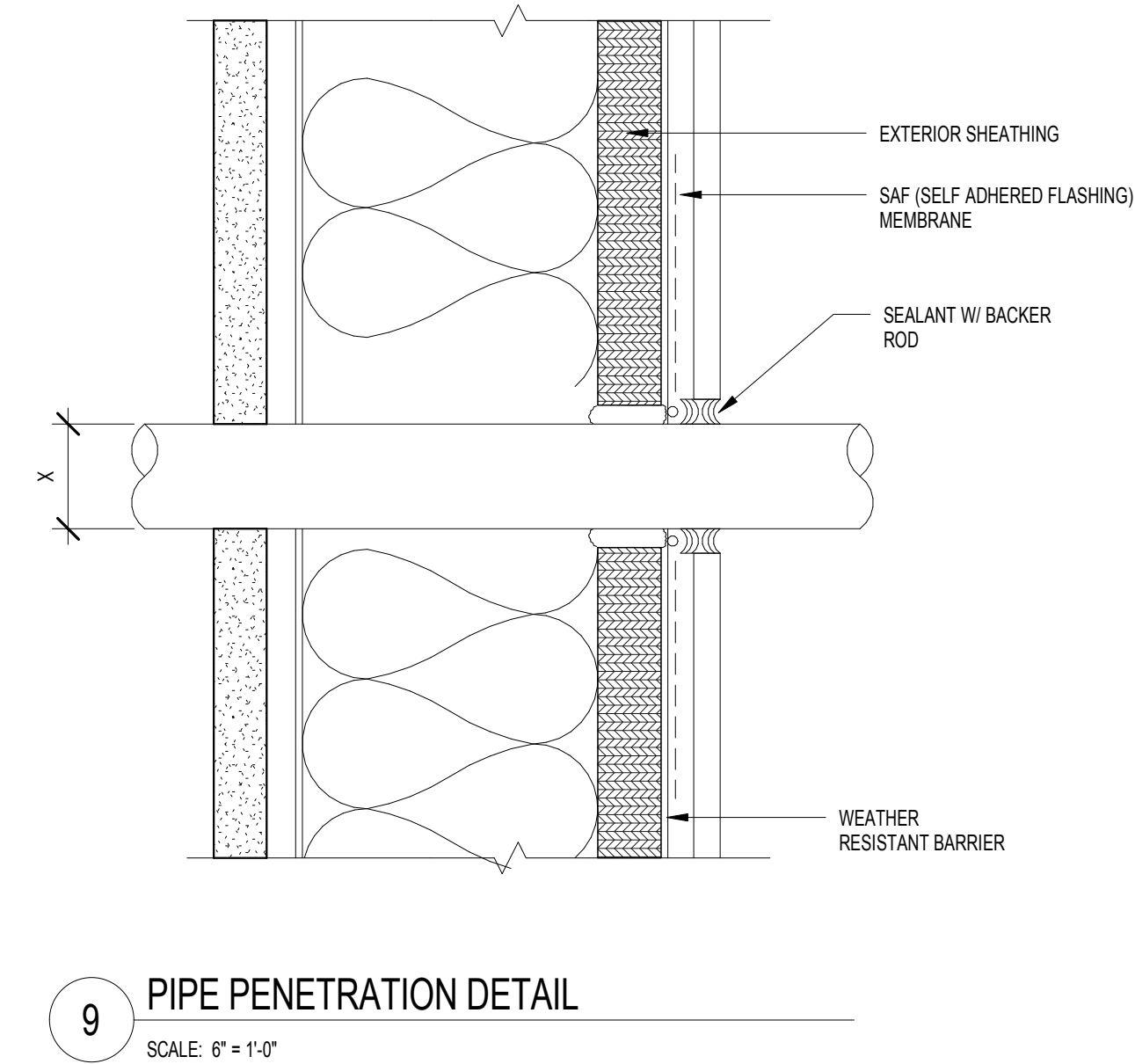
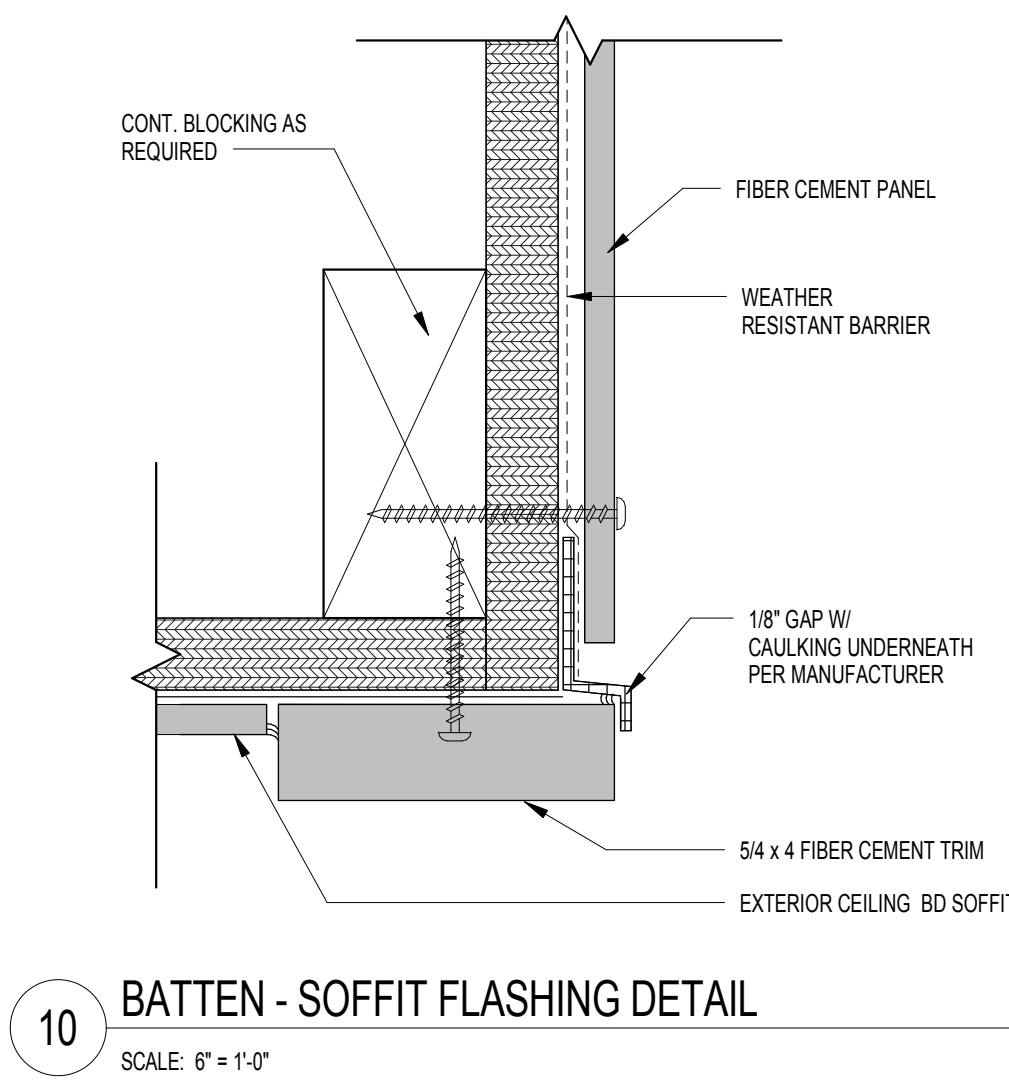
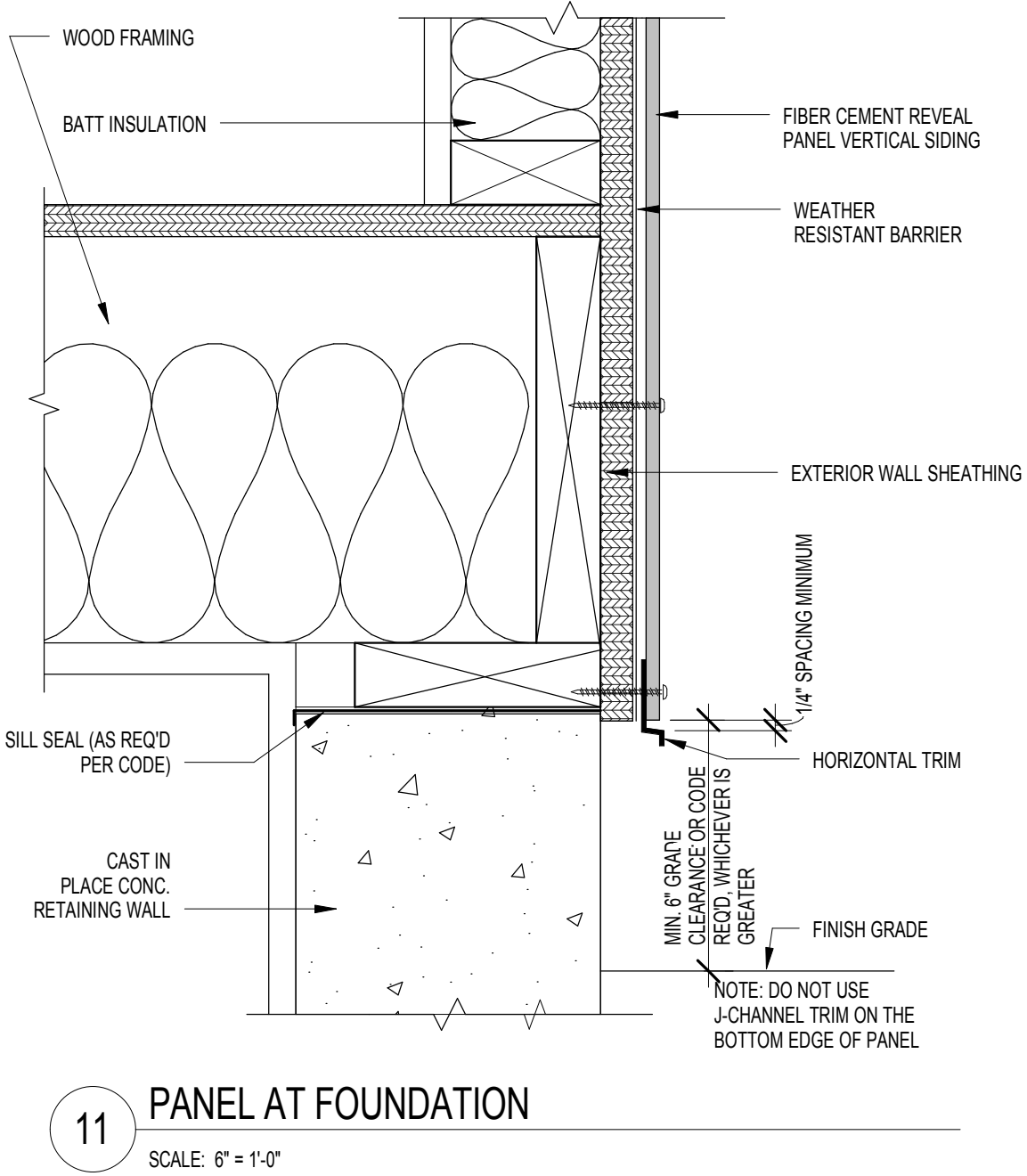
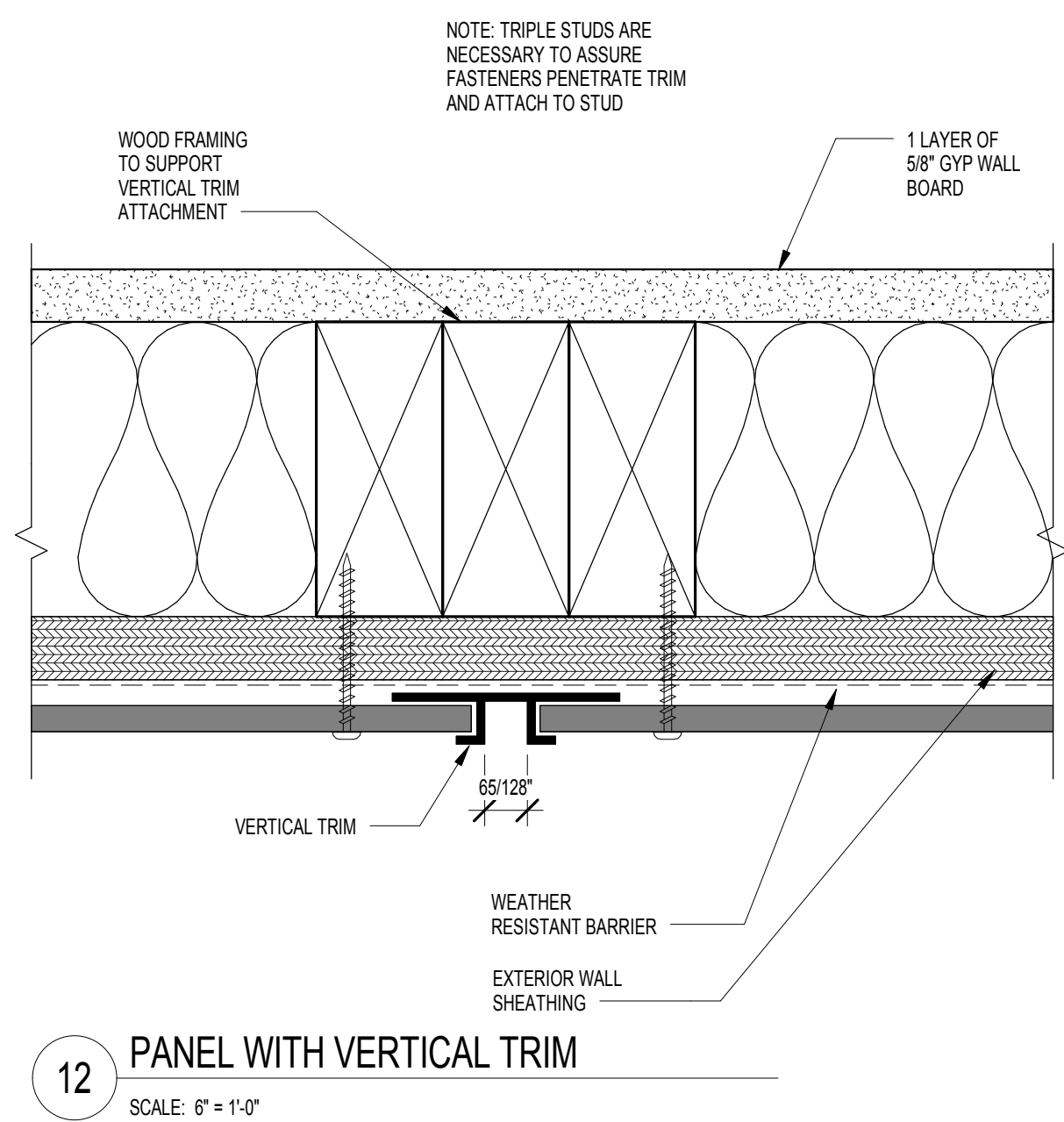
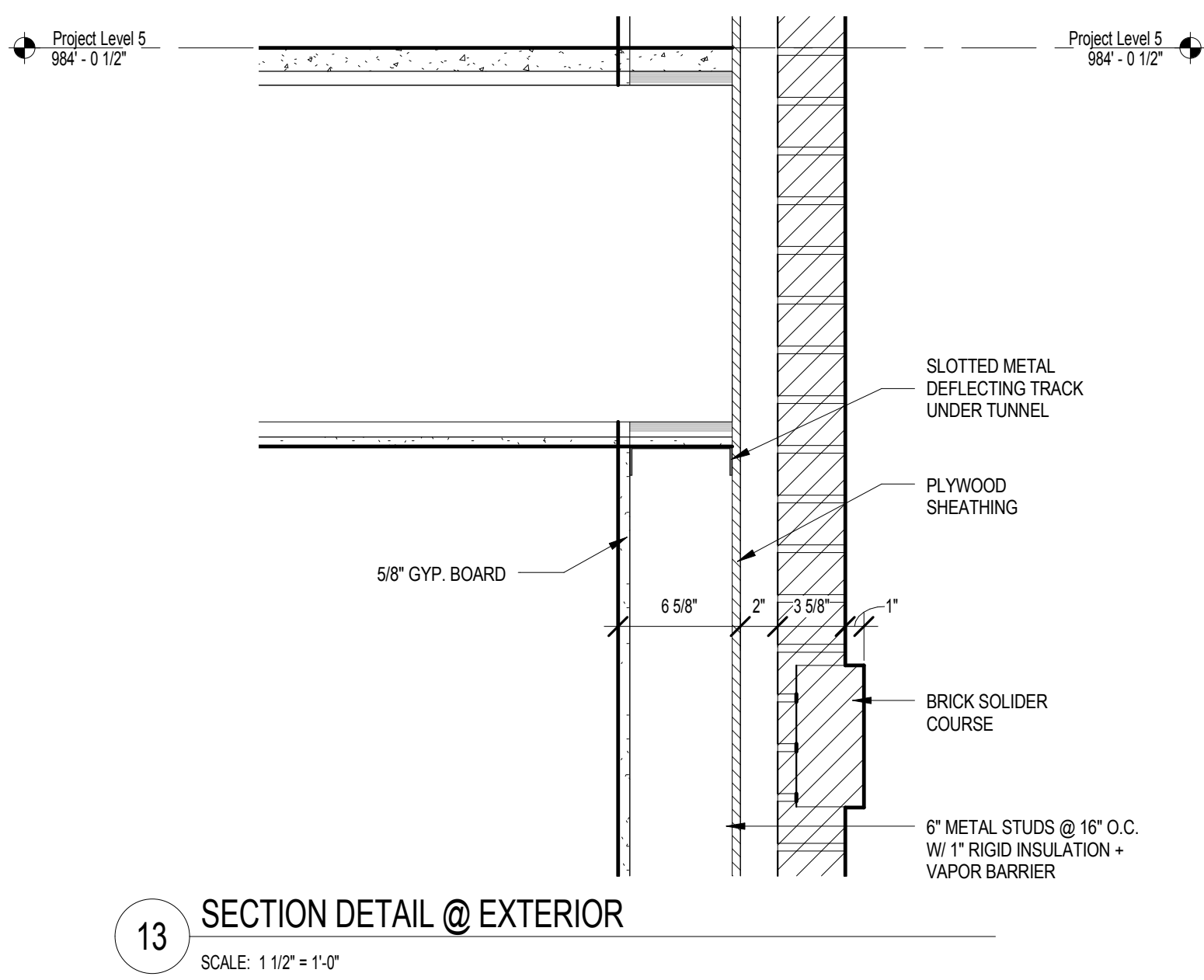


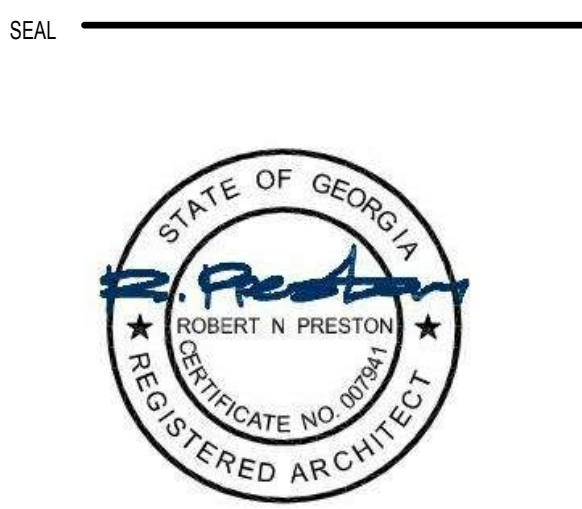
C:\Data File\Revit (2016)\483101 Circle 75 IL R16-C_drawing.rvt 10/4/2017 5:05:02 PM



THE PRESTON
PARTNERSHIP, LLC
A MULTI-DISCIPLINARY DESIGN FIRM

SOUTH TERRACES
115 PERIMETER CENTER PLACE, SUITE 950
ATLANTA, GEORGIA 30346
TELEPHONE: 770 396 7248
FAX: 770 396 2945

WWW.THEPRESTONPARTNERSHIP.COM
CONSULTANT



PROJECT
**RESERVE AT THE
BALLPARK, PHASE II,
AKA REVEL AT THE
BALLPARK**
2885 CRESCENT PKWY
SMYRNA, GA 30080



ATLANTIC REALTY
PARTNERS
3438 PEACHTREE ROAD
SUITE 1425
ATLANTA, GA 30326

ISSUES & REVISIONS
PERMIT SET 05/22/2017
3. BUILDING PERMIT 07/25/2017

DATE 05/22/2017
JOB NUMBER 1493101
DRAWN BY MDB
CHECKED BY CW
SHEET TITLE FIBER CEMENT PANEL DETAILS

SHEET NUMBER
BUILDING PERMIT RE-SUBMISSION

COMMENTS
30X42 © 2017 The Preston Partnership, LLC

A5-34