

**THE PRESTON  
PARTNERSHIP, LLC**  
A MULTI-DISCIPLINARY DESIGN FIRM

SOUTH TERRACES  
115 PERIMETER CENTER PLACE, SUITE 950  
ATLANTA, GEORGIA 30346  
TELEPHONE: 770 396 7248  
FAX: 770 396 2945

WWW.THEPRESTONPARTNERSHIP.COM

CONSULTANT

SEAL



PROJECT

**RESERVE AT THE  
BALLPARK, PHASE II,  
AKA REVEL AT THE  
BALLPARK**  
2885 CRESCENT PKWY  
SMYRNA, GA 30080

FOR



**ATLANTIC REALTY  
PARTNERS**

3438 PEACHTREE ROAD  
SUITE 1425  
ATLANTA, GA 30326

ISSUES & REVISIONS

CONCEPTUAL DESIGN	08/21/2015
SCHEMATIC DESIGN	09/28/2015
CM/DESIGN DEVELOPMENT	10/15/2015
GMP	04/03/2017
PERMIT SET	05/22/2017
3. BUILDING PERMIT	07/25/2017

DATE **05/22/2017**

JOB NUMBER **1493101**

DRAWN BY **MDB**

CHECKED BY **CW**

SHEET TITLE **MATERIAL TRANSITION DETAILS**

SHEET NUMBER

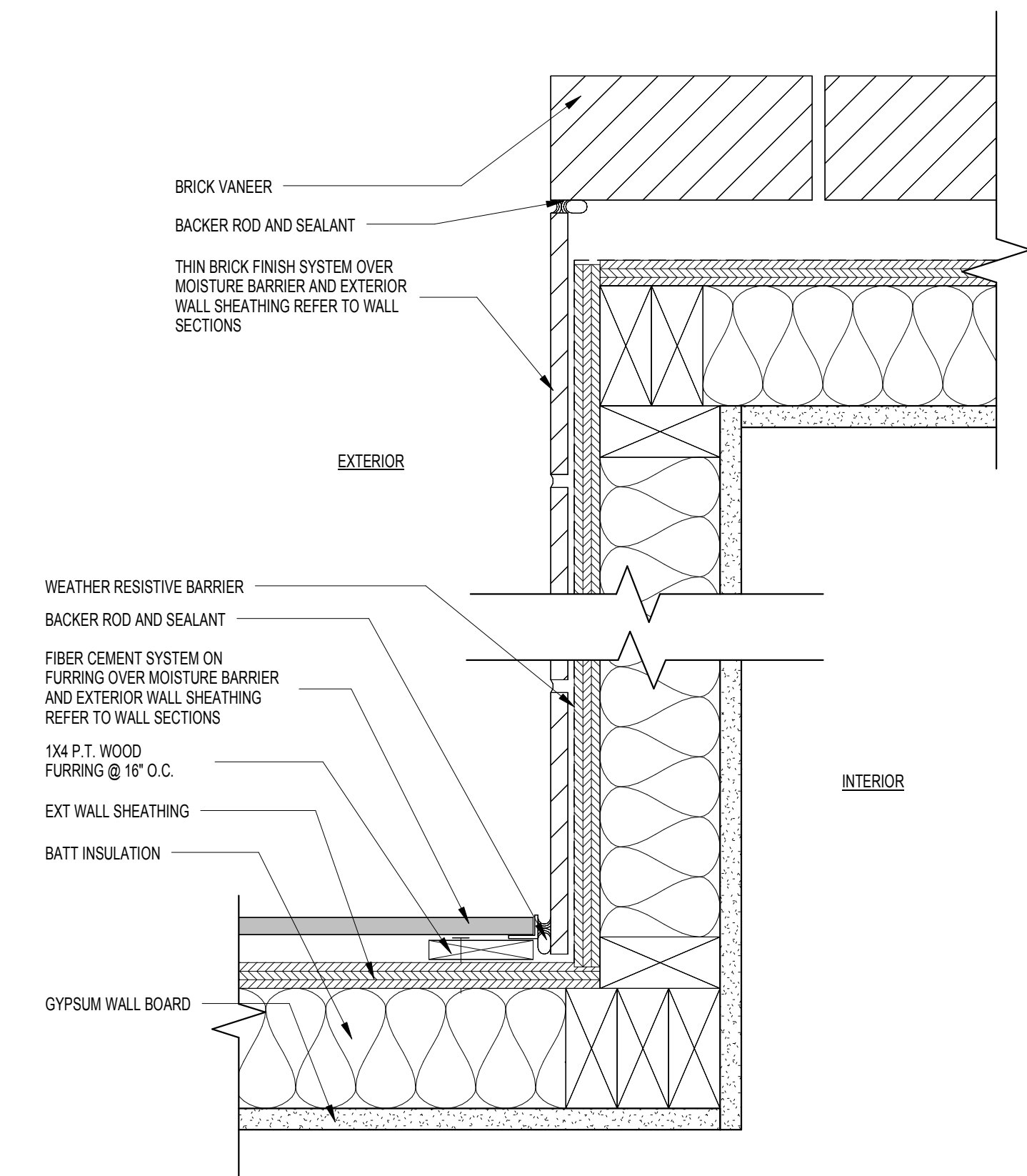
COMMENTS

BUILDING PERMIT RE-SUBMISSION

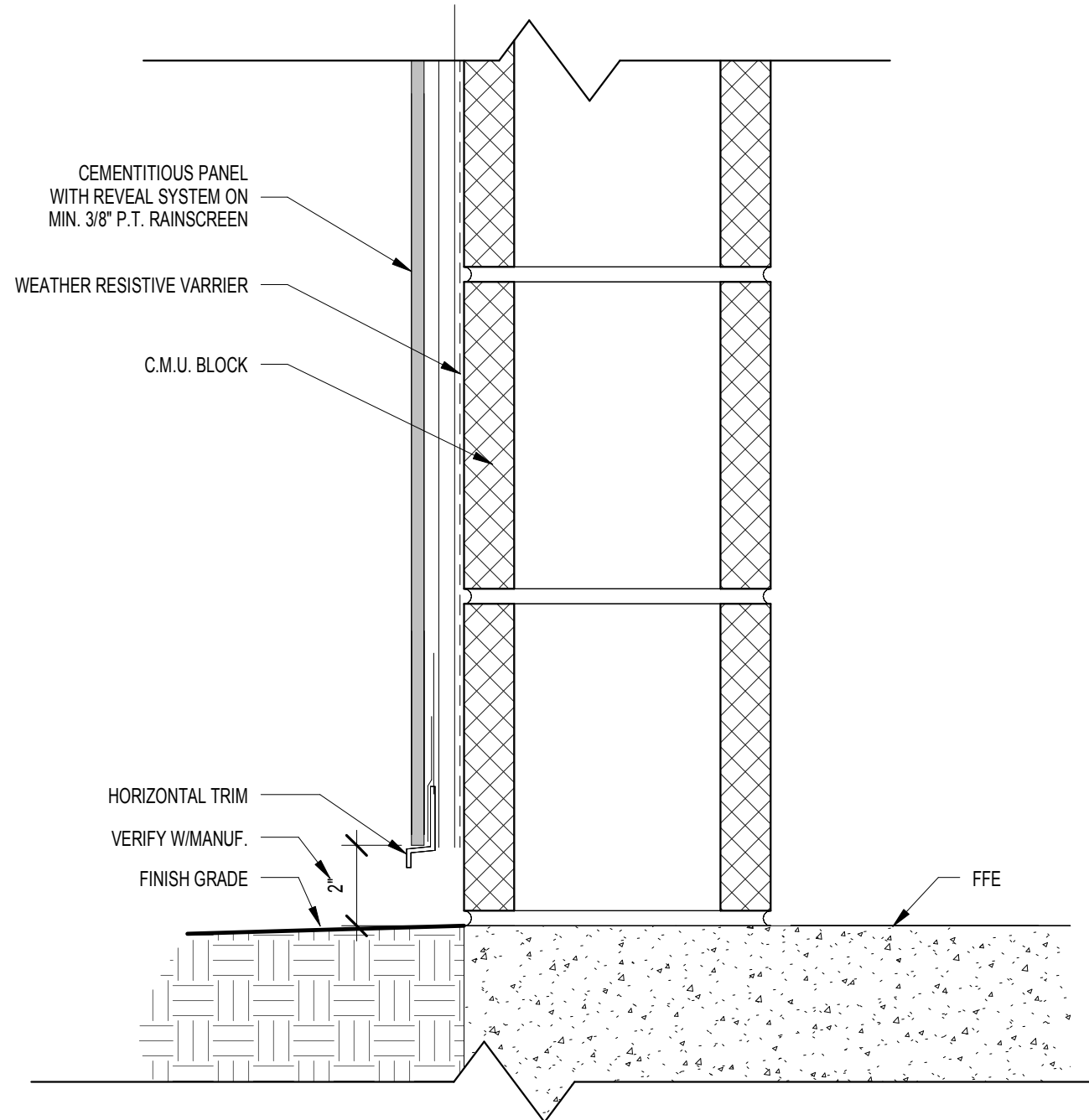
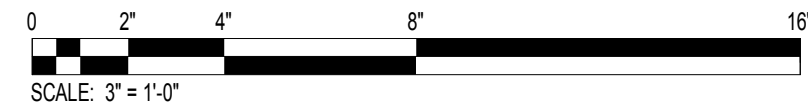
30X42

**A5-35**

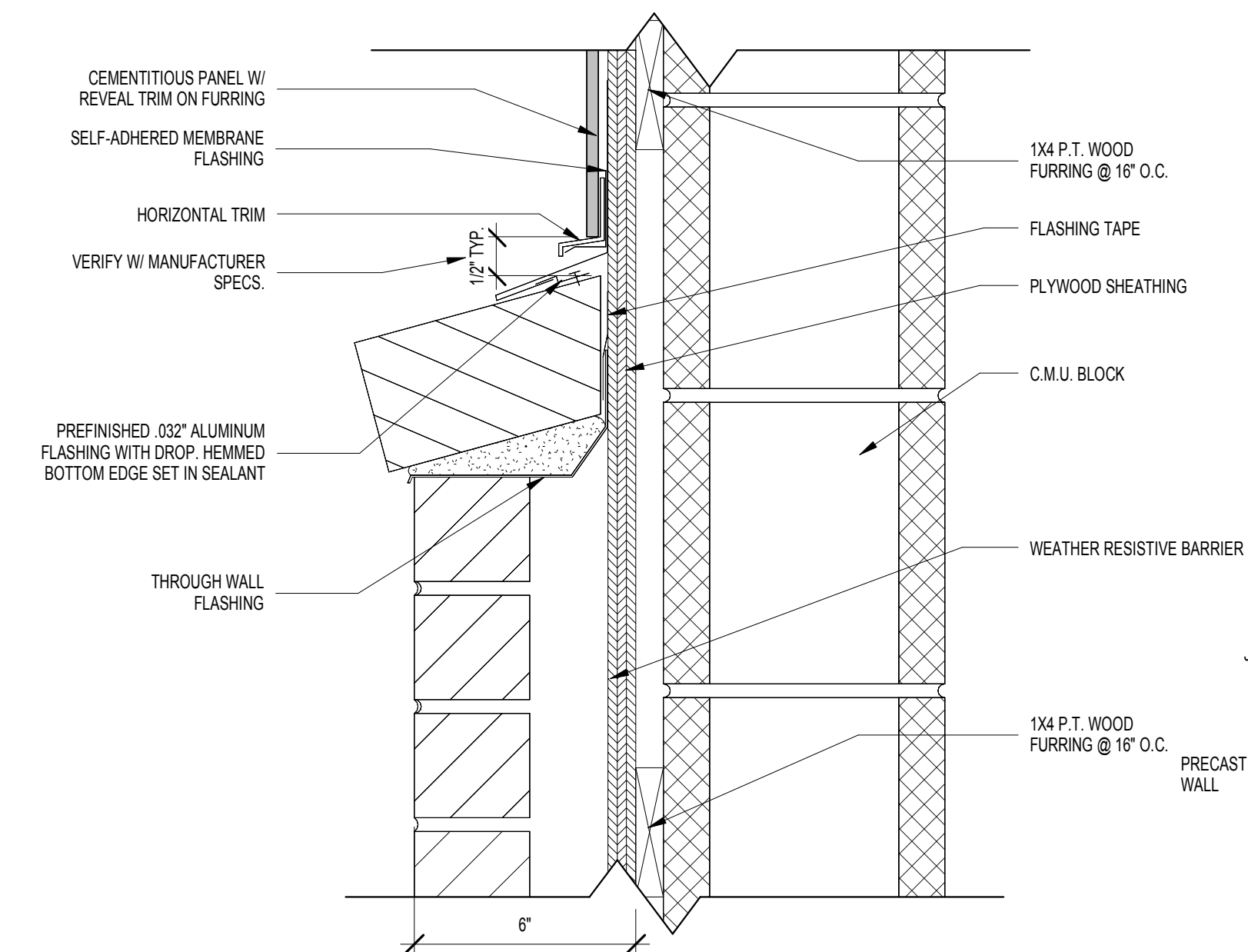
© 2017 The Preston Partnership, LLC



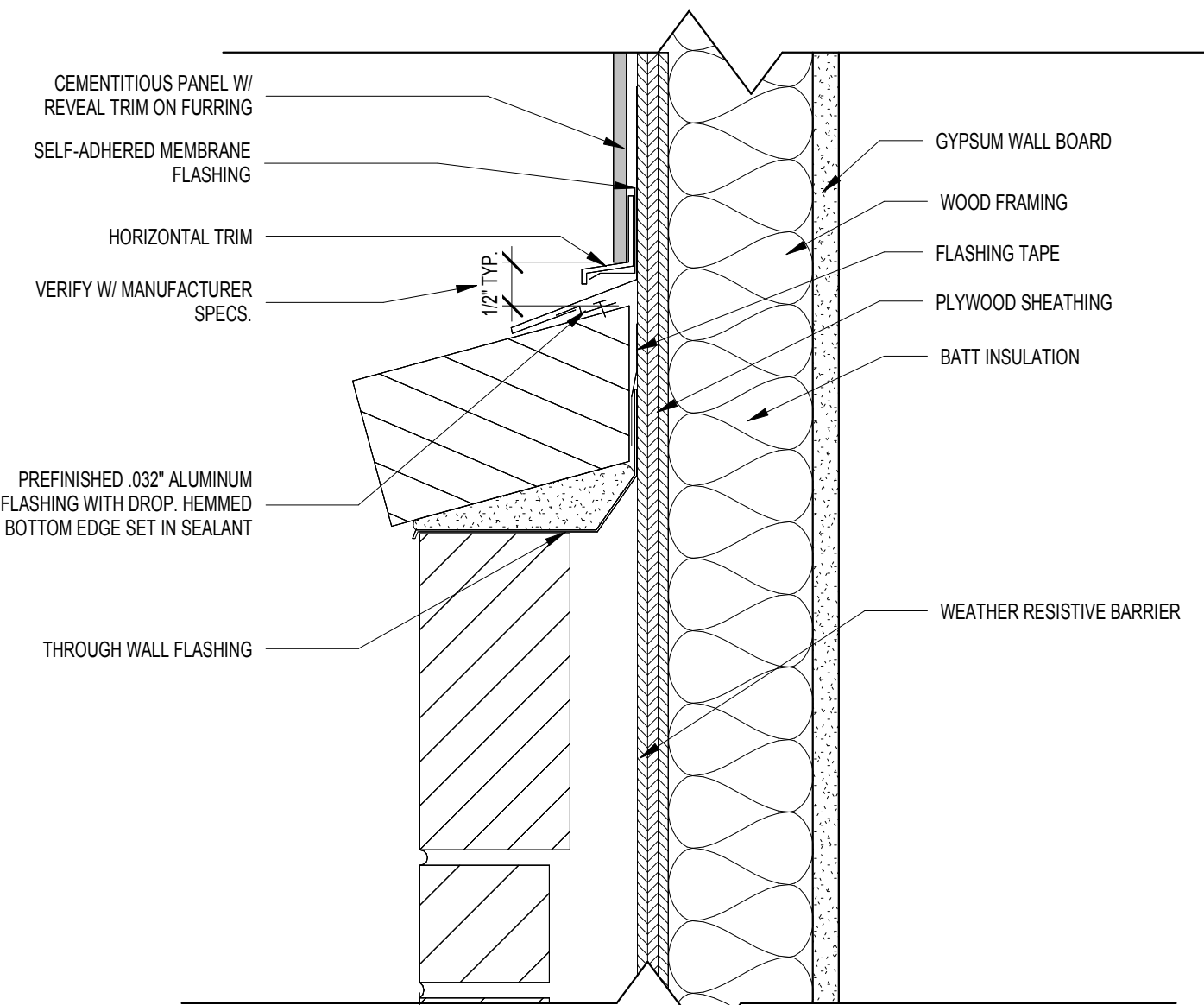
**14 CEMENTITIOUS PANEL TO THIN BRICK TO BRICK**



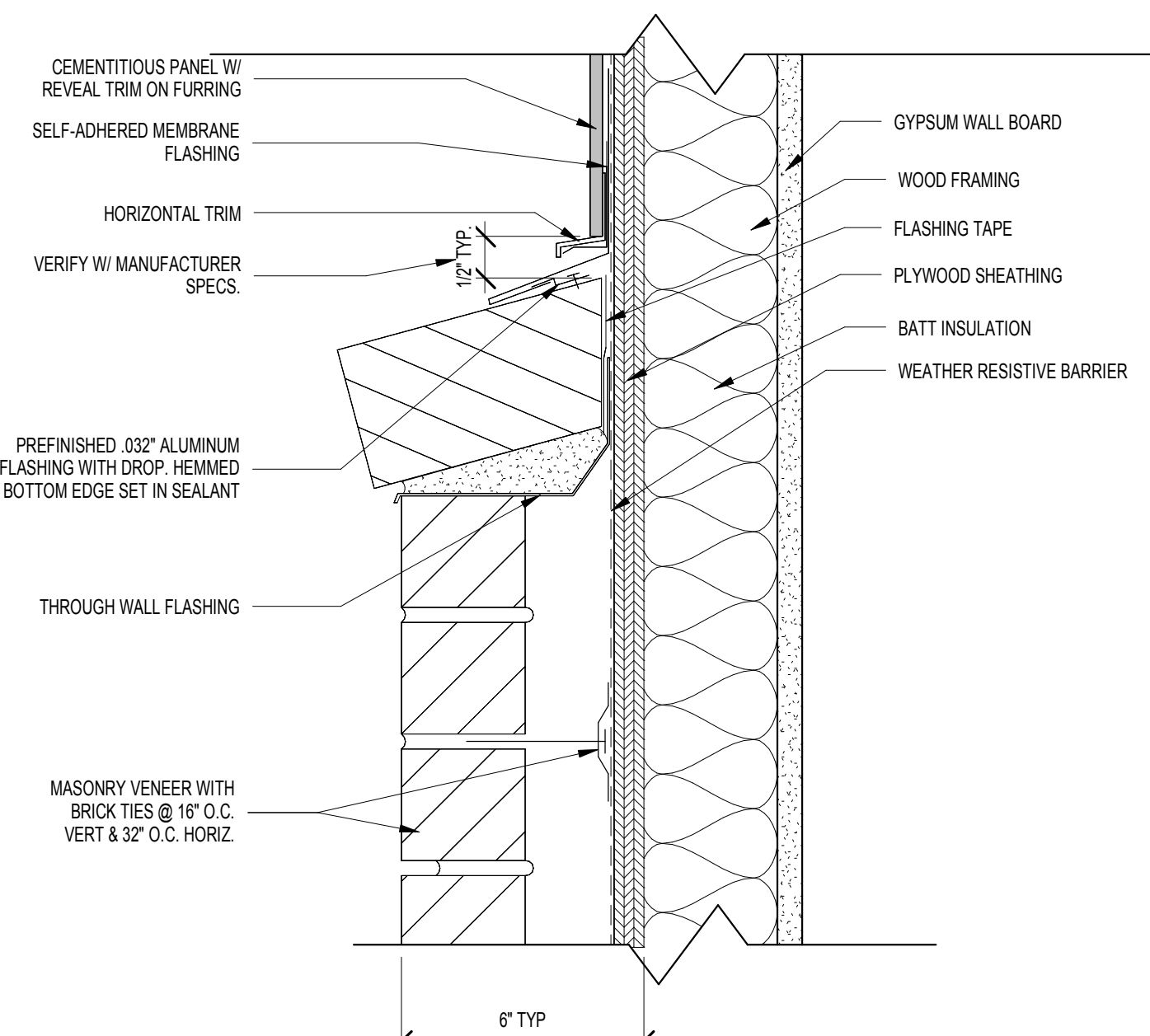
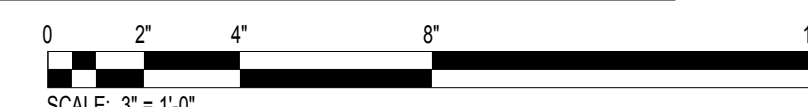
**13 CEMENTITIOUS PANEL AT GRADE ON C.M.U.**



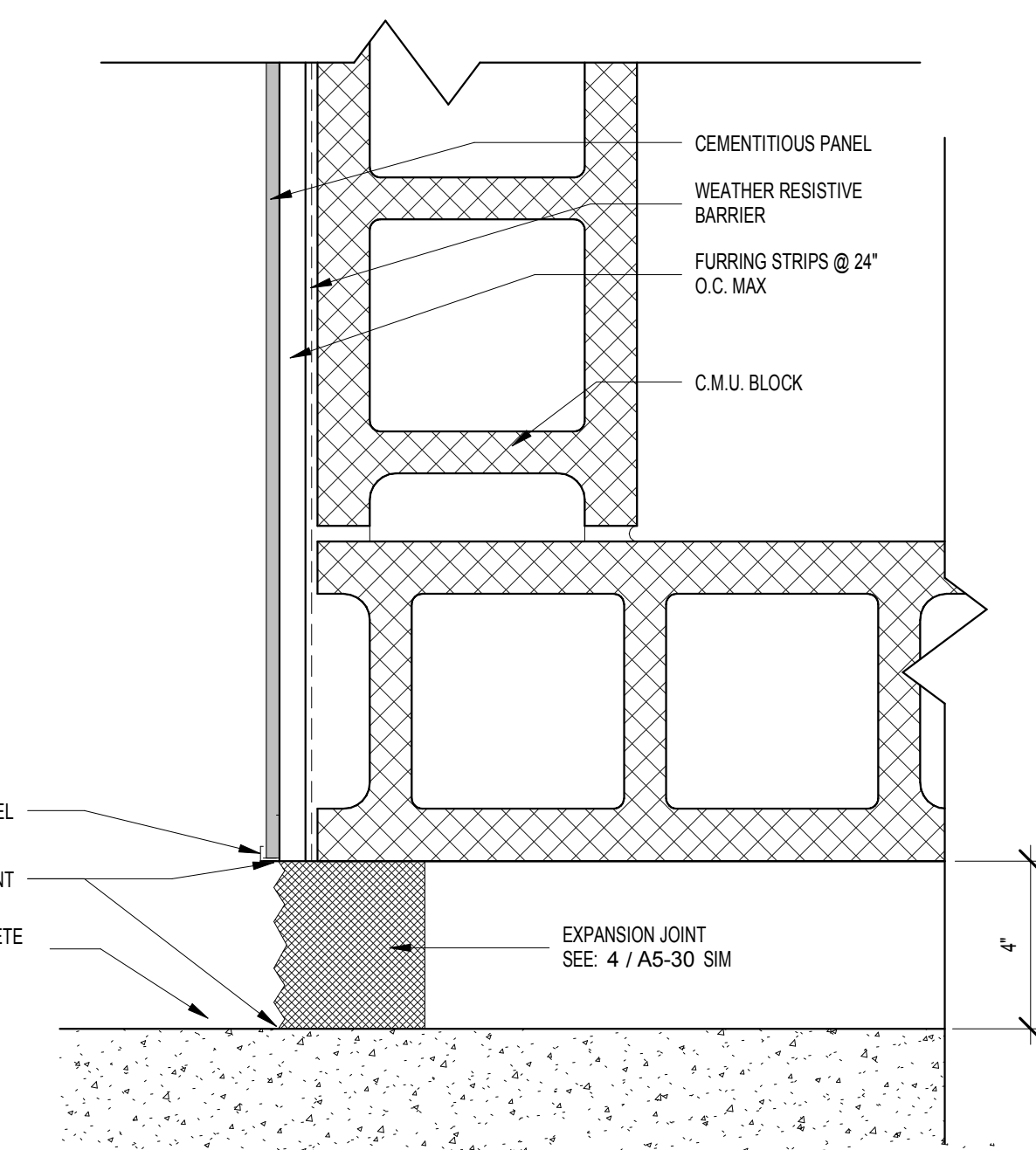
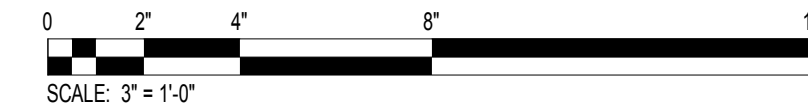
**12 CEMENTITIOUS PANEL TO BRICK ON C.M.U.**



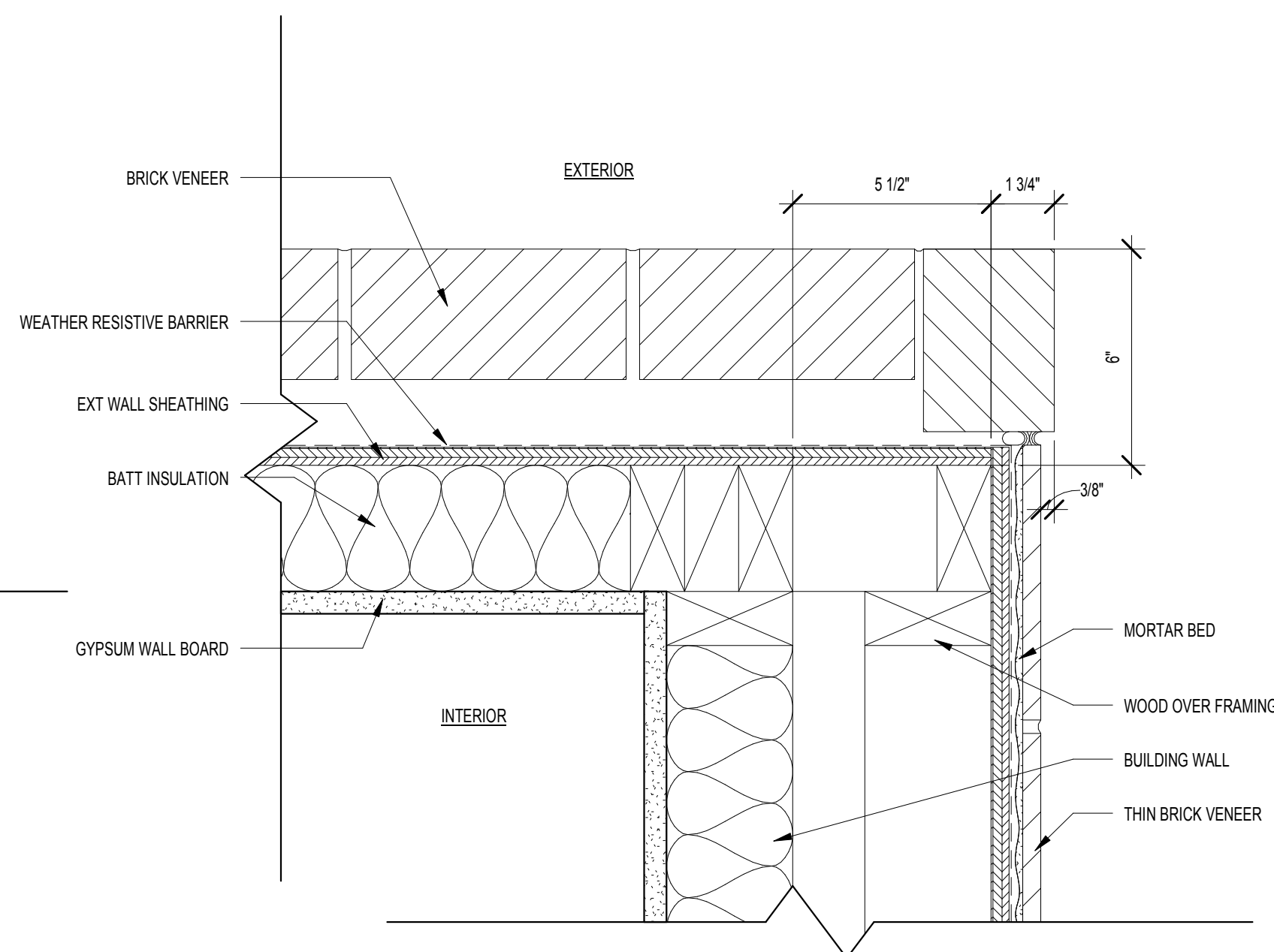
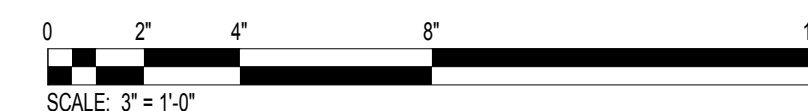
**11 CEMENTITIOUS PANEL TO BRICK 2**



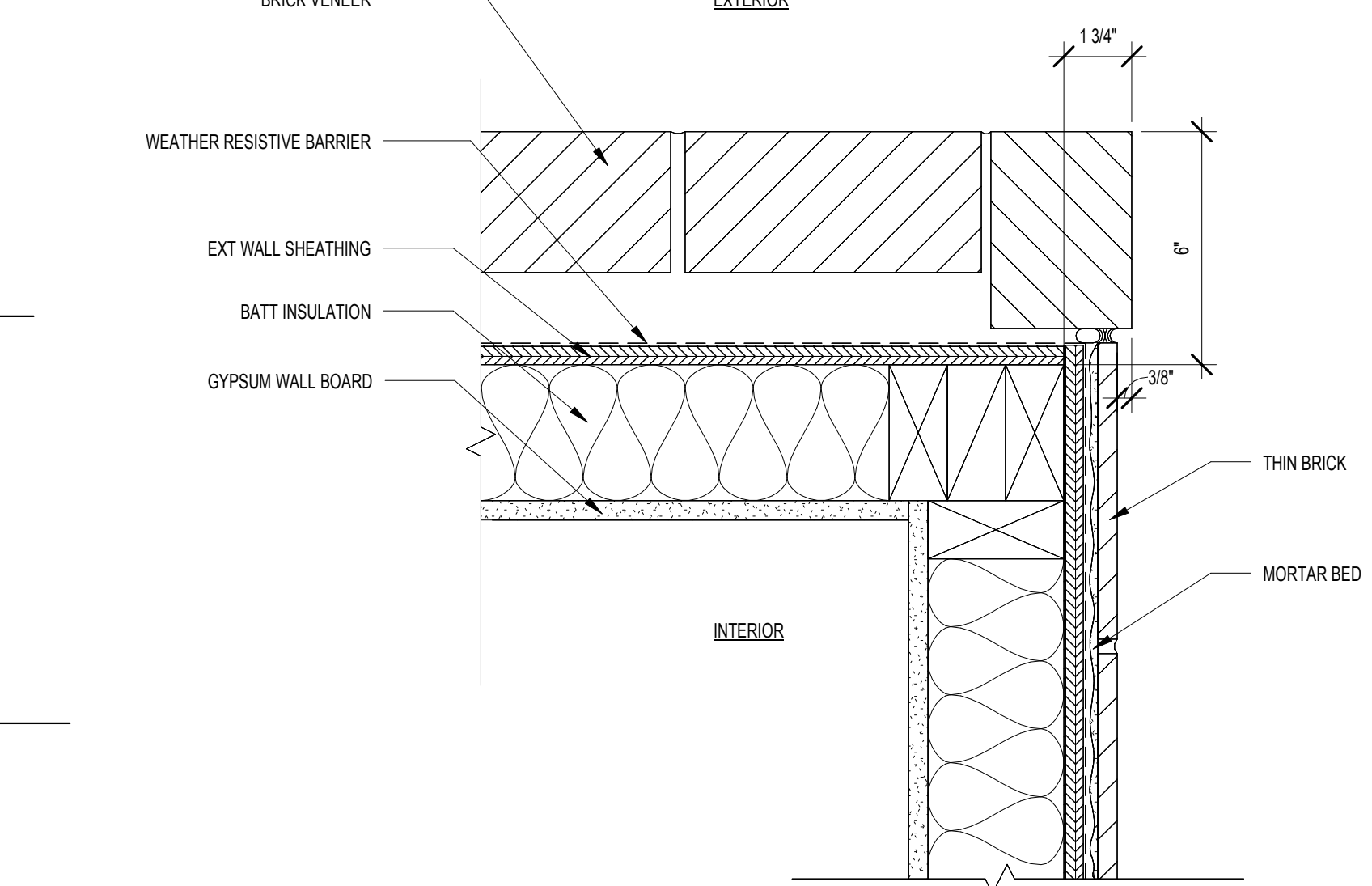
**10 CEMENTITIOUS PANEL TO BRICK**



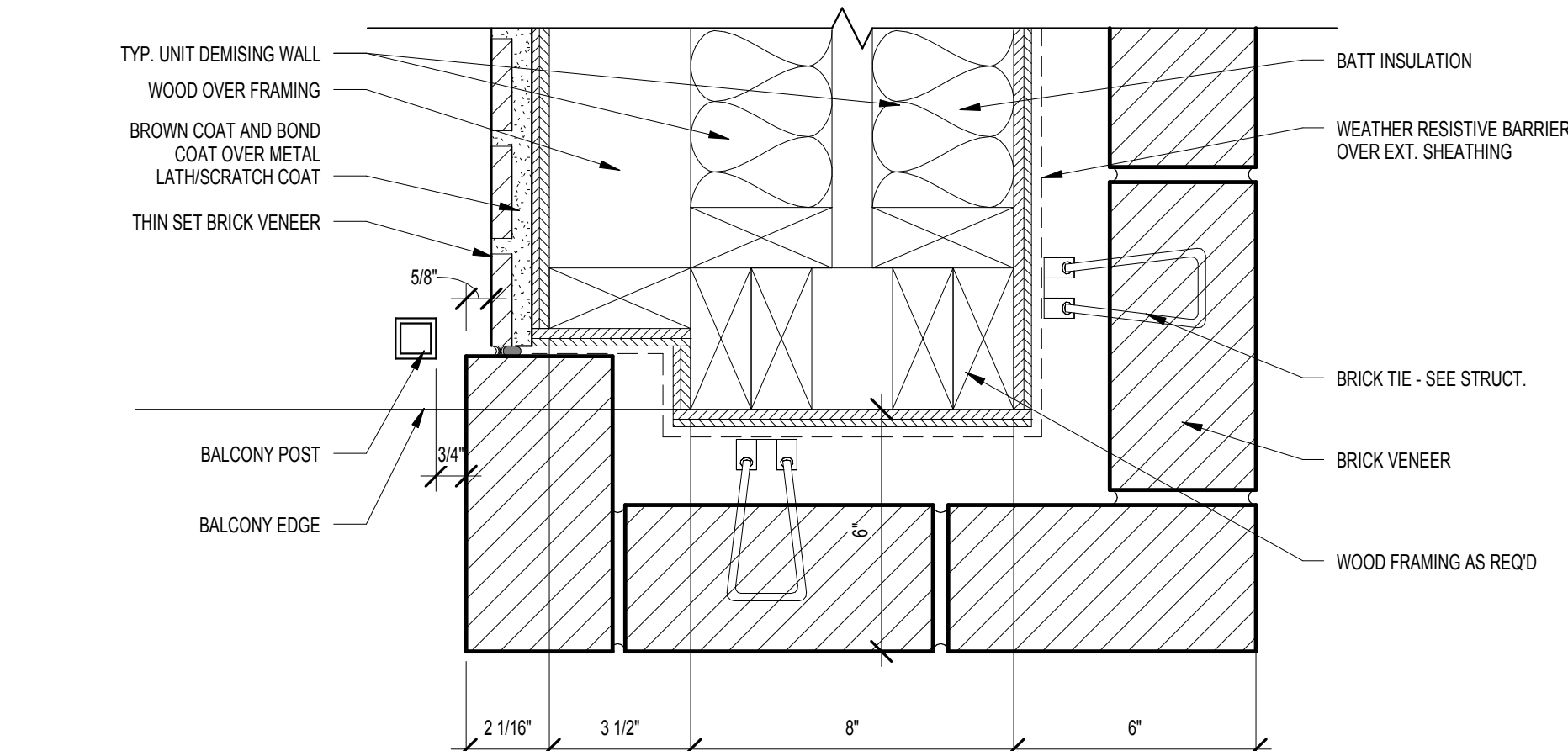
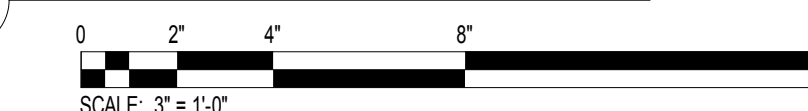
**9 CEMENTITIOUS PANEL ON C.M.U.**



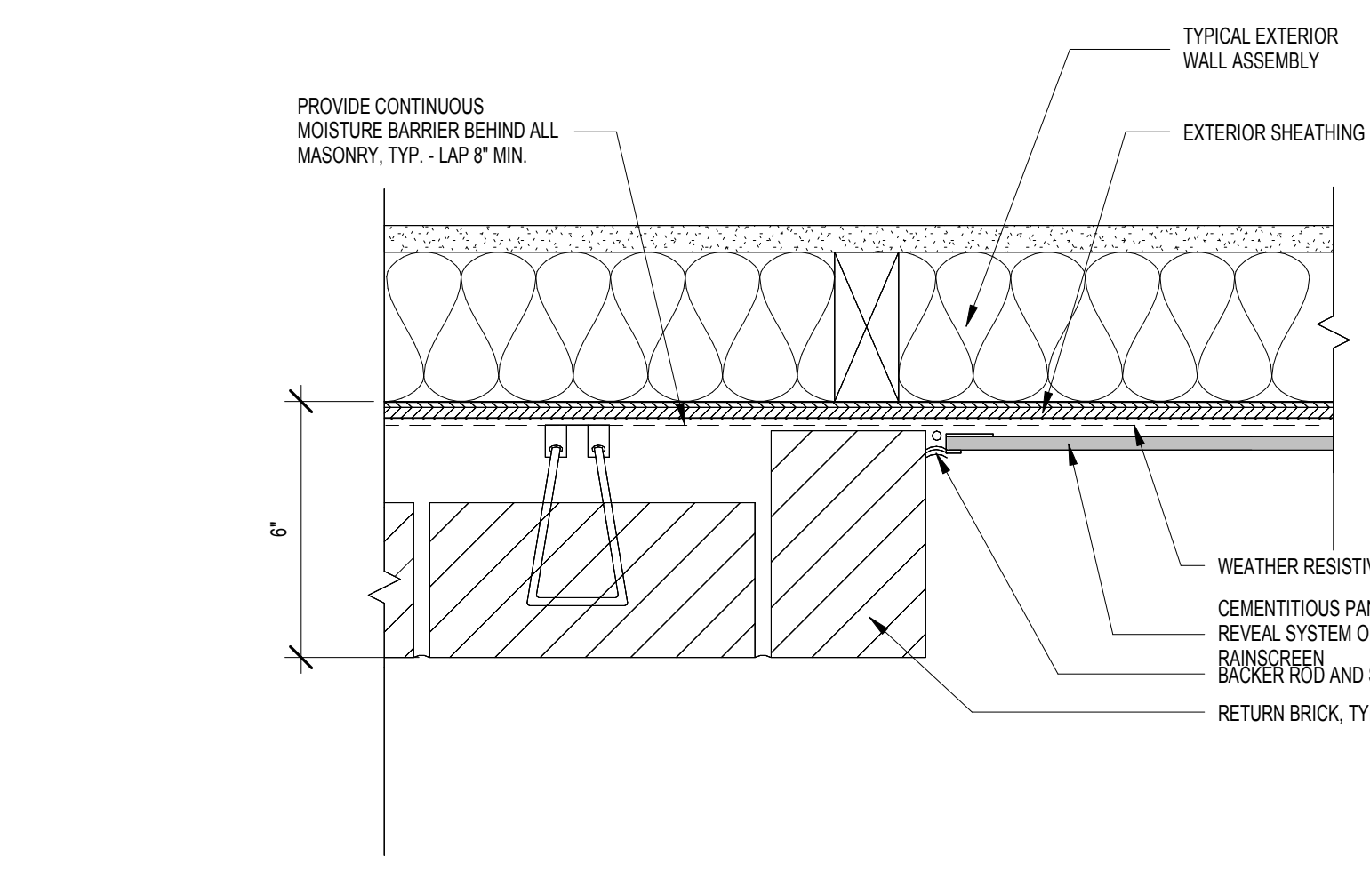
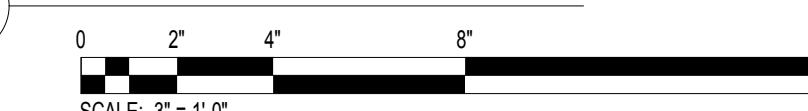
**8 BRICK TO THIN BRICK DETAIL-OVERFRAMED**



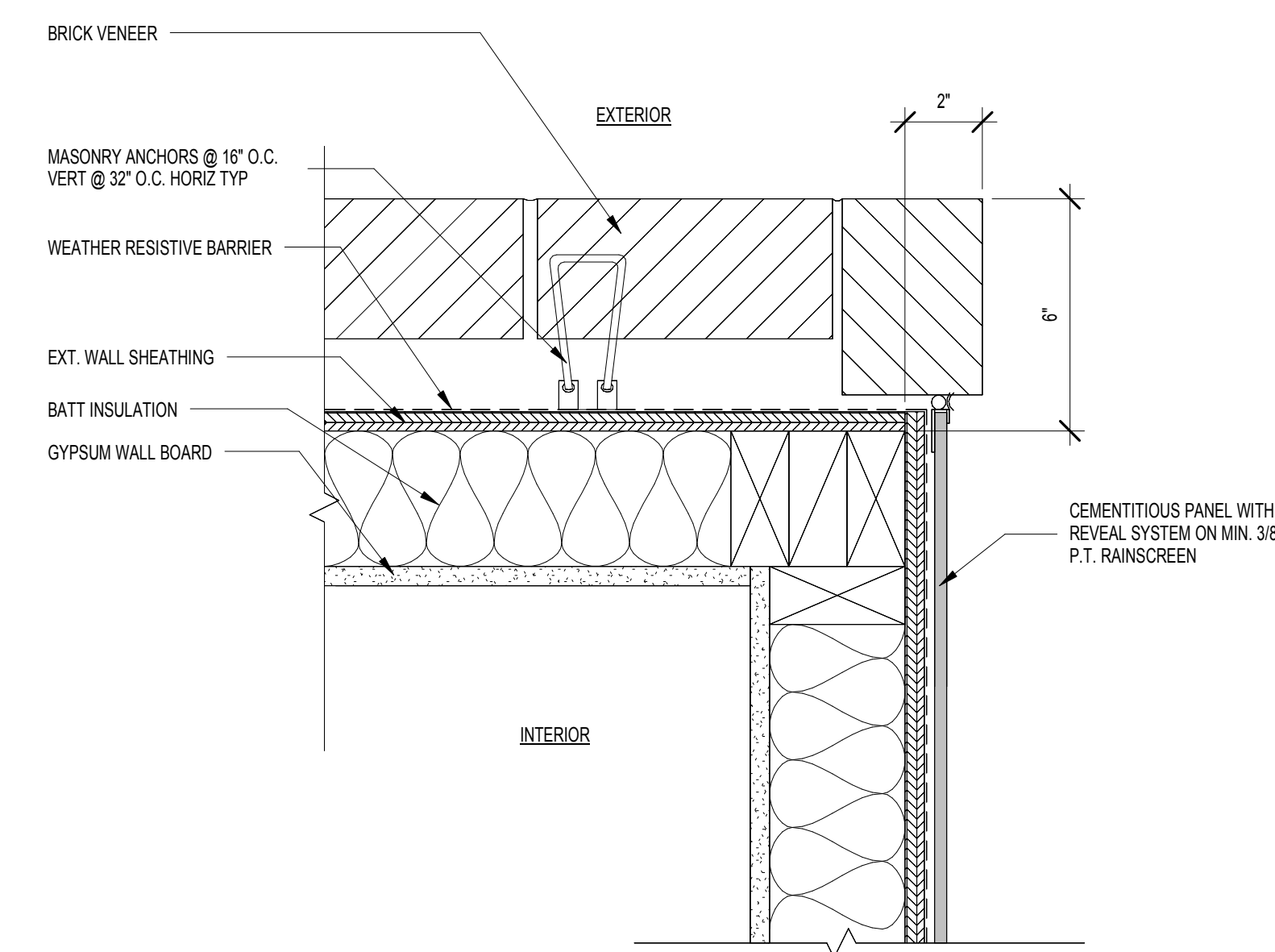
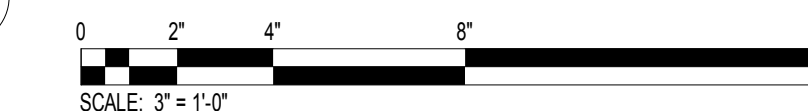
**7 BRICK TO THIN BRICK DETAIL**



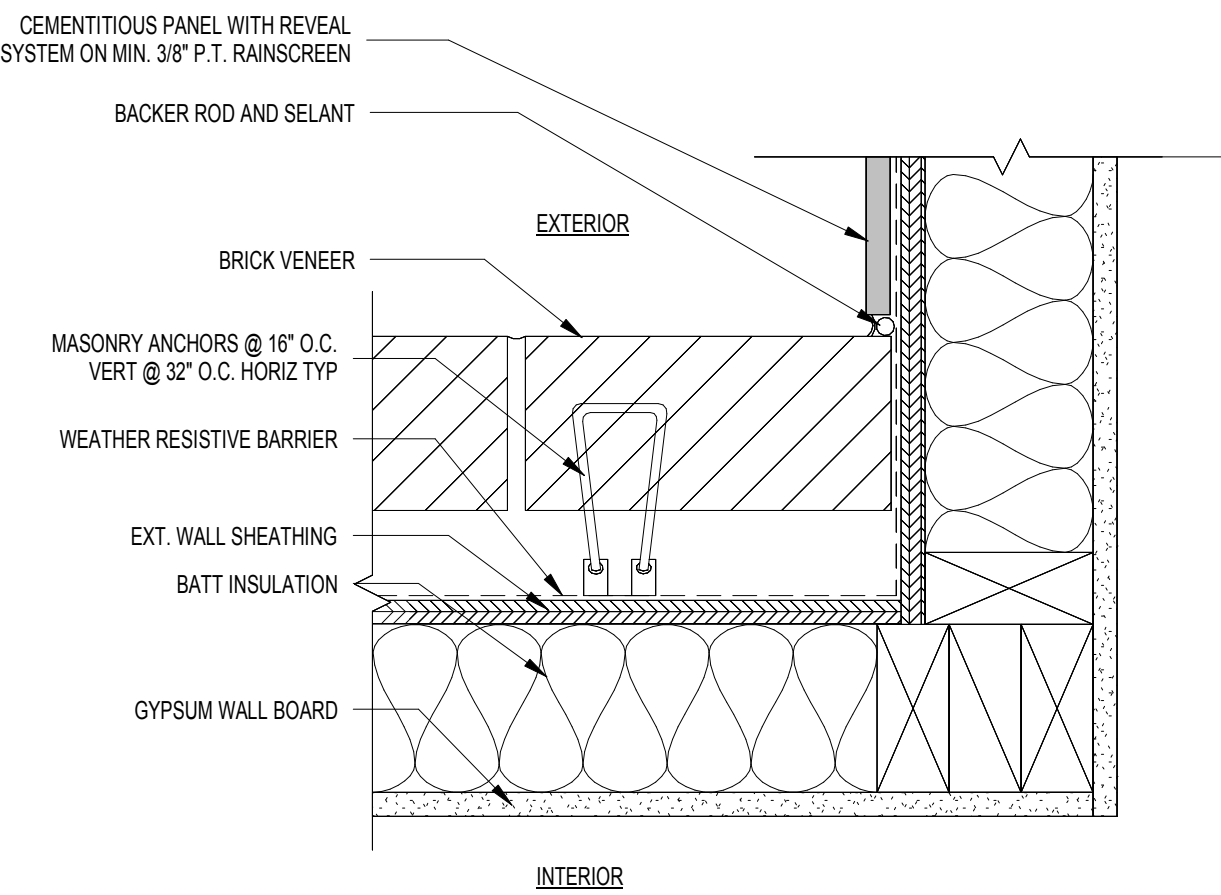
**6 PLAN AT BALCONY EDGE**



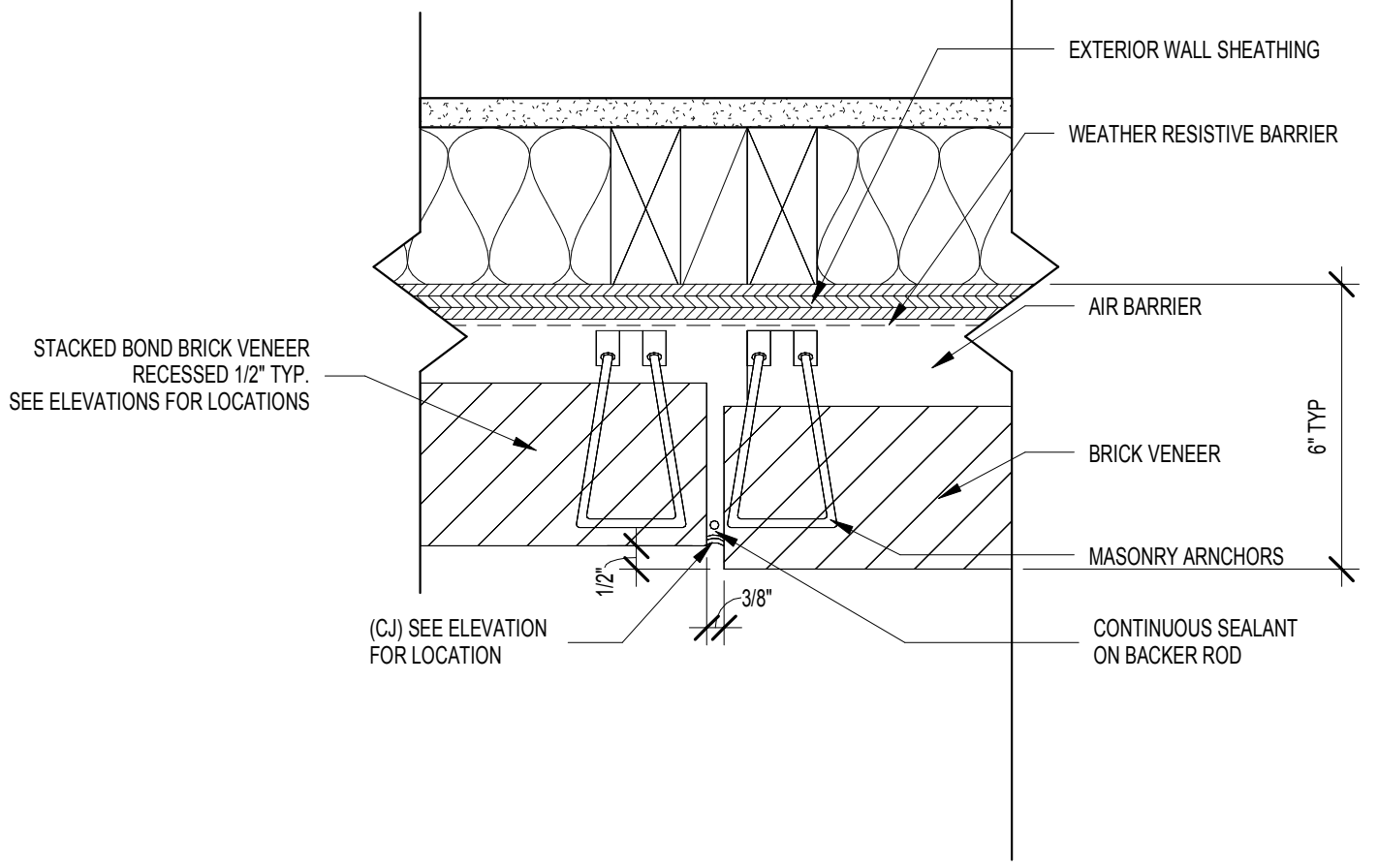
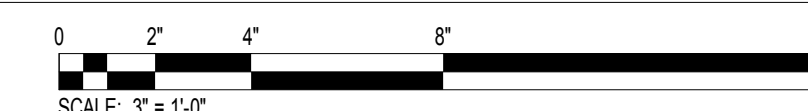
**5 BRICK TO CEMENTITIOUS PANEL DETAIL 3**



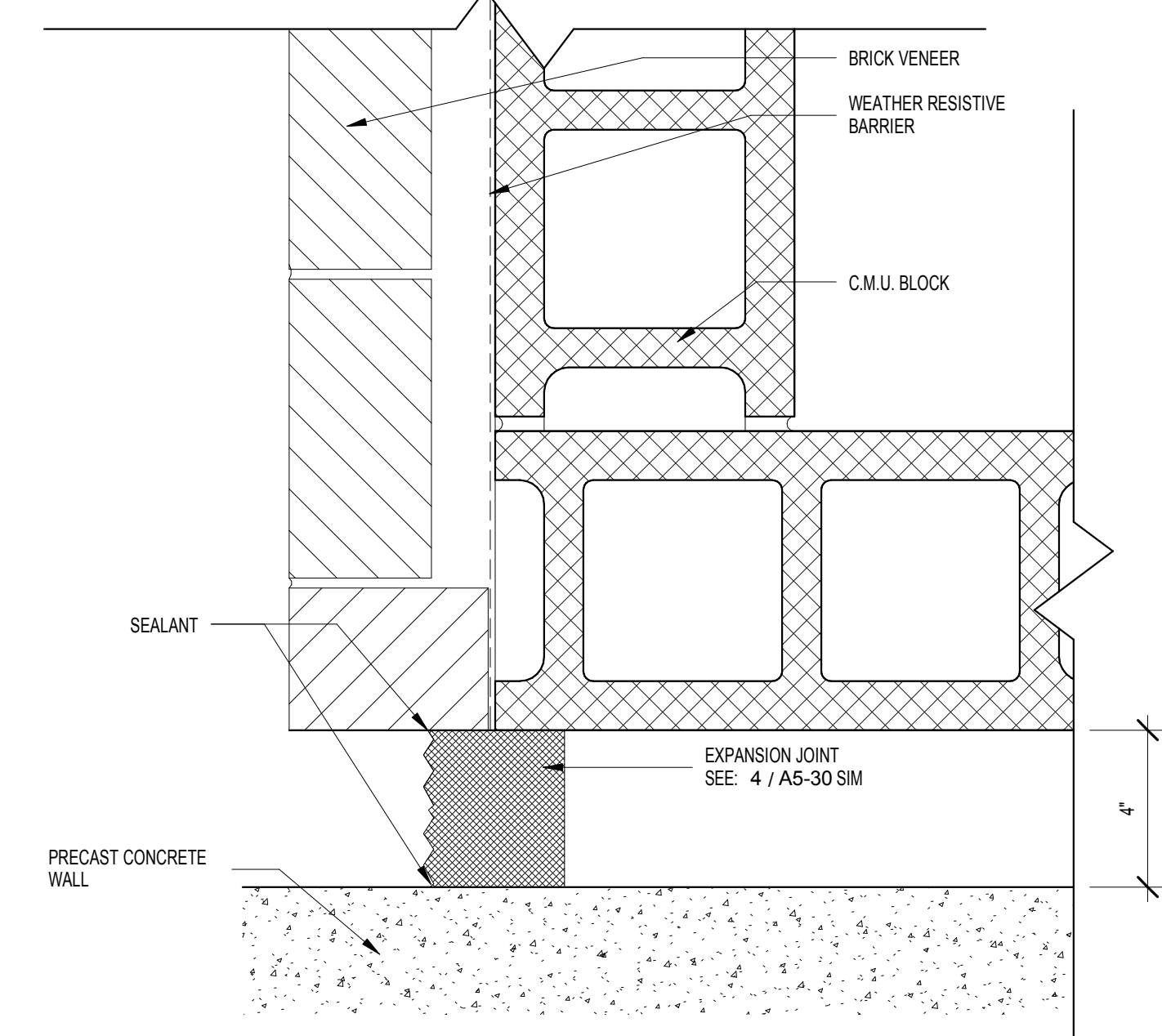
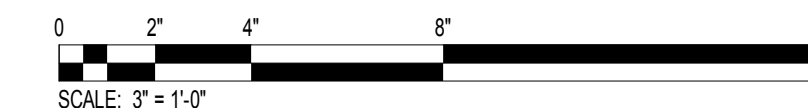
**4 BRICK TO CEMENTITIOUS PANEL DETAIL 2**



**3 BRICK TO CEMENTITIOUS PANEL DETAIL 1**



**2 BRICK TO BRICK DETAIL**



**1 BRICK ON C.M.U.**

