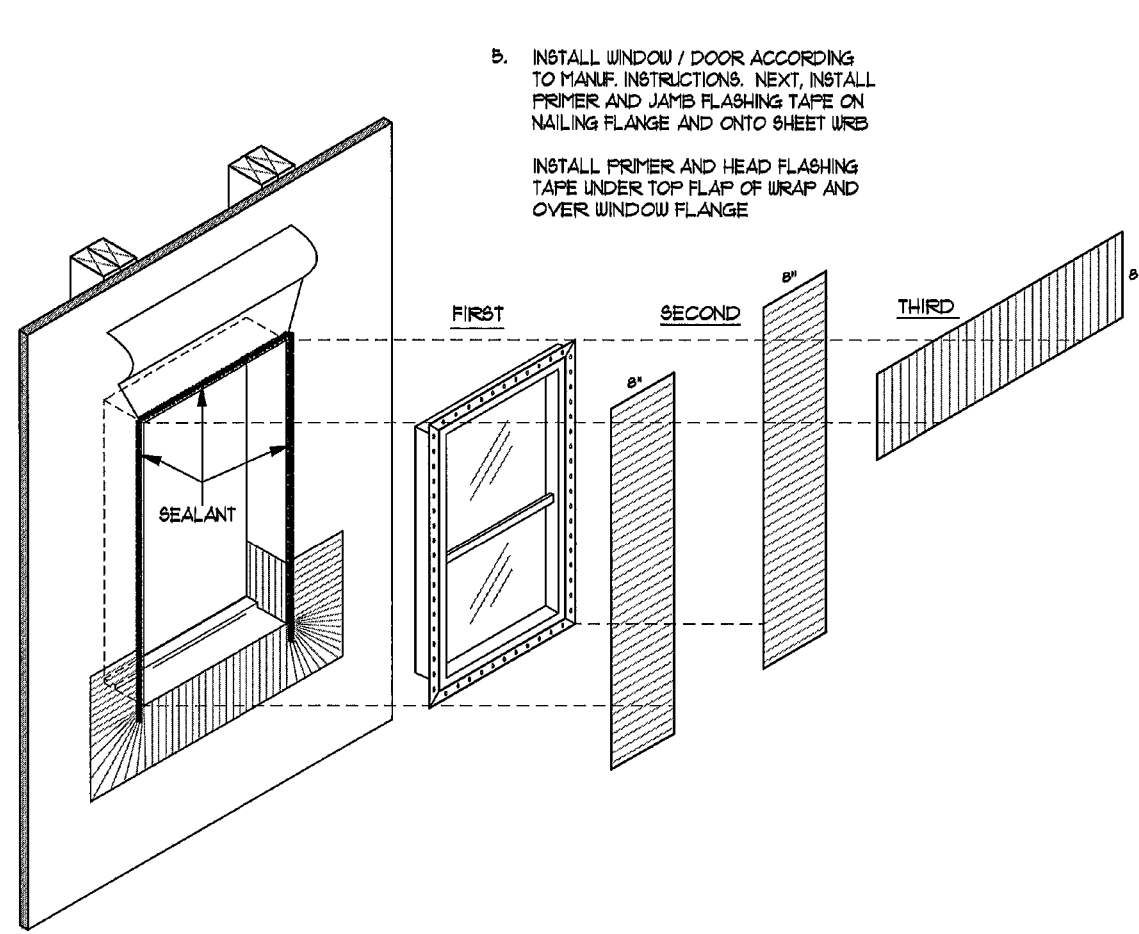
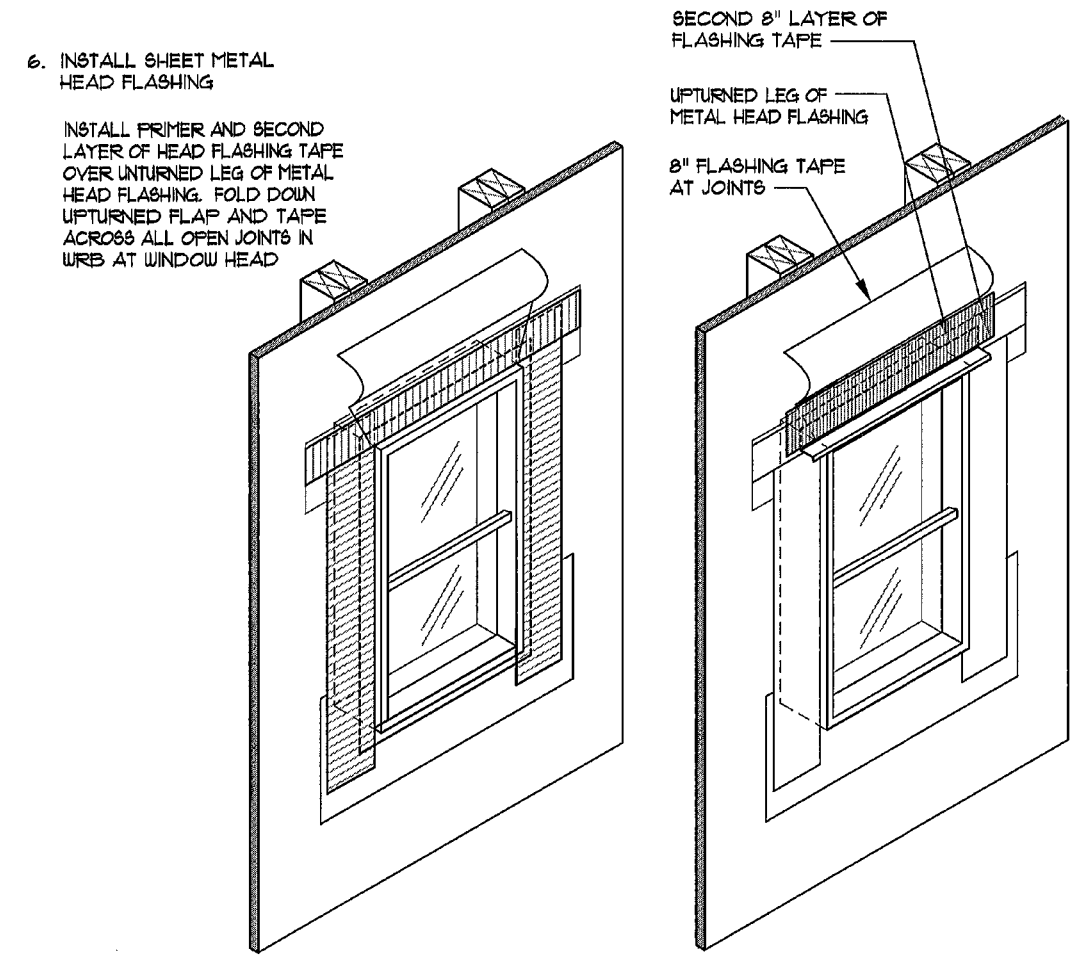
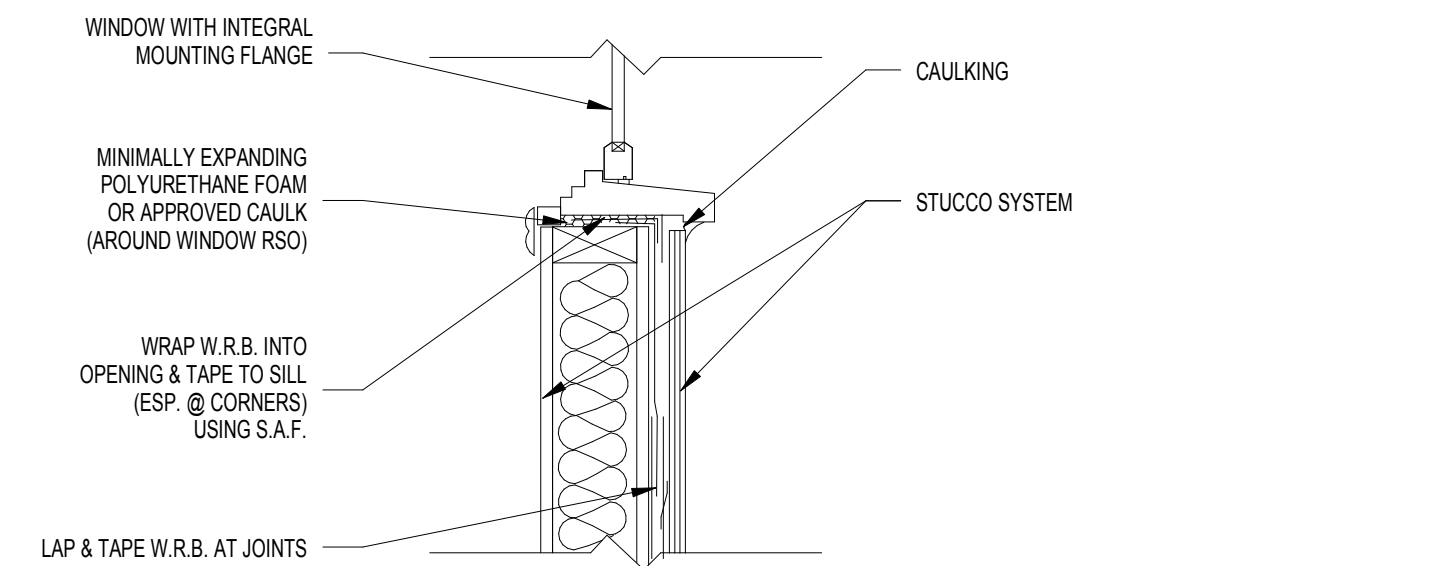
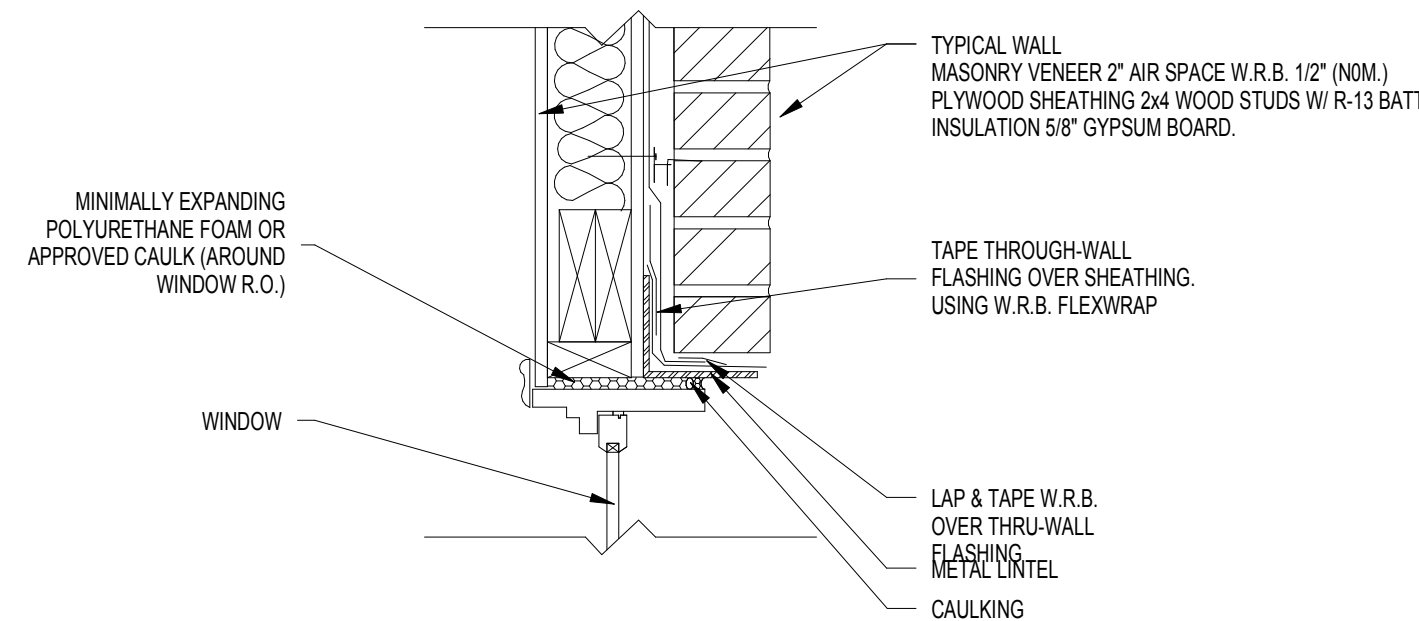


REVISION SUMMARY #5
A. ADDED DETAIL



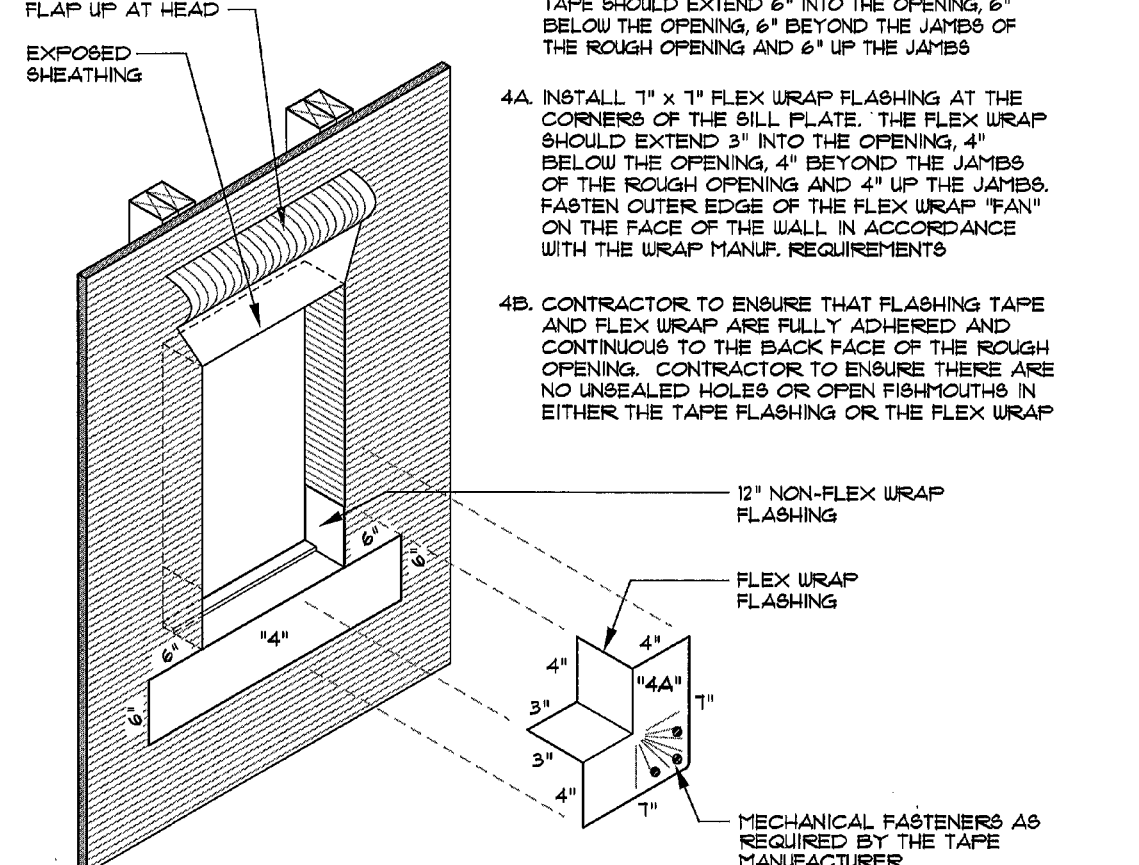
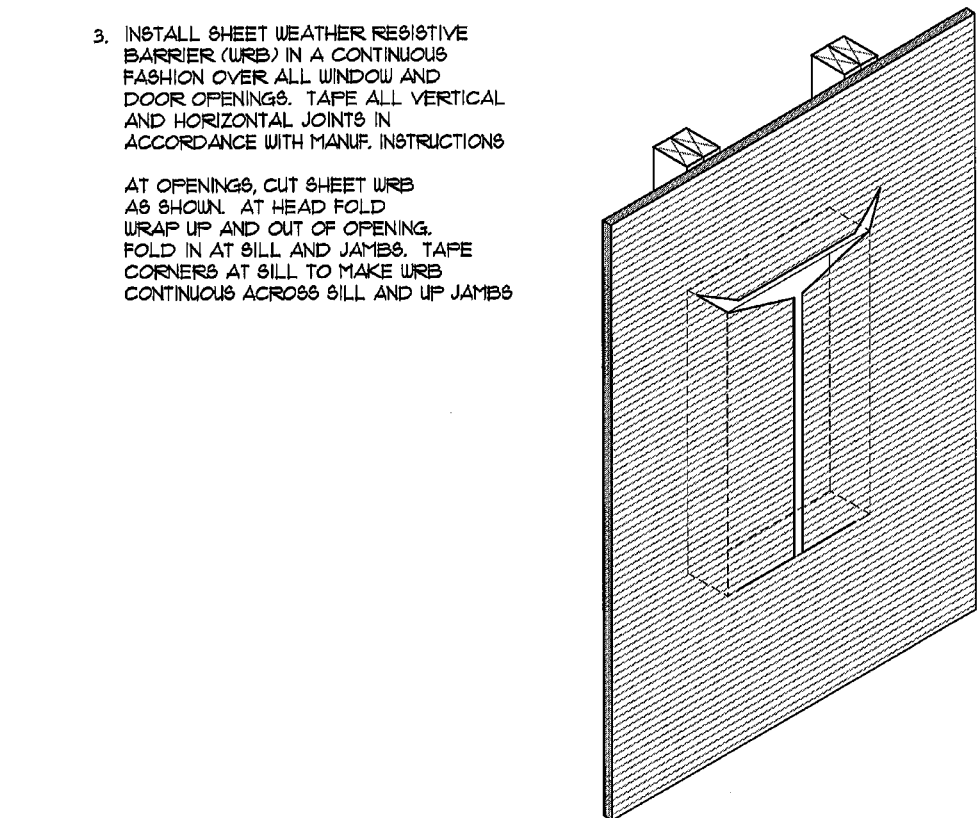
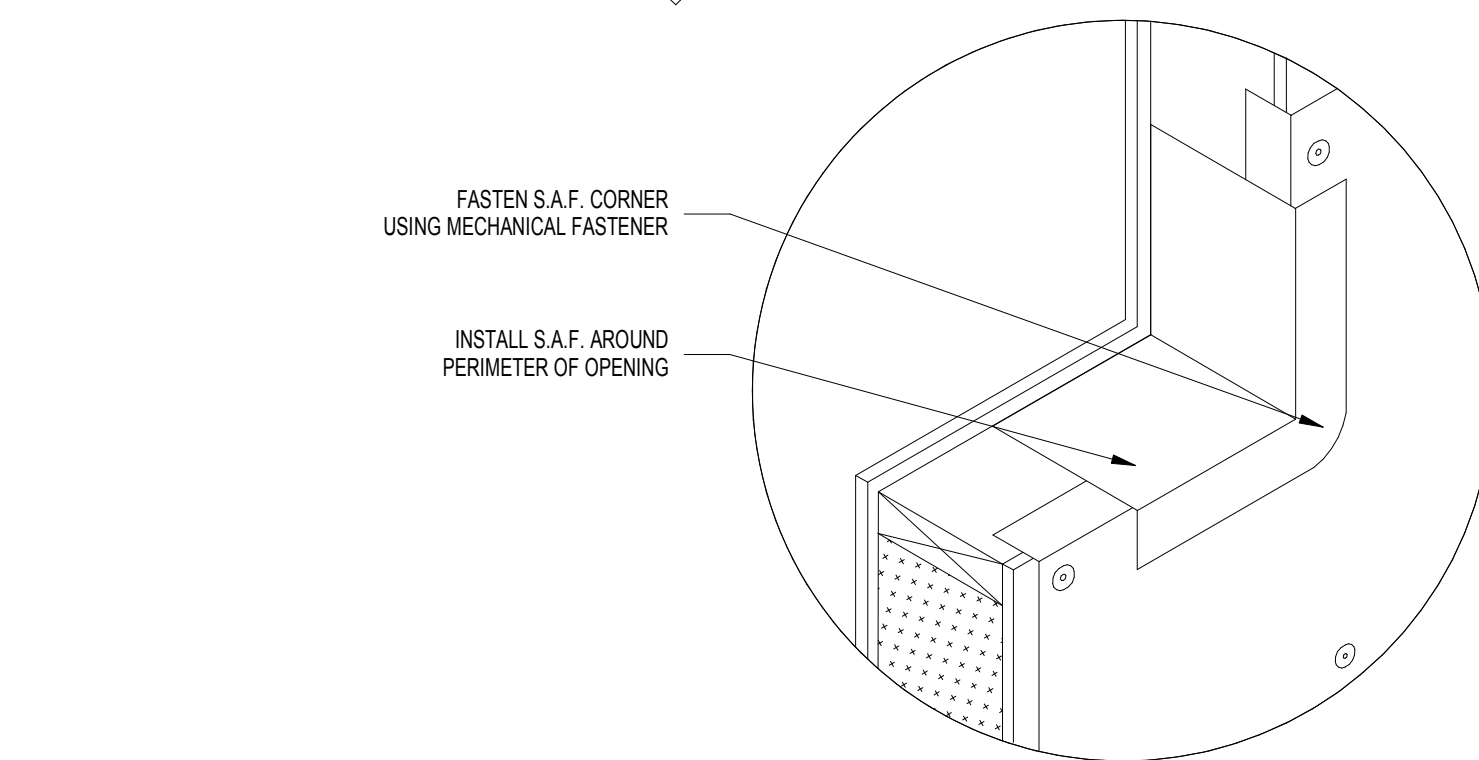
WINDOW HEAD DETAIL - MASONRY VENEER

SCALE: 1" = 1'-0"



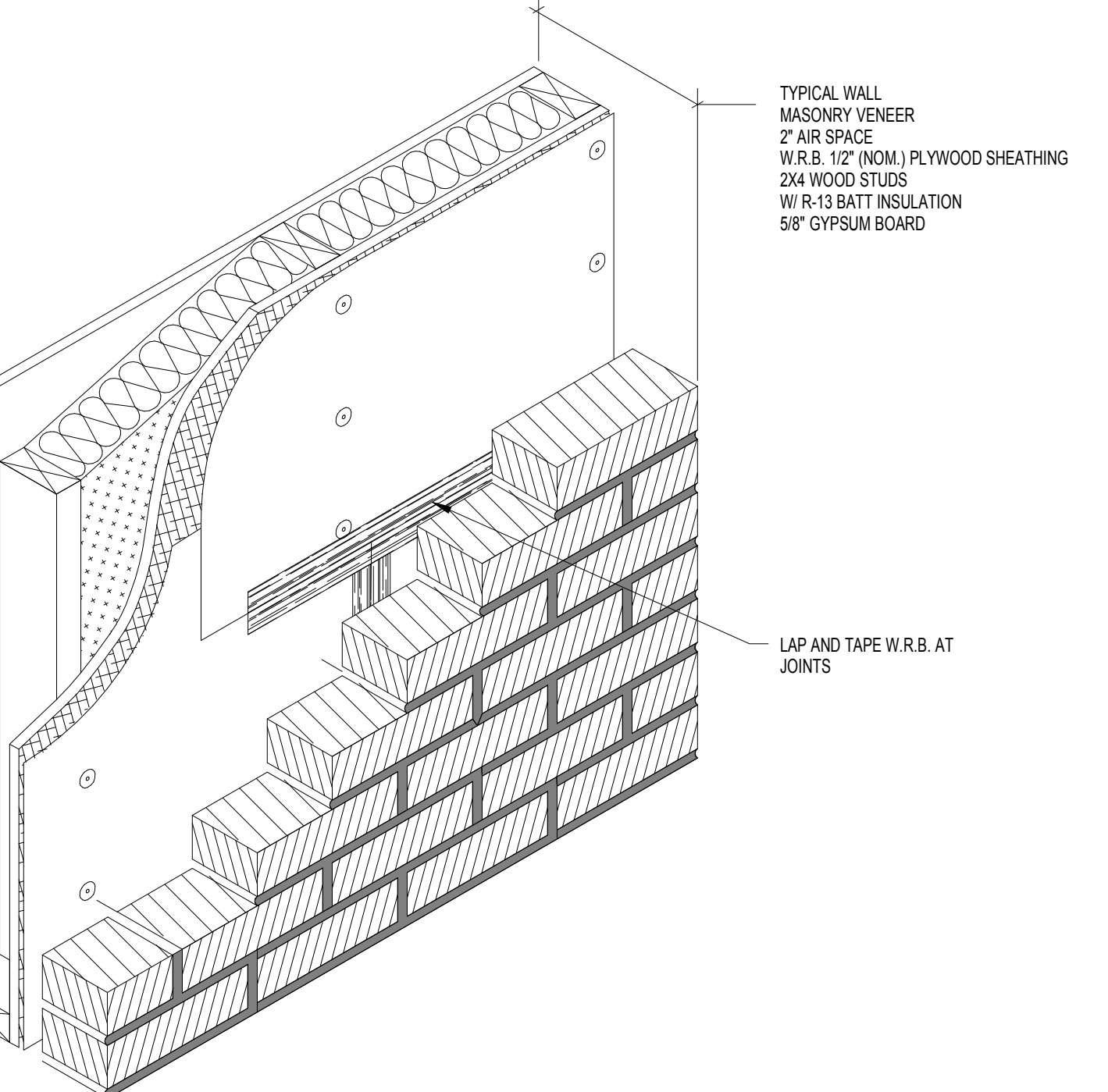
WINDOW SILL DETAIL - STUCCO

SCALE: 1" = 1'-0"



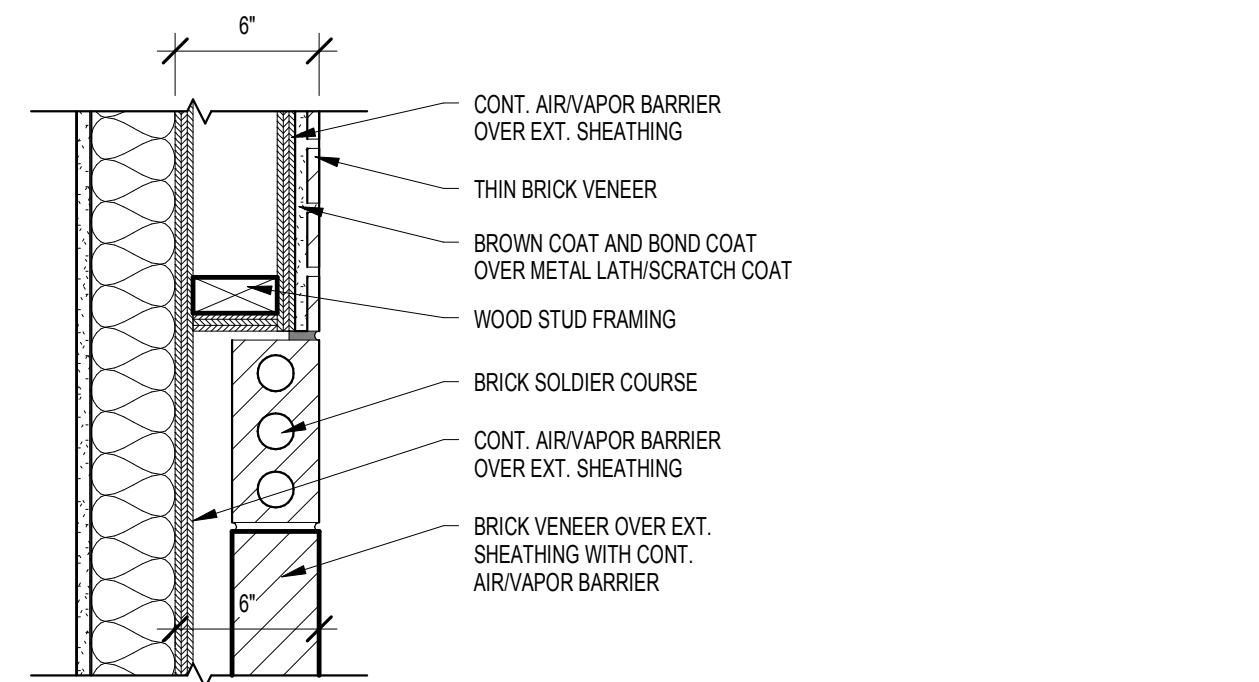
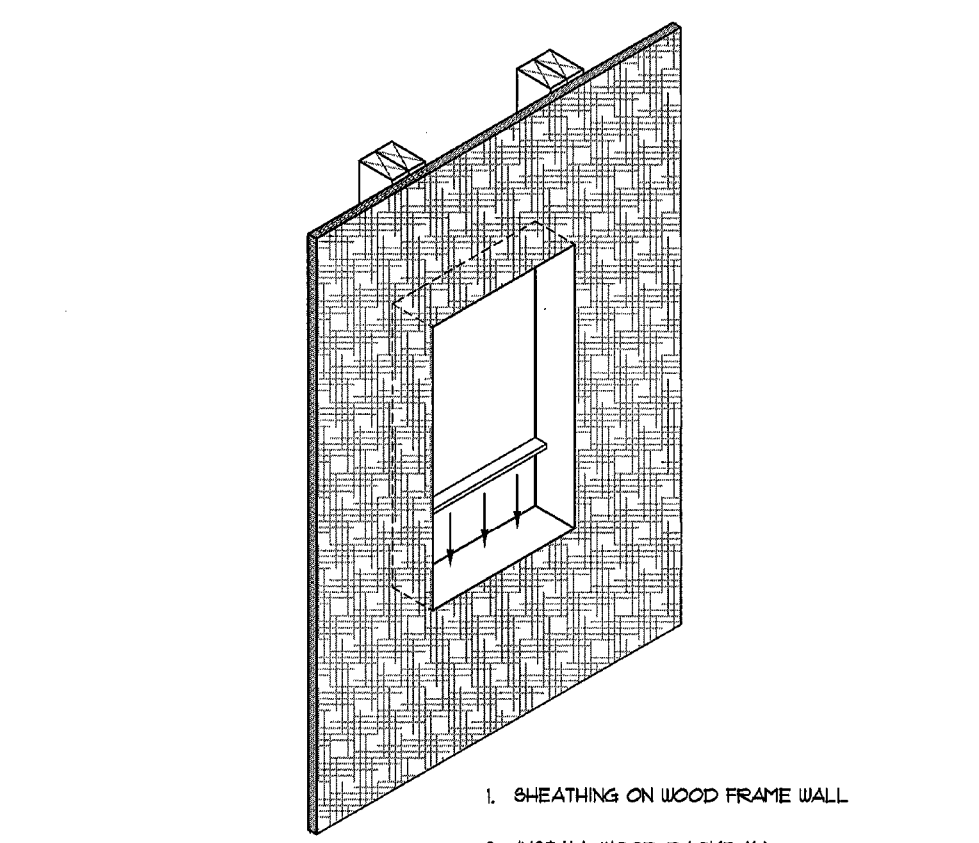
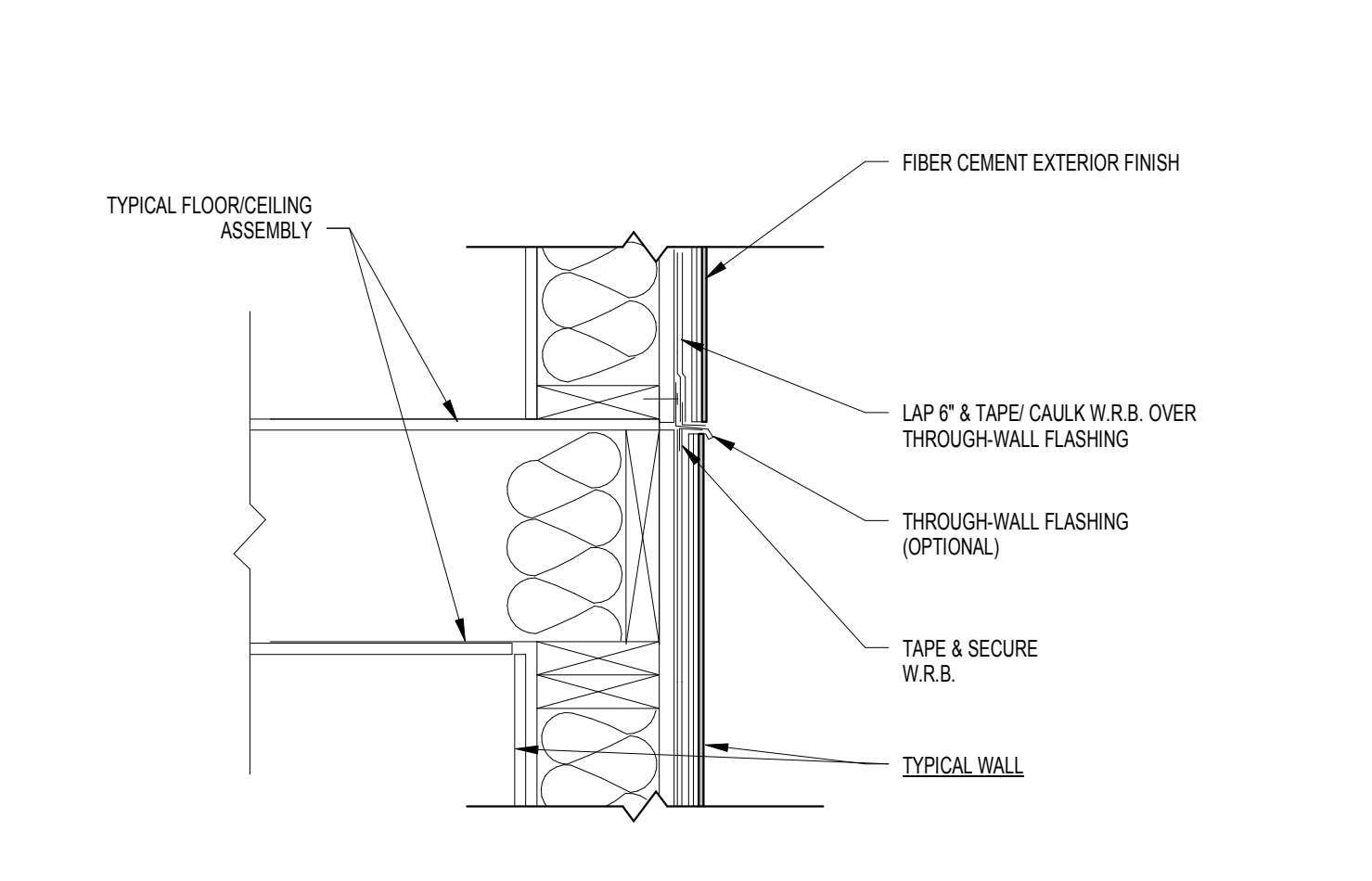
WINDOW SILL DETAIL - MASONRY VENEER

SCALE: 1" = 1'-0"



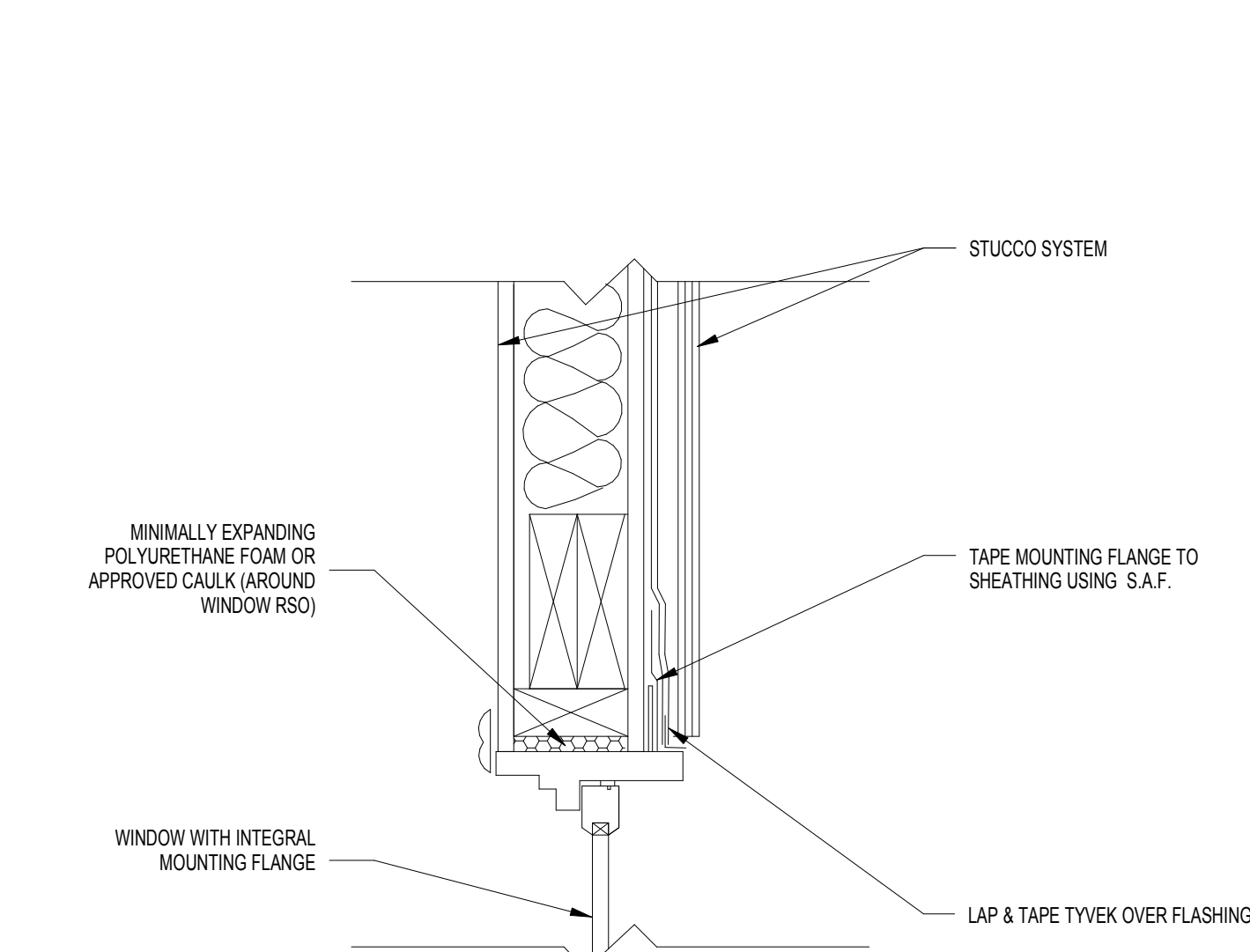
FLOOR AND WALL INTERFACE DETAIL - MASONRY VENEER

SCALE: 1" = 1'-0"



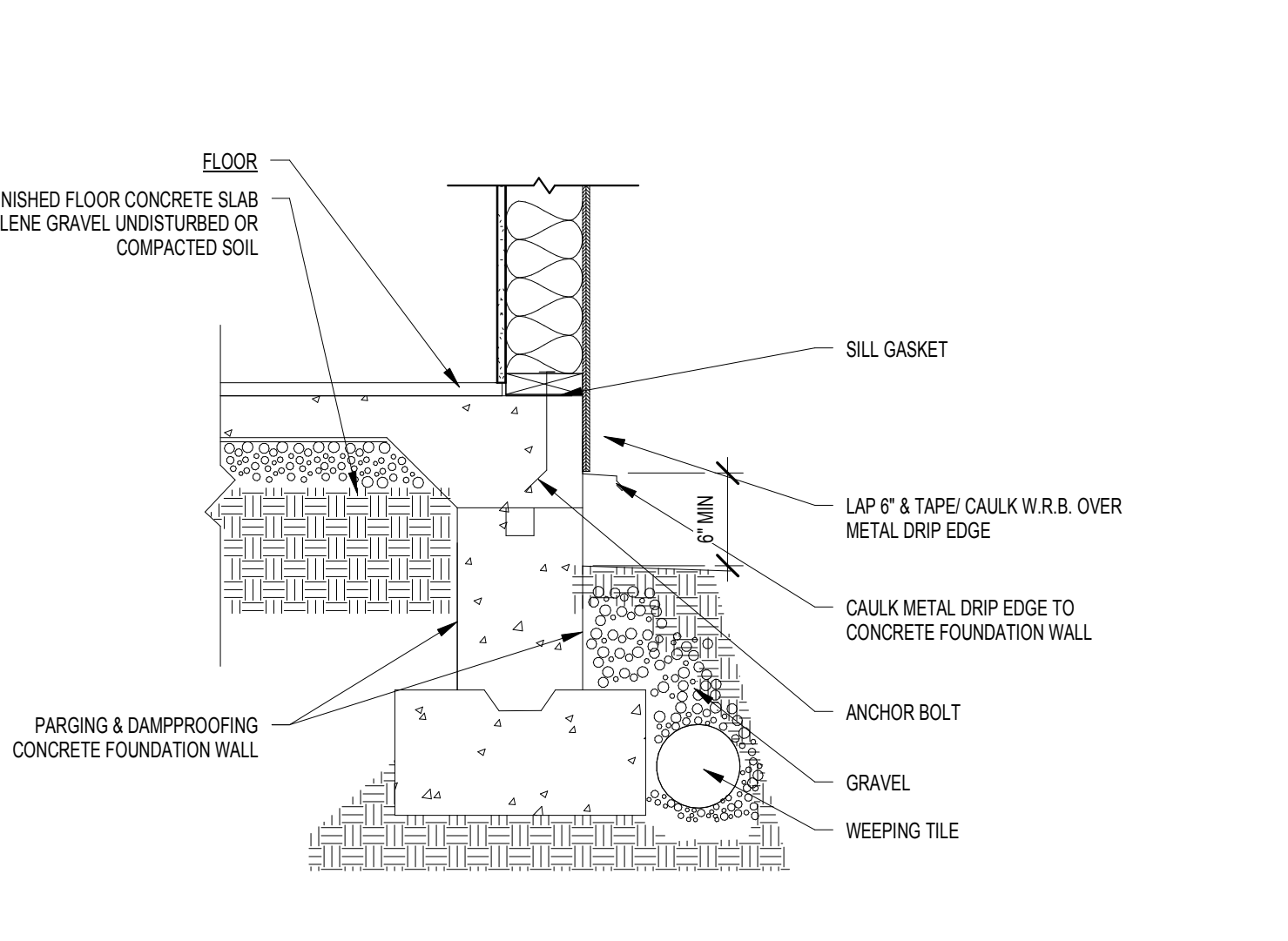
TYPICAL WALL ISOMETRIC - MASONRY VENEER

SCALE: 1" = 1'-0"



FLOOR AND WALL INTERFACE DETAIL - FIBER CEMENT

SCALE: 1" = 1'-0"



WINDOW WATERPROOFING ISOMETRICS

SCALE: 1/8" = 1'-0"



THIN BRICK TRANSITION PLAN DETAIL

SCALE: 1 1/2" = 1'-0"



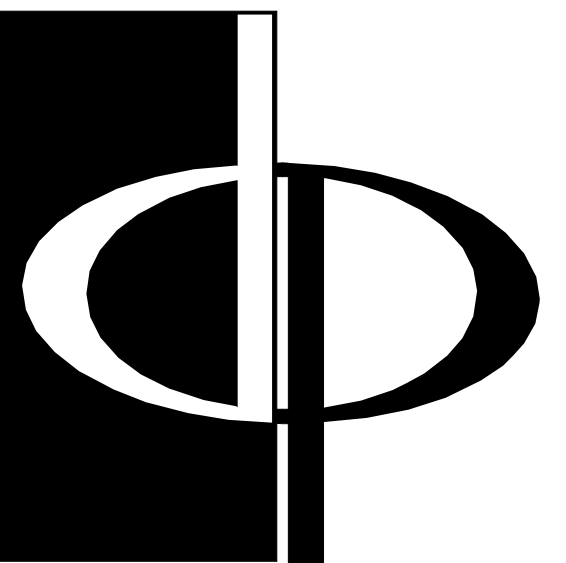
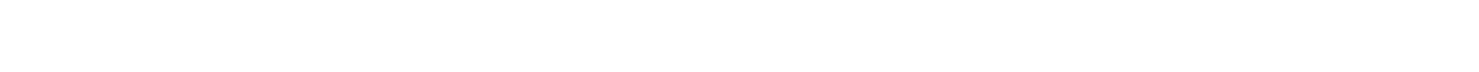
WINDOW HEAD DETAIL - STUCCO

SCALE: 1 1/2" = 1'-0"



BASE OF WALL DETAIL - BRICK VENEER

SCALE: 1" = 1'-0"



THE PRESTON
PARTNERSHIP, LLC
A MULTI-DISCIPLINARY DESIGN FIRM

SOUTH TERRACES
115 PERIMETER CENTER PLACE, SUITE 950
ATLANTA, GEORGIA 30346
TELEPHONE: 770 396 7248
FAX: 770 396 2945

WWW.THEPRESTONPARTNERSHIP.COM

CONSULTANT

SEAL



PROJECT

RESERVE AT THE
BALLPARK, PHASE II,
AKA REVEL AT THE
BALLPARK
2885 CRESCENT PKWY
SMYRNA, GA 30080

FOR



ATLANTIC REALTY
PARTNERS

3438 PEACHTREE ROAD
SUITE 1425
ATLANTA, GA 30326

ISSUES & REVISIONS

ISSUES & REVISIONS	DATE
CONCEPTUAL DESIGN	08/21/2015
SCHEMATIC DESIGN	09/28/2015
CM/DESIGN DEVELOPMENT	10/15/2015
GMP	04/03/2017
PERMIT SET	05/22/2017
3. BUILDING PERMIT	07/25/2017
5. BUILDING PERMIT	10/02/2017
COMMENTS / COORDINATION	

DATE

05/22/2017

JOB NUMBER

1493101

DRAWN BY

NP

CHECKED BY

PA

SHEET TITLE

WEATHER RESISTIVE BARRIER

DETAILS

SHEET NUMBER

A5-40

COMMENTS

BUILDING PERMIT RE-SUBMISSION

30X42

© 2017 The Preston Partnership, LLC