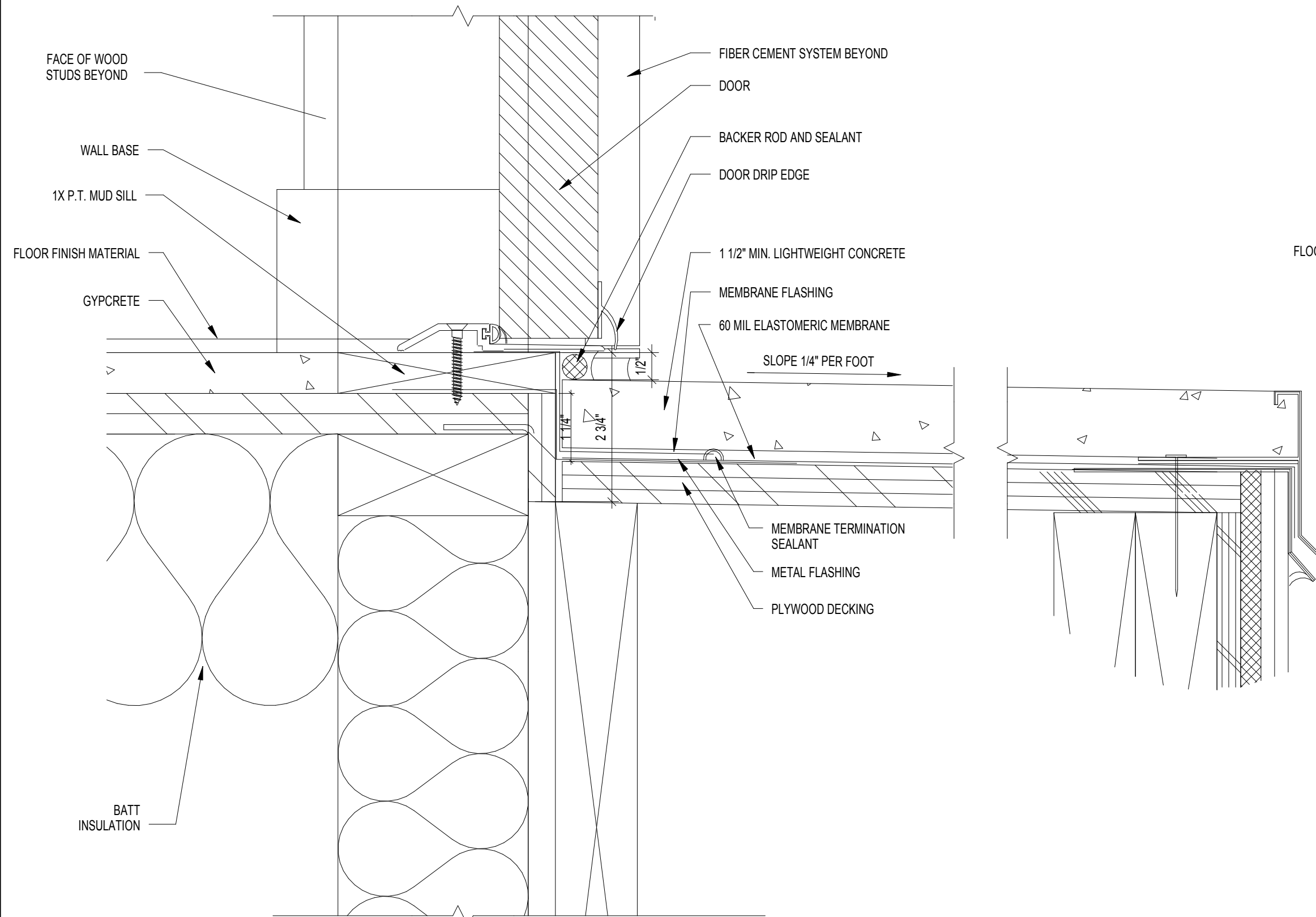
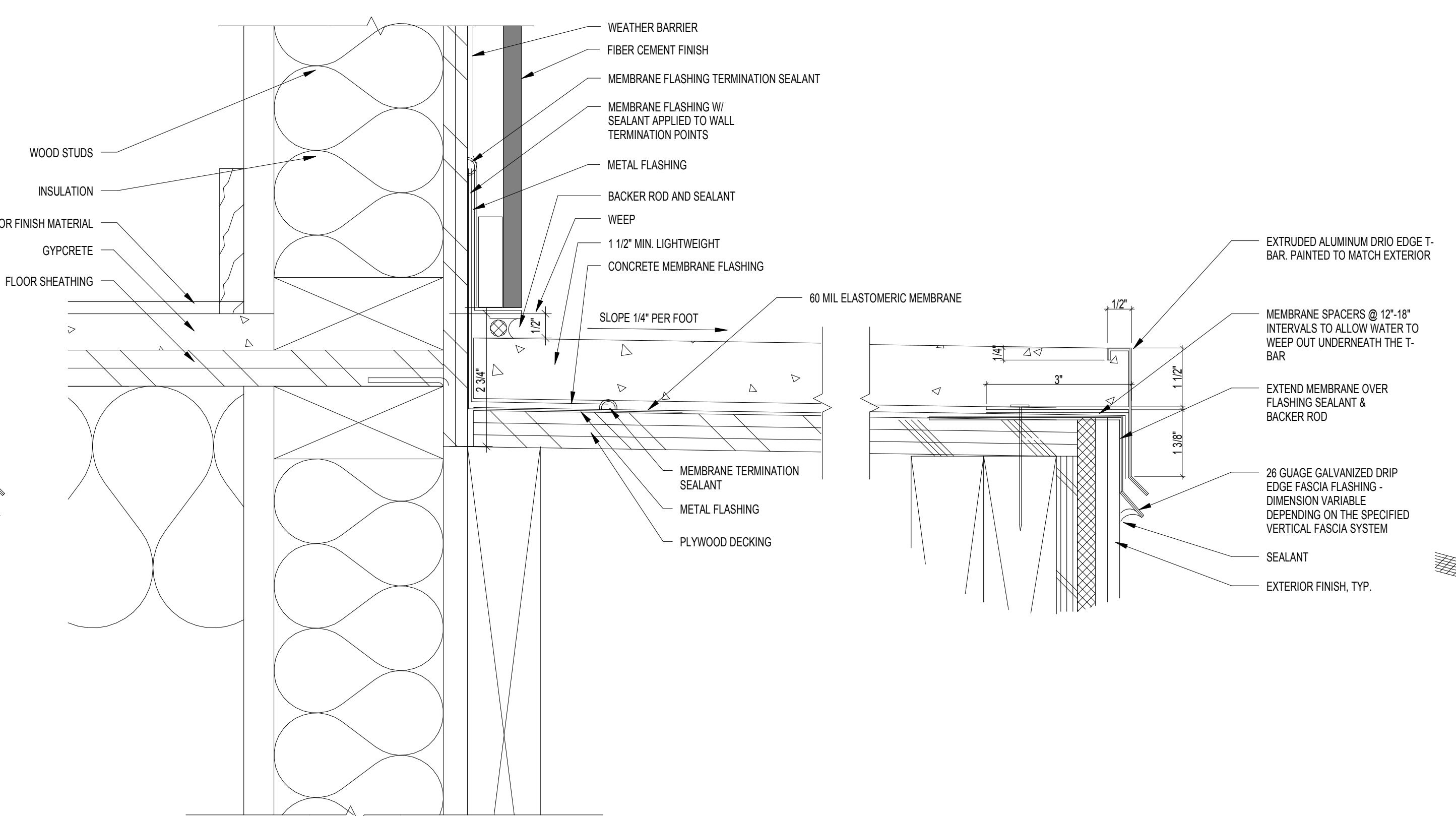


7 BALCONY EDGE FLASHING ISOMETRICS
SCALE: 3" = 1'-0"

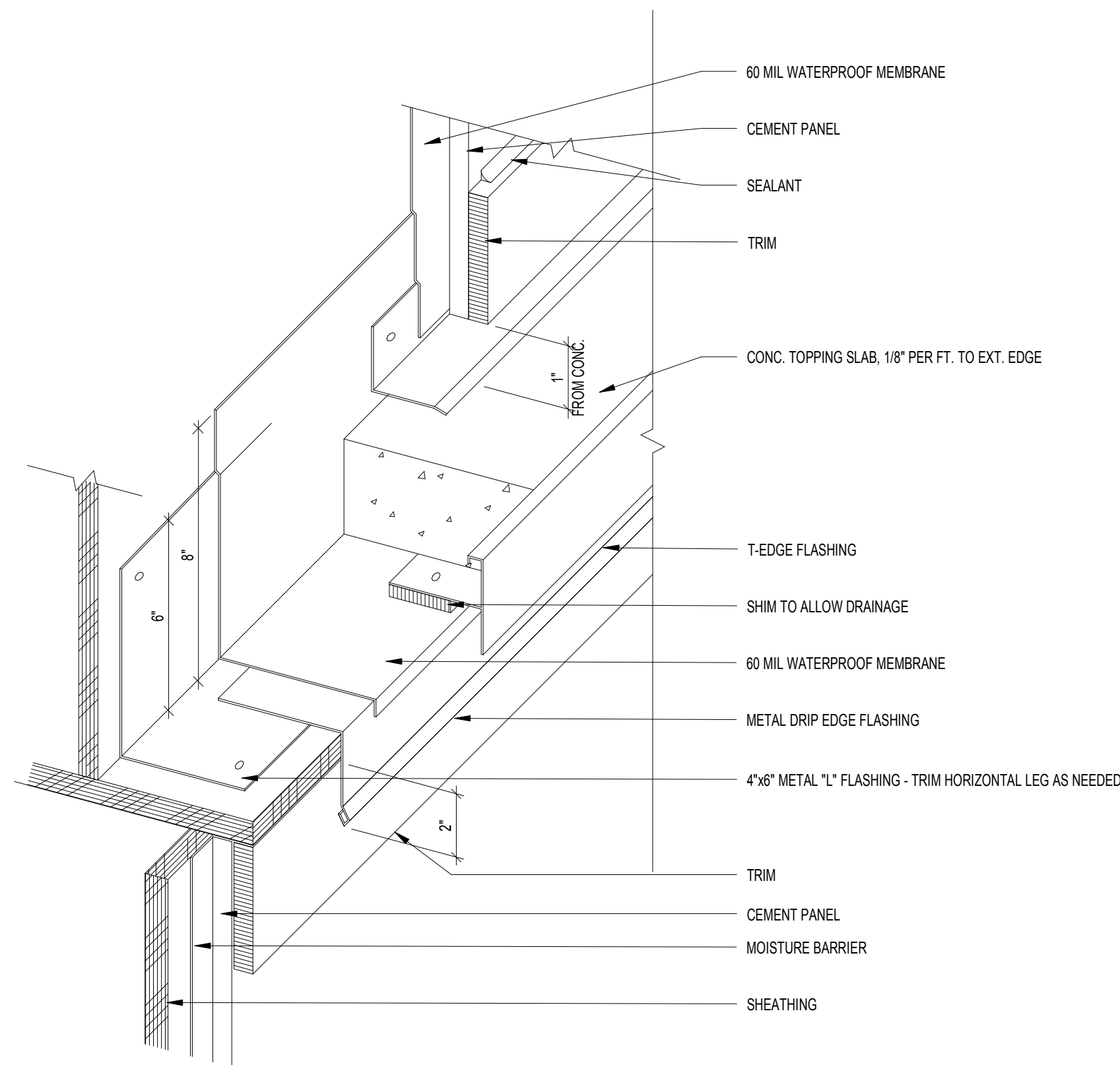


8 FLASHING AT BALCONY DOOR
SCALE: 6" = 1'-0"

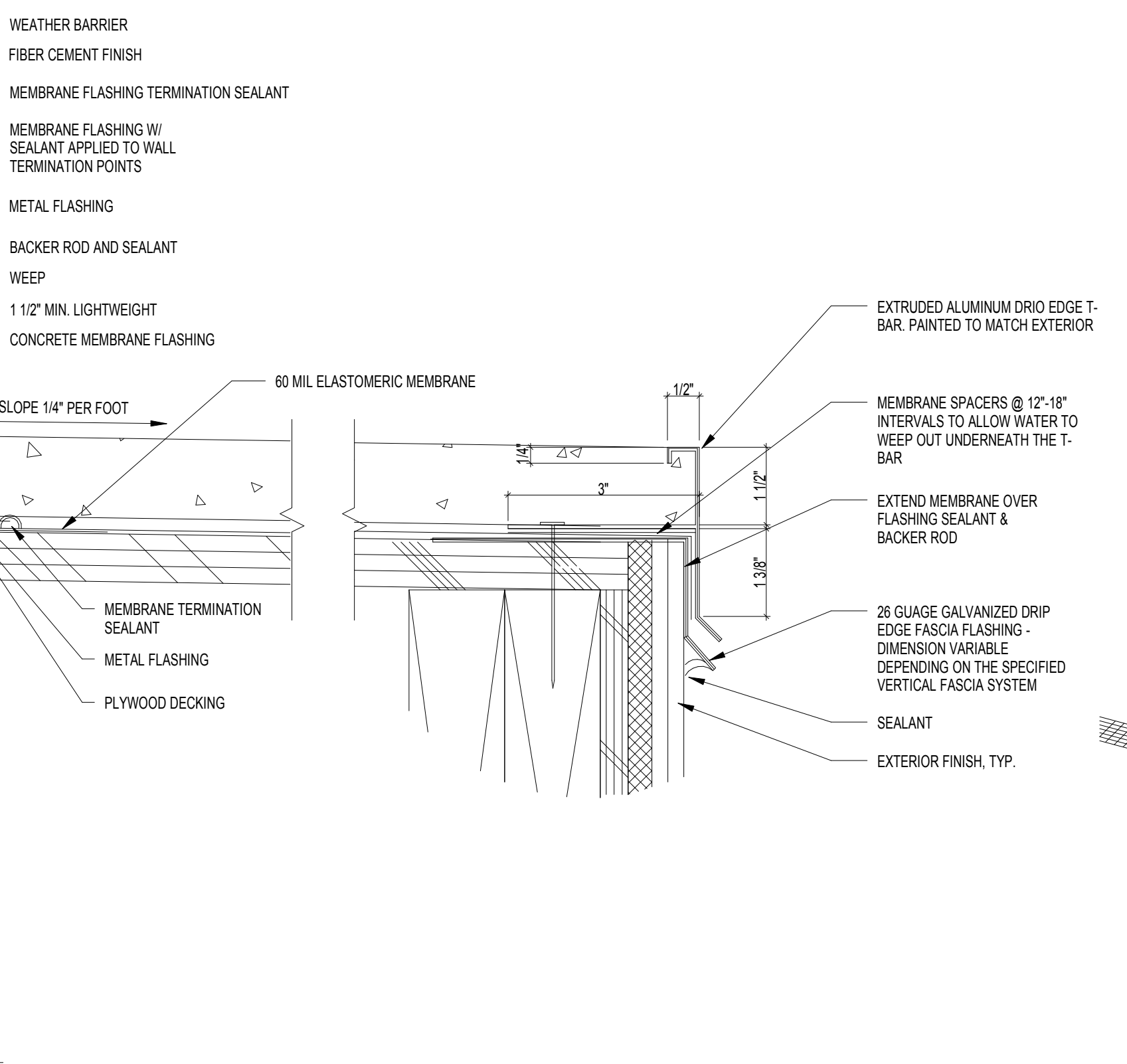


6 BALCONY FLASHING @ WALL
SCALE: 6" = 1'-0"

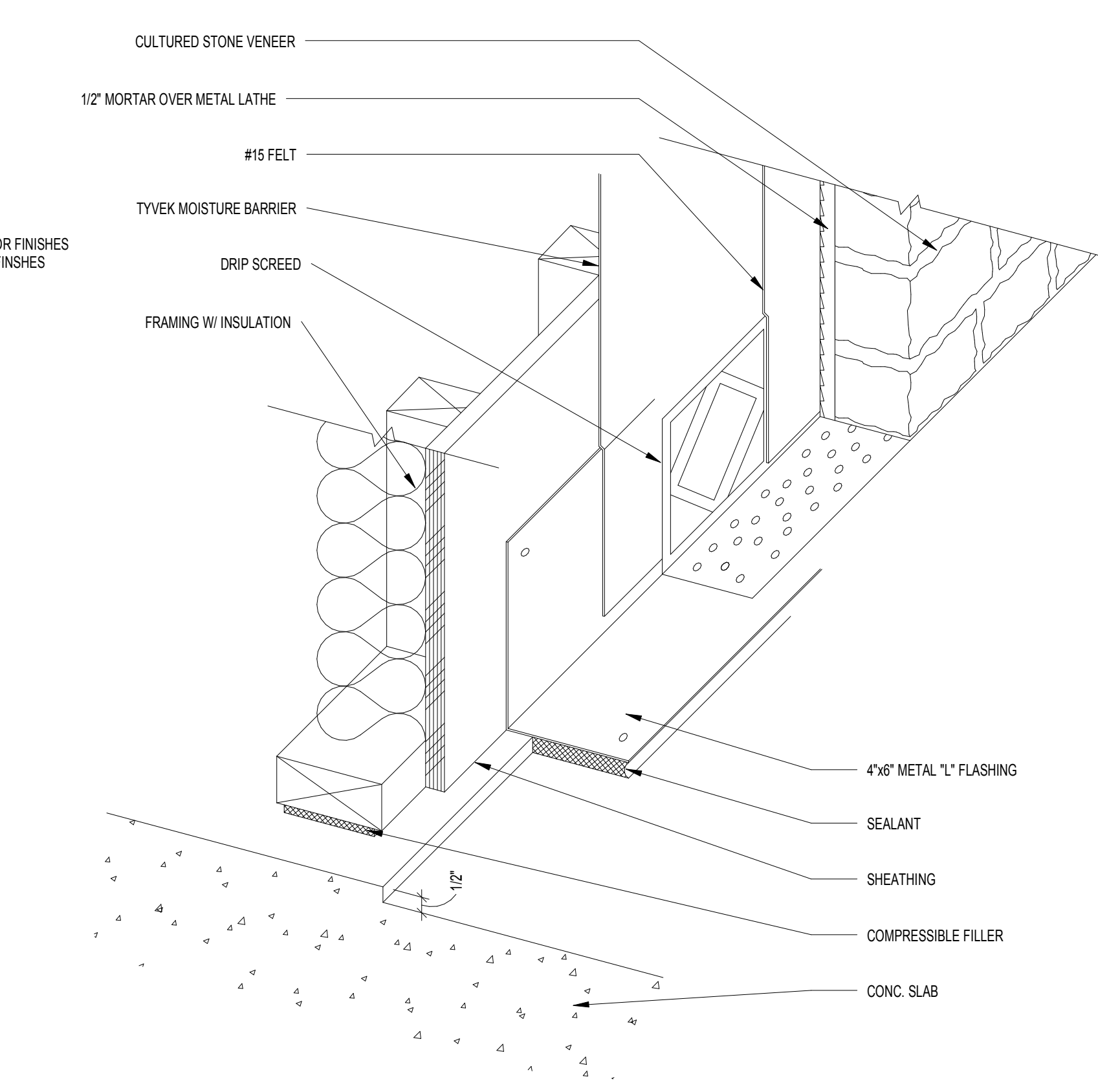
5 BALCONY FLASHING @ BRICK
SCALE: 3" = 1'-0"



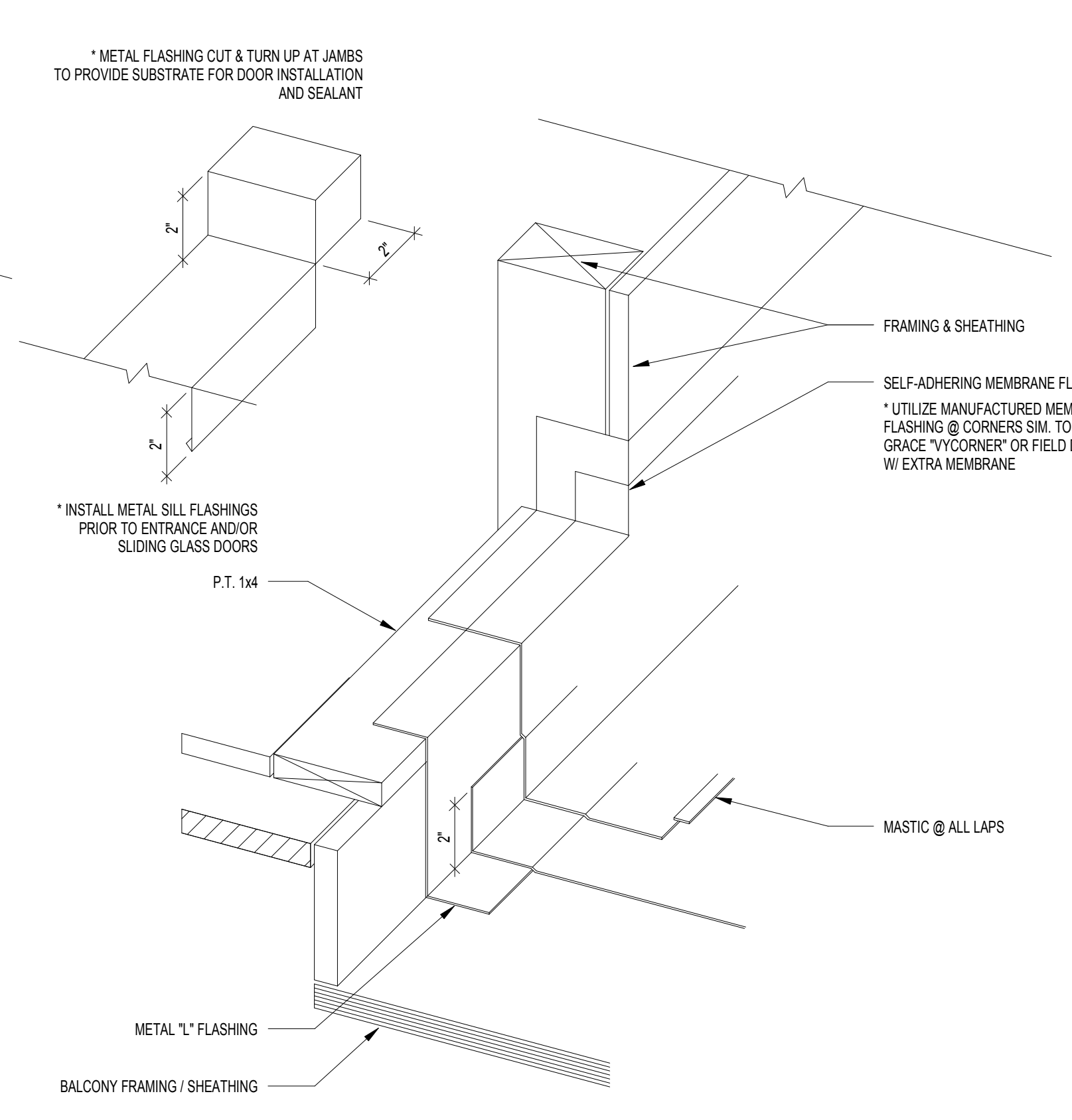
4 BALCONY FLASHING @ PANELS
SCALE: 3" = 1'-0"



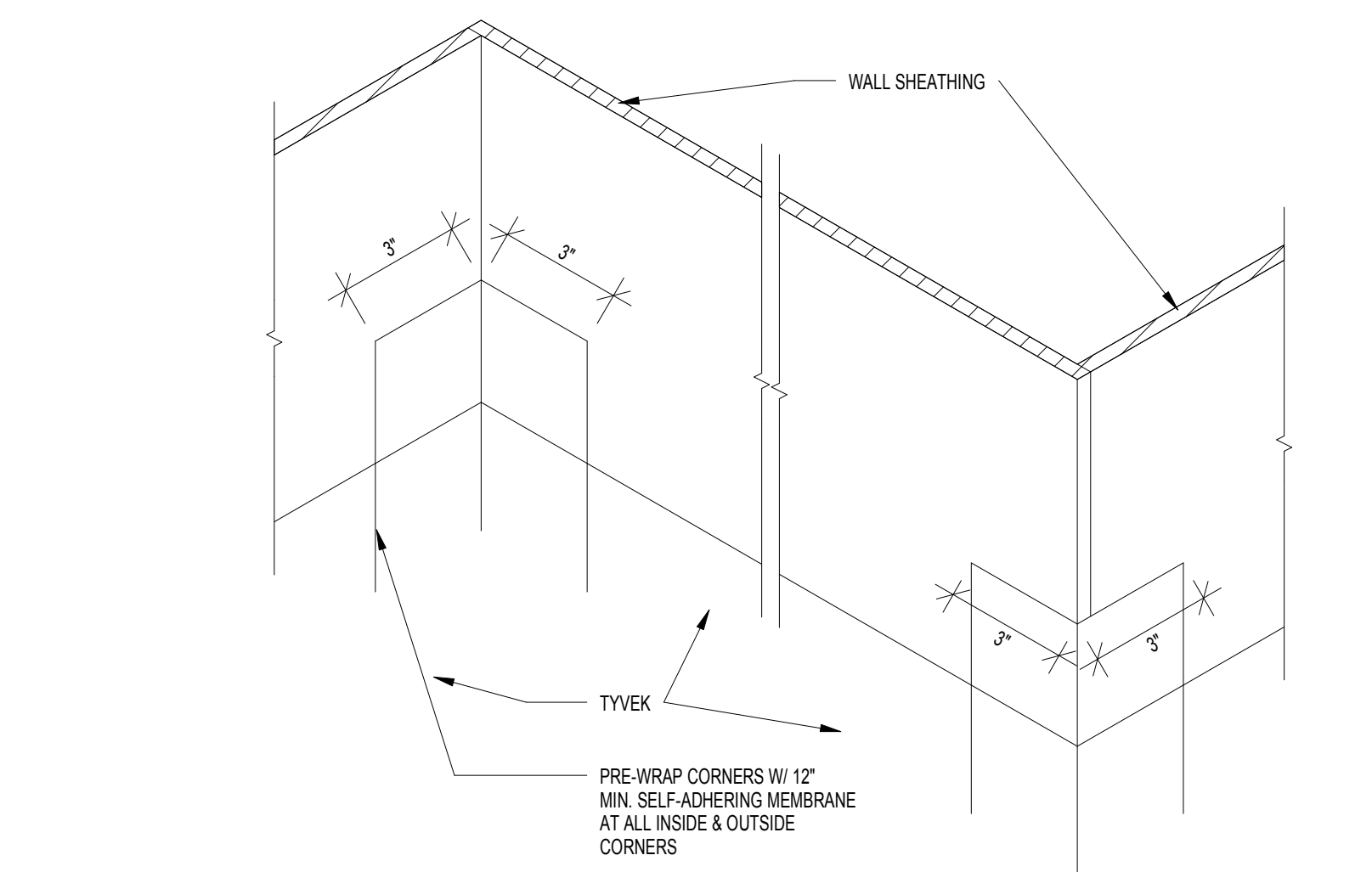
1 BALCONY FLASHING @ EDGE
SCALE: 3" = 1'-0"



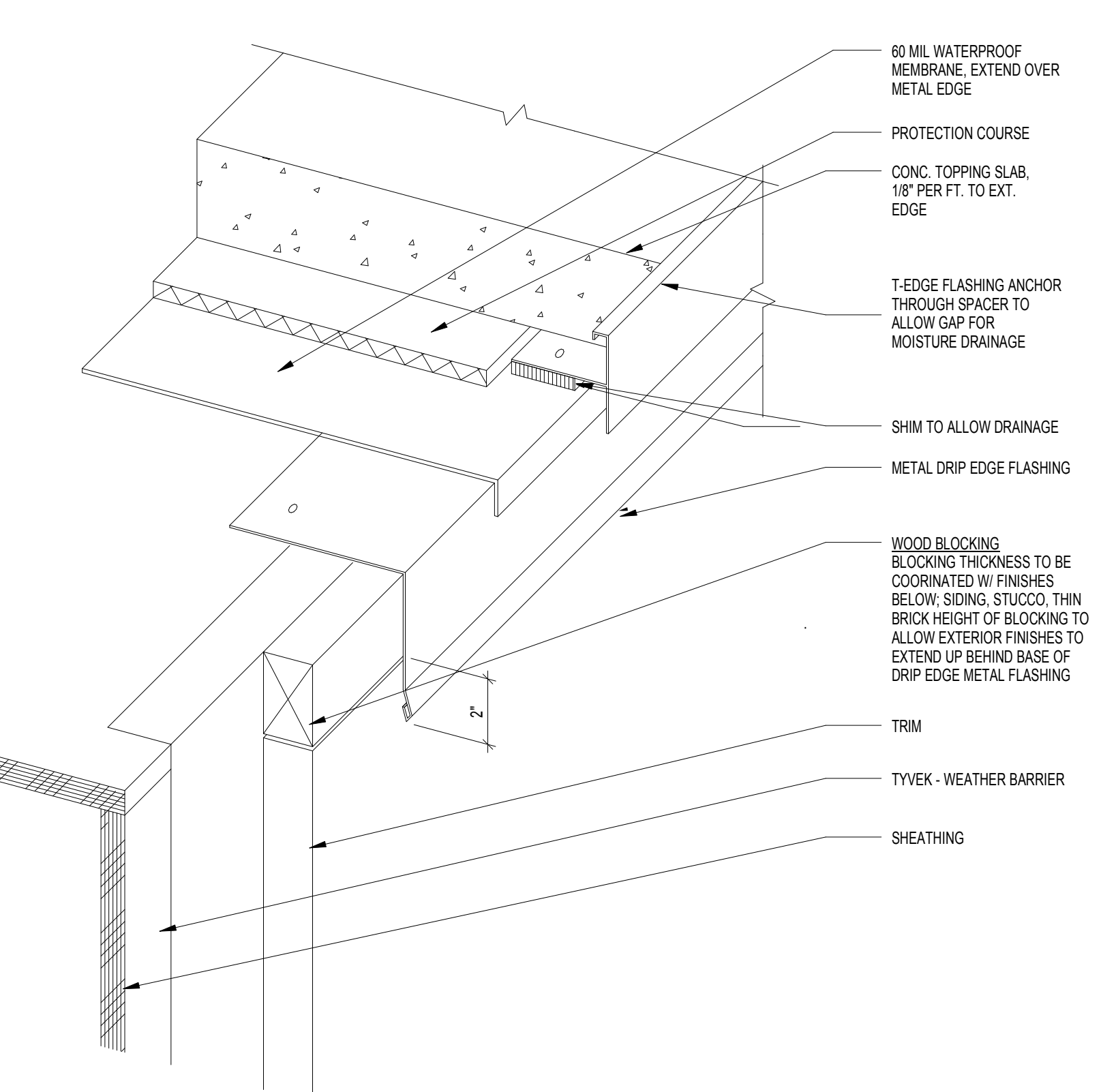
5 BALCONY FLASHING @ BRICK
SCALE: 3" = 1'-0"



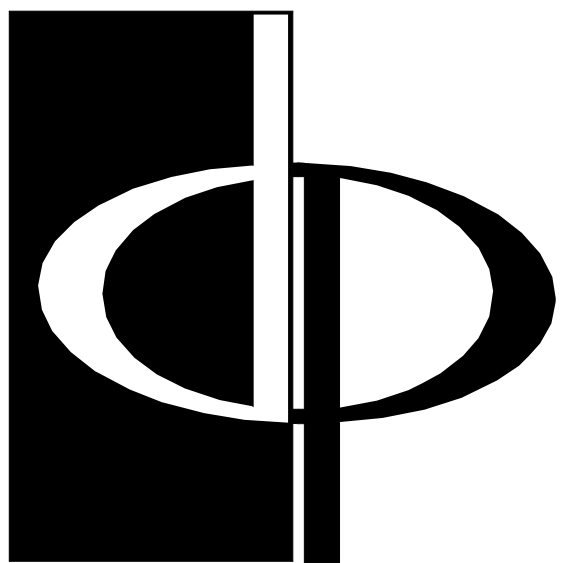
3 BALCONY FLASHING @ DOOR THRESHOLD
SCALE: 3" = 1'-0"



2 WATERPROOFING AT WALL CORNERS
SCALE: 3" = 1'-0"



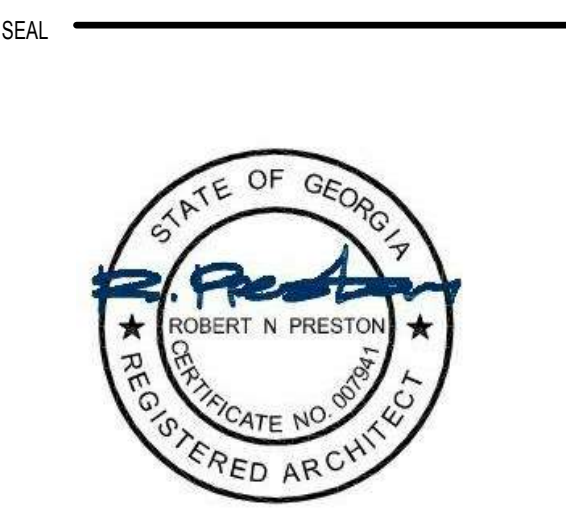
1 BALCONY FLASHING @ EDGE
SCALE: 3" = 1'-0"



THE PRESTON PARTNERSHIP, LLC
A MULTI-DISCIPLINARY DESIGN FIRM

SOUTH TERRACES
115 PERIMETER CENTER PLACE, SUITE 950
ATLANTA, GEORGIA 30346
TELEPHONE: 770 396 7248
FAX: 770 396 2945

WWW.THEPRESTONPARTNERSHIP.COM
CONSULTANT



PROJECT
RESERVE AT THE BALLPARK, PHASE II, AKA REVEL AT THE BALLPARK
2885 CRESCENT PKWY
SMYRNA, GA 30080



ATLANTIC REALTY PARTNERS
3438 PEACHTREE ROAD
SUITE 1425
ATLANTA, GA 30326

ISSUES & REVISIONS	DATE
CONCEPTUAL DESIGN	08/21/2015
SCHEMATIC DESIGN	09/28/2015
CM/CD DESIGN DEVELOPMENT	10/15/2015
GMP	04/03/2017
PERMIT SET	05/22/2017
3. BUILDING PERMIT	07/25/2017

DATE: **05/22/2017**
JOB NUMBER: **1493101**
DRAWN BY: **NP**
CHECKED BY: **PA**
SHEET TITLE: **BALCONY AND FLASHING DETAILS**
SHEET NUMBER: **A5-41**

COMMENTS: **BUILDING PERMIT RE-SUBMISSION**

30X42 © 2017 The Preston Partnership, LLC