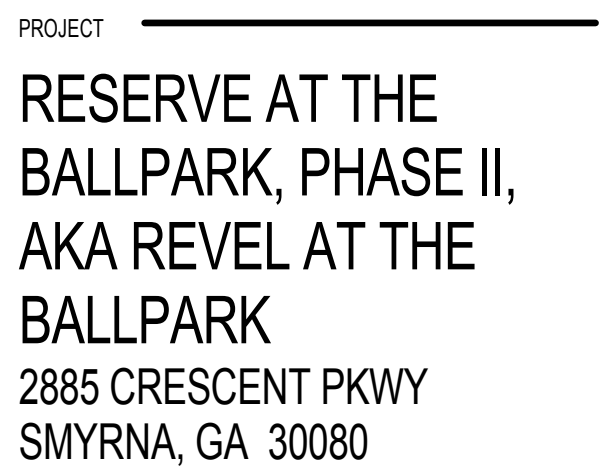


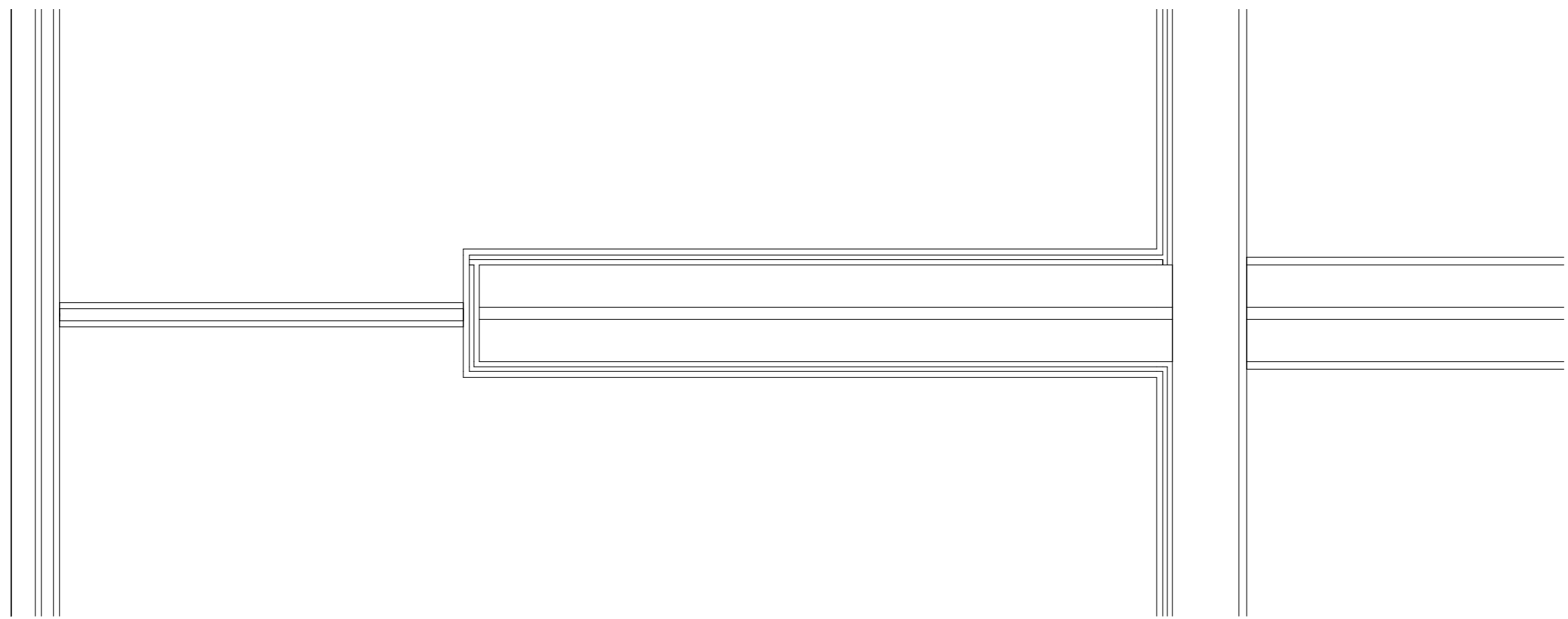
WWW.THEPRESTONPARTNERSHIP.COM
CONSULTANT



DATE 05/22/2017
JOB NUMBER 1493101
DRAWN BY NB
CHECKED BY CW
SHEET TITLE ENLARGED PLAN DETAILS

A6-61

30X42 © 2017 The Preston Partnership, LLC



Architectural section drawing of a wall and ceiling assembly. The drawing shows a vertical section of a wall with a staircase on the left and a corridor on the right. The wall assembly includes a concrete masonry unit (C.M.U.) core, wood furring, weather-resistant barrier, and fiber cement panels. The ceiling assembly includes wood furring, weather-resistant barrier, and fiber cement panels. The drawing is labeled with dimensions and material specifications.

Labels and dimensions:

- 7 5/8"
- 2"
- 7 5/8"
- 8" C.M.U.
- AIR GAP
- 8" C.M.U.
- WOOD FURRING
- WEATHER RESISTIVE BARRIER
- FIBER CEMENT PANEL W/ REVEAL SYSTEM
- TRASH RAIL CONY
- STAIR F
- PAINTED FINISH ON INTERIOR FACE OF C.M.U.
- GYPSUM WALLBOARD
- CORRIDOR
- 208
- 186

Technical drawing showing a cross-section of a balcony railing assembly. The drawing includes labels for the following components:

- BALCONY RAILING
- SLAB EDGE
- EXTERIOR SHEATHING
- WEATHER RESISTIVE BARRIER
- WOOD FURRING @ 18" O.C.
- FIBER CEMENT PANEL W/ REVEAL SYSTEM
- AIR GAP
- GYPSUM WALL BOARD

Dimensions are indicated:

- 5' 1 1/2" (vertical dimension on the left)
- 5' 1 1/2" (horizontal dimension at the top)
- 5' 1 1/2" (vertical dimension at the bottom)

Other labels include:

- BALCONY
- UNIT
- UNIT

Architectural cross-section drawing of a building exterior wall and floor assembly. The drawing shows a vertical wall on the left and a horizontal floor assembly on the right. The wall has a vertical dimension of 2' - 4 3/8" and a horizontal dimension of 8". The floor assembly has a horizontal dimension of 7 5/8". The wall is composed of precast concrete with a sealant, expansion joint, and air gap. The floor assembly includes a parking deck, door into parking deck, and stairs. The wall is finished with precast concrete, C.M.U. blocking, exterior sheathing, weather resistive barrier, fiber cement panel w/ reveal system, wood furring, and stand pipe. The floor is finished with painted finish oil on the interior face of C.M.U. A circular detail callout '208' is shown on the wall and floor.

Labels and dimensions:

- 8"
- 2'
- 7 5/8"
- 2' - 4 3/8"
- PARKING DECK
- DOOR INTO PARKING DECK
- STAIR
- PAINTED FINISH OIL INTERIOR FACE OF C.M.U.
- 208
- 208
- SEALANT
- EXPANSION JOINT
- AIR GAP
- PRECAST CONCRETE WALL
- C.M.U. BLOCKING
- EXTERIOR SHEATHING
- WEATHER RESISTIVE BARRIER
- FIBER CEMENT PANEL W/ REVEAL SYSTEM
- WOOD FURRING
- STAND PIPE

Architectural Cross-Section Detail: Balcony/Patio Edge to Corridor

Labels:

- UNIT
- BALCONY/PATIO
- WOOD FURRING STRIPS
- FIBER CEMENT PANELS WITH REVEAL SYSTEM
- BACKER ROD AND SEALANT
- CORRIDOR
- BRICK CONTROL JOINT
- WEATHER RESISTIVE BARRIER
- BRICK VENEER
- AACRON BLOCKING
- AIR GAP
- FIRE RESISTANT TREATED SHEATHING
- BALCONY RAILING
- BALCONY E.O.S.

Dimensions:

- Vertical dimensions: 2'-0" (balcony depth), 5'-0" (balcony height), 2'-0" (corridor depth), 2'-5 1/2" (total corridor height).
- Horizontal dimensions: 5 1/2" (balcony width), 4" (reveal width), 5 1/2" (balcony width), 1" (backer rod), 1'-5" (total width), 1" (backer rod).

1 BUILDING 1000&2000 - LEVEL 2

0 6' 1' 2' 4'

SCALE: 1" = 1'-0"