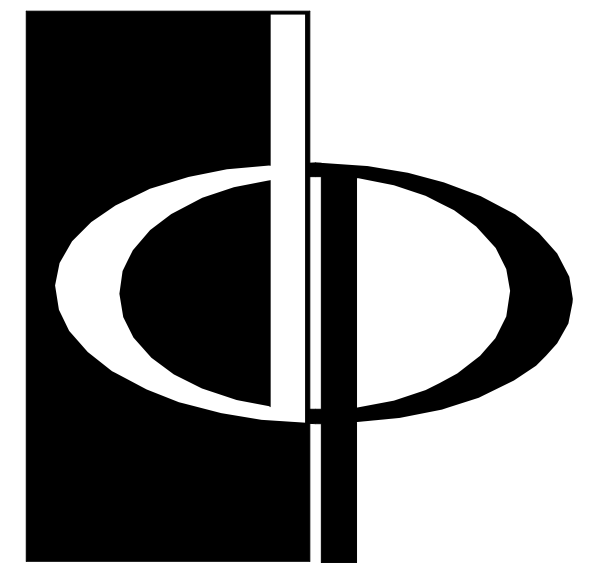
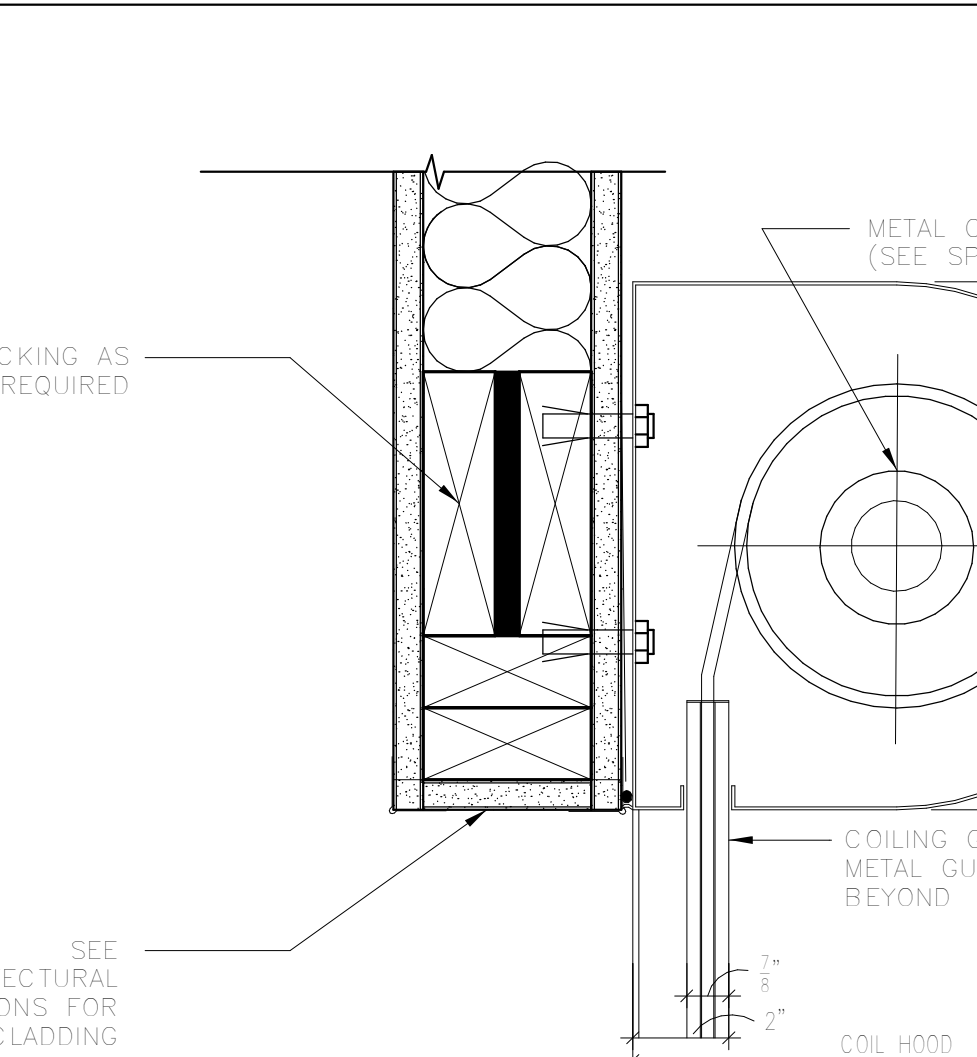
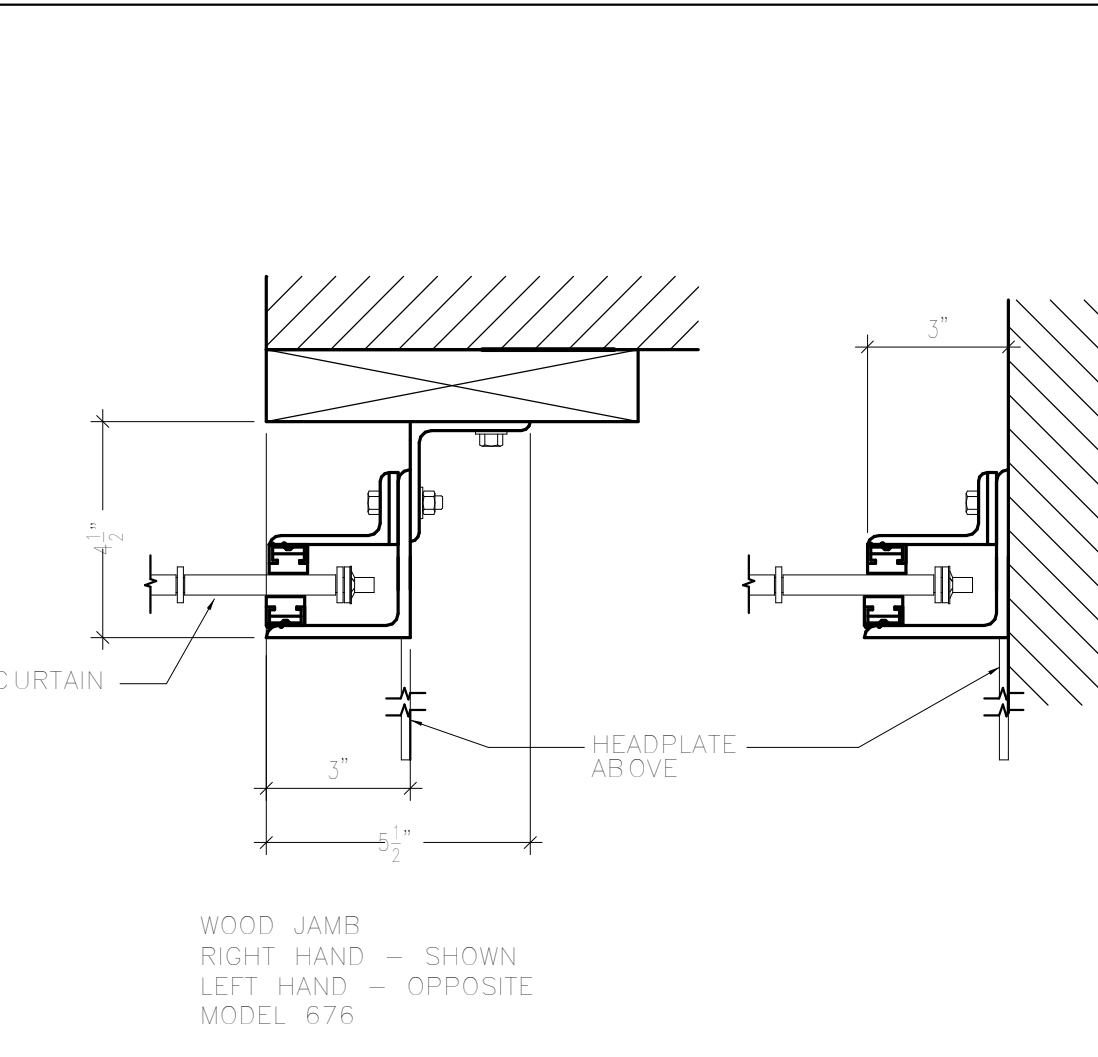
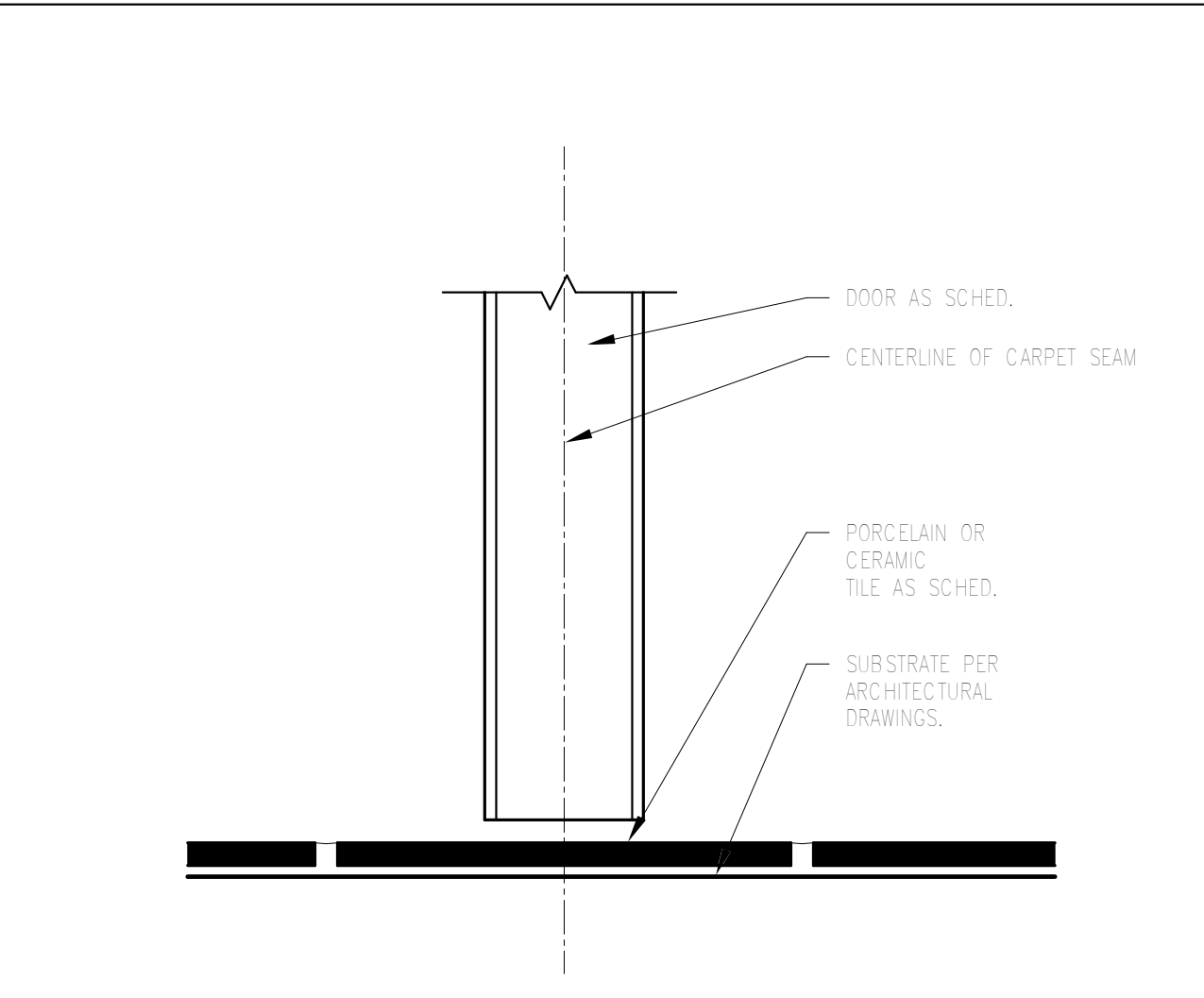
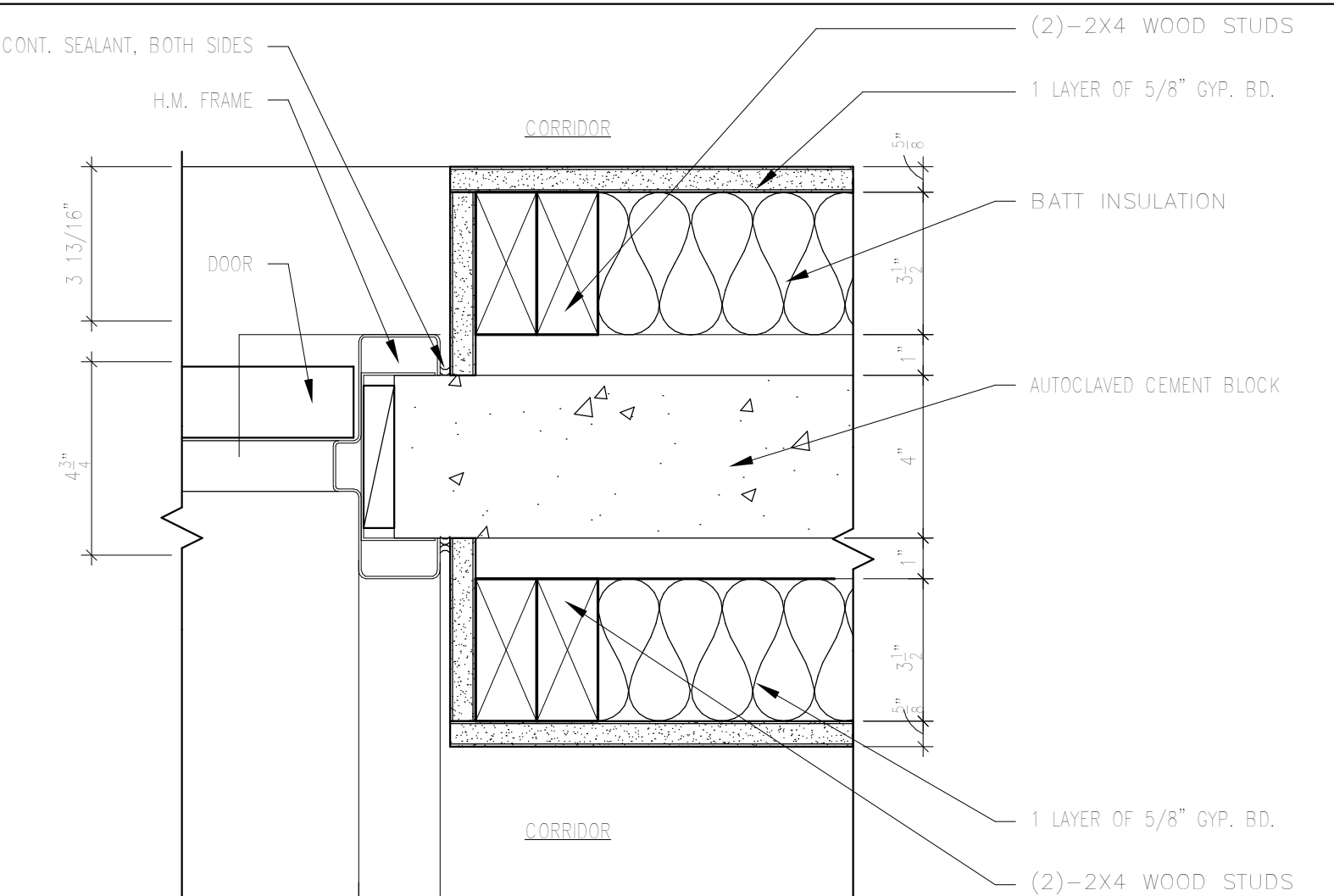
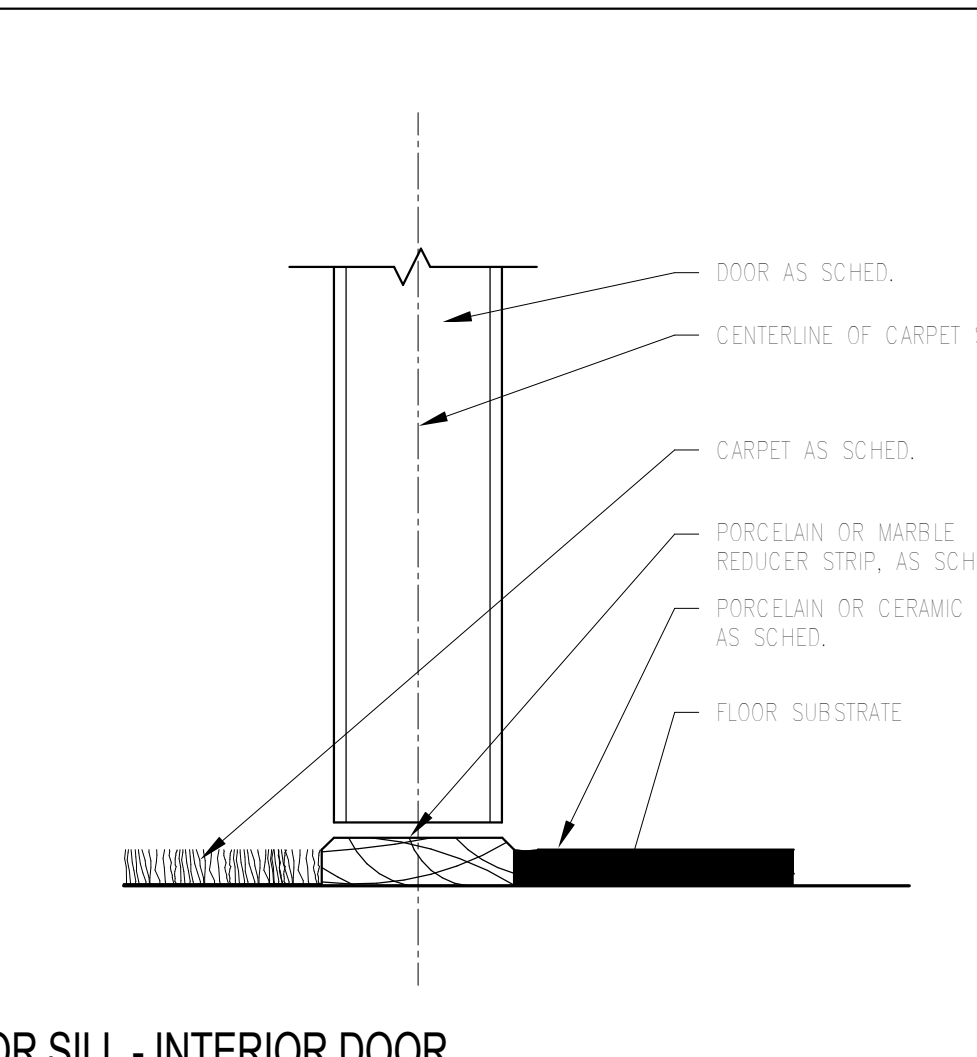
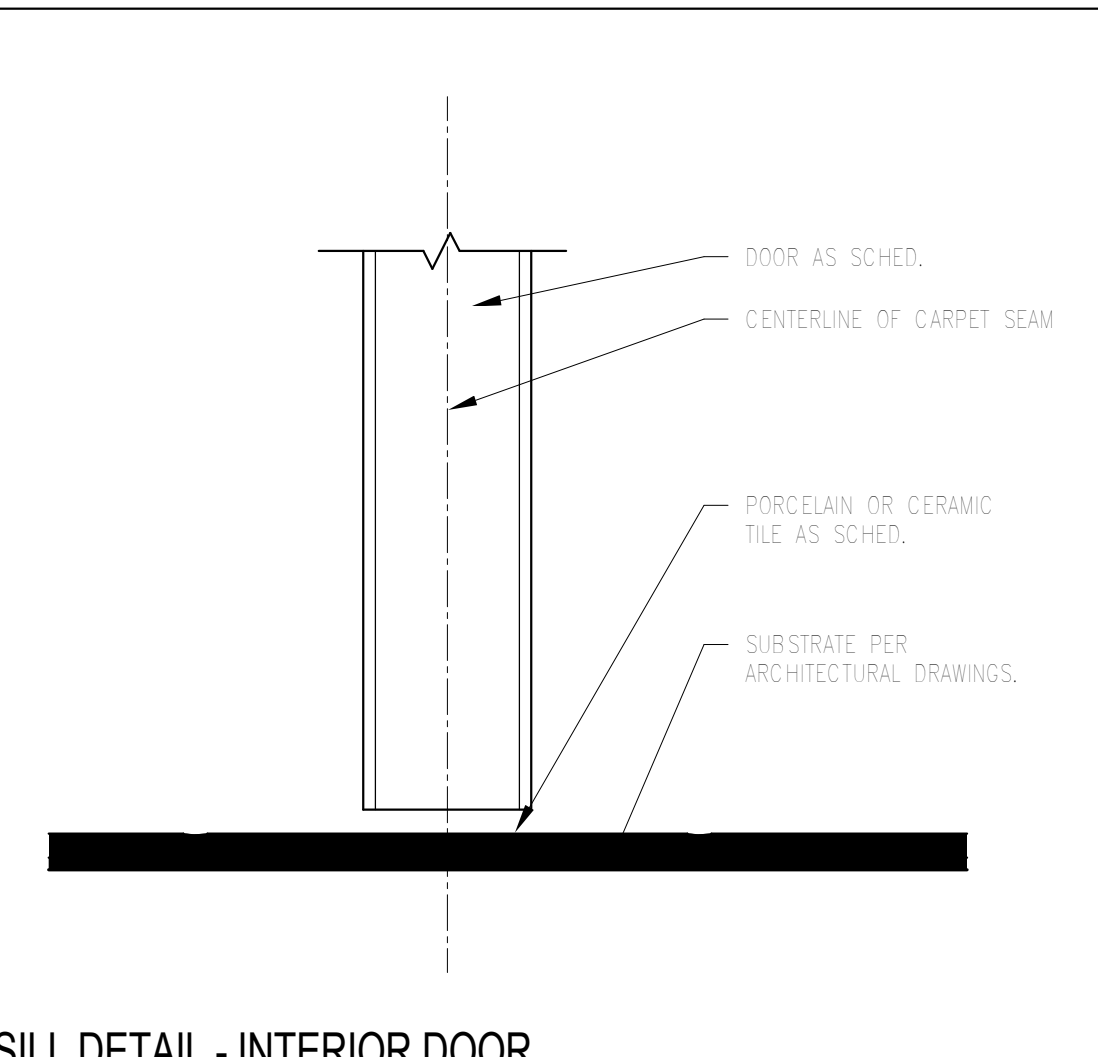
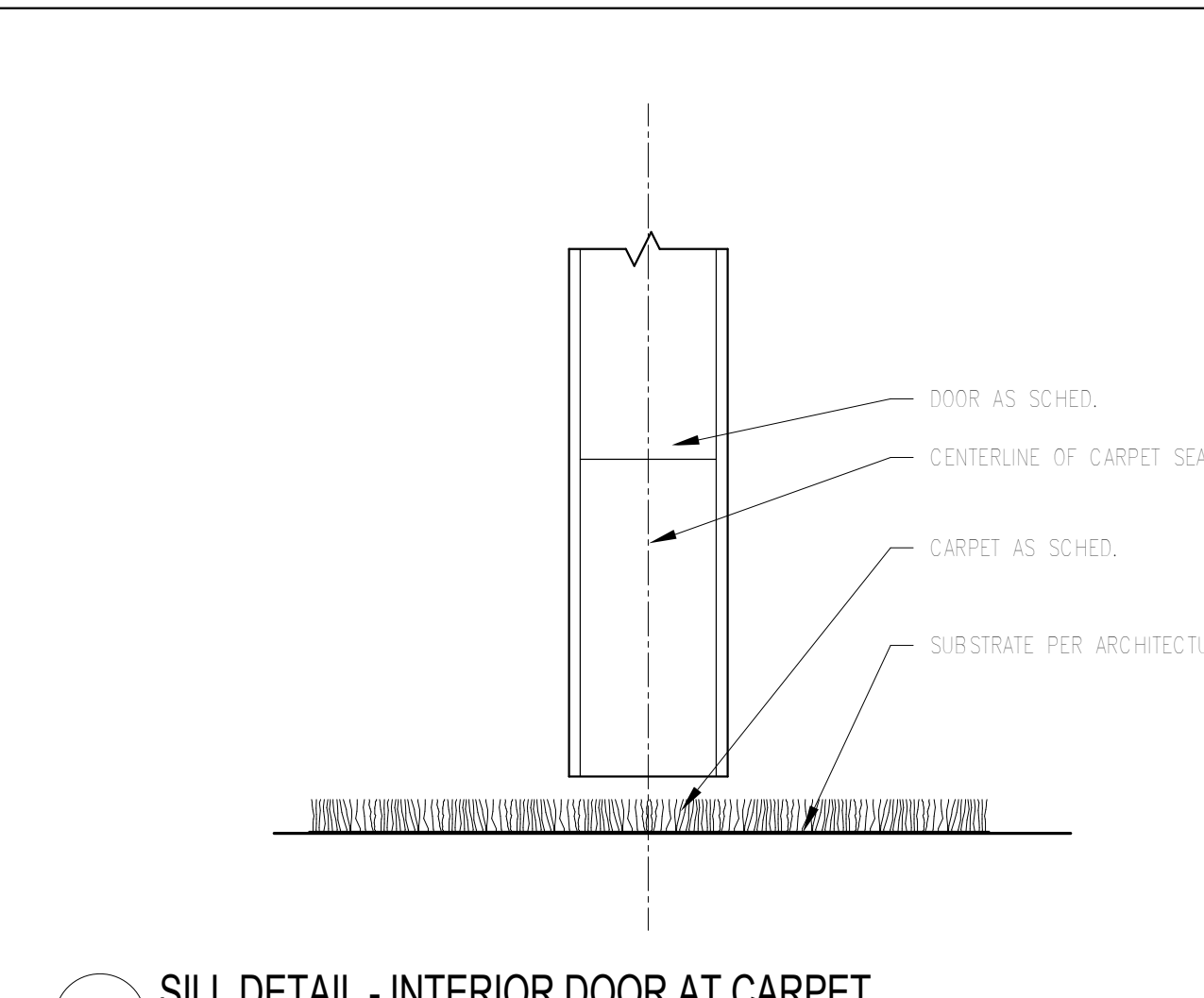
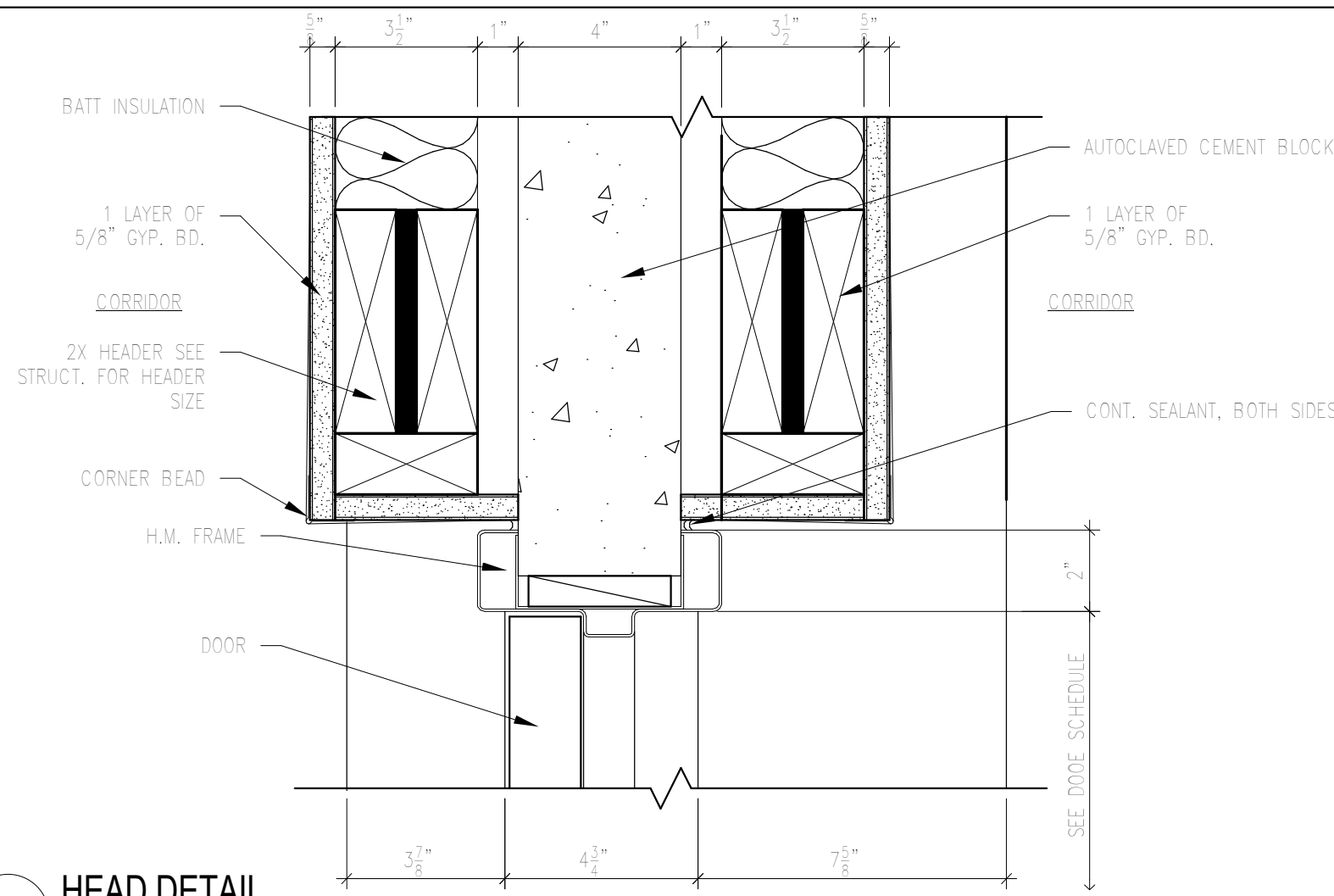
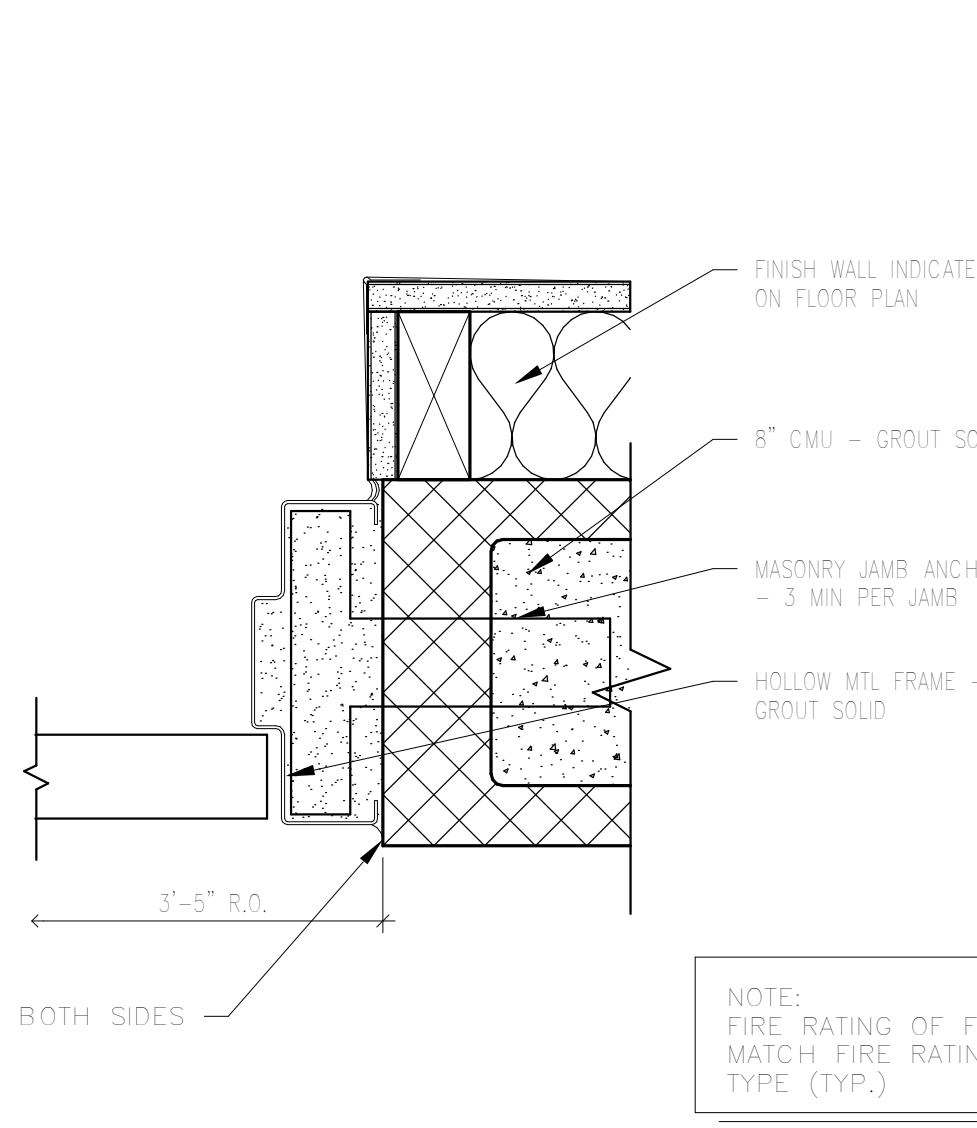
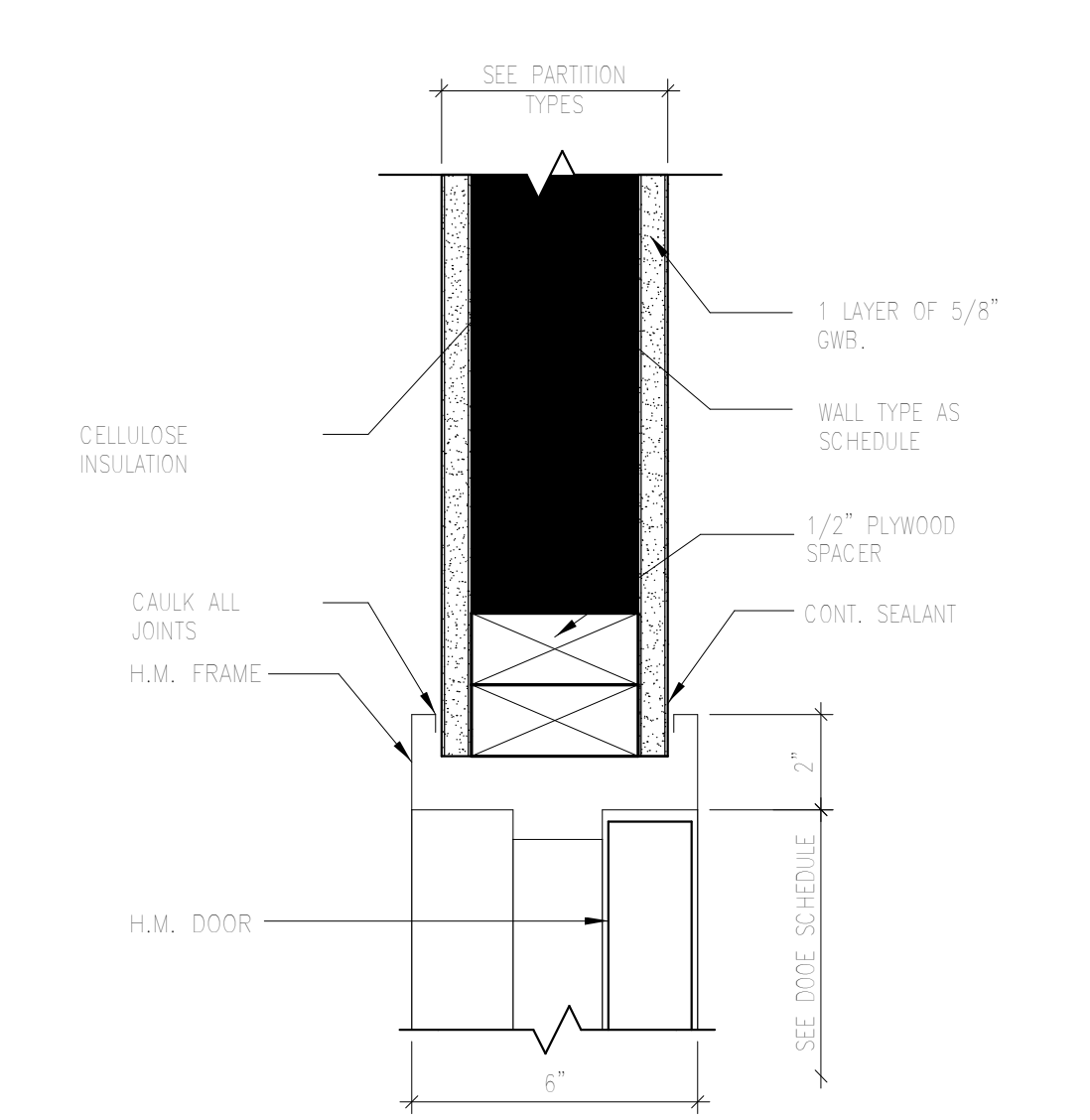
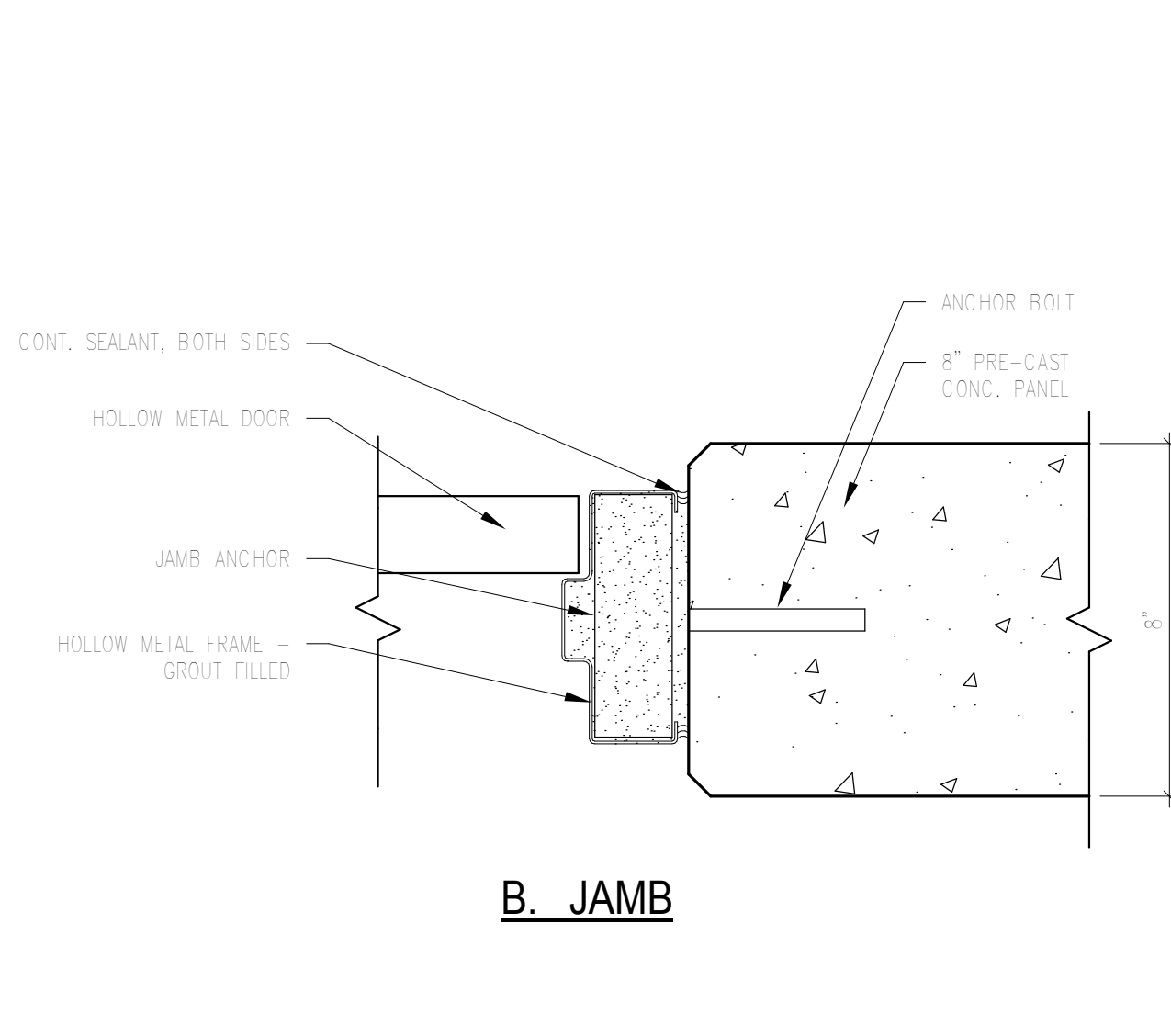
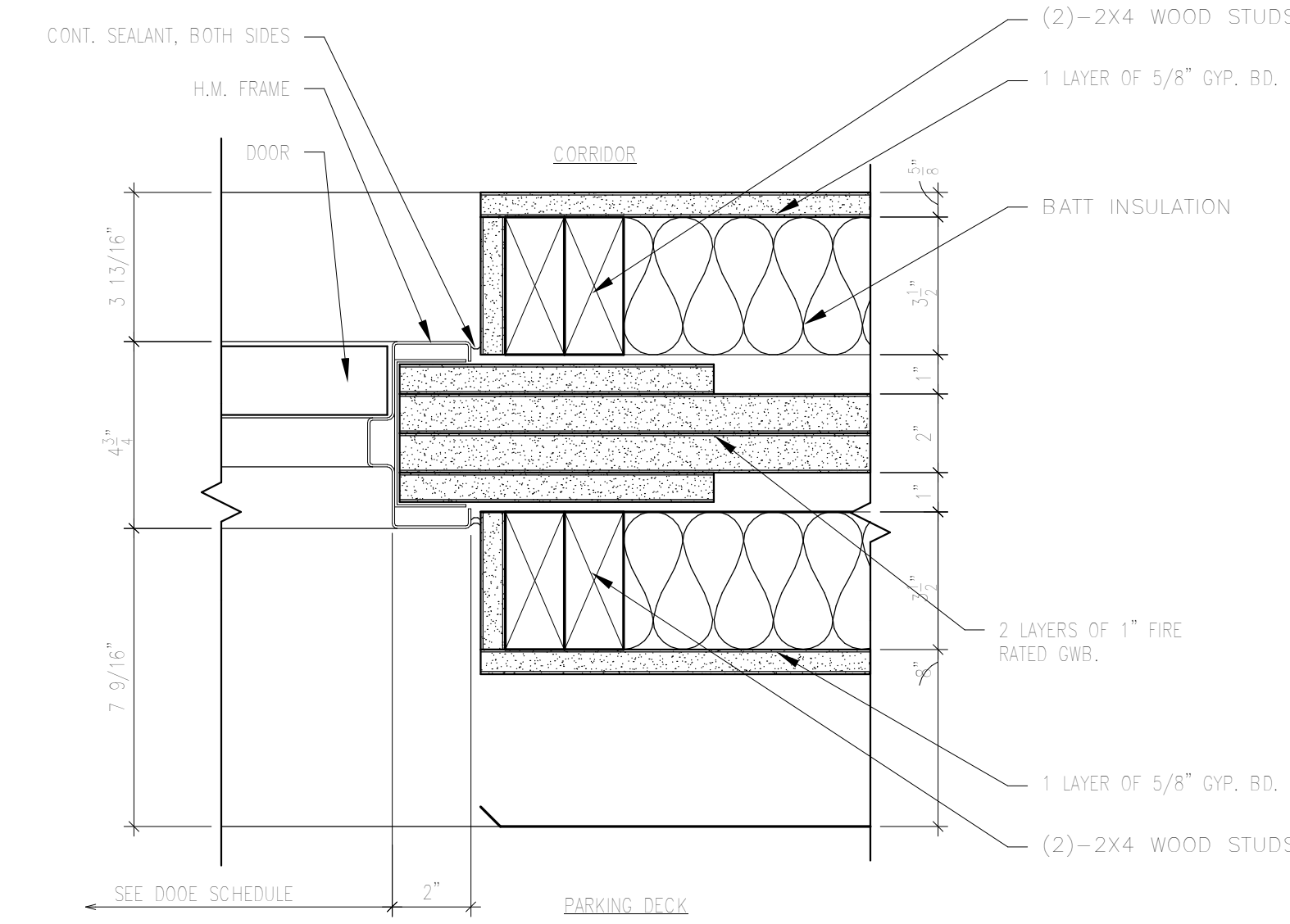
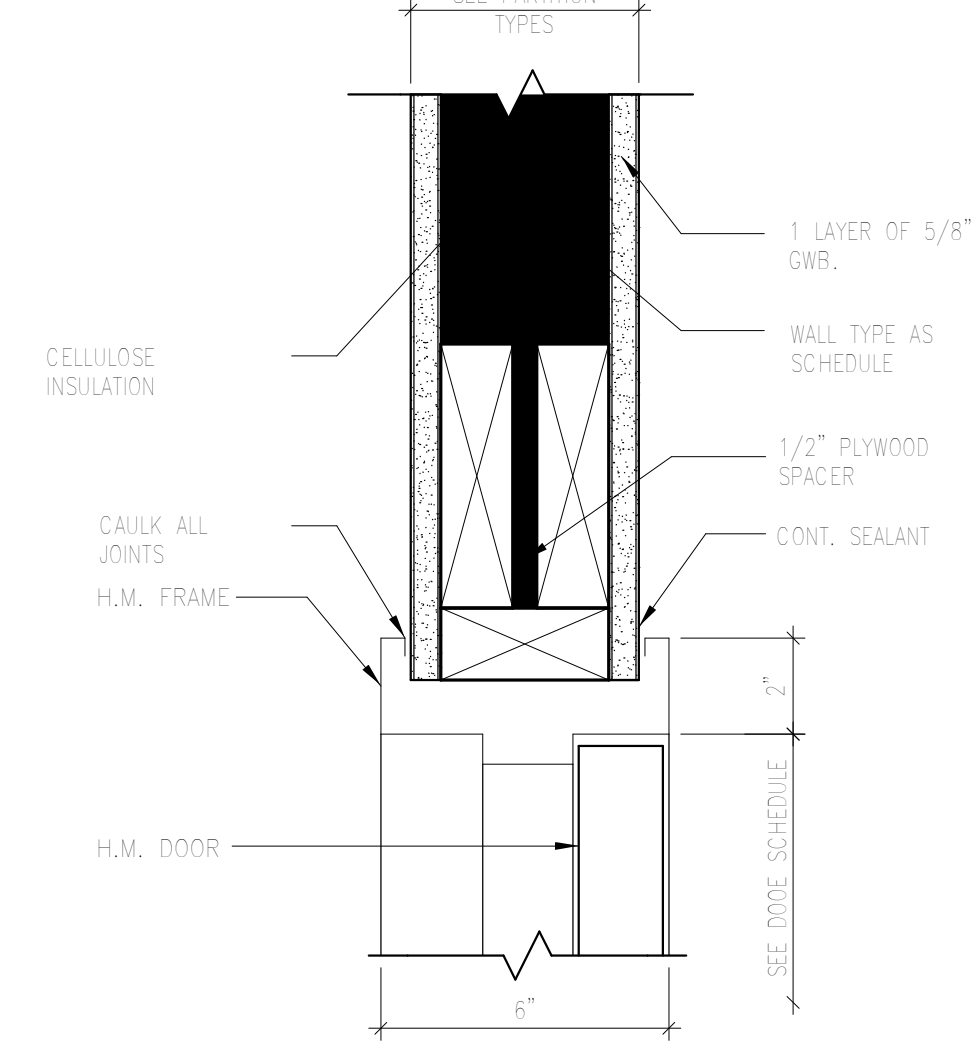
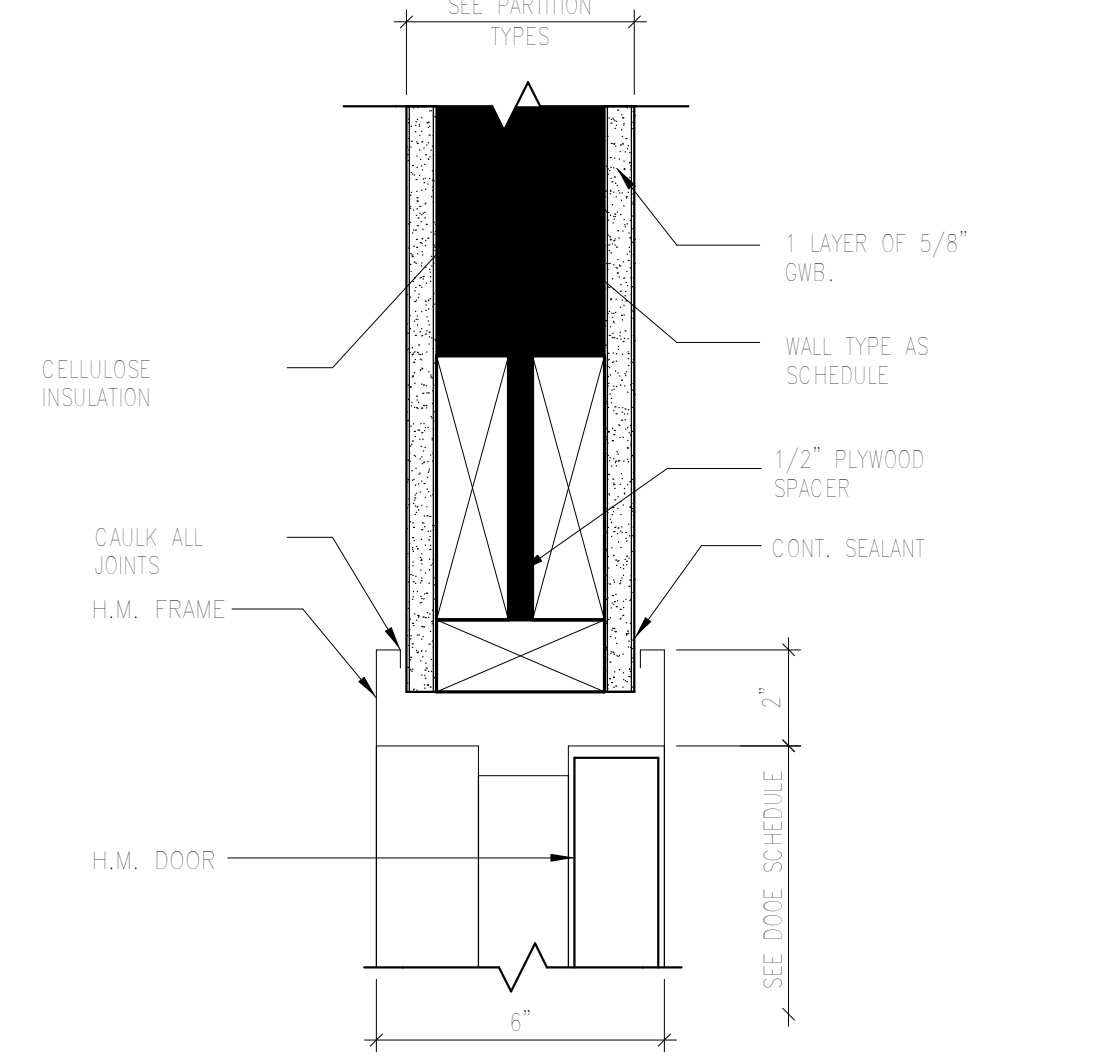
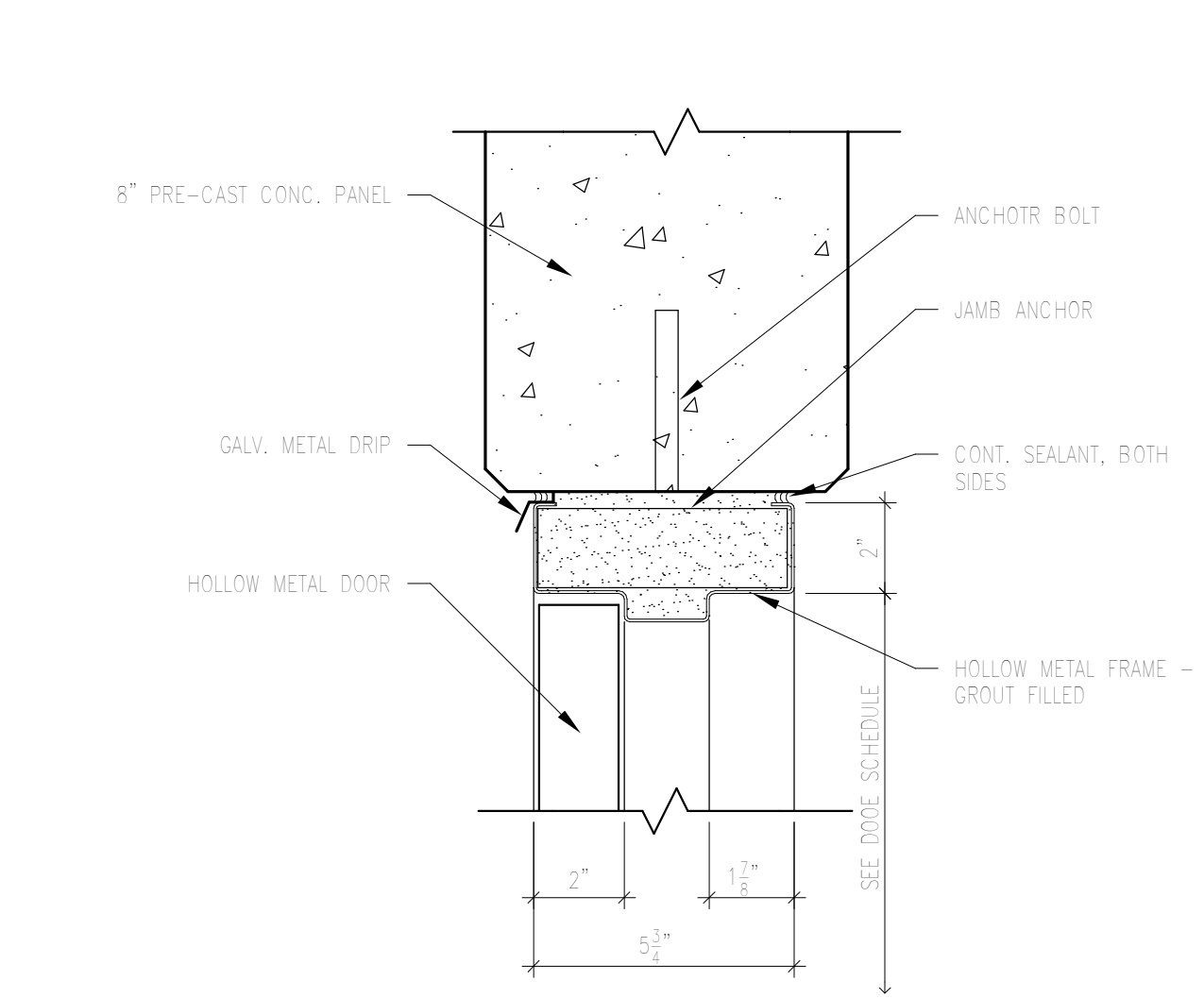
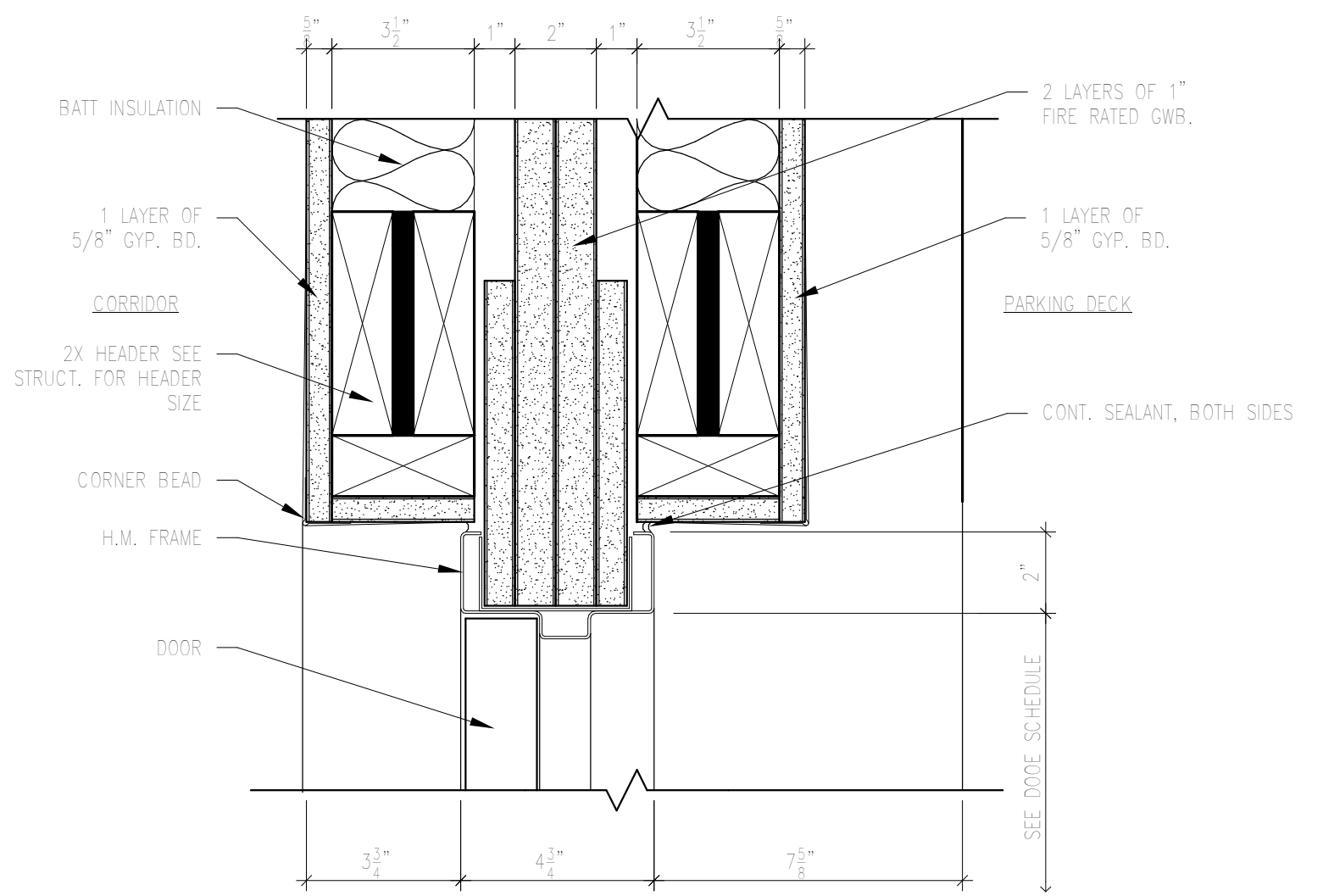


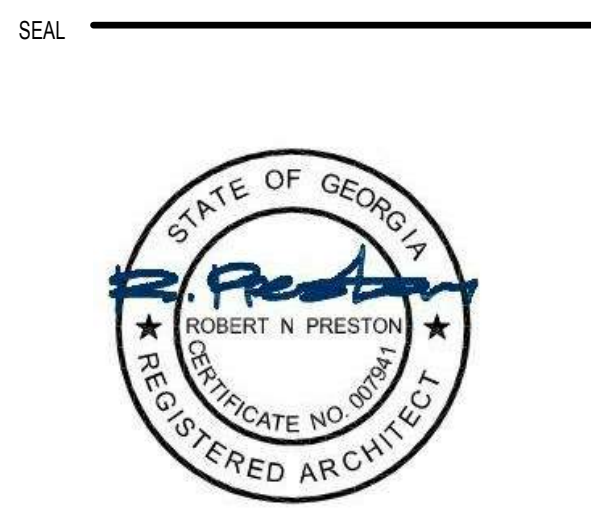
T:\04\2017\8.07.39 PM C:\Data File\Revit (2016)\483101\Grid 75 IL\F16-C_jamb1.rvt



THE PRESTON
PARTNERSHIP, LLC
A MULTI-DISCIPLINARY DESIGN FIRM

SOUTH TERRACES
115 PERIMETER CENTER PLACE, SUITE 950
ATLANTA, GEORGIA 30346
TELEPHONE: 770 396 7248
FAX: 770 396 2945

WWW.THEPRESTONPARTNERSHIP.COM
CONSULTANT



PROJECT
RESERVE AT THE
BALLPARK, PHASE II,
AKA REVEL AT THE
BALLPARK
2885 CRESCENT PKWY
SMYRNA, GA 30080

FOR



ATLANTIC REALTY
PARTNERS

3438 PEACHTREE ROAD
SUITE 1425
ATLANTA, GA 30326

ISSUES & REVISIONS	DATE
CONCEPTUAL DESIGN	08/21/2015
SCHEMATIC DESIGN	09/28/2015
CMPI DESIGN DEVELOPMENT	10/15/2015
GMP	04/03/2017
PERMIT SET	05/22/2017
3. BUILDING PERMIT	07/25/2017

DATE 05/22/2017
JOB NUMBER 1493101
DRAWN BY EKS/NB
CHECKED BY CWB
SHEET TITLE DOOR DETAILS

SHEET NUMBER

COMMENTS

BUILDING PERMIT RE-SUBMISSION

30X42

© 2017 The Preston Partnership, LLC

A8-02