

# THE PRESTON PARTNERSHIP, LLC

A MULTI-DISCIPLINARY DESIGN FIRM  
SOUTH TERRACES  
115 PERIMETER CENTER PLACE, SUITE 950  
ATLANTA, GEORGIA 30346  
TELEPHONE: 770 396 7248  
FAX: 770 396 2945

WWW.THEPRESTONPARTNERSHIP.COM  
CONSULTANT

SEAL



PROJECT

RESERVE AT THE  
BALLPARK, PHASE II,  
AKA REVEL AT THE  
BALLPARK  
2885 CRESCENT PKWY  
SMYRNA, GA 30080

FOR



## ATLANTIC REALTY PARTNERS

3438 PEACHTREE ROAD  
SUITE 1425  
ATLANTA, GA 30326

ISSUES &amp; REVISIONS DATE

GMP 04/03/2017  
PERMIT SET 05/22/2017  
3. BUILDING PERMIT 07/25/2017  
4. FM COMMENTS #2 08/11/2017  
5. BUILDING PERMIT 10/02/2017  
COMMENTS / COORDINATION

DATE 05/22/2017

JOB NUMBER 1493101

DRAWN BY Author

CHECKED BY Checker

SHEET TITLE  
WINDOW SCHEDULE & TYPES &  
STOREFRONT SCHEDULE

SHEET NUMBER

A8-05

COMMENTS

BUILDING PERMIT RE-SUBMISSION

30X42

© 2017 The Preston Partnership, LLC

## REVISION SUMMARY #4

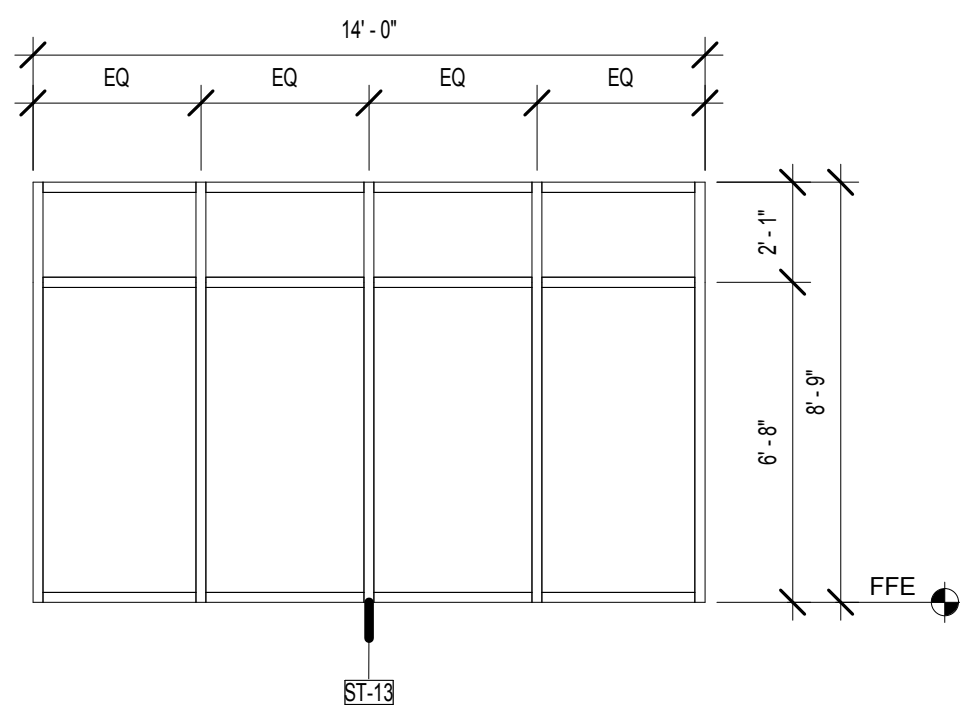
A. ADDED NOTE

## REVISION SUMMARY #5

A. ADDED NOTES / GEN COORD  
B. MODIFIED WINDOW TYPES FOR FIRE RATED GLASS

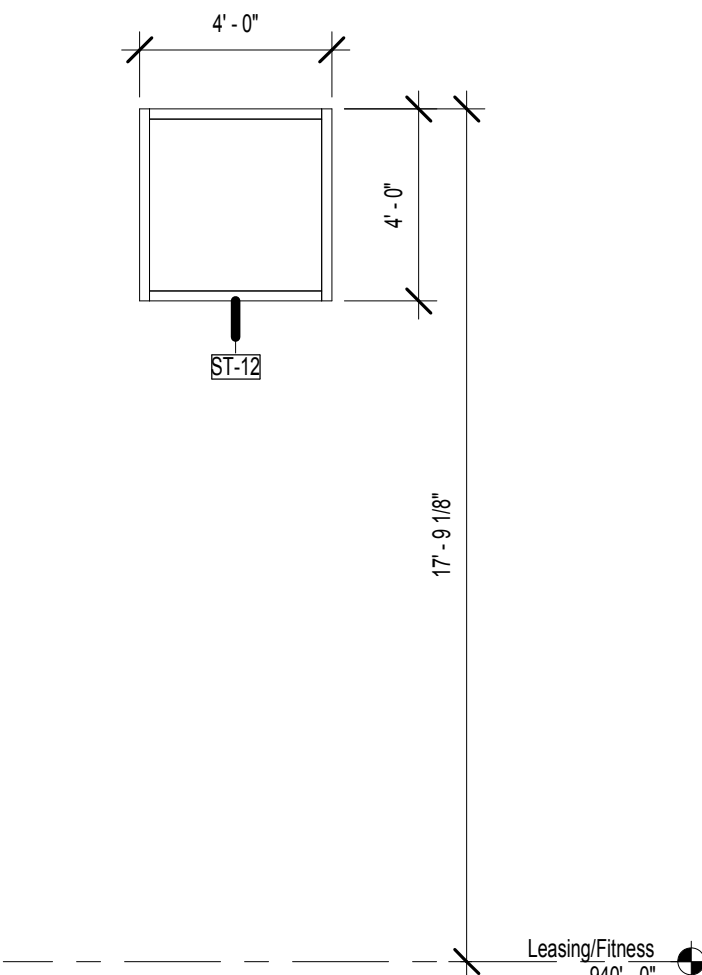
13 ST-13

SCALE: 1/4" = 1'-0"



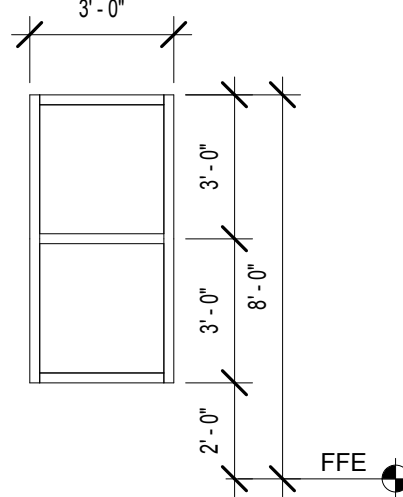
12 ST-12

SCALE: 1/4" = 1'-0"



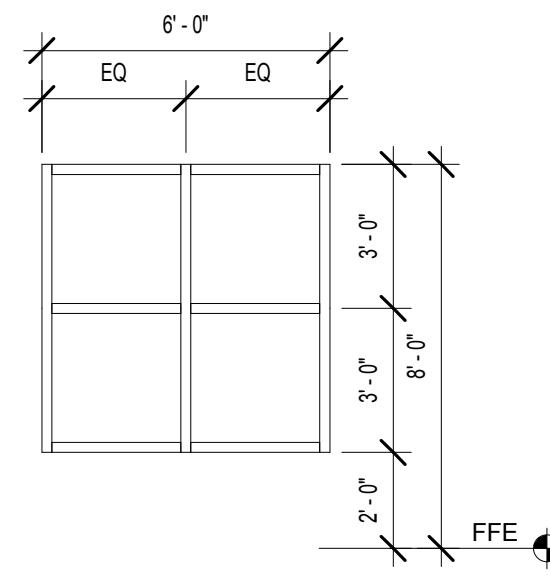
11 ST-11

SCALE: 1/4" = 1'-0"



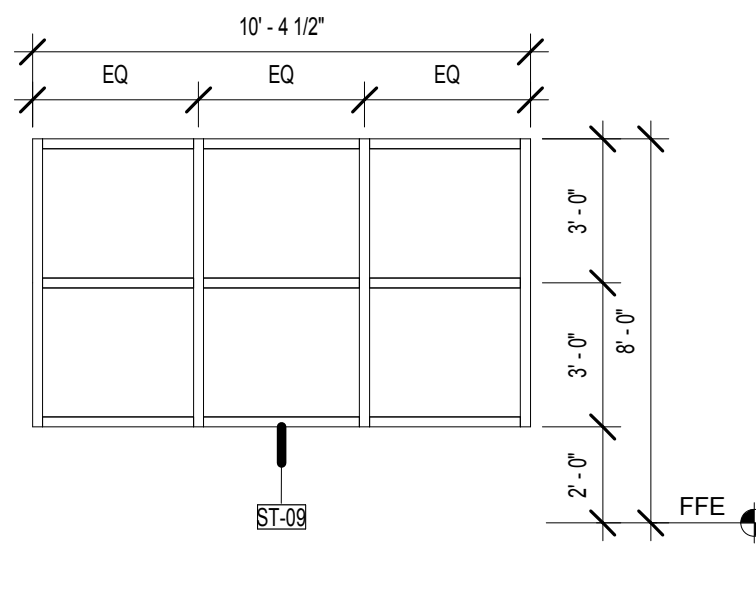
10 ST-10

SCALE: 1/4" = 1'-0"



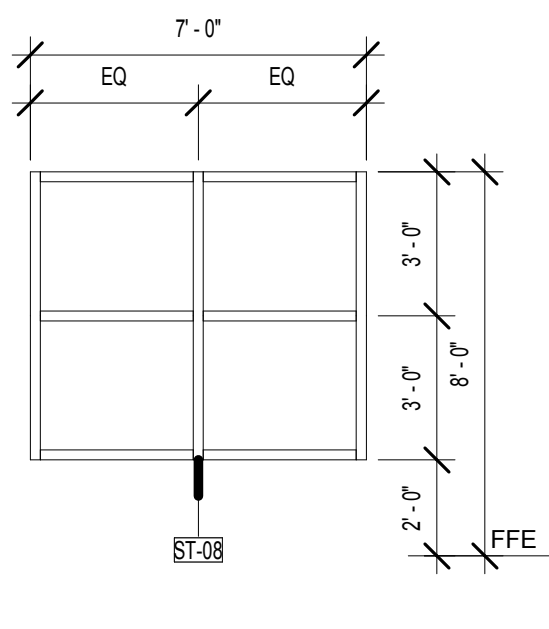
9 ST-09

SCALE: 1/4" = 1'-0"



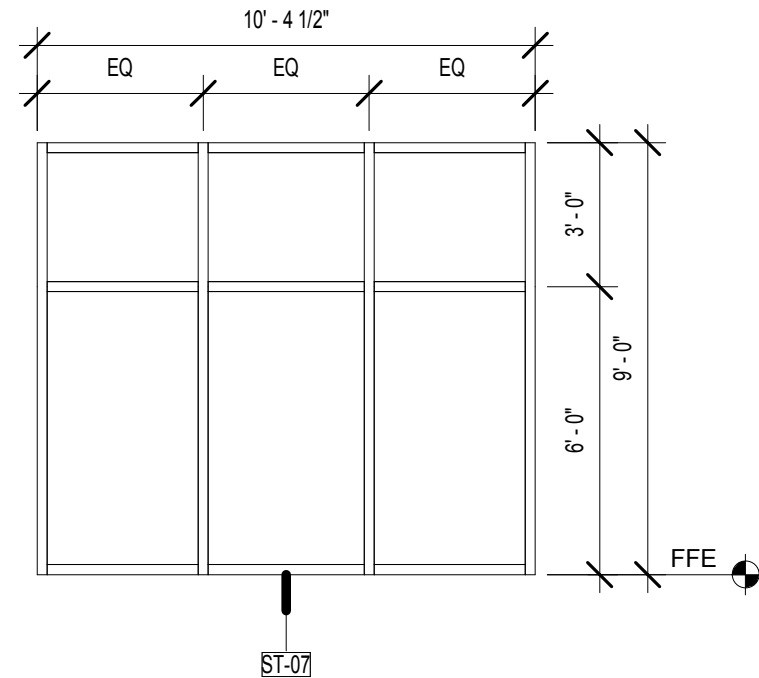
8 ST-08

SCALE: 1/4" = 1'-0"



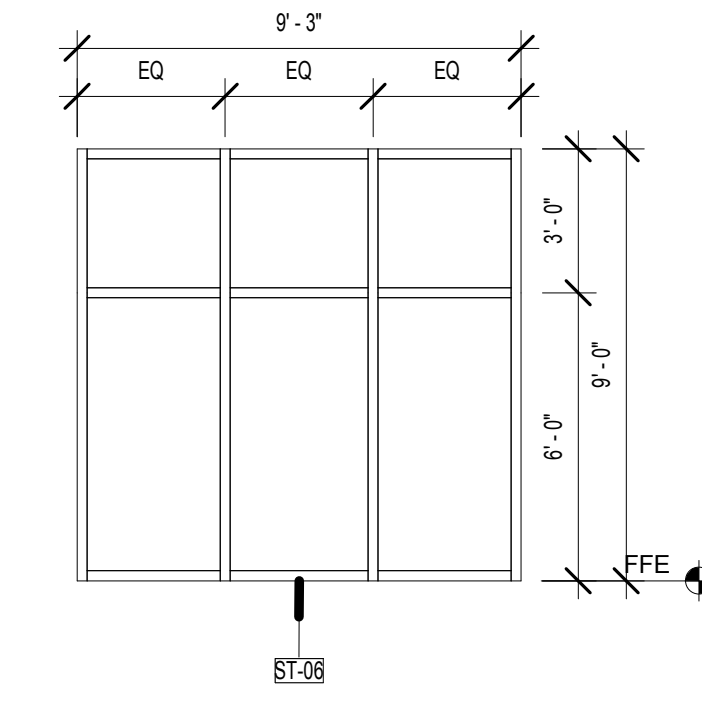
7 ST-07

SCALE: 1/4" = 1'-0"



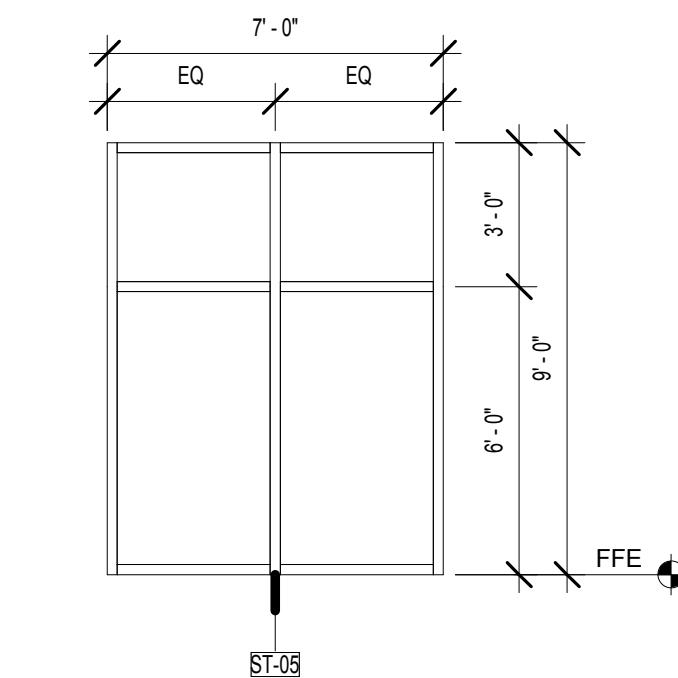
6 ST-06

SCALE: 1/4" = 1'-0"



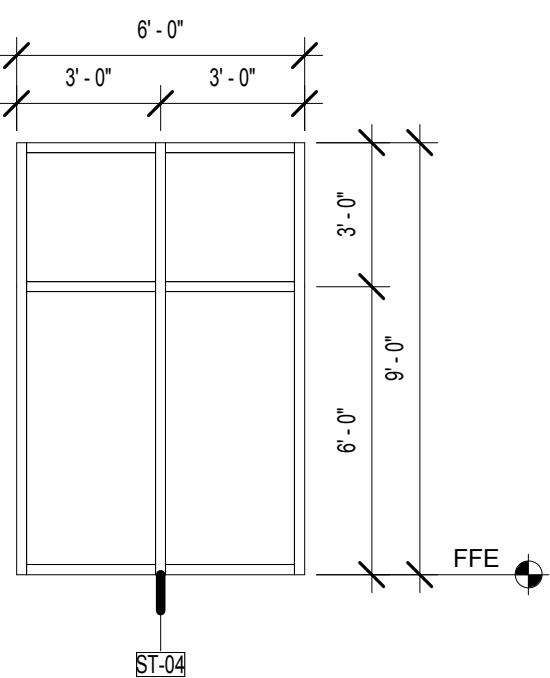
5 ST-05

SCALE: 1/4" = 1'-0"



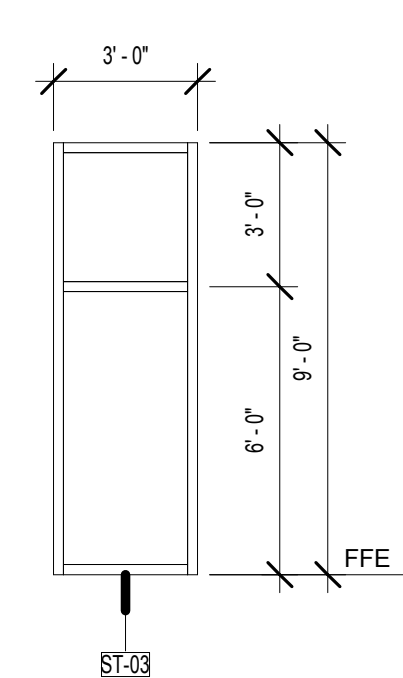
4 ST-04

SCALE: 1/4" = 1'-0"



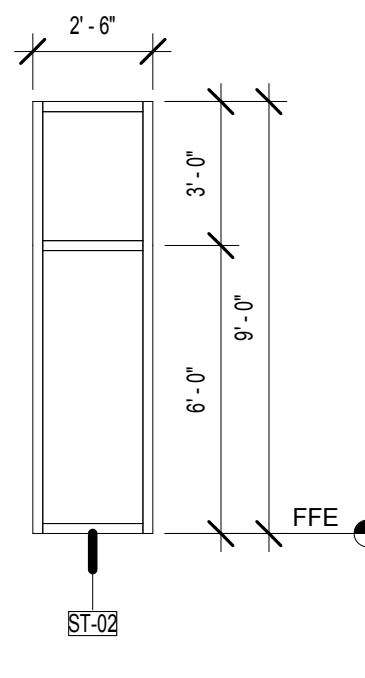
3 ST-03

SCALE: 1/4" = 1'-0"



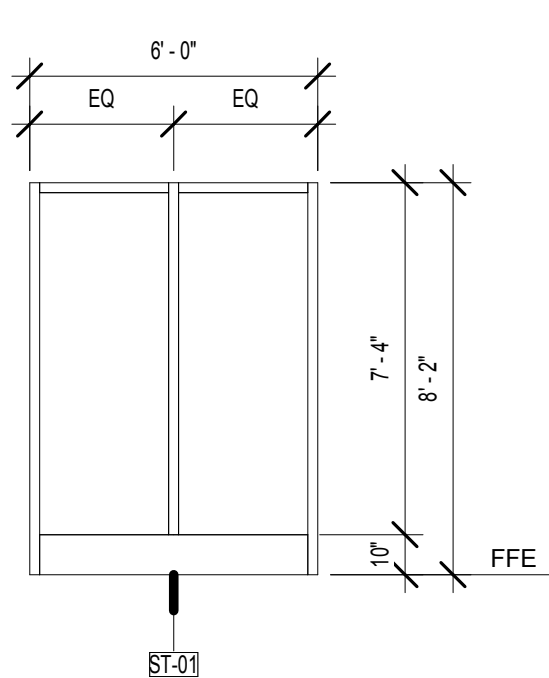
2 ST-02

SCALE: 1/4" = 1'-0"



1 ST-01

SCALE: 1/4" = 1'-0"



## STOREFRONT SCHEDULE

TAG #	STOREFRONT				REMARKS
	ROUGH OPENING	WIDTH	HEIGHT	MATL FINISH	
ST-01	6' - 0"	8' - 2"	ALUM	FACTORY	
ST-02	2' - 6"	9' - 0"	ALUM	FACTORY	
ST-03	3' - 0"	9' - 0"	ALUM	FACTORY	
ST-04	6' - 0"	9' - 0"	ALUM	FACTORY	
ST-05	7' - 0"	9' - 0"	ALUM	FACTORY	
ST-06	9' - 3"	9' - 0"	ALUM	FACTORY	
ST-07	10' - 4 1/2"	9' - 0"	ALUM	FACTORY	
ST-08	7' - 0"	6' - 0"	ALUM	FACTORY	
ST-09	10' - 4 1/2"	6' - 0"	ALUM	FACTORY	
ST-10	6' - 0"	6' - 0"	ALUM	FACTORY	
ST-11	3' - 0"	6' - 0"	ALUM	FACTORY	
ST-12	4' - 0"	4' - 0"	ALUM	FACTORY	
ST-13	14' - 0"	8' - 9"	ALUM	FACTORY	

## WINDOW SCHEDULE

TYPE	WINDOW			FRAME		MANUFACTURER	HEADER HEIGHT	SILL HEIGHT	HEAD DETAIL	JAMB DETAIL	SILL DETAIL	REMARKS
	WIDTH	HEIGHT	GLAZING	FINISH	MATERIAL							
W1	2' - 0"	6' - 0"	Glass	Factory	ALUM		8' - 0"	2' - 0"				
W2	2' - 6"	6' - 0"	Glass	Factory	ALUM		8' - 0"	2' - 0"				
W3	3' - 0"	6' - 0"	Glass	Factory	ALUM		SEE ELEV.	SEE ELEV.				
W4	4' - 0"	6' - 0"	Glass	Factory	ALUM		8' - 0"	2' - 0"				
W5	4' - 0"	6' - 0"	Glass	Factory	ALUM		8' - 0"	2' - 0"				
W6	4' - 0"	6' - 0"	Glass	Factory	ALUM	SuperLite	8' - 0"	2' - 0"				
W7	6' - 0"	6' - 0"	Glass	Factory	ALUM	SuperLite	8' - 0"	2' - 0"				
W8	7' - 0"	6' - 0"	Glass	Factory	ALUM		SEE ELEV.	SEE ELEV.				
W9	9' - 0"	6' - 0"	Glass	Factory	ALUM							
W10	6' - 4"	3' - 2"	Glass	Factory	ALUM		7' - 4"	8"				
W11	2' - 4"	6' - 8"	Glass	Factory	ALUM		7' - 4"	8"				
W12	4' - 0"	4' - 0"	Glass	Factory	ALUM		7' - 0"	3' - 0"				
W13	3' - 0"	7' - 0"	Glass	Factory	ALUM		7' - 6"	6"				
W14	6' - 0"	4' - 0"	Glass	Factory	ALUM		7' - 0"	3' - 0"				
W15	2' - 2"	2' - 2"	Glass	Factory	ALUM							
W16	3' - 4"	3' - 4"	Glass	Factory	ALUM		6' - 10"	3' - 6"				SEE MECH. M0-00
W17	5' - 0"	6' - 0"	Glass	Factory	ALUM		8' - 0"	2' - 0"				
W18	1' - 6"	1' - 0"	Glass	Factory	ALUM	Alu-Lite	10' - 3"	9' - 3"				LOUVER

## NOTES

WINDOWS SHALL HAVE SAFETY (TEMPERED) GLAZING WHEN LOCATED WITHIN 24" OF A DOOR, EXCLUDING THOSE IN DWELLING UNITS WHERE ADJACENT DOOR IS LOCATED IN WALL PERPENDICULAR TO WINDOW SILL. REFER TO BUILDING EXTERIOR ELEVATIONS FOR CONFIRMATION OF WINDOW MULLIONS AND FOR EACH RELATED DESIGN / CONFIGURATION.

OPERABLE WINDOWS WITH A SILL HEIGHT OF LESS THAN 36" ARE TO COMPLY WITH IBC 1013.3

## WINDOW FLASHING NOTES

• ALL WINDOWS WITH FLANGES SHALL HAVE A BAND OF SEALANT APPLIED TO THE BACK SIDE AND BOTTOM OF THE WINDOW FLANGE.  
• SEE STEP BY STEP DETAILS FOR SELF-ADHERED FLASHING S.A.F. ON DETAIL.  
• SELF ADHERED MEMBRANE FLASHING UNDER SHEET METAL FLASHINGS TO BE ABLE TO WITHSTAND HIGH TEMPERATURES WITHOUT DE-LEAMINATION.  
• WHERE TRANSITION TAPE IS APPLIED OVER THE MRB, MOISTURE RESISTANT BARRIER AND THE FLEXIBLE THRU-WALL FLASHING, THE TRANSITION TAPE SHALL BE APPLIED IN A SINGLE FASHION.  
• ALL WINDOWS TO HAVE END DAMS AT SILL AND JAMBS, TYP. SEE SHEET A8-06 & A8-07.

## ALUMINUM WINDOW BASIS OF DESIGN:

• ALL WINDOWS AND DOORS  
1 (800) 727-8835  
GAS55 SINGLE HUNG, ME1-A-1x1 TO MEET THE FOLLOWING CRITERIA:  
THERMALLY IMPROVED, 110° F5, FILL 1: ARGON (80/10), LOW E, CL, NO GRID  
STRUCTURAL RATING H-R40  
STC - 31  
SHGC - 30  
U - .50  
COLOR - WHITE & BRONZE

## FIRE RATED GLASS WINDOW NOTE:

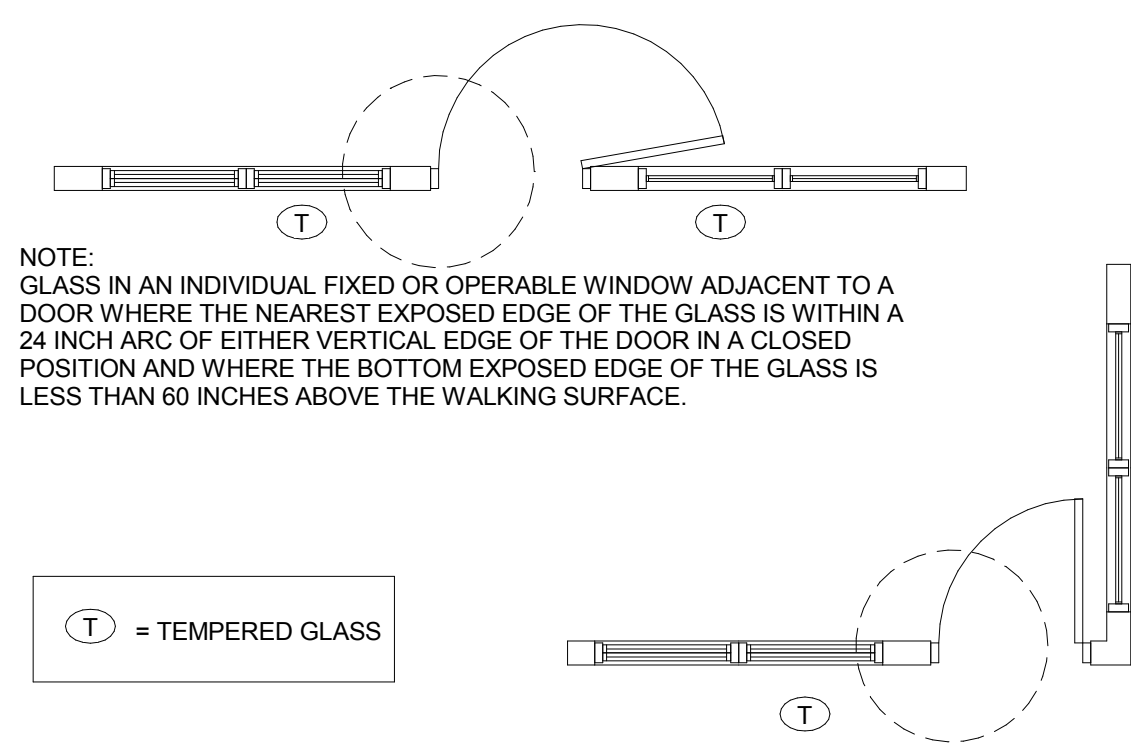
GLASS SHALL BE FIRE RATED IF WITHIN 4'-0" RADIUS OF FIRE WALL BASED ON DETAILS 3 / A8-06 4 / A8-06

## BASIS OF DESIGN

• SAFETY FIRST 1/2" THICK FIRE 45 MINUTE FIRE-RATED GLASS AND FRAMING TO BE SUPERLITE II-XL 45 (www.sfl.com)  
• 1/2" THICK LIMITED TO 1,296 SQ IN. 3/4" THICK UP TO 4,968 SQ IN.  
• FIRE RATING: 45 MINUTES WITH HOSE STREAM TEST. MEETS ASTM E119 AND NFPA 251. IMPACT SAFETY RATING: CPSC 16 CFR CAT. I & II.  
• STC: 40 (WITH 3/4" PROFILE)

## ALTERNATE

• FIRE GLASS PIKINGTON PYROSTOP 3/4" THICK GLAZING, 45 MINUTE FIRE-RATED GLASS CERAMIC BY TECHNICAL GLASS PRODUCTS (TGP - www.tgpglass.com) LIMITED TO 4,300 SQ IN.  
• FIRE RATING: 45 MINUTES WITH HOSE STREAM TEST. BARRIER TO FIRE AND RADIANT HEAT FOR PROTECTION FROM THE NON-FIRE SIDE OF THE GLASS.  
• IMPACT SAFETY RATING: CPSC 16 CFR CAT. I & II.  
• STC: 40 (WITH 3/4" PROFILE)

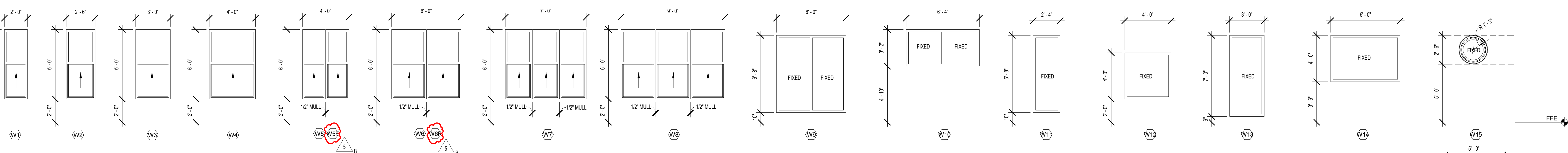


NOTE: GLASS IN AN INDIVIDUAL FIXED OR OPERABLE WINDOW ADJACENT TO A DOOR WHERE THE NEAREST EXPOSED EDGE OF THE GLASS IS WITHIN A 24 INCH ARC OF EITHER VERTICAL EDGE OF THE DOOR IN A CLOSED POSITION AND WHERE THE BOTTOM EXPOSED EDGE OF THE GLASS IS LESS THAN 60 INCHES ABOVE THE WALKING SURFACE.

T = TEMPERED GLASS

TEMPERED GLASS LOCATION DETAIL

NOT TO SCALE



## WINDOW TYPES

SCALE: 1/4" = 1'-0"