

**THE PRESTON  
PARTNERSHIP, LLC**  
A MULTI-DISCIPLINARY DESIGN FIRM

SOUTH TERRACES  
115 PERIMETER CENTER PLACE, SUITE 950  
ATLANTA, GEORGIA 30346  
TELEPHONE: 770 396 7248  
FAX: 770 396 2945

WWW.THEPRESTONPARTNERSHIP.COM  
CONSULTANT

SEAL



PROJECT

**RESERVE AT THE  
BALLPARK, PHASE II,  
AKA REVEL AT THE  
BALLPARK**  
2885 CRESCENT PKWY  
SMYRNA, GA 30080

FOR



**ATLANTIC  
REALTY  
PARTNERS**

3438 PEACHTREE ROAD  
SUITE 1425  
ATLANTA, GA 30326

ISSUES & REVISIONS	DATE
CONCEPTUAL DESIGN	08/21/2015
SCHEMATIC DESIGN	09/28/2015
CMPI-DESIGN DEVELOPMENT	10/15/2015
GMP	04/03/2017
PERMIT SET	05/22/2017
3. BUILDING PERMIT	07/25/2017

DATE 05/22/2017

JOB NUMBER 1493101

DRAWN BY NP

CHECKED BY PA

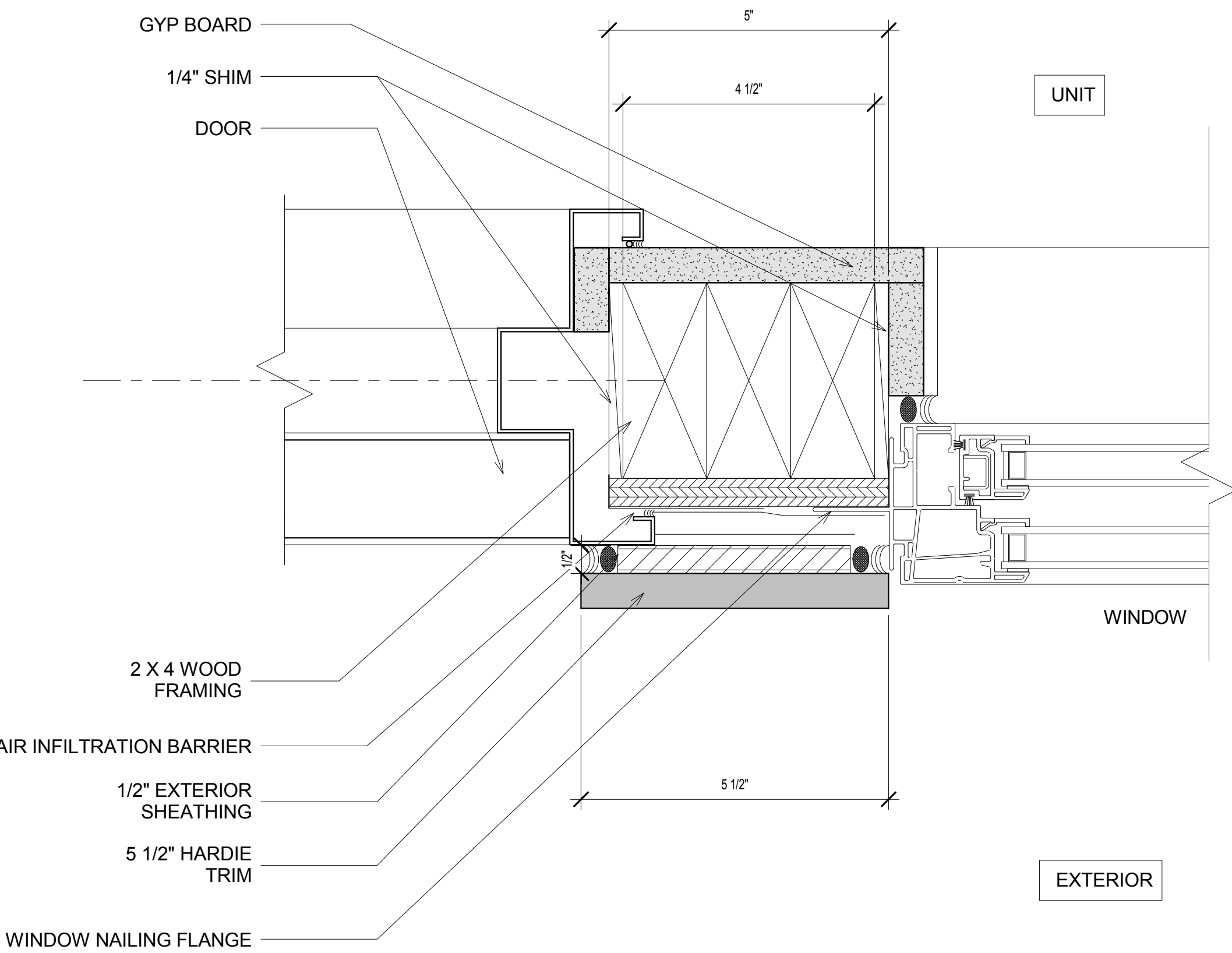
SHEET TITLE WINDOW/DOOR DETAILS

SHEET NUMBER

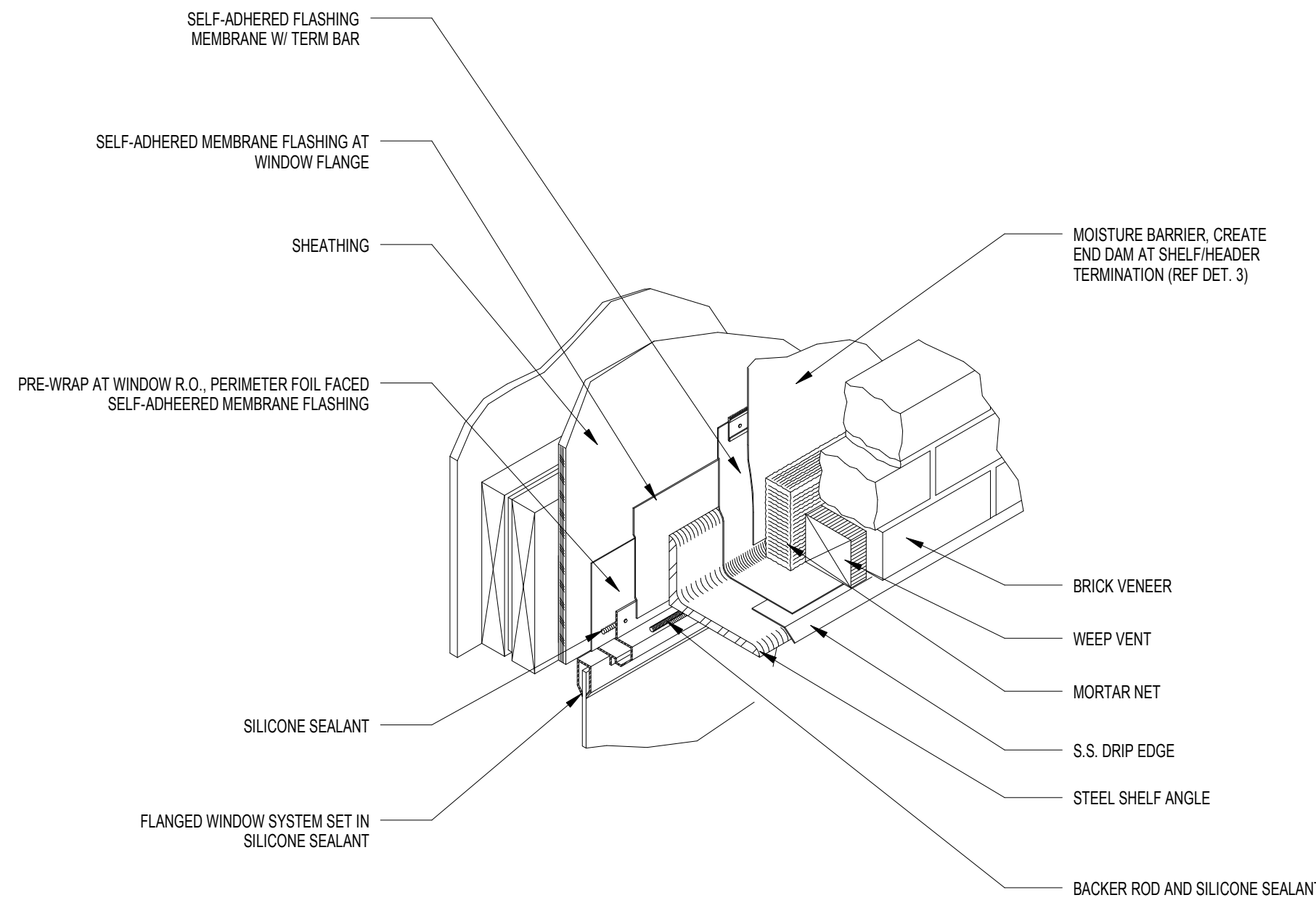
**A8-06**

COMMENTS BUILDING PERMIT RE-SUBMISSION

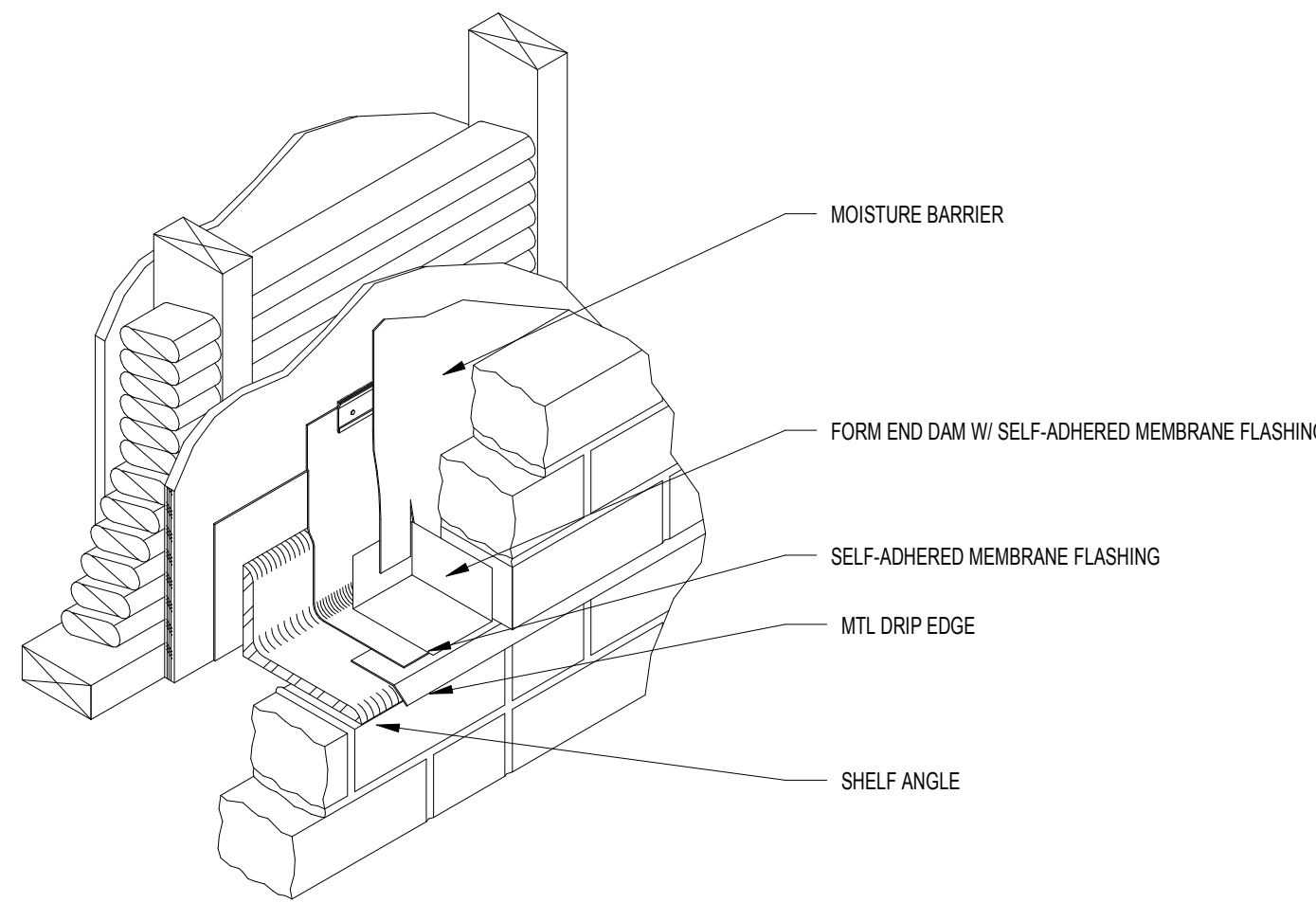
30X42 © 2017 The Preston Partnership, LLC



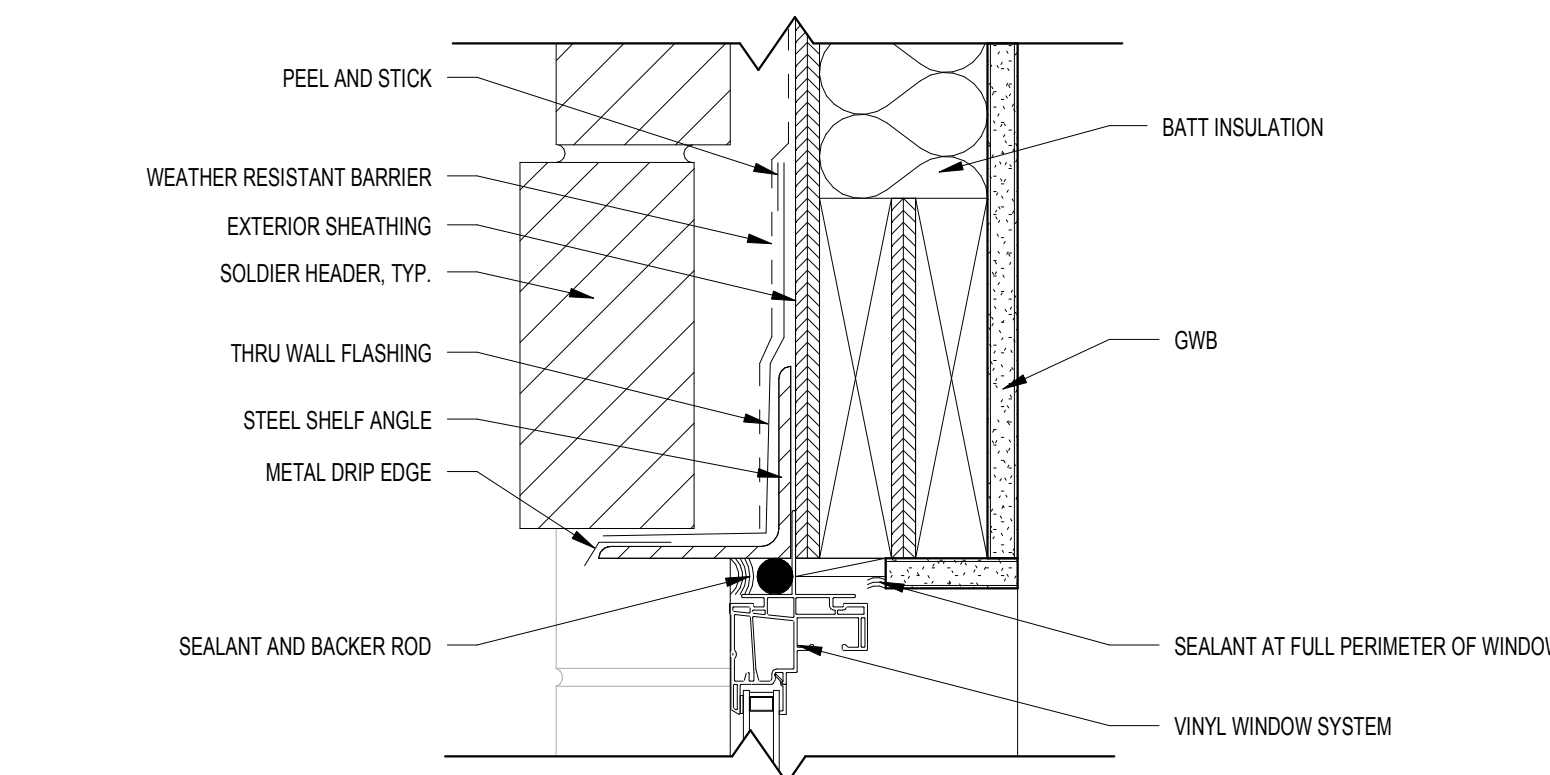
7 BALCONY DOOR TO WINDOW JAMB  
SCALE: 8\"/>



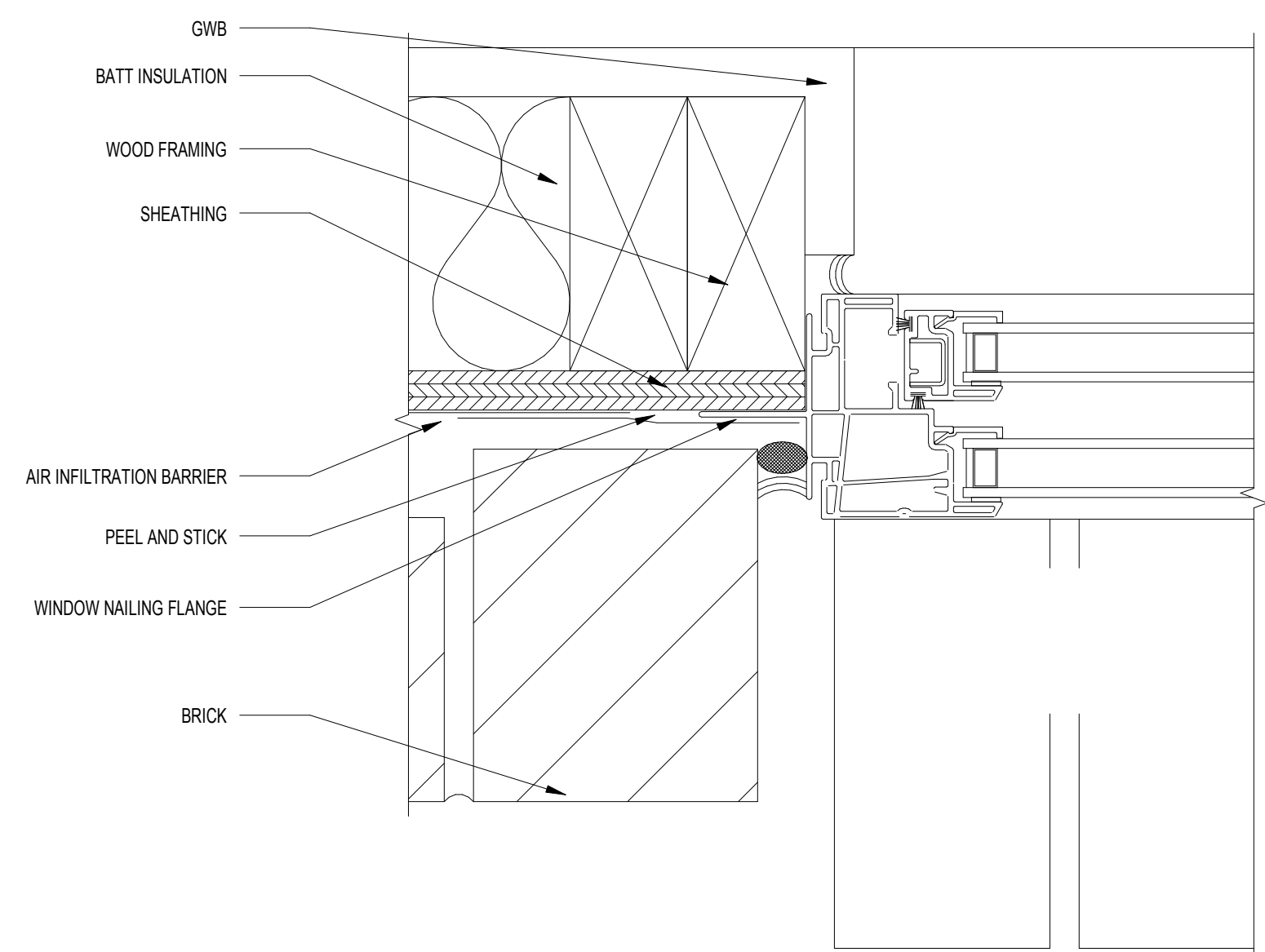
6 HEAD DETAIL AT BRICK VENEER  
SCALE: 1 1/2\"/>



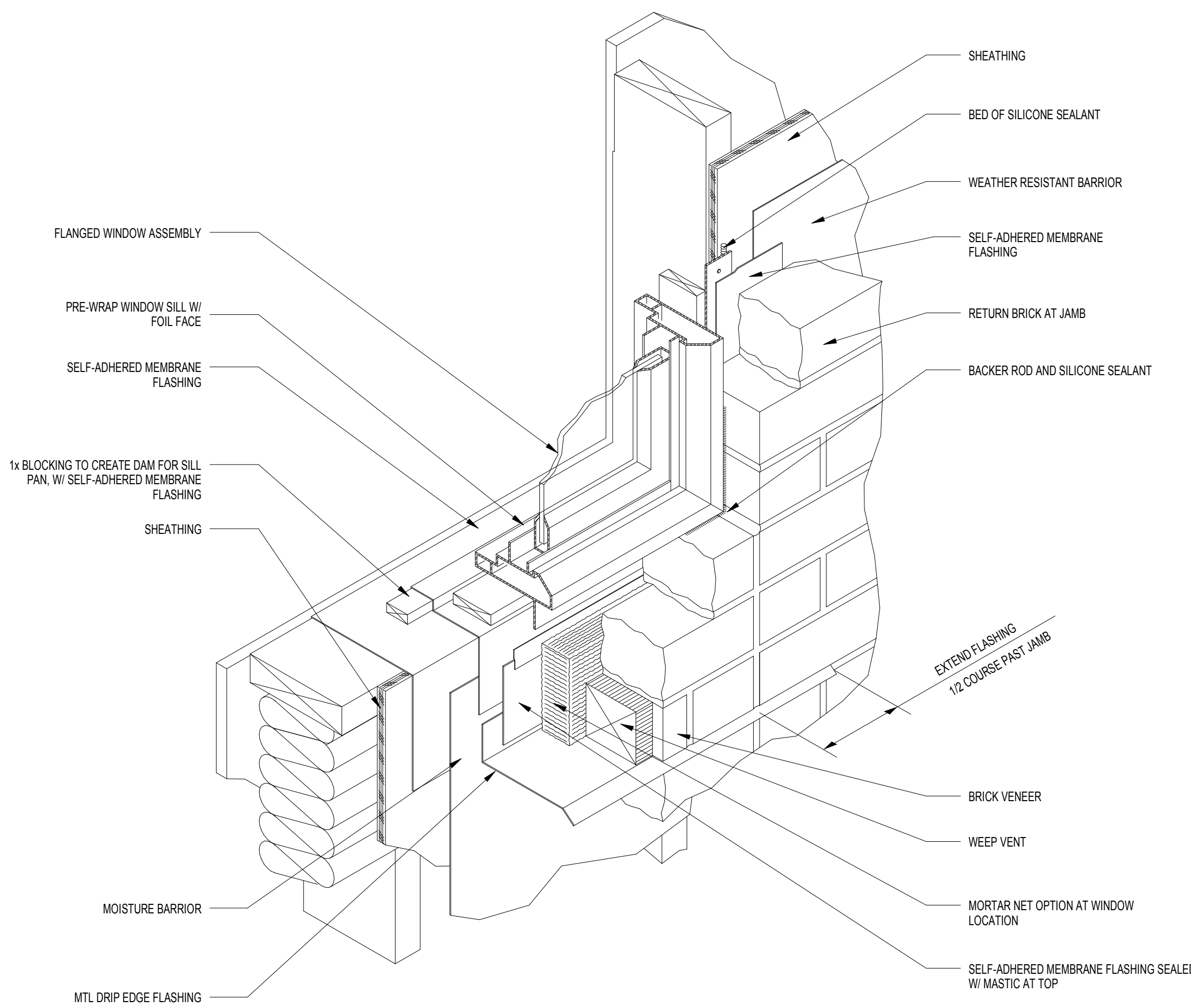
5 END DAM AT HEADER TERMINATION  
SCALE: 1 1/2\"/>



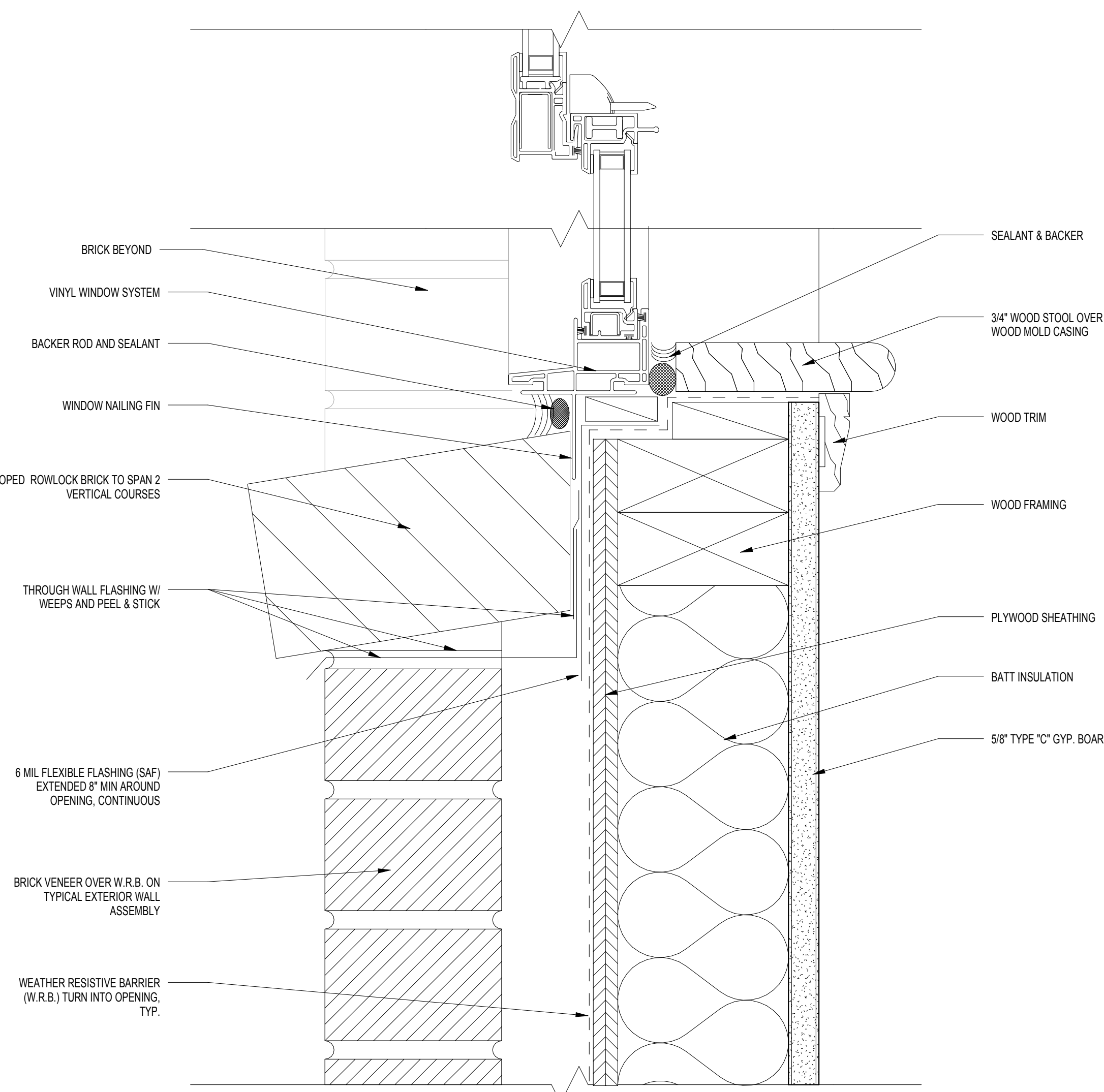
3 WINDOW HEAD DETAIL AT BRICK  
SCALE: 3\"/>



2 WINDOW JAMB DETAIL AT BRICK  
SCALE: 8\"/>



4 SILL TO JAMB DETAIL AT BRICK VENEER  
SCALE: 1 1/2\"/>



1 WINDOW SILL BRICK DETAIL  
SCALE: 8\"/>