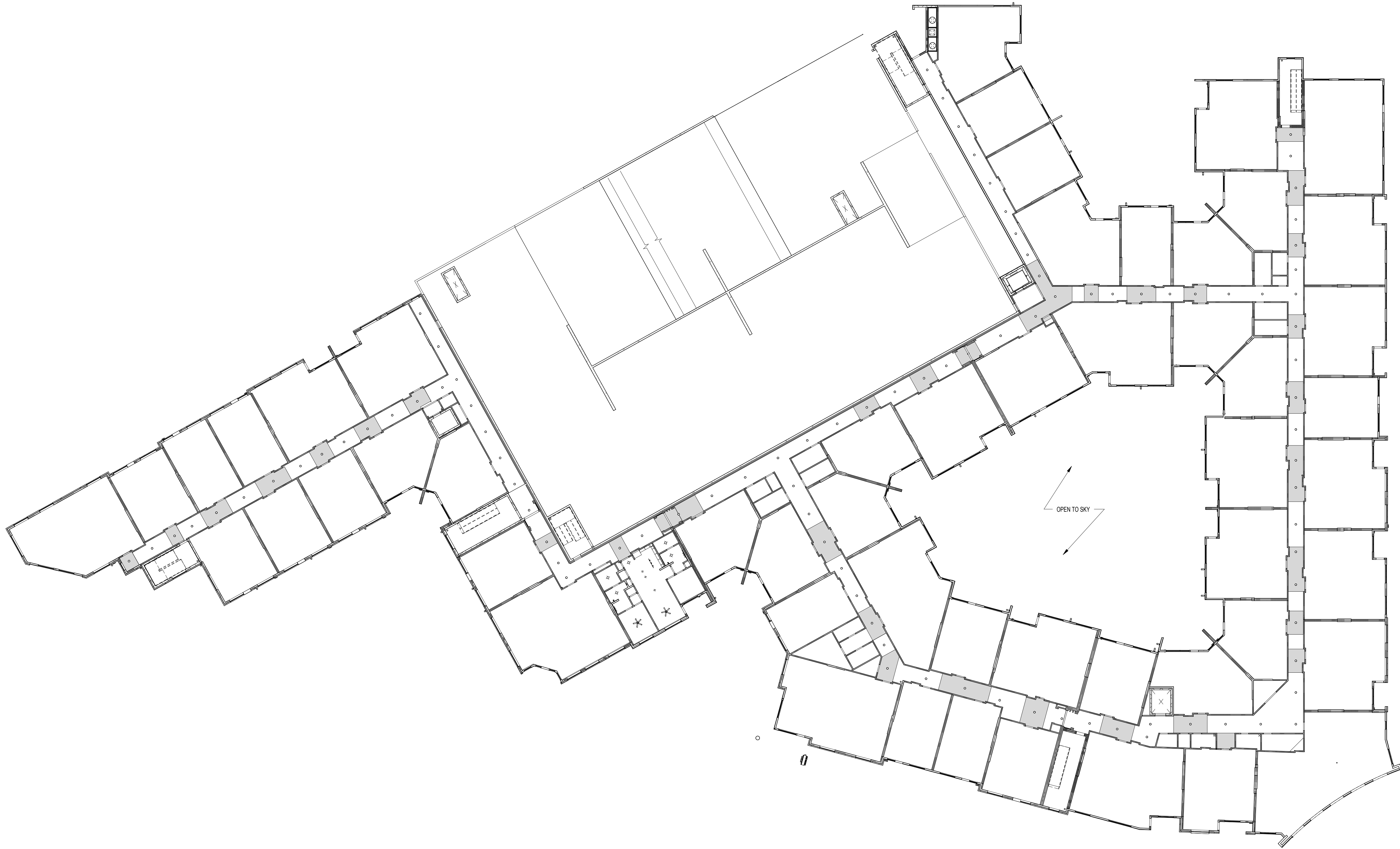
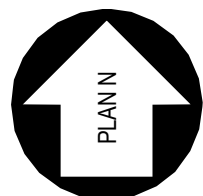
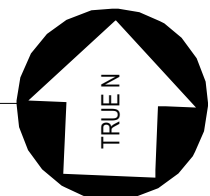
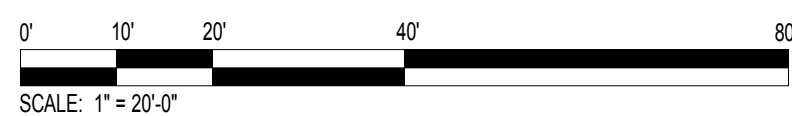


10/4/2017 5:05:38 PM C:\Data File\Revit\2016\1493101 Circle 75 IL R16-C\_pdm1.rvt



1 OVERALL BUILDING RCP - PROJECT LEVEL 5



RCP SYMBOL LEGEND

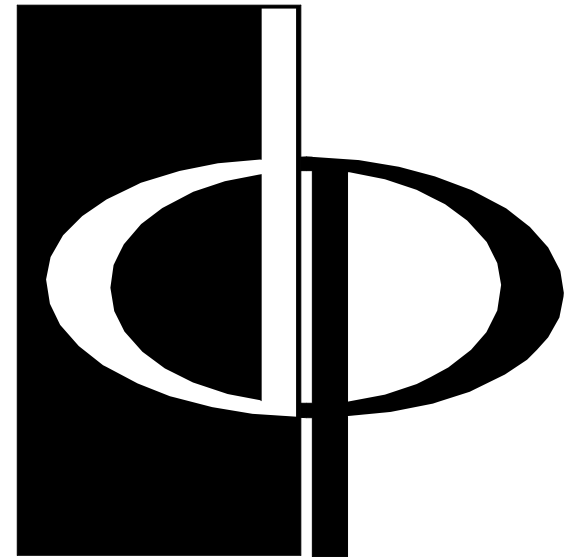
- CEILING FAN AND LIGHT COMBO UNIT
- SURFACE MOUNTED FIXTURE
- PENDANT LIGHTING FIXTURE
- TRACK LIGHTING
- WALL MOUNTED VANITY LIGHT
- RECESSED LIGHTING FIXTURE
- WALL MOUNTED SCONCE FIXTURE (EXTERIOR)
- EXHAUST FAN
- DROPPED CEILING AREA (SEE PLAN FOR HEIGHT)
- FINISHED CEILING HEIGHT A.F.F.

RCP KEYNOTES

- 1. FIXTURE TO BE CENTERED IN SPACE
- 2. PROVIDE MOTION SENSOR

RCP GENERAL NOTES

- 1. COORDINATE FIXTURE METALS WITH ALL OTHER ARCHITECTURAL METALS, TYP.
- 2. ALL SOFFITS WITHIN A SINGLE ROOM ARE THE SAME HEIGHT, TYP., UNLESS NOTED OTHERWISE
- 3. REFER TO ELECTRICAL DWGS. FOR ADDITIONAL INFORMATION
- 4. ALL CEILING HEIGHTS TO BE 9'-0" - UNLESS OTHERWISE NOTED
- 5. CEILING CONTROL JOINTS TO ALIGN WITH WALL CONTROL JOINTS @ 30'-0" +/- O.C. UNLESS OTHERWISE NOTED



THE PRESTON  
PARTNERSHIP, LLC  
A MULTI-DISCIPLINARY DESIGN FIRM

SOUTH TERRACES  
115 PERIMETER CENTER PLACE, SUITE 950  
ATLANTA, GEORGIA 30346  
TELEPHONE: 770 396 7248  
FAX: 770 396 2945

WWW.THEPRESTONPARTNERSHIP.COM  
CONSULTANT

SEAL



PROJECT

RESERVE AT THE  
BALLPARK, PHASE II,  
AKA REVEL AT THE  
BALLPARK  
2885 CRESCENT PKWY  
SMYRNA, GA 30080

FOR



ATLANTIC REALTY  
PARTNERS

3438 PEACHTREE ROAD  
SUITE 1425  
ATLANTA, GA 30326

ISSUES & REVISIONS

ISSUES & REVISIONS	DATE
CONCEPTUAL DESIGN	08/21/2015
SCHEMATIC DESIGN	09/28/2015
CMPI DESIGN DEVELOPMENT	10/15/2015
GMP	04/03/2017
PERMIT SET	05/22/2017
3. BUILDING PERMIT	07/25/2017

DATE 05/22/2017

JOB NUMBER 1493101

DRAWN BY NB

CHECKED BY CWB

SHEET TITLE OVERALL BUILDING RCP - PROJECT LEVEL 5

SHEET NUMBER

A9-05

COMMENTS BUILDING PERMIT RE-SUBMISSION

30X42 © 2017 The Preston Partnership, LLC