

THE PRESTON PARTNERSHIP, LLC
A MULTI-DISCIPLINARY DESIGN FIRM

SOUTH TERRACES
115 PERIMETER CENTER PLACE, SUITE 950
ATLANTA, GEORGIA 30346
TELEPHONE: 770 396 7248
FAX: 770 396 2945

WWW.THEPRESTONPARTNERSHIP.COM
CONSULTANT

SEAL



PROJECT

**RESERVE AT THE BALLPARK, PHASE II,
AKA REVEL AT THE BALLPARK**
2885 CRESCENT PKWY
SMYRNA, GA 30080

FOR



ATLANTIC REALTY PARTNERS

3438 PEACHTREE ROAD
SUITE 1425
ATLANTA, GA 30326

ISSUES & REVISIONS

ISSUES & REVISIONS	DATE
CONCEPTUAL DESIGN	08/21/2015
SCHEMATIC DESIGN	09/29/2015
SMP/DESIGN DEVELOPMENT	10/15/2015
GMP	04/03/2017
PERMIT SET	05/22/2017
1. FM COMMENTS	07/19/2017
3. BUILDING PERMIT	07/25/2017

DATE

JOB NUMBER

DRAWN BY

CHECKED BY

SHEET TITLE

SHEET NUMBER

COMMENTS

BUILDING PERMIT RE-SUBMISSION

30342 © 2017 The Preston Partnership, LLC

REVISION SUMMARY #1

- A. POOL DECK AREA ENLARGED TO INCLUDE PREVIOUS "POOL CIRCULATION" AREA. OCC LOAD REVISED & RECALCULATED AT 1 PERSON PER 30 SQ FT.
- B. REVISED OCCUPANT LOAD OF POOL COURTYARD EXIT DOORS
- C. CHANGED STAIR 1A TO STAIR B

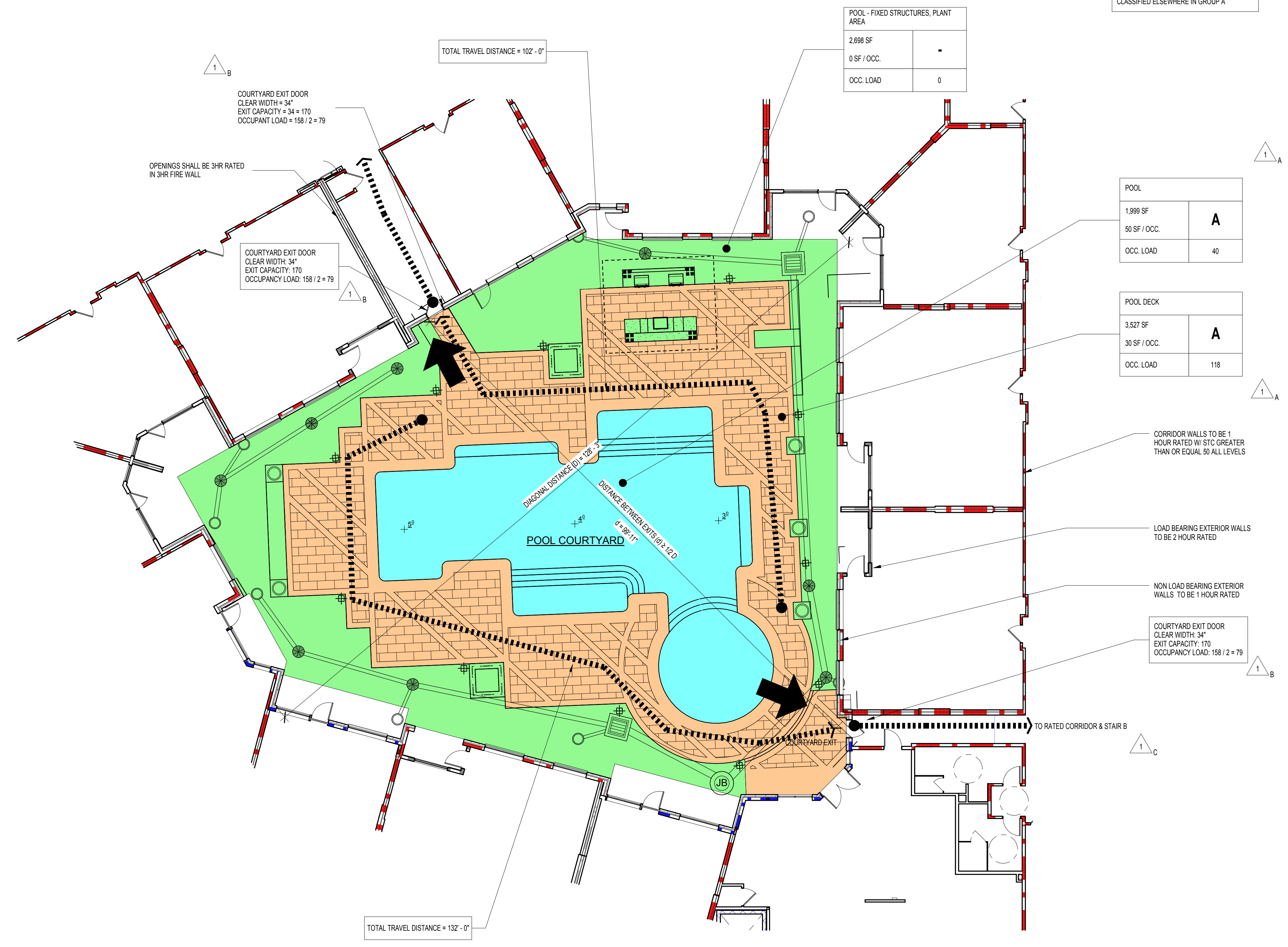
NOTE: PER IBC 303.4, ASSEMBLY GROUP A-3 INCLUDES OTHER ASSEMBLY USES NOT CLASSIFIED ELSEWHERE IN GROUP A

POOL - FIXED STRUCTURES, PLANT AREA	
2,698 SF	-
0 SF / OCC.	-
OCC. LOAD	0

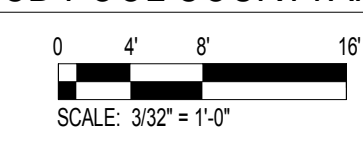
POOL	
1,999 SF	A
50 SF / OCC.	-
OCC. LOAD	40

POOL DECK	
3,527 SF	A
30 SF / OCC.	-
OCC. LOAD	118

TOTAL COURTYARD OCCUPANT LOAD = 158



1 CD POOL COURTYARD



KEYPLAN

