

4. PRODUCT SPECIFIC PRACTICES

- ## 5. WASTE MATERIALS

- ## 6. HAZARDOUS WASTES

- ## 7. SANITARY WASTES

- ## 8. OFFSITE VEHICLE TRACKING

LOCATION MAP

NOT TO SCALE

VEGETATIVE MEASURES:

STRUCTURAL MEASURES:

STRUCTURAL MEASURES (continued):

EROSION CONTROL LINETYPES / SYMBOLS

Erosion Control Certification:


GWSWC LEVEL II DESIGN PROFESSIONAL
GREG MAXEY

START DATE	08/01/2017	THIS SCHEDULE IS TO BE USED FOR PERMITTING PURPOSES ONLY. REFER TO APPROVED PROJECT SCHEDULE FOR EXACT CONSTRUCTION SEQUENCING.											
END DATE	10/31/2017	WEEKS											
DESCRIPTION	1	2	3	4	5	6	7	8	9	10	11	12	
INITIAL EROSION CONTROL BMP INSTALL													
7-DAY LETTER													
S&S INSTALLATION													
CLEARING, GRUBBING, GRADING													
TEMPORARY GRASSING													
PERMANENT GRASSING (IF APPLICABLE)													
INTER. EROSION CONTROL BMPs INSTALL													
MAINT. OF EROSION CONTROL DEVICES													
REMOVAL OF EROS. CONTROL MEASURES													
		</											

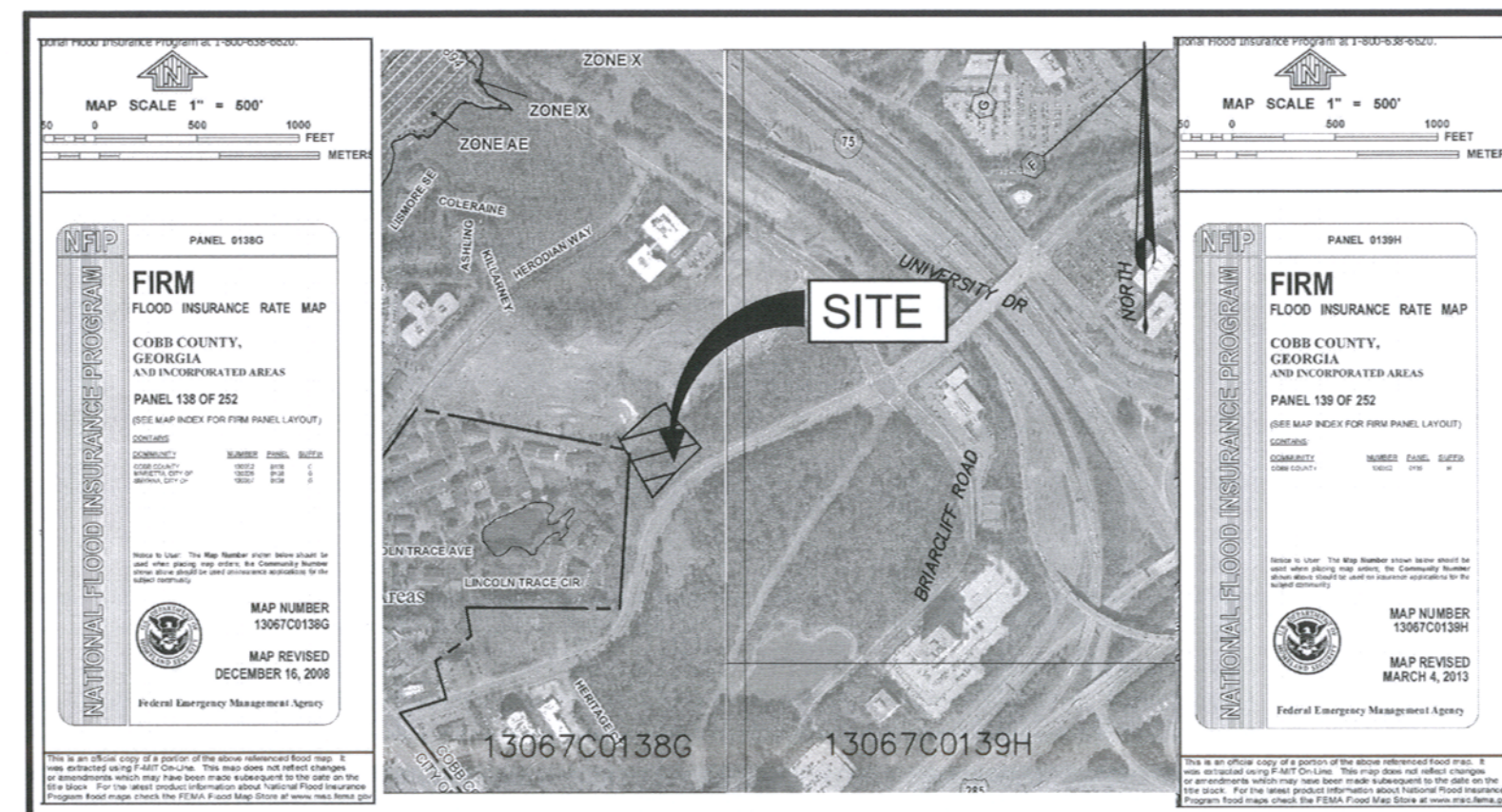
GSWCC GEORGIA SOIL AND WATER
CONSERVATION COMMISSION

GREGORY MAXEY

Level II Certified Design Professional

CERTIFICATION NUMBER 0000000130

ISSUED: 6/03/2017 EXPIRES: 6/03/2020



U.S.G.S. TOPOGRAPHIC MAP
(CITY), GA QUAD MAP

FEMA MAP

PROJECT:	CIRCLE 75 PHASE III COBB COUNTY, GA	CLIENT:	ATLANTIC REALTY PARTNERS, INC	SCALE:	AS NOTED	7																			
							DATE	06/20/2017	DRAWN BY:	SD	6														
												PROJECT NO:	018459003	DESIGNED BY:	SD	5									
																	SHEET NUMBER	C5-03	CHECKED BY:	GMMI	4				
																						TITLE:	EROSION CONTROL NOTES	3378 PEACHTREE RD ATLANTA GA 30326 PHONE: 404-591-2492	DESIGNED BY:
PROJECT NO:	018459003	SHEET NUMBER	C5-03	TITLE:	EROSION CONTROL NOTES	3378 PEACHTREE RD ATLANTA GA 30326 PHONE: 404-591-2492	DESIGNED BY:	SD	3	APPROVED LDP	LDP SUBMITTAL	DATE	BY	REVISIONS	No.										
																DATE	06/20/2017	DRAWN BY:	SD	6					
																					PROJECT NO:	018459003	DESIGNED BY:	SD	5

Kimley»Horn

© 2015 KIMLEY-HORN AND ASSOCIATES, INC.
1000 KIMLEY-HORN DRIVE, SUITE 200
ALPHARETTA, GEORGIA 30009
PHONE (770) 619-4280
WWW.KIMLEY-HORN.COM