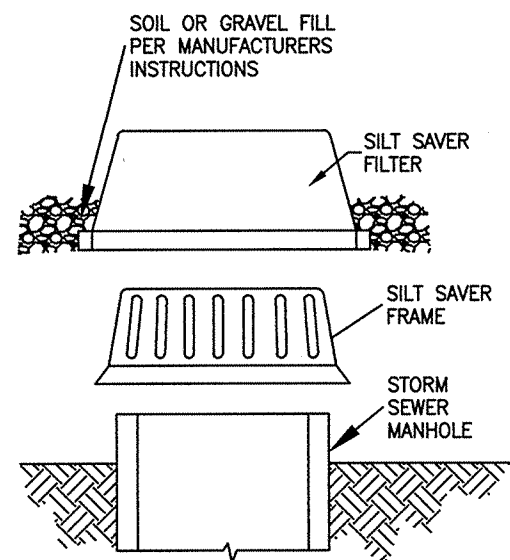


MATERIAL	DEPTH
DRY STRAW OR HAY	2" TO 4"
WOOD WASTE (SAWDUST, BARK, CHIPS)	2" TO 3"
CUTBACK ASPHALT (SLOW CURING)	1200 GAL. / ACRE (1/4 GAL. / SQ.YD.)
BLACK POLYETHYLENE FILM	COMPLETELY COVER AREA; HOLD IN PLACE WITH SOIL ON OUTER EDGE

### Ds1 MULCHING

- EXCAVATE APPROXIMATELY 4" TO 6" BELOW THE TOP OF THE INLET STRUCTURE.
- PLACE THE FRAME ONTO THE INLET STRUCTURE, ENSURING PROPER SEATING OF FRAME TO STRUCTURE.
- SLIDE THE FILTER OVER THE FRAME.
- FILL THE FILTER POCKETS WITH SOIL, #57 GRAVEL OR EQUIVALENT. THE FILTERPOCKETS SHOULD BE COMPLETELY FILLED TO ENSURE A GOOD SEAL BETWEEN THE GROUND AND INLET STRUCTURE.
- BACKFILL AROUND THE FRAME AND FILTER ASSEMBLY IS NOT REQUIRED TO COMPLETE INSTALLATION; HOWEVER, BACKFILLING MAY BE NECESSARY TO COMPLETE EXCAVATION REQUIREMENTS FOR THE SITE.
- THE TRAP SHALL BE INSPECTED DAILY AND AFTER EACH RAIN AND REPAIRS MADE AS NEEDED. SEDIMENT SHALL BE REMOVED WHEN THE SEDIMENT HAS ACCUMULATED TO ONE-HALF THE HEIGHT OF THE TRAP.

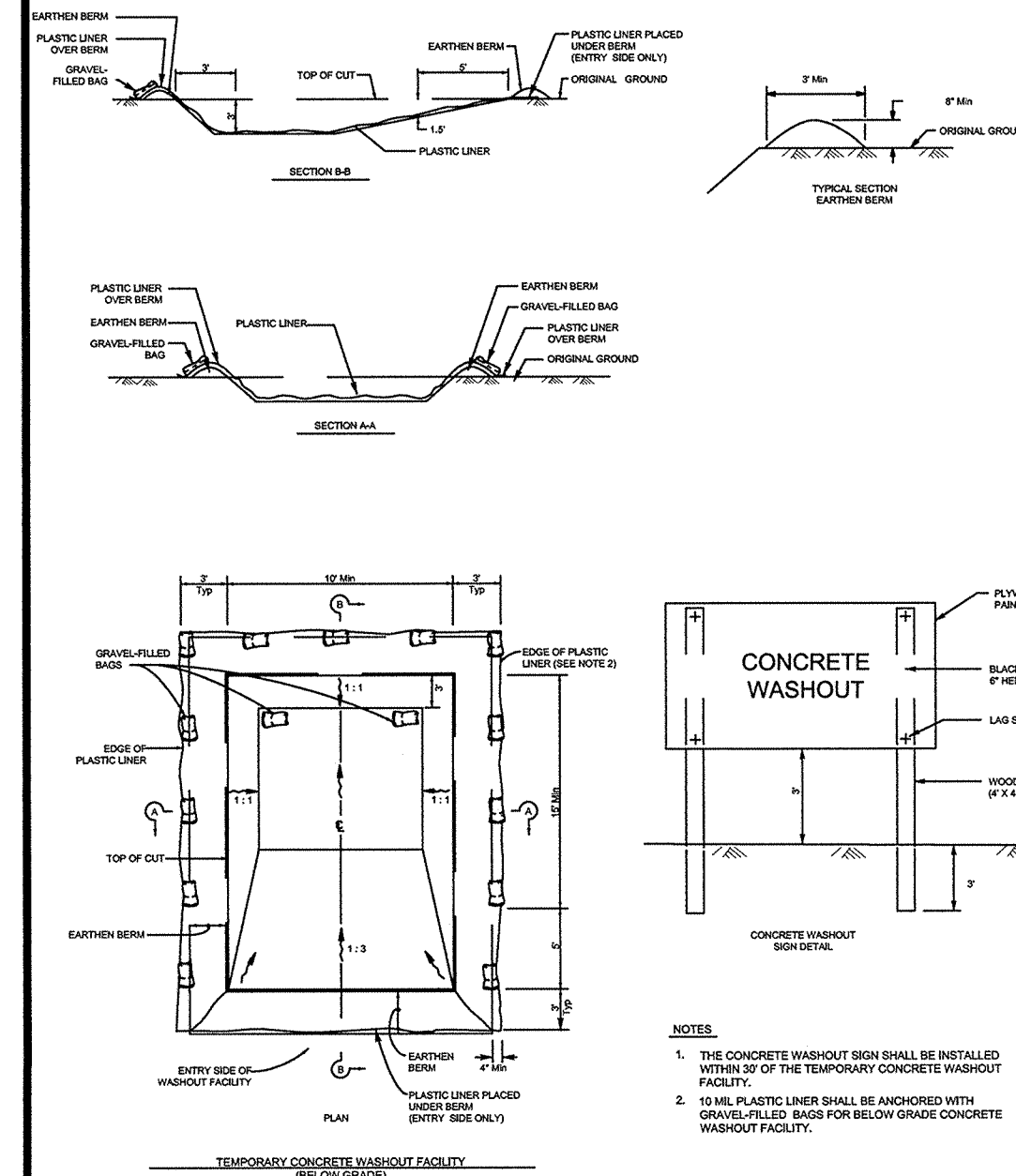


PLANTS, PLANTING RATES, AND PLANTING DATES FOR TEMPORARY COVER OR COMPANION CROPS					
SPECIES	RATES PER 1,000 SQ. FT.	RATES PER ACRE	PLANTING DATES BY REGION		
BARLEY	3.3 LBS.	3 BU.	9/1-10/31	9/15-11/15	10/1-12/31
ORZ	2.9 LBS.	4 BU.	9/15-11/15	9/25-11/25	10/15-11/15
TRICOLE	3.3 LBS.	3 BU.	9/1-10/31	9/15-11/15	10/1-12/31
RYEGRASS, ANNUAL	0.9 LBS.	40 LBS.	8/15-10/31	9/15-11/30	10/1-12/31
RYE	0.6 LBS.	0.5 BU.	8/15-10/31	9/15-11/30	10/1-12/31
LESPEDEZA, ANNUAL	0.9 LBS.	40 LBS.	3/1-3/31	3/1-3/31	2/1-2/28
WINTERBERRY	0.1 LBS.	4 LBS.	4/1-4/31	4/1-4/31	2/1-2/28
SUNGRASS	1.4 LBS.	60 LBS.	4/1-4/31	4/1-4/31	2/1-2/28
MILLET, BROWN TOP	0.9 LBS.	40 LBS.	4/15-5/15	4/15-5/15	4/15-5/15
MILLET, PEARL	1.1 LBS.	50 LBS.	5/15-7/15	4/1-7/31	4/15-5/15
MILLET	4.1 LBS.	3 BU.	9/15-11/15	9/15-11/15	10/15-11/15

FERTILIZER REQUIREMENTS FOR TEMPORARY VEGETATION			
TYPES OF SPECIES	PLANTING YEAR	FERTILIZER RATE (LBS./ACRE)	N TOP DRESSING RATE (LBS./ACRE)
COOL SEASON GRASSES	FIRST	6-12-12	1500
	SECOND	6-12-12	100
COOL SEASON GRASSES & LEGUMES	FIRST	6-12-12	1500
	SECOND	0-10-10	1000
TEMPORARY COVER CROPS	FIRST	10-10-10	30
	SECOND	6-12-12	1500
WARM SEASON GRASSES	FIRST	6-12-12	800
	SECOND	10-10-10	400

MAINTENANCE: THE DISTURBED AREA SHALL BE INSPECTED AT THE END OF EACH DAY. MAINTENANCE SHALL BE REQUIRED TO MAINTAIN APPROPRIATE SOOTH AND SOE COVER OR GREATER OF THE SOIL SURFACE. ALL NECESSARY REPAIRS SHALL BE MADE IMMEDIATELY.

### Ds2 TEMPORARY GRASSING



### CONCRETE WASHOUT DETAIL

N.T.S.

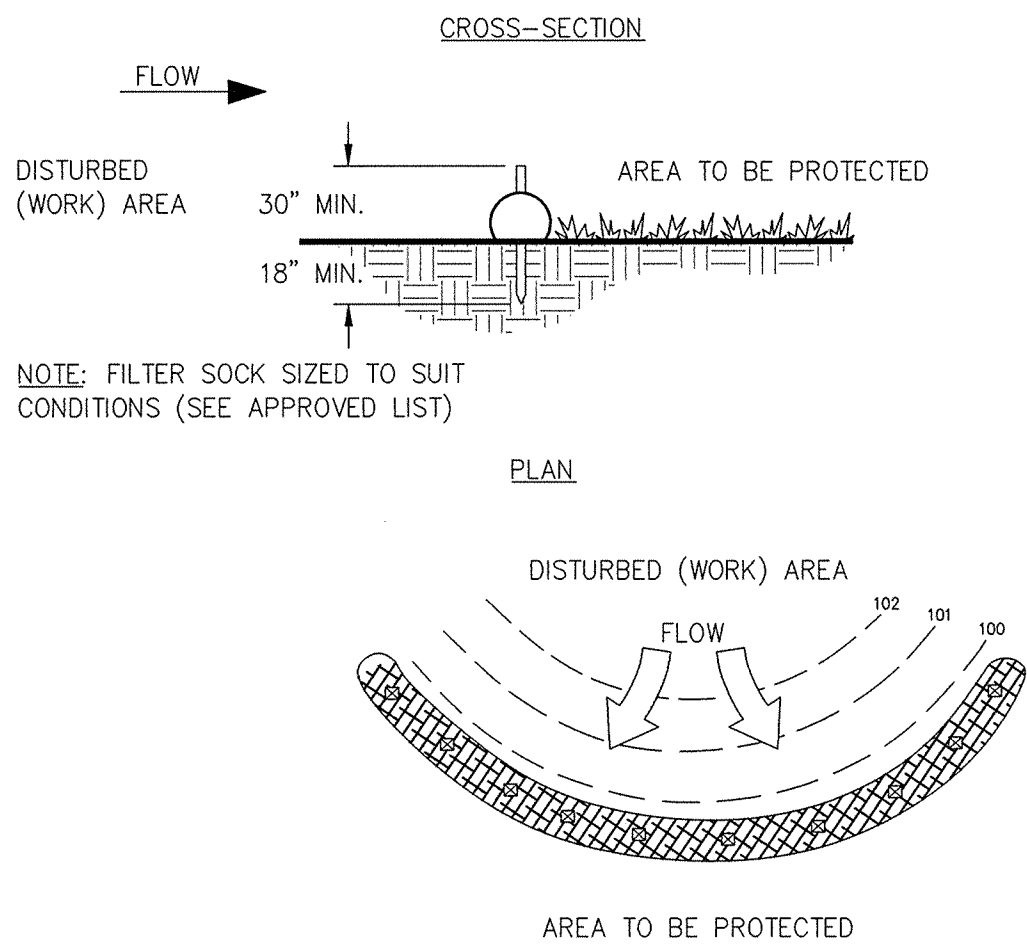
## GEORGIA UNIFORM CODING SYSTEM FOR SOIL EROSION AND SEDIMENT CONTROL PRACTICES GEORGIA SOIL AND WATER CONSERVATION COMMISSION

STRUCTURAL PRACTICES			
CODE	PRACTICE	DETAIL	DESCRIPTION
C1	SEDIMENT TRAP		A small structure that collects sediment and debris from runoff before it enters a water body.
C2	SEDIMENT TRAP		A small structure that collects sediment and debris from runoff before it enters a water body.
C3	SEDIMENT TRAP		A small structure that collects sediment and debris from runoff before it enters a water body.
C4	SEDIMENT TRAP		A small structure that collects sediment and debris from runoff before it enters a water body.
C5	SEDIMENT TRAP		A small structure that collects sediment and debris from runoff before it enters a water body.
C6	SEDIMENT TRAP		A small structure that collects sediment and debris from runoff before it enters a water body.
C7	SEDIMENT TRAP		A small structure that collects sediment and debris from runoff before it enters a water body.
C8	SEDIMENT TRAP		A small structure that collects sediment and debris from runoff before it enters a water body.
C9	SEDIMENT TRAP		A small structure that collects sediment and debris from runoff before it enters a water body.
C10	SEDIMENT TRAP		A small structure that collects sediment and debris from runoff before it enters a water body.
C11	SEDIMENT TRAP		A small structure that collects sediment and debris from runoff before it enters a water body.
C12	SEDIMENT TRAP		A small structure that collects sediment and debris from runoff before it enters a water body.
C13	SEDIMENT TRAP		A small structure that collects sediment and debris from runoff before it enters a water body.
C14	SEDIMENT TRAP		A small structure that collects sediment and debris from runoff before it enters a water body.
C15	SEDIMENT TRAP		A small structure that collects sediment and debris from runoff before it enters a water body.
C16	SEDIMENT TRAP		A small structure that collects sediment and debris from runoff before it enters a water body.
C17	SEDIMENT TRAP		A small structure that collects sediment and debris from runoff before it enters a water body.
C18	SEDIMENT TRAP		A small structure that collects sediment and debris from runoff before it enters a water body.
C19	SEDIMENT TRAP		A small structure that collects sediment and debris from runoff before it enters a water body.
C20	SEDIMENT TRAP		A small structure that collects sediment and debris from runoff before it enters a water body.
C21	SEDIMENT TRAP		A small structure that collects sediment and debris from runoff before it enters a water body.
C22	SEDIMENT TRAP		A small structure that collects sediment and debris from runoff before it enters a water body.
C23	SEDIMENT TRAP		A small structure that collects sediment and debris from runoff before it enters a water body.
C24	SEDIMENT TRAP		A small structure that collects sediment and debris from runoff before it enters a water body.
C25	SEDIMENT TRAP		A small structure that collects sediment and debris from runoff before it enters a water body.
C26	SEDIMENT TRAP		A small structure that collects sediment and debris from runoff before it enters a water body.
C27	SEDIMENT TRAP		A small structure that collects sediment and debris from runoff before it enters a water body.
C28	SEDIMENT TRAP		A small structure that collects sediment and debris from runoff before it enters a water body.
C29	SEDIMENT TRAP		A small structure that collects sediment and debris from runoff before it enters a water body.
C30	SEDIMENT TRAP		A small structure that collects sediment and debris from runoff before it enters a water body.
C31	SEDIMENT TRAP		A small structure that collects sediment and debris from runoff before it enters a water body.
C32	SEDIMENT TRAP		A small structure that collects sediment and debris from runoff before it enters a water body.
C33	SEDIMENT TRAP		A small structure that collects sediment and debris from runoff before it enters a water body.
C34	SEDIMENT TRAP		A small structure that collects sediment and debris from runoff before it enters a water body.
C35	SEDIMENT TRAP		A small structure that collects sediment and debris from runoff before it enters a water body.
C36	SEDIMENT TRAP		A small structure that collects sediment and debris from runoff before it enters a water body.
C37	SEDIMENT TRAP		A small structure that collects sediment and debris from runoff before it enters a water body.
C38	SEDIMENT TRAP		A small structure that collects sediment and debris from runoff before it enters a water body.
C39	SEDIMENT TRAP		A small structure that collects sediment and debris from runoff before it enters a water body.
C40	SEDIMENT TRAP		A small structure that collects sediment and debris from runoff before it enters a water body.
C41	SEDIMENT TRAP		A small structure that collects sediment and debris from runoff before it enters a water body.
C42	SEDIMENT TRAP		A small structure that collects sediment and debris from runoff before it enters a water body.
C43	SEDIMENT TRAP		A small structure that collects sediment and debris from runoff before it enters a water body.
C44	SEDIMENT TRAP		A small structure that collects sediment and debris from runoff before it enters a water body.
C45	SEDIMENT TRAP		A small structure that collects sediment and debris from runoff before it enters a water body.
C46	SEDIMENT TRAP		A small structure that collects sediment and debris from runoff before it enters a water body.
C47	SEDIMENT TRAP		A small structure that collects sediment and debris from runoff before it enters a water body.
C48	SEDIMENT TRAP		A small structure that collects sediment and debris from runoff before it enters a water body.
C49	SEDIMENT TRAP		A small structure that collects sediment and debris from runoff before it enters a water body.
C50	SEDIMENT TRAP		A small structure that collects sediment and debris from runoff before it enters a water body.
C51	SEDIMENT TRAP		A small structure that collects sediment and debris from runoff before it enters a water body.
C52	SEDIMENT TRAP		A small structure that collects sediment and debris from runoff before it enters a water body.
C53	SEDIMENT TRAP		A small structure that collects sediment and debris from runoff before it enters a water body.
C54	SEDIMENT TRAP		A small structure that collects sediment and debris from runoff before it enters a water body.
C55	SEDIMENT TRAP		A small structure that collects sediment and debris from runoff before it enters a water body.
C56	SEDIMENT TRAP		A small structure that collects sediment and debris from runoff before it enters a water body.
C57	SEDIMENT TRAP		A small structure that collects sediment and debris from runoff before it enters a water body.
C58	SEDIMENT TRAP		A small structure that collects sediment and debris from runoff before it enters a water body.
C59	SEDIMENT TRAP		A small structure that collects sediment and debris from runoff before it enters a water body.
C60	SEDIMENT TRAP		A small structure that collects sediment and debris from runoff before it enters a water body.
C61	SEDIMENT TRAP		A small structure that collects sediment and debris from runoff before it enters a water body.
C62	SEDIMENT TRAP		A small structure that collects sediment and debris from runoff before it enters a water body.
C63	SEDIMENT TRAP		A small structure that collects sediment and debris from runoff before it enters a water body.
C64	SEDIMENT TRAP		A small structure that collects sediment and debris from runoff before it enters a water body.
C65	SEDIMENT TRAP		A small structure that collects sediment and debris from runoff before it enters a water body.
C66	SEDIMENT TRAP		A small structure that collects sediment and debris from runoff before it enters a water body.
C67	SEDIMENT TRAP		A small structure that collects sediment and debris from runoff before it enters a water body.
C68	SEDIMENT TRAP		A small structure that collects sediment and debris from runoff before it enters a water body.
C69	SEDIMENT TRAP		A small structure that collects sediment and debris from runoff before it enters a water body.
C70	SEDIMENT TRAP		A small structure that collects sediment and debris from runoff before it enters a water body.
C71	SEDIMENT TRAP		A small structure that collects sediment and debris from runoff before it enters a water body.
C72	SEDIMENT TRAP		A small structure that collects sediment and debris from runoff before it enters a water body.
C73	SEDIMENT TRAP		A small structure that collects sediment and debris from runoff before it enters a water body.
C74	SEDIMENT TRAP		A small structure that collects sediment and debris from runoff before it enters a water body.
C75	SEDIMENT TRAP		A small structure that collects sediment and debris from runoff before it enters a water body.
C76	SEDIMENT TRAP		A small structure that collects sediment and debris from runoff before it enters a water body.
C77	SEDIMENT TRAP		A small structure that collects sediment and debris from runoff before it enters a water body.
C78	SEDIMENT TRAP		A small structure that collects sediment and debris from runoff before it enters a water body.
C79	SEDIMENT TRAP		A small structure that collects sediment and debris from runoff before it enters a water body.
C80	SEDIMENT TRAP		A small structure that collects sediment and debris from runoff before it enters a water body.
C81	SEDIMENT TRAP		A small structure that collects sediment and debris from runoff before it enters a water body.
C82	SEDIMENT TRAP		A small structure that collects sediment and debris from runoff before it enters a water body.
C83	SEDIMENT TRAP		A small structure that collects sediment and debris from runoff before it enters a water body.
C84	SEDIMENT TRAP		A small structure that collects sediment and debris from runoff before it enters a water body.
C85	SEDIMENT TRAP		A small structure that collects sediment and debris from runoff before it enters a water body.
C86	SEDIMENT TRAP		A small structure that collects sediment and debris from runoff before it enters a water body.
C87	SEDIMENT TRAP		A small structure that collects sediment and debris from runoff before it enters a water body.
C88	SEDIMENT TRAP		A small structure that collects sediment and debris from runoff before it enters a water body.
C89	SEDIMENT TRAP		A small structure that collects sediment and debris from runoff before it enters a water body.
C90	SEDIMENT TRAP		A small structure that collects sediment and debris from runoff before it enters a water body.
C91	SEDIMENT TRAP		A small structure that collects sediment and debris from runoff before it enters a water body.
C92	SEDIMENT TRAP		A small structure that collects sediment and debris from runoff before it enters a water body.
C93	SEDIMENT TRAP		A small structure that collects sediment and debris from runoff before it enters a water body.
C94	SEDIMENT TRAP		A small structure that collects sediment and debris from runoff before it enters a water body.
C95	SEDIMENT TRAP		A small structure that collects sediment and debris from runoff before it enters a water body.
C96	SEDIMENT TRAP		A small structure that collects sediment and debris from runoff before it enters a water body.
C97	SEDIMENT TRAP		A small structure that collects sediment and debris from runoff before it enters a water body.
C98	SEDIMENT TRAP		A small structure that collects sediment and debris from runoff before it enters a water body.
C99	SEDIMENT TRAP		A small structure that collects sediment and debris from runoff before it enters a water body.
C100	SEDIMENT TRAP		A small structure that collects sediment and debris from runoff before it enters a water body.

## EROSION AND SEDIMENT CONTROL

CFS

### COMPOST FILTER SOCK



NOTE: FILTER SOCK SIZED TO SUIT CONDITIONS (SEE APPROVED LIST)

### Sd2-SS INLET SEDIMENT TRAP - SILT SAVER

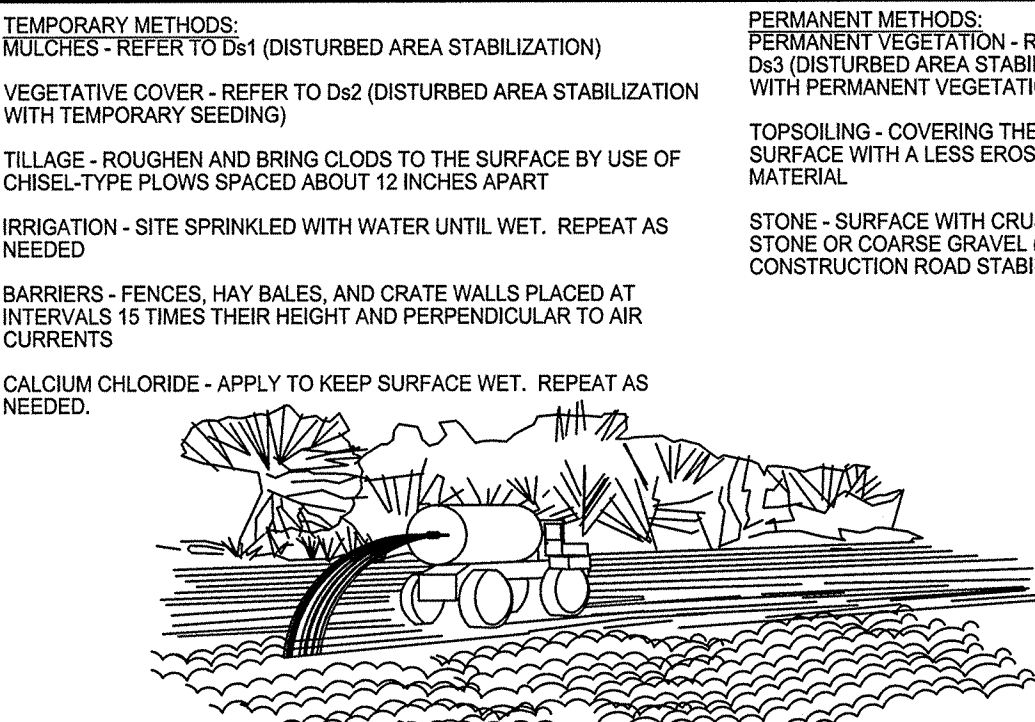
N.T.S.

PLANTS, PLANTING RATES, AND PLANTING DATES FOR PERMANENT COVER						
TYPES OF SPECIES	RATES PER 1,000 SQ. FT.	PER ACRE	PLANTING DATES BY REGION			REMARKS
			M-L	P	C	
BAHIA, PENSACOLA ALONE OR WITH TEMPORARY COVER WITH PERENNIALS	60 LBS. 30 LBS.	1.4 LBS. 0.7 LBS.		4/1-5/31	3/1-5/31	LOW GROWING AND SOD FORMING. ALLOW TO ESTABLISH. WILL SPREAD INTO BERMUDA LAWNS.
BAHIA, WILMINGTON ALONE OR WITH TEMPORARY COVER WITH PERENNIALS	60 LBS. 30 LBS.	1.4 LBS. 0.7 LBS.	3/15-5/31	3/1-5/31	-	LOW GROWING AND SOD FORMING. ALLOW TO ESTABLISH. WILL SPREAD INTO BERMUDA LAWNS.
BERMUDA, COMMON (HULLED SEED) ALONE OR WITH TEMPORARY COVER WITH PERENNIALS	10 LBS. 6 LBS.	0.2 LBS. 0.1 LBS.	-	4/1-5/31	3/15-5/31	QUICK COVER, LOW GROWING AND SOD FORMING. NEEDS FULL SUN
BERMUDA, COMMON (UNHULLED SEED) ALONE OR WITH TEMPORARY COVER WITH PERENNIALS	10 LBS. 6 LBS.	0.2 LBS. 0.1 LBS.	-	10/1-2/28	11/1-1/31	PLANT WITH WINTER ANNUALS PLANT WITH TALL FESCUE
BERMUDA SPRIGS TEMPORARY COVER	40 CF SOD PLUS 3' X 3'	0.9 CF	4/15-6/15	4/1-6/15	4/1-5/31	1 CF = 650 SPRIGS 1 BU. = 1.25 CF OR 800 SPRIGS.
CENTPEDE BLOCK SOD ONLY			-	11/1-5/31	11/1-5/31	DROUGHT TOLERANT; FULL SUN OR PARTIAL SHADE; EFFECTIVE ADJACENT TO CONCRETE AND IN CONCENTRATED FLOW AREAS; IRRIGATION NEEDED UNTIL FULLY ESTABLISHED; DO NOT PLANT NEAR PASTURES
CROWN VETCH WITH WINTER ANNUALS OR COOL WINTER GRASSES	15 LBS.	0.3 LBS.	9/1-10/15	9/1-10/15	-	MIX WITH 30 LBS. TALL FESCUE OF 15 LBS. RYE; INOCULATE SEED; ONLY NORTH OF ATLANTA, DENSE GROWTH, DROUGHT TOLERANT AND FIRE RESISTANT
FESCUE, TALL ALONE WITH OTHER PERENNIALS	50 LBS. 30 LBS.	1.1 LBS. 0.7 LBS.	3/1-4/1 OR - 8/15-10/15	9/1-10/15 OR - 2/15-4/15	-	NOT FOR DROUGHTY SOILS. MIX WITH PERENNIAL LESPEDEZAS OR CROWN VETCH APPLY TOPDRESSING IN SPRING FOLLOWING FALL PLANTINGS. NOT FOR HEAVY USE AREAS OR ATHLETIC FIELDS. 227,000 SEED PER POUND.
LESPEDEZA, SERICEA SCARIFIED	60 LBS.	1.4 LBS.	4/1-5/31	3/15-5/31	3/1-5/15	WIDELY ADAPTED AND LOW MAINTENANCE. TAKES 2-3 YEARS TO ESTABLISH. EXCELLENT ON ROADBANKS. INOCULATE SEED WITH EL INOCULANT. MIX WITH WEEPING LOVEGRASS, COMMON BERMUDA, HAHIA, OR TALL FESCUE.
UNSCARIFIED	75 LBS.	1.7 LBS.	9/1-2/28	9/1-2/28	9/1-2/28	MIX WITH TALL FESCUE OR WINTER ANNUALS
SEED-BEARING HAY	3 TONS	138 LBS.	10/1-2/28	10/1-1/31	9/15-1/15	CUT WHEN SEED IS MATURE, BUT BEFORE IT SHATTERS. ADD TALL FESCUE OR WINTER ANNUALS.
LESPEDEZA, AMBRO VIRGETA OR APPALOW SCARIFIED UNSCARIFIED	60 LBS. 75 LBS.	1.4 LBS. 1.7 LBS.	4/1-5/31 9/1-2/28	3/15-5/31 9/1-2/28	3/15-5/15 9/1-2/28	SPREADING GROWTH WITH HEIGHT OF 18"-24". GOOD IN URBAN AREAS. MIX WITH WEEPING LOVEGRASS, COMMON BERMUDA, BAHIA, TALL FESCUE, OR WINTER ANNUALS. DO NOT MIX WITH SERICEA LESPEDEZA. SLOW TO DEVELOP SOLID STANDS. INOCULATE SEED WITH EL INOCULANT.
LESPEDEZA, SHRUB (LESPEDEZA BICOLOR OR LESPEDEZA THUMBERGLI) PLANTS	3' X 3' SPACING		10/1-3/31	11/1-3/15	11/15-2/28	PLANT IN SMALL CLUMPS FOR WILDLIFE FOOD AND COVER.
LONGGRASS, WEEPING ALONE WITH OTHER PERENNIALS	4 LBS. 2 LBS.	0.1 LBS. 0.05 LBS.	4/1-5/31	3/15-5/31	3/1-5/31	QUICK COVER, DROUGHT TOLERANT. GROWS WELL WITH SERICEA LESPEDEZA ON ROADBANKS.
MAIDENCANE SPRIGS	2' X 3' SPACING		2/1-3/31	2/1-3/31	2/1-3/31	FOR VERY WET SITES SUCH AS RIVERBANKS AND SHORELINES. DIG SPRIGS LOCALLY. MAY CLOG CHANNELS.
PANICGRASS, ATLANTIC COASTAL	20 LBS.	0.5 LBS.	-	3/1-4/30	3/1-4/30	GROWS WELL ON COASTAL SAND DUNES, BORROW AREAS, AND GRAVEL PITS. PROVIDES WINTER COVER FOR WILDLIFE. MIX WITH SERICEA LESPEDEZA EXCEPT ON SAND DUNES.
REED CANARY GRASS ALONE WITH OTHER PERENNIALS	50 LBS. 30 LBS.	1.1 LBS. 0.7 LBS.	6/15-10/15	9/1-10/15	-	GROWS SIMILAR TO TALL FESCUE
SUNFLOWER, 'ATZEE' MAXIMILIAN	10 LBS.	0.2 LBS.	4/15-5/31	4/15-5/31	4/1-5/31	MIX WITH WEEPING LOVEGRASS, LEGUMES, OR OTHER LOW GROWING GRASSES.

FERTILIZER REQUIREMENTS FOR PERMANENT VEGETATION				
TYPES OF SPECIES	PLANTING YEAR	FERTILIZER RATE (LBS./ACRE)	N TOP DRESSING RATE (LBS./ACRE)	
COOL SEASON GRASSES	FIRST	6-12-12	1500	0-50
	SECOND	6-12-12	1000	30-100
COOL SEASON GRASSES & LEGUMES	FIRST	6-12-12	1500	0-50
	SECOND	6-12-12	1000	30-100
GROUND COVERS	FIRST	6-12-12	1500	0-50
	SECOND	6-12-12	1000	30-100
PINE SEEDLINGS	FIRST	20-10-5	ONE 21-GRAM PELLET PER SEEDLING PLACED IN THE PLANTING HOLE	-
	SECOND	20-10-5	ONE 21-GRAM PELLET PER SEEDLING PLACED IN THE PLANTING HOLE	-
SHRUB LESPEDEZA	FIRST	0-10-10	700	30
	SECOND	0-10-10	700	30
TEMPORARY GROUND COVER CROPS SEEDING ALONE	FIRST	6-12-12	1500	50-100
	SECOND	6-12-12	1000	50-100
WARM SEASON GRASSES	FIRST	6-12-12	1500	50
	SECOND	6-12-12	1000	50
WARM SEASON GRASSES & LEGUMES	FIRST	6-12-12	1500	50
	SECOND	6-12-12	1000	50

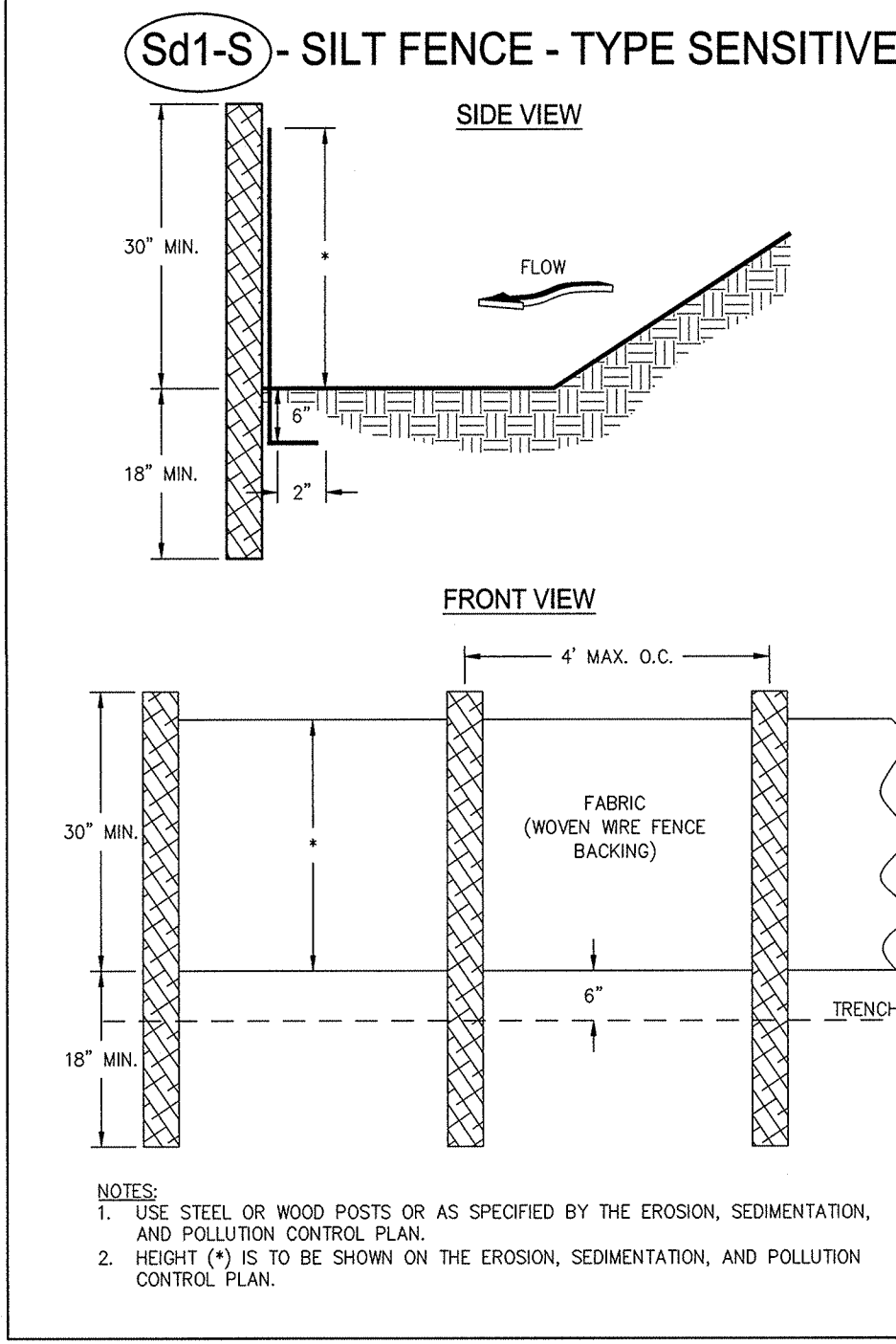
MAINTENANCE FERTILIZER RATES AND SECOND YEAR FERTILIZER RATES ARE LISTED IN THE TABLE ABOVE.

### Ds3 PERMANENT GRASSING



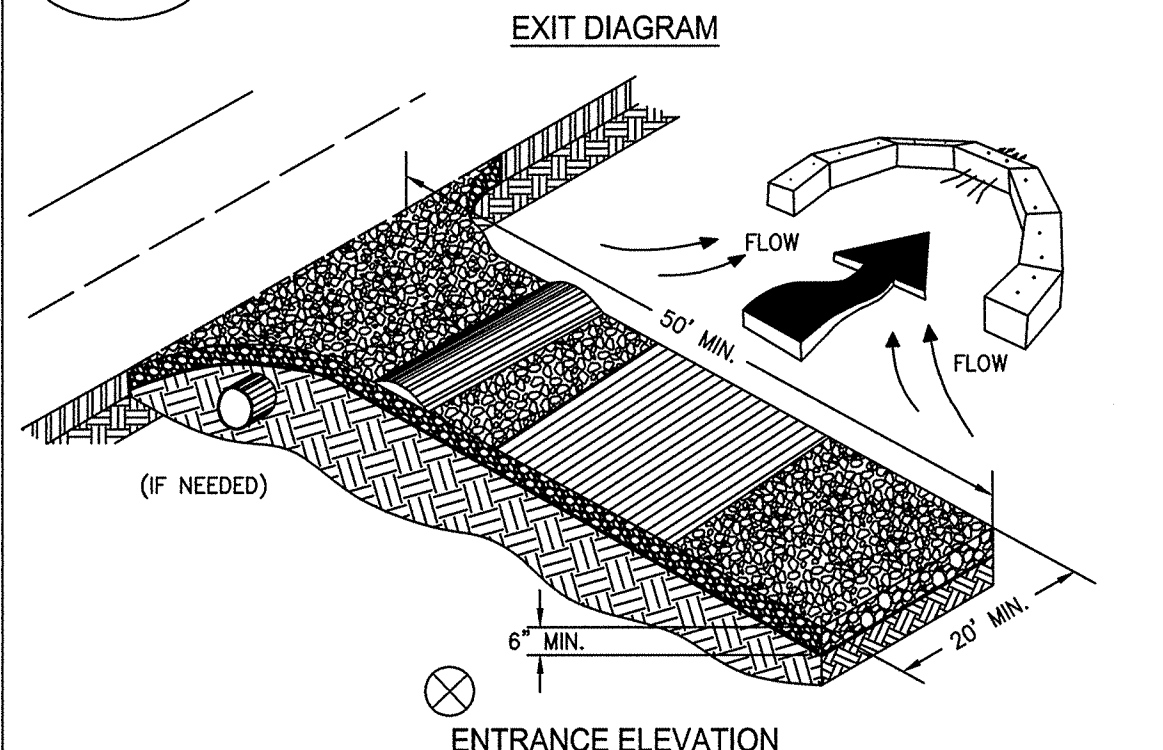
### Du DUST CONTROL

N.T.S.



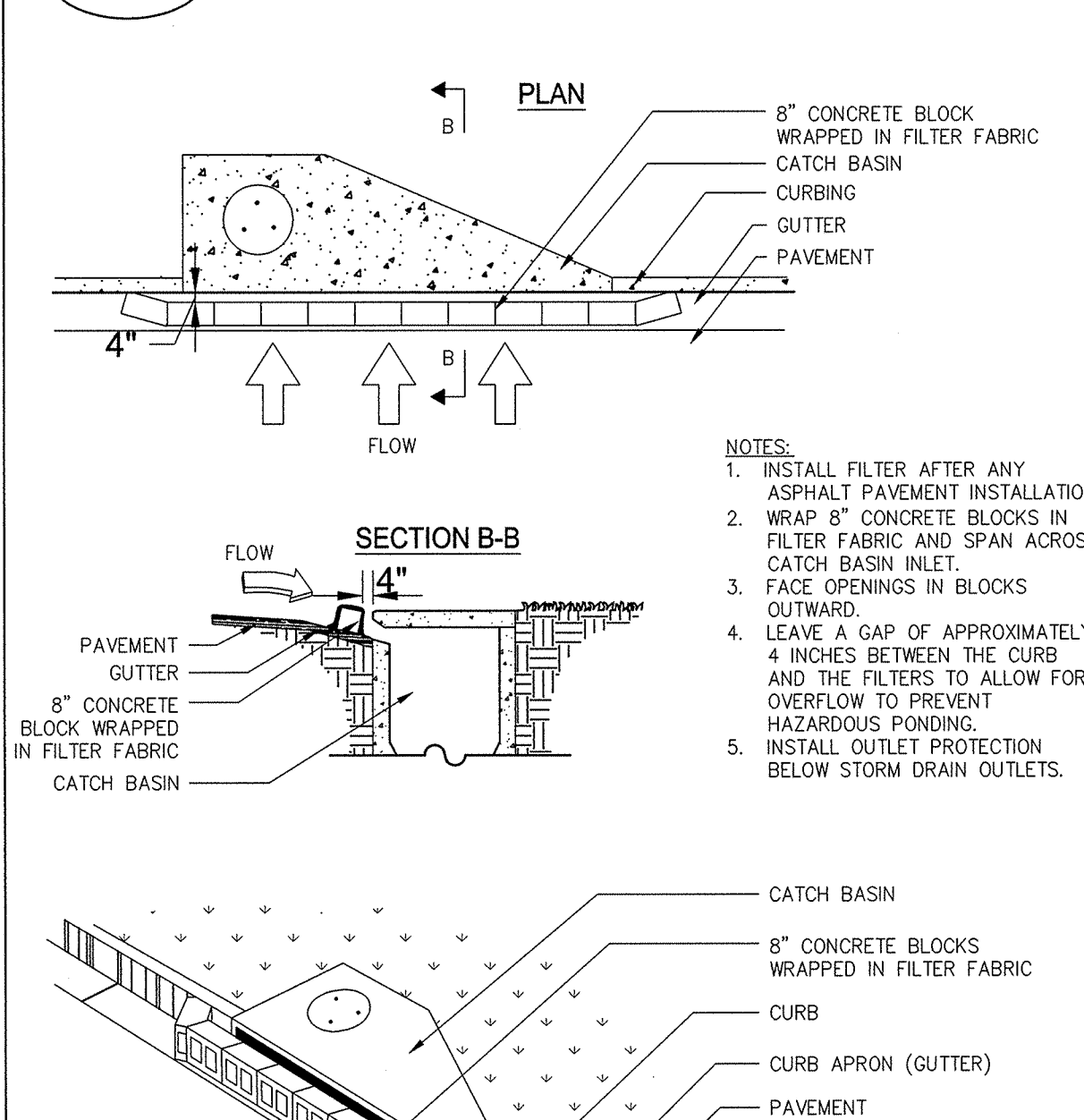
- NOTES:
- USE STEEL OR WOOD POSTS OR AS SPECIFIED BY THE EROSION, SEDIMENTATION, AND POLLUTION CONTROL PLAN.
  - HEIGHT (H) IS TO BE SHOWN ON THE EROSION, SEDIMENTATION, AND POLLUTION CONTROL PLAN.

### Co CRUSHED STONE CONSTRUCTION EXIT



- NOTES:
- AVOID LOCATING ON STEEP SLOPES OR AT CURVES ON PUBLIC ROADS.
  - REMOVE ALL VEGETATION AND OTHER UNSUITABLE MATERIAL FROM THE FOUNDATION AREA, GRADE, AND CROWN FOR POSITIVE DRAINAGE.
  - AGGREGATE SIZE SHALL BE IN ACCORDANCE WITH NATIONAL STONE ASSOCIATION R-2 (1.5"-3.5" STONE).
  - GRAVEL PAD SHALL HAVE A MINIMUM THICKNESS OF 6".
  - PAD WIDTH SHALL BE EQUAL FULL WIDTH AT ALL POINTS OF VEHICULAR EGRESS, BUT NO LESS THAN 20'.
  - A DIVERSION RIDGE SHOULD BE CONSTRUCTED WHEN GRADE TOWARD PAVED AREA IS GREATER THAN 2%.
  - INSTALL PIPE UNDER THE ENTRANCE IF NEEDED TO MAINTAIN DRAINAGE DITCHES.
  - WHEN WASHING IS REQUIRED, IT SHOULD BE DONE ON AN AREA STABILIZED WITH CRUSHED STONE THAT DRAINS INTO AN APPROVED SEDIMENT TRAP OR SEDIMENT BASIN (OVERT ALL SURFACE RUNOFF AND DRAINAGE FROM THE ENTRANCE TO A SEDIMENT CONTROL DEVICE).
  - WASHRACKS AND/OR THE WASHERS MAY BE REQUIRED DEPENDING ON SCALE AND CIRCUMSTANCE. IF NECESSARY, WASHRACK DESIGN MAY CONSIST OF ANY MATERIAL SUITABLE FOR TRUCK TRAFFIC THAT REMOVE MUD AND DIRT.
  - MAINTAIN AREA IN A WAY THAT PREVENTS TRACKING AND/OR FLOW OF MUD ONTO PUBLIC RIGHTS-OF-WAYS. THIS MAY REQUIRE TOP DRESSING, REPAIR AND/OR CLEAVOUT OF ANY MEASURES USED TO TRAP SEDIMENT.

### Sd2-P - CURB INLET FILTER "PIGS IN BLANKET"



- NOTES:
- INSTALL FILTER AFTER ANY ASPHALT PAVEMENT INSTALLATION.
  - WRAP 8" CONCRETE BLOCKS IN FILTER FABRIC AND SPAN ACROSS CATCH BASIN INLET.
  - FACE OPENINGS IN BLOCKS OUTWARD.
  - LEAVE A GAP OF APPROXIMATELY 4 INCHES BETWEEN THE CURB AND THE FILTERS TO ALLOW FOR OVERFLOW TO PREVENT HAZARDOUS PONDING.
  - INSTALL OUTLET PROTECTION BELOW STORM DRAIN OUTLETS.

### FABRIC AND SUPPORTING FRAME FOR INLET PROTECTION