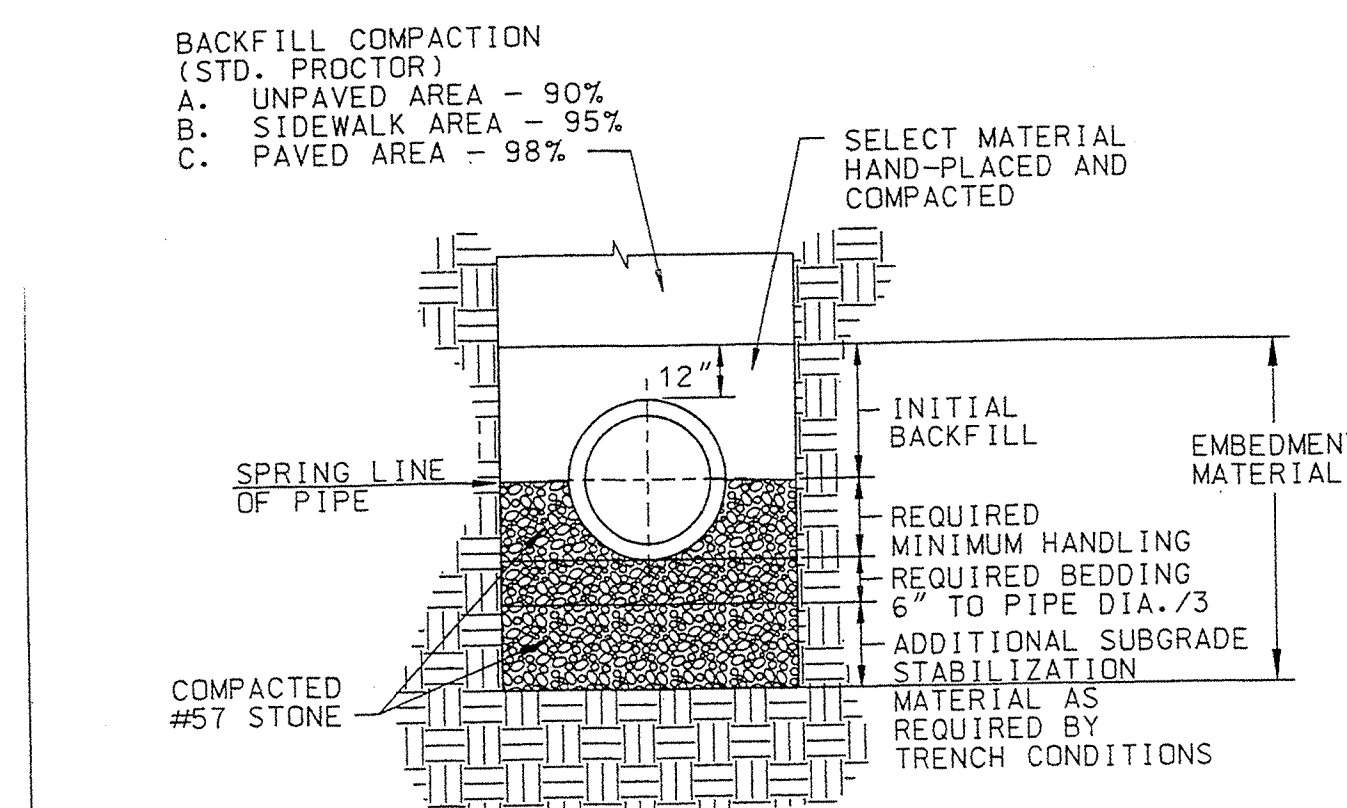


MAY 1, 2001

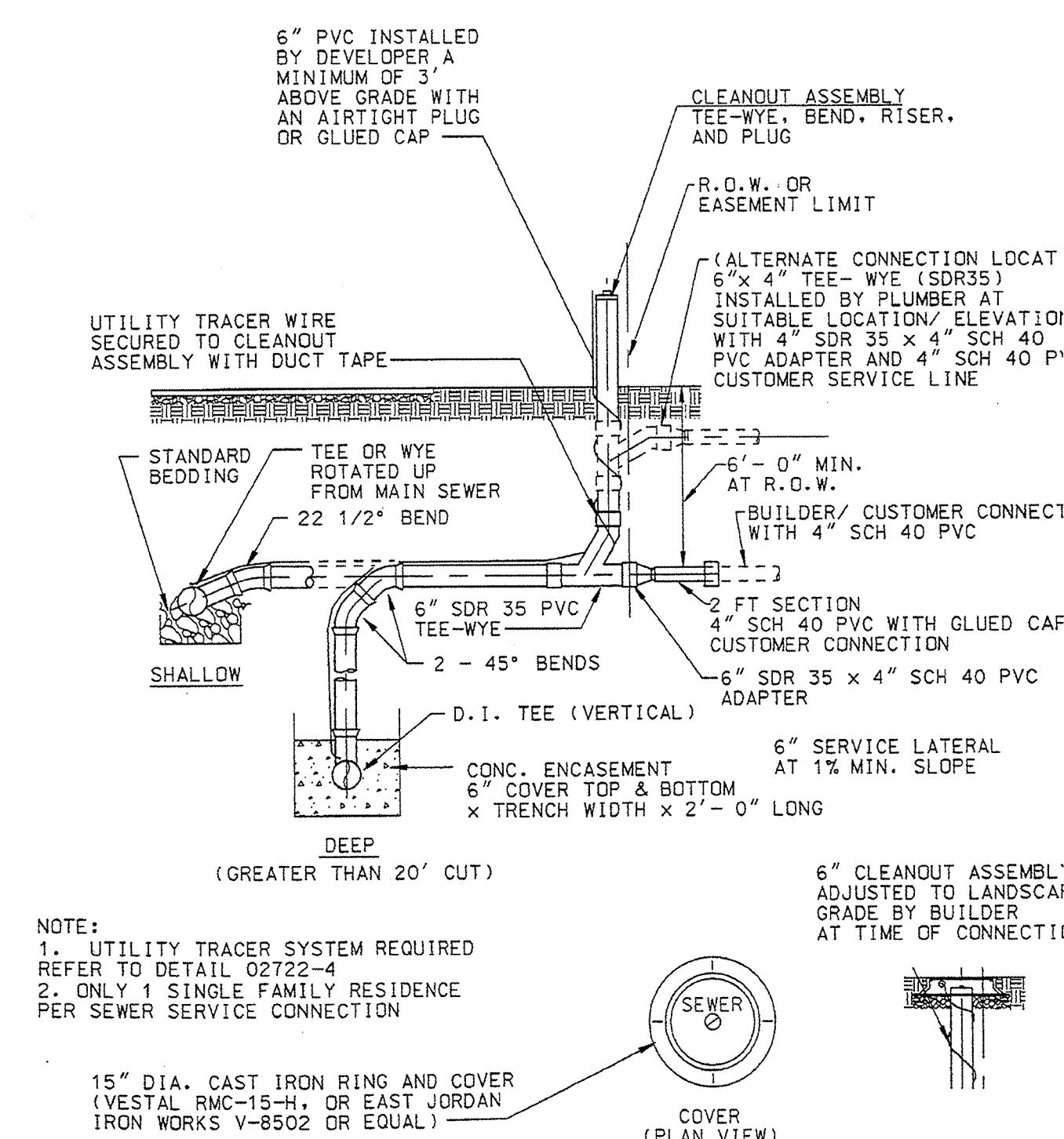
AGENCY DIRECTOR



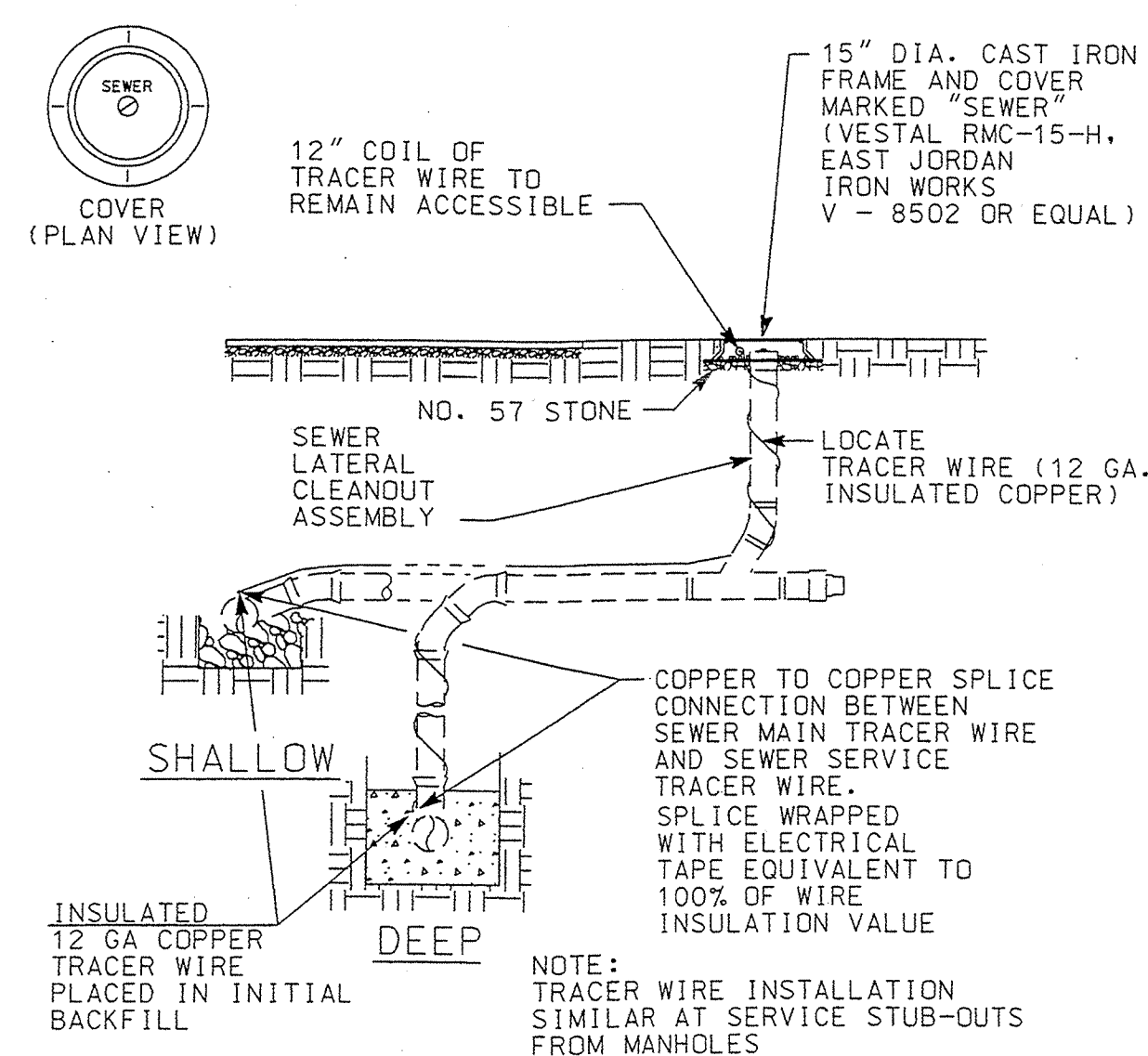
SEWER TRENCH BEDDING DETAIL
STANDARD COBB COUNTY DETAIL # 02722-1

APRIL 10, 2002

AGENCY DIRECTOR



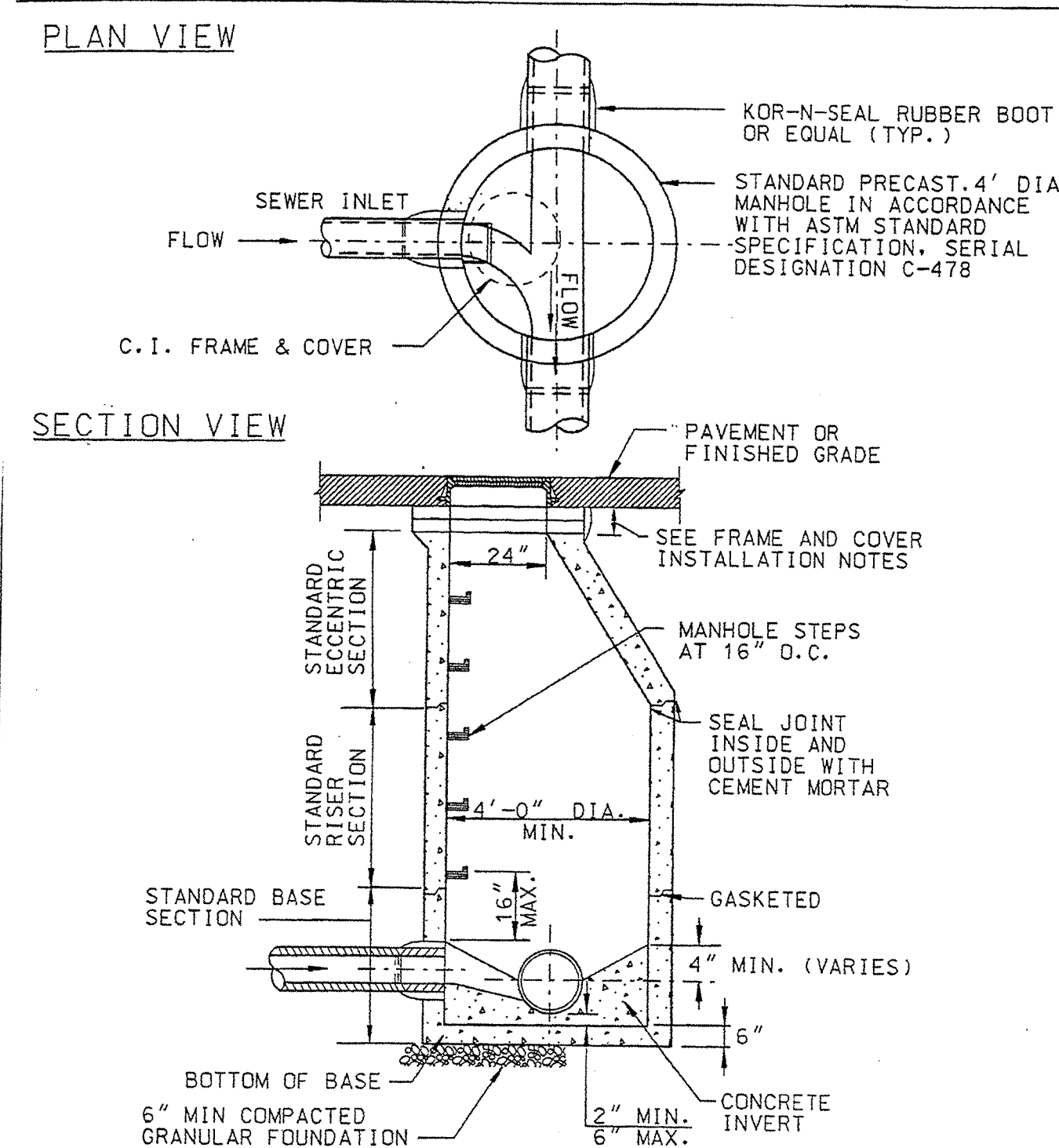
SEWER SERVICE CONNECTION
STANDARD COBB COUNTY DETAIL # 02722-2

MAY 1, 2001 _____
AGENCY DIRECTOR

SEWER SERVICE UTILITY TRACER
STANDARD COBB COUNTY DETAIL # 02722-4B

MAY 1, 2001

AGENCY DIRECTOR

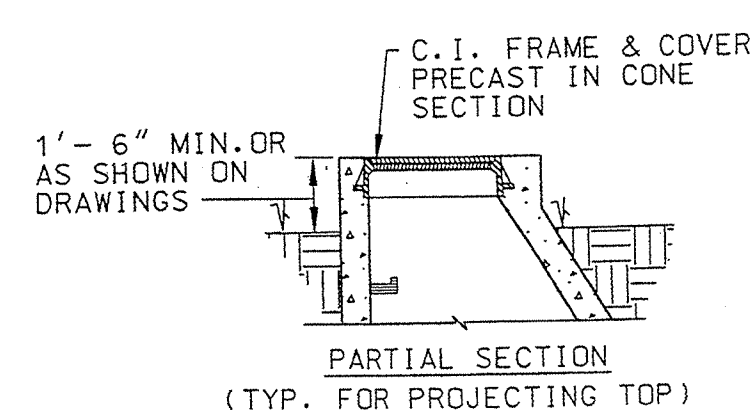


STANDARD MANHOLE (<20 DEPTH)
STANDARD COBB COUNTY DETAIL # 03410-1

MAY 1, 2001

AGENCY DIRECTOR

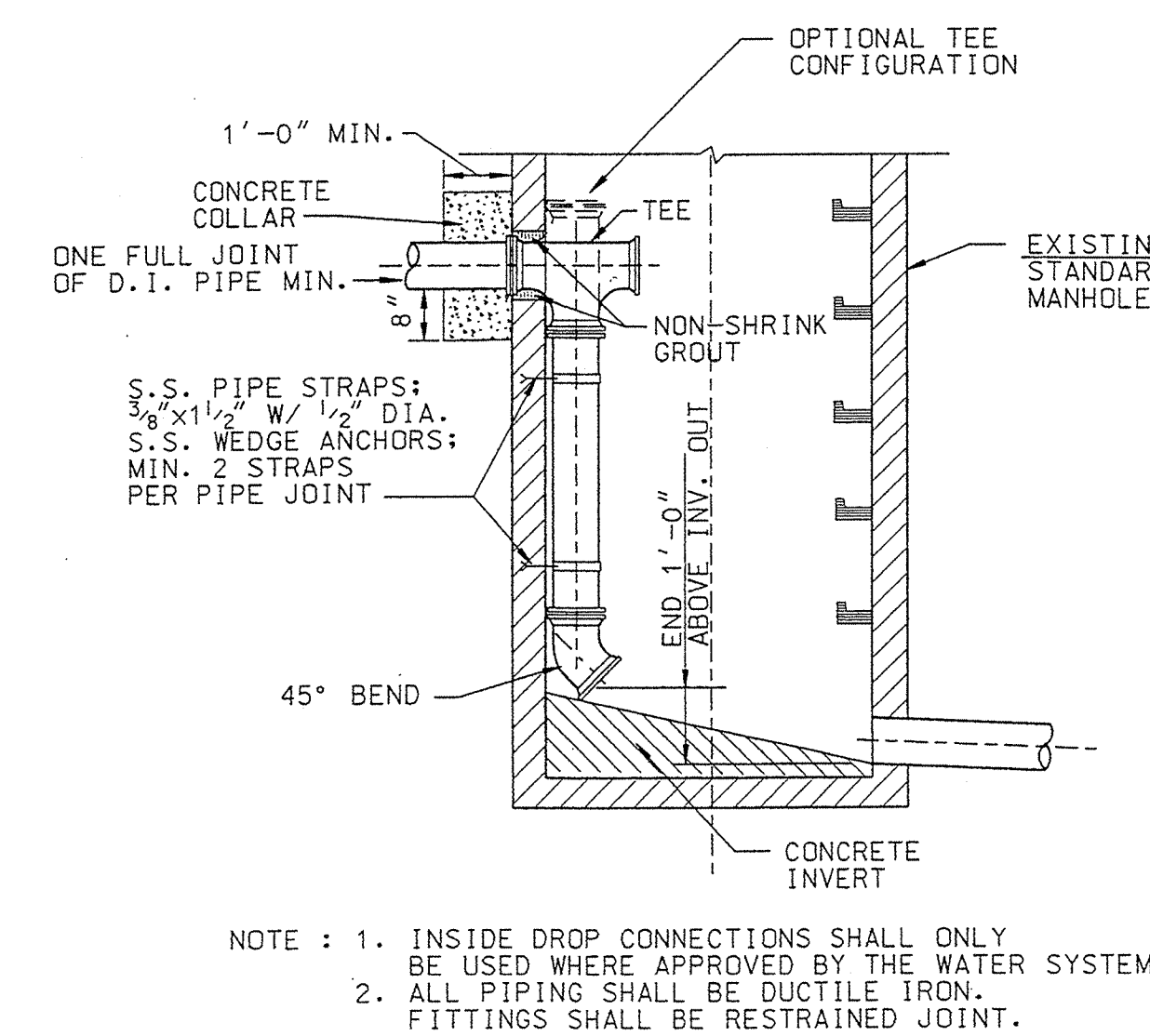
- FRAME AND COVER INSTALLATION NOTES :
1. COVER TO BE SET FLUSH WITH PAVEMENT AND SHALL MATCH SLOPE OF STREET.
 2. ADJUSTMENT OF FRAME AND COVER TO GRADE SHALL BE ACCOMPLISHED WITH A PRECAST CONCRETE LEVELING RING OR HDPE (LADTECH, INC. OR EQUAL) ADJUSTING RINGS. IN NO CASE SHALL VERTICAL ADJUSTMENT EXCEED 14-INCHES.
 3. FRAME SHALL BE IN CEMENT MORTAR BED (1-1/2" THICKNESS).
 4. FRAME SHALL BE PRECAST IN CONE SECTION OF ALL MANHOLES NOT LOCATED IN PAVED AREAS.



STANDARD MANHOLE FRAME AND COVER INSTALLATION
STANDARD COBB COUNTY DETAIL # 03410-2

AUGUST 1, 2001

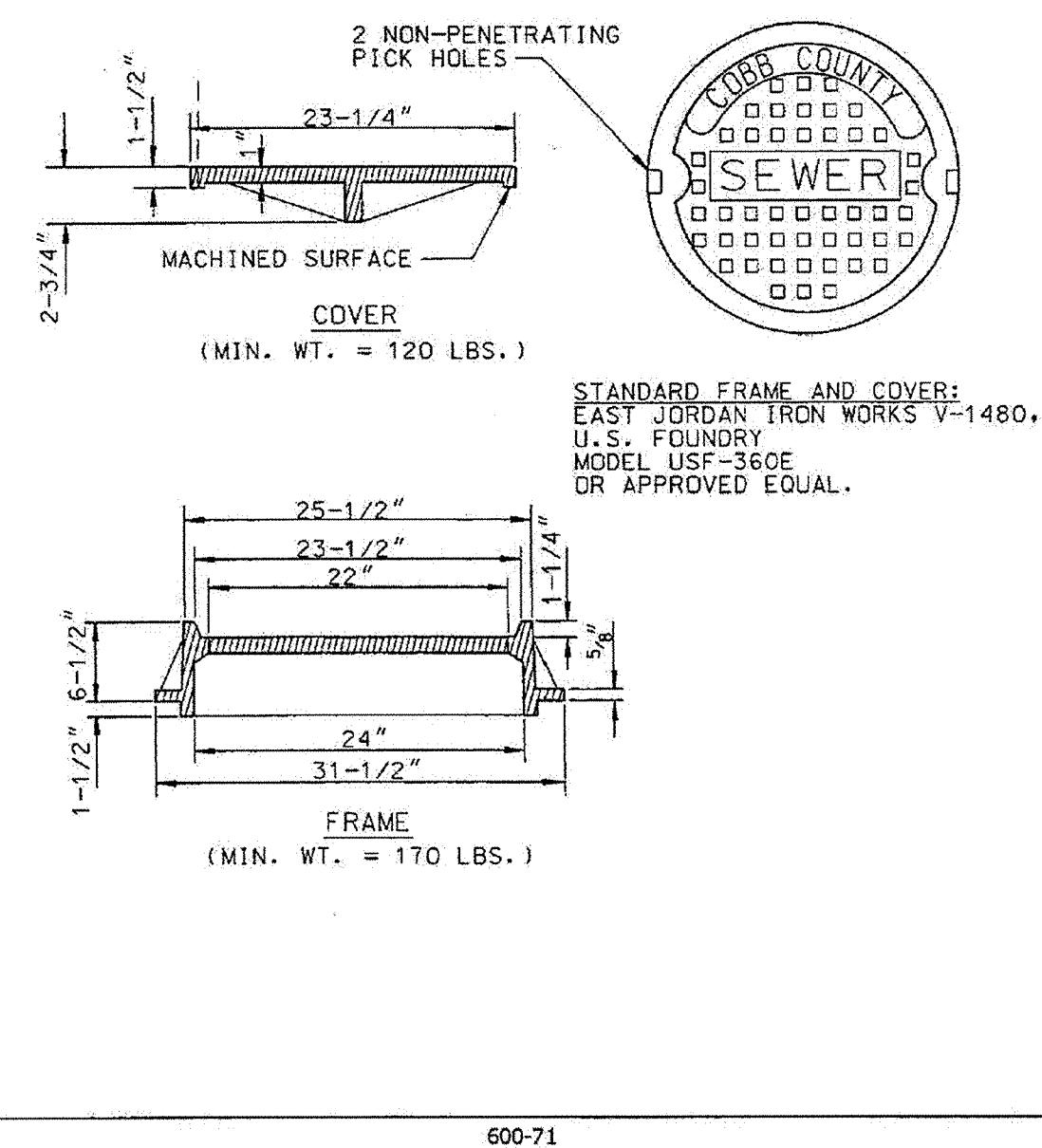
AGENCY DIRECTOR



 INSIDE DROP MANHOLE CONNECTION
STANDARD COBB COUNTY DETAIL # 03410-8

MAY 1, 2001

AGENCY DIRECTOR



STANDARD MANHOLE FRAME AND COVER
STANDARD COBB COUNTY DETAIL # 03410-11

[illegible]

FOR SANITARY SEWER CONSTRUCTION NOTES
SEE SHEET C0-01.

COBB COUNTY
GEORGIA
APPROVED
FOR
CONSTRUCTION

PROJECT NO.
018459002

SHEET NUMBER
C6-00