

**THE PRESTON
PARTNERSHIP, LLC**
A MULTI-DISCIPLINARY DESIGN FIRM

SOUTH TERRACES
115 PERIMETER CENTER PLACE, SUITE 950
ATLANTA, GEORGIA 30346
TELEPHONE: 770.396.7248
FAX: 770.396.2945
WWW.THEPRESTONPARTNERSHIP.COM

CONSULTANT

DEI
DESIGN
ENVIRONMENTS
INC.

SEAL _____

PROJECT _____

**CIRCLE 75
PHASE II**

CIRCLE 75
COBB COUNTY, GA 30339

FOR _____

**ATLANTIC REALTY
PARTNERS**

3438 PEACHTREE ROAD
SUITE 1425
ATLANTA, GA 30326

△ ISSUE _____ DATE _____
XXXXXXX 00.00.00
XXXXXXX 00.00.00

DATE _____ 07.20.16

JOB NUMBER _____ 15303

DRAWN BY _____ KD, MS

CHECKED BY _____ MG

DEI JOB # _____

15303

SHEET TITLE _____

LEVEL 6 ELECTRICAL

ADDITIONS PLAN

SHEET NUMBER _____

ID.302

COMMENTS _____

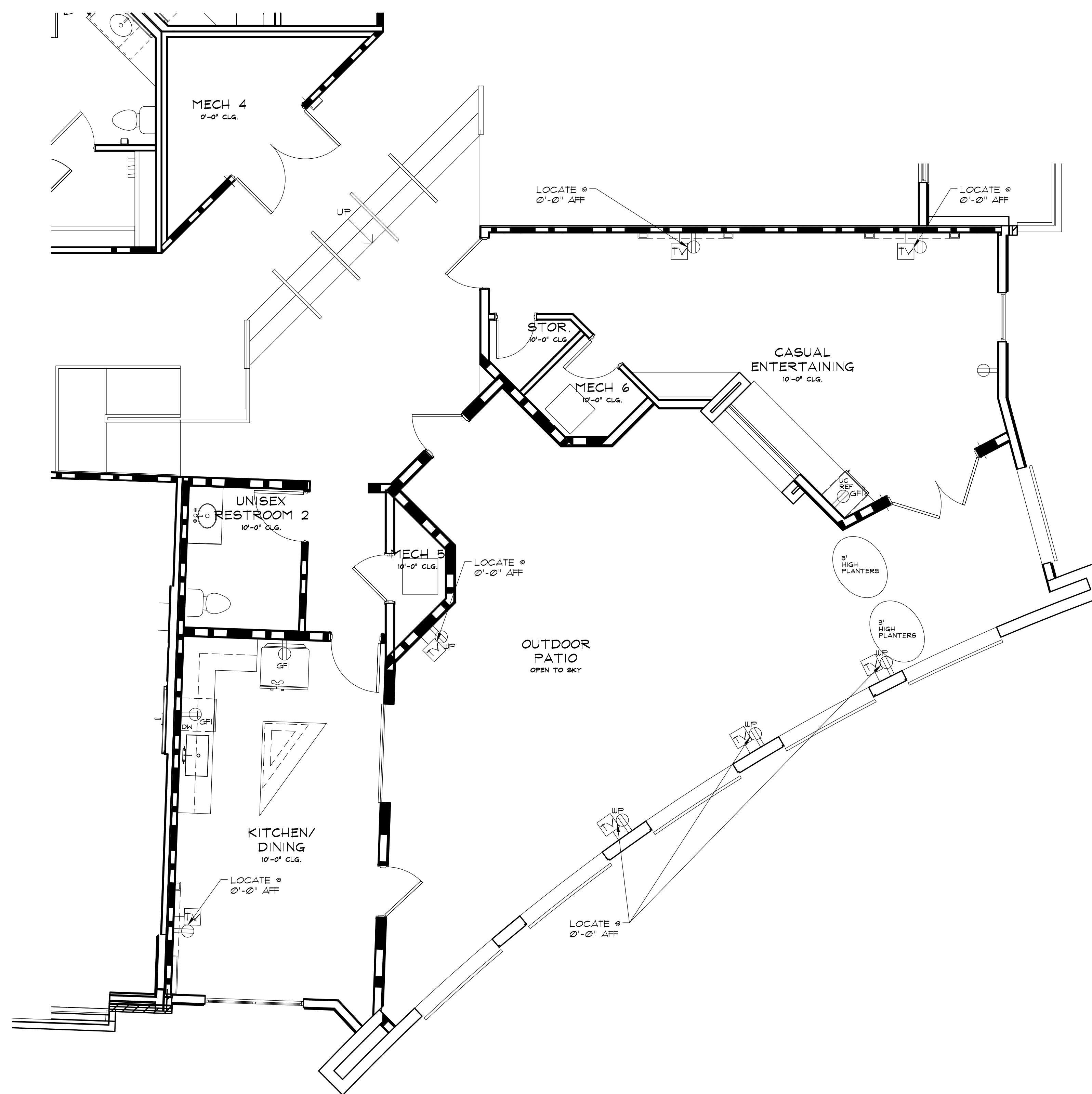
© 2015 The Preston Partnership, LLC

ELECTRICAL NOTES:

ELECTRICAL OUTLET, JUNCTION BOX,
AND LIGHTING MUST BE REFERRED TO
AND CONFIRMED WITH ELECTRICAL
ENGINEER'S DRAWINGS AS WELL AS
STATE REQUIREMENTS. LOCATIONS AS
SHOWN ARE DESIRABLE IN ACCORDANCE
WITH DESIGN. REFER TO ELECTRICAL
ENGINEER'S DRAWING FOR ELECTRICAL
INFORMATION.

ELECTRICAL LEGEND:

- ⊕ DUPLEX OUTLET
- GFI ⊕ GROUND FAULT INTERRUPT OUTLET
- WF ⊕ WEATHERPROOF OUTLET
- CABLE OUTLET



LEVEL 6 ELECTRICAL ADDITIONS PLAN
SCALE : 1/4" = 1'-0"