

THE PRESTON
PARTNERSHIP, LLC
A MULTI-DISCIPLINARY DESIGN FIRM

SOUTH TERRACES
115 PERIMETER CENTER PLACE, SUITE 950
ATLANTA, GEORGIA 30346
TELEPHONE: 770.396.7248
FAX: 770.396.2945
WWW.THEPRESTONPARTNERSHIP.COM

CONSULTANT

DEI
DESIGN
ENVIRONMENTS
INC.

SEAL _____

PROJECT _____

CIRCLE 75
PHASE II

CIRCLE 75
COBB COUNTY, GA 30339

FOR _____

ATLANTIC REALTY
PARTNERS

3438 PEACHTREE ROAD
SUITE 1425
ATLANTA, GA 30326

△	ISSUE	DATE
	XXXXXXX	00.00.00
	XXXXXXX	00.00.00

DATE 07.20.16

JOB NUMBER 15303

DRAWN BY KD, MS

CHECKED BY MG

DEI JOB #

15303

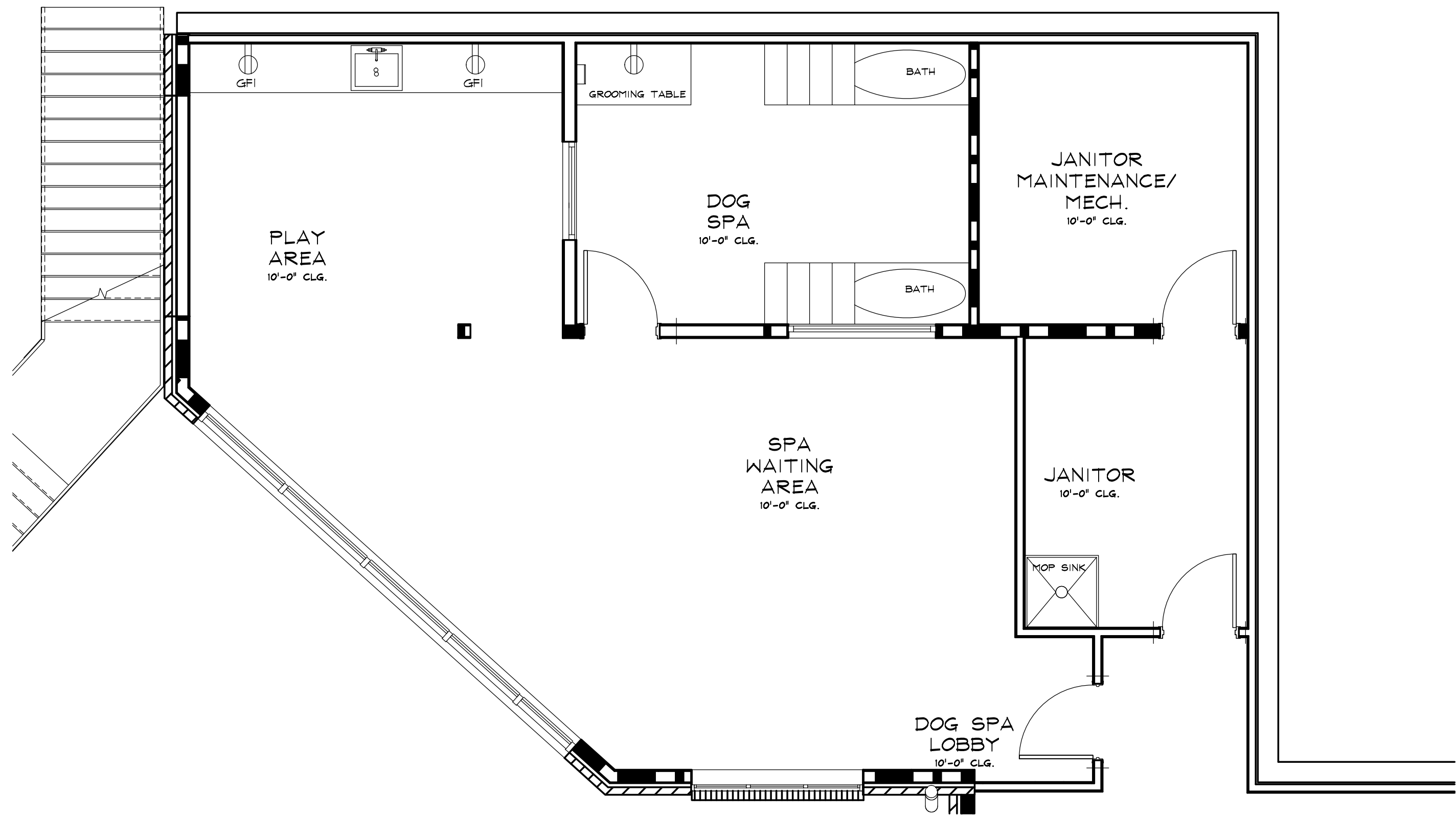
SHEET TITLE DOG SPA ELECTRICAL

ADDITIONS PLAN

SHEET NUMBER

ID.303

COMMENTS _____



ELECTRICAL NOTES:

ELECTRICAL OUTLET, JUNCTION BOX,
AND LIGHTING MUST BE REFERRED TO
AND CONFIRMED WITH ELECTRICAL
ENGINEER'S DRAWINGS AS WELL AS
STATE REQUIREMENTS. LOCATIONS AS
SHOWN ARE DESIRABLE IN ACCORDANCE
WITH DESIGN. REFER TO ELECTRICAL
ENGINEER'S DRAWING FOR ELECTRICAL
INFORMATION

ELECTRICAL LEGEND:

⊖ DUPLEX OUTLET
GFI ⊖ GROUND FAULT INTERRUPT OUTLET

1 DOG SPA ELECTRICAL ADDITIONS PLAN
ID.303 SCALE : 1/4" = 1'-0"