

**THE PRESTON  
PARTNERSHIP, LLC**  
A MULTI-DISCIPLINARY DESIGN FIRM

SOUTH TERRACES  
115 PERIMETER CENTER PLACE, SUITE 950  
ATLANTA, GEORGIA 30346  
TELEPHONE: 770.396.7248  
FAX: 770.396.2945  
WWW.THEPRESTONPARTNERSHIP.COM

CONSULTANT

**DEi**  
DESIGN  
ENVIRONMENTS  
INC.

SEAL \_\_\_\_\_

PROJECT \_\_\_\_\_

**CIRCLE 75  
PHASE II**

CIRCLE 75  
COBB COUNTY, GA 30339

FOR \_\_\_\_\_

**ATLANTIC REALTY  
PARTNERS**

3438 PEACHTREE ROAD  
SUITE 1425  
ATLANTA, GA 30326

△ ISSUE \_\_\_\_\_ DATE \_\_\_\_\_  
XXXXXXXXX 00.00.00  
XXXXXXXXX 00.00.00

DATE 07.20.16

JOB NUMBER 15303

DRAWN BY KD, MS

CHECKED BY MG

DEI JOB #

15303

SHEET TITLE

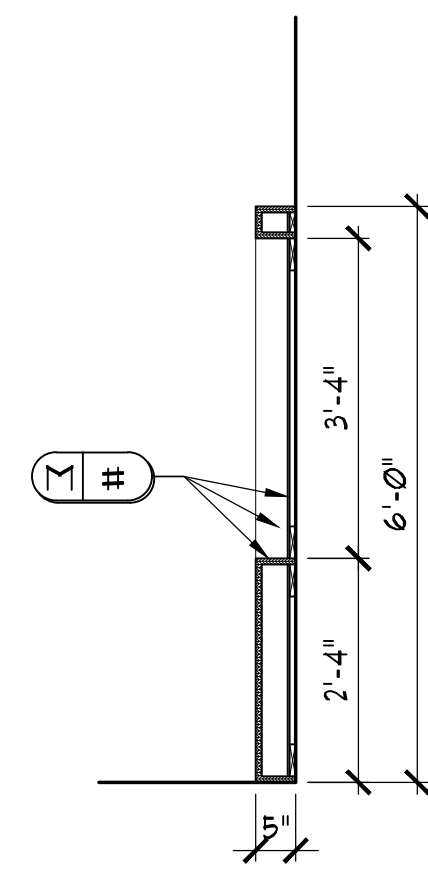
INTERIOR ELEVATIONS &  
DETAILS

SHEET NUMBER

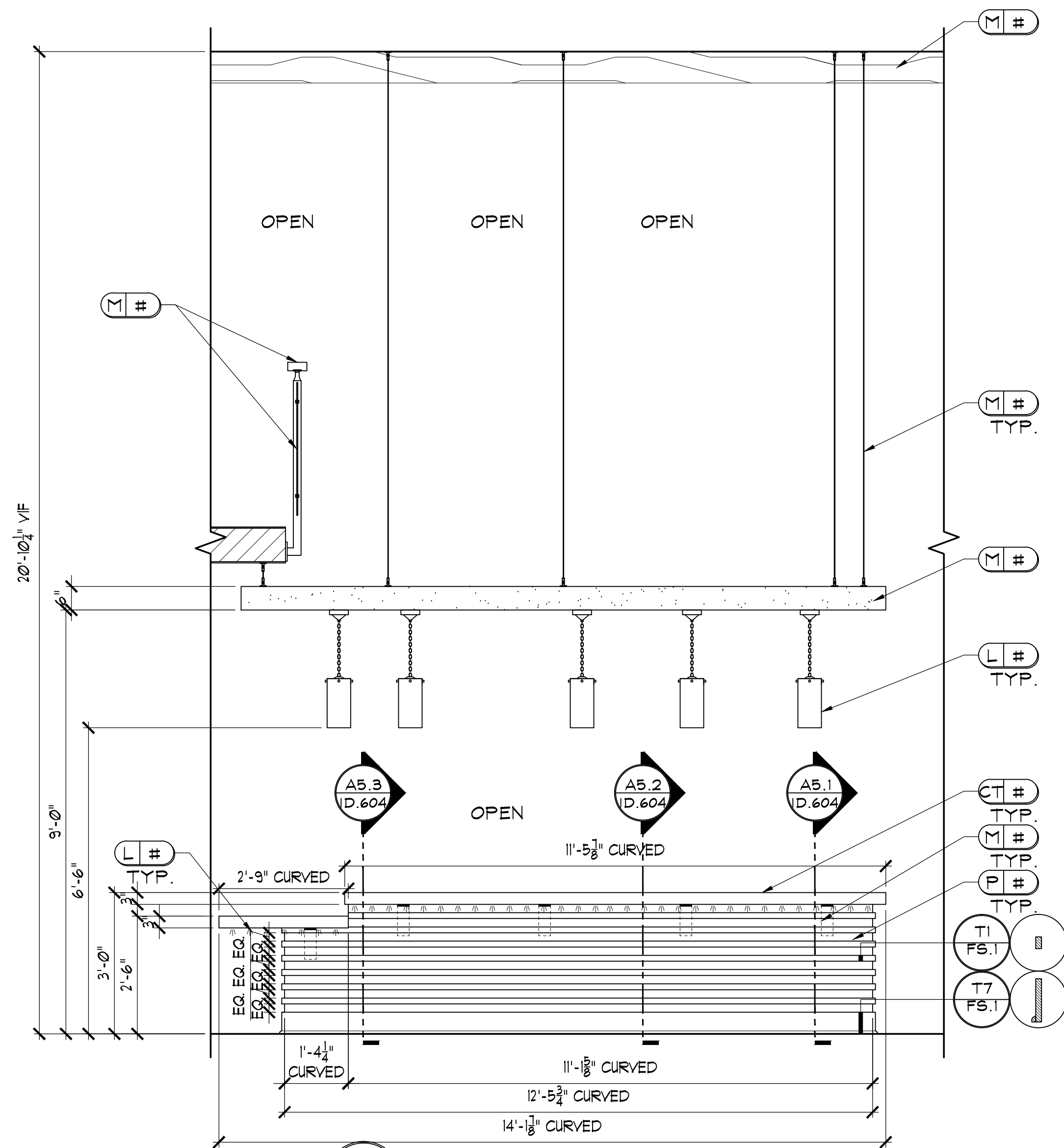
**ID.603**

COMMENTS \_\_\_\_\_

© 2015 The Preston Partnership, LLC

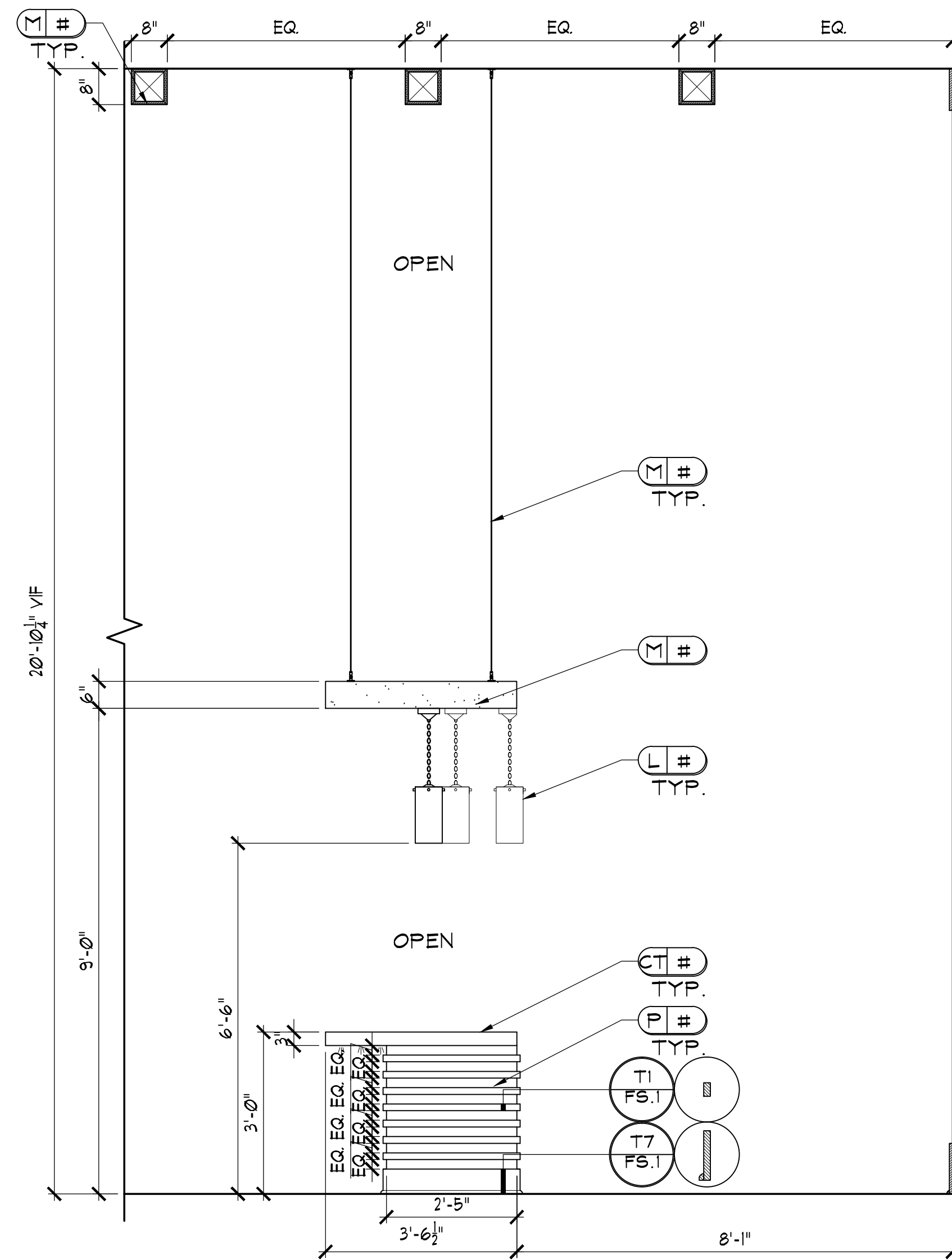


**A2.2 SECTION**  
ID.603 SCALE: 1/2" = 1'-0"



**A3 LEASING**  
ID.603 SCALE: 1/2" = 1'-0"

NOTE: 1) ALL TRIM TO BE PAINTED P#.  
2) WALL TO BE SMOOTH FINISH.  
3) REFER TO ID.200 FOR LIGHTING  
LOCATIONS.  
4) USE M# AND M# FOR SUPPORT AS  
NEEDED.



**A4 LEASING**  
ID.603 SCALE: 1/2" = 1'-0"

NOTE: 1) ALL TRIM TO BE PAINTED P#.  
2) WALL TO BE SMOOTH FINISH.  
3) REFER TO ID.200 FOR LIGHTING  
LOCATIONS.  
4) USE M# FOR SUPPORT AS NEEDED.