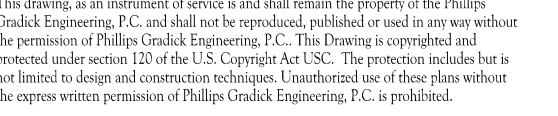
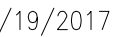




SOUTH TERRACES
5 PERIMETER CENTER PLACE, SUITE 950
ATLANTA, GEORGIA 30346
TELEPHONE: 770 396 7248
FAX: 770 396 2945

WWW.THEPRESTONPARTNERSHIP.COM
CONSULTANT





PROJECT _____

REVEL AT THE BALLPARK PHASE II

885 CRESCENT PKWY
SMYRNA, GA 30080

OR _____



ATLANTIC REALTY
PARTNERS

438 PEACHTREE ROAD
SUITE 1425
ATLANTA, GA 30326

SUES & - REVISIONS _____ DATE _____

CONCEPTUAL DESIGN	8/21/15
SD PROGRESS SET	09/28/15
SMP PRICING SET	10/14/15
FOUNDATION PACKAGE	12/07/15
SMP PACKAGE	04/03/17
PERMIT SET	05/22/17
FM COMMENTS	07/19/17



DATE 05/22/2017

1493101

DRAWN BY _____ LD
CHECKED BY _____ CMG

SHEET TITLE _____

BUILDING 1000B PROJECT

LEVEL 1

SHEET NUMBER _____

M1-11B

© 2017 The Preston Partnership, LL

