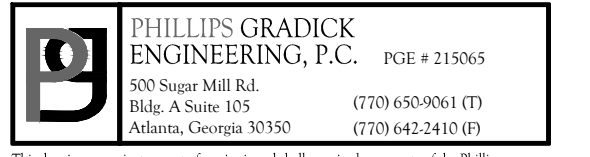


THE PRESTON PARTNERSHIP, LLC
A MULTI-DISCIPLINARY DESIGN FIRM

SOUTH TERRACES
115 PERIMETER CENTER PLACE, SUITE 950
ATLANTA, GEORGIA 30346
TELEPHONE: 770 396 7248
FAX: 770 396 2945

WWW.THEPRESTONPARTNERSHIP.COM
CONSULTANT



PHILLIP GRADICK
ENGINEERING, P.C.
500 North Mill Rd.
Atlanta, GA 30328
(770) 640-9061 (F)
(770) 640-2410 (O)

SEAL



PROJECT

**REVEL AT THE BALLPARK
PHASE II**
2885 CRESCENT PKWY
SMYRNA, GA 30080

FOR



ATLANTIC REALTY PARTNERS

3438 PEACHTREE ROAD
SUITE 1425
ATLANTA, GA 30326

ISSUES & REVISIONS

NO.	DESCRIPTION	DATE
CONCEPTUAL DESIGN	8/21/15	
50% PROGRESS SET	09/28/15	
GMP PRICING SET	10/14/15	
FOUNDATION PACKAGE	12/07/15	
GMP PACKAGE	04/03/17	
PERMIT SET	05/22/17	

DATE 05/22/2017

JOB NUMBER 1493101

DRAWN BY LD

CHECKED BY CMG

SHEET TITLE

BUILDING 1000A PROJECT -

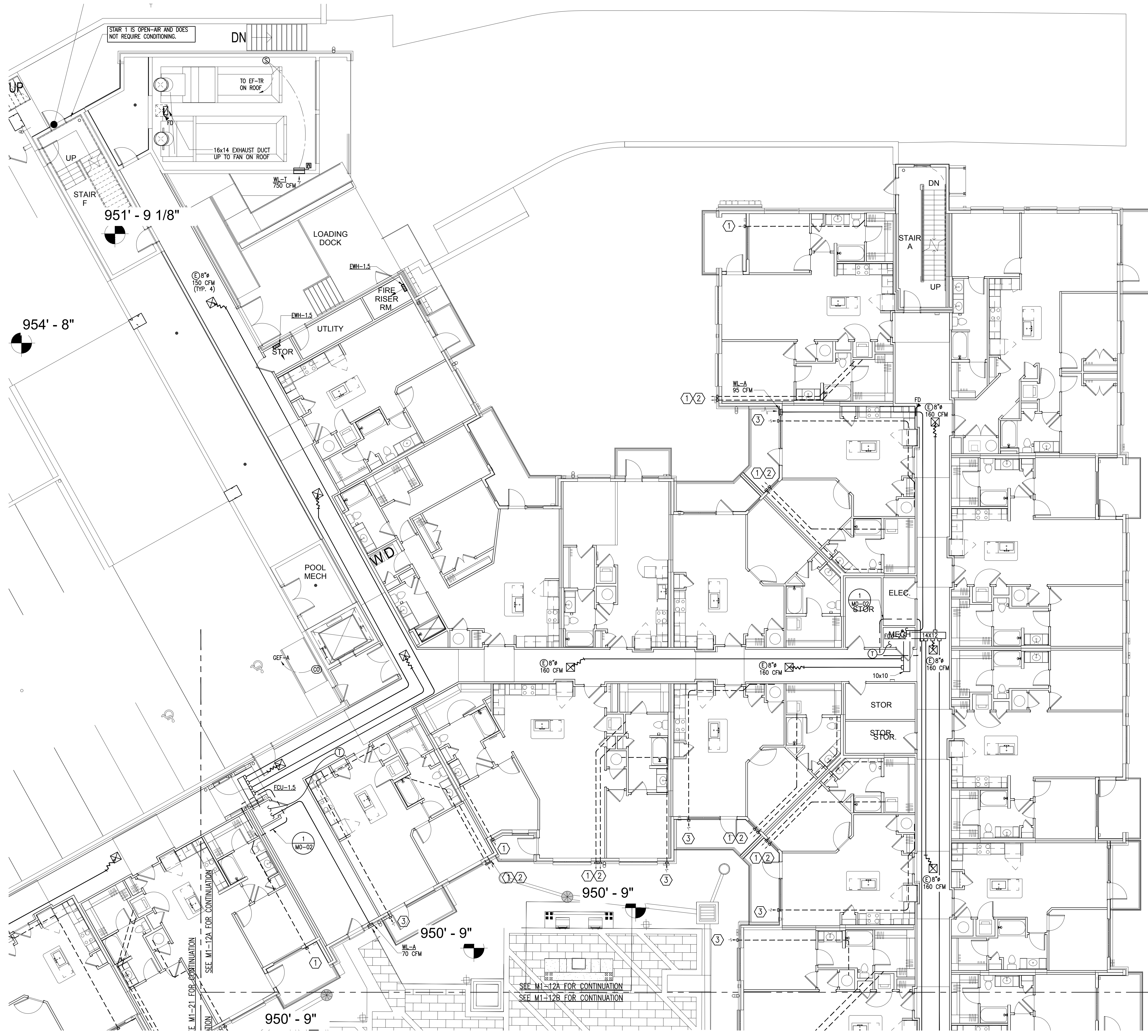
LEVEL 2

SHEET NUMBER

M1-12A

COMMENTS

30342 © 2017 The Preston Partnership, LLC

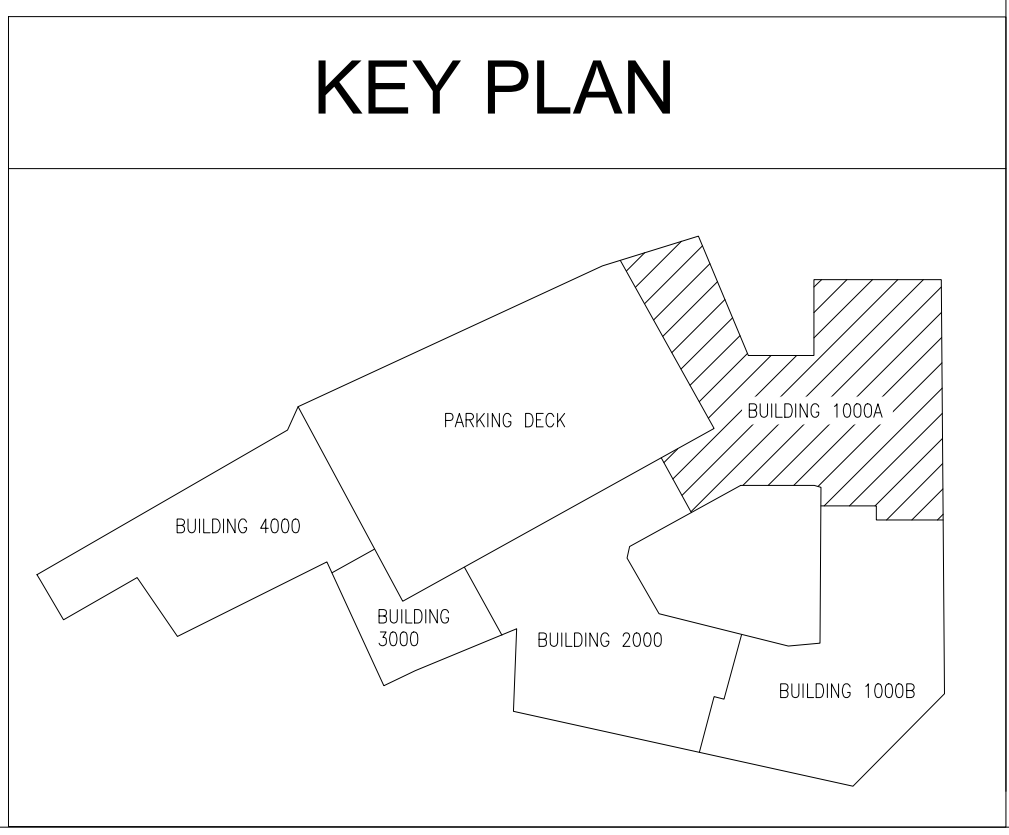


NOTES:

- SEE SHEET M3.XX FOR APARTMENT HVAC.
- UNLESS NOTED OTHERWISE, ALL CEILINGS ARE PART OF A RATED FLOOR/CEILING ASSEMBLY, AND REQUIRE A CEILING RADIATION DAMPER (CRD) AT EACH PENETRATION OF CEILING.
- FOR MECHANICAL SYSTEMS SERVING THE CORRIDORS, THE O.A. INTAKE LOUVER SHALL BE INSTALLED A MINIMUM OF 10'-0" FROM APARTMENT UNITS TOILET EXHAUST. ADJUST TERMINATION POINT OF EXHAUST DUCTS AS NECESSARY FOR EACH APARTMENT UNIT.
- ALTERNATE ROUTING OF DRYER AND TOILET EXHAUST DUCT IN APARTMENT UNITS SHOWN HERE, TO AVOID CONFLICT WITH 10'-0" CLEARANCE REQUIREMENT FROM CORRIDOR OUTDOOR AIR INTAKE.
- APARTMENT UNIT WINDOWS OPEN SO THAT THE TOP OF OPENING IS AT 5'-0" A.F.F. EXHAUST TERMINATIONS ARE LOCATED ABOVE THE CEILING OF APARTMENTS WHICH IS LOCATED AT 9'-0" A.F.F. THIS CREATES A MINIMUM 4'-0" CLEAR FROM BUILDING OPENING TO A VENT CAP.

KEY NOTES:

- TOILET EXHAUST OUTLET.
- DRYER EXHAUST VENT OUTLET.
- O.A. INTAKE INLET, MAINTAIN 10'-0" FROM ANY EXHAUST OUTLET AS SHOWN ON THESE PLANS.



PROJECT LEVEL 2 BUILDING 1000A
SCALE: 1/8" = 1'-0"