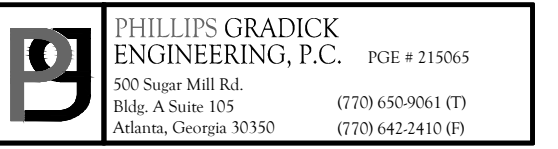




SOUTH TERRACES
5 PERIMETER CENTER PLACE, SUITE 950
ATLANTA, GEORGIA 30346
TELEPHONE: 770 396 7248
FAX: 770 396 2945

WWW.THEPRESTONPARTNERSHIP.COM
CONSULTANT



No drawing, as an instrument of service to and shall remain the property of the Phillips Diesel Engineering, P.C. and shall not be reproduced, published or used in any way without the permission of Phillips Diesel Engineering, P.C. This Drawing is copyrighted and protected under section 110 of the U.S. Copyright Act USC. The protection includes but is not limited to design and construction techniques. Unauthorized use of these plans without the express written permission of Phillips Diesel Engineering, P.C. is prohibited.



PROJECT _____

REVEL AT THE BALLPARK PHASE II

885 CRESCENT PKWY
SMYRNA, GA 30080

OR _____



ATLANTIC REALTY
PARTNERS

438 PEACHTREE ROAD
SUITE 1425
ATLANTA, GA 30326

SUES & \triangle - REVISIONS _____ DATE _____

CONCEPTUAL DESIGN	8/21/15
50% PROGRESS SET	09/28/15
COMP PRICING SET	10/14/15
FOUNDATION PACKAGE	12/07/15
COMP PACKAGE	04/03/17
PERMIT SET	05/22/17

DATE 05/22/2017

1493101

LD

SHEET TITLE _____ CMG

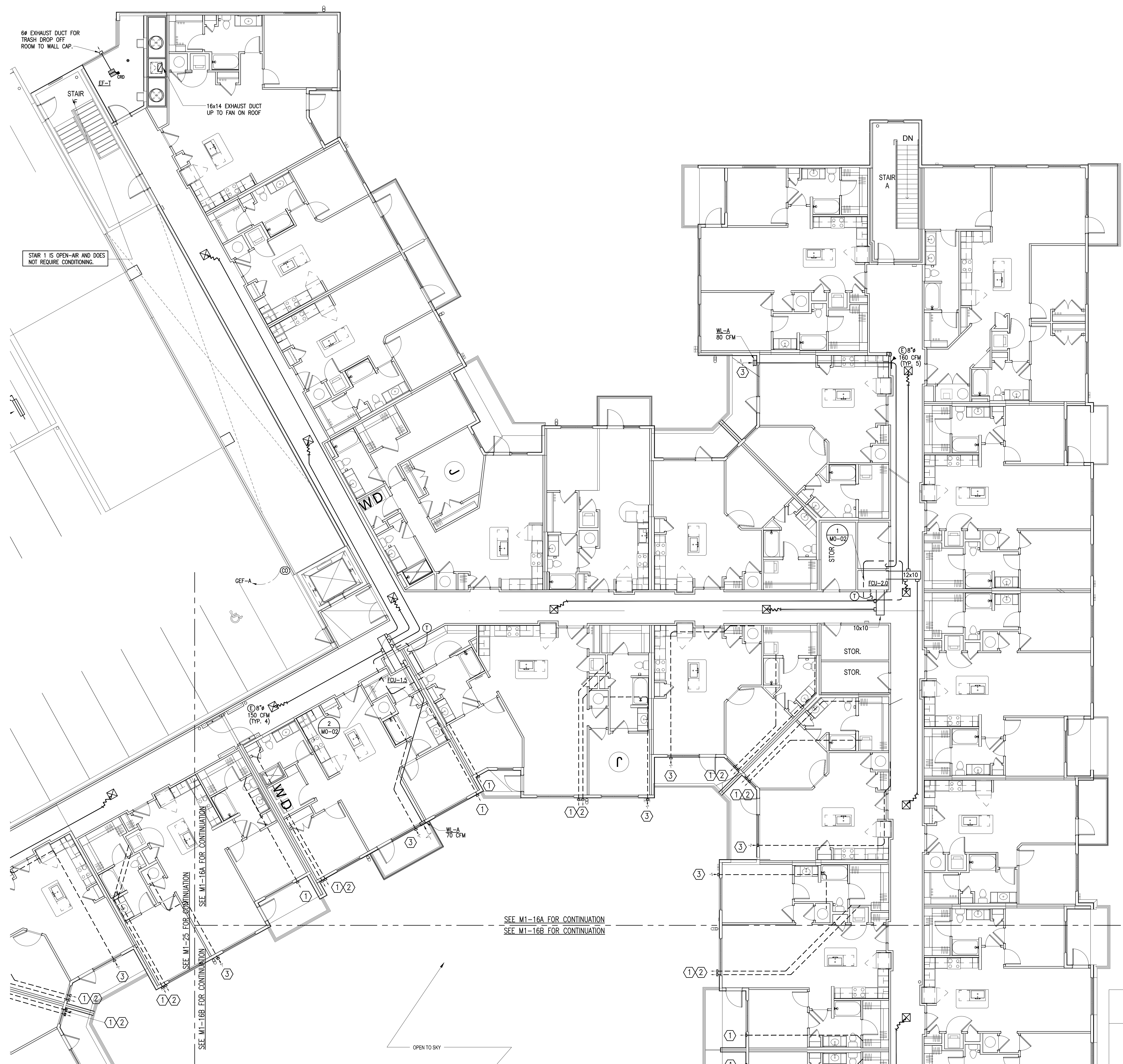
BUILDING 1000A PROJECT -

SHEET NUMBER _____

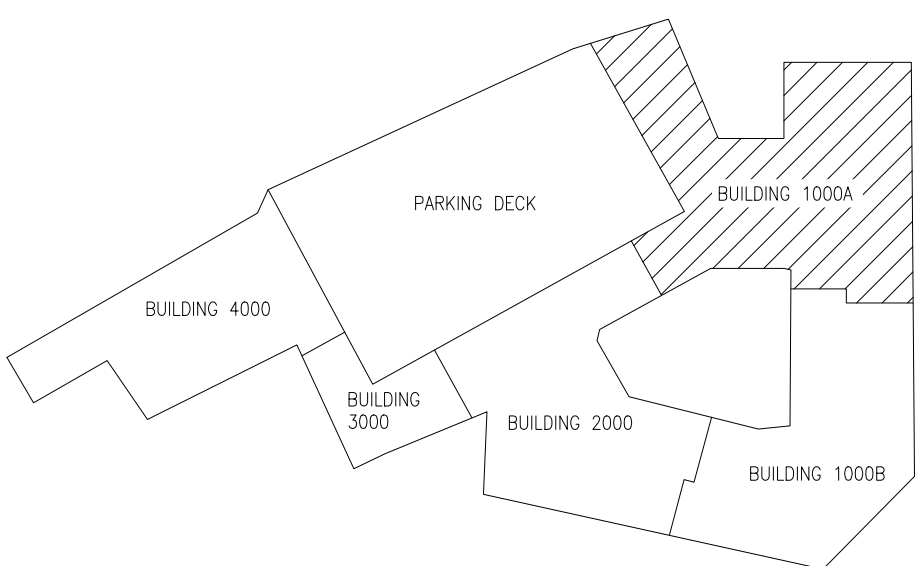
M1-16A

COMMENTS _____

© 2017 The Preston Partnership, LL



KEY PLAN



1 BUILDING 1000A PROJECT LEVEL 6
SCALE: 1/8" = 1'-0"

NOTES:

1. SEE SHEET M3.XX FOR APARTMENT HVAC.
2. UNLESS NOTED OTHERWISE, ALL CEILINGS ARE PART OF A RATED FLOOR/CEILING ASSEMBLY, AND REQUIRE A CEILING RADIATION DAMPER (CRD) AT EACH PENETRATION OF CEILING.
3. FOR MECHANICAL SYSTEMS SERVING THE CORRIDORS, THE O.A. INTAKE LOUVER SHALL BE INSTALLED A MINIMUM OF 10'-0" FROM APARTMENT UNITS TOILET EXHAUST. ADJUST TERMINATION POINT OF EXHAUST DUCTS AS NECESSARY FOR EACH APARTMENT UNIT.

KEY NOTES:

- 1 TOILET EXHAUST OUTLET.
- 2 DRYER EXHAUST VENT OUTLET.
- 3 O.A. INTAKE INLET. MAINTAIN 10'-0" FROM ANY EXHAUST OUTLET AS SHOWN ON THESE PLANS.