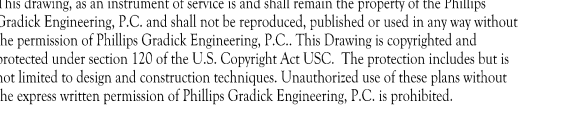


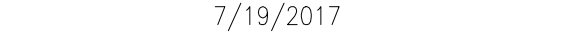


SOUTH TERRACES
5 PERIMETER CENTER PLACE, SUITE 950
ATLANTA, GEORGIA 30346
TELEPHONE: 770 396 7248
FAX: 770 396 2945

WWW.THEPRESTONPARTNERSHIP.COM
CONSULTANT



_____EAL



PROJECT _____

REVEL AT THE BALLPARK PHASE II

885 CRESCENT PKWY
SMYRNA, GA 30080

OR _____



438 PEACHTREE ROAD
SUITE 1425
ATLANTA, GA 30326

SUES & \triangle - REVISIONS _____ DATE _____

CONCEPTUAL DESIGN	8/21/15
SD PROGRESS SET	09/28/15
GMP PRICING SET	10/14/15
FOUNDATION PACKAGE	12/07/15
GMP PACKAGE	04/03/17
PERMIT SET	05/22/17
FM COMMENTS	07/19/17

[illegible]

DATE 05/22/2017

08 NUMBER 1493101

DRAWN BY _____ LD
CHECKED BY _____

SHEET TITLE _____

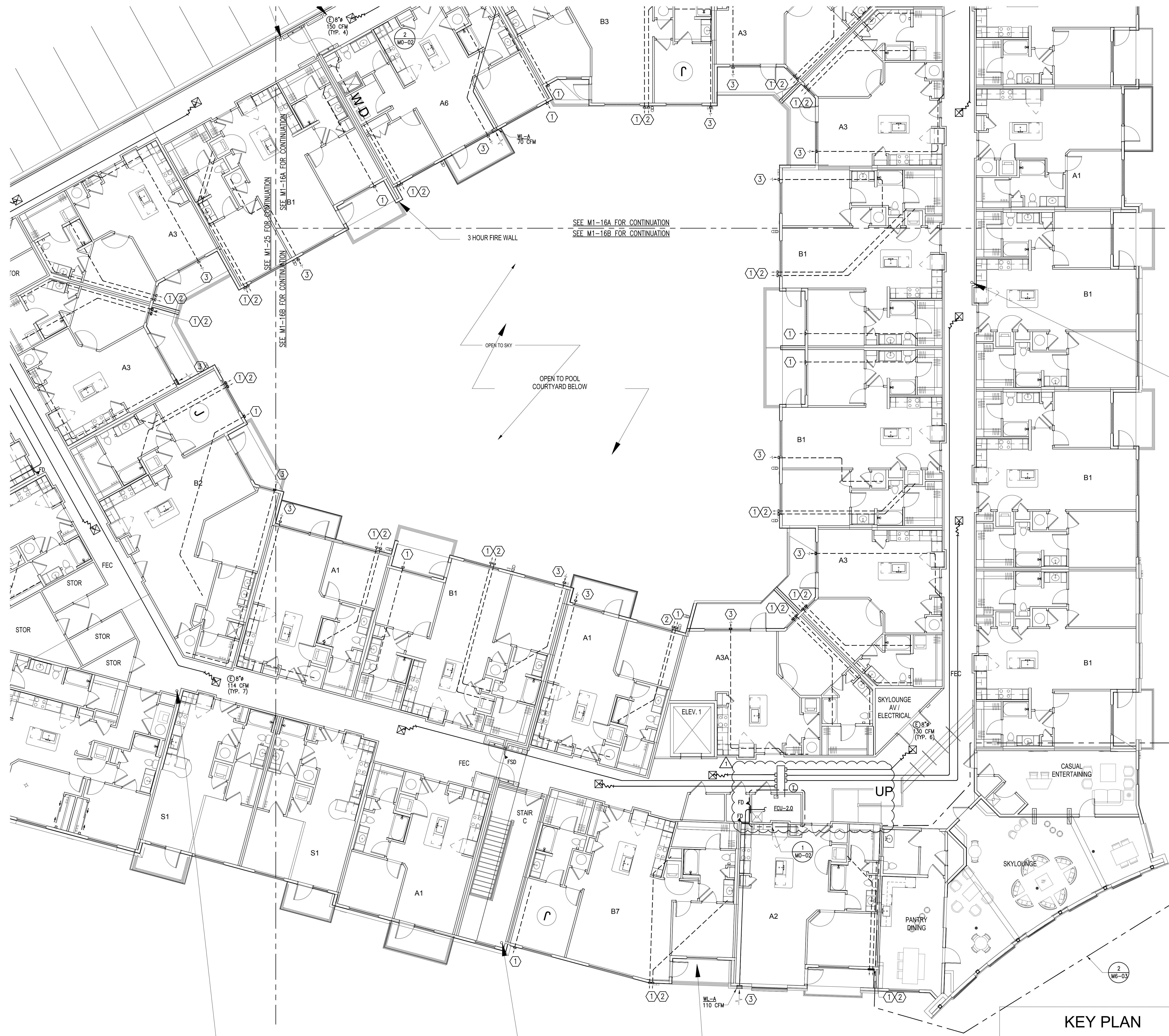
BUILDING 1000 PROJECT -
LEVEL 6

SHEET NUMBER _____

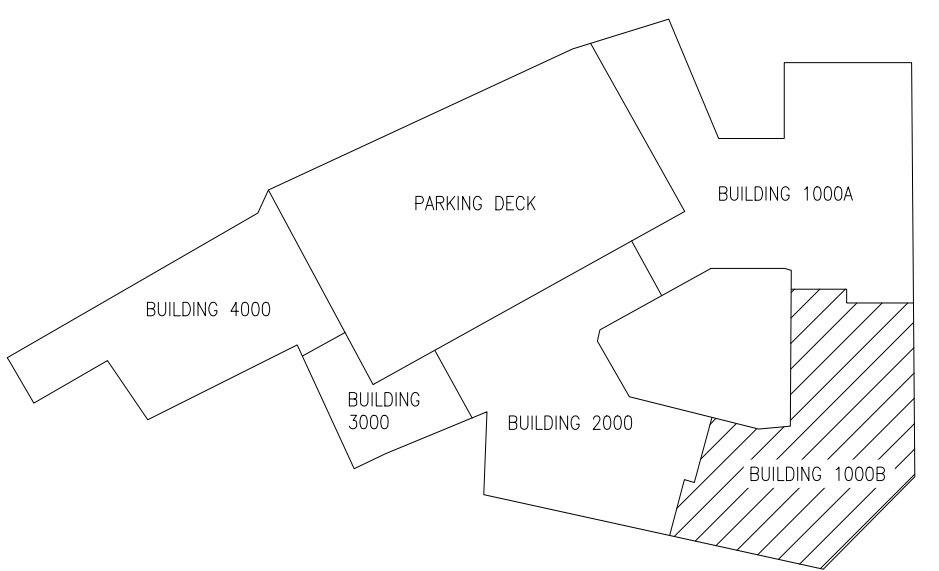
M1-16B

COMMENTS _____

© 2017 The Preston Partnership, LLC



KEY PLAN



- NOTES:
1. SEE SHEET MXXX FOR APARTMENT HVAC.
2. UNLESS NOTED OTHERWISE, ALL CEILINGS ARE PART OF A RATED FLOOR/CEILING ASSEMBLY, AND REQUIRE A CEILING RADIATION DAMPER (CRD) AT EACH PENETRATION OF CEILING.
3. FOR MECHANICAL SYSTEMS SERVING THE CORRIDORS, THE O.A. INTAKE LOUVER SHALL BE INSTALLED A MINIMUM OF 10'-0" FROM APARTMENT UNITS TOILET EXHAUST. ADJUST TERMINATION POINT OF EXHAUST DUCTS AS NECESSARY FOR EACH APARTMENT UNIT.
4. ALTERNATE ROUTING OF ORYDOR AND TOILET EXHAUST DUCT IN APARTMENT UNITS SHALL BE USED TO AVOID THE 10'-0" WITH 10'-0" CLEARANCE REQUIREMENT FROM CORRIDOR OUTDOOR AIR INTAKE.
5. APARTMENT UNIT WINDOWS OPEN SO THAT THE TOP OF OPENING IS AT 5'-0". A.F.F. EXHAUST TERMINATIONS ARE LOCATED ABOVE THE CEILING OF APARTMENTS WHICH IS LOCATED AT 9'-0" A.F.F. THIS CREATES A MINIMUM 4'-0" CLEAR FROM BUILDING OPENING TO A VENT CAP.

KEY NOTES:

- ① TOILET EXHAUST OUTLET.
- ② DRYER EXHAUST VENT OUTLET.
- ③ O.A. INTAKE INLET. MAINTAIN 10'-0" FROM ANY EXHAUST OUTLET AS SHOWN ON THESE PLANS.

1 BUILDING 1000B PROJECT LEVEL 6

SCALE: 1/8" = 1'-0"

REVISION #1 SUMMARY - FM COMMENTS
1. CORRIDOR BACKGROUND REVISED. MOVED HVAC EQUIPMENT.