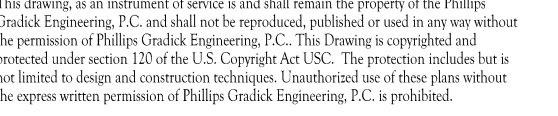
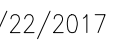




SOUTH TERRACES
5 PERIMETER CENTER PLACE, SUITE 950
ATLANTA, GEORGIA 30346
TELEPHONE: 770 396 7248
FAX: 770 396 2945

WWW.THEPRESTONPARTNERSHIP.COM
CONSULTANT





PROJECT _____

REVEL AT THE BALLPARK PHASE II

885 CRESCENT PKWY
SMYRNA, GA 30080

OR _____



438 PEACHTREE ROAD
SUITE 1425
ATLANTA, GA 30326

SUES & - REVISIONS _____ DATE _____

CONCEPTUAL DESIGN	8/21/15
50% PROGRESS SET	09/28/15
60% PRICING SET	10/14/15
FOUNDATION PACKAGE	12/07/15
60% PACKAGE	04/03/17
PERMIT SET	05/22/17

DATE 05/22/2017

1493101

DRAWN BY _____ LD
 CHECKED BY _____ CMG

SHEET TITLE _____

BUILDING 2000 PROJECT -
LEVEL 5

SHEET NUMBER _____

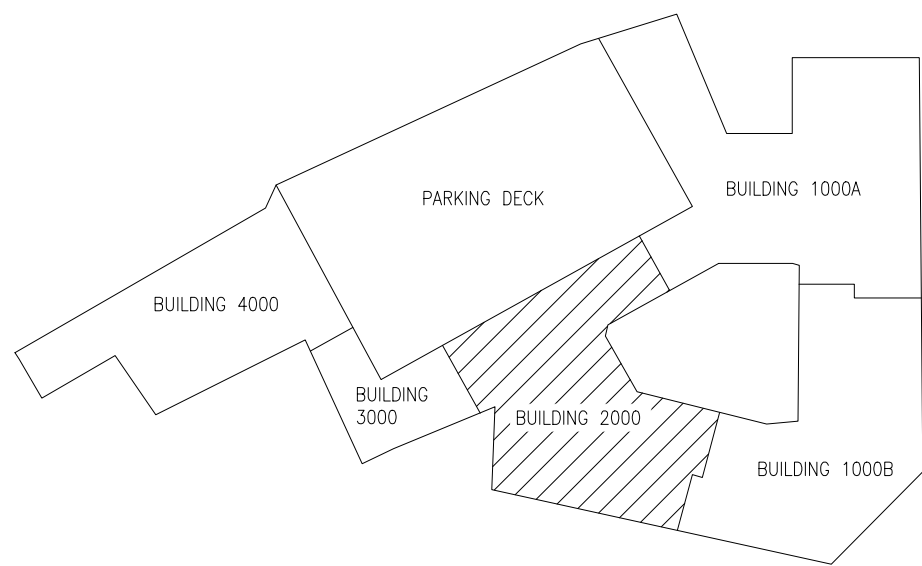
M1-25

COMMENTS

© 2017 The Preston Partnership, LL



KEY PLAN



BUILDING 2000 PROJECT LEVEL 5

SCALE: 1/8" = 1'-0"

NOTES:

1. SEE SHEET M.3.XX FOR APARTMENT HVAC.
2. UNLESS NOTED OTHERWISE, ALL CEILINGS ARE PART OF A RATED FLOOR/CEILING ASSEMBLY. REQUIRE A CEILING RADIATION DAMPER (CRD) AT EACH PENETRATION OF CEILING.
3. FOR MECHANICAL SYSTEMS SERVING THE CORRIDORS, THE O.A. INTAKE LOUVER SHALL BE INSTALLED A MINIMUM OF 10'-0" FROM APARTMENT UNITS TOILET EXHAUST. ADJUST TERMINATION POINT OF EXHAUST DUCTS AS NECESSARY FOR EACH APARTMENT UNIT.
4. ALTERNATE ROUTING OF DRYER AND TOILET EXHAUST DUCT IN APARTMENT UNITS SHOWN HERE, TO AVOID CONFLICT WITH 10'-0" CLEARANCE REQUIREMENT FROM CORRIDOR OUTDOOR AIR INTAKE.
5. APARTMENT UNIT WINDOWS OPEN SO THAT THE TOP OF OPENING IS AT 5'-0" A.F.F. FROM THE CEILING. THE CEILING IS 8'-0" ABOVE THE CEILING OF APARTMENTS WHICH IS LOCATED AT 9'-0" A.F.F. THIS CREATES A MINIMUM 4'-0" CLEAR FROM BUILDING OPENING TO A VENT CAP.

KEY NOTES:

- ① TOILET EXHAUST OUTLET.
- ② DRYER EXHAUST VENT OUTLET.
- ③ O.A. INTAKE INLET. MAINTAIN 10'-0" FROM ANY EXHAUST OUTLET AS SHOWN ON THESE PLANS.