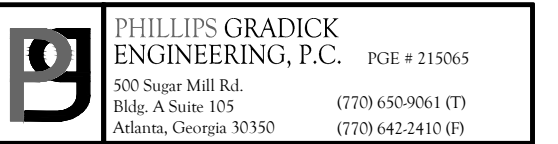




SOUTH TERRACES  
5 PERIMETER CENTER PLACE, SUITE 950  
ATLANTA, GEORGIA 30346  
TELEPHONE: 770 396 7248  
FAX: 770 396 2945

WWW.THEPRESTONPARTNERSHIP.COM  
CONSULTANT



This drawing, as an instrument of service to and shall remain the property of the Phillips Grindtek Engineering, P.C. and shall not be reproduced, published or used in any way without the permission of Phillips Grindtek Engineering, P.C. This Drawing is copyrighted and protected under section 110 of the U.S. Copyright Act USC. The protection includes but is not limited to design and construction techniques. Unauthorized use of these plans without the express written permission of Phillips Grindtek Engineering, P.C. is prohibited.

REAL \_\_\_\_\_



/02/2017

PROJECT \_\_\_\_\_

## REVEL AT THE BALLPARK PHASE II

885 CRESCENT PKWY  
SMYRNA, GA 30080

OR \_\_\_\_\_



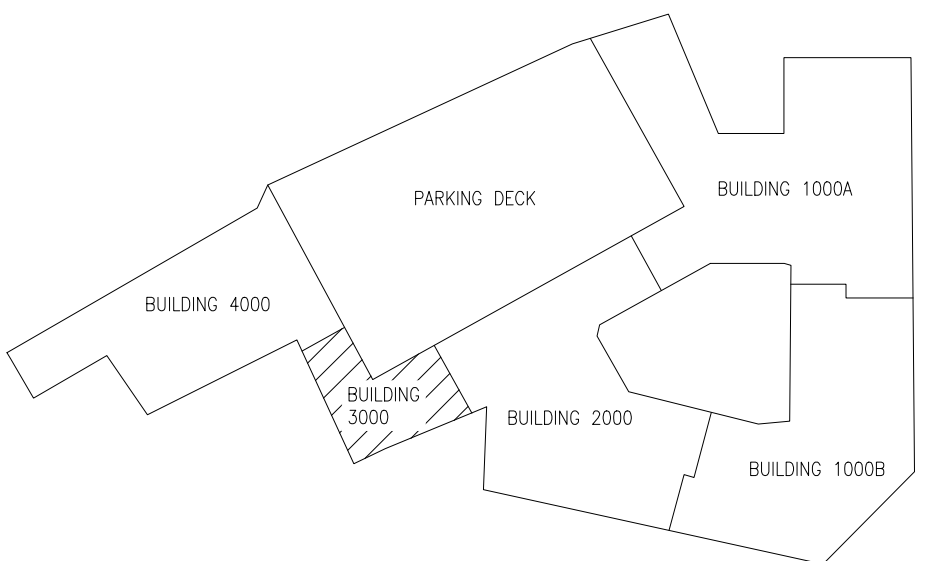
ATLANTIC REALTY  
PARTNERS

438 PEACHTREE ROAD  
SUITE 1425  
ATLANTA, GA 30326

SUES &  $\Delta$  - REVISIONS \_\_\_\_\_ DATE \_\_\_\_\_

CONCEPTUAL DESIGN	8/21/15
SD PROGRESS SET	09/28/15
SMP PRICING SET	10/14/15
FOUNDATION PACKAGE	12/07/15
SMP PACKAGE	04/03/17
PERMIT SET	05/22/17
PERMIT REVISIONS	10/02/2017

## KEY PLAN



DATE 05/22/2017

1493101

DRAWN BY \_\_\_\_\_ ID \_\_\_\_\_

CHECKED BY \_\_\_\_\_ CMG

SHEET TITLE \_\_\_\_\_

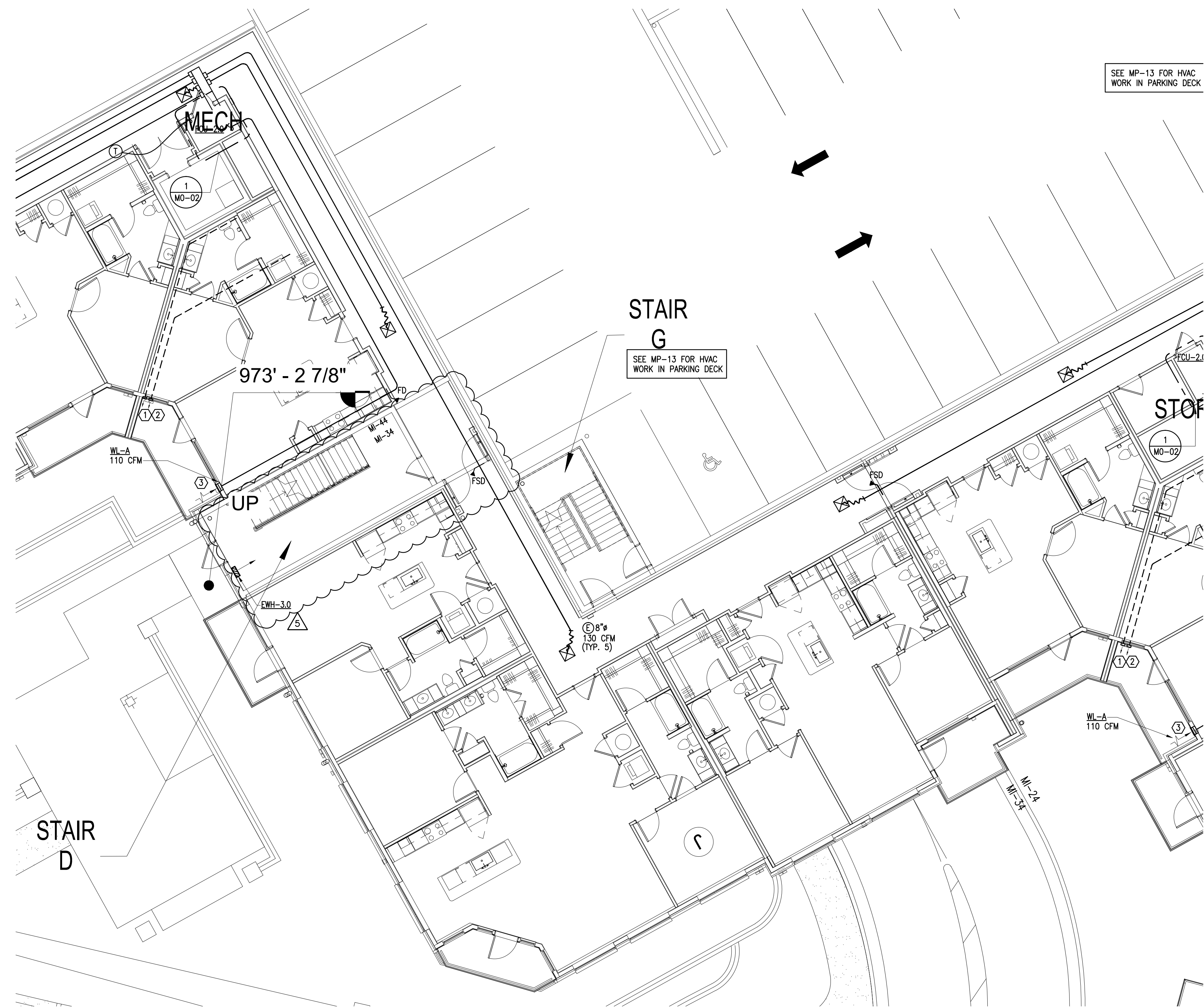
BUILDING 3000 PROJECT -  
LEVEL 4

SHEET NUMBER \_\_\_\_\_

M1-34

COMMENTS \_\_\_\_\_

© 2017 The Preston Partnership, LL



NOTES:

1. SEE SLT MAX3X FOR APARTMENT HVAC.
2. UNLESS NOTED OTHERWISE, ALL CEILINGS ARE PART OF A RATED FLOOR/CEILING ASSEMBLY AND REQUIRE A CEILING RADIATION DAMPER (CRD) AT EACH PENETRATION OF CEILING.
3. FOR MECHANICAL SYSTEMS SERVING THE CORRIDORS, THE O.A. INTAKE LOUVER SHALL BE INSTALLED A MINIMUM OF 10'-0" FROM APARTMENT UNITS TOILET EXHAUST. ADJUST TERMINATION POINT OF EXHAUST DUCTS AS NECESSARY FOR EACH APARTMENT UNIT.
4. ALTERNATE ROUTING OF DRYER AND TOILET EXHAUST DUCT IN APARTMENT UNITS SHOWS HERE. TO AVOID CONFLICT WITH 10'-0" CLEARANCE REQUIREMENT FROM CORRIDOR OUTDOOR AIR INTAKE.
5. APARTMENT UNIT WINDOWS OPEN SO THAT THE TOP OF OPENING IS AT 5'-0" AFF. EXHAUST TERMINATIONS ARE LOCATED ABOVE THE CEILING OF APARTMENT UNITS 2' TO 3' ABOVE AFF. THIS CREATES A MINIMUM 4'-0" CLEAR FROM BUILDING OPENING TO A VENT CAP.

KEY NOTES:

- ① TOILET EXHAUST OUTLET.
- ② DRYER EXHAUST VENT OUTLET.
- ③ O.A. INTAKE INLET. MAINTAIN 10'-0" FROM ANY EXHAUST OUTLET AS SHOWN ON THESE PLANS.

**1 BUILDING 3000 PROJECT LEVEL 4**  
SCALE: 1/8" = 1'-0"

SCALE: 1/8" = 1'-0"