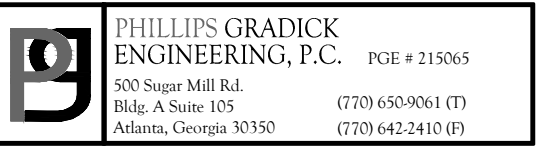




SOUTH TERRACES
5 PERIMETER CENTER PLACE, SUITE 950
ATLANTA, GEORGIA 30346
TELEPHONE: 770 396 7248
FAX: 770 396 2945

WWW.THEPRESTONPARTNERSHIP.COM
CONSULTANT



This drawing, as an instrument of service to and shall remain the property of the Phillips Cradick Engineering, P.C. and shall not be reproduced, published or used in any way without the permission of Phillips Cradick Engineering, P.C.. This Drawing is copyrighted and protected under section 120 of the U.S. Copyright Act USC. The protection includes but is not limited to design and construction techniques. Unauthorized use of these plans without the express written permission of Phillips Cradick Engineering, P.C. is prohibited.



12/22/2017

PROJECT _____

REVEL AT THE BALLPARK PHASE II

885 CRESCENT PKWY
SMYRNA, GA 30080

OR _____



ATLANTIC REALTY
PARTNERS

438 PEACHTREE ROAD
SUITE 1425
ATLANTA, GA 30326

SUES & \triangle - REVISIONS _____ DATE _____

CONCEPTUAL DESIGN	8/21/15
SD PROGRESS SET	09/28/15
SMP PRICING SET	10/14/15
FOUNDATION PACKAGE	12/07/15
SMP PACKAGE	04/03/17
PERMIT SET	05/22/17

[illegible]

DATE 05/22/2017

1493101

DRAWN BY _____ LD _____

CHECKED BY _____

SHEET TITLE _____ CMG

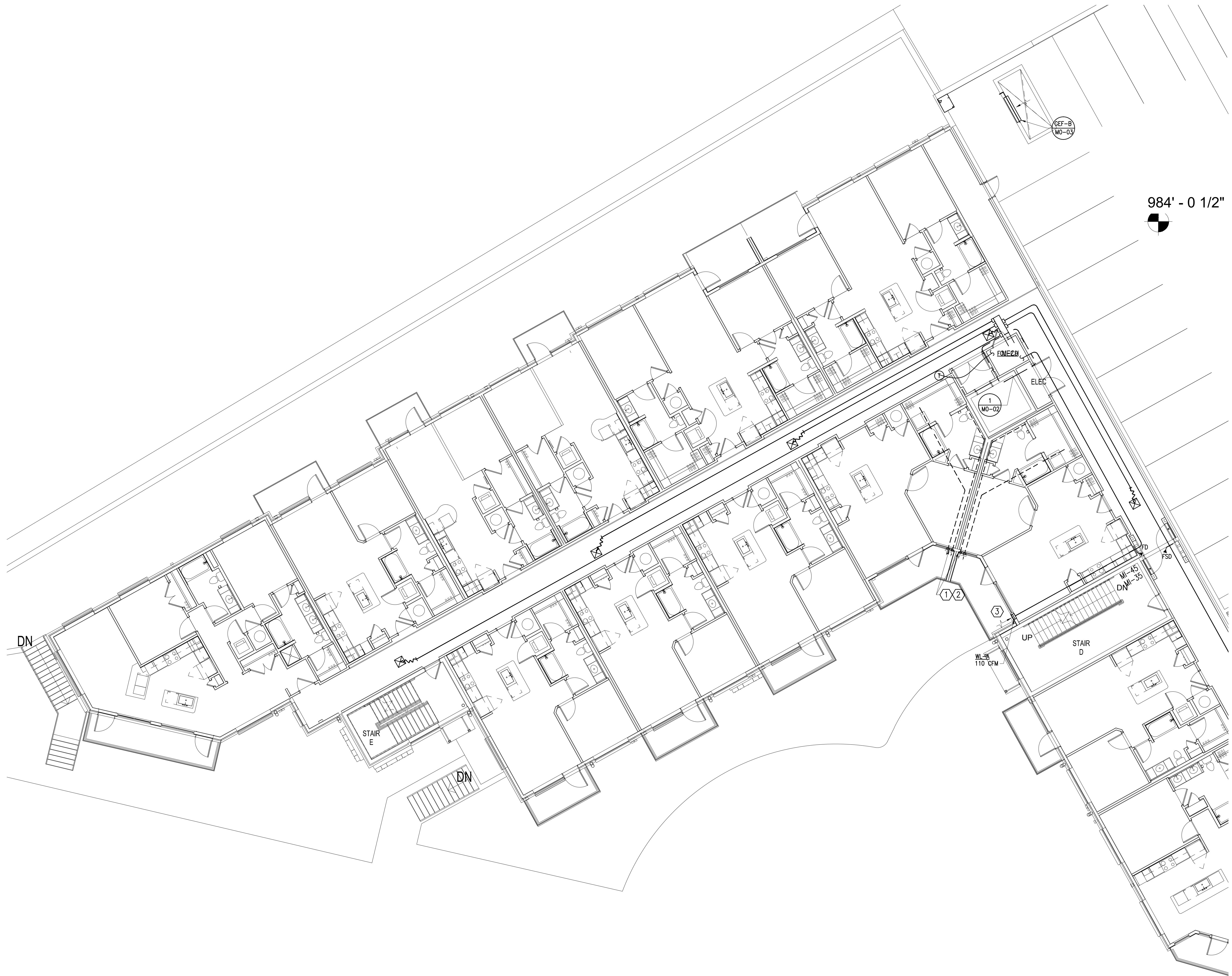
BUILDING 4000 PROJECT -
LEVEL 5

SHEET NUMBER _____

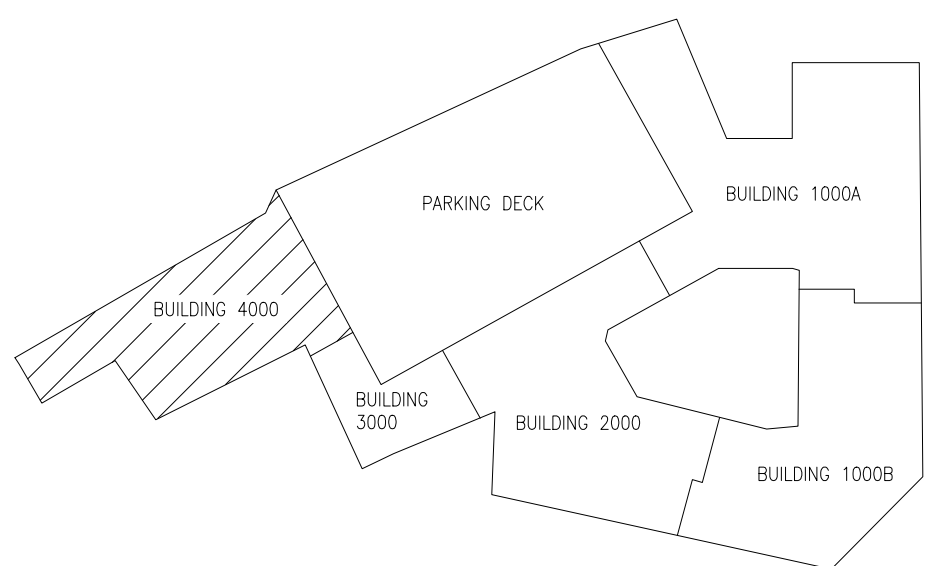
M1-45

COMMENTS _____

© 2017 The Preston Partnership, LL



KEY PLAN



NOTES:

1. SEE SHEET M3.3XX FOR APARTMENT HVAC.
2. UNLESS NOTED OTHERWISE, ALL CEILINGS ARE PART OF A RATED FLOOR/CEILING ASSEMBLY AND REQUIRE A CEILING RADIATION DAMPER (CRD) AT EACH PENETRATION OF CEILING.
3. FOR MECHANICAL SYSTEMS SERVING THE CORRIDORS, THE G.A. INTAKE LOUVER SHALL BE INSTALLED A MINIMUM OF 10'-0" FROM APARTMENT UNITS TOILET EXHAUST. ADJUST TERMINATION POINT OF EXHAUST DUCTS AS NECESSARY FOR EACH APARTMENT UNIT.
4. ALTERNATE ROUTING OF DRYER AND TOILET EXHAUST DUCT IN APARTMENT UNITS SHOWN HERE TO AVOID CONFLICT WITH 10'-0" CLEARANCE REQUIREMENT FROM CORRIDOR OUTDOOR AIR INTAKE.
5. APARTMENT UNIT WINDOWS OPEN TO THAT THE TOP OF CEILING IS AT 5'-0" MINIMUM. THE CEILING IS LOCATED ABOVE THE CEILING OF APARTMENTS WHICH IS LOCATED AT 9'-0" A.F.F. THIS CREATES A MINIMUM 4'-0" CLEAR FROM BUILDING OPENING TO A VENT CAP.

KEY NOTES:

- ① TOILET EXHAUST OUTLET.
- ② DRYER EXHAUST VENT OUTLET.
- ③ O.A. INTAKE INLET. MAINTAIN 10'-0" FROM ANY EXHAUST OUTLET AS SHOWN ON THESE PLANS.

1 BUILDING 4000 PROJECT LEVEL 5

SCALE: 1/8" = 1'-0"