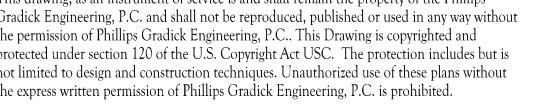




SOUTH TERRACES
5 PERIMETER CENTER PLACE, SUITE 950
ATLANTA, GEORGIA 30346
TELEPHONE: 770 396 7248
FAX: 770 396 2945

WWW.THEPRESTONPARTNERSHIP.COM
CONSULTANT



REAL _____



PROJECT _____

REVEL AT THE BALLPARK PHASE II

885 CRESCENT PKWY
SMYRNA, GA 30080

OR _____



438 PEACHTREE ROAD
SUITE 1425
ATLANTA, GA 30326

SUES & - REVISIONS _____ DATE _____

CONCEPTUAL DESIGN	8/21/15
50% PROGRESS SET	09/28/15
100% PRICING SET	10/14/15
FOUNDATION PACKAGE	12/07/15
100% PACKAGE	04/03/17
PERMIT SET	05/22/17

[illegible]

DATE 05/22/2017

1493101

CHECKED BY _____ CMG

SHEET TITLE _____

BUILDING 4000 PROJECT -

LEVEL 6

SHEET NUMBER _____

M1 46

MI 1-40

COMMENTS

11/10 合衆国、日本、中国、韓国、台湾

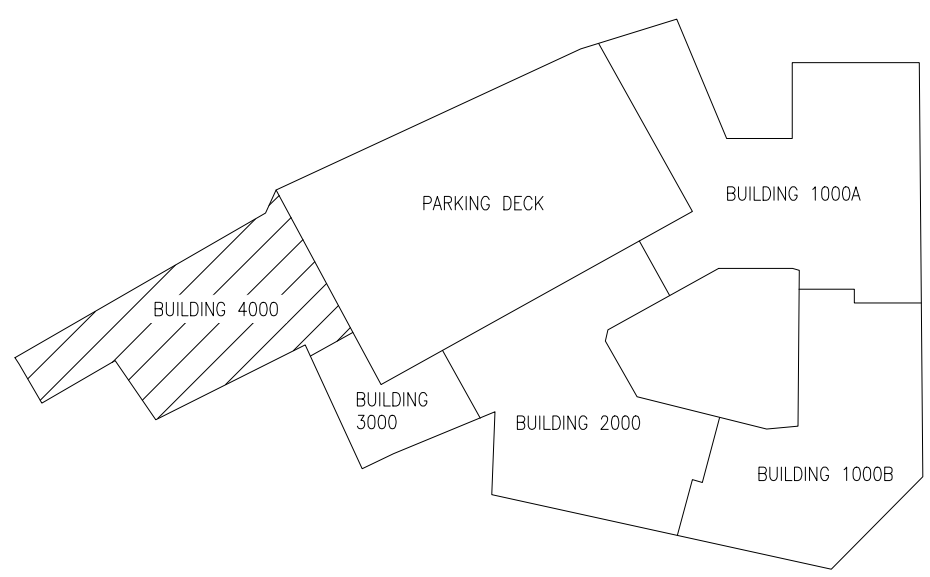
© 2017 The Flexx Partnership, LLC



1 BUILDING 4000 PROJECT LEVEL 6
SCALE: 1/8" = 1'-0"

SCALE: 1/8" = 1'-0"

KEY PLAN



- NOTES:
1. SEE SHEET M3.XX FOR APARTMENT HVAC.
 2. UNLESS NOTED OTHERWISE, ALL CEILINGS ARE PART OF A RATED FLOOR/CEILING ASSEMBLY, AND REQUIRE A CEILING RADIATION DAMPER (CRD) AT EACH PENETRATION OF CEILING.
 3. FOR MECHANICAL SYSTEMS SERVING THE CORRIDORS, THE O.A. INTAKE LOWER SHALL BE INSTALLED A MINIMUM OF 10'-0" FROM APARTMENT UNITS TO EXHAUST AIRSIDE TERMINATION POINT OF EXHAUST DUCTS AS NECESSARY FOR EACH APARTMENT UNIT.
 4. ALTERNATE ROUTING OF DRYER AND TOILET EXHAUST DUCT IN APARTMENT UNITS HERE TO AVOID CONTACT WITH 10'-0" CLEARANCE REQUIREMENT FROM CORRIDOR OUTDOOR AIR INTAKE.
 5. APARTMENT WINDOW UNITS OPEN SO THAT THE TOP OF OPENING IS AT 5'-0" A.F.F. EXHAUST TERMINATIONS ARE LOCATED ABOVE THE CEILING OF APARTMENT WHICH IS LOCATED AT 9'-0" A.F.F. THIS CREATES A MINIMUM 4'-0" CLEAR FROM BUILDING OPENING TO A VENT CAP.

KEY NOTES:

- ① TOILET EXHAUST OUTLET.
- ② DRYER EXHAUST VENT OUTLET.
- ③ O.A. INTAKE INLET. MAINTAIN 10'-0" FROM ANY EXHAUST OUTLET AS SHOWN ON THESE PLANS.