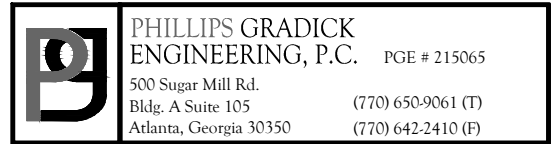


THE PRESTON  
PARTNERSHIP, LLC  
A MULTI-DISCIPLINARY DESIGN FIRM

SOUTH TERRACES  
115 PERIMETER CENTER PLACE, SUITE 950  
ATLANTA, GEORGIA 30346  
TELEPHONE: 770 396 7248  
FAX: 770 396 2945

WWW.THEPRESTONPARTNERSHIP.COM  
CONSULTANT



PHILLIPS GRADICK  
ENGINEERING, P.C. PGE # 215065  
500 Super Mile Rd.  
Bldg. A Suite 100  
Atlanta, Georgia 30308 (770) 660-9001 (F)  
(770) 660-2410 (B)

By printing, or otherwise using, or making copies of, or preparing for others, this drawing, the user agrees to indemnify and hold harmless the firm of Phillips Gradick Engineering, P.C. from and against all claims, damages, costs and expenses, including reasonable attorneys' fees, that may be incurred by the firm of Phillips Gradick Engineering, P.C. in connection with the use of this drawing. The user's obligation to indemnify and hold harmless the firm of Phillips Gradick Engineering, P.C. shall survive the termination or expiration of this agreement. This document is the property of Phillips Gradick Engineering, P.C. and shall not be reproduced, published or used in any way without the express written permission of Phillips Gradick Engineering, P.C. The permission includes but is not limited to design and construction packages. Unauthorized use or reuse shall constitute the express written permission of Phillips Gradick Engineering, P.C. is prohibited.

SEAL



5/22/2017

PROJECT

REVEL AT THE  
BALLPARK  
PHASE II  
2885 CRESCENT PKWY  
SMYRNA, GA 30080

FOR



ATLANTIC REALTY  
PARTNERS

3438 PEACHTREE ROAD  
SUITE 1425  
ATLANTA, GA 30326

ISSUES & REVISIONS

ISSUES & REVISIONS	DATE
CONCEPTUAL DESIGN	8/21/15
50% PROGRESS SET	09/28/15
CMR PRICING SET	10/14/15
FOUNDATION PACKAGE	12/07/15
CMR PACKAGE	04/03/17
PERMIT SET	05/22/17

DATE 05/22/2017

JOB NUMBER 1493101

DRAWN BY LD

CHECKED BY CMG

SHEET TITLE

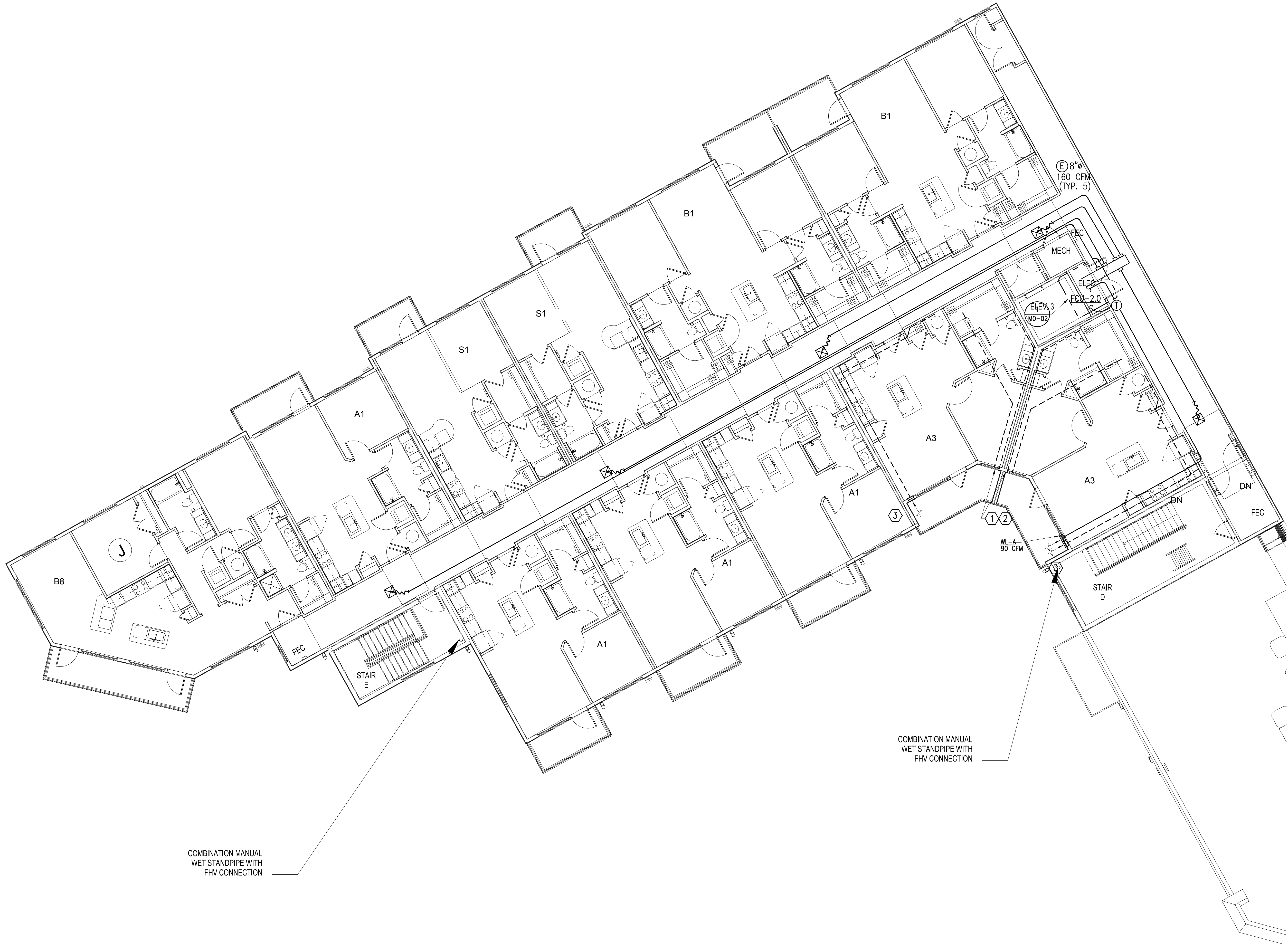
BUILDING 4000 PROJECT  
LEVEL 9

SHEET NUMBER

M1-49

COMMENTS

30X42 © 2017 The Preston Partnership, LLC



- NOTES:
- SEE SHEET M3.XX FOR APARTMENT HVAC.
  - UNLESS NOTED OTHERWISE, ALL CEILINGS ARE PART OF A RATED FLOOR/CEILING ASSEMBLY, AND REQUIRE A CEILING RADIATION DAMPER (CRD) AT EACH PENETRATION OF CEILING.
  - FOR MECHANICAL SYSTEMS SERVING THE CORRIDORS, THE O.A. INTAKE LOUVER SHALL BE INSTALLED A MINIMUM OF 10'-0" FROM APARTMENT UNITS TOILET EXHAUST. ADJUST TERMINATION POINT OF EXHAUST DUCTS AS NECESSARY FOR EACH APARTMENT UNIT.
  - ALTERNATE ROUTING OF DRYER AND TOILET EXHAUST DUCT IN APARTMENT UNITS SHOWN HERE, TO AVOID CONFLICT WITH 10'-0" CLEARANCE REQUIREMENT FROM CORRIDOR OUTDOOR AIR INTAKE.
  - APARTMENT UNIT WINDOWS OPEN SO THAT THE TOP OF OPENING IS AT 5'-0" A.F.F. EXHAUST TERMINATIONS ARE LOCATED ABOVE THE CEILING OF APARTMENTS WHICH IS LOCATED AT 8'-0" A.F.F. THIS CREATES A MINIMUM 4'-0" CLEAR FROM BUILDING OPENING TO A VENT CAP.

- KEY NOTES:
- TOILET EXHAUST OUTLET.
  - DRYER EXHAUST VENT OUTLET.
  - O.A. INTAKE INLET. MAINTAIN 10'-0" FROM ANY EXHAUST OUTLET AS SHOWN ON THESE PLANS.

1 BUILDING 4000 PROJECT LEVEL 9  
SCALE: 1/8" = 1'-0"

KEY PLAN

