

**THE PRESTON  
PARTNERSHIP, LLC**  
A MULTI-DISCIPLINARY DESIGN FIRM

SOUTH TERRACES  
115 PERIMETER CENTER PLACE, SUITE 950  
ATLANTA, GEORGIA 30346  
TELEPHONE: 770.396.7248  
FAX: 770.396.2945

WWW.THEPRESTONPARTNERSHIP.COM  
CONSULTANT



ALL DUCTWORK AND AIR DISTRIBUTION DEVICES IN THIS AREA ARE BELOW THE RATED FLOOR/CEILING ASSEMBLY. NO CRD'S ARE REQUIRED IN THESE CEILINGS. COORD DROPPED CEILING WITH ARCH.

SEAL



PROJECT

**REVEL AT THE  
BALLPARK  
PHASE II**  
2885 CRESCENT PKWY  
SMYRNA, GA 30080

FOR



**ATLANTIC REALTY  
PARTNERS**

3438 PEACHTREE ROAD  
SUITE 1425  
ATLANTA, GA 30326

ISSUES & REVISIONS

CONCEPTUAL DESIGN	8/21/15
50% PROGRESS SET	09/28/15
GMP PRICING SET	10/14/15
FOUNDATION PACKAGE	12/07/15
GMP PACKAGE	04/03/17
PERMIT SET	05/22/17

DATE 05/22/2017

JOB NUMBER 1493101

DRAWN BY LD

CHECKED BY CMG

SHEET TITLE

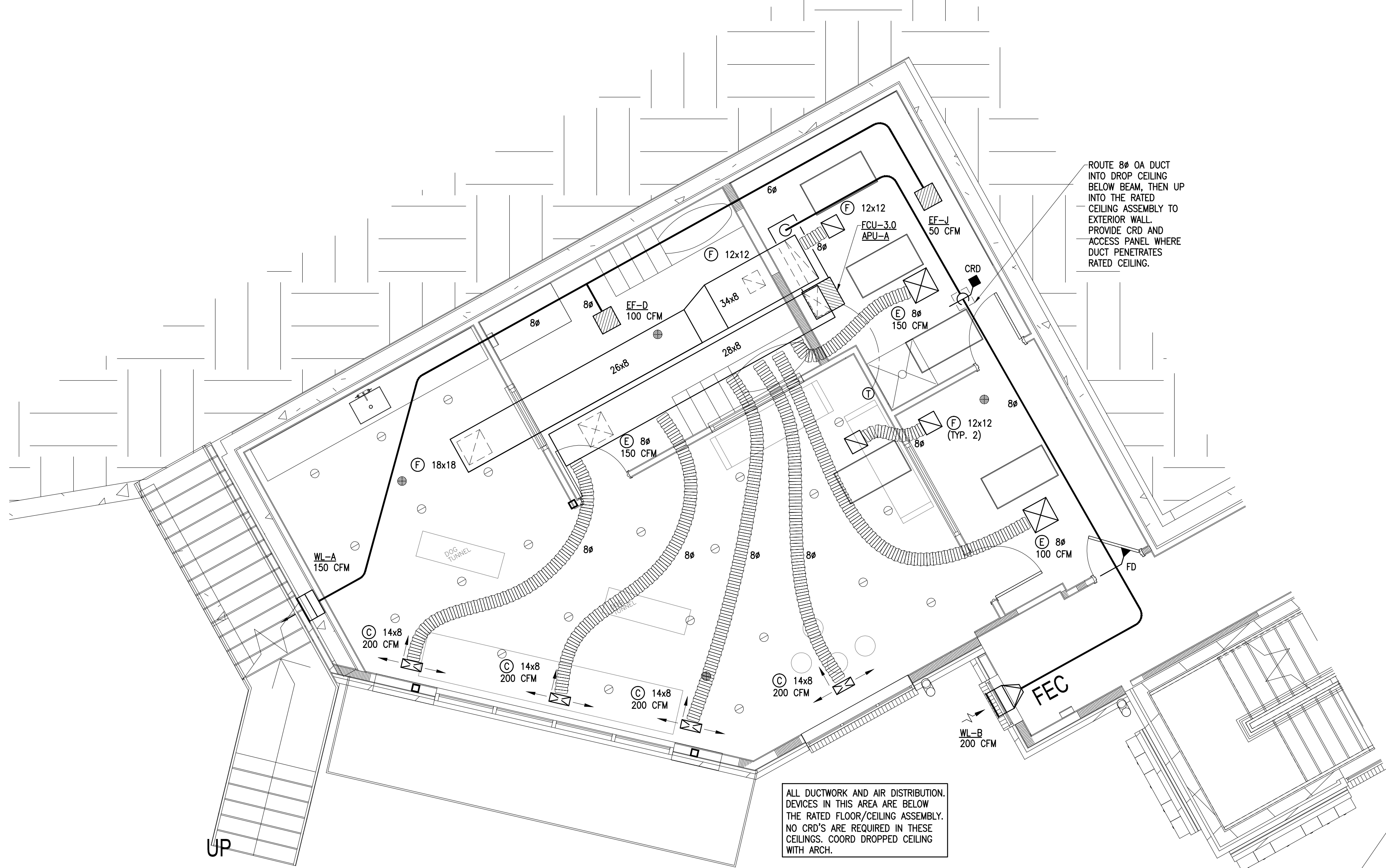
DOG WASH AND SKY LOUNGE PLANS - HVAC

SHEET NUMBER

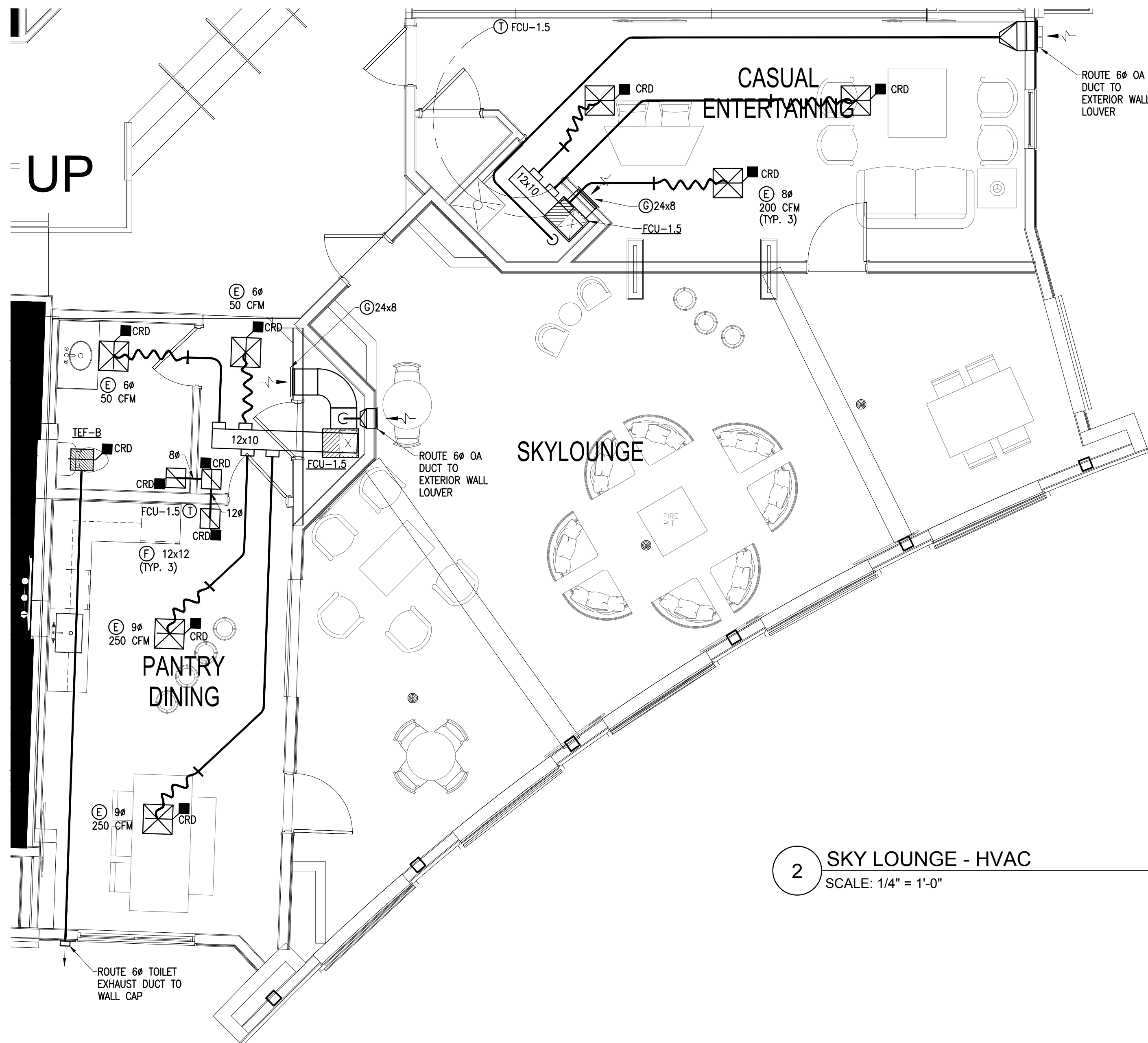
**M6-03**

COMMENTS

30X42 © 2017 The Preston Partnership, LLC



1 DOG WASH PLAN - HVAC  
SCALE: 1/4" = 1'-0"



2 SKY LOUNGE - HVAC  
SCALE: 1/4" = 1'-0"