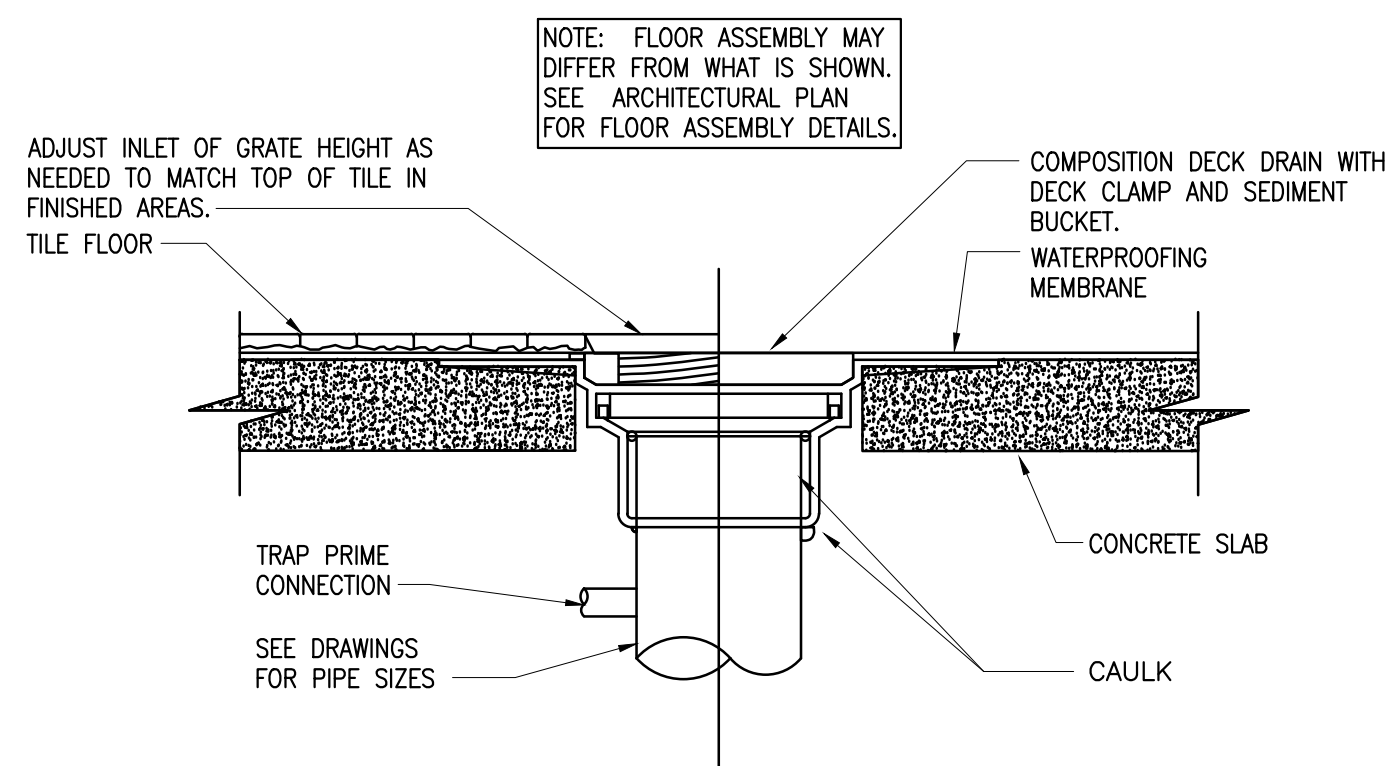


14 TRAP PRIMER DETAIL  
NO SCALE

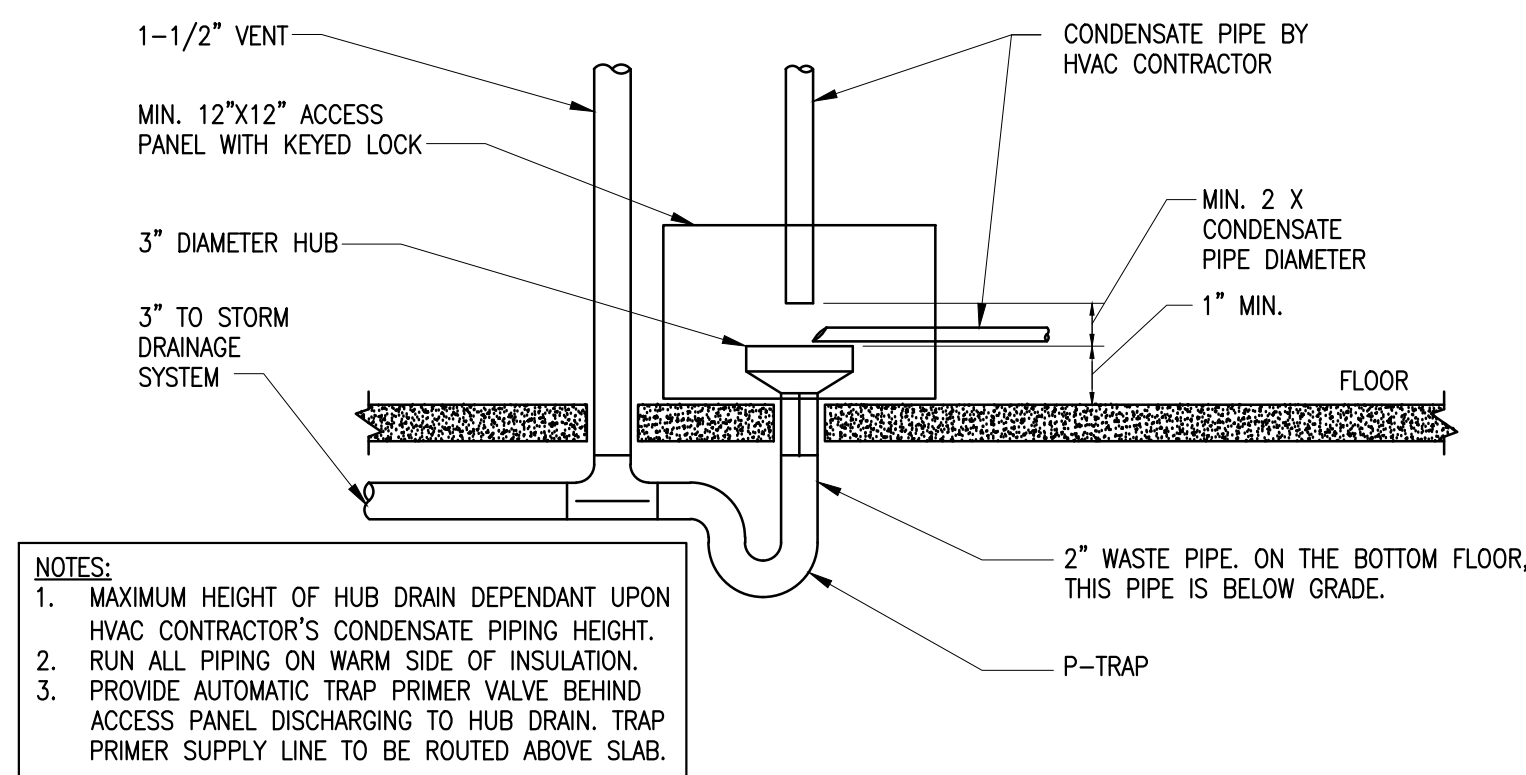


13 FLOOR DRAIN DETAIL  
NO SCALE

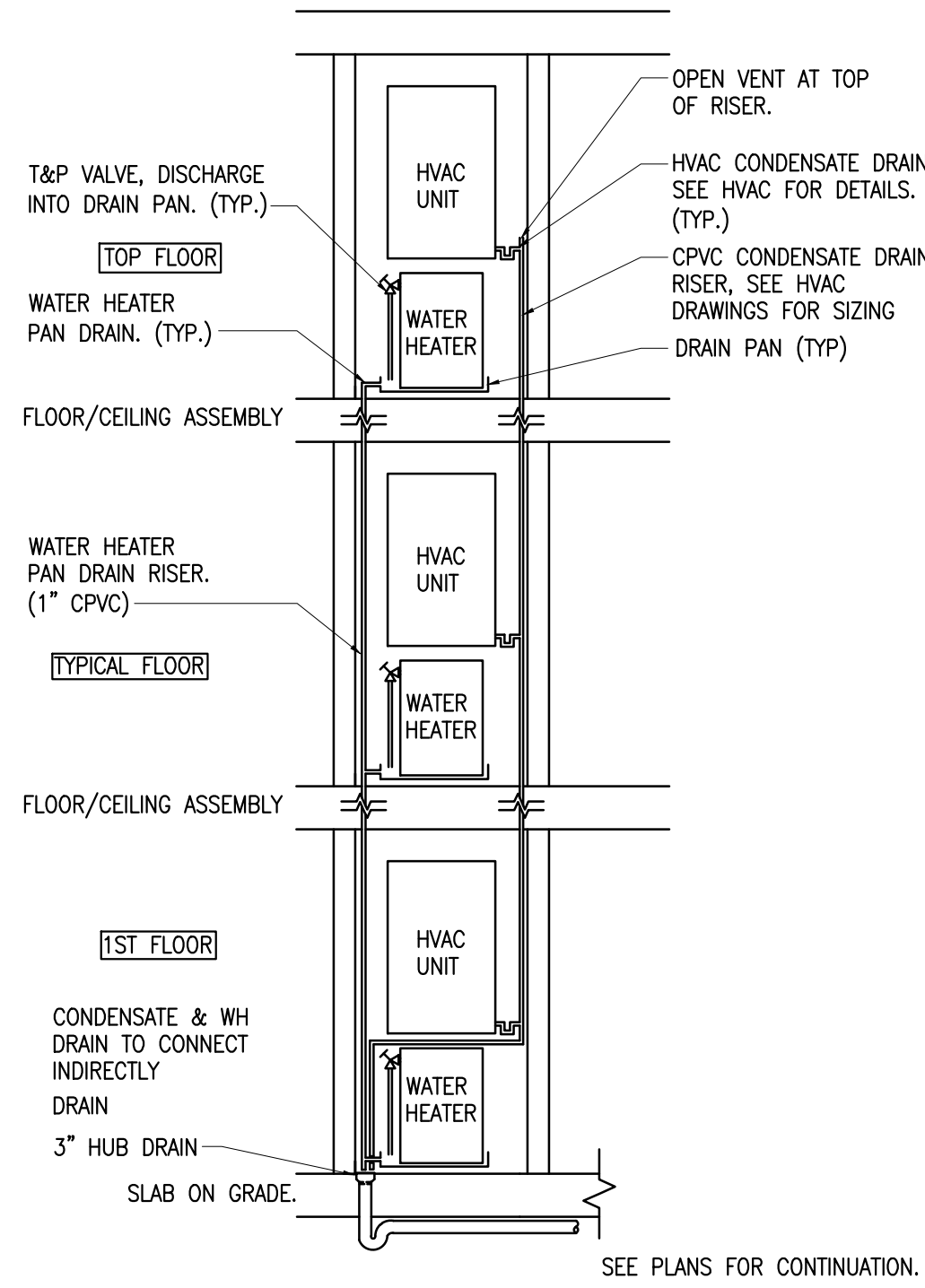
SIZE	L	L1	L2	M	S
3	17 1/2"	16 3/4"	12 3/4"	4 3/8"	6"
4	24"	17 3/4"	13 1/4"	5 1/8"	6"
6	3"	21 5/8"	15 1/8"	8 1/4"	6"

- NOTES:
1. BASED ON SPEARS PVC EXPANSION JOINT SERIES.
  2. PROVIDE EXPANSION JOINTS ON ALL VERTICAL PLUMBING RAINWATER OR WASTE RISERS.
  3. FOR BUILDINGS 4 STORIES OR TALLER, JOINTS SHALL BE INSTALLED ON ALTERNATING FLOORS.
  4. INSTALL EXPANSION JOINTS 4'-0" ABOVE FLOOR HEIGHT.
  5. EXPANSION JOINTS SHALL BE INSTALLED TO ALLOW A MINIMUM OF 2" OF EXPANSION AND CONTRACTION.
  6. PROVIDE FLOOR CLAMPS AT THE BASE OF EACH STACK ON EACH FLOOR.

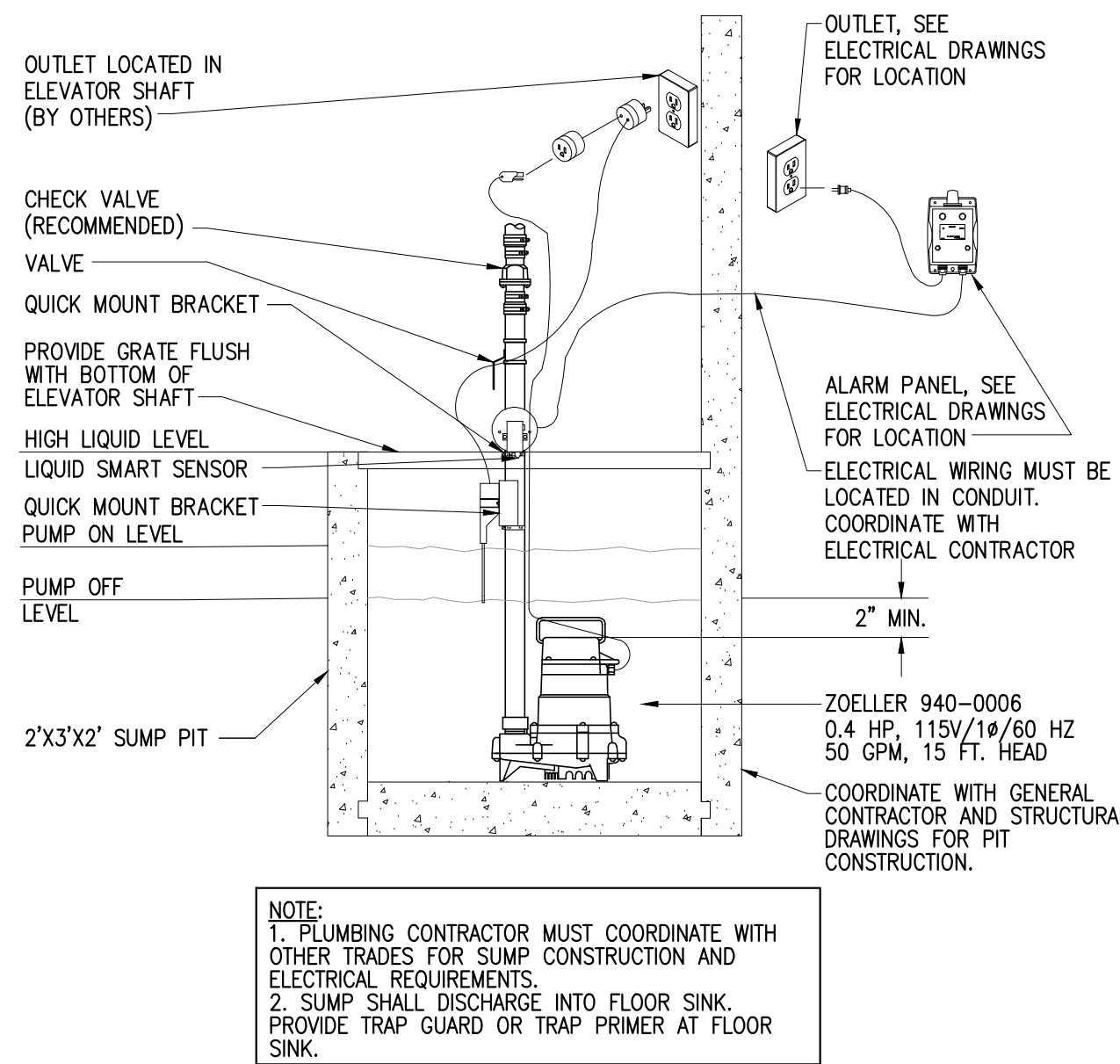
8 EXPANSION JOINT DETAIL  
NO SCALE



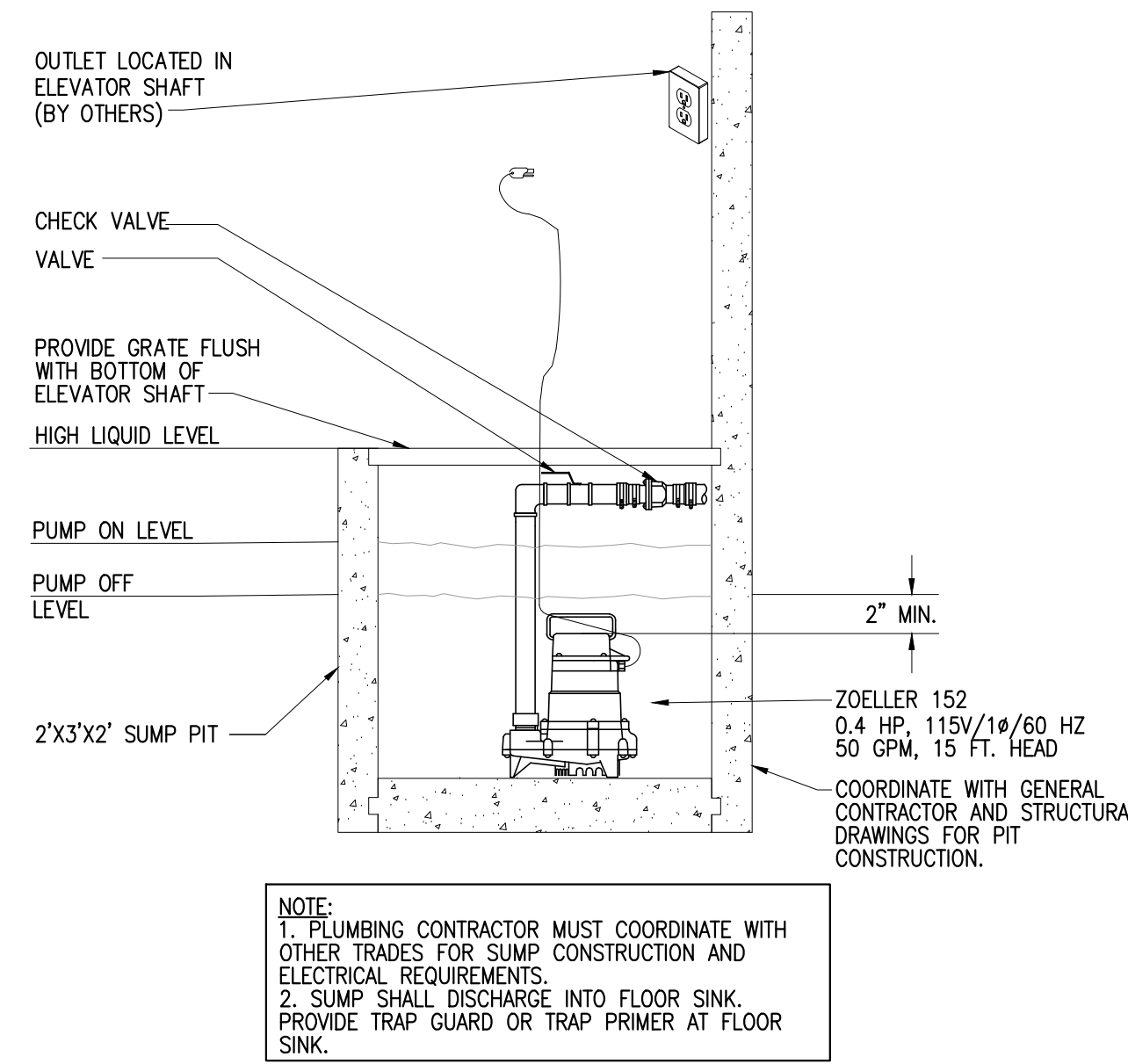
4 CONDENSATE DRAIN DETAIL  
NO SCALE



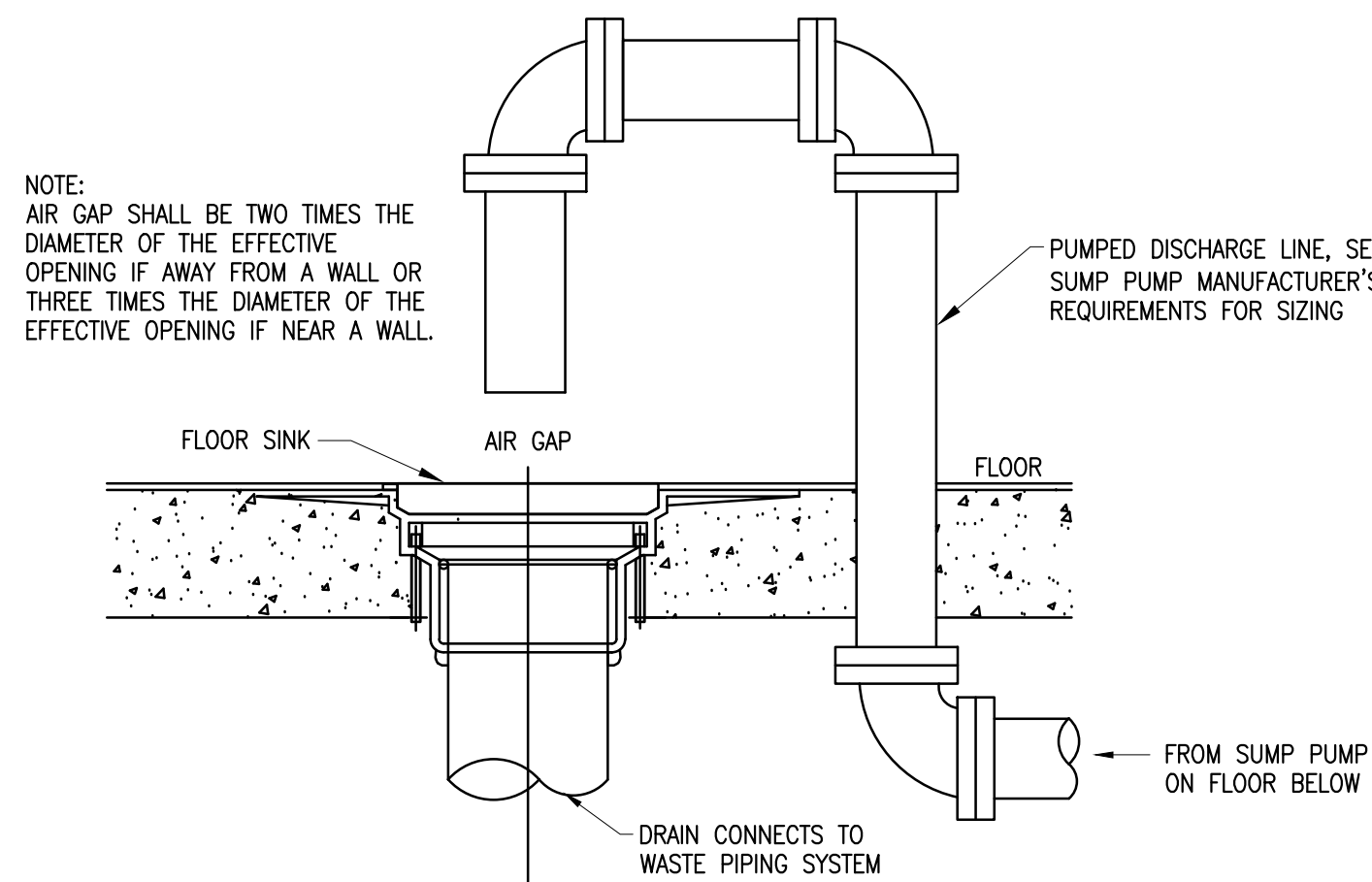
12 CONDENSATE & WATER HEATER PAN DRAIN RISER  
SCALE: NO SCALE



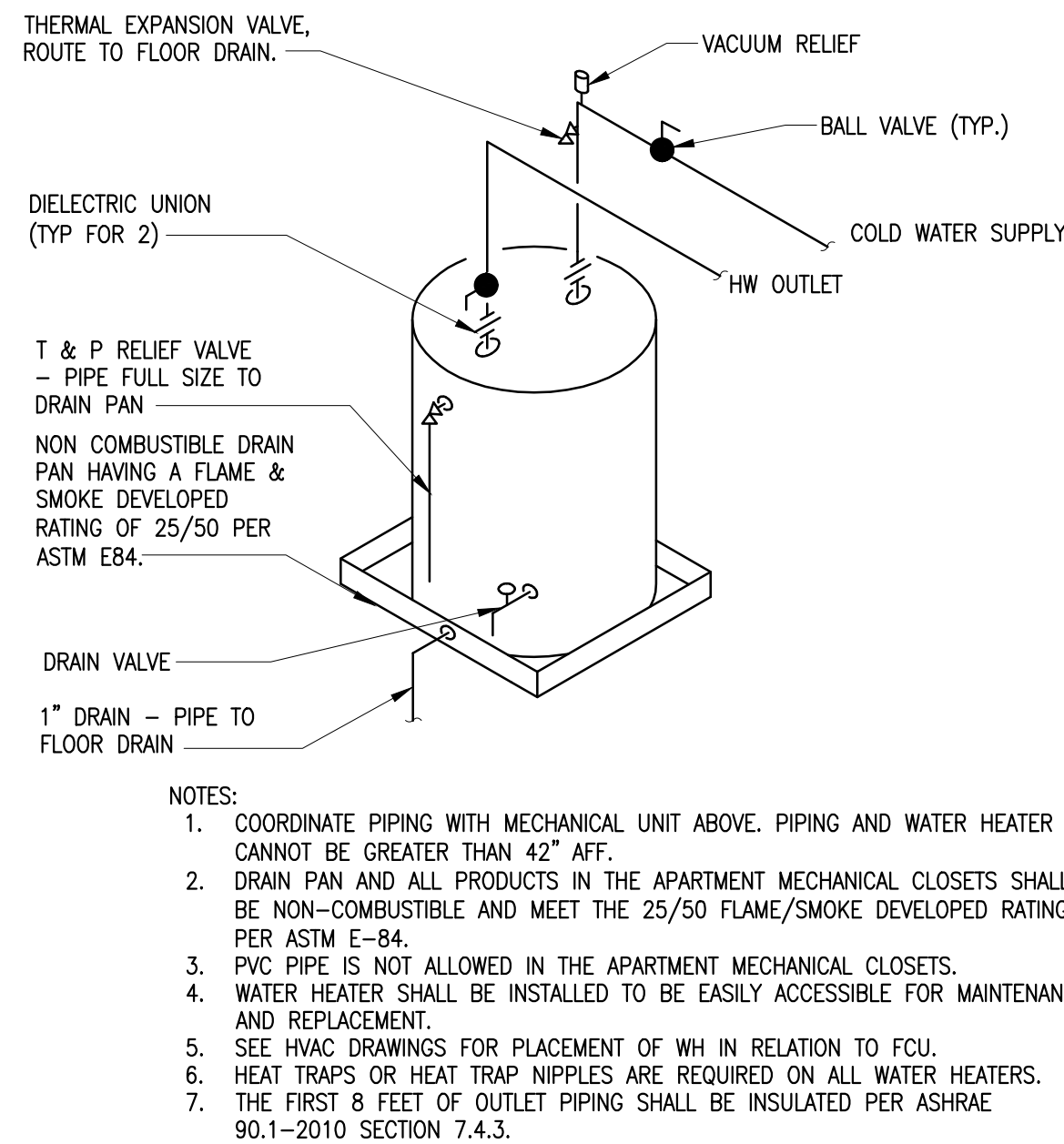
7 "OIL SENSING" ELEVATOR SUMP PUMP DETAIL  
NO SCALE



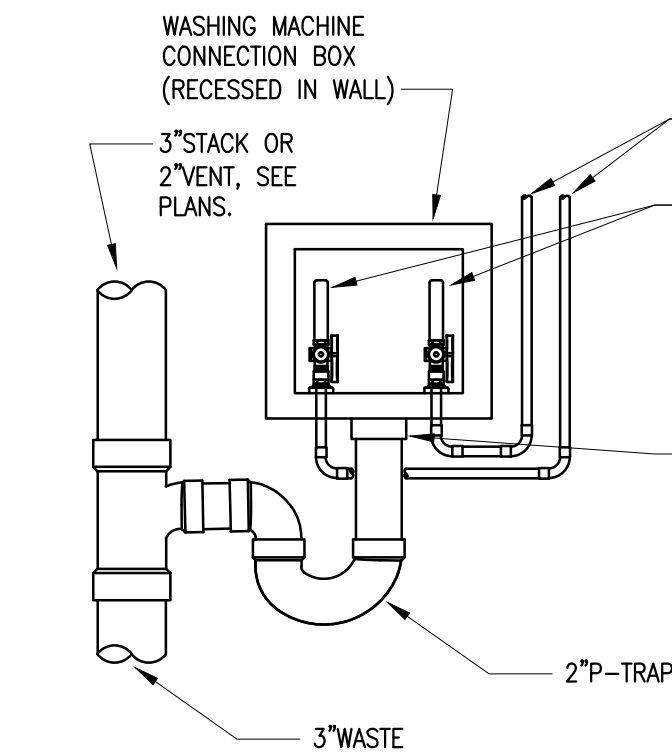
6 ELEVATOR SUMP PUMP DETAIL  
NO SCALE



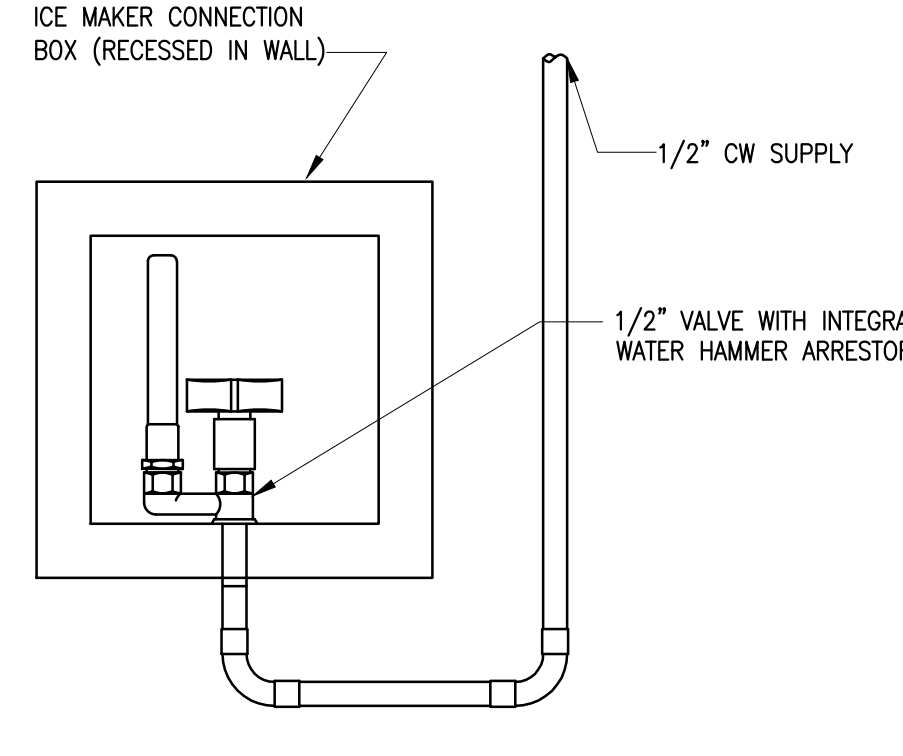
3 AIR GAP FOR SUMP PUMP DETAIL  
NO SCALE



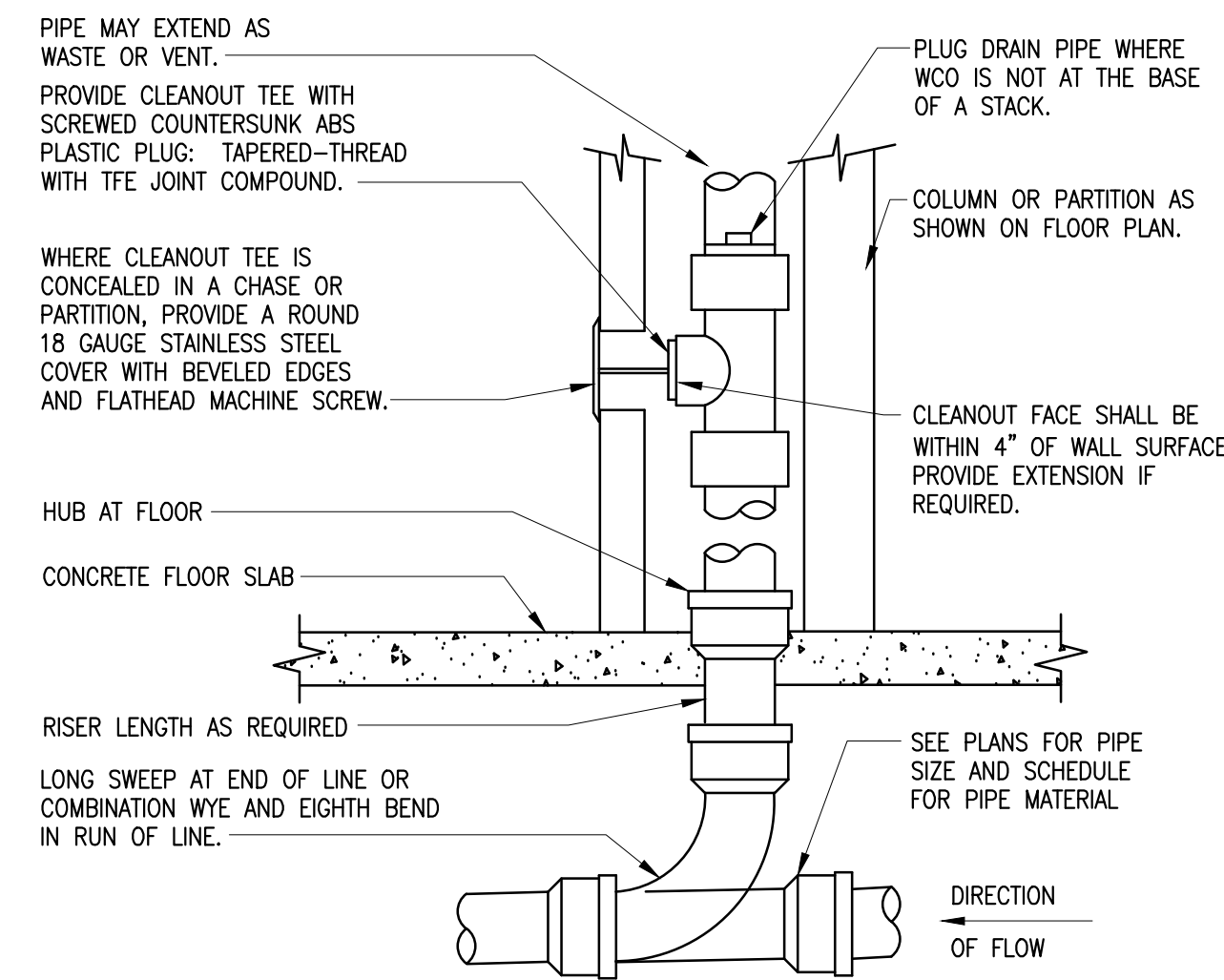
2 ELECTRIC WATER HEATER DETAIL  
NO SCALE



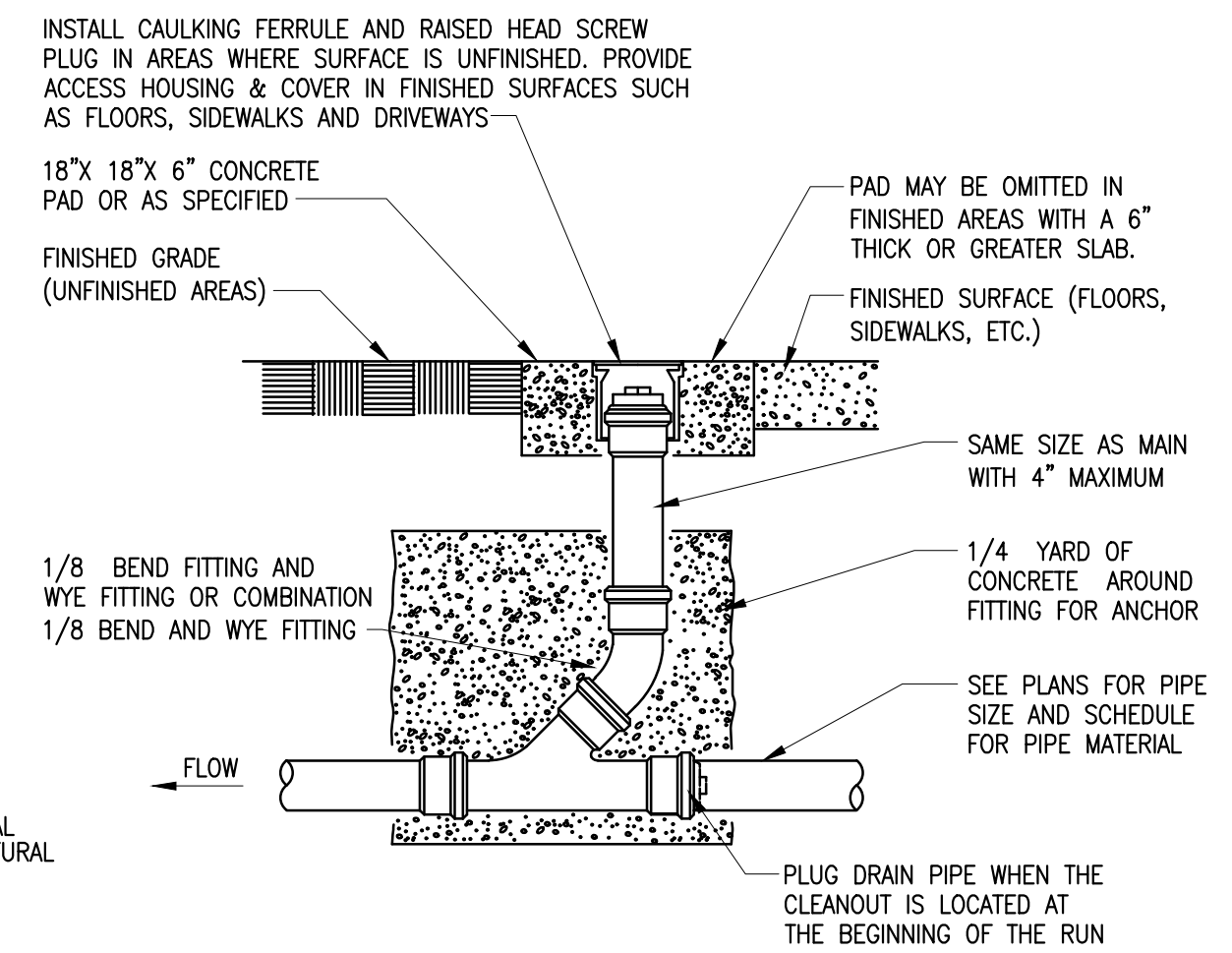
11 WASHING MACHINE BOX DETAIL  
NO SCALE



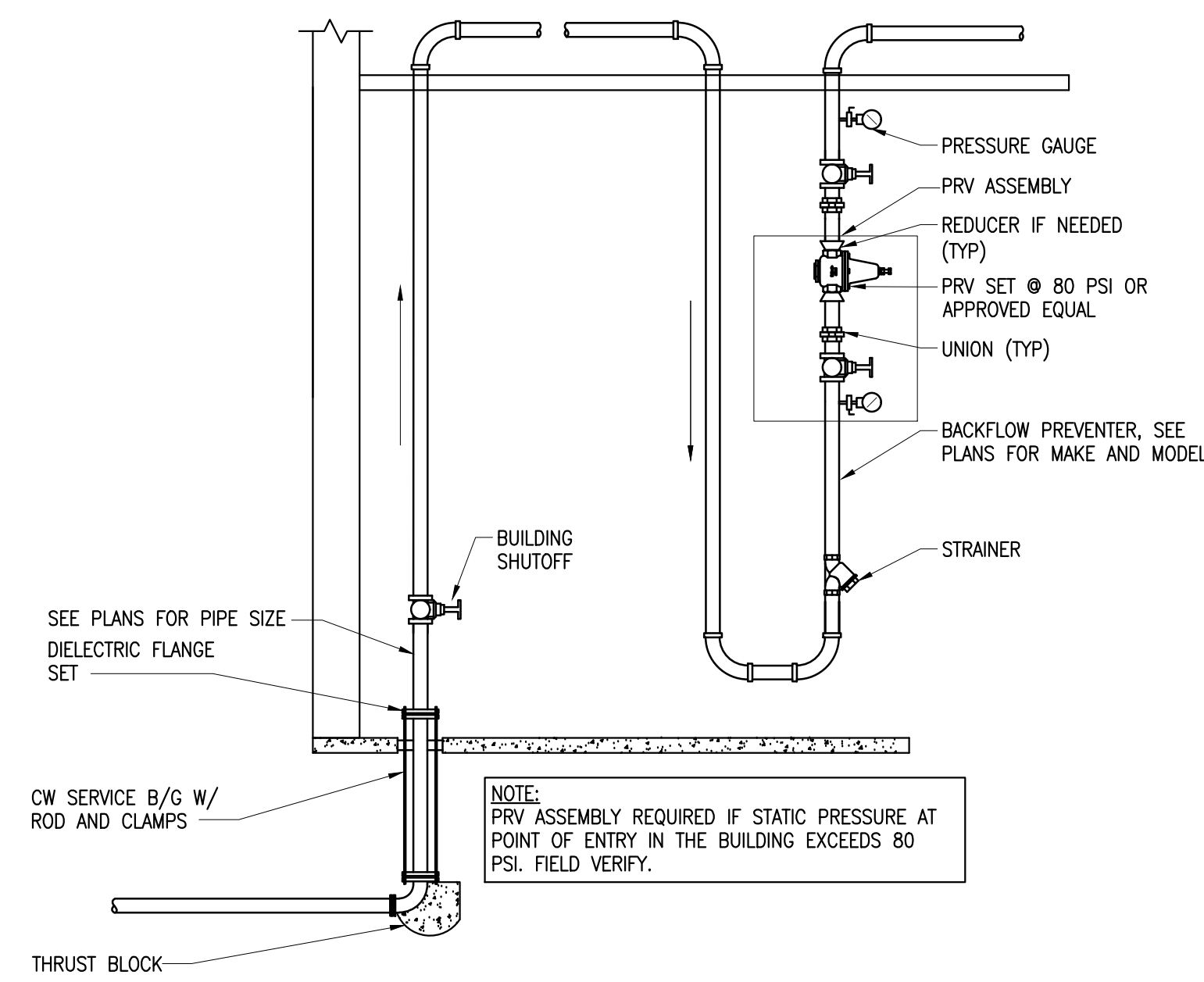
10 ICE MAKER BOX DETAIL  
NO SCALE



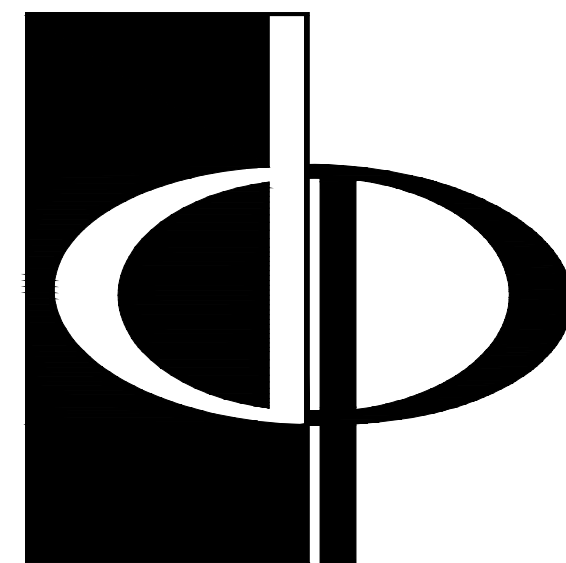
9 WALL CLEANOUT DETAIL  
NO SCALE



5 FLOOR/GRADE CLEANOUT DETAIL  
NO SCALE



1 DOMESTIC WATER SERVICE ENTRY (INTERIOR RISER ROOM)  
NO SCALE



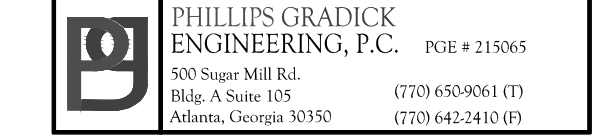
## THE PRESTON PARTNERSHIP, LLC

A MULTI-DISCIPLINARY DESIGN FIRM

SOUTH TERRACES  
115 PERIMETER CENTER PLACE, SUITE 950  
ATLANTA, GEORGIA 30346  
TELEPHONE: 770.396.7248  
FAX: 770.396.2945

WWW.THEPRESTONPARTNERSHIP.COM

CONSULTANT



PHILLIPS GRADICK ENGINEERING, P.C.  
5505 Peachtree Road, Suite 300  
Atlanta, Georgia 30340  
TEL: 770.462.2410  
FAX: 770.462.2410

SEAL



05/03/2017

PROJECT

## REVEL AT THE BALLPARK PHASE II

2885 CRESCENT PKWY  
SMYRNA, GA 30080

FOR



## ATLANTIC REALTY PARTNERS

3438 PEACHTREE ROAD  
SUITE 1425  
ATLANTA, GA 30326

ISSUES & REVISIONS

CONCEPTUAL DESIGN	8/21/15
50% PROGRESS SET	09/28/15
GMP PRICING SET	10/14/15
FOUNDATION PACKAGE	12/07/15
GMP PACKAGE	04/03/17
PERMIT SET	05/22/17

DATE 05/22/2017

JOB NUMBER 1493101

DRAWN BY WJM

CHECKED BY CDF

SHEET TITLE

DETAILS - PLUMBING

SHEET NUMBER

COMMENTS

P0-03

30X42 © 2017 The Preston Partnership, LLC