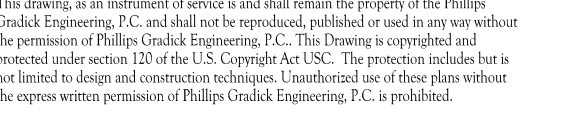


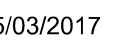


SOUTH TERRACES  
5 PERIMETER CENTER PLACE, SUITE 950  
ATLANTA, GEORGIA 30346  
TELEPHONE: 770 396 7248  
FAX: 770 396 2945

WWW.THEPRESTONPARTNERSHIP.COM  
CONSULTANT



\_\_\_\_\_EAL



PROJECT \_\_\_\_\_

## REVEL AT THE BALLPARK PHASE II

885 CRESCENT PKWY  
SMYRNA, GA 30080

OR \_\_\_\_\_



438 PEACHTREE ROAD  
SUITE 1425  
ATLANTA, GA 30326

SUES &  - REVISIONS \_\_\_\_\_ DATE \_\_\_\_\_

CONCEPTUAL DESIGN	8/21/15
50% PROGRESS SET	09/28/15
100% PRICING SET	10/14/15
FOUNDATION PACKAGE	12/07/15
100% PACKAGE	04/03/17
PERMIT SET	05/22/17

DATE 05/22/2017

08 NUMBER 1493101

DRAWN BY \_\_\_\_\_ WJM  
CHECKED BY \_\_\_\_\_

CHECKED BY \_\_\_\_\_ CDF

SHEET TITLE \_\_\_\_\_

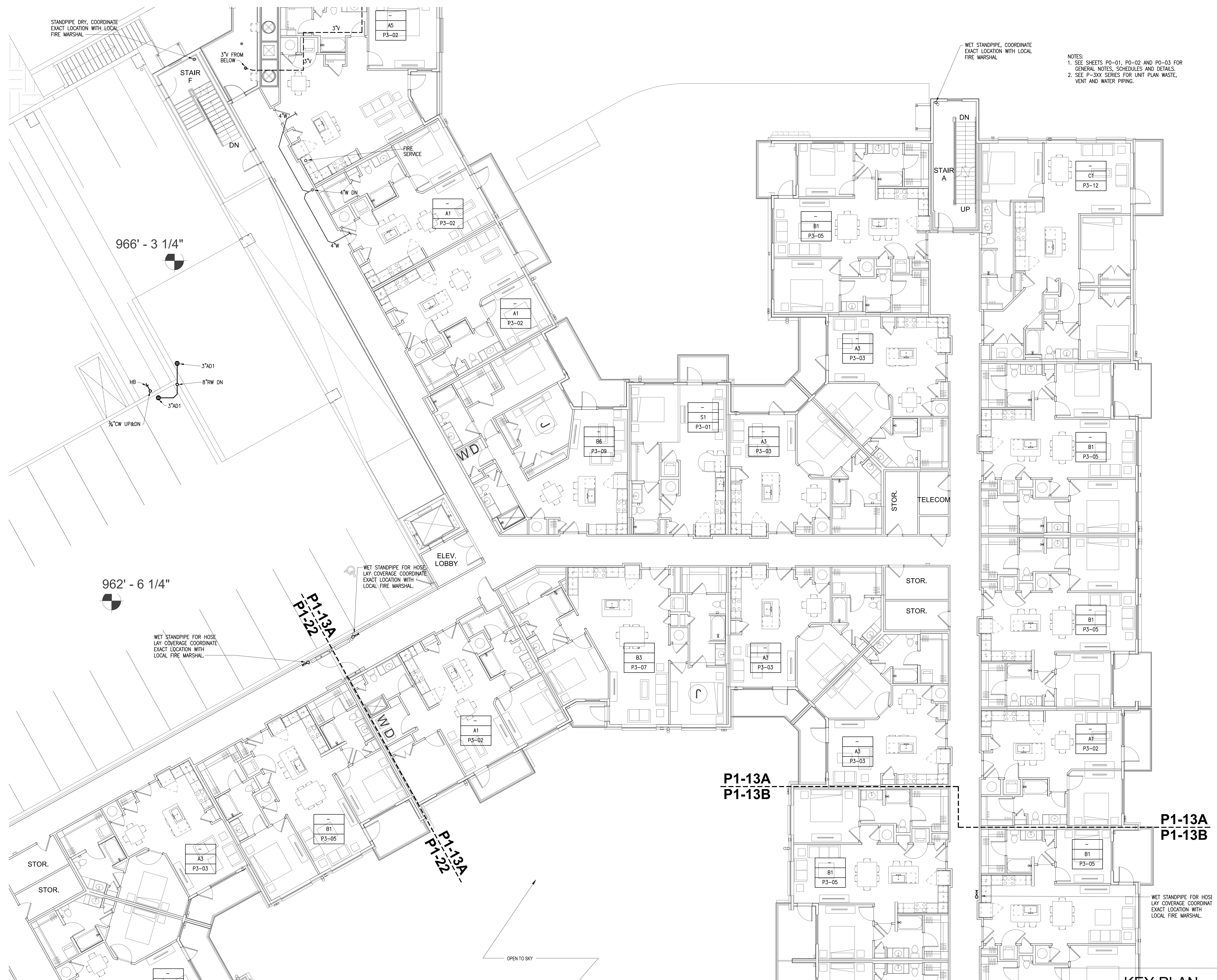
BUILDING 1000A PLAN -  
PROJECT LEVEL 3

SHEET NUMBER \_\_\_\_\_

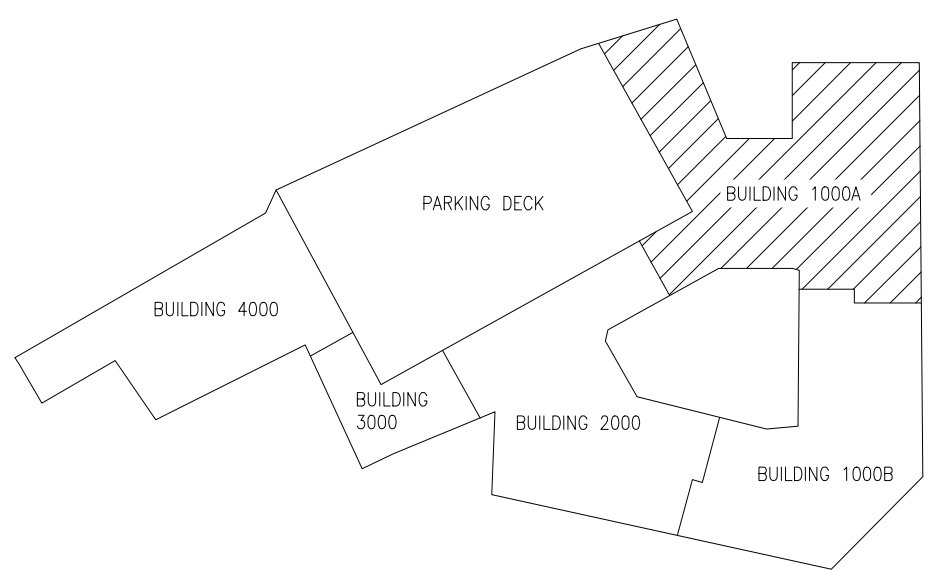
**P1-13A**

COMMENTS \_\_\_\_\_

© 2017 The Preston Partnership, LLC



## KEY PLAN



**1 BUILDING 1000A - PROJECT LEVEL 3**  
SCALE: 1/8" = 1'-0"

SCALE: 1/8" = 1'-0"