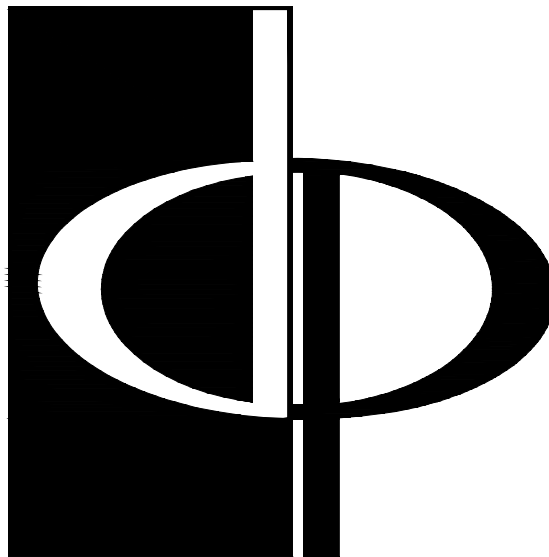


NOTES:  
1. SEE SHEETS P0-01, P0-02 AND P0-03 FOR GENERAL NOTES, SCHEDULES AND DETAILS.  
2. SEE P-3XX SERIES FOR UNIT PLAN WASTE, VENT AND WATER PIPING.



THE PRESTON  
PARTNERSHIP, LLC  
A MULTI-DISCIPLINARY DESIGN FIRM

SOUTH TERRACES  
115 PERIMETER CENTER PLACE, SUITE 950  
ATLANTA, GEORGIA 30346  
TELEPHONE: 770.396.7248  
FAX: 770.396.2945

WWW.THEPRESTONPARTNERSHIP.COM  
CONSULTANT



PHILLIPS GRADICK  
ENGINEERING, P.C. PCL# 215045  
500 Super Mile Rd.  
Bldg. A Suite 101  
Atlanta, Georgia 30326 (770) 640-4001 (F)  
(770) 640-2410 (O)

This drawing, or any information contained herein, is the property of Phillips Gradick Engineering, P.C. and shall not be reproduced, published or used in any way without the permission of Phillips Gradick Engineering, P.C. This drawing is prepared and printed under section 13 of the U.S. Copyright Act 1976. The permission is granted but is not limited to design and construction purposes. Unauthorized use of this plan without the express written permission of Phillips Gradick Engineering, P.C. is prohibited.

SEAL



PROJECT 05/03/2017

REVEL AT THE  
BALLPARK  
PHASE II  
2885 CRESCENT PKWY  
SMYRNA, GA 30080

FOR



ATLANTIC REALTY  
PARTNERS

3438 PEACHTREE ROAD  
SUITE 1425  
ATLANTA, GA 30326

ISSUES & REVISIONS DATE

CONCEPTUAL DESIGN	8/21/15
50% PROGRESS SET	09/28/15
GMP PRICING SET	10/14/15
FOUNDATION PACKAGE	12/07/15
GMP PACKAGE	04/03/17
PERMIT SET	05/22/17

DATE 05/22/2017

JOB NUMBER 1493101

DRAWN BY WJM

CHECKED BY CDF

SHEET TITLE

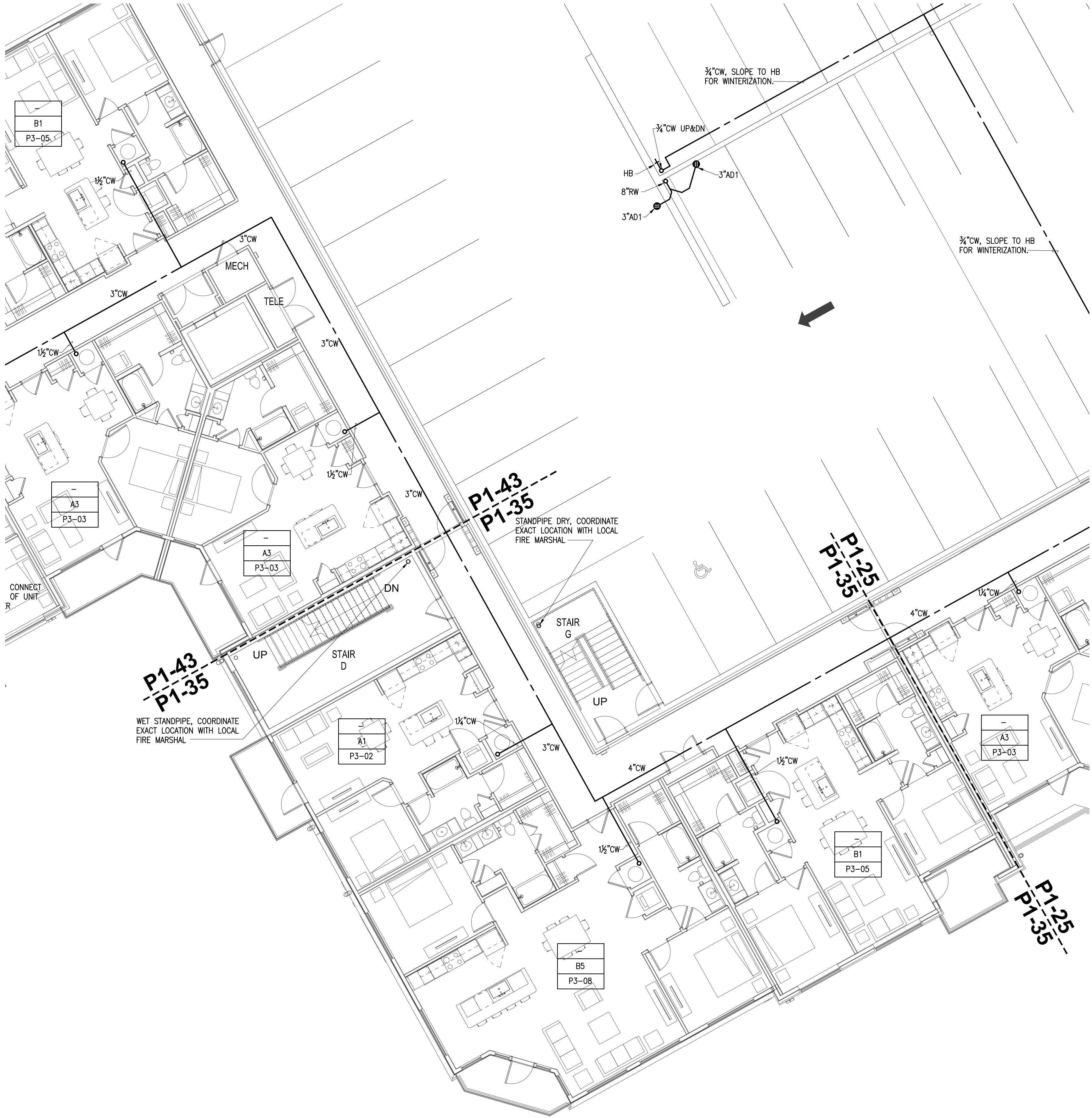
BUILDING 3000 PLAN -  
PROJECT LEVEL 6

SHEET NUMBER

P1-35

COMMENTS

30X42 © 2017 The Preston Partnership, LLC



1 BUILDING 3000 PROJECT LEVEL 6  
SCALE: 1/8" = 1'-0"

KEY PLAN

