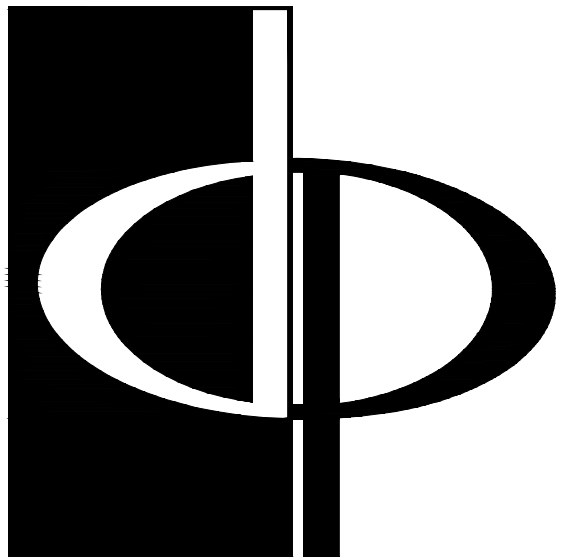
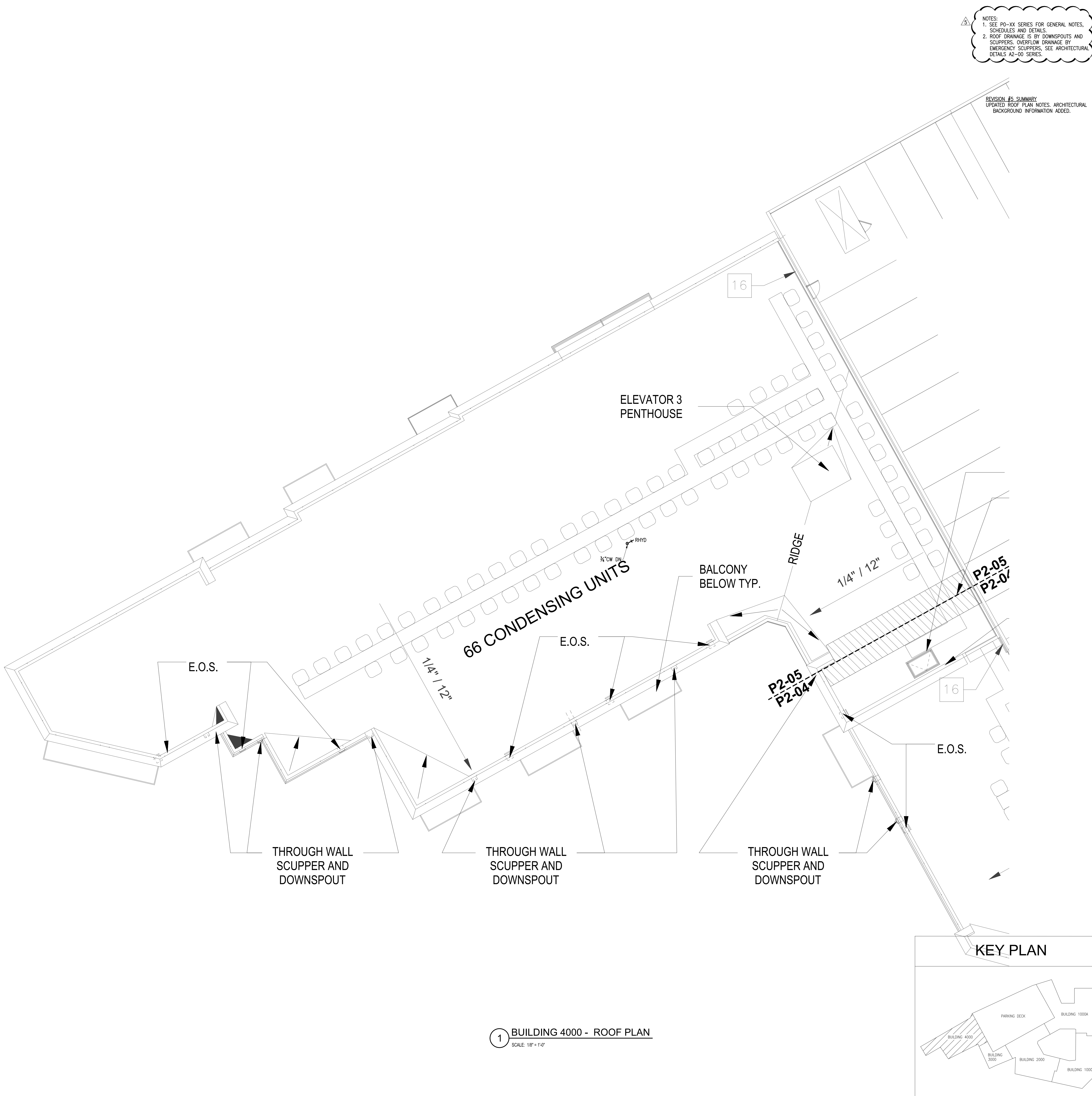


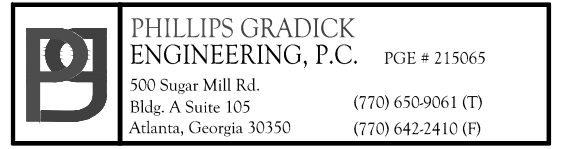
11/02/2016 4:50:43 PM V:\015085-Cone 15 Phase II\MECH\2014\UNSAT\ARCH\015-1-01483101-Cone 15 R.P.L-Consultant



THE PRESTON
PARTNERSHIP, LLC
A MULTI-DISCIPLINARY DESIGN FIRM

SOUTH TERRACES
115 PERIMETER CENTER PLACE, SUITE 950
ATLANTA, GEORGIA 30346
TELEPHONE: 770.396.7248
FAX: 770.396.2945

WWW.THEPRESTONPARTNERSHIP.COM
CONSULTANT



PHILLIPS GRADICK
ENGINEERING, P.C.
500 Super Mile Rd.
Atlanta, Georgia 30328
(770) 640-4000 (TX)
(770) 640-2400 (FL)

SEAL



05/03/2017
PROJECT

REVEL AT THE
BALLPARK
PHASE II
2885 CRESCENT PKWY
SMYRNA, GA 30080

FOR



ATLANTIC REALTY
PARTNERS

3438 PEACHTREE ROAD
SUITE 1425
ATLANTA, GA 30326

ISSUES & REVISIONS

ISSUES & REVISIONS	DATE
CONCEPTUAL DESIGN	8/21/15
50% PROGRESS SET	09/28/15
60% PROGRESS SET	10/14/15
FOUNDATION PACKAGE	12/07/15
60% PACKAGE	04/03/17
PERMIT SET	05/22/17
PERMIT REVISIONS	10/02/2017

DATE

JOB NUMBER

DRAWN BY

CHECKED BY

SHEET TITLE

ROOF PLAN - PLUMBING

SHEET NUMBER

COMMENTS

30X42 © 2017 The Preston Partnership, LLC