

**THE PRESTON
PARTNERSHIP, LLC**
A MULTI-DISCIPLINARY DESIGN FIRM

SOUTH TERRACES
115 PERIMETER CENTER PLACE, SUITE 950
ATLANTA, GEORGIA 30346
TELEPHONE: 770.396.7248
FAX: 770.396.2945

WWW.THEPRESTONPARTNERSHIP.COM
CONSULTANT

**PHILLIPS GRADICK
ENGINEERING, P.C.** PCL# 215045
550 Super Mile Rd.
Atlanta, Georgia 30328
(770) 640-4001 (TX)
(770) 640-2410 (TX)

In preparing, reviewing, and issuing these documents, we warrant that they comply with the requirements of the Georgia Professional Engineers Act, and that they are not prepared, published, or used in any way without the written consent of Phillips Gradick Engineering, P.C. This document is prepared and printed under contract 120 of the U.S. Copyright Act 1976. The permission to publish is not limited to design and construction purposes. Unauthorized use of these plans without the express written permission of Phillips Gradick Engineering, P.C., is prohibited.

SEAL



05/03/2017

PROJECT

**REVEL AT THE
BALLPARK
PHASE II**
2885 CRESCENT PKWY
SMYRNA, GA 30080

FOR



**ATLANTIC REALTY
PARTNERS**

3438 PEACHTREE ROAD
SUITE 1425
ATLANTA, GA 30326

ISSUES & REVISIONS

ISSUES & REVISIONS	DATE
CONCEPTUAL DESIGN	8/21/15
SD PROGRESS SET	09/28/15
GMP PRICING SET	10/14/15
FOUNDATION PACKAGE	12/07/15
GMP PACKAGE	04/03/17
PERMIT SET	05/22/17

DATE

JOB NUMBER

DRAWN BY

CHECKED BY

SHEET TITLE

UNIT PLANS -
PLUMBING

SHEET NUMBER

P3-03

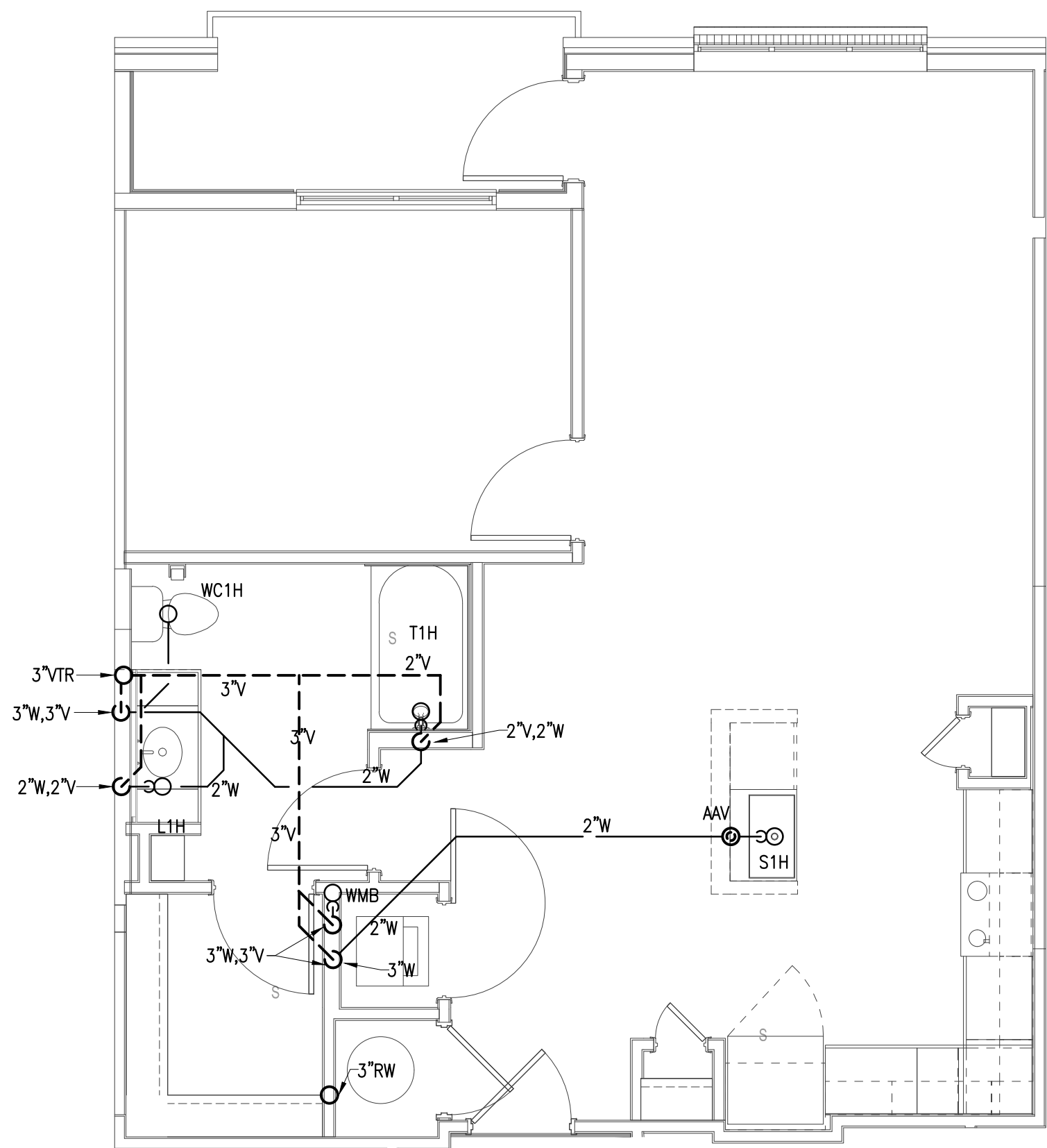
COMMENTS

30X42

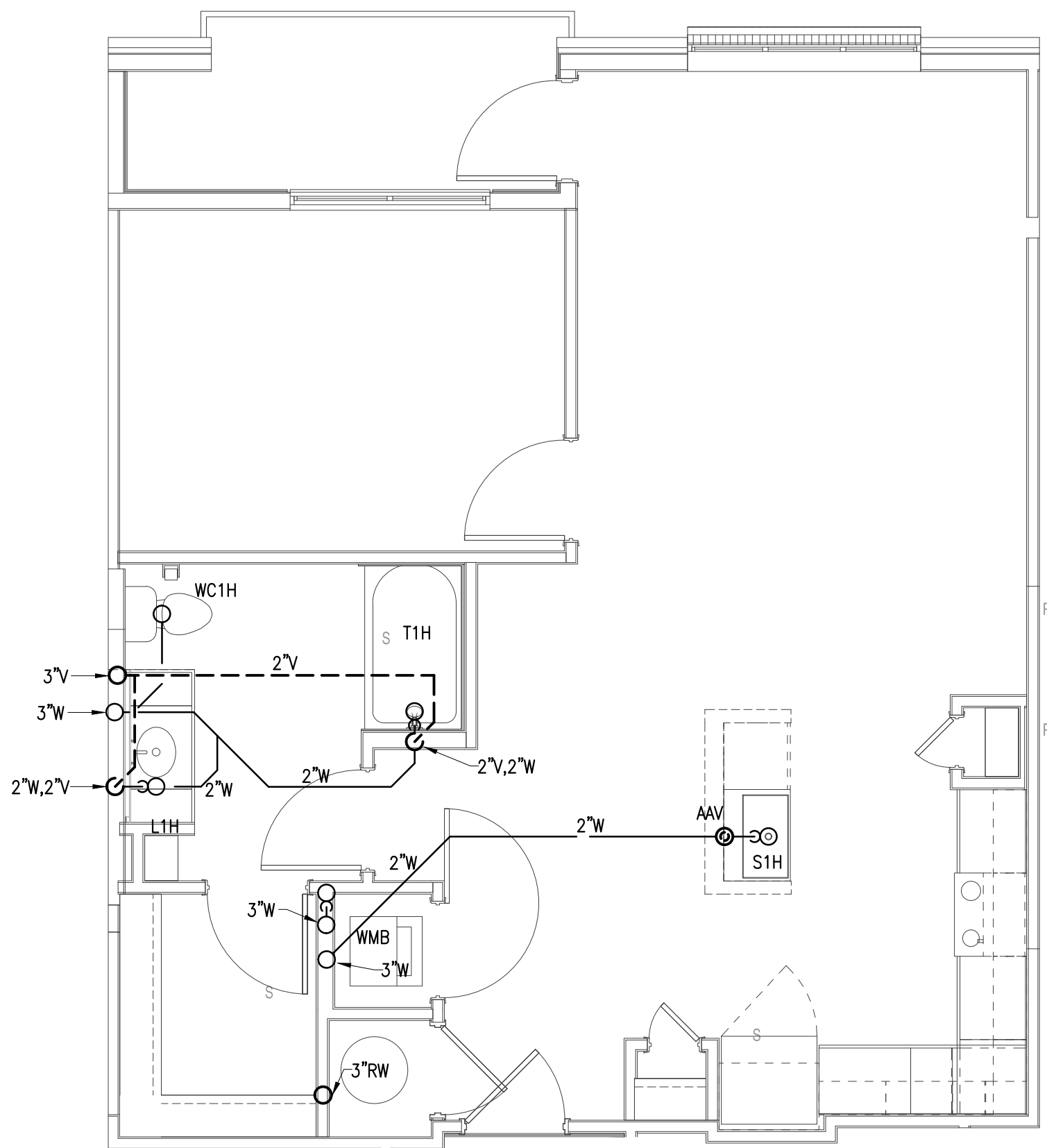
© 2017 The Preston Partnership, LLC

NOTES:

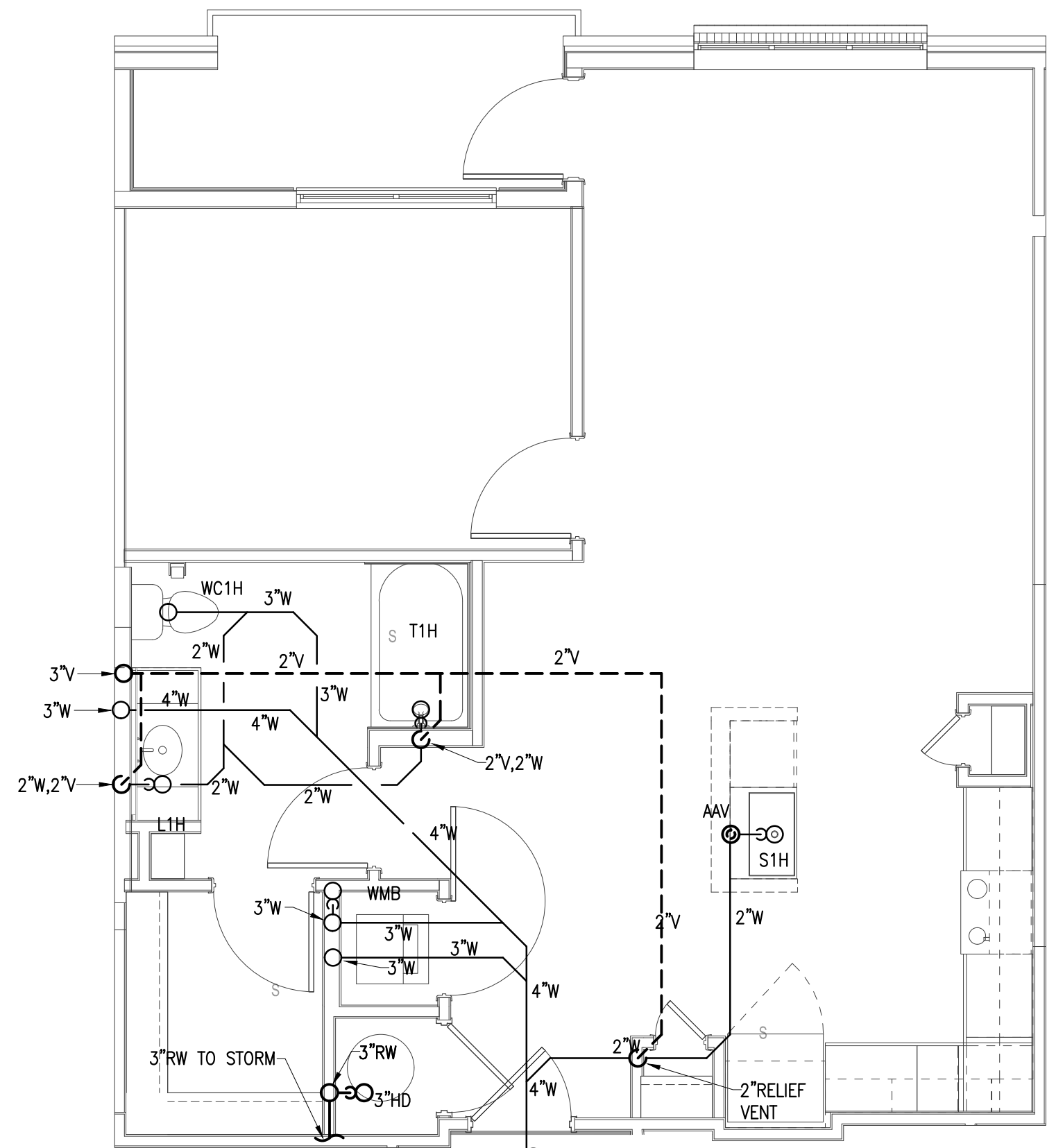
- SEE SHEETS P0-01 P0-02 & P0-03 FOR GENERAL NOTES, SCHEDULE AND DETAILS.
- SEE P1-XX SERIES FOR FLOOR PLANS, WASTE, VENT AND WATER PIPING.
- ISLAND SINKS WITH AIR ADMITTANCE VALVES SHALL HAVE A RELIEF VENT THREE STORIES FROM THE TOP FLOOR AND BELOW.



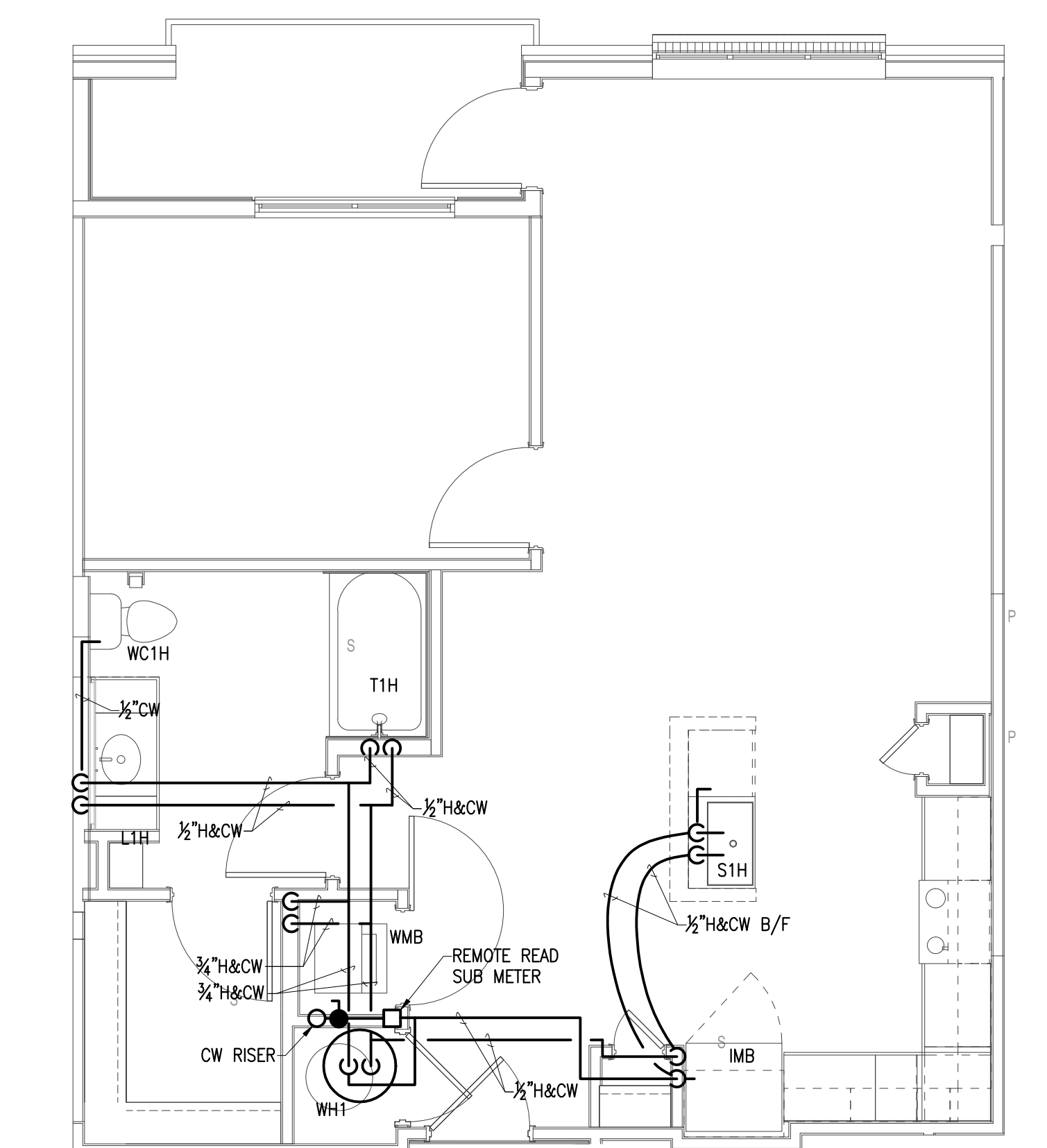
4 UNIT A2-HC TOP FLOOR PLAN - S,W&V
SCALE: 1/4" = 1'-0"



3 UNIT A2-HC TYPICAL FLOOR PLAN - S,W&V
SCALE: 1/4" = 1'-0"



2 UNIT A2-HC BOTTOM FLOOR PLAN - S,W&V
SCALE: 1/4" = 1'-0"



1 UNIT A2-HC TYPICAL WATER
SCALE: 1/4" = 1'-0"

KEY PLAN

