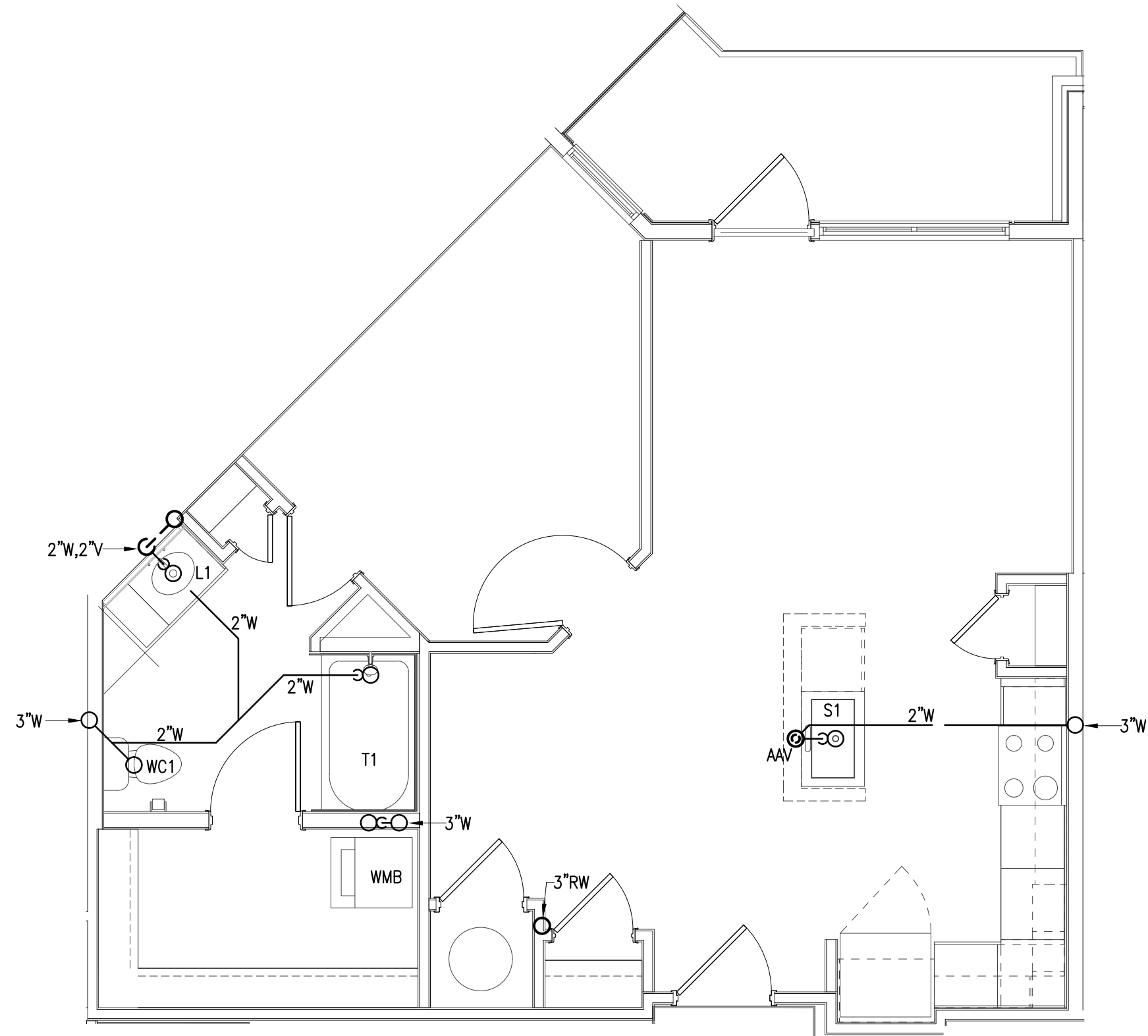
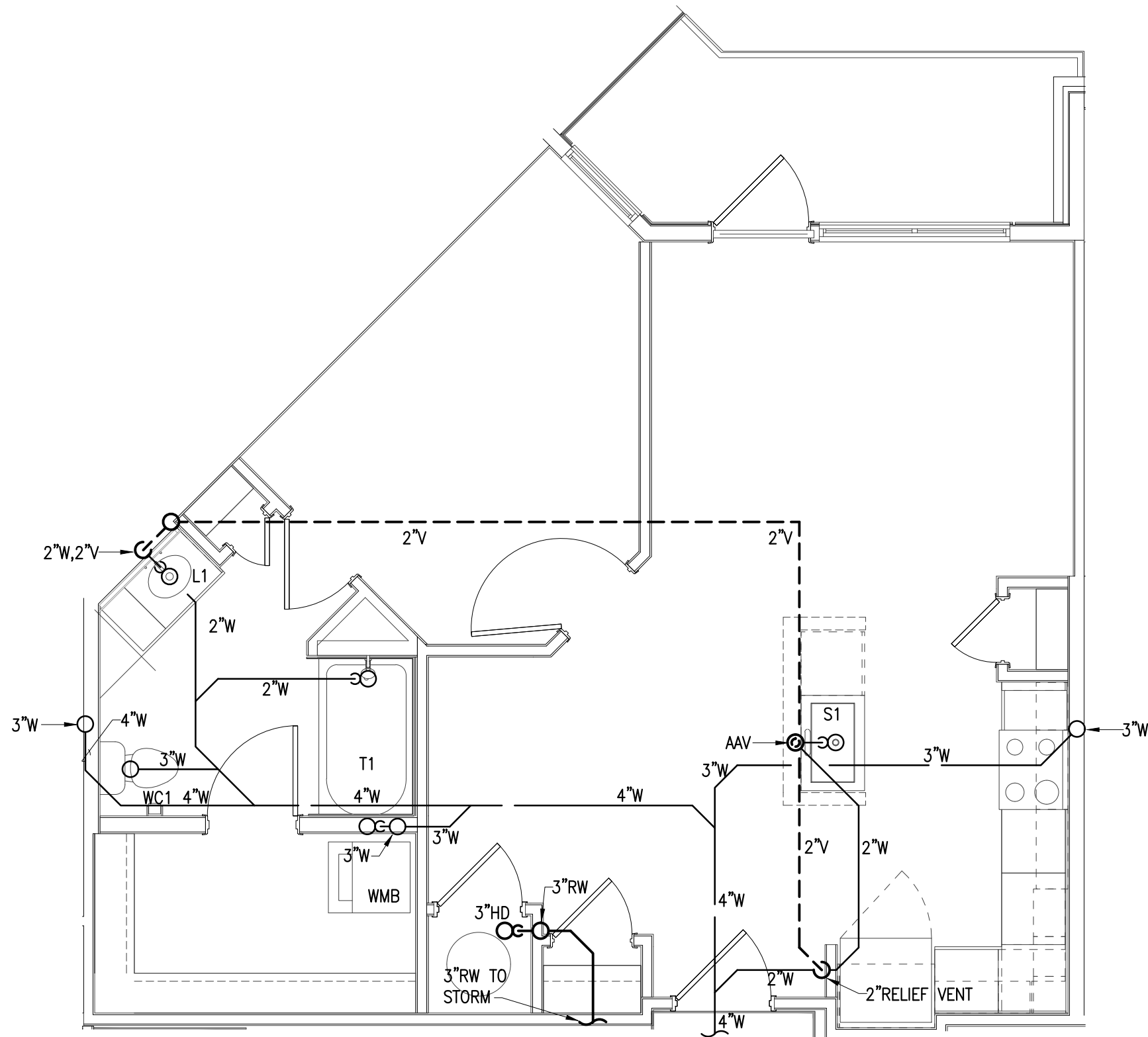


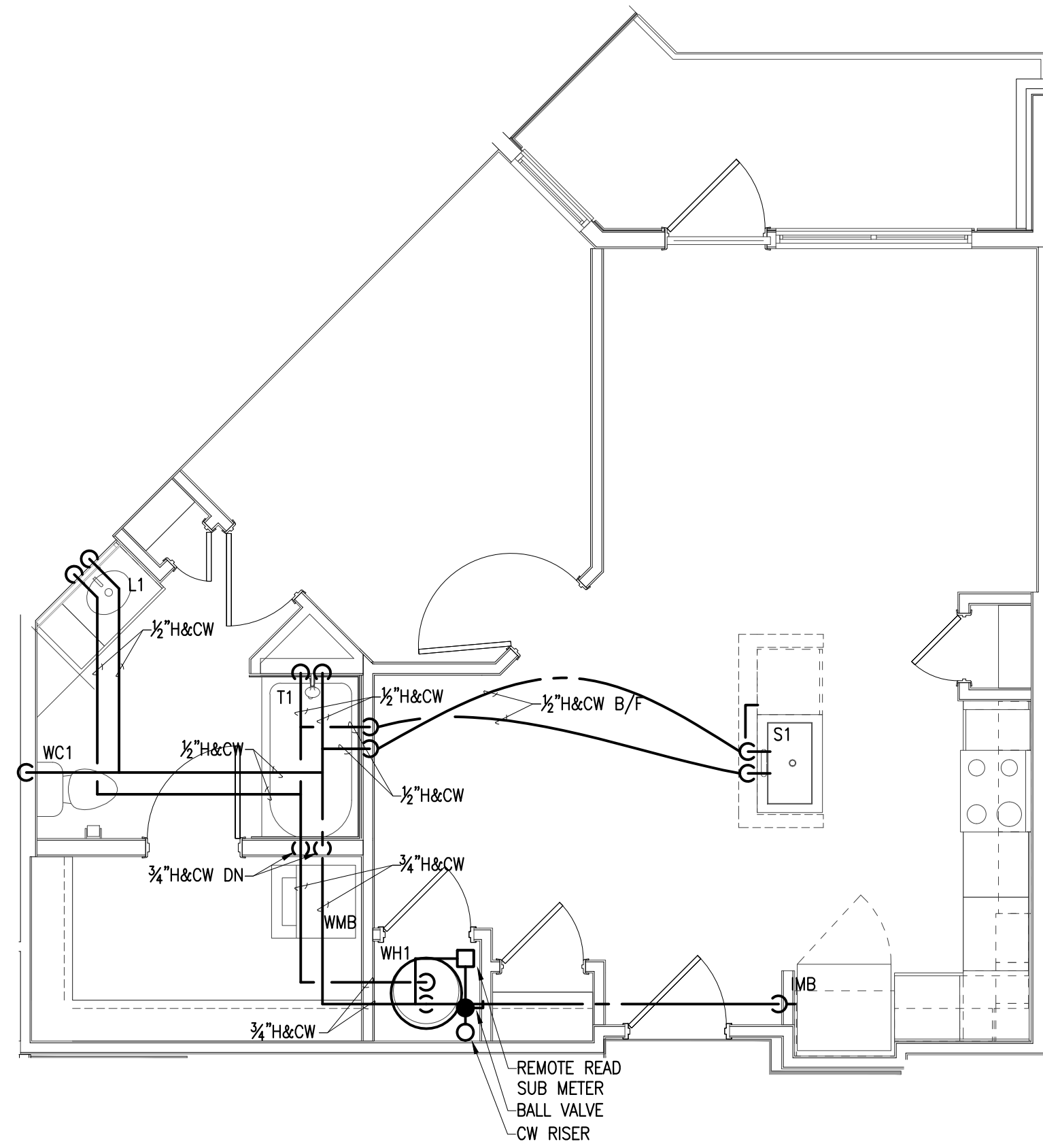
4 UNIT A3 TOP FLOOR PLAN - S, W&V
SCALE: 1/4" = 1'-0"



3 UNIT A3 TYPICAL FLOOR PLAN - S, W&V
SCALE: 1/4" = 1'-0"

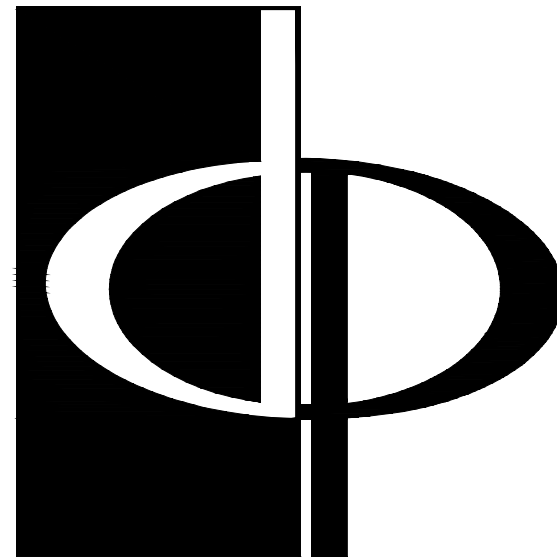


2 UNIT A3 BOTTOM FLOOR PLAN - S, W&V
SCALE: 1/4" = 1'-0"



1 UNIT A3 TYPICAL WATER
SCALE: 1/4" = 1'-0"

- NOTES:
- SEE SHEETS PO-01, PO-02 & PO-03 FOR GENERAL NOTES, SCHEDULE AND DETAILS.
 - SEE P1-XX SERIES FOR FLOOR PLANS.
 - WASTE, VENT AND WATER PIPING.
 - ISLAND SINKS WITH AIR ADMITTANCE VALVES SHALL HAVE A RELIEF VENT THREE STORIES FROM THE TOP FLOOR AND BELOW.



**THE PRESTON
PARTNERSHIP, LLC**
A MULTI-DISCIPLINARY DESIGN FIRM

SOUTH TERRACES
115 PERIMETER CENTER PLACE, SUITE 950
ATLANTA, GEORGIA 30346
TELEPHONE: 770.396.7248
FAX: 770.396.2945

WWW.THEPRESTONPARTNERSHIP.COM
CONSULTANT



SEAL



PROJECT 05/03/2017

**REVEL AT THE
BALLPARK
PHASE II**
2885 CRESCENT PKWY
SMYRNA, GA 30080

FOR



**ATLANTIC REALTY
PARTNERS**

3438 PEACHTREE ROAD
SUITE 1425
ATLANTA, GA 30326

ISSUES & REVISIONS

ISSUES & REVISIONS	DATE
CONCEPTUAL DESIGN	8/21/15
50% PROGRESS SET	09/28/15
GMP PRICING SET	10/14/15
FOUNDATION PACKAGE	12/07/15
GMP PACKAGE	04/03/17
PERMIT SET	05/22/17

DATE 05/22/2017

JOB NUMBER 1493101

DRAWN BY WJMJ

CHECKED BY CDF

SHEET TITLE

UNIT PLANS -
PLUMBING

SHEET NUMBER

P3-04

COMMENTS