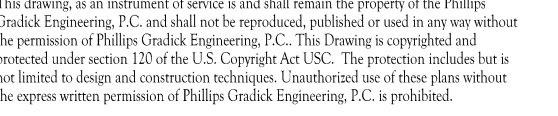


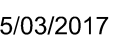


SOUTH TERRACES  
5 PERIMETER CENTER PLACE, SUITE 950  
ATLANTA, GEORGIA 30346  
TELEPHONE: 770 396 7248  
FAX: 770 396 2945

WWW.THEPRESTONPARTNERSHIP.COM  
CONSULTANT



---



PROJECT \_\_\_\_\_

## REVEL AT THE BALLPARK PHASE II

885 CRESCENT PKWY  
SMYRNA, GA 30080

OR \_\_\_\_\_



438 PEACHTREE ROAD  
SUITE 1425  
ATLANTA, GA 30326

SUES &  - REVISIONS \_\_\_\_\_ DATE \_\_\_\_\_

CONCEPTUAL DESIGN	8/21/15
SD PROGRESS SET	09/28/15
SMP PRICING SET	10/14/15
FOUNDATION PACKAGE	12/07/15
SMP PACKAGE	04/03/17
PERMIT SET	05/22/17

05/22/2017

1493101

RAWN BY \_\_\_\_\_ WJM

CHECKED BY \_\_\_\_\_ CDF

SHEET TITLE \_\_\_\_\_

UNIT PLANS

UNIT PLANS -  
PLUMBING

SHEET NUMBER \_\_\_\_\_

**P3-09**

COMMENTS \_\_\_\_\_

[illegible]

- NOTES:
1. SEE SHEETS P0-01 P0-02 & P0-03 FOR GENERAL NOTES, SCHEDULE AND DETAILS.
  2. SEE P1-XX SERIES FOR FLOOR PLANS WASTE, VENT AND WATER PIPING.
  3. ISLAND SINKS WITH AIR ADMITTANCE VALVES SHALL HAVE A RELIEF VENT THREE STORIES FROM THE TOP FLOOR AND BELOW.

