

**THE PRESTON
PARTNERSHIP, LLC**
A MULTI-DISCIPLINARY DESIGN FIRM

SOUTH TERRACES
115 PERIMETER CENTER PLACE, SUITE 950
ATLANTA, GEORGIA 30346
TELEPHONE: 770.396.7248
FAX: 770.396.2945

WWW.THEPRESTONPARTNERSHIP.COM
CONSULTANT



PHILLIP GRADICK
ENGINEERING, P.C. P.E.# 215065
550 Super Mile Rd.
Bldg. A, Suite 101 (770) 660-0001 (T)
Atlanta, Georgia 30328 (770) 660-2410 (F)

In bearing, no alteration or modification shall be made to the original design or drawings of this firm, and shall remain the property of the firm. Gradick Engineering, P.C., and shall not be reproduced, published or used in any way without the permission of Phillip Gradick Engineering, P.C. The drawings are prepared and printed under section 13.0 of the U.S. Copyright Act 1976. The permission is granted to use the drawings for design and construction purposes. Unauthorized use of these drawings without the express written permission of Phillip Gradick Engineering, P.C. is prohibited.

SEAL



05/03/2017
PROJECT

**REVEL AT THE
BALLPARK
PHASE II**
2885 CRESCENT PKWY
SMYRNA, GA 30080

FOR



**ATLANTIC REALTY
PARTNERS**

3438 PEACHTREE ROAD
SUITE 1425
ATLANTA, GA 30326

ISSUES & REVISIONS DATE

CONCEPTUAL DESIGN	8/21/15
SD PROGRESS SET	09/28/15
GMP PRICING SET	10/14/15
FOUNDATION PACKAGE	12/07/15
GMP PACKAGE	04/03/17
PERMIT SET	05/22/17

DATE 05/22/2017

JOB NUMBER 1493101

DRAWN BY WJMJ

CHECKED BY CDF

SHEET TITLE

UNIT PLANS -
PLUMBING

SHEET NUMBER

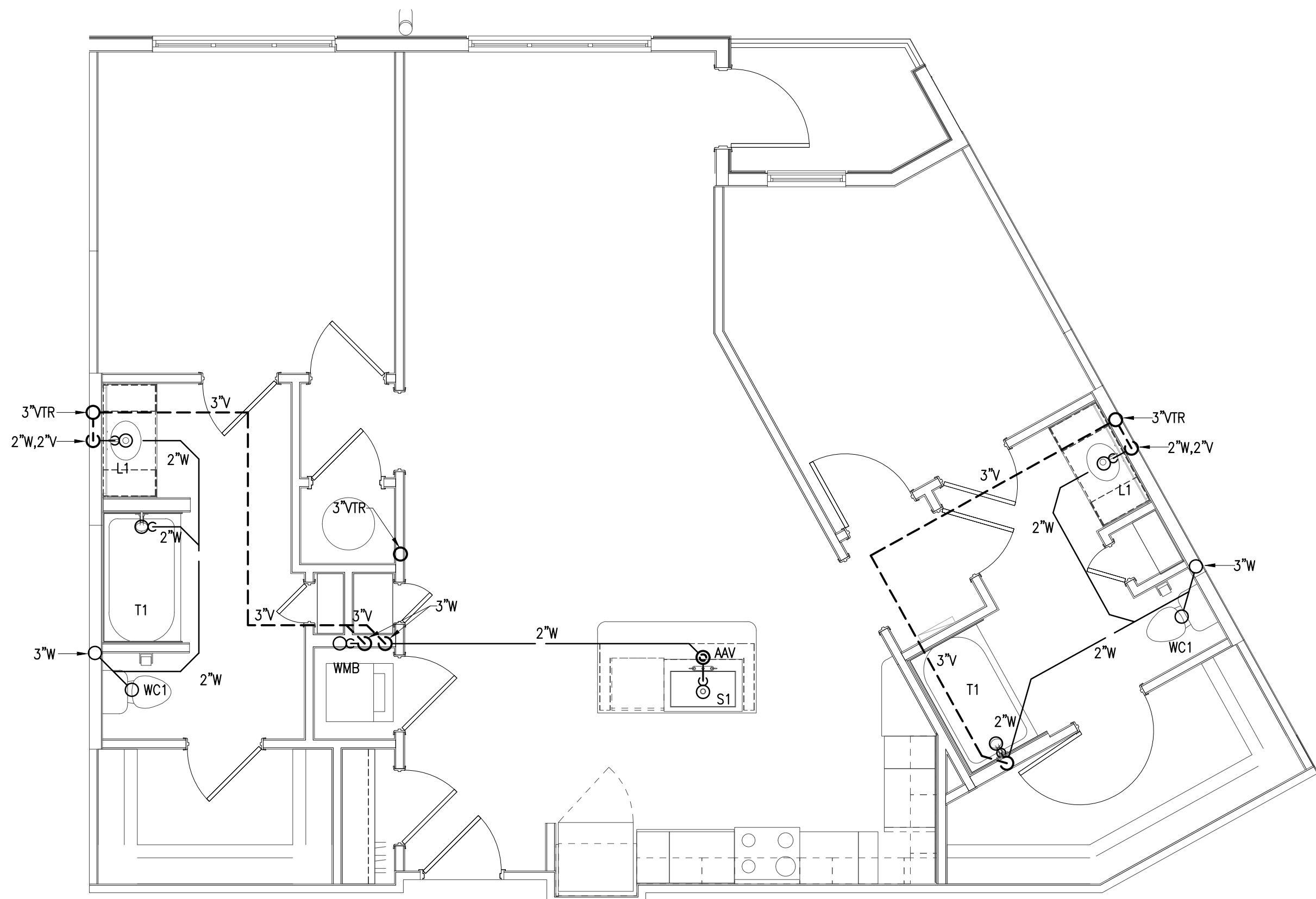
P3-13

COMMENTS

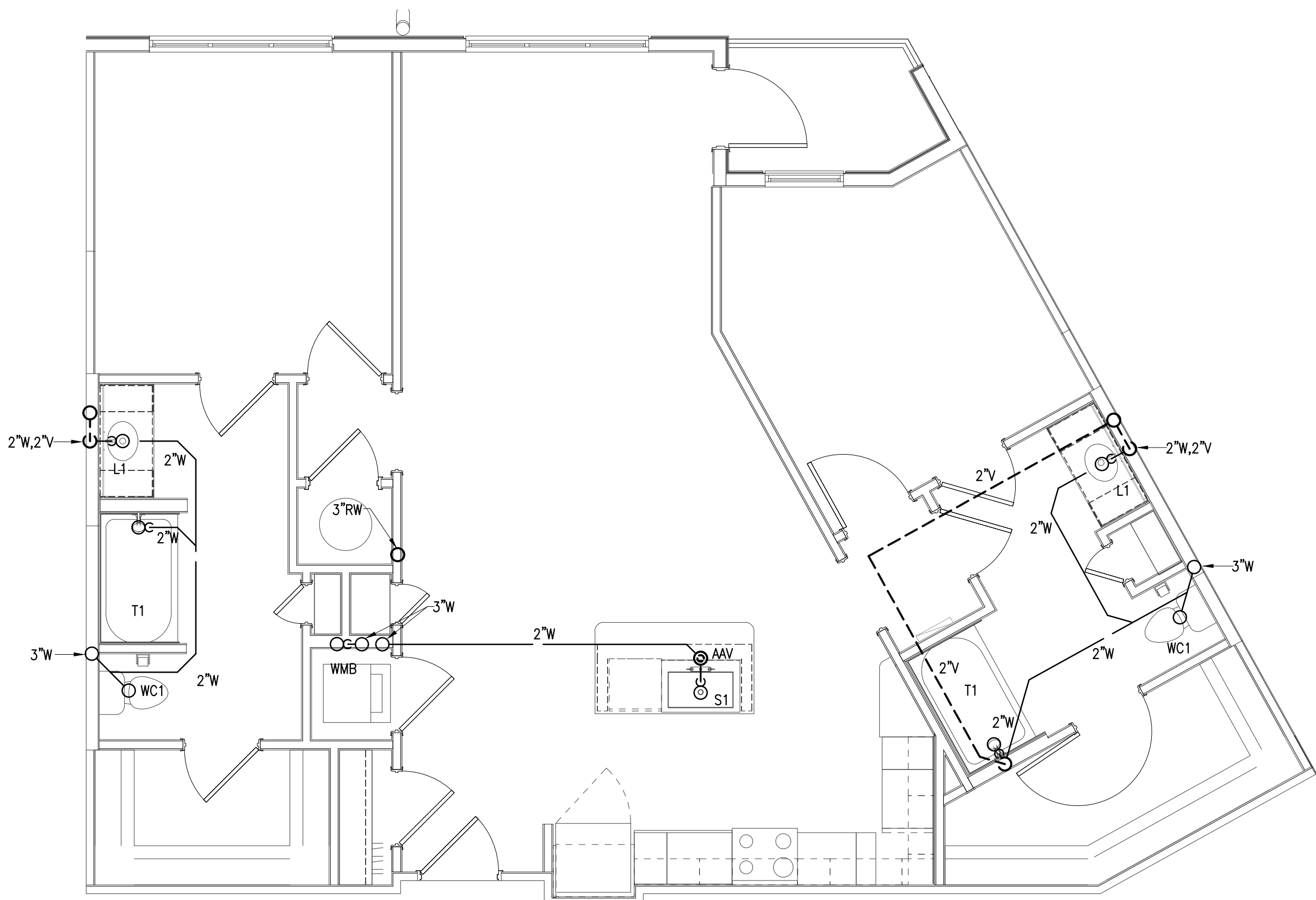
30X42 © 2017 The Preston Partnership, LLC

NOTES:

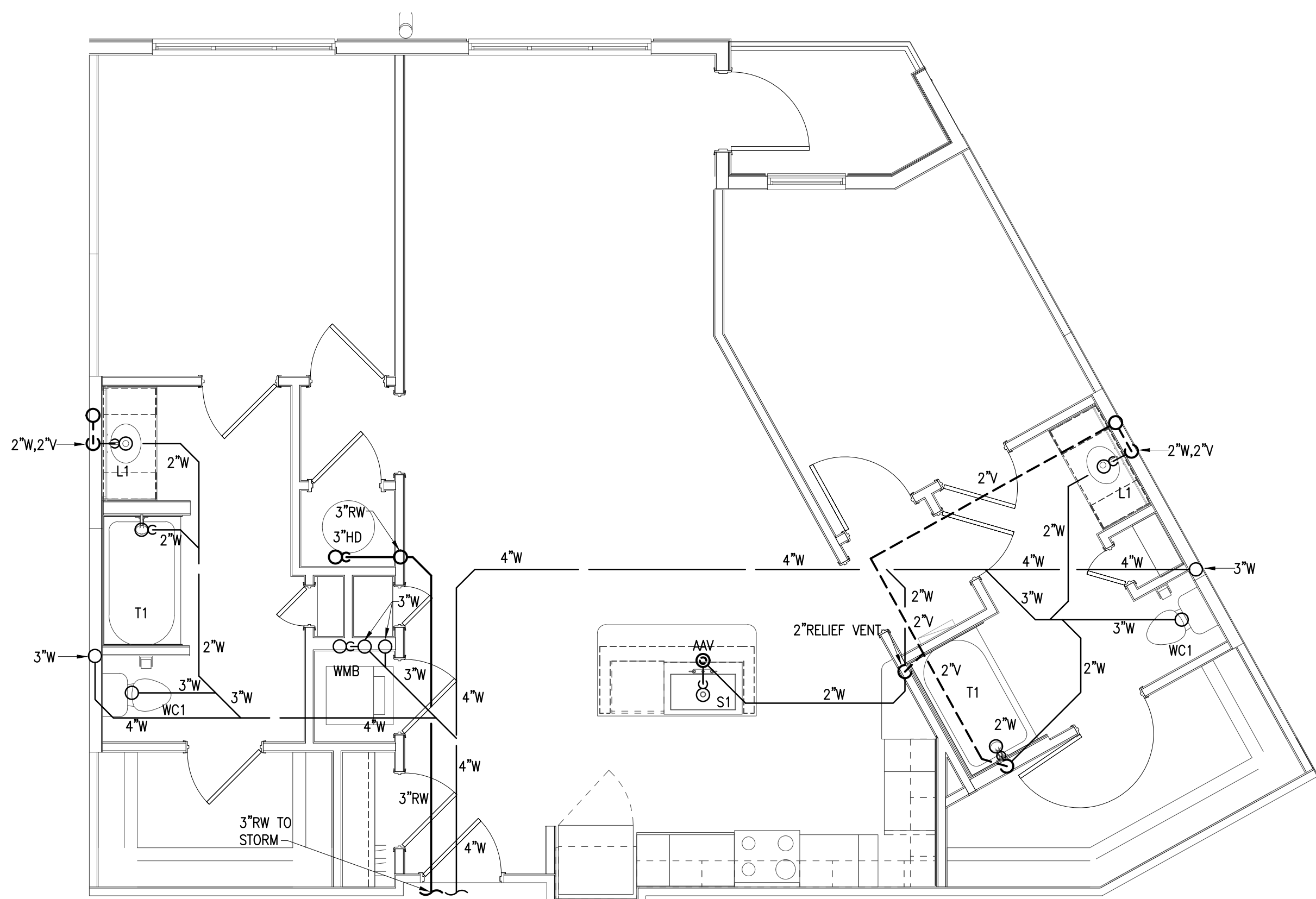
1. SEE SHEETS P0-01, P0-02 & P0-03 FOR GENERAL NOTES, SCHEDULE AND DETAILS.
2. SEE P1-XX SERIES FOR FLOOR PLANS WASTE, VENT AND WATER PIPING.
3. ISLAND SINKS WITH AIR ADMITTANCE VALVES SHALL HAVE A RELIEF VENT THREE STORIES FROM THE TOP FLOOR AND BELOW.



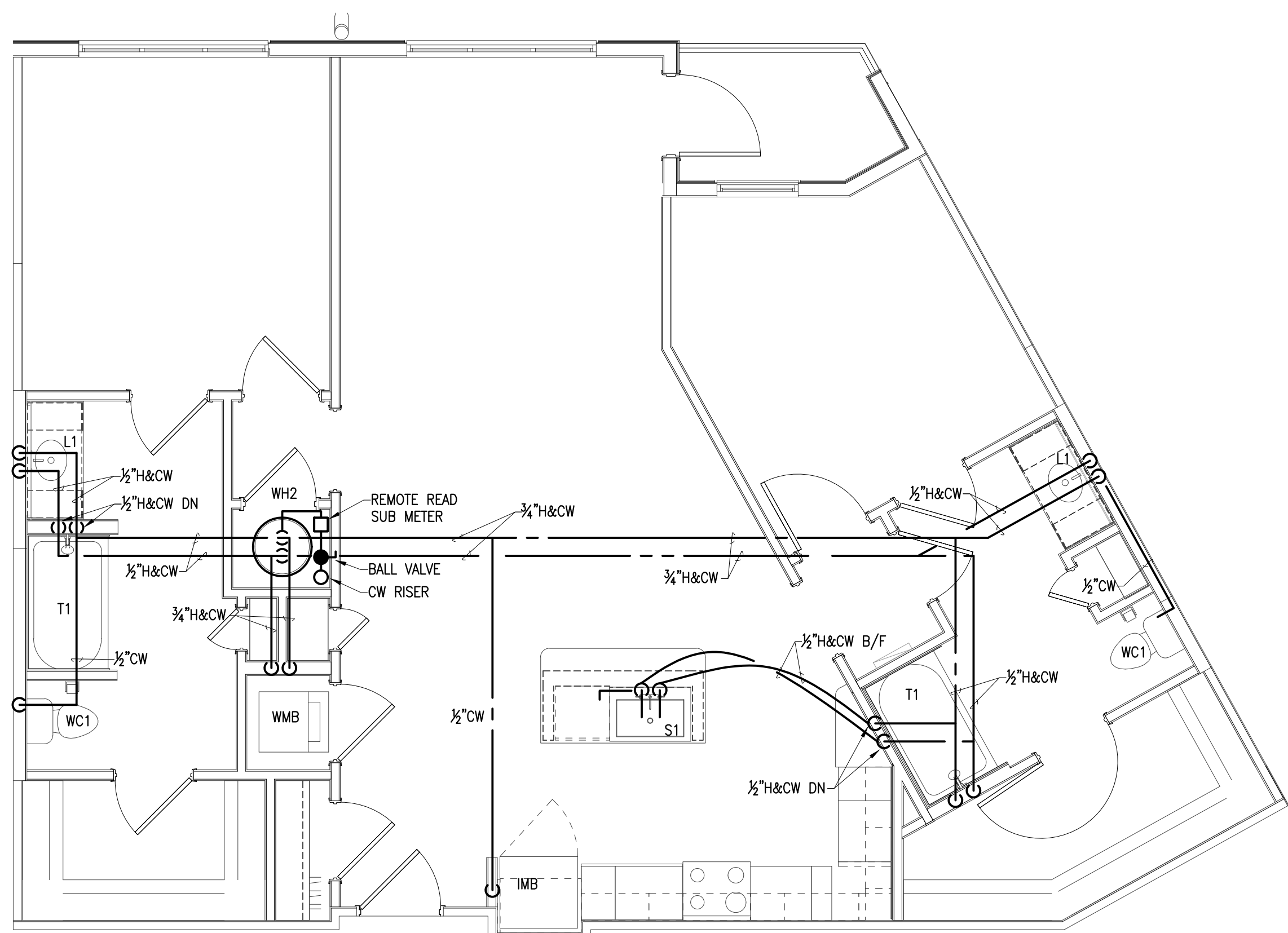
4 UNIT B3 TOP FLOOR PLAN - S,W&V
SCALE: 1/4" = 1'-0"



3 UNIT B3 TYPICAL FLOOR PLAN - S,W&V
SCALE: 1/4" = 1'-0"



2 UNIT B3 BOTTOM FLOOR PLAN - S,W&V
SCALE: 1/4" = 1'-0"



1 UNIT B3 TYPICAL WATER
SCALE: 1/4" = 1'-0"