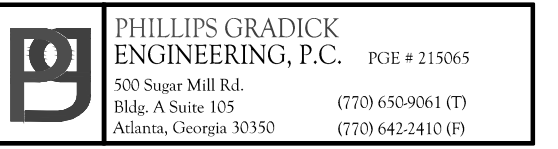
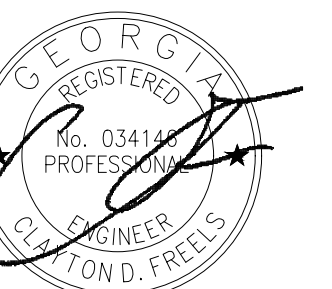




SOUTH TERRACES
5 PERIMETER CENTER PLACE, SUITE 950
ATLANTA, GEORGIA 30346
TELEPHONE: 770 396 7248
FAX: 770 396 2945

WWW.THEPRESTONPARTNERSHIP.COM
CONSULTANT





03/2017

PROJECT _____

REVEL AT THE BALLPARK PHASE II

885 CRESCENT PKWY
SMYRNA, GA 30080

OR _____



ATLANTIC REALTY
PARTNERS

438 PEACHTREE ROAD
SUITE 1425
ATLANTA, GA 30326

SUES & \triangle - REVISIONS _____ DATE _____

CONCEPTUAL DESIGN	8/21/15
50% PROGRESS SET	09/28/15
100% PRICING SET	10/14/15
FOUNDATION PACKAGE	12/07/15
100% PACKAGE	04/03/17
PERMIT SET	05/22/17

05/23/2017

08 NUMBER _____ 1100101

DRAWN BY _____ 1493101
1991121

CHECKED BY _____

SHEET TITLE _____

UNIT PLANS -
PLUMBING

SHEET NUMBER _____

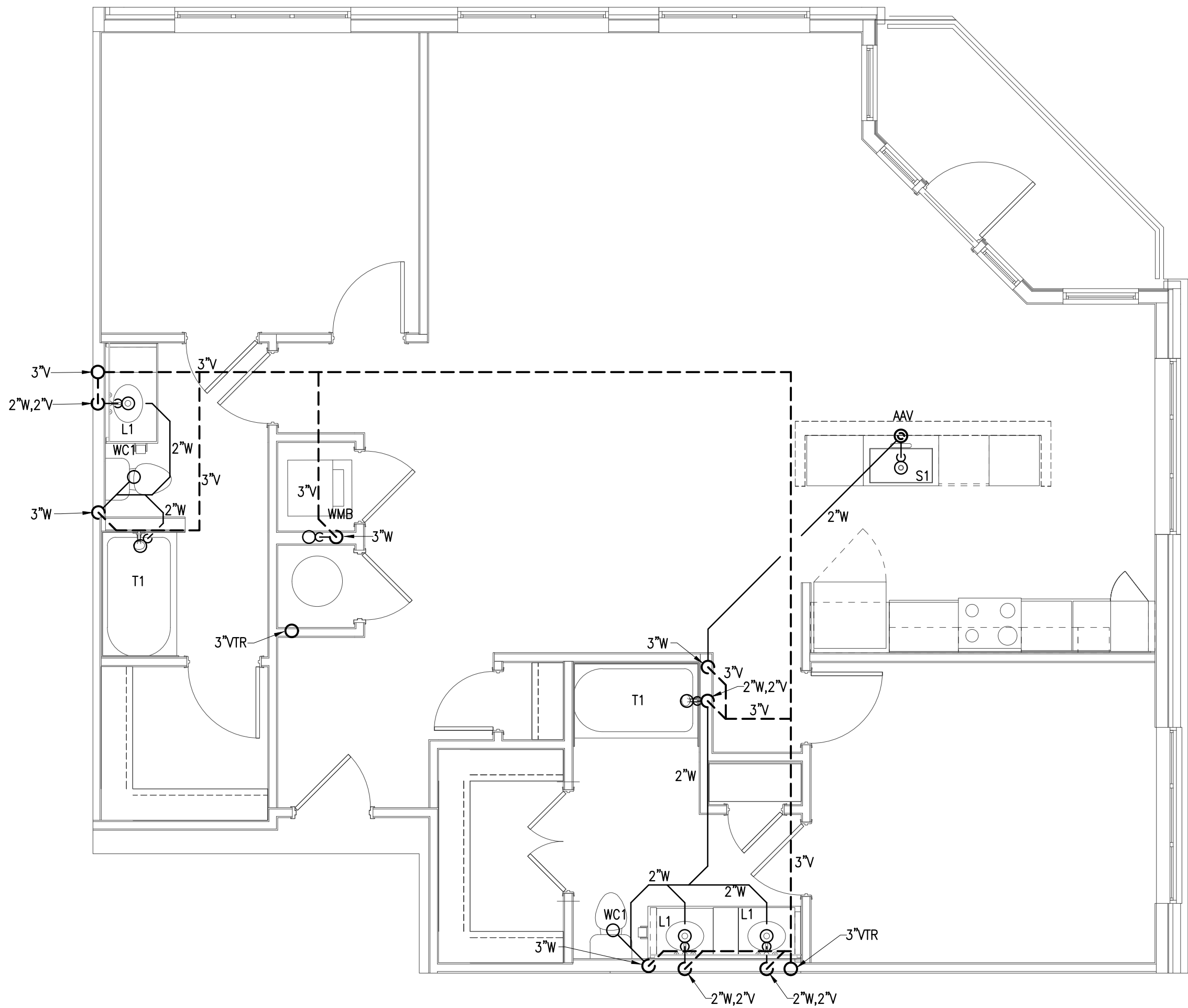
P3-14

COMMENTS

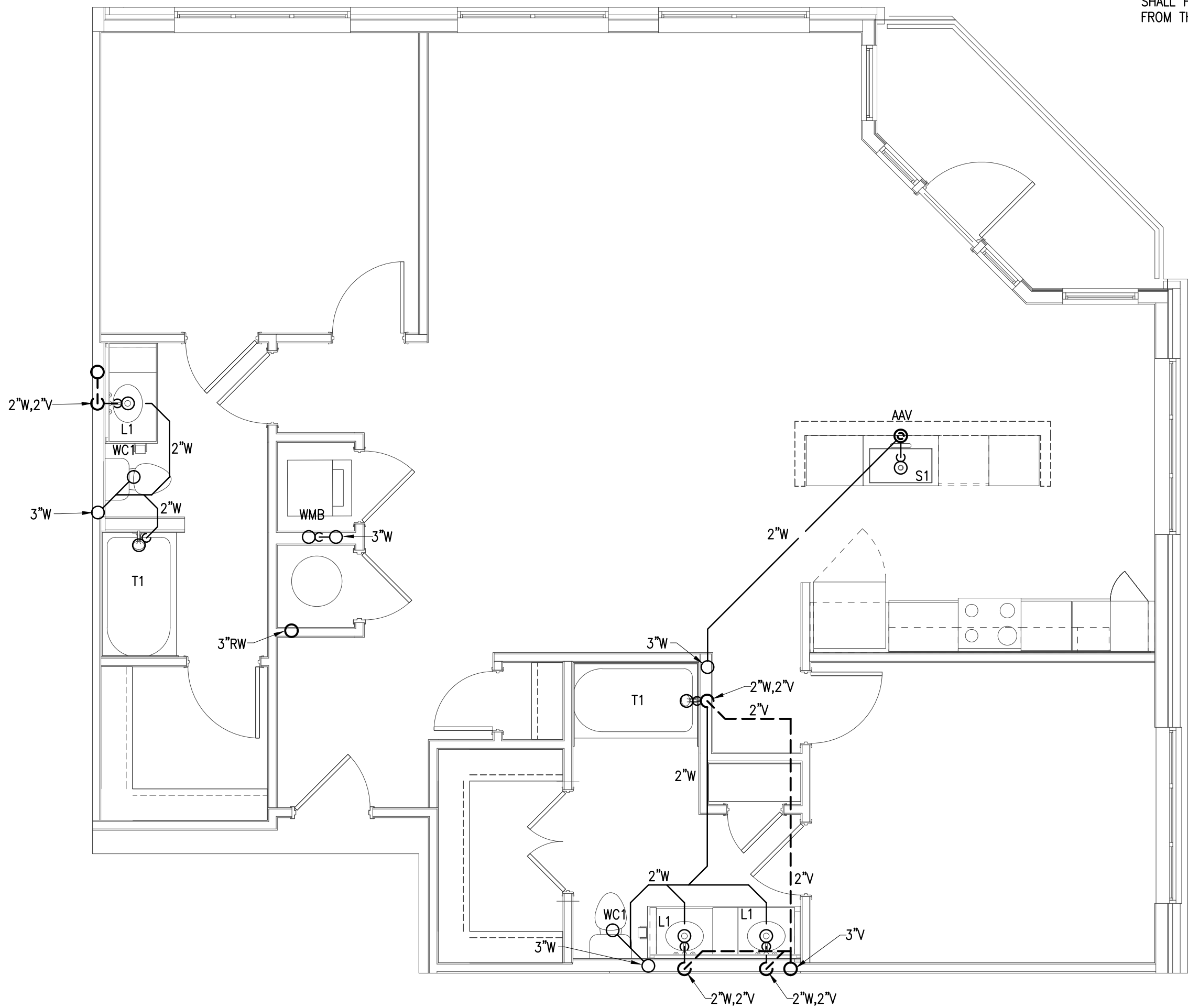
© 2017 The Preston Partnership, LL

NOTES:

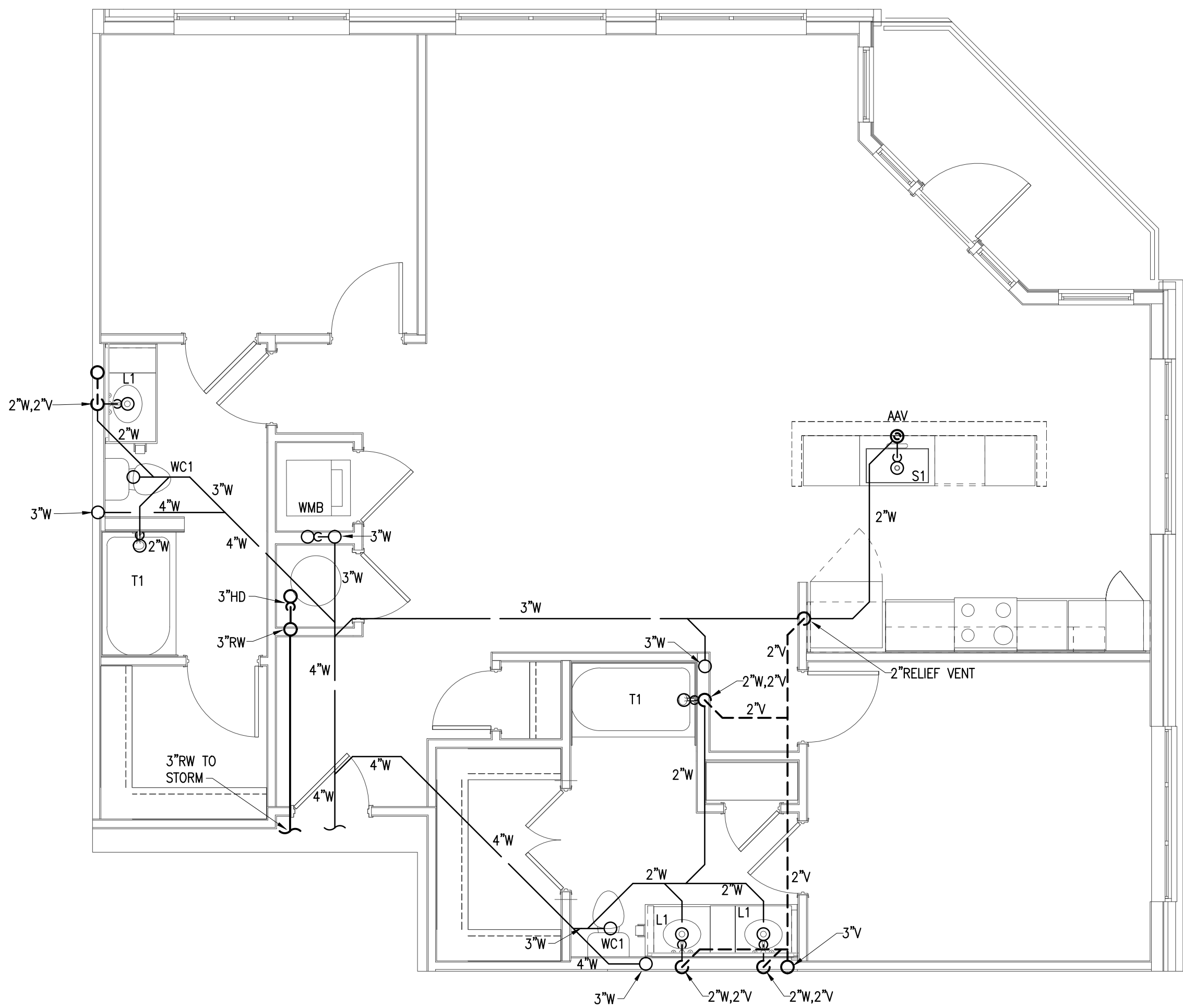
1. SEE SHEETS P0-01 P0-02 & P0-03 FOR GENERAL NOTES, SCHEDULE AND DETAILS.
2. SEE P1-XX SERIES FOR FLOOR PLANS WASTE, VENT AND WATER PIPING.
3. ISLAND SINKS WITH AIR ADMITTANCE VALVES SHALL HAVE A RELIEF VENT THREE STORIES FROM THE TOP FLOOR AND BELOW.



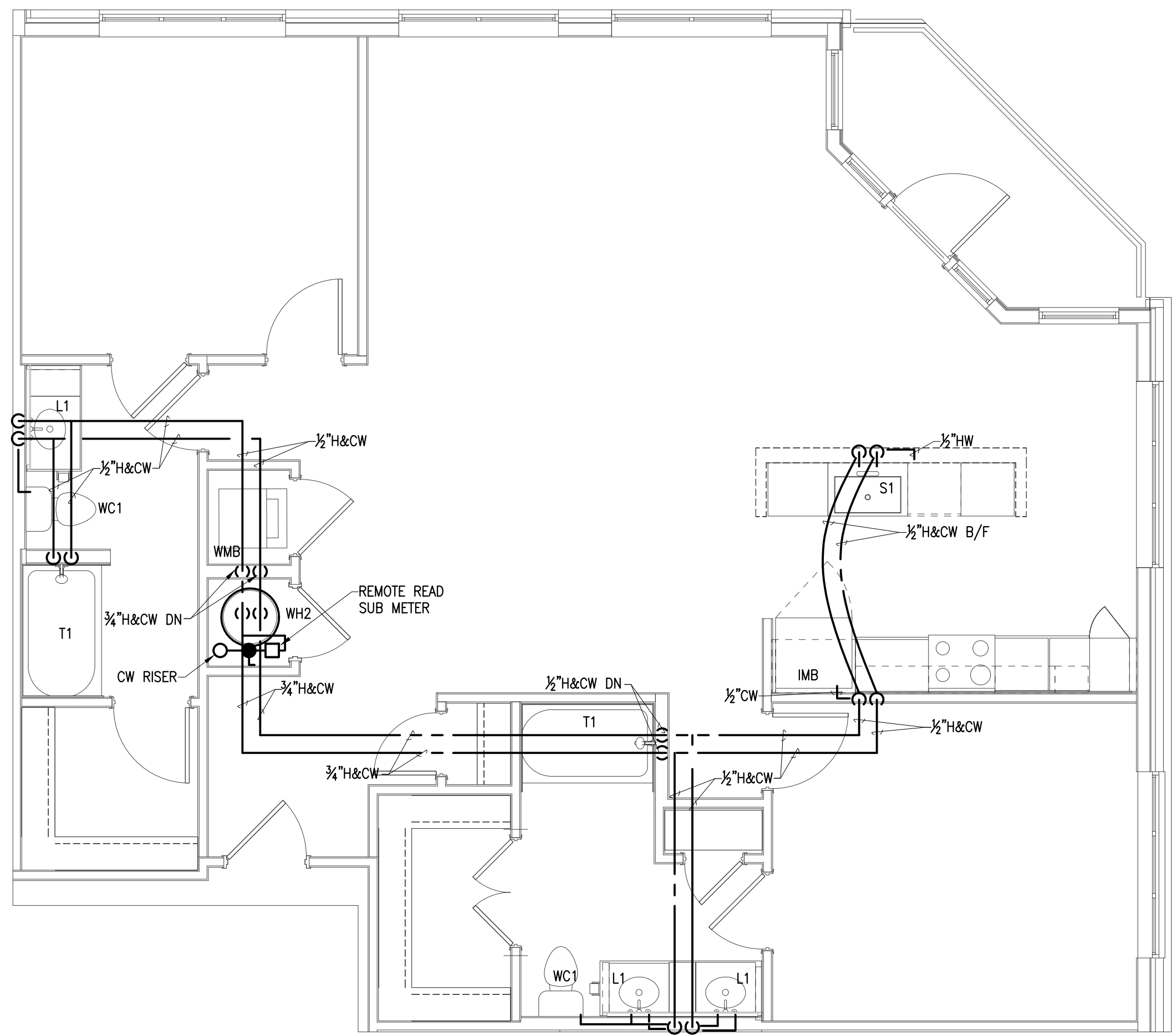
4 UNIT B5 TOP FLOOR PLAN - S,W&V
SCALE: 1/4" = 1'-0"



3 UNIT B5 TYPICAL FLOOR PLAN - S,W&V
SCALE: 1/4" = 1'-0"



2 UNIT B5 BOTTOM FLOOR PLAN - S,W&V
SCALE: 1/4" = 1'-0"



1 UNIT B5 TYPICAL WATER
SCALE: 1/4" = 1'-0"