

**THE PRESTON  
PARTNERSHIP, LLC**  
A MULTI-DISCIPLINARY DESIGN FIRM

SOUTH TERRACES  
115 PERIMETER CENTER PLACE, SUITE 950  
ATLANTA, GEORGIA 30346  
TELEPHONE: 770.396.7248  
FAX: 770.396.2945

WWW.THEPRESTONPARTNERSHIP.COM  
CONSULTANT

**PHILLIPS GRADICK  
ENGINEERING, P.C.** PCL# 2119085  
500 Super Mile Rd.  
Atlanta, Georgia 30328  
(770) 640-9001 (F)  
(770) 640-2410 (F)

This drawing, or any portion thereof, is not to be reproduced, published or used in any way without the written permission of Phillips Gradick Engineering, P.C. The drawing is copyrighted and printed under section 13 of the U.S. Copyright Act 1976. The permission includes but is not limited to design and construction packages. Unauthorized use of these plans without the express written permission of Phillips Gradick Engineering, P.C., is prohibited.

SEAL



05/03/2017

PROJECT

**REVEL AT THE  
BALLPARK  
PHASE II**  
2885 CRESCENT PKWY  
SMYRNA, GA 30080

FOR



**ATLANTIC REALTY  
PARTNERS**

3438 PEACHTREE ROAD  
SUITE 1425  
ATLANTA, GA 30326

ISSUES & REVISIONS

CONCEPTUAL DESIGN	8/21/15
SO PROGRESS SET	09/28/15
GMP PRICING SET	10/14/15
FOUNDATION PACKAGE	12/07/15
GMP PACKAGE	04/03/17
PERMIT SET	05/22/17

DATE 05/22/2017

JOB NUMBER 1493101

DRAWN BY WJMJ

CHECKED BY CDF

SHEET TITLE

UNIT PLANS -  
PLUMBING

SHEET NUMBER

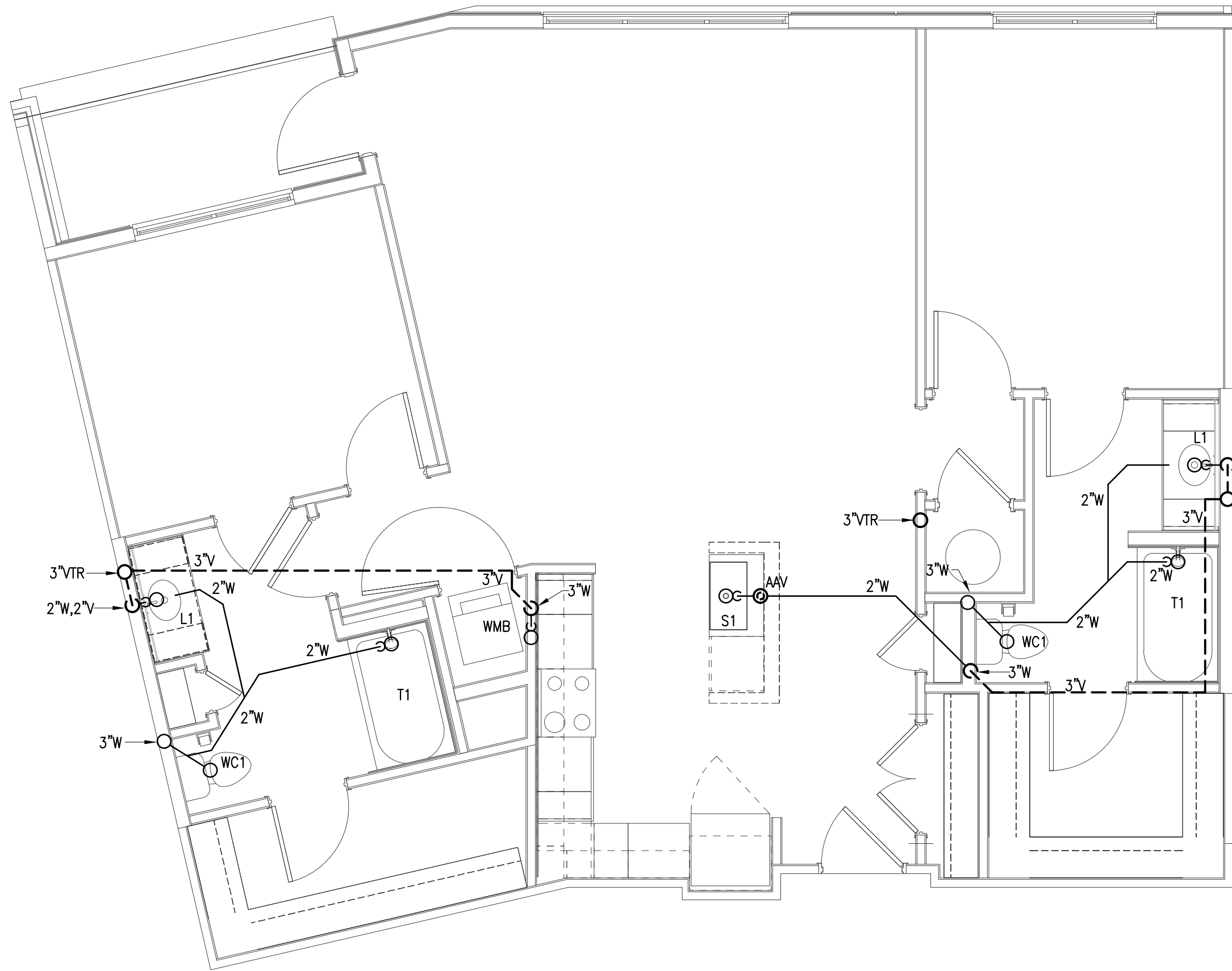
**P3-16**

COMMENTS

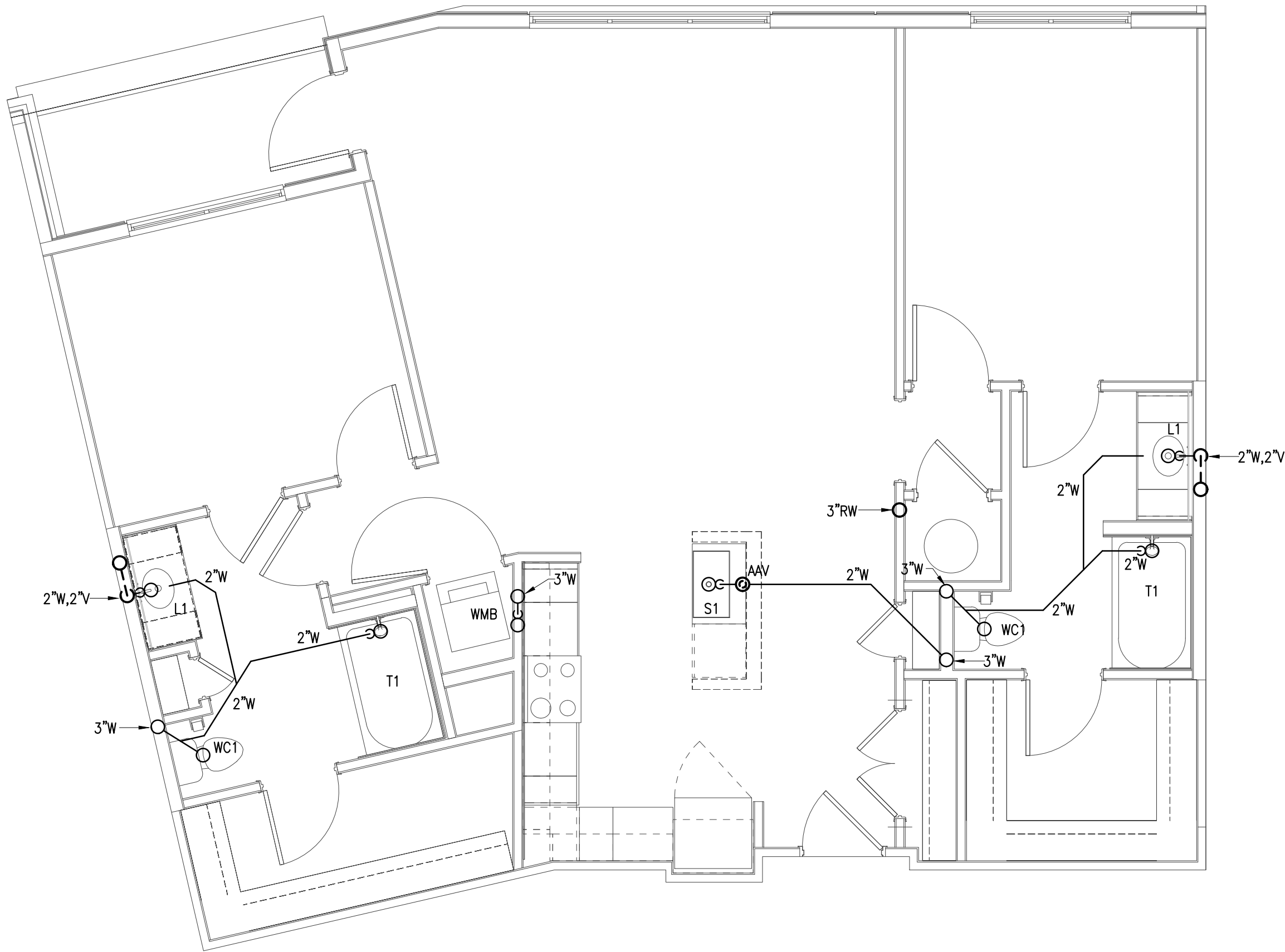
30X42 © 2017 The Preston Partnership, LLC

NOTES:

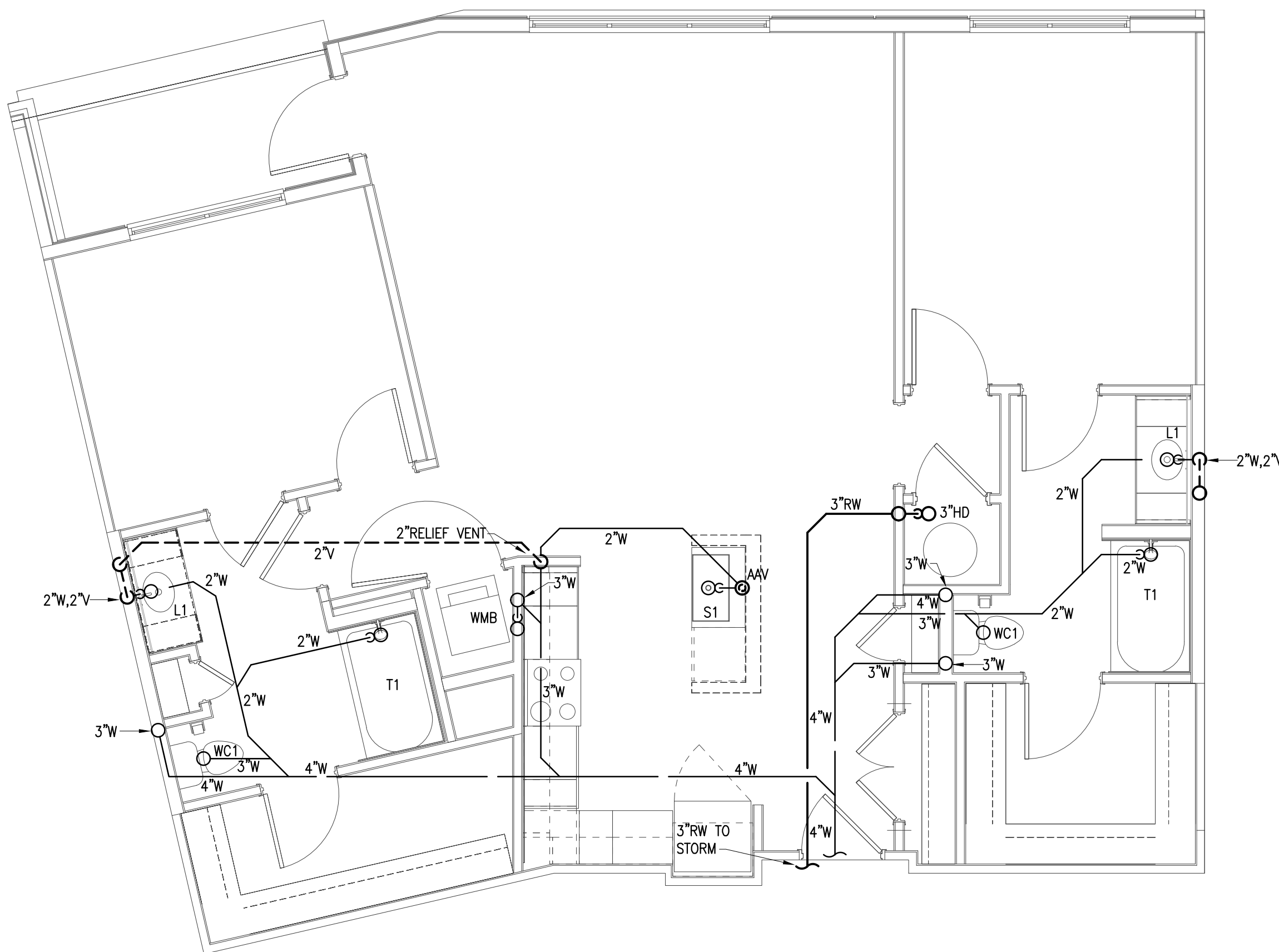
1. SEE SHEETS P0-01 P0-02 & P0-03 FOR GENERAL NOTES, SCHEDULE AND DETAILS.
2. SEE P1-XX SERIES FOR FLOOR PLANS WASTE, VENT AND WATER PIPING.
3. ISLAND SINKS WITH AIR ADMITTANCE VALVES SHALL HAVE A RELIEF VENT THREE STORIES FROM THE TOP FLOOR AND BELOW.



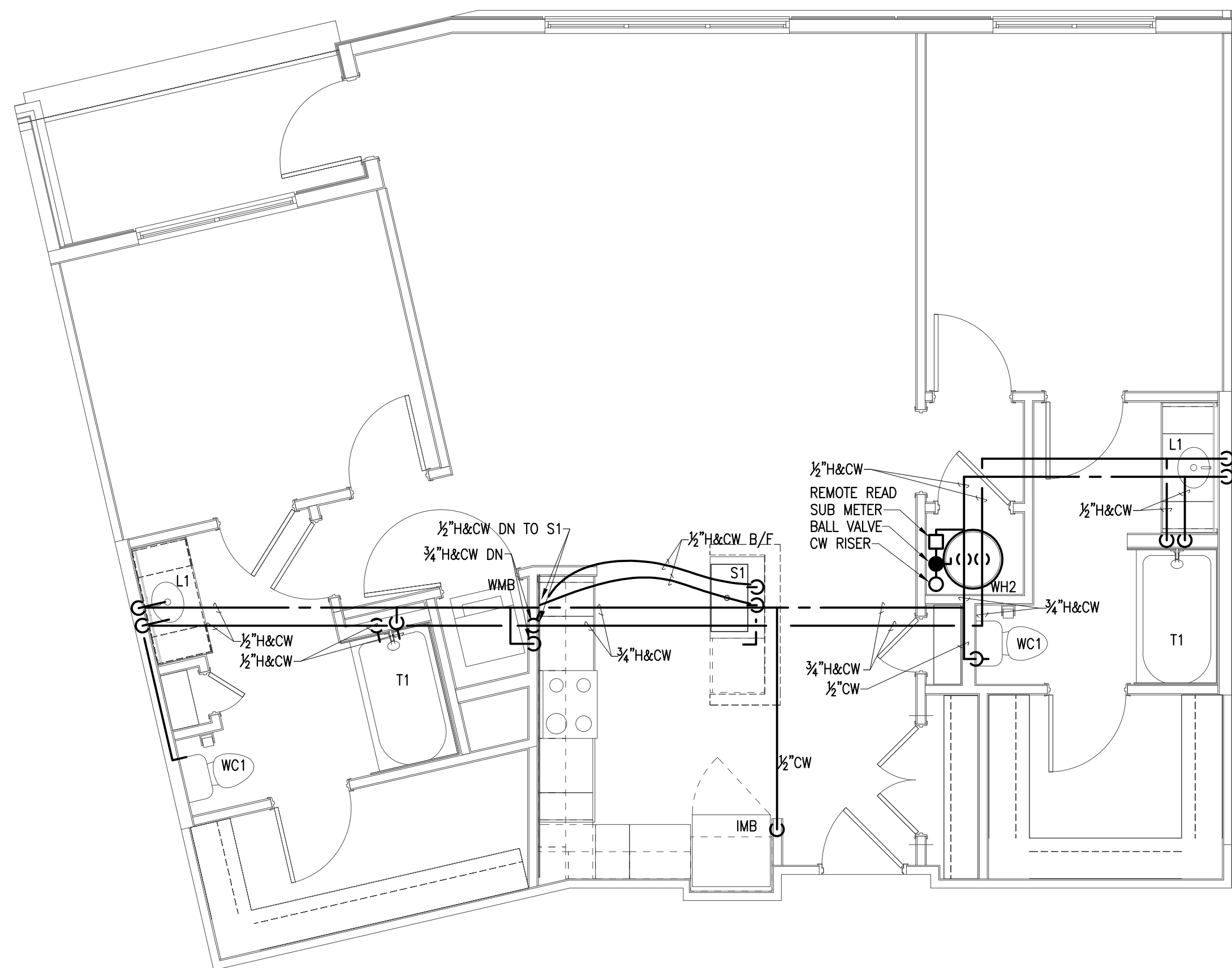
4 UNIT B7 TOP FLOOR PLAN - S,W&V  
SCALE: 1/4" = 1'-0"



3 UNIT B7 TYPICAL FLOOR PLAN - S,W&V  
SCALE: 1/4" = 1'-0"



2 UNIT B7 BOTTOM FLOOR PLAN - S,W&V  
SCALE: 1/4" = 1'-0"



1 UNIT B7 TYPICAL WATER  
SCALE: 1/4" = 1'-0"