

**THE PRESTON
PARTNERSHIP, LLC**
A MULTI-DISCIPLINARY DESIGN FIRM

SOUTH TERRACES
115 PERIMETER CENTER PLACE, SUITE 950
ATLANTA, GEORGIA 30346
TELEPHONE: 770.396.7248
FAX: 770.396.2945

WWW.THEPRESTONPARTNERSHIP.COM
CONSULTANT



PHILLIPS GRADICK
ENGINEERING, P.C.
530 Super Mile Rd.
Atlanta, Georgia 30328
(770) 640-4001 (T)
(770) 640-2410 (F)

This drawing, or any portion thereof, is not to be reproduced, published or used in any way without the written permission of Phillips Gradick Engineering, P.C. The drawing is prepared and printed under license (20) of the U.S. Copyright Act (1976). The permission is not to be used for any other purpose without the express written permission of Phillips Gradick Engineering, P.C. is prohibited.

SEAL



05/03/2017

PROJECT

**REVEL AT THE
BALLPARK
PHASE II**

2885 CRESCENT PKWY
SMYRNA, GA 30080

FOR



**ATLANTIC REALTY
PARTNERS**

3438 PEACHTREE ROAD
SUITE 1425
ATLANTA, GA 30326

ISSUES & REVISIONS

NO.	DESCRIPTION	DATE
1	CONCEPTUAL DESIGN	8/21/15
2	50% PROGRESS SET	09/28/15
3	60% PROGRESS SET	10/14/15
4	FOUNDATION PACKAGE	12/07/15
5	60% PACKAGE	04/03/17
6	PERMIT SET	05/22/17

DATE 05/22/2017

JOB NUMBER 1493101

DRAWN BY WJM

CHECKED BY CDF

SHEET TITLE

UNIT PLANS -
PLUMBING

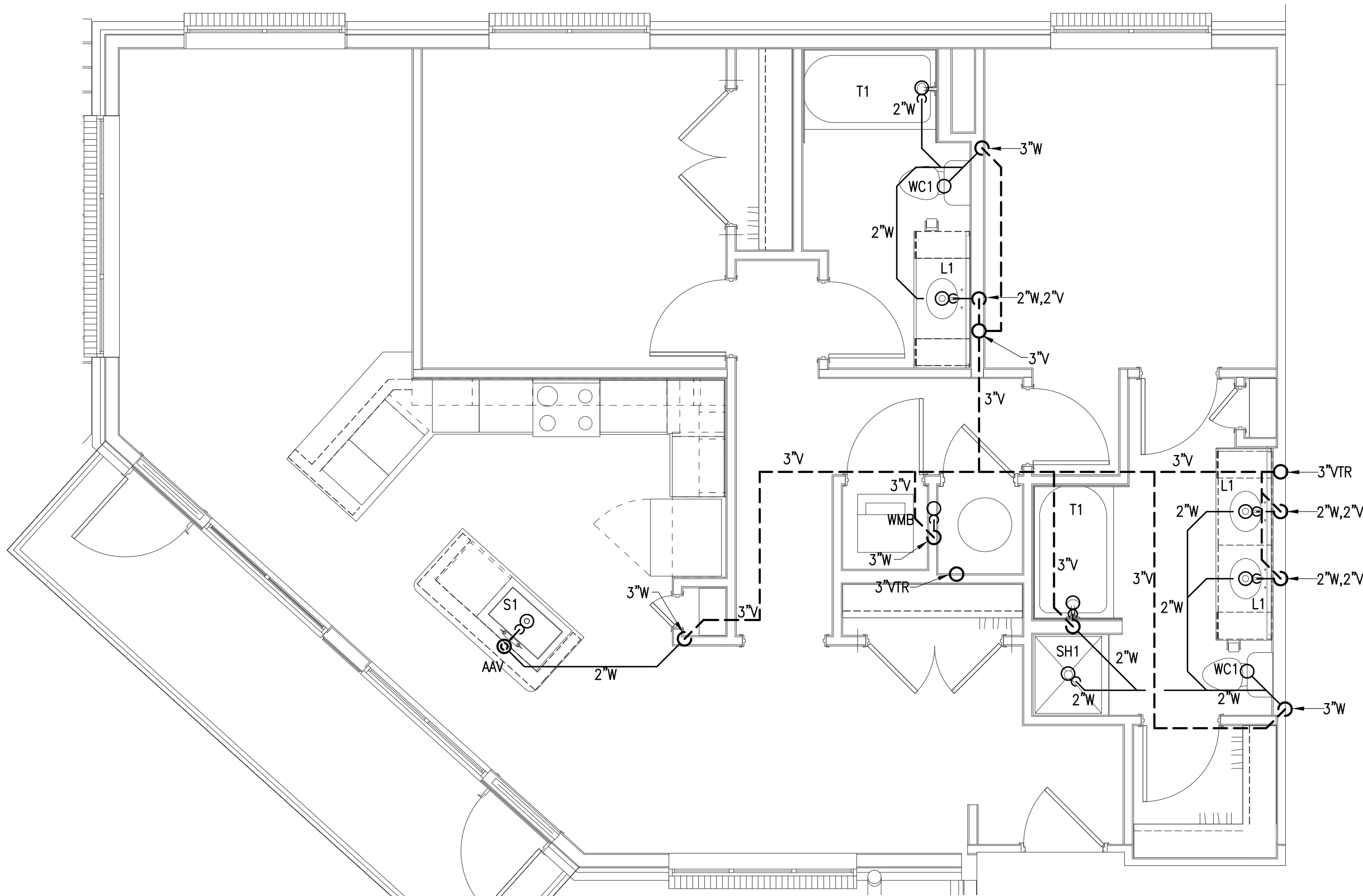
SHEET NUMBER

P3-17

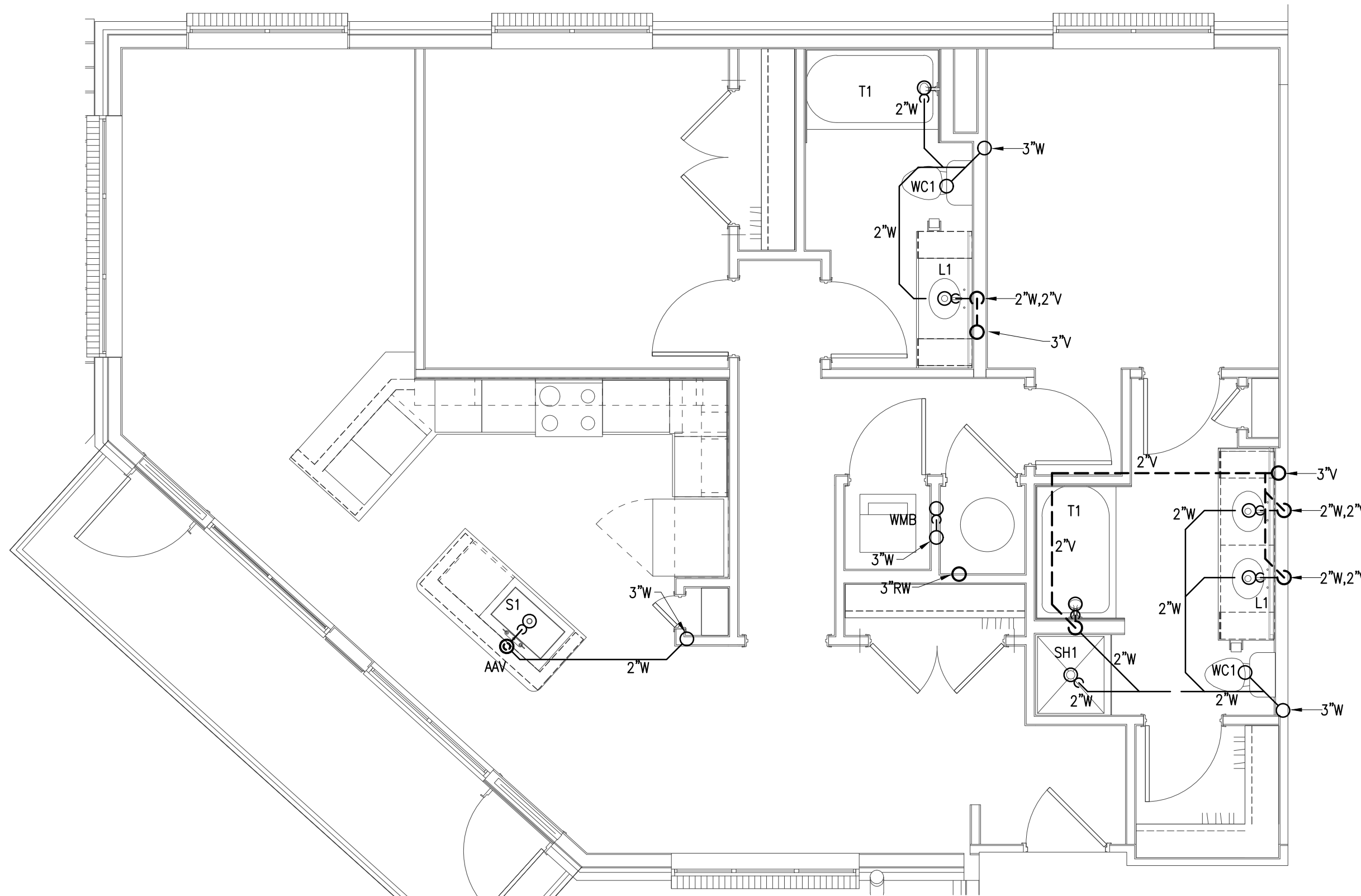
COMMENTS

30X42 © 2017 The Preston Partnership, LLC

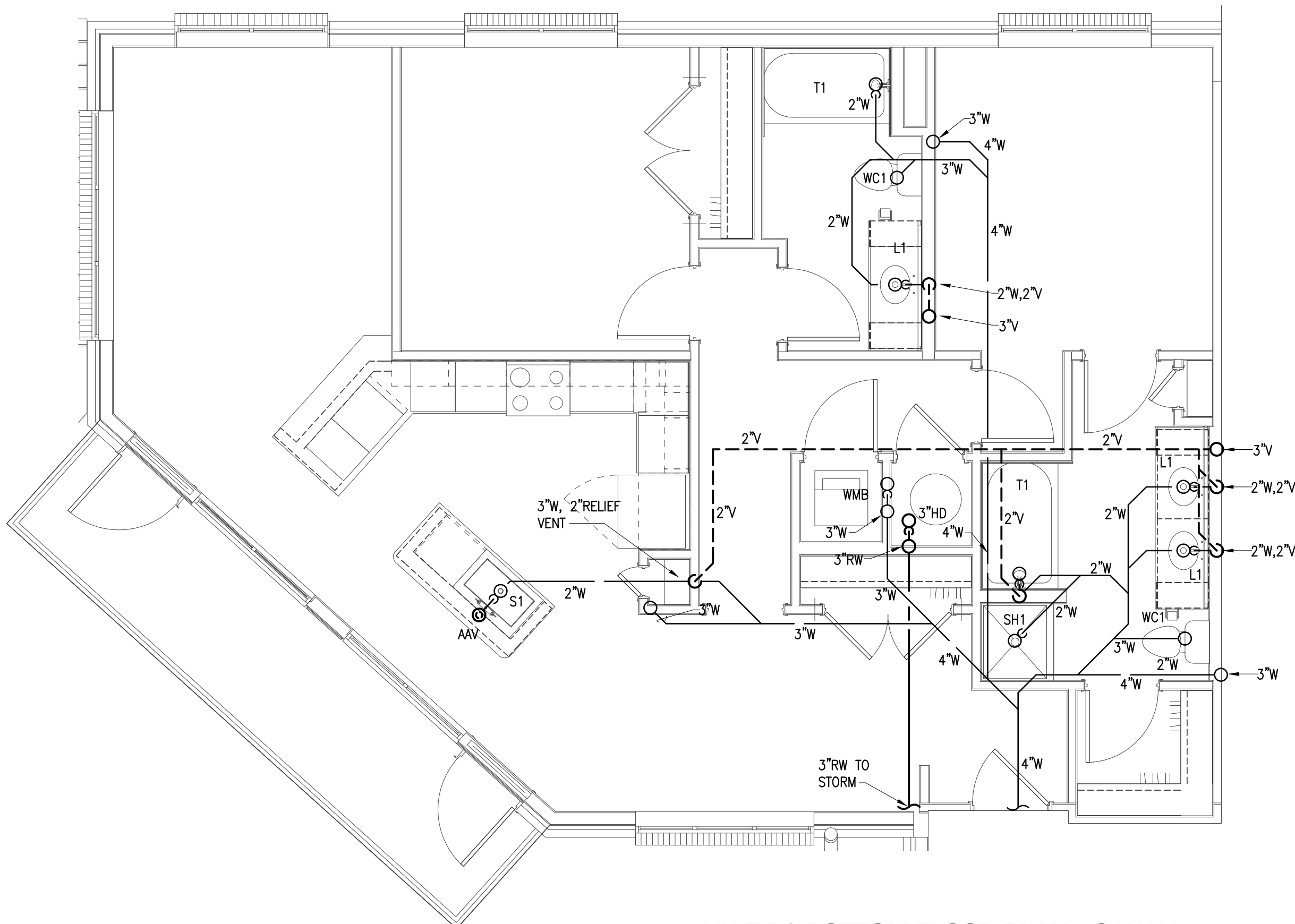
- NOTES:
- SEE SHEETS P0-01 P0-02 & P0-03 FOR GENERAL NOTES, SCHEDULE AND DETAILS.
 - SEE P1-XX SERIES FOR FLOOR PLANS WASTE, VENT AND WATER PIPING.
 - ISLAND SINKS WITH AIR ADMITTANCE VALVES SHALL HAVE A RELIEF VENT THREE STORIES FROM THE TOP FLOOR AND BELOW.



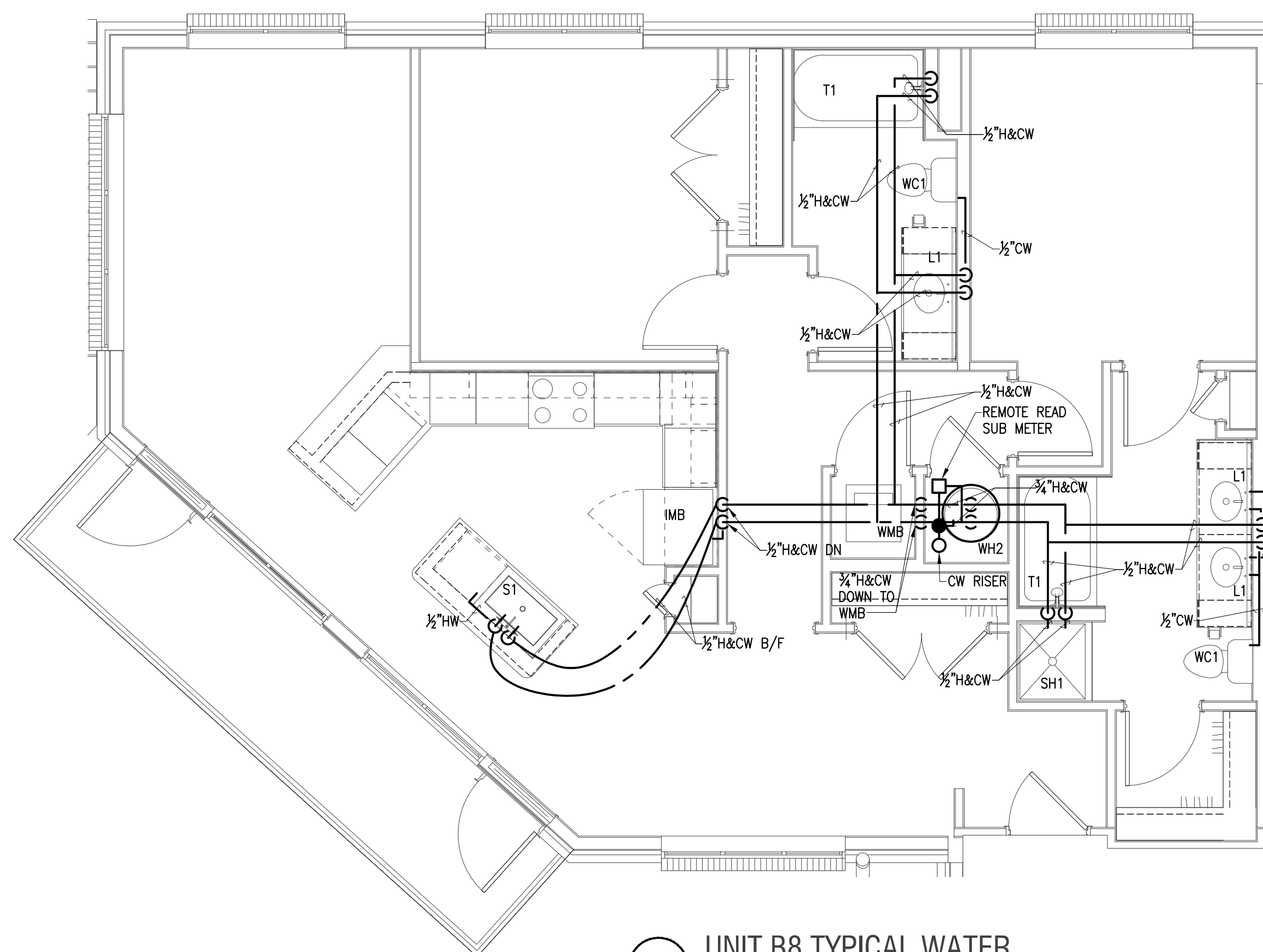
4 UNIT B8 TOP FLOOR PLAN - S.W&V
SCALE: 1/4" = 1'-0"



3 UNIT B8 TYPICAL FLOOR PLAN - S.W&V
SCALE: 1/4" = 1'-0"



2 UNIT B8 BOTTOM FLOOR PLAN - S.W&V
SCALE: 1/4" = 1'-0"



1 UNIT B8 TYPICAL WATER
SCALE: 1/4" = 1'-0"