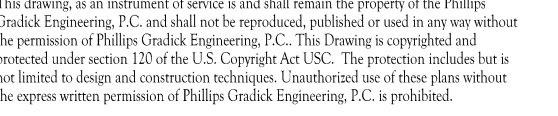
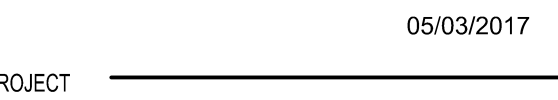




SOUTH TERRACES
5 PERIMETER CENTER PLACE, SUITE 950
ATLANTA, GEORGIA 30346
TELEPHONE: 770 396 7248
FAX: 770 396 2945

WWW.THEPRESTONPARTNERSHIP.COM
CONSULTANT





REVEL AT THE BALLPARK PHASE II

885 CRESCENT PKWY
SMYRNA, GA 30080

OR _____



438 PEACHTREE ROAD
SUITE 1425
ATLANTA, GA 30326

SUES & \triangle - REVISIONS _____ DATE _____

CONCEPTUAL DESIGN	8/21/15
SD PROGRESS SET	09/28/15
SMP PRICING SET	10/14/15
FOUNDATION PACKAGE	12/07/15
SMP PACKAGE	04/03/17
PERMIT SET	05/22/17

05/22/2017

08 NUMBER 1493101

RAWN BY _____ WJM

CHECKED BY _____ CDF

UNIT PLANS -
PLUMBING

SHEET NUMBER _____

P3-18

COMMENTS

© 2017 The Preston Partnership, LL

NOTES:

1. SEE SHEETS P0-01 P0-02 & P0-03 FOR GENERAL NOTES, SCHEDULE AND DETAILS.
2. SEE P1-XX SERIES FOR FLOOR PLANS WASTE, VENT AND WATER PIPING.
3. ISLAND SINKS WITH AIR ADMITTANCE VALVES SHALL HAVE A RELIEF VENT THREE STORIES FROM THE TOP FLOOR AND BELOW.

