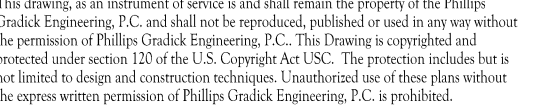




WWW.THEPRESTONPARTNERSHIP.COM
CONSULTANT



PROJECT _____

885 CRESCENT PKWY
SMYRNA, GA 30080



438 PEACHTREE ROAD
SUITE 1425
ATLANTA, GA 30326

SUES & - REVISIONS _____ DATE _____

CONCEPTUAL DESIGN	8/21/15
50% PROGRESS SET	09/28/15
100% PRICING SET	10/14/15
FOUNDATION PACKAGE	12/07/15
100% PACKAGE	04/03/17
PERMIT SET	05/22/17

DATE 05/22/2017

DB NUMBER 1493101

WJMA

CHECKED BY _____ CDF

SHEET TITLE _____

UNIT PLANS -

PLUMBING

SHEET NUMBER _____

P3-20

COMMENTS _____

© 2017 The Preston Partnership, LL

- NOTES:
1. SEE SHEETS P0-01 P0-02 & P0-03 FOR GENERAL NOTES, SCHEDULE AND DETAILS.
 2. SEE P1-XX SERIES FOR FLOOR PLANS WASTE, VENT AND WATER PIPING.
 3. ISLAND SINKS WITH AIR ADMITTANCE VALVES SHALL HAVE A RELIEF VENT THREE STORIES FROM THE TOP FLOOR AND BELOW.

