

THE PRESTON
PARTNERSHIP, LLC
A MULTI-DISCIPLINARY DESIGN FIRM

SOUTH TERRACES
115 PERIMETER CENTER PLACE, SUITE 950
ATLANTA, GEORGIA 30346
TELEPHONE: 770.396.7248
FAX: 770.396.2945

WWW.THEPRESTONPARTNERSHIP.COM
CONSULTANT



SEAL



05/03/2017

PROJECT

REVEL AT THE
BALLPARK
PHASE II
2885 CRESCENT PKWY
SMYRNA, GA 30080

FOR



ATLANTIC REALTY
PARTNERS

3438 PEACHTREE ROAD
SUITE 1425
ATLANTA, GA 30326

ISSUES & REVISIONS

NO.	DESCRIPTION	DATE
1	CONCEPTUAL DESIGN	8/21/15
2	50% PROGRESS SET	09/28/15
3	60% PROGRESS SET	10/14/15
4	FOUNDATION PACKAGE	12/07/15
5	60% PACKAGE	04/03/17
6	PERMIT SET	05/22/17

DATE 05/22/2017

JOB NUMBER 1493101

DRAWN BY WJMJ

CHECKED BY CDF

SHEET TITLE UNIT PLANS - PLUMBING

SHEET NUMBER

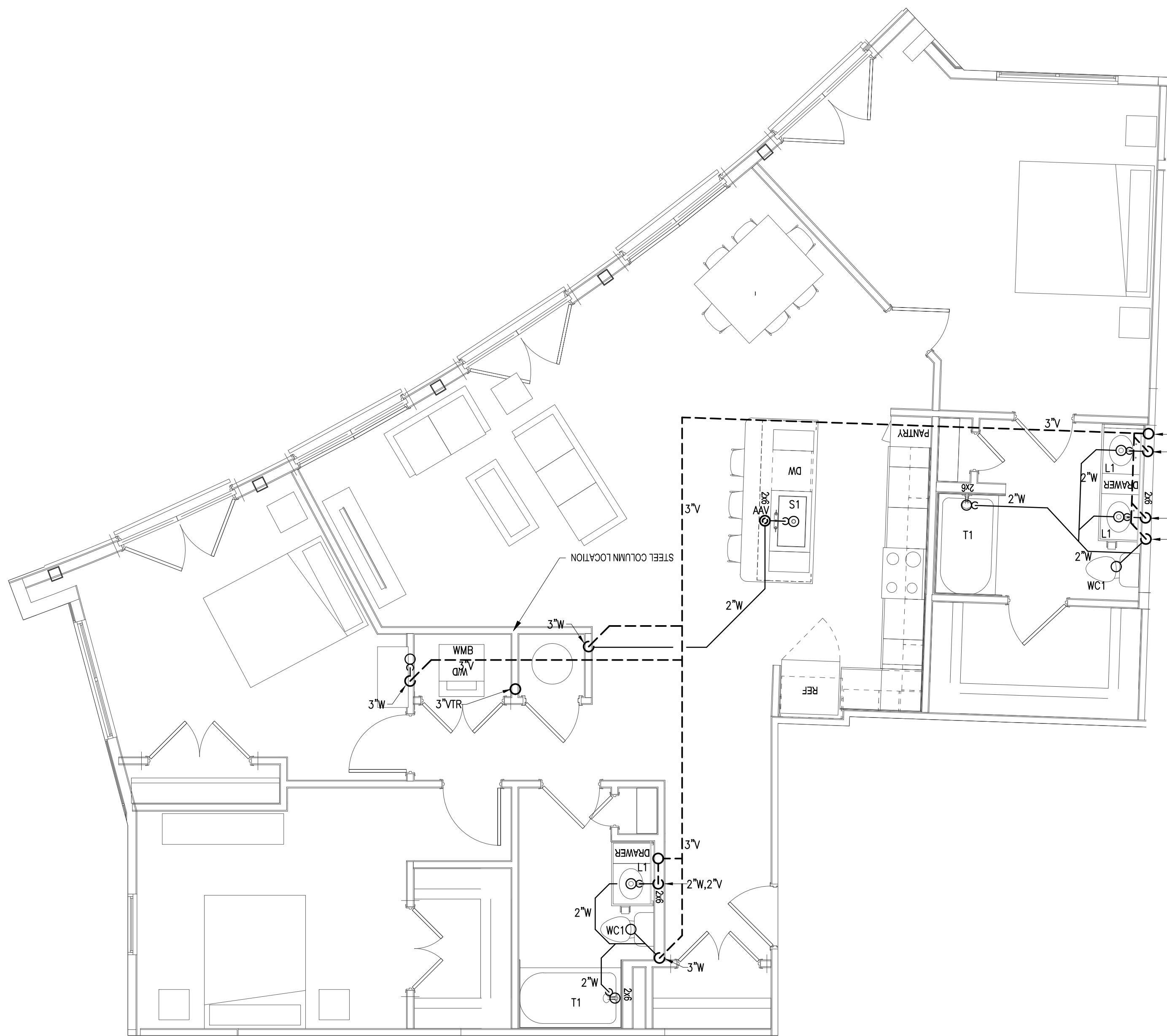
COMMENTS

P3-21

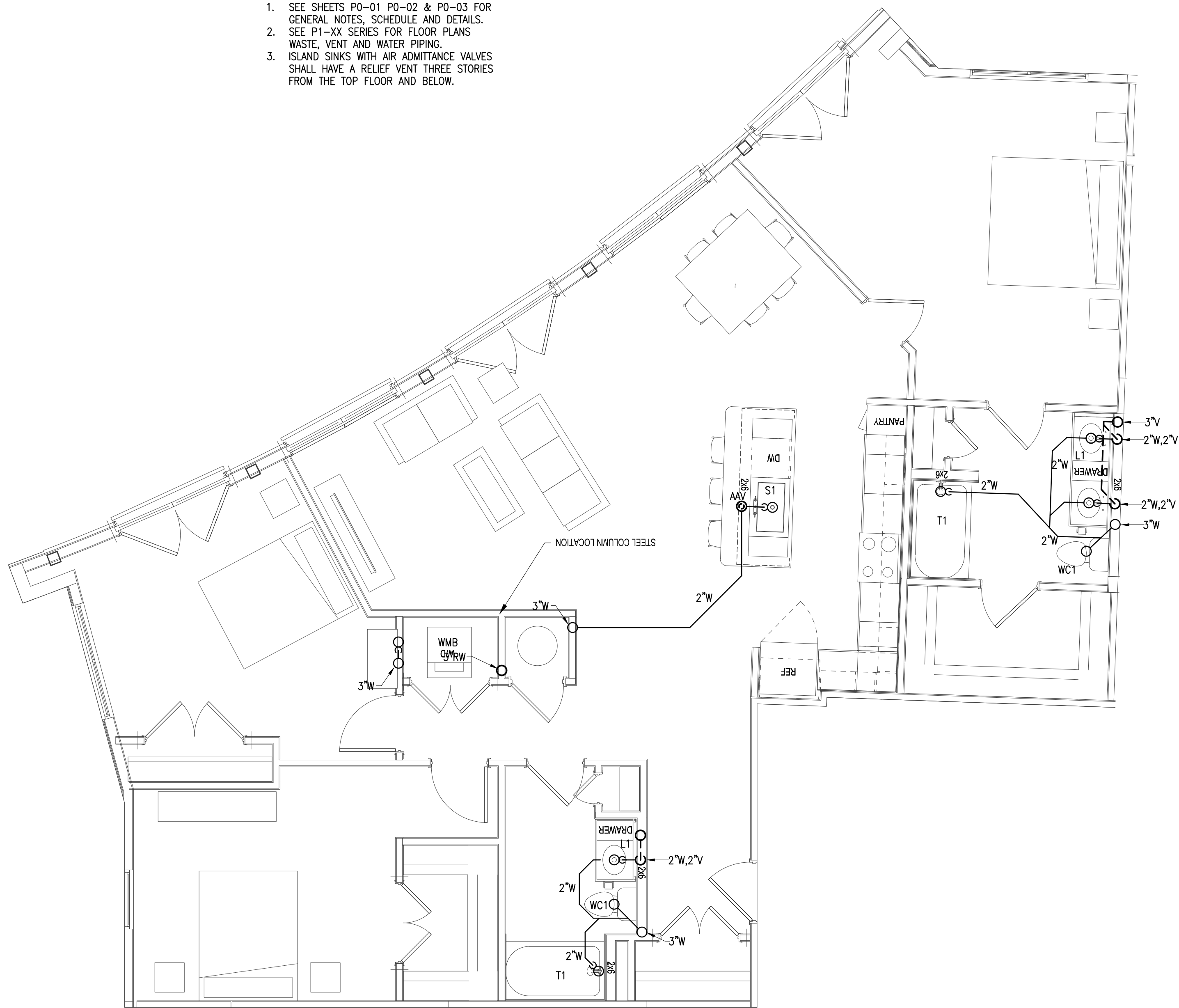
30X42 © 2017 The Preston Partnership, LLC

NOTES:

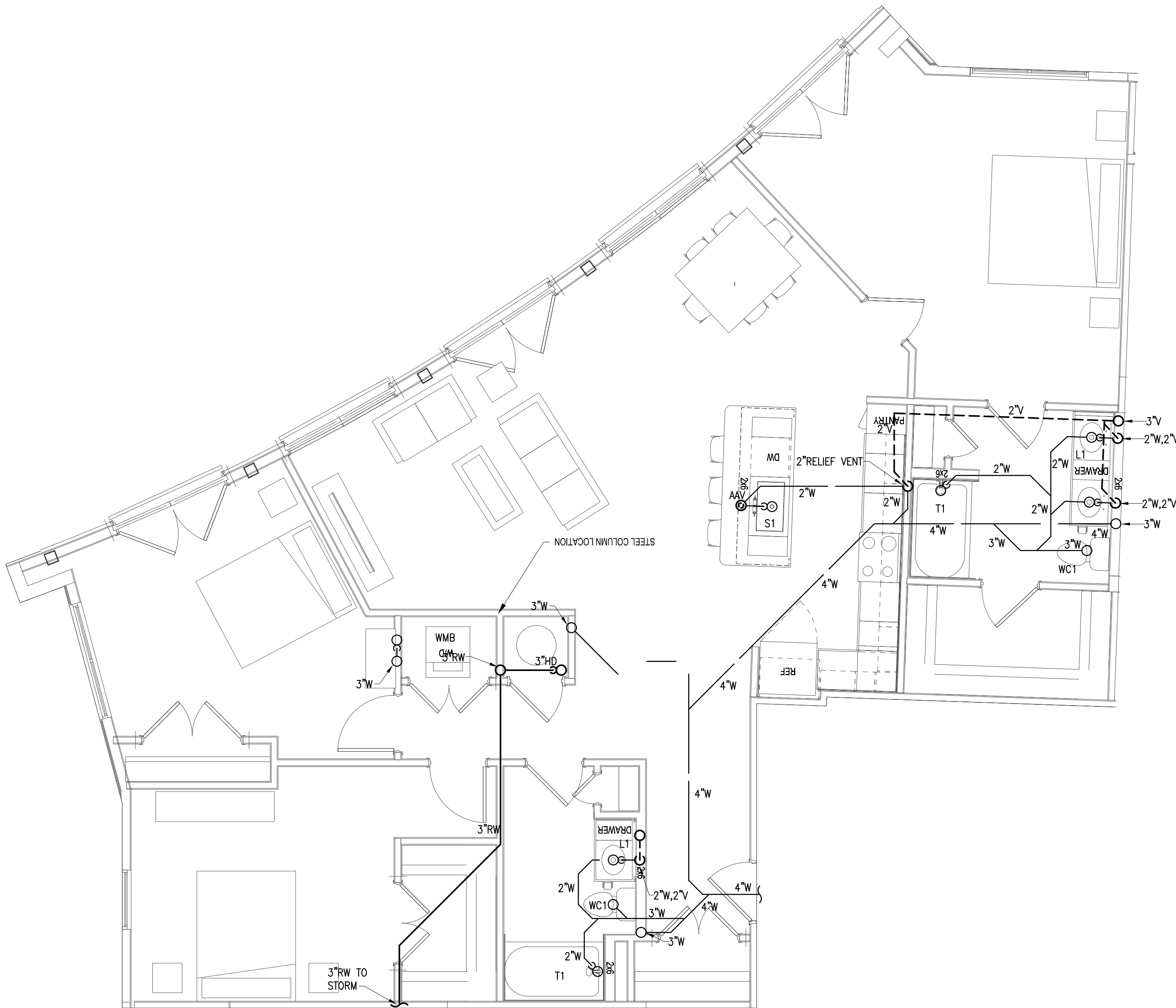
1. SEE SHEETS P0-01 P0-02 & P0-03 FOR GENERAL NOTES, SCHEDULE AND DETAILS.
2. SEE P1-VX SERIES FOR FLOOR PLANS WASTE, VENT AND WATER PIPING.
3. ISLAND SINKS WITH AIR ADMITTANCE VALVES SHALL HAVE A RELIEF VENT THREE STORES FROM THE TOP FLOOR AND BELOW.



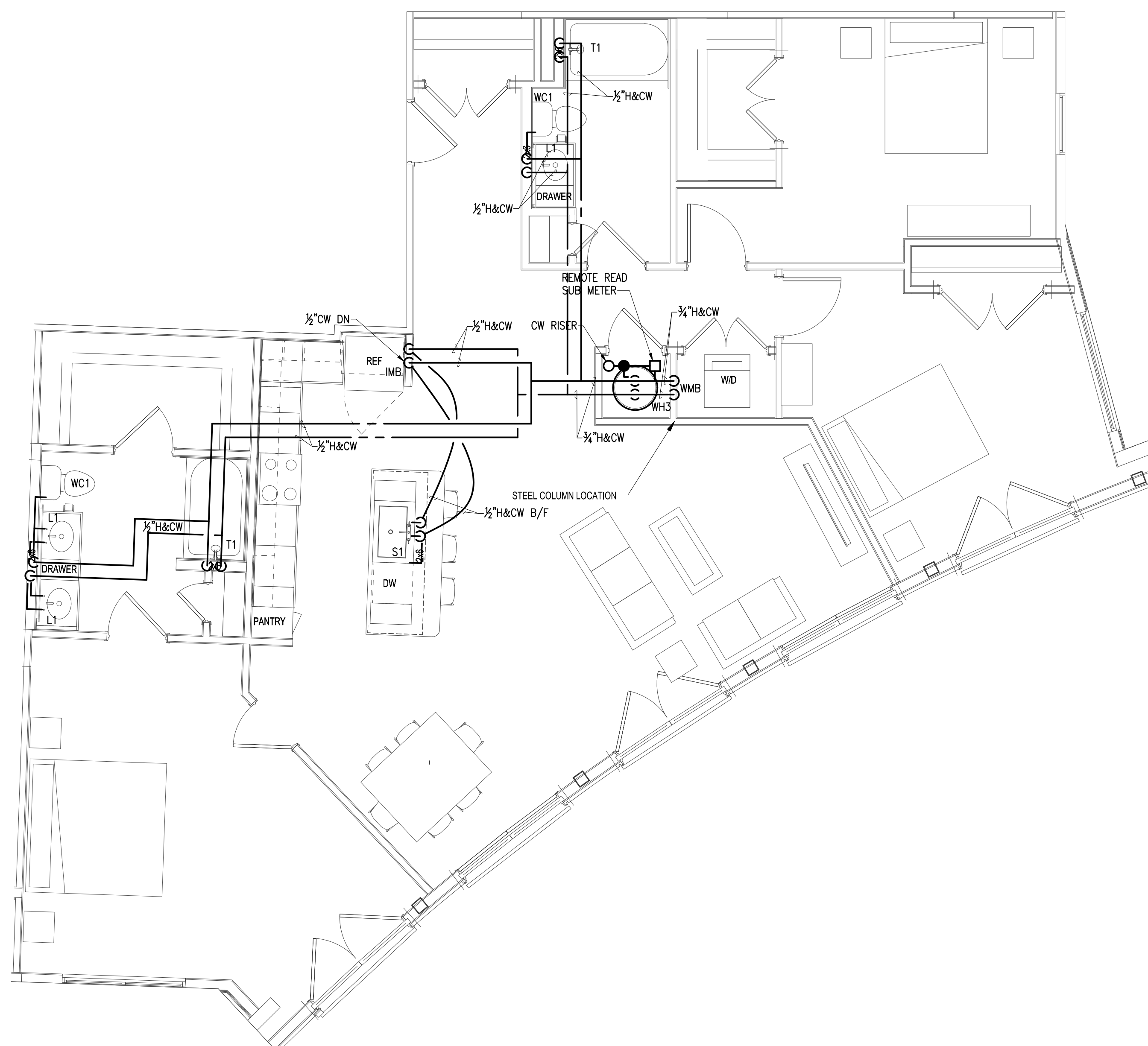
4 UNIT C3 TOP FLOOR PLAN - S, W&V
SCALE: 1/4" = 1'-0"



3 UNIT C3 TYPICAL FLOOR PLAN - S, W&V
SCALE: 1/4" = 1'-0"



2 UNIT C3 BOTTOM FLOOR PLAN - S, W&V
SCALE: 1/4" = 1'-0"



1 UNIT C3 TYPICAL WATER
SCALE: 1/4" = 1'-0"