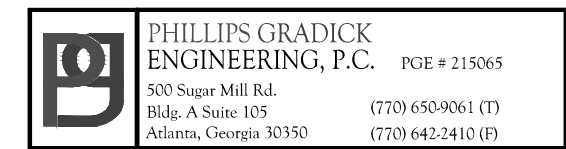


**THE PRESTON
PARTNERSHIP, LLC**
A MULTI-DISCIPLINARY DESIGN FIRM

SOUTH TERRACES
115 PERIMETER CENTER PLACE, SUITE 950
ATLANTA, GEORGIA 30346
TELEPHONE: 770 396 7248
FAX: 770 396 2945

WWW.THEPRESTONPARTNERSHIP.COM
CONSULTANT



PHILLIP GRADICK
ENGINEERING, P.C. P.E. # 215065
580 Super Mile Rd.
Bldg. A Suite 101
Atlanta, Georgia 30328 (770) 660-0001 (T)
(770) 660-3410 (F)

SEAL



05/03/2017

PROJECT

**REVEL AT THE
BALLPARK
PHASE II**
2885 CRESCENT PKWY
SMYRNA, GA 30080

FOR



**ATLANTIC REALTY
PARTNERS**

3438 PEACHTREE ROAD
SUITE 1425
ATLANTA, GA 30326

ISSUES & REVISIONS DATE

CONCEPTUAL DESIGN	8/21/15
50% PROGRESS SET	09/28/15
CMR PRICING SET	10/14/15
FOUNDATION PACKAGE	12/07/15
CMR PACKAGE	04/03/17
PERMIT SET	05/22/17

DATE 05/22/2017

JOB NUMBER 1493101

DRAWN BY WJMJ

CHECKED BY CDF

SHEET TITLE

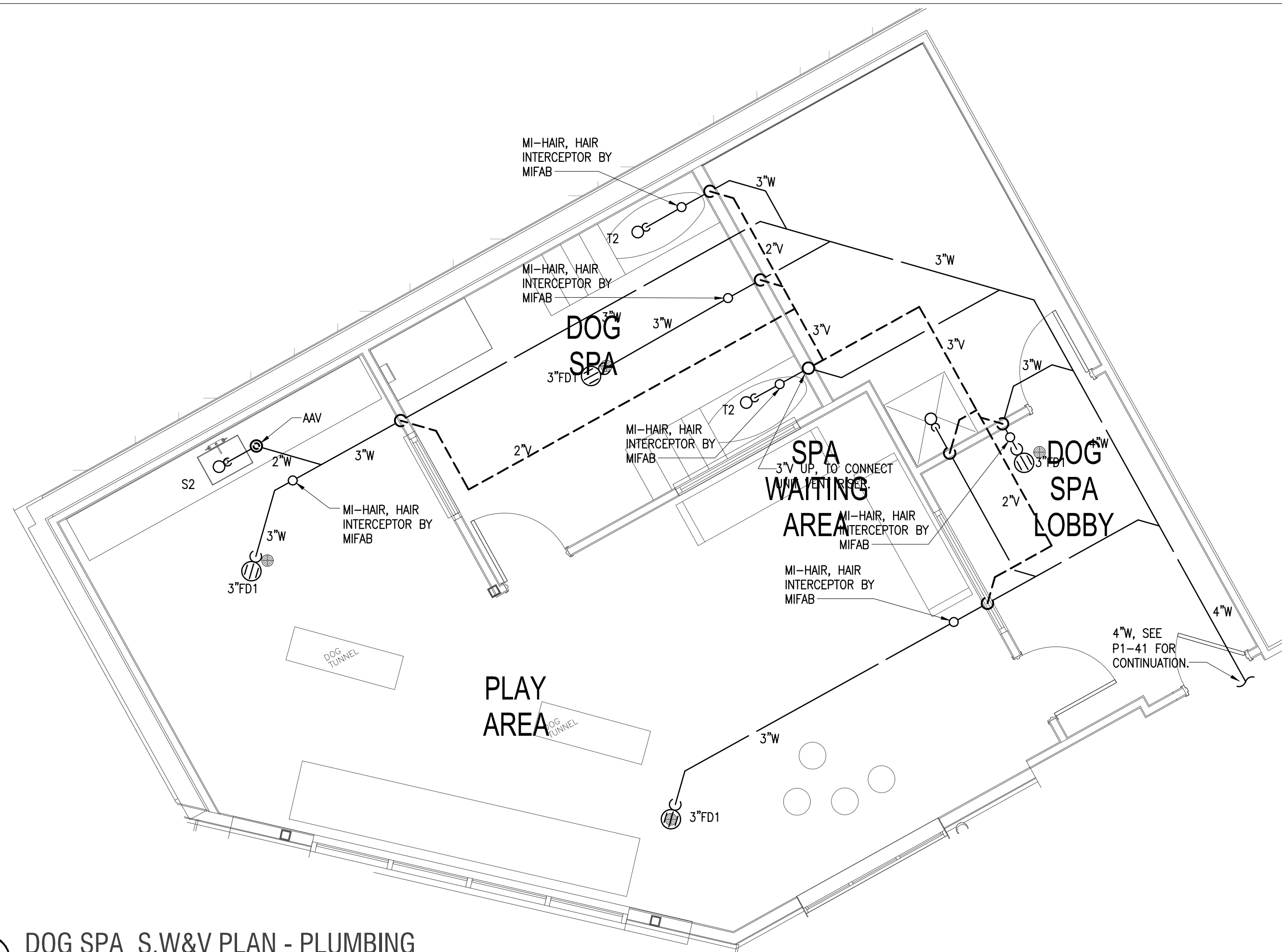
AMENITY PLANS -
DOG SPA & SKY LOUNGE

SHEET NUMBER

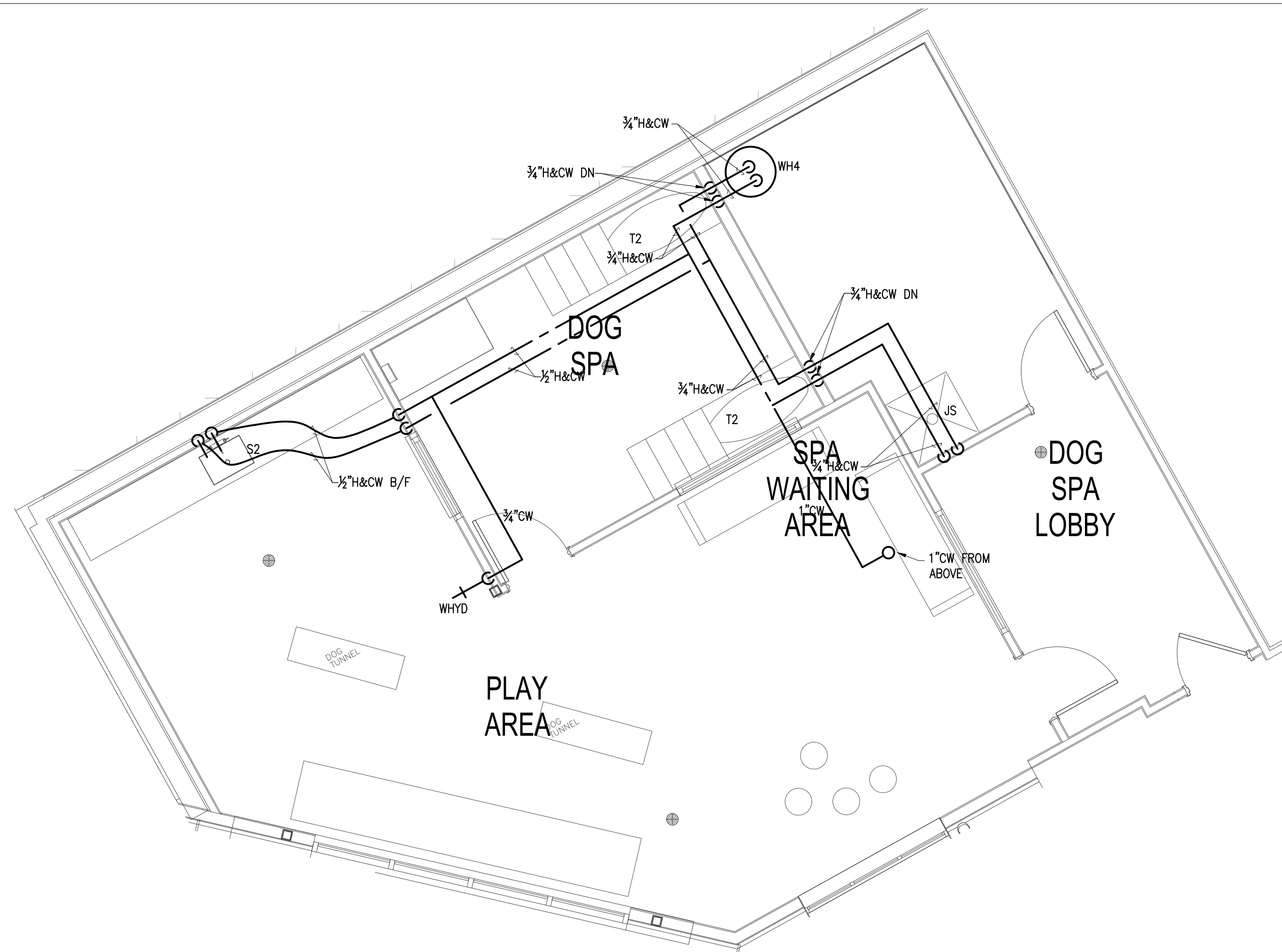
P6-02

COMMENTS

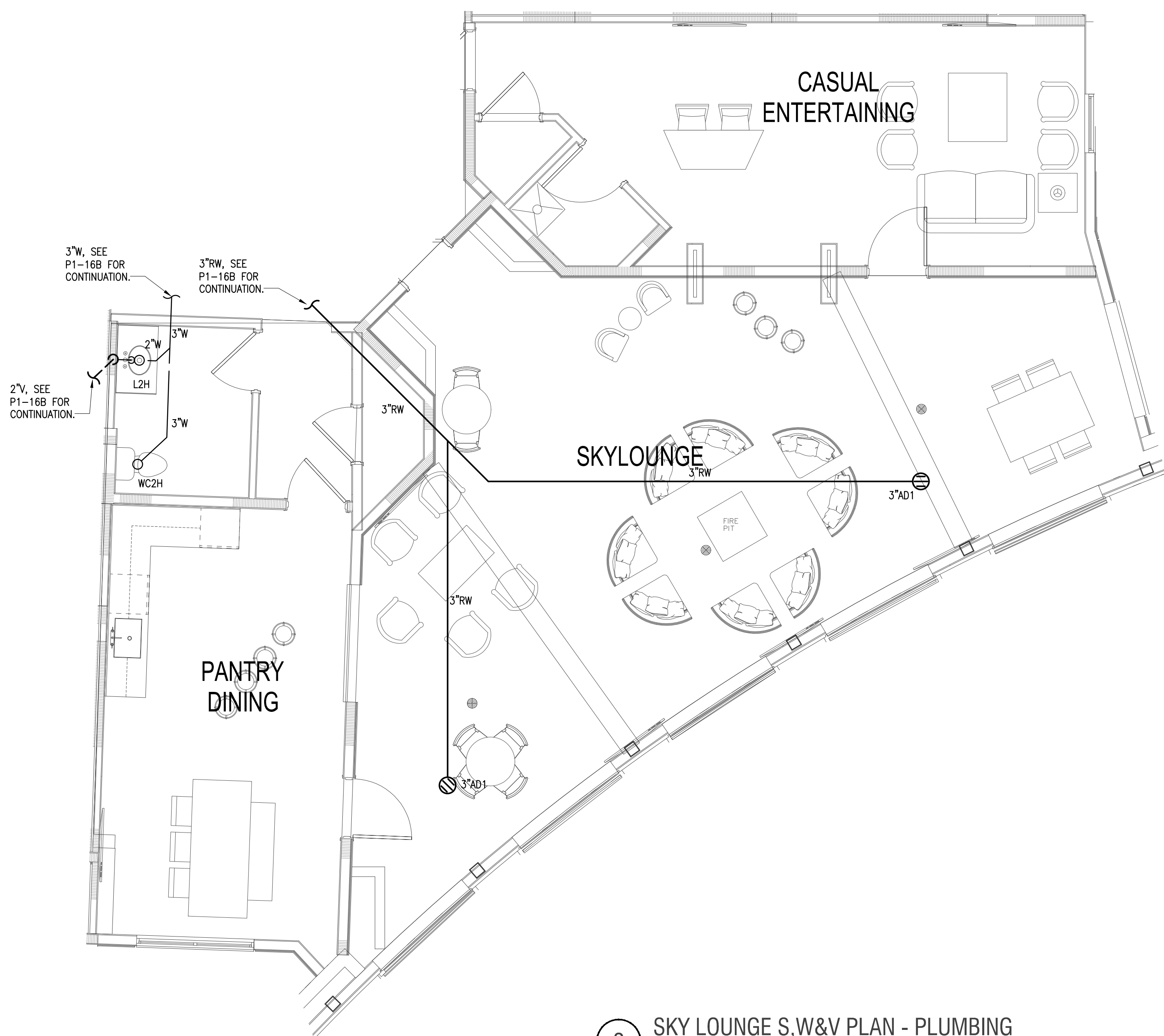
30X42 © 2017 The Preston Partnership, LLC



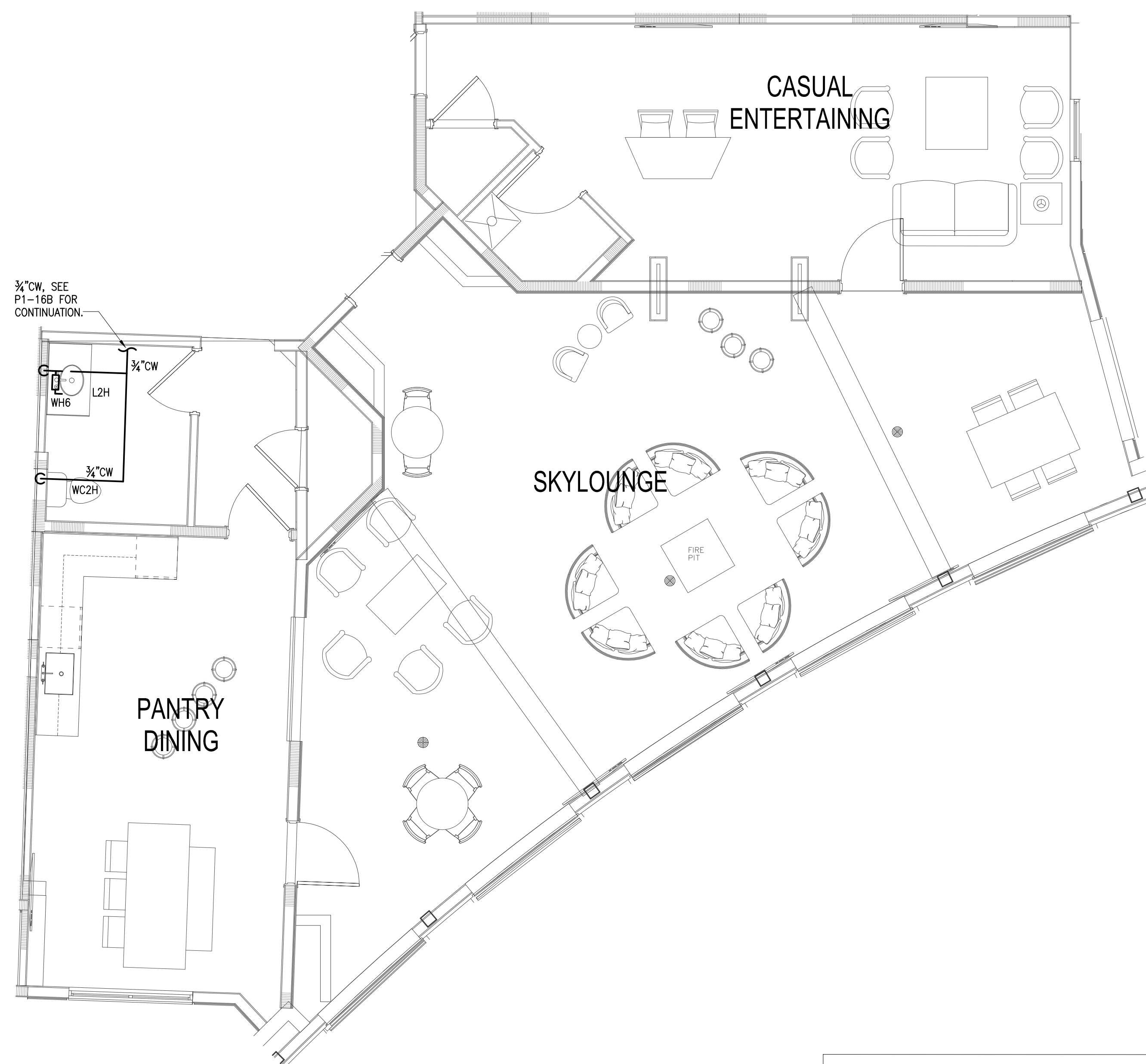
4 DOG SPA S,W&V PLAN - PLUMBING
SCALE: 1/4" = 1'-0"



3 DOG SPA WATER PLAN - PLUMBING
SCALE: 1/4" = 1'-0"



2 SKY LOUNGE S,W&V PLAN - PLUMBING
SCALE: 1/4" = 1'-0"



1 SKY LOUNGE WATER PLAN - PLUMBING
SCALE: 1/4" = 1'-0"

